



Since January 2020 Elsevier has created a COVID-19 resource centre with free information in English and Mandarin on the novel coronavirus COVID-19. The COVID-19 resource centre is hosted on Elsevier Connect, the company's public news and information website.

Elsevier hereby grants permission to make all its COVID-19-related research that is available on the COVID-19 resource centre - including this research content - immediately available in PubMed Central and other publicly funded repositories, such as the WHO COVID database with rights for unrestricted research re-use and analyses in any form or by any means with acknowledgement of the original source. These permissions are granted for free by Elsevier for as long as the COVID-19 resource centre remains active.

Contents lists available at [ScienceDirect](https://www.sciencedirect.com)

## Journal of Affective Disorders

journal homepage: [www.elsevier.com/locate/jad](http://www.elsevier.com/locate/jad)

# Association between depressive symptoms in the postpartum period and COVID-19: A meta-analysis

Chenxinzi Lin<sup>b,1</sup>, Bin Chen<sup>c,1</sup>, Youjing Yang<sup>a</sup>, Qianmin Li<sup>b</sup>, Qiuguo Wang<sup>b</sup>, Minmin Wang<sup>b</sup>, Shiying Guo<sup>b</sup>, Shasha Tao<sup>a,b,\*</sup>

<sup>a</sup> Chongqing University Central Hospital & Chongqing Emergency Medical Center, No. 1 Jiankang Road, Yuzhong District, Chongqing 400014, China

<sup>b</sup> Medical College of Soochow University, 199 Ren'ai Road, Suzhou 215123, China

<sup>c</sup> Suzhou New District Center for Disease Control and Prevention, Suzhou 215123, China

## ARTICLE INFO

## Keywords:

Anxiety  
COVID-19  
Depression  
Pregnancy  
Postpartum  
Postpartum depression  
Risk factors

## ABSTRACT

**Background:** With the pandemic of COVID, the public are faced with tremendous threatens both physically and mentally. Postpartum depression (PPD) is one of the most serious complications of childbearing, bringing severe impact on a woman's mental state and mood after birth. Research has shown that maternal mental state is closely correlated with PPD, those undergo the emergency or significant life changes during the postpartum period are more likely to suffer from PPD. In this study, we conducted the meta-analysis to estimate the association between PPD and COVID-19 pandemic.

**Methods:** PubMed, Web of Science, PsycINFO, ScienceDirect, CNKI, China Science and Technology Journal Database, and WANFANG Database were searched for potentially relevant articles published before April 2022. Review Manager 5.2 was used to perform a meta-analysis and subgroup analysis to compute the pooled odds ratio.

**Results:** A total of 26 studies were included in this review. The overall pooled prevalence of PPD in the review was 24 % (95 % CI: 0.19–0.29), with China's at 22 % (95 % CI 0.16–0.28) and other countries at 25 % (95 % CI 0.18–0.32) during the COVID-19 pandemic. Moreover, compared to those who did not experience COVID-19, those who experienced it had an increased risk of PPD [OR:1.83(95 % CI 1.70–1.97)].

**Conclusions:** According to this analysis, there was a significantly higher prevalence and odds of PPD in those who suffered from the COVID-19 pandemic. Additionally, we also found that China had a lower prevalence of postpartum depression than other countries during the COVID-19 pandemic. Our study may provide the instruction for the care of new mother under the situation of COVID-19 prevalence.

## 1. Introduction

Postpartum depression (PPD), defined as an episode of major depressive disorder during postpartum period is one of the most common mental illnesses among women of reproductive age, with the high prevalence in different countries (O'Hara and McCabe, 2013). It was reported that family or personal history of depression, low income, poor social support, cultural beliefs, poor marital relationships, low self-esteem, unwanted pregnancy and recent stressful life events in a woman's life are the most common factors for PPD (Chen et al., 2022; Evagorou et al., 2016; Fallon et al., 2021; Myo et al., 2021). And history of

mood and anxiety problems, in particular, untreated depression and anxiety during pregnancy has been reported to be the strongest risk factor for PPD (Wisner et al., 2013). Oppositely, more social support, high-income, frequency of maternal care received from health professionals, emotional support from family members were identified to protectively improve PPD (Chen et al., 2022; Dadi et al., 2020; Myo et al., 2021). There are a number of negative consequences associated with PPD, such as poor sleep quality (beyond that connected with newborn care), alternation in dietary habits and mental vulnerabilities. Suicidal thoughts, as well as concerns about harming the baby, have also been reported (Norhayati et al., 2015; Wan Mohamed Radzi et al.,

\* Corresponding author at: Chongqing University Central Hospital & Chongqing Emergency Medical Center, No. 1 Jiankang Road, Yuzhong District, Chongqing 400014, China.

E-mail address: [taoqishu619@126.com](mailto:taoqishu619@126.com) (S. Tao).

<sup>1</sup> Chenxinzi Lin and Bin Chen equally contributed to this work.

<https://doi.org/10.1016/j.jad.2022.09.129>

Received 1 August 2022; Received in revised form 19 September 2022; Accepted 26 September 2022

Available online 1 October 2022

0165-0327/© 2022 Elsevier B.V. All rights reserved.

2021). Without any intervention, PPD has the potential to make a profound detrimental impact on mothers, children, and families. Although the particular pathophysiology of PPD is still unclear, women who are facing emergency and life changes are much more sensitive to depression during pregnant and postpartum (Pierce et al., 2020; Thapa et al., 2020).

Coronavirus disease(COVID-19) was caused by severe acute respiratory syndrome coronavirus 2 and was declared as a pandemic by the World Health Organization (WHO) on March 11, 2020. The COVID-19 pandemic has resulted in a colossal negative impact on the public due to its profound disruption. Indeed, the COVID-19 has already been proven to cause negative mental disorders such as depression, anxiety, and traumatic stress (Esterwood and Saeed, 2020; Liu et al., 2021; Zanardo et al., 2020). Therefore, we put forward the conjecture that the prevalence of PPD may increase during the COVID-19 pandemic. However, existing studies have completely contradictory points on it. Pariente (Pariente et al., 2020) believes that postpartum depression significantly decreased after the COVID-19 outbreak [OR:0.44(95 % CI 0.26–0.75)]. Nevertheless, some studies side with our hypothesis, including Sudhinaraset (Sudhinaraset et al., 2022) [OR:3.11(95 % CI 2.53–3.82)] and Eberhard-Gran (Eberhard-Gran et al., 2022) [OR:4.16 (95 % CI 3.56–4.85)]. Furthermore, both An (An et al., 2021) and Wan (Xing et al., 2021) reported that during the first wave of COVID-19 in Wuhan, China, the prevalence of postpartum depression was higher. Outside of these two opposing conclusions, Yakupova (Yakupova et al., 2021)[OR:0.93(95 % CI 0.77–1.12)] believes that there is no connection between the increasing prevalence of PPD and COVID-19.

Research targeted at the prevalence of PPD during the COVID-19 pandemic is unceasingly going on, although they may not hesitate to come to different conclusions. Therefore, a comprehensive understanding of the current risk factors of individuals with PPD during the COVID-19 pandemic and how this vulnerable population responds to disaster are essential for devising immediate intervention strategies to better alleviate patients' distress and better prepare for similar situations circumstances in the future. Indeed, no published meta-analyses integrate and evaluate the relationship between PPD and COVID-19 pandemic. The study aimed to investigate the published literature to estimate the influence of the COVID-19 pandemic on the prevalence of PPD and explore the risk factors of PPD. To a certain degree, this study presents an interim analysis that is currently of significance.

## 2. Methods

### 2.1. Search strategy and selection criteria

We conducted the meta-analysis following Preferred Reporting Items for Systematic Review and Meta-Analysis(PRISMA) guidelines. A systematic search was done in the following electronic bibliographic databases from the inception of the databases to April 2022: PubMed, Web of Science, PsycINFO, ScienceDirect, CNKI, China Science and Technology Journal Database, and WANFANG Database with the predefined key MeSH search terms: (“postpartum” OR “perinatal” OR “postnatal” OR “puerperium”), and (“depressive disorders” OR “depression” OR “PPD” OR “puerperal disorders”), and (“pandemic” OR “crisis” OR “epidemic” OR “COVID-19” OR “lockdown”). The review was registered in PROSPERO (CRD42022312683). There was no restriction on study types during the preliminary search.

Studies were included if they met the following selection criteria: (1) the studies reported the depressive disorder or depressive episode among women in their childbearing years; (2) the studies used validated diagnostic, self-reported questionnaires, or clinically structured interviews to assess the PPD; (3) the details and sufficient information of the samples could be extracted by authors; (4) the studies are published in authoritative organizations or magazines. Studies were excluded for the following reasons: (1) the studies are about PPD treatment efficacy and clinical trials involving PPD interventions; (2) data were not

available or adequate; (3) subjects in studies were ineligible.

The Edinburgh postnatal depression scale(EPDS)is an effective tools used to evaluate PPD and quantify depressive symptoms due to its good reliability and validity. Comprising just ten items, the EPDS is relatively quick to complete and can effectively screen the depression status of postnatal depression(Ali et al., 2016).

EndNote X9 program was used to import articles and remove duplicates. Two reviewers (Chenxinzi Lin and Qiuguo Wang) independently screened the titles and abstracts of these studies for relevance. Shortlisted full texts were screened against the eligibility criteria and appraised for quality before they were included in the review. A flow-chart of the literature search was presented in Fig. 1.

### 2.2. Data extraction and quality assessment

Reviewers independently extracted the following data from the eligible studies: author, year of publication, country of study, participant characteristics, sample size, the postpartum depression assessment

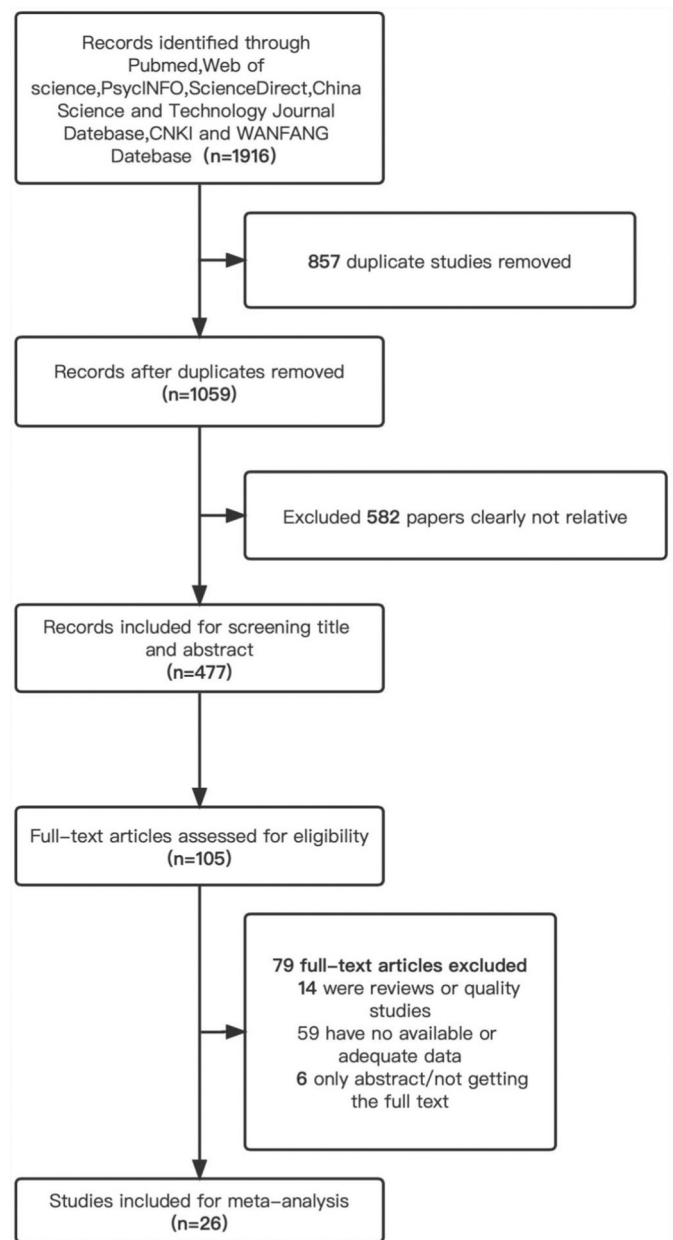


Fig. 1. Flowchart of the literature search.

criteria, cut-off points. The included studies were evaluated for the risk of bias in cross-sectional studies according to the 11 evaluation criteria recommended by **Agency for Healthcare Research and Quality (AHRQ)**, with “Yes (1 point)”, “No (0 point)”, and “unclear (0 point)” as the answers, and the Quality score was 0. On a scale of 11 points, 0 to 3 is of low quality, 4 to 7 is of medium quality, and 8 to 11 is of high quality. The scores are listed in [Table 1](#).

### 2.3. Data analysis

Depression was reported as a dichotomous variable (presence versus absence) in all studies. All analyses were performed using Review Manager 5.2. to generate a combined odds ratio (OR) and confidence interval (CI) for the risk factor. The  $I^2$  test was used to assess the heterogeneity of the studies. High heterogeneity ( $I^2 \geq 50\%$ ) random-effects model was used. Subgroup analysis was used to explore differences between pooled estimates and variables in different factors. We divided the data into smaller groups based on epidemic prevention policies (China and other countries) and COVID-19 impact (pre and post-covid-19) and then compared the data between the subgroups. The Cochran’s Q-test and  $I^2$  statistics were used to assess the heterogeneity across studies. Sensitivity analysis was conducted to evaluate the effect of the included study on the prevalence rate of PPD and the robustness of the results from the meta-analysis.

## 3. Results

### 3.1. Description of studies

In the retrieval strategy, 1916 related studies were obtained (535 records in PubMed, 223 records in Web of Science, 41 records in

PsycINFO, 986 records in ScienceDirect, 97 records in CNKI, 18 records in China Science and Technology Journal Database, and 16 records in WANFANG Database). After removal of duplicates, titles and abstracts of remaining 477 articles were screened. A total of 26 articles were included in this meta-analysis, with a cumulative cohort of 26,689 samples, including 12,026 samples before COVID-19(all data were from COVID-19 comparative studies) and 14,663 samples after COVID-19. The included researches came from China, the United States, Russia, Japan, Norway, Brazil, India, Spain, Turkey, Kenya, and other countries around the world. The features of the 26 included studies are shown in [Table 1](#).

### 3.2. Estimated pooled prevalence of PPD during the COVID-19 pandemic

The pooled prevalence of PPD was 24 % (95 % CI: 0.19–0.29), slightly higher than the prevalence of 17.22 % during the non-pandemic period, and high heterogeneity was detected across studies ( $I^2 = 98\%$ ,  $p < 0.00001$ ). [Fig. 2](#) presents the individual effective size of the studies that reported the prevalence of PPD among postpartum women during the COVID-19 period.

### 3.3. Estimated pooled prevalence of PPD in China and other countries during the COVID-19 pandemic

Studies included were divided into China and other countries, given their different policies in responding to the COVID-19 pandemic. Specifically, China has resorted to strictly implementing dynamic zero-COVID policies and lockdown policies, while other countries do not. The pooled prevalence of PPD was statistically significant ( $p < 0.00001$ ) when stratified by geographical regions, with China having a lower prevalence of 22 % (95 % CI 0.16–0.28) than other countries having a

**Table 1**  
Characteristics of included studies on postpartum depression during the COVID-19 pandemic<sup>a</sup>.

Author	Year	Country	n	N <sup>b</sup>	Source	Diagnostic Tool (cutoff)	Postpartum Time	AHRQ score
Abulaiti (Abulaiti et al., 2022)	2022	China	288	2218	Hospital	PHQ-9( $\geq 10$ )	6–8 weeks	6
An (An et al., 2021)	2020	China	70	209	Society	EPDS( $\geq 10$ )	NR	7
Boekhorst (Boekhorst et al., 2021)	2021	Netherlands	5	59	Society	EPDS( $\geq 12$ )	8–10 weeks	6
Eberhard-Gran (Eberhard-Gran et al., 2022)	2022	Norway	1164	3642	Society	EPDS-4( $\geq 6$ )	2 weeks-13 months	7
Galletta (Galletta et al., 2022)	2021	Brazil	69	178	Hospital	EPDS( $\geq 12$ )	56.85 ± 34.03 days	7
Gildner (Gildner et al., 2021)	2021	America	103	971	Society	EPDS( $\geq 13$ )	2–89 days	6
Gluska (Gluska et al., 2022)	2022	Israel	53	421	Hospital	EPDS( $\geq 13$ )	About 10 weeks	7
Hu (Hu et al., 2022)	2022	China	6	82	Society	PHQ-9( $\geq 10$ )	Within 6 weeks	8
Hui (Hui et al., 2021)	2020	China	133	954	Hospital	EPDS( $\geq 10$ )	1 day	7
Layton (Layton et al., 2021)	2021	Canada	240	298	Society	EPDS( $\geq 13$ )	Within 12 months	7
Mariño-Narvaez (Mariño-Narvaez et al., 2021)	2021	Spain	28	75	Hospital	EPDS( $\geq 10$ )	Within 1 month	9
Matsushima (Matsushima et al., 2021)	2021	Japan	160	558	Society	EPDS( $\geq 9$ )	5 months	6
Oskovi-Kaplan (Oskovi-Kaplan et al., 2021)	2020	Turkey	33	223	Hospital	EPDS( $\geq 13$ )	Within 48 h	9
Ostacoli (Ostacoli et al., 2020)	2020	Italy	72	163	Hospital	EPDS( $\geq 13$ )	Within 3 months	8
Pariante (Pariante et al., 2020)	2020	Israel	37	223	Hospital	EPDS( $\geq 10$ )	1 day	7
Peng (Peng et al., 2021)	2021	China	24	71	Society	SDS( $\geq 50$ )	Within 3 months	6
Sudhinaraset (Sudhinaraset et al., 2022)	2022	Kenya	411	1072	Society	EPDS( $\geq 10$ )	2–4 weeks and 10 weeks	8
Terada (Terada et al., 2021)	2020	Japan	35	461	Hospital	EPDS( $\geq 9$ )	1 month	8
Vatcheva (Vatcheva et al., 2021)	2021	Belgium	15	34	Hospital	EPDS( $\geq 10$ )	3–6 months	7
VidhiChaudhary (VidhiChaudhary et al., 2021)	2021	India	48	408	Hospital	EPDS( $\geq 9$ )	Over 48 h for vaginal and 4–7 days for cesarean delivery	7
Wan (Xing et al., 2021)	2020	China	79	176	Hospital	EPDS( $\geq 13$ )	10–14 days	8
Wei (Ying et al., 2021)	2021	China	14	45	Hospital	PHQ-9( $\geq 5$ )	30 days	6
Wu (Wu et al., 2022)	2022	China	22	301	Society	EPDS( $\geq 10$ )	Within 6 months	7
Yakupova (Yakupova et al., 2021)	2021	Russia	722	1645	Society	EPDS( $\geq 10$ )	Within 14 months	9
Zanardo (Zanardo et al., 2020)	2020	Italy	26	91	Hospital	EPDS( $\geq 12$ )	1 day	7
Zhang (Zhang et al., 2022)	2022	Canada	12	85	Hospital	EPDS( $\geq 13$ )	6–10 weeks	9

<sup>a</sup> AHRQ = Agency for Healthcare Research and Quality. PHQ = The Patient Health Questionnaire. EPDS = Edinburgh Postnatal Depression Scale. SDS = Self-rating Depression Scale.

<sup>b</sup> N stands for participants.

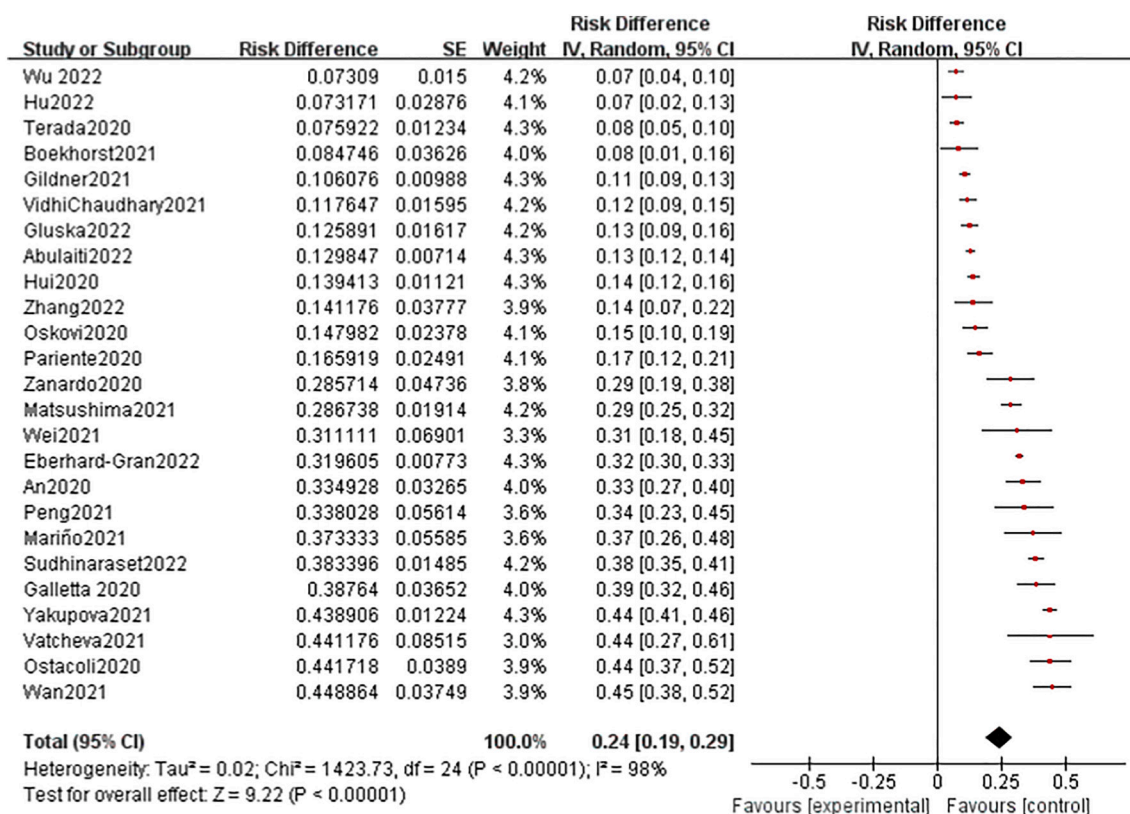


Fig. 2. Forest plot assessing the prevalence of postpartum depression during the COVID-19 pandemic.

higher prevalence of 25 % (95 % CI 0.18–0.32). The results can be seen below (Fig. 3).

3.4. Estimated pooled OR for PPD at different periods (during vs. before COVID-19)

Thirteen studies from the 26 studies, covering both pre-COVID-19 and post-COVID-19, provided data for a subgroup meta-analysis. Analyses conducted by different periods indicated significantly higher odds of PPD in the group who suffered from COVID-19 than those who did not [OR:1.83(95 % CI 1.70–1.97)]. In the subgroup of different periods, two studies showed a negative correlation between the pandemic and postpartum depression, ten studies showed a positive correlation, and one study showed no significant impact on postpartum depression. The results are presented in a forest plot below (Fig. 4).

4. Discussion

The mental health has always been a considerable issue especially in the vulnerable group. Recently, a paper published in The Lancet called for the provision of high-quality data on the mental health of the population and vulnerable groups across the world, to assess the impact of the COVID-19 pandemic (Pierce et al., 2020). Indeed, our analysis firstly revealed the prevalence of PPD during the COVID-19 pandemic.

This timely rapid meta-analysis indicated a significant increase in postpartum depression prevalence during the COVID-19 pandemic compared to previous years, 17.22 % during the non-pandemic period. In the early stage of the COVID-19, this may be primarily due to the fear of the Covid-19 virus, hospital restrictions, and lack of effective prevention and control measures. With the development of the pandemic, the impact of the pandemic on the global economy gradually emerged, many families have lost their means of support, high domestic unemployment rate and low personal income which would increase depression rate to families, indirectly contributing to postpartum depression.

As part of a relatively rapid response to the outbreak of COVID-19 in China, strict quarantine measures and lockdown policy were put in place by the government in an effort to slow down the transmission of COVID-19 (Jinru et al., 2020). These policies lead to separation from family and friends, reduce access to face-to-face physical and mental health care, and limit the ability to participate in meaningful activities. Therefore, symptoms associated with postpartum anxiety and depression may be exacerbated due to the pandemic. However, studies indicated that policy of blocking and quarantining is not a necessary factor for the increased probability of postpartum depression. Yuju Wu’s survey under the quarantine and lockdown policy in rural areas of western China found that home quarantine of puerperal, playing a positive role in maternal mental health (15.83 % pre-COVID-19 versus 7.30 % post-COVID-19) (Wu et al., 2022). This result is completely opposite to the risk factors of postpartum depression reported in other studies (Doyle and Klein, 2020; Lebel et al., 2020). Similarly, it is consistent with our analysis that we found the prevalence of postpartum depression in China is lower than in other countries. This may contribute to the positive attitude of the state to deal with the epidemic. China’s dynamic zero-COVID policies and high vaccination rates have ensured extremely low morbidity, mortality, and hospitalization rates and smoothed social and economic operation (Wang et al., 2020), the spread of the COVID-19 pandemic has been well controlled, people’s fear of the epidemic has been slowly calmed, and the risk factor of postpartum depression during the COVID-19 pandemic has also been weakened. On the other hand, China has always tried its best to ensure the health of its people, medical institutions remained open to women with high-risk pregnancies, maintained normal obstetric examinations, and even received more medical support during the COVID-19 pandemic. Reliable medical support also gave all pregnant women strong mental support to some extent.

Besides, in contrast to the “self-reliant families” and small family structure in European countries (Qinghong, 2001), traditional Chinese families emphasize the importance of companionship. Home quarantine enabled family members to accompany with the mother, which may

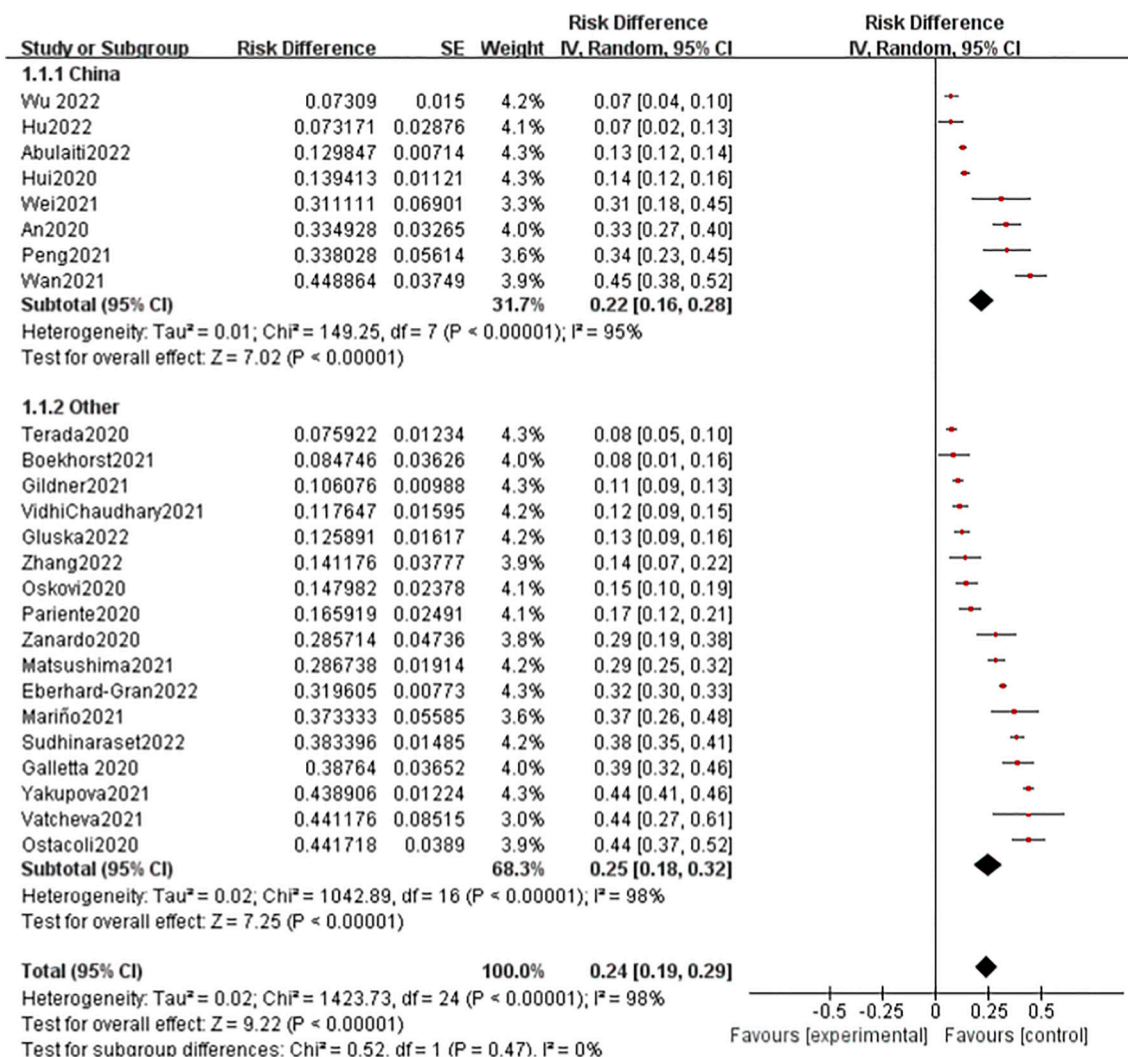


Fig. 3. Forest plot assessing the prevalence of postpartum depression in China and other countries during the COVID-19 pandemic.

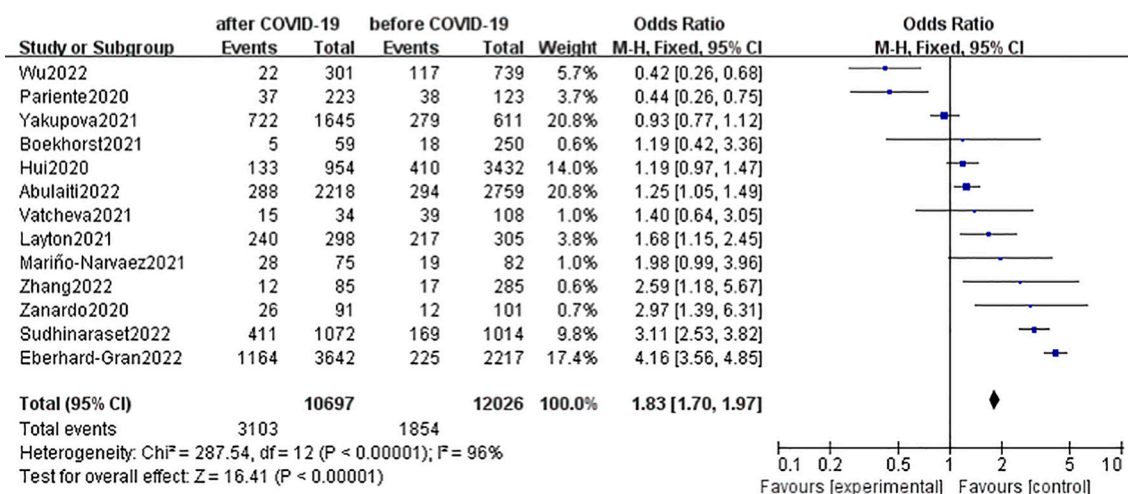


Fig. 4. Forest plot of pooled OR for postpartum depression at different periods (during COVID-19 vs before COVID-19).

alleviate the production and fear of the COVID-19 pandemic, reducing the prevalence of PPD. In fact, companionship due to the home quarantine during the COVID-19 pandemic had a similar impact on the prevalence of PPD in other countries too (Gildner et al., 2021; Terada

et al., 2021).

Overall, although the COVID-19 pandemic directly impacts PPD prevalence, region, social support, social welfare system, the medical system, and economic development significantly influence the level of

postpartum depression. It is worth noting that distress related to the absence of partner or family members was mentioned widely (Galletta et al., 2022; Matsushima et al., 2021; Ostacoli et al., 2020; Terada et al., 2021). It is essential to have good social family support and newborn care during the period of isolation and closure to alleviate the impact on mothers. In addition, strict quarantine-lockdown policies and dynamic zero-COVID policies are put in place in China. These policies are based on the situation, keeping adapted to new changes and remaining transparent, which will better take into account the needs of epidemic prevention and social and economic development, may also put people at ease and increase people's life-satisfaction. All of above mentioned relieve people's mental health and reduce the incidence of mental disorders, especially the prevalence of PPD. However, the limitations in this review included the following aspects. First, most studies used the EPDS scale while some used the PHQ-9 scale, so the difference in PPD prevalence between the two scales was unable to assess. Also, we did not summarize all the risk factors and protective factors mentioned in the included studies, which need further research. Finally, our review did not distinguish postpartum women confirmed or suspected of COVID-19 from those without, so the findings may not represent the whole impact the COVID-19 had on postpartum depression.

## Funding

The grants that supported our study are as follows: National Natural Science Foundation of China (Grant ref.: 81703205) and the Natural Science Foundation of Chongqing (cstc2020jcyj-msxmX0529).

## CRedit authorship contribution statement

Bin Chen and Chenxinzi Lin designed the study, carried out the statistical analysis and wrote the paper. Qiuguo Wang, Minmin Wang and Shiyang Guo were responsible for literature review and inclusion data extraction and assisted with writing the original draft. Youjing Yang and Qianmin Li were assisted with writing the original draft and revised the manuscript. Shasha Tao was responsible for conceptualization, visualization, writing– review & editing, supervision and project administration.

## Conflict of Interest

There is no conflict of interest and manuscript has been approved for publication by all of the authors listed.

## Acknowledgment

We are grateful to all reviewers for their valuable suggestions on improving the manuscript.

## References

- Abulaiti, A., Abudurexiti, M., Nuermaimaiti, A., Kelimu, A., 2022. Analysis of the incidence and influencing factors of postpartum depression and anxiety: a cross-sectional study in Xinjiang from 2018 to 2021. *J. Affect. Disord.* 302, 15–24. <https://doi.org/10.1016/j.jad.2022.01.069>.
- Ali, G.C., Ryan, G., De Silva, M.J., 2016. Validated screening tools for common mental disorders in low and middle income countries: a systematic review. *PLoS ONE* 11, e0156939. <https://doi.org/10.1371/journal.pone.0156939>.
- An, R., Chen, X., Wu, Y., Liu, J., Deng, C., Liu, Y., Guo, H., 2021. A survey of postpartum depression and health care needs among Chinese postpartum women during the pandemic of COVID-19. *Arch. Psychiatr. Nurs.* 35, 172–177. <https://doi.org/10.1016/j.apnu.2021.02.001>.
- Boekhorst, M., Muskens, L., Hulsbosch, L.P., Van Deun, K., Bergink, V., Pop, V., van den Heuvel, M.I., 2021. The COVID-19 outbreak increases maternal stress during pregnancy, but not the risk for postpartum depression. *Arch. Womens Ment. Health* 24, 1037–1043. <https://doi.org/10.1007/s00737-021-01104-9>.
- Chen, Q., Li, W., Xiong, J., Zheng, X., 2022. Prevalence and risk factors associated with postpartum depression during the COVID-19 pandemic: a literature review and meta-analysis. *Int. J. Environ. Res. Public Health* 19. <https://doi.org/10.3390/ijerph19042219>.

- Dadi, A.F., Miller, E.R., Mwanri, L., 2020. Postnatal depression and its association with adverse infant health outcomes in low- and middle-income countries: a systematic review and meta-analysis. *BMC Pregnancy Childbirth* 20, 416. <https://doi.org/10.1186/s12884-020-03092-7>.
- Doyle, F.L., Klein, L., 2020. Postnatal depression risk factors: an overview of reviews to inform COVID-19 research, clinical, and policy priorities. *Front. Glob. Womens Health* 1, 577273. <https://doi.org/10.3389/fgwh.2020.577273>.
- Eberhard-Gran, M., Engelsen, L.Y., Al-Zirqi, I., Vangen, S., 2022. Depressive symptoms and experiences of birthing mothers during COVID-19 pandemic. *Tidsskr. Nor. Lægeforen.* 142. <https://doi.org/10.4045/tidsskr.21.0450>.
- Esterwood, E., Saeed, S.A., 2020. Past epidemics, natural disasters, COVID19, and mental health: learning from history as we deal with the present and prepare for the future. *Psychiatr. Q.* 91, 1121–1133. <https://doi.org/10.1007/s1126-020-09808-4>.
- Evagorou, O., Arvaniti, A., Samakouri, M., 2016. Cross-cultural approach of postpartum depression: manifestation, practices applied, risk factors and therapeutic interventions. *Psychiatr. Q.* 87, 129–154. <https://doi.org/10.1007/s1126-015-9367-1>.
- Fallon, V., Davies, S.M., Silverio, S.A., Jackson, L., De Pascalis, L., Harrold, J.A., 2021. Psychosocial experiences of postnatal women during the COVID-19 pandemic. A UK-wide study of prevalence rates and risk factors for clinically relevant depression and anxiety. *J. Psychiatr. Res.* 136, 157–166. <https://doi.org/10.1016/j.jpsychires.2021.01.048>.
- Galletta, M., Oliveira, A., Albertini, J., Benute, G.G., Peres, S.V., Brizot, M.L., Francisco, R., 2022. Postpartum depressive symptoms of Brazilian women during the COVID-19 pandemic measured by the Edinburgh Postnatal Depression Scale. *J. Affect. Disord.* 296, 577–586. <https://doi.org/10.1016/j.jad.2021.09.091>.
- Gildner, T.E., Uwizeye, G., Milner, R.L., Alston, G.C., Thayer, Z.M., 2021. Associations between postpartum depression and assistance with household tasks and childcare during the COVID-19 pandemic: evidence from American Mothers. *BMC Pregnancy Childbirth* 21, 828. <https://doi.org/10.1186/s12884-021-04300-8>.
- Gluska, H., Shiffman, N., Mayer, Y., Elyasyan, L., Elia, N., Daher, R., Sharon Weiner, M., Miremberg, H., Kovo, M., Biron-Shental, T., Gabbay-Benziv, R., 2022. Maternal fear of COVID-19 and prevalence of postnatal depression symptoms, risk and protective factors. *J. Psychiatr. Res.* 148, 214–219. <https://doi.org/10.1016/j.jpsychires.2022.01.015>.
- Hu, M., Zhou, Y., Xue, M., Ren, Y., Li, S., Wang, R., Qi, L., Zeng, L., Liu, Z., Qian, W., Yang, J., Zhou, X., Chen, L., Zhang, X., 2022. The prevalence and correlates of peripartum depression in different stages of pregnancy during COVID-19 pandemic in China. *BMC Pregnancy Childbirth* 22, 114. <https://doi.org/10.1186/s12884-022-04428-1>.
- Hui, P.W., Ma, G., Seto, M., Cheung, K.W., 2021. Effect of COVID-19 on delivery plans and postnatal depression scores of pregnant women. *Hong Kong Med. J.* 27, 113–117. <https://doi.org/10.12809/hkmj208774>.
- Jinru, Y., Ying, W., Ziling, N.L., Wenwen, W.U., Xiaohe, W., 2020. Policy guidelines analysis of COVID-19 epidemic prevention and control implications for hospital management in China. *Chin.Hosp.Manag.* 40, 1–5.
- Layton, H., Owais, S., Savoy, C.D., Van Lieshout, R.J., 2021. Depression, anxiety, and mother-infant bonding in women seeking treatment for postpartum depression before and during the COVID-19 pandemic. *J. Clin. Psychiatry* 82. <https://doi.org/10.4088/JCP.21m13874>.
- Lebel, C., MacKinnon, A., Bagshawe, M., Tomfohr-Madsen, L., Giesbrecht, G., 2020. Elevated depression and anxiety symptoms among pregnant individuals during the COVID-19 pandemic. *J. Affect. Disord.* 277, 5–13. <https://doi.org/10.1016/j.jad.2020.07.126>.
- Liu, C.H., Erdei, C., Mittal, L., 2021. Risk factors for depression, anxiety, and PTSD symptoms in perinatal women during the COVID-19 pandemic. *Psychiatry Res.* 295, 113552. <https://doi.org/10.1016/j.psychres.2020.113552>.
- Mariño-Narvaez, C., Puertas-Gonzalez, J.A., Romero-Gonzalez, B., Peralta-Ramirez, M.I., 2021. Giving birth during the COVID-19 pandemic: the impact on birth satisfaction and postpartum depression. *Int.J.Gynaecol.Obstet.* 153, 83–88. <https://doi.org/10.1002/ijgo.13565>.
- Matsushima, M., Tsuno, K., Okawa, S., Hori, A., Tabuchi, T., 2021. Trust and well-being of postpartum women during the COVID-19 crisis: depression and fear of COVID-19. *SSM Popul. Health* 15, 100903. <https://doi.org/10.1016/j.ssmph.2021.100903>.
- Myo, T., Hong, S.A., Thephtien, B.O., Hongkraitel, N., 2021. Prevalence and factors associated with postpartum depression in primary healthcare centres in Yangon, Myanmar. *Malays. J. Med. Sci.* 28, 71–86. <https://doi.org/10.21315/mjms2021.28.4.8>.
- Norhayati, M.N., Hazlina, N.H., Asrenee, A.R., Emilin, W.M., 2015. Magnitude and risk factors for postpartum symptoms: a literature review. *J. Affect. Disord.* 175, 34–52. <https://doi.org/10.1016/j.jad.2014.12.041>.
- O'Hara, M.W., McCabe, J.E., 2013. Postpartum depression: current status and future directions. *Annu. Rev. Clin. Psychol.* 9, 379–407. <https://doi.org/10.1146/annurev-clinpsy-050212-185612>.
- Oskovi-Kaplan, Z.A., Buyuk, G.N., Ozgu-Erdinc, A.S., Keskin, H.L., Ozbaz, A., Moraloglu Tekin, O., 2021. The effect of COVID-19 pandemic and social restrictions on depression rates and maternal attachment in immediate postpartum women: a preliminary study. *Psychiatr. Q.* 92, 675–682. <https://doi.org/10.1007/s1126-020-09843-1>.
- Ostacoli, L., Cosma, S., Bevilacqua, F., Berchiolla, P., Bovetti, M., Carosso, A.R., Malandrone, F., Carletto, S., Benedetto, C., 2020. Psychosocial factors associated with postpartum psychological distress during the COVID-19 pandemic: a cross-sectional study. *BMC Pregnancy Childbirth* 20, 703. <https://doi.org/10.1186/s12884-020-03399-5>.
- Pariente, G., Wissotzky Broder, O., Sheiner, E., Lanxner Battat, T., Mazor, E., Yaniv Salem, S., Kosef, T., Wainstock, T., 2020. Risk for probable post-partum depression

- among women during the COVID-19 pandemic. *Arch. Womens Ment. Health* 23, 767–773. <https://doi.org/10.1007/s00737-020-01075-3>.
- Peng, S., Zhang, Y., Liu, H., Huang, X., Noble, D.J., Yang, L., Lu, W., Luo, Y., Zhu, H., Cao, L., Liu, C., Chen, Y., Zhang, P., Xia, S., Narayan, A., 2021. A multi-center survey on the postpartum mental health of mothers and attachment to their neonates during COVID-19 in Hubei Province of China. *Ann. Transl. Med.* 9, 382. <https://doi.org/10.21037/atm-20-6115>.
- Pierce, M., Hope, H., Ford, T., Hatch, S., Hotopf, M., John, A., Kontopantelis, E., Webb, R., Wessely, S., McManus, S., Abel, K.M., 2020. Mental health before and during the COVID-19 pandemic: a longitudinal probability sample survey of the UK population. *Lancet Psychiatry* 7, 883–892. [https://doi.org/10.1016/S2215-0366\(20\)30308-4](https://doi.org/10.1016/S2215-0366(20)30308-4).
- Qinghong, Z., 2001. Role dilemmas: a report on youth and families in contemporary Europe. In: *China Youth Study*, pp. 71–73.
- Sudhinaraset, M., Landrian, A., Mboya, J., Golub, G., 2022. The economic toll of COVID-19: a cohort study of prevalence and economic factors associated with postpartum depression in Kenya. *Int.J.Gynaecol.Obstet.* <https://doi.org/10.1002/ijgo.14142>.
- Terada, S., Kinjo, K., Fukuda, Y., 2021. The relationship between postpartum depression and social support during the COVID-19 pandemic: a cross-sectional study. *J. Obstet. Gynaecol. Res.* 47, 3524–3531. <https://doi.org/10.1111/jog.14929>.
- Thapa, S.B., Mainali, A., Schwank, S.E., Acharya, G., 2020. Maternal mental health in the time of the COVID-19 pandemic. *Acta Obstet. Gynecol. Scand.* 99, 817–818. <https://doi.org/10.1111/aogs.13894>.
- Vatcheva, T., Mostaert, A., Van Ingelgem, V., Henrion, E., Legros, L., 2021. Impact of COVID-19 pandemic on postpartum depression among mothers of extreme and early preterm infants. *Int.J.Gynaecol.Obstet.* 155, 490–495. <https://doi.org/10.1002/ijgo.13859>.
- VidhiChaudhary, Puri, M., Kukreti, P., Chhapola, V., Kanwar, D., Tumpati, A., Jakhar, P., Singh, G., 2021. Postpartum depression in COVID-19 risk-stratified hospital zones: a cross-sectional study from India. *J. Affect. Disord. Rep.* 6, 100269. <https://doi.org/10.1016/j.jadr.2021.100269>.
- Wan Mohamed Radzi, C., Salarzadeh Jenatabadi, H., Samsudin, N., 2021. Postpartum depression symptoms in survey-based research: a structural equation analysis. *BMC Public Health* 21, 27. <https://doi.org/10.1186/s12889-020-09999-2>.
- Wang, C., Pan, R., Wan, X., Tan, Y., Xu, L., McIntyre, R.S., Choo, F.N., Tran, B., Ho, R., Sharma, V.K., Ho, C., 2020. A longitudinal study on the mental health of general population during the COVID-19 epidemic in China. *Brain Behav. Immun.* 87, 40–48. <https://doi.org/10.1016/j.bbi.2020.04.028>.
- Wisner, K.L., Sit, D.K., McShea, M.C., Rizzo, D.M., Zoretich, R.A., Hughes, C.L., Eng, H.F., Luther, J.F., Wisniewski, S.R., Costantino, M.L., Confer, A.L., Moses-Kolko, E.L., Famy, C.S., Hanusa, B.H., 2013. Onset timing, thoughts of self-harm, and diagnoses in postpartum women with screen-positive depression findings. *JAMA Psychiatry* 70, 490–498. <https://doi.org/10.1001/jamapsychiatry.2013.87>.
- Wu, Y., Ye, R., Wang, Q., Sun, C., Ji, Y., Zhou, H., Chang, W., 2022. Association of COVID-19 lockdown during the perinatal period with postpartum depression: evidence from rural areas of Western China. *Health Commun.* 1–8. <https://doi.org/10.1080/10410236.2022.2036425>.
- Xing, W., Jiabao, H., Min, H.U., 2021. Impact of the COVID-19 outbreak on depression and anxiety among perinatal women in Wuhan. *Med.J.Wuhan Univ.* 42, 724–728.
- Yakupova, V., Suarez, A., Kharchenko, A., 2021. Birth experience, postpartum PTSD and depression before and during the pandemic of COVID-19 in Russia. *Int. J. Environ. Res. Public Health* 19. <https://doi.org/10.3390/ijerph19010335>.
- Ying, W., Jing, L., Lingli, D., Jinzhi, G., Xiaolin, H.U., Lin, C., 2021. Analysis of maternal psychological problems and their infant outcomes during the COVID-19 pandemic. *Chin.J.Reprod.Health* 32, 354–358.
- Zanardo, V., Manghina, V., Giliberti, L., Vettore, M., Severino, L., Straface, G., 2020. Psychological impact of COVID-19 quarantine measures in northeastern Italy on mothers in the immediate postpartum period. *Int.J.Gynaecol.Obstet.* 150, 184–188. <https://doi.org/10.1002/ijgo.13249>.
- Zhang, C., Okeke, J.C., Levitan, R.D., Murphy, K.E., Foshay, K., Lye, S.J., Knight, J.A., Matthews, S.G., 2022. Evaluating depression and anxiety throughout pregnancy and after birth: impact of the COVID-19 pandemic. *Am. J. Obstet. Gynecol.* 4, 100605. <https://doi.org/10.1016/j.ajogmf.2022.100605>. MFM.