

## Catabolite Repression of the Citrate Fermentation Genes in *Klebsiella pneumoniae*: Evidence for Involvement of the Cyclic AMP Receptor Protein

MARGARETA MEYER,<sup>1</sup> PETER DIMROTH,<sup>1</sup> AND MICHAEL BOTT<sup>2\*</sup>

*Institut für Mikrobiologie, Eidgenössische Technische Hochschule Zürich, 8092 Zürich, Switzerland,<sup>1</sup>  
and Institut für Biotechnologie 1, Forschungszentrum Jülich, 52425 Jülich, Germany<sup>2</sup>*

Received 17 January 2001/Accepted 4 June 2001

*Klebsiella pneumoniae* is able to grow anaerobically with citrate as a sole carbon and energy source by a fermentative pathway involving the Na<sup>+</sup>-dependent citrate carrier CitS, citrate lyase, and oxaloacetate decarboxylase. The corresponding genes are organized in the divergent *citC* and *citS* operons, whose expression is strictly dependent on the citrate-sensing CitA-CitB two-component system. Evidence is provided here that the citrate fermentation genes are subject to catabolite repression, since anaerobic cultivation with a mixture of citrate and glucose or citrate and gluconate resulted in diauxic growth. Glucose, gluconate, and also glycerol decreased the expression of a chromosomal *citS-lacZ* fusion by 60 to 75%, whereas a direct inhibition of the citrate fermentation enzymes was not observed. The purified cyclic AMP (cAMP) receptor protein (CRP) of *K. pneumoniae* bound to two sites in the *citC-citS* intergenic region, which were centered at position –41.5 upstream of the *citC* and *citS* transcriptional start sites. Binding was apparently stimulated by the response regulator CitB. These data indicate that catabolite repression of the citrate fermentation genes is exerted by CRP and that in the absence of repressing carbon sources the cAMP-CRP complex serves to enhance the basal, CitB-dependent transcription level.

*Klebsiella pneumoniae*, a member of the *Enterobacteriaceae*, is able to grow with citrate as a sole carbon and energy source under anoxic conditions (for a review, see reference 4). Citrate fermentation involves uptake by a Na<sup>+</sup>-dependent citrate carrier (32, 44), cleavage into acetate and oxaloacetate by citrate lyase, and decarboxylation of oxaloacetate to pyruvate by the Na<sup>+</sup> ion pump oxaloacetate decarboxylase (12, 13). The conversion of pyruvate to acetate, formate, CO<sub>2</sub>, and H<sub>2</sub> (7, 38) is catalyzed by enzymes generally involved in anaerobic pyruvate catabolism. The citrate-specific fermentation genes form a cluster of two divergent operons (5, 6). The *citCDEFG* operon encodes citrate lyase ligase (CitC), the citrate lyase subunits (CitD, CitE, and CitF), and triphosphoribosyl-dephospho-coenzyme A synthase (CitG), which catalyzes the formation of a precursor of the citrate lyase prosthetic group (36, 37). The *citS-oadGAB-citAB* operon encodes the citrate carrier CitS, the oxaloacetate decarboxylase subunits (OadG, OadA, and OadB), and a two-component system composed of the sensor kinase CitA and the response regulator CitB (Fig. 1A). The CitA-CitB system was shown to be essential for the expression of both operons (6). CitA presumably functions as a sensor of extracellular citrate, since the periplasmic domain of this membrane-bound protein binds citrate with high affinity ( $K_d \approx 6 \mu\text{M}$ ) and specificity (23). CitB acts as a transcriptional activator of the *citS* and the *citC* operons and binds to two sites in the 193-bp *citC-citS* intergenic region (Fig. 1) in a phosphorylation-dependent fashion (24).

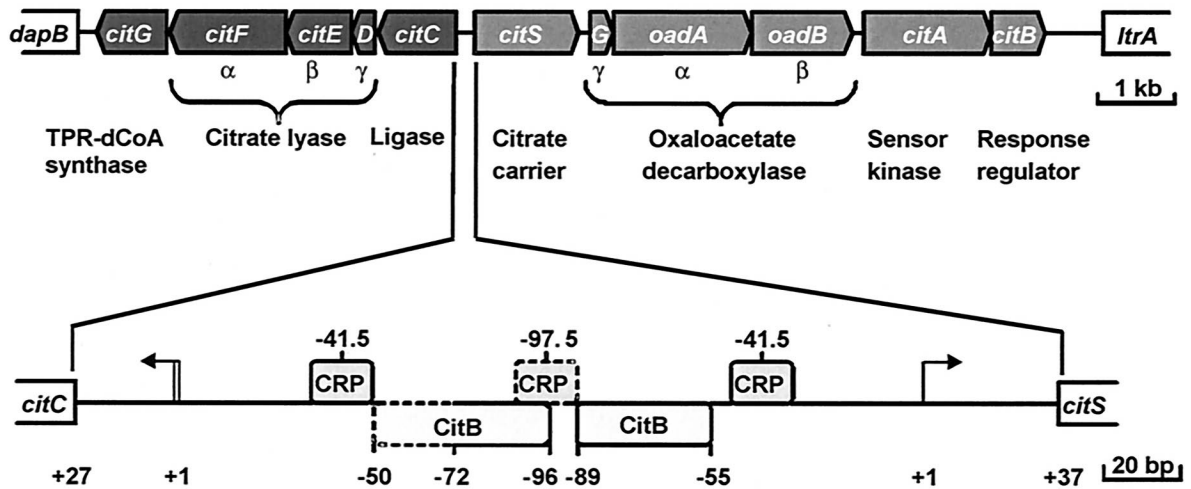
Maximal expression of a chromosomally integrated translational *citS'-lacZ* fusion requires citrate, anoxic conditions, and Na<sup>+</sup> ions (6). Whereas the inducing effect of citrate can be attributed to the CitA-CitB system, the proteins responsible for the regulatory effects of Na<sup>+</sup> and O<sub>2</sub> are not yet known. In citrate minimal media containing glucose or glycerol in addition, expression of *citS'-lacZ* was strongly reduced (6), supporting previous evidence for catabolite repression of the citrate fermentation genes (7, 10).

In enterobacteria, the cyclic AMP (cAMP) receptor protein (CRP) is a key player in catabolite repression (3). A comparison of the *citC-citS* intergenic DNA sequence with the palindromic CRP consensus binding site (2) revealed three potential binding sites for CRP (Fig. 1), one centered at –41.5 bp in front of the *citS* transcription start site, another at –41.5 bp in front of the *citC* transcription start site, and the third in between. The –41.5 sites fulfil the exact spacing requirement of class II CRP-dependent promoters (9, 15), where CRP alone is sufficient to activate transcription.

In this work we analyzed the effects of glucose, gluconate, and glycerol on citrate fermentation. Under anaerobic conditions, glucose is taken up by the phosphoenolpyruvate (PEP)-dependent phosphotransferase system (PTS) and fermented to the products characteristic of butanediol fermentation (1). The occurrence of this fermentation type in the *K. pneumoniae* strain used in this work was confirmed by the detection of the characteristic product acetoin. Gluconate uptake and fermentation have not been studied in detail but most likely involve H<sup>+</sup> symport as in *Escherichia coli* (20, 31) and the Entner-Doudoroff pathway. Glycerol, which presumably is taken up by a glycerol facilitator (46), is fermented by *K. pneumoniae* to 1,3-propanediol and acetate as major products (14, 21, 22).

\* Corresponding author. Mailing address: Institut für Biotechnologie 1, Forschungszentrum Jülich, 52425 Jülich, Germany. Phone: 49 2461 615515. Fax: 49 2461 612710. E-mail: m.bott@fz-juelich.de.

**A**



**B**

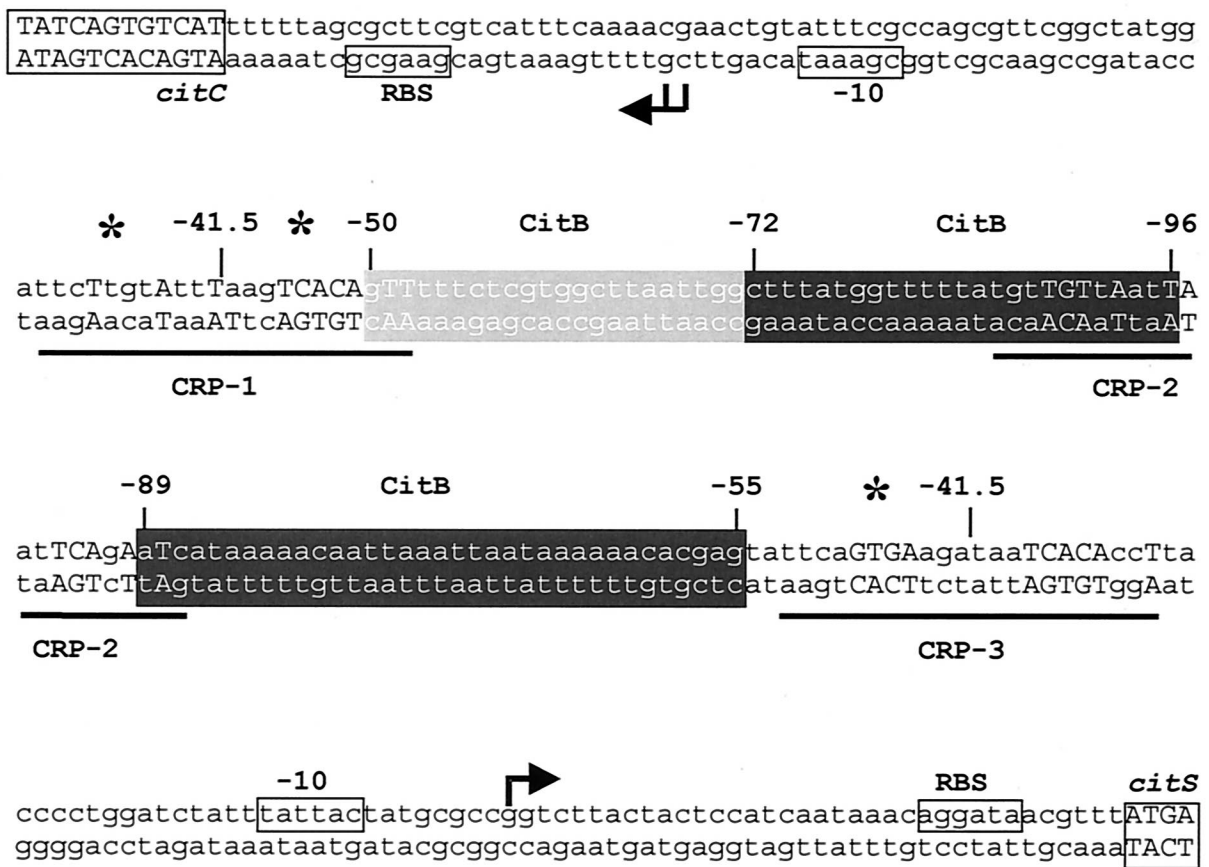


FIG. 1. Organization of the citrate-specific fermentation genes in *K. pneumoniae*. The 13-kb DNA cluster encompassing 11 genes involved in citrate fermentation is shown in panel A. The lower part shows an enlargement of the *citC-citS* intergenic region. The arrows indicate transcription start sites. The positions of the CitB binding sites as deduced from DNase I footprints and of putative CRP binding sites are indicated. The sequence of the *citC-citS* intergenic region is shown in panel B. Indicated are the coding regions, putative ribosome binding sites (RBS), the transcriptional start sites as determined by primer extension (25), the -10 regions, the CitB binding sites, the putative CRP binding sites, and the hypersensitive sites observed in DNase I footprints (asterisks).

Several of the glycerol fermentation genes, which form the *dha* regulon, have been cloned and sequenced (11, 41–43).

Here we show that glucose, gluconate, and glycerol, despite the differences in uptake and catabolism, inhibit the expression of the citrate fermentation genes, thus representing an example of catabolite repression under fermentative conditions. In addition, evidence for the involvement of the CRP-cAMP system in this process is provided.

## MATERIALS AND METHODS

**Bacterial strains and culture media.** *K. pneumoniae* ATCC 13882, which is designated the wild type, was grown as described previously (6). *E. coli* DH5 $\alpha$  (Bethesda Research Laboratories) was used as a host for all cloning procedures. *E. coli* BL21(DE3), which contains the T7 RNA polymerase gene under the control of the isopropyl- $\beta$ -D-thiogalactopyranoside (IPTG)-inducible *lacUV5* promoter (39), served as host for overproduction of the CRP protein from the pET expression plasmid. The *E. coli* strains were routinely grown at 37°C either in Luria-Bertani (LB) medium or in 2 $\times$  YT medium (34). *K. pneumoniae* strain MB1 (6), which contains a chromosomally integrated translational *citS'*-*lacZ* fusion, was grown in minimal media containing citrate, glycerol, or both as described previously (6). For growth experiments, a minimal medium containing 100 mM potassium phosphate buffer (pH 7.0), 50 mM NaCl, 10 mM (NH<sub>4</sub>)<sub>2</sub>SO<sub>4</sub>, 1 mM Mg<sub>2</sub>SO<sub>4</sub>, and 0.4% trace element solution (180 mM CaCl<sub>2</sub>, 0.77 mM CoCl<sub>2</sub>, 0.505 mM MnCl<sub>2</sub>, 0.413 mM Na<sub>2</sub>MoO<sub>4</sub>, and 7.2 mM FeSO<sub>4</sub>) was used. Unless indicated otherwise, potassium citrate, glucose, potassium gluconate, or glycerol was added as a carbon source (20 mM). Anaerobic cultures were grown in flasks with septa at 37°C under nitrogen (150 kPa) without shaking. Precultures were washed in 100 mM potassium phosphate buffer (pH 7.0) prior to inoculation. The initial optical density at 600 nm (OD<sub>600</sub>) after inoculation was approximately 0.05.

**$\beta$ -Galactosidase assays and determination of citrate.** The  $\beta$ -galactosidase assays of strain MB1 grown under various conditions were performed with permeabilized cells essentially as described by Miller (25). The citrate content of culture supernatants was determined spectrophotometrically at 365 nm using a coupled assay containing 2 U of malate dehydrogenase (pig heart; Boehringer Mannheim), 1 U of lactate dehydrogenase (hog muscle; Boehringer Mannheim), and 0.2 to 0.4 U of citrate lyase (*Aerobacter aerogenes*; Boehringer Mannheim) in a 50 mM glycylglycine buffer at pH 7.9 in the presence of 2 mM ZnCl<sub>2</sub> and 0.5 mM NADH (5).

**Construction of pET-CRP.** Chromosomal DNA of *K. pneumoniae* ATCC 13882 was used as template for the PCR with Vent DNA polymerase (New England Biolabs). The primers pCRP-fo (5'-AGATATACATATGGTGCTTGCAAACCGCAAAC-3') and pCRP-re (5'-GTGGTGCTCGAGTTAACGGGTGCCGTAGACGACG-3') introduced an *NdeI* restriction site at the initiation codon and an *XhoI* restriction site immediately downstream of the stop codon (restriction sites are underlined), respectively. The coding sequence of the primers was designed according to the nucleotide sequence of the *K. aerogenes* *crp* gene (GenBank accession number M68973). The resulting 655-bp product was cleaved with *NdeI* and *XhoI* and subsequently cloned into pET24b (Novagen) cut with the same enzymes. The resulting plasmid pET-CRP was sequenced with T7 promoter and T7 terminator primers. Two positions were found to differ from that of the published *K. aerogenes* sequence: C instead of A at position 12 and A in the place of C at position 507. These differences, however, do not result in an altered amino acid sequence.

**Purification of CRP and CitB<sub>HIS</sub>.** *E. coli* BL21(DE3) containing the expression plasmid pET-CRP was grown in LB medium including kanamycin (50  $\mu$ g/ml). The cultures were incubated at 37°C and 180 rpm until the OD<sub>600</sub> reached a value between 0.6 and 0.8. Then, IPTG was added to a final concentration of 1 mM, and incubation was continued for another 3 h. Cells were harvested by centrifugation, washed once in 20 ml of buffer A plus 0.2 M NaCl (buffer A consists of 20 mM sodium phosphate [pH 7.2], 2 mM EDTA, and 5 mM  $\beta$ -mercaptoethanol), and resuspended in the same buffer (5 g [wet weight]/ml). After addition of the protease inhibitor diisopropyl fluorophosphate (1 mM) and 0.2 mg of DNase I/ml the cells were disrupted by three passages through a French pressure cell at 108 MPa. Intact cells and cell debris were removed by centrifugation (30 min at 27,000  $\times$  g). The cell extract was ultracentrifuged (60 min at 150,000  $\times$  g), and the resulting supernatant was used for purification of CRP by affinity chromatography with cAMP agarose (Sigma A0144) as described previously (47). Purification was monitored by sodium dodecyl sulfate-polyacrylamide gel electrophoresis (SDS-PAGE), and protein concentrations were determined

with the Bradford assay kit (Bio-Rad Laboratories). Buffer exchange was performed by gel filtration (PD-10 columns; Pharmacia). CitB<sub>HIS</sub> was purified by Ni<sup>2+</sup> chelate affinity chromatography as described previously (24).

**DNA-protein interaction studies.** For gel retardation assays of CRP, a 348-bp *MluI-SphI* DNA fragment covering the entire intergenic region between *citC* and *citS* was labeled with the Klenow fragment of *E. coli* DNA polymerase I and suitable  $\alpha$ -<sup>32</sup>P-radiolabeled nucleotides according to the protocol of the manufacturer. Unincorporated nucleotides were removed using the QIAquick-spin PCR purification kit (Qiagen). An equal volume of a serial dilution of CRP in TKMD buffer (50 mM Tris-HCl [pH 7.5], 200 mM KCl, 5 mM MgCl<sub>2</sub>, 5 mM dithiothreitol) containing 200  $\mu$ M cAMP was mixed with the DNA premixture, which contained the radiolabeled fragment (86 fmol; ~280,000 cpm), competitor DNA (0.2  $\mu$ g of sonicated salmon sperm DNA/ $\mu$ l), and tracking dye (0.02% xylene cyanol FF) in 2 $\times$  footprint buffer (80 mM Tris-HCl [pH 7.2], 12 mM MgCl<sub>2</sub>, 2 mM dithiothreitol, 20% glycerol). The mixture was incubated for 20 min at room temperature and subsequently loaded onto a 10% native polyacrylamide gel (ratio of acrylamide to bisacrylamide, 75:1 [wt/wt]) with 0.5 $\times$  TBE buffer (TBE buffer is 89 mM Tris base, 89 mM boric acid, 2.5 mM EDTA; final pH 8.3) containing 20  $\mu$ M cAMP as gel and running buffer. Electrophoresis was carried out at a constant voltage of 180 V and cooled with tap water. The gel was subsequently dried and exposed to a phosphorimager screen (Molecular Dynamics).

The DNase I footprint assays with CRP and CitB<sub>HIS</sub> were carried out essentially as described for CitB<sub>HIS</sub> (24). Constant amounts of the labeled 348-bp *MluI-SphI* DNA fragment (~300,000 cpm) were incubated with CRP (final concentration, 3.7 or 2.0  $\mu$ M) and phosphorylated CitB<sub>HIS</sub> (final concentration, 0.4 or 1.6  $\mu$ M). CitB<sub>HIS</sub> was phosphorylated with ATP, and the kinase domain of CitA was fused to the maltose binding protein (MalE-CitAC) as previously described (23, 24). The reaction mixtures contained CRP and/or CitB<sub>HIS</sub>, competitor DNA (20 ng of sonicated salmon sperm DNA/ $\mu$ l), 1 mM cAMP, and the labeled DNA fragment in 1 $\times$  footprint buffer supplemented with 10 mM CaCl<sub>2</sub> and 100 mM KCl. A total of 7.5 U of DNase I was added to start the reaction. A control reaction was carried out with buffer instead of protein solution. If no CRP was present in the reaction mixture, cAMP was omitted. The samples were separated on a 6% denaturing polyacrylamide gel containing 7 M urea.

## RESULTS

**Influence of preculture conditions on anaerobic growth with citrate.** In a first set of experiments, we studied the effect of the preculture conditions on the growth characteristics of *K. pneumoniae* during citrate fermentation. Precultures were grown either anaerobically on citrate minimal medium or aerobically on citrate or glucose minimal medium. Following inoculation with these precultures, fermentative growth on citrate minimal medium started after a lag phase of 0.5, 5, and 10 h, respectively (data not shown). This result confirmed that the citrate fermentation enzymes are not constitutive but are induced under anoxic conditions in the presence of citrate. The reduced lag phase of cells precultured under oxic conditions with citrate might be due to a slightly increased concentration of the CitA-CitB two-component system, allowing for a faster induction upon a shift to anoxic conditions. Comparable induction patterns were previously reported for citrate fermentation by *Salmonella enterica* serovar Typhimurium (45).

**Influence of glucose, gluconate, and glycerol on anaerobic citrate utilization.** To test the influence of glucose, gluconate, and glycerol on citrate fermentation, different concentrations of these carbon sources were added to citrate minimal medium before inoculation with a preculture grown anaerobically with citrate as the sole carbon and energy source. As shown in Fig. 2A, the presence of glucose led to typical diauxic growth curves. The start of the intermediate lag phase was strictly dependent on the glucose concentration, showing that glucose is used preferentially to citrate. If gluconate was added to citrate minimal medium, growth was also diauxic and showed

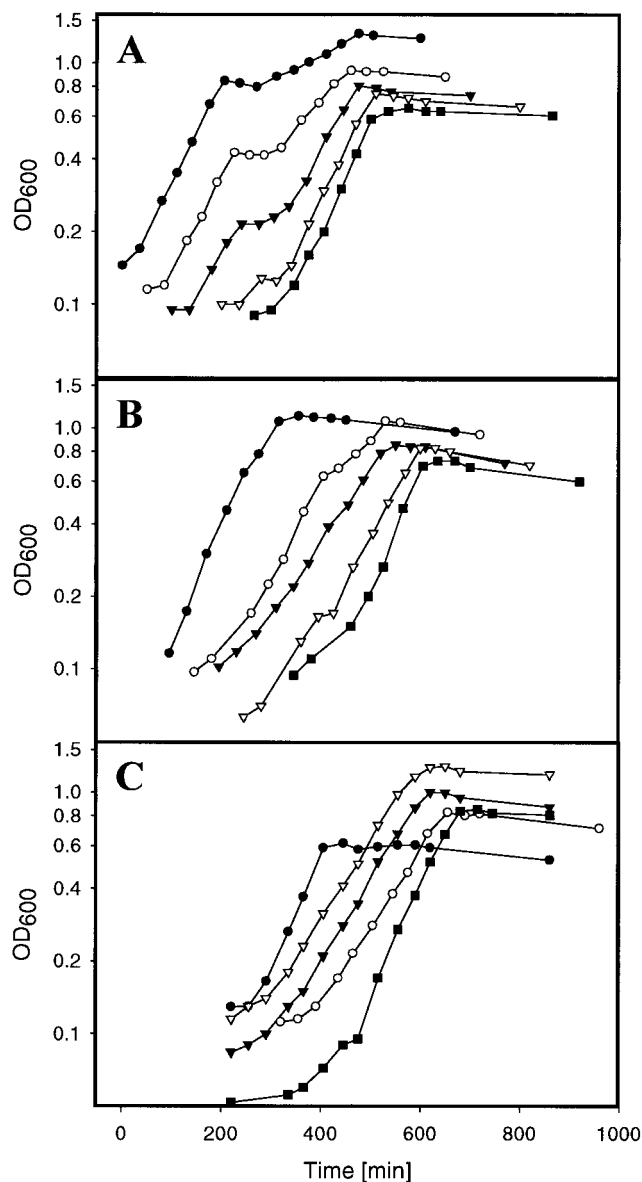


FIG. 2. Anaerobic growth of the *K. pneumoniae* wild type in citrate minimal medium containing different concentrations of glucose (A), gluconate (B), and glycerol (C). The inoculating culture had been grown anaerobically on citrate minimal medium. For the sake of better readability, the individual growth curves are displayed with time differences. Symbols indicate the presence of the following concentrations of glucose, gluconate, or glycerol as noted above: (A) solid circles, 8 mM; open circles, 4 mM; solid triangles, 2 mM; open triangles, 1 mM; solid squares, 0 mM; (B) solid circles, 20 mM; open circles, 8 mM; solid triangles, 4 mM; open triangles, 2 mM; filled squares, 1 mM; (C) open triangles, 20 mM; solid triangles, 10 mM; open circles, 5 mM; solid circles, 0 mM. The solid squares in panel C indicate the presence of glycerol minimal medium without citrate.

preferential use of gluconate. However, the diauxic effect was less pronounced than with glucose (Fig. 2B). When glycerol was present in addition to citrate, no diauxic growth was observed, but the growth rate was slower than in the presence of either substrate alone (Fig. 2C).

The data reported above clearly showed that citrate fermentation is subject to catabolite repression. In several cases it was

shown that catabolite repression is due to direct inhibition of catabolic enzymes by unphosphorylated enzyme IIA<sup>Glc</sup>, e.g., in the case of lactose permease (26, 28) or glycerol kinase (27). We therefore tested whether the addition of glucose, gluconate, or glycerol to citrate-fermenting cells inhibited the further catabolism of citrate. As shown in Fig. 3, the addition of the three different carbon sources led to an only slightly reduced citrate consumption, indicating that none of the proteins specifically involved in citrate fermentation, i.e., the citrate carrier CitS, citrate lyase, and oxaloacetate decarboxylase, is directly inhibited. The small reduction of citrate consumption is probably due to reduced concentrations of these enzymes as a consequence of reduced synthesis (see below).

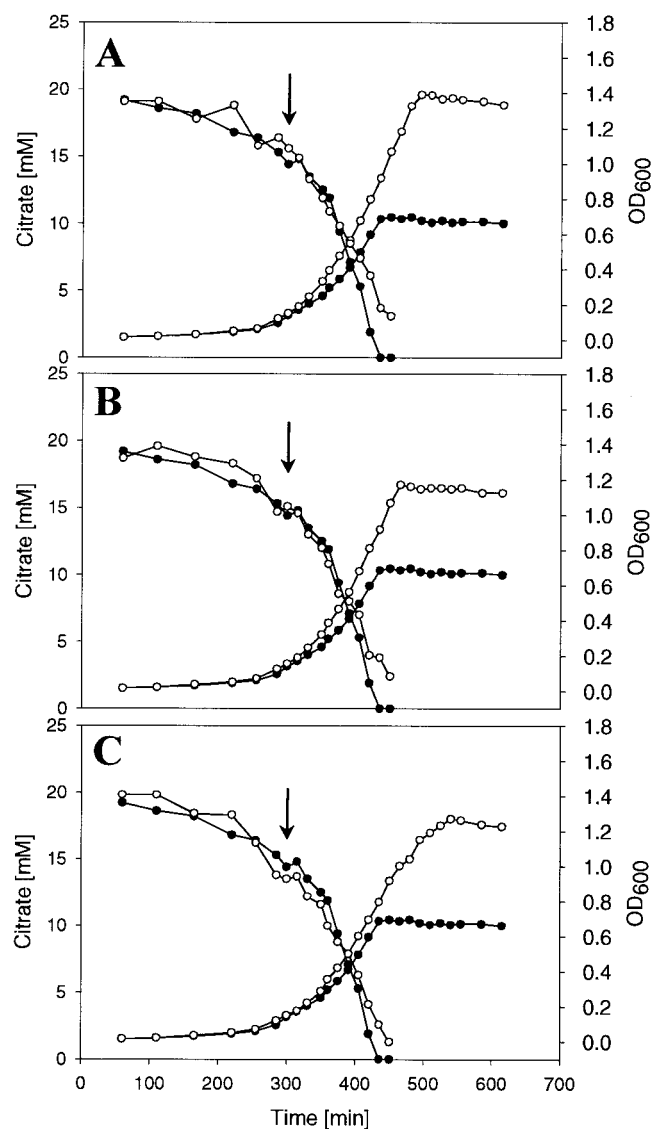


FIG. 3. Anaerobic growth and citrate consumption of the *K. pneumoniae* wild type in citrate minimal medium (solid circles) or in citrate minimal medium with either 4 mM glucose (A), 4 mM gluconate (B), or 10 mM glycerol (C) (indicated in panels A through C by open circles). The additional carbon sources were added at an OD<sub>600</sub> of about 0.15 (arrows).

**Influence of glucose, gluconate, and glycerol on *citS'*-*lacZ* expression.** The above results indicated that catabolite repression of citrate fermentation by glucose, gluconate, and glycerol was at the level of enzyme synthesis. Therefore, the influence of the alternative carbon sources on the expression of the citrate fermentation genes was tested by adding them to a culture of *K. pneumoniae* strain MB1 already growing exponentially on citrate minimal medium. This strain carries a chromosomally integrated *citS'*-*lacZ* fusion (6), which served as reporter for the determination of the expression of the *citS* operon. As shown in Fig. 4B, addition of 4 mM glucose led to a rapid decrease in  $\beta$ -galactosidase activity. Within 3 h, activity dropped from 5,500 to 1,500 Miller units and increased again to  $\sim$ 4,000 Miller units when glucose had been consumed. Although less pronounced, the growth curve was diauxic as in the experiment shown in Fig. 2A. If glucose was added at a higher optical density ( $OD_{600} > 0.15$ ), the diauxic effect disappeared, possibly because all citrate had already been consumed when catabolite repression was relieved. In a control culture, where 4 mM citrate was added instead of glucose,  $\beta$ -galactosidase activity constantly remained between 4,000 and 6,000 Miller units up to the end of growth (Fig. 4A). When 4 mM gluconate was added as an additional carbon source,  $\beta$ -galactosidase activity was reduced from 5,500 to 2,200 Miller units within 3 to 4 h and then increased again to 4,000 Miller units (Fig. 4C). Although there was no intermediate lag phase visible in the growth curve, the increase in  $\beta$ -galactosidase activity showed that gluconate had been consumed and catabolite repression had been relieved. Similar to gluconate, addition of 10 mM glycerol led to a decrease of  $\beta$ -galactosidase activity from 5,500 to about 2,000 Miller units within 3 h and then remained constant at this level up to the end of growth (Fig. 4D). The lack of an increase in  $\beta$ -galactosidase activity in this experiment is due to the high concentration of glycerol added, resulting in a complete consumption of citrate before glycerol has been consumed. In summary, all carbon sources tested reduced expression of the *citS* operon to about 25 to 40% of the level measured in their absence.

Independent evidence for the inhibition of expression of the citrate fermentation genes by glycerol was obtained previously by Northern blot experiments. The level of the transcripts of the *citS* operon and of the *citC* operon in RNA isolated from cells grown anaerobically with citrate and glycerol was significantly lower than in RNA isolated from cells grown anaerobically with citrate as the sole carbon and energy source (6, 24).

**Influence of cAMP on diauxic growth.** The results described above showed that the citrate fermentation genes are subject to catabolite repression. Since in enterobacteria the CRP-cAMP system plays a central role in catabolite repression and since three potential CRP binding sites are present in the *citC-citS* intergenic region, studies were performed to determine whether this system also regulates expression of the *K. pneumoniae* citrate fermentation genes. First, the effect of exogenously added cAMP on growth of the *K. pneumoniae* wild type in citrate minimal medium containing 2 mM glucose was tested. To this end, three cultures were inoculated with a pre-culture grown anaerobically in citrate minimal medium. To two of these cultures, cAMP (20 mM) was added at an  $OD_{600}$  of 0.095 and 0.271, respectively, while the third one served as control and received no cAMP (Fig. 5). Since 2 mM glucose

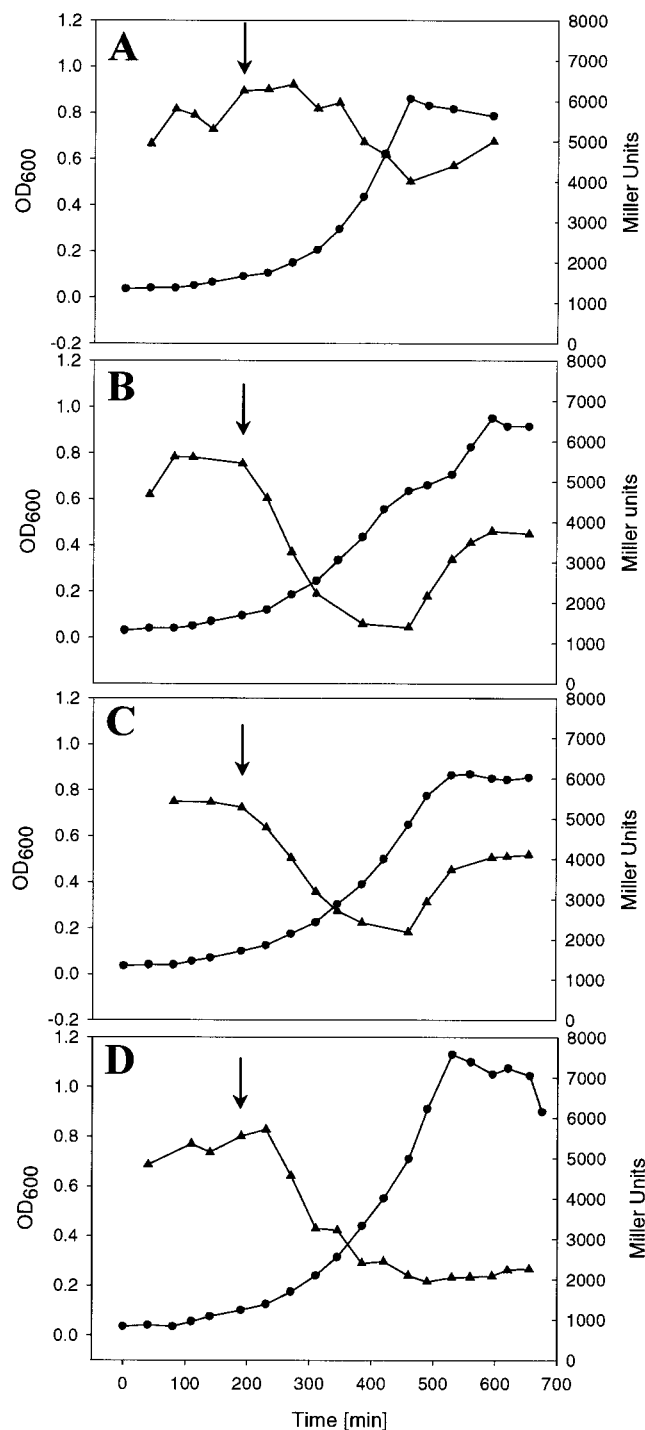


FIG. 4.  $\beta$ -Galactosidase activity in Miller units (triangles) and  $OD_{600}$  (circles) of *K. pneumoniae* strain MB1 during anaerobic growth in citrate minimal medium with either 4 mM glucose (B), 4 mM gluconate (C), or 10 mM glycerol (D) added at an  $OD_{600}$  of 0.1 (arrows). In a control culture (A), 4 mM citrate was added at an  $OD_{600}$  of 0.1 (arrow).

supported growth to an  $OD_{600}$  of approximately 0.4, cAMP addition preceded glucose depletion. The addition of cAMP at an  $OD_{600}$  of 0.271 clearly diminished the diauxic effect observed in the control culture, indicating an enhanced expression of the citrate fermentation genes prior to the complete

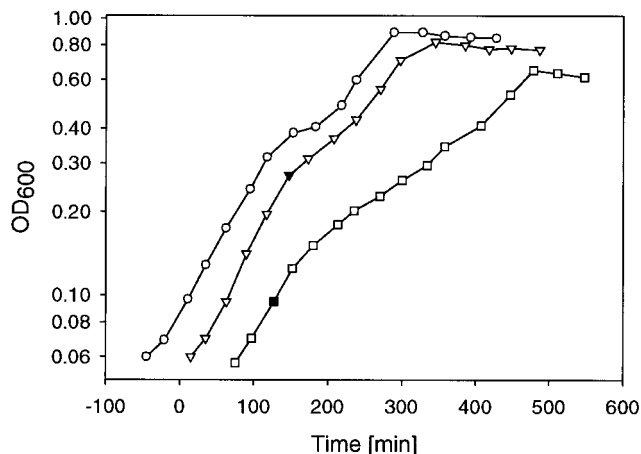


FIG. 5. Influence of cAMP (20 mM) on growth of the *K. pneumoniae* wild type in citrate minimal medium containing 2 mM glucose. The addition of cAMP is indicated by solid symbols. For the sake of better readability, the individual growth curves are displayed with a time difference of 1 h.

consumption of glucose. If cAMP was added at an  $OD_{600}$  of 0.095, the diauxic effect was also abolished, but in addition, the growth rate and the final cell density were significantly reduced. The reason for this inhibition is unknown; it may be caused by an interference of citrate fermentation and glucose fermentation or by other components of the cAMP-CRP regulon.

The cAMP effect and the presence of three putative CRP binding sequences in the *citC-citS* intergenic region (Fig. 1) indicated an involvement of CRP in catabolite repression of the citrate fermentation genes. To demonstrate this, several attempts were made to study the effect of a *crp* deletion on the expression of the citrate fermentation genes. Unfortunately, our efforts to construct a *crp* deletion mutant of the *K. pneumoniae* strain used in this study failed (data not shown). Since we were not able to analyze the role of CRP in the expression of the citrate fermentation genes in vivo, the ability of purified CRP to bind to the potential binding sites in the *citC-citS* promoter region was tested.

**Purification of CRP from *K. pneumoniae*.** The *crp* gene of *K. pneumoniae* ATCC 13882 was amplified by PCR from chromosomal DNA using Vent DNA polymerase. The resulting 655-bp product was cloned into the expression vector pET24b with the restriction sites that had been introduced with the primers. Sequence analysis of two of the resulting pET-CRP plasmids revealed two positions that differed from the published sequence of *K. aerogenes crp* (29). These differences did not cause a change at the protein level, however. For CRP overproduction, pET-CRP was transferred into *E. coli* BL21 (DE3), which carries the gene for the T7 RNA polymerase under the control of an IPTG-inducible *lacUV5* promoter. After induction with IPTG, a dominant protein band was observed after SDS-PAGE of whole-cell extracts (Fig. 6). Its apparent size of about 25 kDa corresponded well with the predicted molecular mass of CRP (23.7 kDa). Fractionation of the cells revealed that most of the protein was present in the supernatant obtained after ultracentrifugation of cell extract, indicating that CRP had been obtained in a soluble form.

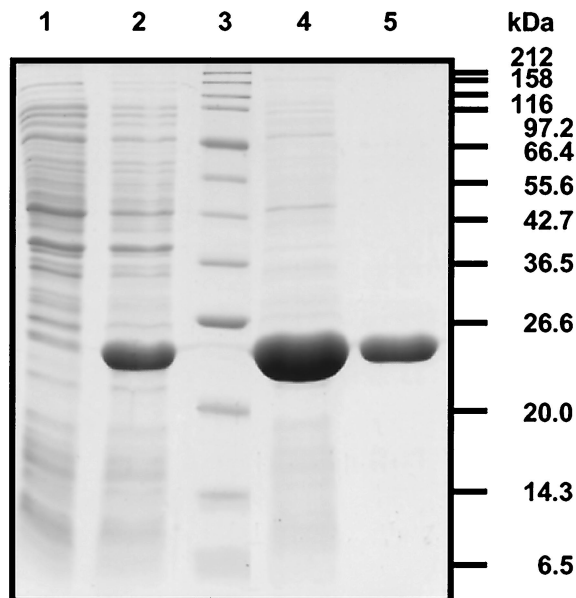


FIG. 6. Coomassie-stained SDS-PAGE gel containing the following samples: whole-cell lysate of *E. coli* BL21(DE3)/pET-CRP prior to (lane 1) and 3 h after (lane 2) IPTG induction, protein standards (lane 3), and purified CRP protein (lanes 4 and 5) after affinity chromatography on cAMP agarose.

Purification of CRP was achieved by affinity chromatography with cAMP agarose as a matrix. The eluted protein was essentially pure as estimated by Coomassie-stained polyacrylamide gels (Fig. 6). It should be mentioned that a very small proportion of the purified protein was probably *E. coli* CRP, which differs, however, from *K. pneumoniae* CRP in only one position (29). The corresponding proteins were shown to be completely interchangeable with respect to activation of the *E. coli lacZ* and the *K. pneumoniae hutU* promoters (30).

**Binding of CRP to the *citC-citS* intergenic region.** Purified CRP was used for gel retardation assays with radioactively labeled 348-bp *MluI-SphI* DNA fragments encompassing the *citC-citS* intergenic region. As shown in Fig. 7, two specific protein-DNA complexes were observed, indicating that CRP

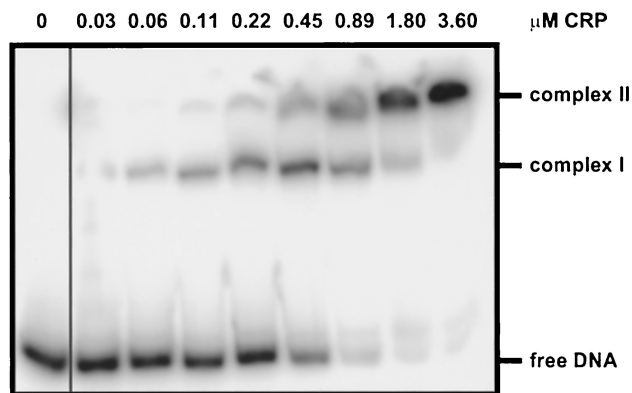


FIG. 7. Gel retardation assay with CRP and the 348-bp *MluI-SphI* DNA fragment covering the intergenic region between *citC* and *citS*. The concentration of CRP is indicated on top of the figure.

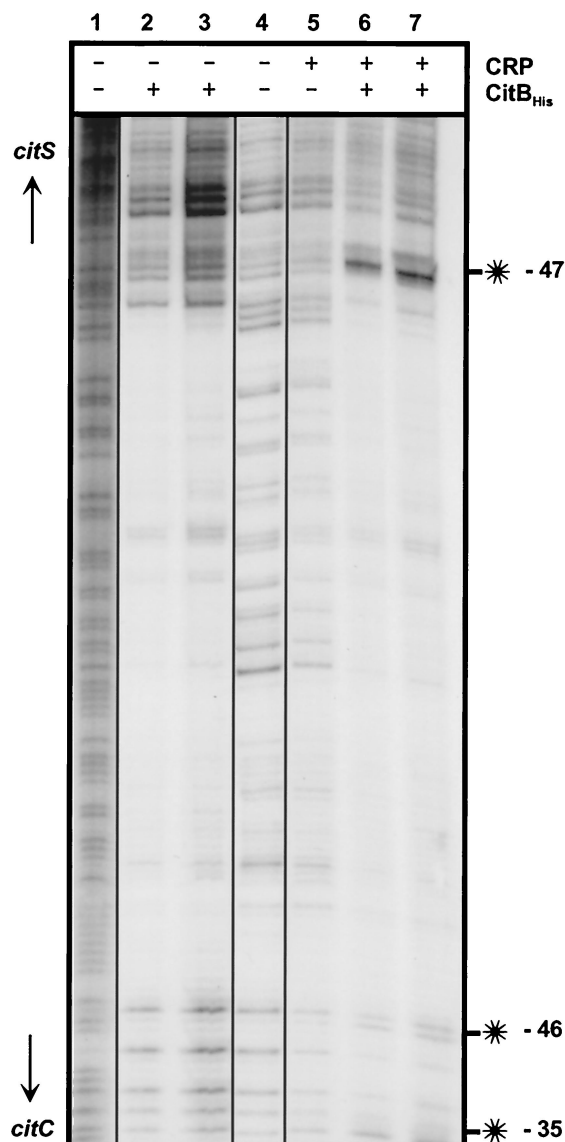


FIG. 8. DNase I footprint assay with CRP and CitB<sub>His</sub>. The 348 bp *Mlu*I-*Sph*I fragment covering the *citC-citS* intergenic region was labeled by fill-in of the 3'-recessed ends created by *Mlu*I with Klenow polymerase. Lane 1, G+A sequencing ladder; lane 2, 0.4  $\mu$ M CitB<sub>His</sub>; lane 3, 1.6  $\mu$ M CitB<sub>His</sub>; lane 4, no protein; lane 5, 3.7  $\mu$ M CRP; lane 6, 2.0  $\mu$ M CRP plus 0.4  $\mu$ M CitB<sub>His</sub>; lane 7, 2.0  $\mu$ M CRP plus 1.6  $\mu$ M CitB<sub>His</sub>. The hypersensitive sites (indicated with asterisks) are located at positions -47 relative to the *citS* transcription start site (top) and at -35 and -46 relative to the *citC* transcription start site (bottom).

was bound to two of three putative binding sites present on this fragment. Half-maximal binding required about 0.5  $\mu$ M CRP. To define the CRP binding sites more exactly, DNase I footprint experiments were performed with the same DNA fragment used in the gel retardation assay. With CRP concentrations up to 3.7  $\mu$ M, hardly visible hypersensitive sites were present at positions -35 and -46 upstream of the *citC* transcription start site (Fig. 8, lane 5). When the DNase I footprint experiment was performed with 2.0  $\mu$ M CRP in the presence of either 0.4  $\mu$ M CitB<sub>His</sub> or 1.6  $\mu$ M CitB<sub>His</sub> (Fig. 8, lanes 6 and 7), the hypersensitive sites at positions -35 and -46 upstream

of the *citC* transcription start site were easily visible; in addition, a strong hypersensitive site at position -47 upstream of the *citS* transcription start site appeared. Since none of the hypersensitive sites was observed in DNase I footprints obtained with CitB<sub>His</sub> alone (Fig. 8, lanes 2 and 3), they must be caused by the presence of CRP.

The location of the hypersensitive sites strongly indicated that CRP binds to the two postulated sites centered at -41.5 upstream of the *citC* and *citS* transcription start sites, but not to the one in between. This is in accord with the result of the gel retardation assay, which indicated two CRP binding sites to be present in the *citC-citS* intergenic region, and with the fact that the putative CRP binding site, which is not occupied, strongly overlaps with the CitB binding site (Fig. 1). The influence of CitB<sub>His</sub> on the appearance of the hypersensitive sites indicated that CRP binding is stimulated by CitB<sub>His</sub>, in particular to the site in front of the *citS* promoter.

## DISCUSSION

Catabolite repression has been studied extensively in enterobacteria, in particular in *E. coli*, during the last decades. Nearly all studies have focused exclusively on catabolite repression during aerobic growth. The results reported in this study provide an example of catabolite repression under anaerobic, fermentative conditions. Three different carbon sources, i.e., glucose, gluconate, and glycerol, taken up by fundamentally different transport systems and metabolized by different pathways, were shown to inhibit the expression of the citrate fermentation genes. The strongest repression was exerted by glucose and resulted in typical diauxic growth curves (Fig. 2A). The repression by gluconate was weaker, but still led to diauxie (Fig. 2B). The repressing effect of glycerol was in the same range as that of gluconate, but in this case, no diauxie was observed (Fig. 2C). In enterobacteria, catabolite repression is prevalently exerted by the cAMP-CRP complex and we provide evidence that this holds true also for the citrate fermentation genes in *K. pneumoniae*. First, the diauxic effect caused by glucose could be impaired by addition of cAMP; second, CRP was shown to bind to two sites in the *citC-citS* intergenic region, which are centered at -41.5 upstream of the *citC* and the *citS* transcription start sites. This position was previously demonstrated to be one of the optimal sites for transcriptional activation by the cAMP-CRP complex (15). Interestingly, the binding of the cAMP-CRP complex was easily observed in a gel retardation assay, whereas the emergence of hypersensitive sites in DNase I footprints was extremely weak with the cAMP-CRP complex alone but strongly supported by the simultaneous presence of the response regulator CitB. The latter observation indicated that binding of the cAMP-CRP complex to the *citC-citS* intergenic region is stimulated by the previous binding of phosphorylated CitB (24). Since the expression of the citrate fermentation genes was only partially inhibited by the alternative carbon sources (Fig. 4), it seems possible that the cAMP-CRP complex serves to enhance a basal, CitB-dependent transcription level in the absence of repressing carbon sources. Since the *citAB* genes are positively autoregulated by cotranscription with *citS* and *oadGAB* (6), a reduced transcription of the *citS* operon due to a low cAMP-CRP concentration would result in lowered levels not only of the dissimilatory

proteins (CitS and oxaloacetate decarboxylase) but also of the regulatory proteins CitA and CitB. As a consequence, transcription of the citrate fermentation genes will decrease even further.

The mechanism described above implies that the repressing carbon sources reduce the cAMP-CRP concentration. It was recently shown that not only glucose and other PTS sugars, but also non-PTS substrates such as lactose or gluconate, in fact lead to lower levels of both cAMP and CRP (17). In the case of cAMP, it is believed that enzyme IIA<sup>Glc</sup>, a protein of the PTS and a key player in catabolite repression of enterobacteria (33), activates adenylate cyclase, the cAMP biosynthetic enzyme, when it is present in the phosphorylated state. PTS substrates cause dephosphorylation of enzyme IIA<sup>Glc</sup> mainly by phosphoryl transfer to the sugars, whereas non-PTS sugars can elicit dephosphorylation of IIA<sup>Glc</sup> by a reduction of the PEP/pyruvate ratio (16). For gluconate, however, it was shown that despite a lowered PEP/pyruvate ratio, enzyme IIA<sup>Glc</sup> was predominantly in the phosphorylated state (16). Therefore, another mechanism seems to be effective for the gluconate-induced reduction of the cAMP level. The lowering of the CRP concentration in the presence of repressing carbon sources seems to be due to complex autoregulation of the *crp* gene (18, 19, 40).

Based on the findings described above, a reduced concentration of the cAMP-CRP complex is also postulated to be the cause of catabolite repression by glucose, gluconate, and glycerol during citrate fermentation in *K. pneumoniae*. However, further experiments are required to prove this hypothesis, such as measurements of the concentrations of cAMP, CRP, PEP, and pyruvate and of the phosphorylation state of enzyme IIA<sup>Glc</sup> under the fermentative conditions used in our studies. As the fermentation of glucose, gluconate, and glycerol involves the formation of pyruvate from PEP, it seems likely that these carbon sources lead to a different PEP/pyruvate ratio than fermentation of citrate, where pyruvate is formed from oxaloacetate and PEP required for biosynthetic purposes has to be generated from pyruvate by PEP synthetase. Irrespective of the outcome of such studies, the data provided here and by others (8, 35) show that the sophisticated mechanism of CRP-mediated catabolite repression in enterobacteria works not only under aerobic but also under anaerobic, fermentative conditions.

#### ACKNOWLEDGMENT

This work was supported by a grant from the Swiss National Foundation for Scientific Research to M.B.

#### REFERENCES

- Bender, R. A. 1996. Variations on a theme by *Escherichia*, p. 4–9. In F. C. Neidhardt, R. Curtiss III, J. L. Ingraham, E. C. C. Lin, K. B. Low, B. Magasanik, W. S. Reznikoff, M. Riley, M. Schaechter, and H. E. Umbarger (ed.), *Escherichia coli* and *Salmonella*: cellular and molecular biology, 2nd ed., vol. 1. ASM Press, Washington, D.C.
- Berg, O. G., and P. H. von Hippel. 1988. Selection of DNA binding sites by regulatory proteins. II. The binding specificity of cyclic AMP receptor protein to recognition sites. *J. Mol. Biol.* **200**:709–723.
- Botsford, J. L., and J. G. Harman. 1992. Cyclic AMP in prokaryotes. *Microbiol. Rev.* **56**:100–122.
- Bott, M. 1997. Anaerobic citrate metabolism and its regulation in enterobacteria. *Arch. Microbiol.* **167**:78–88.
- Bott, M., and P. Dimroth. 1994. *Klebsiella pneumoniae* genes for citrate lyase and citrate lyase ligase: localization, sequencing, and expression. *Mol. Microbiol.* **14**:347–356.
- Bott, M., M. Meyer, and P. Dimroth. 1995. Regulation of anaerobic citrate metabolism in *Klebsiella pneumoniae*. *Mol. Microbiol.* **18**:533–546.
- Brewer, C. R., and C. H. Werkman. 1939. The anaerobic dissimilation of citric acid by *Aerobacter aerogenes*. *Enzymologia* **6**:273–281.
- Buchet, A., W. Nasser, K. Eichler, and M. Mandrand-Berthelot. 1999. Positive co-regulation of the *Escherichia coli* carnitine pathway *cai* and *fix* operons by CRP and the *CaiF* activator. *Mol. Microbiol.* **34**:562–575.
- Busby, S., and R. H. Ebright. 1999. Transcription activation by catabolite activator protein (CAP). *J. Mol. Biol.* **293**:199–213.
- Dagley, S., and E. A. Dawes. 1953. Citric acid metabolism of *Aerobacter aerogenes*. *J. Bacteriol.* **66**:259–265.
- Daniel, R., T. A. Bobik, and G. Gottschalk. 1998. Biochemistry of coenzyme B<sub>12</sub>-dependent glycerol and diol dehydratases and organization of the encoding genes. *FEMS Microbiol. Rev.* **22**:553–566.
- Dimroth, P. 1997. Primary sodium ion translocating enzymes. *Biochim. Biophys. Acta* **1318**:11–51.
- Dimroth, P. 1987. Sodium ion transport decarboxylases and other aspects of sodium ion cycling in bacteria. *Microbiol. Rev.* **51**:320–340.
- Forage, R. G., and M. A. Foster. 1982. Glycerol fermentation in *Klebsiella pneumoniae*: functions of the coenzyme B<sub>12</sub>-dependent glycerol and diol dehydratases. *J. Bacteriol.* **149**:413–419.
- Gaston, K., A. Bell, A. Kolb, H. Buc, and S. Busby. 1990. Stringent spacing requirements for transcription activation by CRP. *Cell* **62**:733–743.
- Hogema, B. M., J. C. Arents, R. Bader, K. Eijkemans, H. Yoshida, H. Takahashi, H. Aiba, and P. W. Postma. 1998. Inducer exclusion in *Escherichia coli* by non-PTS substrates: the role of the PEP to pyruvate ratio in determining the phosphorylation state of enzyme IIA<sup>Glc</sup>. *Mol. Microbiol.* **30**:487–498.
- Hogema, B. M., J. C. Arents, T. Inada, H. Aiba, K. van Dam, and P. W. Postma. 1997. Catabolite repression by glucose 6-phosphate, gluconate and lactose in *Escherichia coli*. *Mol. Microbiol.* **24**:857–867.
- Ishizuka, H., A. Hanamura, T. Inada, and H. Aiba. 1994. Mechanism of the down-regulation of cAMP receptor protein by glucose in *Escherichia coli*: role of autoregulation of the *crp* gene. *EMBO J.* **13**:3077–3082.
- Ishizuka, H., A. Hanamura, T. Kunimura, and H. Aiba. 1993. A lowered concentration of cAMP receptor protein caused by glucose is an important determinant for catabolite repression in *Escherichia coli*. *Mol. Microbiol.* **10**:341–350.
- Izu, H., T. Kawai, Y. Yamada, H. Aoshima, O. Adachi, and M. Yamada. 1997. Characterization of the *gntT* gene encoding a high-affinity gluconate permease in *Escherichia coli*. *Gene* **199**:203–210.
- Johnson, E. A., S. K. Burke, R. G. Forage, and E. C. C. Lin. 1984. Purification and properties of dihydroxyacetone kinase from *Klebsiella pneumoniae*. *J. Bacteriol.* **160**:55–60.
- Johnson, E. A., R. L. Levine, and E. C. C. Lin. 1985. Inactivation of glycerol dehydrogenase of *Klebsiella pneumoniae* and the role of divalent cations. *J. Bacteriol.* **164**:479–483.
- Kaspar, S., R. Perozzo, S. Reinelt, M. Meyer, K. Pfister, L. Scapozza, and M. Bott. 1999. The periplasmic domain of the histidine autokinase CitA functions as a highly specific citrate receptor. *Mol. Microbiol.* **33**:858–872.
- Meyer, M., P. Dimroth, and M. Bott. 1997. *In vitro* binding of the response regulator CitB and of its carboxy-terminal domain to A + T-rich DNA target sequences in the control region of the divergent *citC* and *citS* operons of *Klebsiella pneumoniae*. *J. Mol. Biol.* **269**:719–731.
- Miller, J. H. 1972. Experiments in molecular genetics. Cold Spring Harbor Laboratory Press, Cold Spring Harbor, N.Y.
- Nelson, S. O., J. K. Wright, and P. W. Postma. 1983. The mechanism of inducer exclusion: direct interaction between purified III<sup>Glc</sup> of the phosphoenolpyruvate:sugar phosphotransferase system and the lactose carrier of *Escherichia coli*. *EMBO J.* **2**:715–720.
- Novotny, M. J., W. L. Frederickson, E. B. Waygood, M. H. Saier, Jr. 1985. Allosteric deregulation of glycerol kinase by enzyme III<sub>glc</sub> of the phosphotransferase system in *Escherichia coli* and *Salmonella typhimurium*. *J. Bacteriol.* **162**:810–816.
- Osumi, T., and M. H. Saier. 1982. Regulation of lactose permease activity by the phosphoenolpyruvate:sugar phosphotransferase system: evidence for direct binding of the glucose-specific enzyme III to the lactose permease. *Proc. Natl. Acad. Sci. USA* **79**:1457–1461.
- Osuna, R., and R. A. Bender. 1991. *Klebsiella aerogenes* catabolite gene activator protein and the gene encoding it. *J. Bacteriol.* **173**:6626–6631.
- Osuna, R., S. A. Boylan, and R. A. Bender. 1991. *In vitro* transcription of the histidine utilization (*hutUH*) operon from *Klebsiella aerogenes*. *J. Bacteriol.* **173**:116–123.
- Porco, A., N. Peekhaus, C. Bausch, S. Tong, T. Isturiz, and T. Conway. 1997. Molecular genetic characterization of the *Escherichia coli gntT* gene of GntI, the main system for gluconate metabolism. *J. Bacteriol.* **179**:1584–1590.
- Pos, K. M., and P. Dimroth. 1996. Functional properties of the purified Na<sup>+</sup>-dependent citrate carrier of *Klebsiella pneumoniae*: evidence for asymmetric orientation of the carrier protein in proteoliposomes. *Biochemistry* **35**:1018–1026.
- Postma, P. W., J. W. Lengeler, and G. R. Jacobson. 1993. Phosphoenolpyru-



- vate:carbohydrate phosphotransferase systems of bacteria. *Microbiol. Rev.* **57**:543–594.
34. **Sambrook, J., E. F. Fritsch, and T. Maniatis.** 1989. *Molecular cloning: a laboratory manual*, 2nd ed. Cold Spring Harbor Laboratory Press, Cold Spring Harbor, N.Y.
  35. **Sawers, G.** 2001. A novel mechanism controls anaerobic and catabolite regulation of the *Escherichia coli* *tdc* operon. *Mol. Microbiol.* **39**:1285–1298.
  36. **Schneider, K., P. Dimroth, and M. Bott.** 2000. Biosynthesis of the prosthetic group of citrate lyase. *Biochemistry* **39**:9438–9450.
  37. **Schneider, K., P. Dimroth, and M. Bott.** 2000. Identification of triphosphoribosyl-dephospho-CoA as precursor of the citrate lyase prosthetic group. *FEBS Lett.* **483**:165–168.
  38. **Steuber, J., W. Krebs, M. Bott, and P. Dimroth.** 1999. A membrane-bound NAD(P)<sup>+</sup>-reducing hydrogenase provides reduced pyridine nucleotides during citrate fermentation by *Klebsiella pneumoniae*. *J. Bacteriol.* **181**:241–245.
  39. **Studier, F. W., and B. A. Moffatt.** 1986. Use of T7 RNA polymerase to direct selective high-level expression of cloned genes. *J. Mol. Biol.* **189**:113–130.
  40. **Tagami, H., T. Inada, T. Kunimura, and H. Aiba.** 1995. Glucose lowers CRP\* levels resulting in repression of the *lac* operon in cells lacking cAMP. *Mol. Microbiol.* **17**:251–258.
  41. **Tobimatsu, T., M. Azuma, S. Hayashi, K. Nishimoto, and T. Toraya.** 1998. Molecular cloning, sequencing and characterization of the genes for adenosylcobalamin-dependent diol dehydratase of *Klebsiella pneumoniae*. *Biosci. Biotechnol. Biochem.* **62**:1774–1777.
  42. **Tobimatsu, T., M. Azuma, H. Matsubara, H. Takatori, T. Niida, K. Nishimoto, H. Satoh, R. Hayashi, and T. Toraya.** 1996. Cloning, sequencing, and high level expression of the genes encoding adenosylcobalamin-dependent glycerol dehydrase of *Klebsiella pneumoniae*. *J. Biol. Chem.* **271**:22352–22357.
  43. **Tong, I. T., H. H. Liao, and D. C. Cameron.** 1991. 1,3-Propanediol production by *Escherichia coli* expressing genes from the *Klebsiella pneumoniae* *dha* regulon. *Appl. Environ. Microbiol.* **57**:3541–3546.
  44. **Van der Rest, M. E., R. M. Siewe, T. Abee, E. Schwarz, D. Oosterhelt, and W. N. Konings.** 1992. Nucleotide sequence and functional properties of a sodium-dependent citrate transport system from *Klebsiella pneumoniae*. *J. Biol. Chem.* **267**:8971–8976.
  45. **Wiffling, K., and P. Dimroth.** 1989. Isolation and characterization of oxaloacetate decarboxylase of *Salmonella typhimurium*, a sodium ion pump. *Arch. Microbiol.* **152**:584–588.
  46. **Willard, B. L.** 1994. Ph.D. thesis. University of Wisconsin—Madison, Madison.
  47. **Zhang, X., A. Gunasekera, Y. W. Ebricht, and R. H. Ebricht.** 1991. Derivatives of CAP having no solvent-accessible cysteine residues, or having a unique solvent-accessible cysteine residue at amino acid 2 of the helix-turn-helix motif. *J. Biomol. Struct. Dyn.* **9**:463–473.