



Since January 2020 Elsevier has created a COVID-19 resource centre with free information in English and Mandarin on the novel coronavirus COVID-19. The COVID-19 resource centre is hosted on Elsevier Connect, the company's public news and information website.

Elsevier hereby grants permission to make all its COVID-19-related research that is available on the COVID-19 resource centre - including this research content - immediately available in PubMed Central and other publicly funded repositories, such as the WHO COVID database with rights for unrestricted research re-use and analyses in any form or by any means with acknowledgement of the original source. These permissions are granted for free by Elsevier for as long as the COVID-19 resource centre remains active.



## Original research

# Low prevalence of cardiac abnormalities in competitive athletes at return-to-play after COVID-19<sup>☆,☆☆</sup>



Viviana Maestrini<sup>a,b,\*</sup>, Marco Penza<sup>a,c</sup>, Domenico Filomena<sup>a,b</sup>, Lucia Ilaria Birtolo<sup>a,b</sup>, Sara Monosilio<sup>a,b</sup>, Erika Lemme<sup>a</sup>, Maria Rosaria Squeo<sup>a</sup>, Ruggiero Mango<sup>a</sup>, Giuseppe Di Gioia<sup>a</sup>, Andrea Serdoz<sup>a</sup>, Roberto Fiore<sup>a</sup>, Francesco Fedele<sup>a,b</sup>, Antonio Pelliccia<sup>a</sup>, Barbara Di Giacinto<sup>a</sup>

<sup>a</sup> Institute of Sport Medicine, Sport and Health, National Italian Olympic Committee, Italy

<sup>b</sup> Department of Clinical, Internal, Anesthesiological and Cardiovascular Sciences, Sapienza University of Rome, Italy

<sup>c</sup> Department of Medical Biotechnology and Translational Medicine, University of Milan, Italy

## ARTICLE INFO

## Article history:

Received 8 May 2022

Received in revised form 28 October 2022

Accepted 30 October 2022

Available online 1 November 2022

## Keywords:

COVID-19

SARS-CoV-2

Athletes

Cardiovascular evaluation

Cardiopulmonary exercise test (CPET)

Return-to-play (RTP)

## ABSTRACT

**Objective:** to evaluate the prevalence of cardiac involvement after COVID-19 in competitive athletes at return-to-play (RTP) evaluation, following the recommended Italian protocol including cardiopulmonary exercise test (CPET) and 24-Hour Holter monitoring.

**Design and methods:** this is a single centre observational, cross-sectional study. Since October 2020, all competitive athletes (age  $\geq 14$  years) evaluated in our Institute after COVID-19, prior RTP were enrolled. The protocol dictated by the Italian governing bodies included: 12-lead ECG, blood test, CPET, 24-h ECG monitoring, spirometry. Cardiovascular Magnetic Resonance (CMR) was performed based on clinical indication.

**Results:** 219 consecutive athletes were examined (59% male), age 23 years (IQR 19–27), 21% asymptomatic, 77% mildly symptomatic, 2% with previous pneumonia. The evaluation was performed after a median of 10 (6–17) days from negative SARS-CoV-2 swab.

All athletes showed a good exercise capacity at CPET without cardiovascular and respiratory limitations. Uncommon premature ventricular contractions (PVCs) were found in 9.5% ( $n = 21$ ) at CPET/Holter ECG monitoring. Two athletes (0.9%) were diagnosed with acute myocarditis (by CMR) and another one with new pericardial effusion. All the three athletes were temporally restricted from sport participation.

**Conclusions:** Myocarditis in competitive athletes screened after COVID-19 resolution was detected in a low minority of the cases (0.9%). However, a non-negligible prevalence of uncommon PVCs (9%) was observed, either at CPET and/or Holter ECG monitoring, including all athletes with COVID-19 related cardiovascular abnormalities.

© 2022 Sports Medicine Australia. Published by Elsevier Ltd. All rights reserved.

## Practical implications

- All athletes had good performance at cardiopulmonary exercise test after COVID-19
- The prevalence of myocarditis in athletes after COVID-19 is remarkably low.

☆ Disclosure: All the authors have nothing to disclose.

☆☆ Author contribution statement: Viviana Maestrini: Conceptualization, Methodology, Investigation; Writing- Original draft; Marco Penza: Data Curation, Investigation; Domenico Filomena: Formal analysis, Investigation, Writing - Original Draft; Lucia Ilaria Birtolo: Investigation; Sara Monosilio: Investigation; Erika Lemme: Investigation; Maria Rosaria Squeo: Investigation; Ruggiero Mango: Investigation; Giuseppe Di Gioia: Investigation; Andrea Serdoz: Investigation; Roberto Fiore: Investigation; Francesco Fedele: Investigation; Antonio Pelliccia: Investigation, Writing - Review & Editing, Supervision; Barbara Di Giacinto: Investigation, Writing - Review & Editing, Supervision.

\* Corresponding author at: Institute of Sport Medicine, Sport and Health, National Italian Olympic Committee, Italy

E-mail address: [viviana.maestrini@uniroma1.it](mailto:viviana.maestrini@uniroma1.it) (V. Maestrini).

- The prevalence of uncommon premature ventricular beats detected by cardiopulmonary exercise test/ECG Holter after COVID-19 is not negligible.
- Cardiopulmonary exercise test had additional value in the return-to-play evaluation

## 1. Introduction

Cardiovascular diseases can occur during hospitalized COVID-19 patients, comprising a wide spectrum of disorders including myocarditis, pericarditis, pulmonary embolism, myocardial infarction, Takotsubo cardiomyopathy and, rarely, multisystemic inflammatory syndrome in pediatric population.<sup>1,2</sup> The reports of myocarditis and pericarditis occurring in asymptomatic or mildly symptomatic young patients generated large clinical concern regarding the risk of resuming sport activity

after the infection. Several screening strategies for a safe return-to-play (RTP) of competitive athletes have been proposed, mainly based on experts' opinion.<sup>3–7</sup> Data accumulated so far, derived from cross-sectional studies, rely usually on the approach based on symptoms, Troponin test, 12-lead electrocardiogram and echocardiogram.<sup>8–13</sup> Strategies integrating exercise stress test and/or Holter ECG in the RTP were less investigated, although ideally relevant also to confirm the normal cardiac response to effort in the healed athletes.

Thus, the aim of this study was to evaluate the results of the comprehensive screening program of competitive athletes at RTP, based on the recommended Italian protocol which included cardiopulmonary exercise test (CPET) and Holter ECG monitoring.<sup>6</sup>

## 2. Methods

All competitive athletes who were evaluated at the Institute of Sport Medicine between October 2020 and May 2021 after COVID-19, prior resuming their training, were consecutively enrolled. Diagnosis of COVID-19 was made by a positive oro-naso-pharyngeal throat swab for SARS-CoV-2 by reverse-transcriptase-polymerase chain reaction. All athletes were unvaccinated at that time of COVID-19 infection. The cardiovascular (CV) evaluation of RTP was performed within 30 days from first negative swab in agreement with the Italian Ministerial Decree.<sup>6</sup> The protocol included blood tests, pulmonary function tests (PFTs), 12-lead resting electrocardiogram (ECG), Transthoracic Echocardiogram (TTE), Cardiopulmonary exercise test (CPET) independently by the severity of the disease. Data regarding the presence of infection-related symptoms, any prescribed medication and the time from the first negative swabs to the RTP evaluation were recorded. COVID-19 severity course was graded.<sup>14</sup>

Blood tests comprised: full blood count, alanine (ALT) and aspartate (AST) aminotransferase, gamma-glutamyl transferase (GGT), creatinine, creatinine phosphokinase (CPK), high-sensitivity Troponin (hs-Trop), lactic acid dehydrogenase (LDH), prothrombin time (PT), partial thromboplastin time (PTT), international normalized ratio (INR), protein electrophoresis, D-dimer. PFTs evaluated Forced Vital Capacity (FVC), Forced Expiratory Volume in one second (FEV1) and the FEV1/FVC ratio. All parameters were measured, expressed as percent of the predicted, and compared with values derived from normal subjects of the same age, gender, height, weight and ethnicity. ECG was recorded with the subject in supine position during quiet respiration, at 25 mm/s, using a Cardioline ClickECG (Cardioline, Italy). ECG patterns were analyzed according to the international criteria.<sup>15</sup> In case of abnormalities, ECGs post-COVID-19 were compared to the ones previously recorded. TTE was performed using a Philips Epiq7 (Philips Medical Systems, Andover, Massachusetts) equipped with an S3 probe (2 to 4 MHz). Left (LV) and right ventricle (RV) dimension, wall thickness, global and regional systolic function, and indexes of diastolic function were evaluated. The presence of pericardial effusion was evaluated. Imaging interpretation was based on the international recommendation.<sup>16,17</sup> CPET was a maximal, symptom-limited continuous ramp CPET, using a cycle ergometer (MORTARA) connected with Quark CPET (COSMED). A COSMED V2 silicon Oro-Nasal Mask was worn by each athlete during testing. Each test included the recording of cardiac and ventilator parameters for about 1 min at rest; subsequently the ramp protocol was started until the exhaustion and followed by five minutes of recovery. The following parameters were collected: resting heart rate (HR rest), resting Systolic and Diastolic Blood Pressure (SBP and DBP rest), Maximal Heart Rate (HR max), Maximal Systolic and Diastolic Blood Pressure (SBP and DBP max), Maximal workload (Watt/Kg max), Maximal Ventilation (VE max), Maximal Oxygen Uptake (VO2 max), Ventilator Efficiency Slope (VE/VCO2 slope), Oxygen Pulse (VO2/HR) and Peak Respiratory Exchange Ratio (RER max). The peak VO2 was the highest VO2 during a 10-s interval obtained at the end of exercise. The Lactate Threshold (LT) was determined using both the V-slope and the ventilatory equivalent for O2 graphs. Oxygen saturation measures were collected

with a digital pulse oximeter (KAARSEN) at rest, at maximum physical effort and at the end of the recovery phase. Any supraventricular and/or ventricular arrhythmias, ST/T changes and symptoms during the exercise were recorded. All athletes underwent 24-h Holter ECG monitoring (12-leads). Any supraventricular and ventricular arrhythmias were investigated. The burden of premature ventricular contractions (PVCs) was arbitrarily classified as <50, 50–500, >500 PVCs/24 h. Ventricular arrhythmias were classified as common or uncommon, as previously defined.<sup>18</sup> Newly diagnosed PVCs were those detected for the first time after COVID-19 and not observed in previous evaluations. CMR was performed upon clinical indication. CMR protocol included LV and RV volumes and ejection fraction assessment and tissue characterization by late gadolinium enhancement and parametric techniques (T1 and T2 Mapping).<sup>19,20</sup> The diagnosis of myocarditis by CMR was made in accordance with expert recommendations of CMR in non-ischemic myocardial inflammation in case of both positive T1 and T2 criteria.<sup>21</sup>

The study design of the present investigation was evaluated and approved by the Review Board of the Institute. All athletes included in this study were fully informed of the collection of the clinical data and signed the consent form, pursuant to Italian law and the Institute policy.

All clinical data assembled from the study population are maintained in an institutional database.

Continuous variables were presented as mean  $\pm$  standard deviation (SD) if normally distributed or median and 25th–75th percentiles if not. Normality distribution was assessed using the Kolmogorov-Smirnov and Shapiro-Wilk tests. Discrete variables were expressed as count (n) and percentages (%). Statistical analysis was performed using SPSS (IBM SPSS Statistics for Windows, Version 21.0.V.20).

## 3. Results

Two-hundred nineteen athletes were enrolled in the RTP program (Table 1). Mean age was 23 (25th–75th percentile 19–27, range 14–58) years, 129 (59%) were male. Athletes were engaged in different disciplines: mixed 84 (39%), power 73 (33%), endurance 57 (26%) and skill 5 (2%). Seventy-nine (36%) were Olympic athletes, while the other 64% were national or regional-level athletes. Almost half of the cohort (n = 105, 48%) had been previously evaluated at our Institute, as part of the annual screening program, before the post COVID-19 re-evaluation.

The time between the first negative NPS and the RTP evaluation was 10 (6–17) days. Most of the athletes during COVID-19 were only mildly symptomatic (77%), and 21% were completely asymptomatic (Table 1).

**Table 1**  
Study population and clinical presentation of SARS-CoV-2 infection.

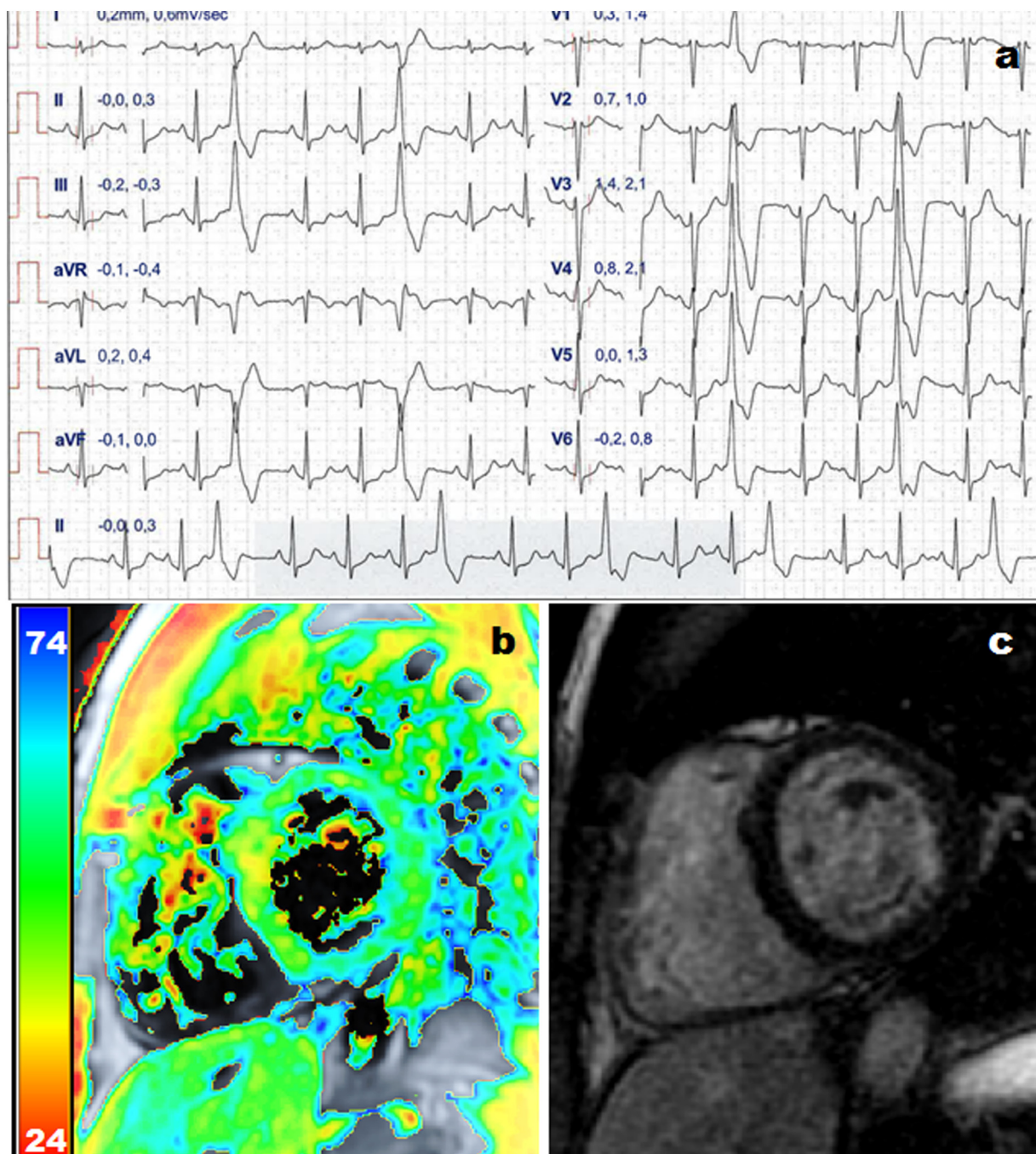
Parameter	Athletes (n = 219)
Age, y.o.	23 (19–27) <sup>a</sup>
Male sex, n (%)	129 (59)
Caucasian, n (%)	212 (97)
Afro-Caribbean, n (%)	7 (3)
Weight, kg	72 (61–85) <sup>a</sup>
Height, cm	177 $\pm$ 13
BSA, m <sup>2</sup>	1.9 (1.7–2.1) <sup>a</sup>
BMI, kg/m <sup>2</sup>	23 (21.5–25) <sup>a</sup>
Mild Symptoms during COVID-19, n (%)	170 (77)
Ageusia/anosmia, n (%)	92 (42)
Fever, n (%)	97 (44)
Dyspnoea, n (%)	18 (8)
Diarrhoea, n (%)	15 (7)
Chest pain, n (%)	0 (0)
Faintness, n (%)	84 (38)
Headache, n (%)	32 (15)
Cough, n (%)	29 (13)
Cold, n (%)	49 (22)
Palpitations, n (%)	2 (1)

BMI: body mass index; BSA: body surface area; DBP: diastolic blood pressure; HR: heart rate; SBP: systolic blood pressure.

<sup>a</sup> Median (IQR).







**Fig. 2.** Example of an athlete presented with uncommon ventricular arrhythmias ultimately diagnosed with myocarditis based on troponin raise and increased T1 and T2 mapping values by cardiac magnetic resonance. Panel A shows ECG during cardiopulmonary exercise test showing premature ventricular contractions with right ventricle bundle branch block morphology, inferior axis. Panel B shows increased T2 mapping values at the mid infero-septum. Panel C shows no late gadolinium enhancement.

only a small minority (2%) of athletes were temporally considered restricted from sport after COVID-19 and entered a close follow-up (only 0.9% were diagnosed with acute myocarditis).

These results are in line with those reporting a low prevalence of myocarditis after the SARS-CoV-2 infection. The very first study on the RTP evaluation of asymptomatic or mildly symptomatic athletes reported higher prevalence of myocarditis (15%).<sup>8</sup> However, this observation was limited to 26 collegiate athletes and such large prevalence was not later confirmed. Subsequent studies described a prevalence of detected myocarditis from 0 to 3%.<sup>9,11–13,22</sup> These large differences with regard to prevalence of myocarditis after COVID-19 are mainly related to the applied diagnostic algorithms. Recently, the widest study published so far, including 1597 athletes, reported a prevalence of

myocarditis from 0.31% to 2.3% according to the adopted screening strategy.<sup>10</sup> Specifically, the lowest prevalence was reported using a symptom based-diagnostic strategy, while the prevalence increased up to 1.1% adding resting ECG, Troponin and echocardiogram. Finally, using CMR in all as a screening tool, the prevalence of myocarditis increased up to 2.3%. Despite performing CMR routinely could increase the detection of myocarditis, the cost-effectiveness, and the clinical meaning of isolated positive CMR findings in otherwise asymptomatic subjects remain to be defined and the impact on the subsequent athlete's management questionable.<sup>23</sup>

In addition, all data reported so far are based on the so called "cardiac triad" (ECG, troponin, echocardiography) while data coming from different strategies and specifically from exercise test are scarce. Only

few studies included the exercise stress in the RTP evaluation.<sup>24–26</sup> Those studies demonstrated a normal exercise capacity and the absence or low prevalence of ventricle arrhythmias. However, in these studies no data on pre-COVID cardiovascular evaluation were available and the number of subjects recruited was low. More recently, a report from the Italian Federation of Sport Medicine collecting data on more than 4100 athletes reported a 2.4% of ventricular arrhythmias by exercise test or 24 h ECG monitoring and myocarditis diagnosed in 0.12%.<sup>27</sup>

In the present study, CPET and 24-h ECG monitoring were performed in addition to ECG, echocardiography, and lab tests, according to the protocol dictated by the Italian governing bodies after the first wave of the pandemic. This protocol was mandatory in every athletes regardless the severity of SARS-CoV-2. This study was not designed to assess the diagnostic yield of CPET and ECG Holter monitoring in athletes after SARS-CoV-2 infection and we cannot provide this information. However, a non-negligible prevalence of ventricular arrhythmias was documented and most of them were newly diagnosed after COVID-19. Despite arrhythmias are not necessarily expression of underlying structural heart disease, PVCs, especially of uncommon pattern, could be the only sign of otherwise clinically silent cardiac disease. Thus, cardiopulmonary exercise test has an undoubted additional value in the RTP evaluation, because can identify, or raise suspicion, for subjects with COVID-19 related cardiovascular abnormalities in addition to the performance fitness evaluation. As matter of fact, those athletes that were eventually considered at risk and were eventually withdrawn from competitions had evidence of uncommon PVCs at CPET and ECG Holter monitoring. Therefore, exercise test may reasonably be advised in athletes recovering from COVID-19. Despite the number of athletes with a confirmed diagnosis of myocarditis was low, athletes with uncommon PVCs entered in a follow-up program. To be noticed, the protocol was later modified and stratified on disease severity, with accumulating evidence of low prevalence of myocarditis related to COVID-19. Finally, our results confirmed that CMR should be considered at RTP in case of high likelihood of myocarditis (i.e., symptoms, suspicious clinical findings including PVCs of uncommon morphology).

Our investigation has several limitations. Firstly, our study was a single-center cross-sectional study and the evaluation prior the infection was available for only half of the cohort. Secondly, our population was made by young, mostly Caucasian, asymptomatic or mildly symptomatic athletes. Consequently this cohort could not be representative of older subjects or those with more severe COVID-19 course. CMR was not performed in all athletes, possibly preventing the evaluation of the overall prevalence of isolated tissue characterization abnormalities and the real diagnostic yield of its use as a screening tool.

In addition, this study was not designed to evaluate the diagnostic yield of CPET and ECG Holter monitoring. A comparative group was not recruited, thus a defined association between SARS-CoV-2 infection and arrhythmias cannot be proved.

## 5. Conclusion

The prevalence of myocarditis after asymptomatic or mildly symptomatic COVID-19 in the athletic population is remarkably low (0.9%). On the other hand, the prevalence of uncommon premature ventricular beats was not negligible (9%). Uncommon PVC were detected by CPET, and were present in all athletes with COVID-19 related cardiovascular abnormalities.

## Funding information

This research did not receive any specific grant from funding agencies in the public, commercial, or not-for-profit sectors.

## Confirmation of ethical compliance

The study design of the present investigation was evaluated and approved by the Review Board of the Institute. All athletes included in this

study were fully informed of the types and nature of the evaluation and signed the consent form, pursuant to Italian law and the Institute policy. All clinical data assembled from the study population are maintained in an institutional database.

All authors have no conflict of interest to disclose.

## Acknowledgment

All authors would like to acknowledge the technical support of Floriana Filannino and Alessandra Barreca.

## References

1. Alsaied T, Tremoulet AH, Burns JC et al. Review of cardiac involvement in multisystem inflammatory syndrome in children. *Circulation* 2021;143:78–88.
2. Maestrini V, Birtolo LI, Francone M et al. Cardiac involvement in consecutive unselected hospitalized COVID-19 population: in-hospital evaluation and one-year follow-up. *Int J Cardiol* 2021;339:235–242.
3. Bhatia RT, Marwaha S, Malhotra A et al. Exercise in the severe acute respiratory syndrome Coronavirus-2 (SARS-CoV-2) era: a question and answer session with the experts endorsed by the section of sports cardiology & exercise of the European Association of Preventive Cardiology (EAPC). *Eur J Prev Cardiol* 2020;27:1242–1251.
4. Phelan D, Kim JH, Elliott MD et al. Screening of potential cardiac involvement in competitive athletes recovering from COVID-19: an expert consensus statement. *J Am Coll Cardiol Img* 2020;13:2635–2652.
5. Wilson MG, Hull JH, Rogers J et al. Cardiorespiratory considerations for return-to-play in elite athletes after COVID-19 infection: a practical guide for sport and exercise medicine physicians. *Br J Sports Med* 2020;54:1157–1161.
6. [http://www.fmsi.it/images/pdf/archivio\\_news/CS\\_Raccomandazioni\\_FMSI\\_2020.04.04-2.pdf](http://www.fmsi.it/images/pdf/archivio_news/CS_Raccomandazioni_FMSI_2020.04.04-2.pdf). [http://www.fmsi.it/images/pdf/archivio\\_news/CS\\_Raccomandazioni\\_FMSI\\_20200404-2pdf\\_2020](http://www.fmsi.it/images/pdf/archivio_news/CS_Raccomandazioni_FMSI_20200404-2pdf_2020).
7. Gluckman TJAN, Bhave NM et al. ACC expert consensus decision pathway on cardiovascular sequelae of COVID-19 in adults: myocarditis and other myocardial involvement, post-acute sequelae of SARS-CoV-2 infection, and return to play: a report of the American college of cardiology solution set oversight committee. *J Am Coll Cardiol Mar* 2022;16:2022.
8. Rajpal S, Tong MS, Borchers J et al. Cardiovascular magnetic resonance findings in competitive athletes recovering from COVID-19 infection. *JAMA Cardiol* 2021;6:116–118.
9. Clark DE, Parikh A, Dendy JM et al. COVID-19 myocardial pathology evaluation in athletes with cardiac magnetic resonance (COMPETE CMR). *Circulation* 2021;143:609–612.
10. Daniels CJ, Rajpal S, Greenshields JT et al. Prevalence of clinical and subclinical myocarditis in competitive athletes with recent SARS-CoV-2 infection: results from the Big Ten COVID-19 Cardiac Registry. *JAMA Cardiol* 2021;6:1078–1087.
11. Hendrickson BS, Stephens RE, Chang JV et al. Cardiovascular evaluation after COVID-19 in 137 collegiate athletes: results of an algorithm-guided screening. *Circulation* 2021;143:1926–1928.
12. Moulson N, Petek BJ, Drezner JA et al. SARS-CoV-2 cardiac involvement in young competitive athletes. *Circulation* 2021;144:256–266.
13. Starekova J, Bluemke DA, Bradham WS et al. Evaluation for myocarditis in competitive student athletes recovering from coronavirus disease 2019 with cardiac magnetic resonance imaging. *JAMA Cardiol* 2021;6:945–950.
14. Gandhi RT, Lynch JB, Del Rio C. Mild or moderate Covid-19. *N Engl J Med* 2020;383:1757–1766.
15. Sharma S, Drezner JA, Baggish A et al. International recommendations for electrocardiographic interpretation in athletes. *Eur Heart J* 2018;39:1466–1480.
16. Galderisi M, Cosyns B, Edvardsen T et al. Standardization of adult transthoracic echocardiography reporting in agreement with recent chamber quantification, diastolic function, and heart valve disease recommendations: an expert consensus document of the European Association of Cardiovascular Imaging. *Eur Heart J Cardiovasc Imaging* 2017;18:1301–1310.
17. Pelliccia A, Caselli S, Sharma S et al. European Association of Preventive Cardiology (EAPC) and European Association of Cardiovascular Imaging (EACVI) joint position statement: recommendations for the indication and interpretation of cardiovascular imaging in the evaluation of the athlete's heart. *Eur Heart J* 2018;39:1949–1969.
18. Heidebuchel H, Adami PE, Antz M et al. Recommendations for participation in leisure-time physical activity and competitive sports in patients with arrhythmias and potentially arrhythmogenic conditions: part 1: supraventricular arrhythmias. A position statement of the section of sports cardiology and exercise from the European Association of Preventive Cardiology (EAPC) and the European heart rhythm association (EHRA), both associations of the European Society of Cardiology. *Eur J Prev Cardiol* 2021;28:1539–1551.
19. Kelle S, Bucciarelli-Ducci C, Judd RM et al. Society for Cardiovascular Magnetic Resonance (SCMR) recommended CMR protocols for scanning patients with active or convalescent phase COVID-19 infection. *J Cardiovasc Magnet Reson* 2020;22:61.
20. Messroghli DR, Moon JC, Ferreira VM et al. Clinical recommendations for cardiovascular magnetic resonance mapping of T1, T2, T2\* and extracellular volume: a consensus statement by the Society for Cardiovascular Magnetic Resonance (SCMR) endorsed by the European Association for Cardiovascular Imaging (EACVI). *J Cardiovasc Magnet Reson* 2017;19:75.

21. Ferreira VM, Schulz-Menger J, Holmvang G et al. Cardiovascular magnetic resonance in nonischemic myocardial inflammation: expert recommendations. *J Am Coll Cardiol* 2018;72:3158-3176.
22. Martinez MW, Tucker AM, Bloom OJ et al. Prevalence of inflammatory heart disease among professional athletes with prior COVID-19 infection who received systematic return-to-play cardiac screening. *JAMA Cardiol* 2021;6:745-752.
23. Filomena D, Birtolo LI, Penza M et al. The role of cardiovascular magnetic resonance in the screening before the return-to-play of elite athletes after COVID-19: utility or futility? *J Sports Med Phys Fitness* 2021;61:1137-1143.
24. Gervasi SF, Pengue L, Damato L et al. Is extensive cardiopulmonary screening useful in athletes with previous asymptomatic or mild SARS-CoV-2 infection? *Br J Sports Med* 2021;55:54-61.
25. Cavigli L, Frascaro F, Turchini F et al. A prospective study on the consequences of SARS-CoV-2 infection on the heart of young adult competitive athletes: implications for a safe return-to-play. *Int J Cardiol* 2021;336:130-136.
26. Komici K, Bianco A, Perrotta F et al. Clinical characteristics, exercise capacity and pulmonary function in post-COVID-19 competitive athletes. *J Clin Med* 2021:10.
27. Casasco M, Iellamo F, Scorcu M et al. Return to play after SARS-CoV-2 infection in competitive athletes of distinct sport disciplines in Italy: a FMSI (Italian Federation of Sports Medicine). *Study J Cardiovasc Develop Dis* 2022:9.