



Elsevier has created a [Monkeypox Information Center](#) in response to the declared public health emergency of international concern, with free information in English on the monkeypox virus. The Monkeypox Information Center is hosted on Elsevier Connect, the company's public news and information website.

Elsevier hereby grants permission to make all its monkeypox related research that is available on the Monkeypox Information Center - including this research content - immediately available in publicly funded repositories, with rights for unrestricted research re-use and analyses in any form or by any means with acknowledgement of the original source. These permissions are granted for free by Elsevier for as long as the Monkeypox Information Center remains active.



Enhanced surveillance of monkeypox in Bas-Uélé, Democratic Republic of Congo: the limitations of symptom-based case definitions



Gaspard Mande^a, Innocent Akonda^b, Anja De Weggheleire^c, Isabel Brosius^c, Laurens Liesenborghs^c, Emmanuel Bottieau^c, Noam Ross^d, Guy-Crispin Gembu^e, Robert Colebunders^f, Erik Verheyen^{g,h}, Dauly Ngonda^a, Herwig Leirs^h, Anne Laudisoit^{d,h,*}

^a University of Kisangani, Faculty of Medicine and Pharmacy, BP 2012, Kisangani, Democratic Republic of Congo

^b Ministry of Health, Buta, Democratic Republic of Congo

^c Outbreak research team, Department of Clinical Sciences, Institute of Tropical Medicine, Nationalestraat 155, 2000 Antwerp, Belgium

^d Ecohealth Alliance, 520 8th Avenue, 10018 New York, NY, United States of America

^e University of Kisangani, Faculty of Science and Center for Biodiversity Monitoring, BP2012, Kisangani, Democratic Republic of Congo

^f Global Health Institute, University of Antwerp, Campus drie Eiken, Gouverneur Kinsbergen Centrum, Doornstraat 331, 2610 Wilrijk, Belgium

^g Royal Belgian Institute of Natural Sciences, Rue Vautier 29, 1000 Brussels, Belgium

^h Evolutionary Ecology Group, University of Antwerp, Campus Drie Eiken

ARTICLE INFO

Article history:

Received 25 May 2022

Revised 22 June 2022

Accepted 30 June 2022

Keywords:

Monkeypox
Democratic Republic of Congo
Chickenpox
Diagnostic
Orthopoxvirus

ABSTRACT

Background: Following an outbreak of cases of vesicular-pustular rash with fever, evocative of human monkeypox, in Bas-Uélé province, Democratic Republic of Congo, surveillance was strengthened.

Methods: Households with at least one active generalized vesicular-pustular rash case were visited, and contact and clinical history information were collected from all household members. Whenever possible, skin lesions were screened by polymerase chain reaction for the monkeypox virus, followed by the varicella-zoster virus, when negative for the former.

Results: Polymerase chain reaction results were obtained for 77 suspected cases, distributed in 138 households, of which 27.3% were positive for monkeypox, 58.4% positive for chickenpox, and 14.3% negative for both. Confirmed monkeypox cases presented more often with monomorphic skin lesions on the palms of the hands and on the soles of the feet. Integrating these three features into the case definition raised the specificity to 85% but would miss 50% of true monkeypox cases. A predictive model fit on patient demographics and symptoms had 97% specificity and 80% sensitivity but only 80% and 33% in predicting out-of-sample cases.

Conclusion: Few discriminating features were identified and the performance of clinical case definitions was suboptimal. Rapid field diagnostics are needed to optimize worldwide early detection and surveillance of monkeypox.

Published by Elsevier Ltd on behalf of International Society for Infectious Diseases.

This is an open access article under the CC BY-NC-ND license

(<http://creativecommons.org/licenses/by-nc-nd/4.0/>)

Introduction

Monkeypox virus (MPXV) is a deoxyribonucleic acid virus, belonging to the Orthopoxvirus genus within the Poxviridae family, which also includes other human pathogenic viruses such as

the vaccinia, cowpox, and variola (smallpox) viruses. MPXV is currently the most prevalent human Orthopoxvirus and has been re-emerging since the eradication of smallpox in 1980. In humans, it causes a disease similar to smallpox, called monkeypox (Durski *et al.*, 2018). Two clades of MPXV have been identified: the West African clade (MPXV-WA), occurring in forest areas situated west of Nigeria and the Congo Basin clade (MPXV-CB) in Central Africa (Sklenovská and Van Ranst, 2018). After an incubation period of usually 7 to 14 days (range from 5 to 21 days), human monkeypox typically begins with systemic symptoms (i.e., fever, myalgia), followed by a rash, classically starting on the face before centrifugally spreading to other parts, including hands and feet in patients infected with the MPXV-CB clade. Yet the route of infection seems

* Correspondence: Anne Laudisoit, Tel: +1-917-912-2155

E-mail addresses: gaspard.mande@unikis.ac.cd (G. Mande), boseluc@gmail.com (I. Akonda), Adeweggheleire@ext.itg.be (A. De Weggheleire), ibrosius@itg.be (I. Brosius), lliesenborghs@itg.be (L. Liesenborghs), EBottieau@itg.be (E. Bottieau), ross@ecohealthalliance.org (N. Ross), guycrispin.gembu@unikis.ac.cd (G.-C. Gembu), robert.colebunders@uantwerpen.be (R. Colebunders), erik.verheyen@uantwerpen.be (E. Verheyen), dauly_ngbonda@yahoo.com (D. Ngonda), herwig.leirs@uantwerpen.be (H. Leirs), laudisoit@ecohealthalliance.org (A. Laudisoit).

Table 1

Clinical case definitions for monkeypox applied in the Democratic Republic of the Congo surveillance system and in this study.

DRC clinical case definition for use in health facilities (clinical case definition A in Osadebe et al., 2017)	Any person presenting with sudden onset of high fever followed after a few days by a vesicular-pustular rash predominantly on the face, palms of the hands, and soles of the feet, or presence of at least five variola-like scars
DRC clinical case definition for community surveillance Clinical case definition as applied in our study	Any person presenting with fever and a cutaneous rash Any person with an active generalized vesicular-pustular rash (i.e., presenting at least five cutaneous lesions, such as macules, papules, vesicles, pustules, or crusts)
Clinical case definition B (as evaluated in Osadebe et al., 2017)	Any person with a rash with deep-seated/firm lesions AND either febrile prodrome or lymphadenopathy or lesion of palms or soles

to influence clinical presentation, incubation period, severity, and duration of the disease (Reynolds et al., 2006) and in particular, as observed in recent monkeypox outbreaks outside Africa (Adler et al., 2022; Noe et al., 2022). The skin lesions generally appear all at the same stage (monomorphic), evolving within 2 to 4 weeks from macules to papules, vesicles, pustules, crusts, and scabs. Complications (e.g. secondary bacterial skin infections, bronchopneumonia, keratitis, cecity) (Damon, 2011) are frequent and mortality may be up to 10% in children. People (primary cases) get infected through contact with infected animals during farming, hunting, or bushmeat preparation activities, and human-to-human transmission (secondary cases) also occurs by respiratory droplets or by close contact with infected lesions or bodily fluids (Diaz, 2021; Makhani et al., 2019; Petersen et al., 2019).

Human monkeypox was first described in 1970 in the Democratic Republic of the Congo (DRC) (Ladnyj et al., 1972). It is now found in more than half of the health zones of the country, reaching an incidence exceeding 5000 cases per year (Hoff et al., 2017). More than 35 epidemics have been reported in other African countries and in recent years, cases have also been increasing in returning travelers (Erez et al., 2019; Hobson et al., 2021; Mauldin et al., 2022; Rao et al., 2022; Yong et al., 2020), culminating in 2022 in an unprecedented multicountry outbreak (World Health Organization World Health Organization (WHO) 2022). Since 2002, monkeypox has been a notifiable disease in DRC and part of the nationwide implemented Integrated Disease Surveillance and Response (IDSR) system (DRC, 2011, 2012). All suspected clinical cases (and deaths) that meet the clinical case definition have to be reported weekly by each health zone to the national level (Hoff et al., 2017). As shown in Table 1, two case definitions of “suspected monkeypox cases” are provided in the national IDSR guideline: one for use in health facilities by nurses/doctors and a much broader second one (“fever and cutaneous rash”), designed for surveillance by community health workers.

Due to the remoteness of the endemic areas confirmatory testing by polymerase chain reaction (PCR), only available in the national reference laboratory (“Institut National de Recherche Biomédicale,” INRB, Kinshasa), is rarely performed. As a result, the robustness of field surveillance based on clinical suspicion has so far been difficult to evaluate. Several diseases with generalized skin eruption may mimic monkeypox, such as chickenpox, measles, molluscum contagiosum, or rickettsioses. The field differential diagnosis between monkeypox and chickenpox is particularly challenging (Jezek et al., 1988; Leung et al., 2019; MacNeil et al., 2009) and coinfections are frequent (Hughes et al., 2020). Recent attempts to design clinical case definitions with a higher specificity for surveillance or care purposes have not yet undergone external validation (Osadebe et al., 2017).

After alerts from several health zones of the Bas-Uélé province, northeastern DRC (Aketi, Buta, and Titule; Fig. 1) of a sharp increase of suspected monkeypox cases, a first exploratory mission was conducted in 2016 and confirmed an ongoing outbreak of febrile illness, with skin eruption, suspecting monkeypox. It also identified important challenges and gaps impacting the quality of the surveillance and outbreak data, including the nonsystem-

atic registration of cases and the scarcity of sampling kits in the field. An active surveillance component was added, and access to confirmatory testing was reinforced through the project entitled “Strengthening academic capacity to respond to monkeypox epidemics: discrimination and origin of eruptive fevers in the Democratic Republic of Congo (DRC)” (Laudisoit, 2017).

Methods

Study design, setting and population

In the framework of the project, enhanced active surveillance and household investigation of suspected monkeypox cases were first initiated in three health zones (Aketi, Buta, Titule) of the Bas-Uélé province and later focused on the axis going North from Aketi (Fig. 1), where most cases had been initially detected. This region is located in the lowland tropical rainforest of the Congo Basin, with a long rainy season from April to November, where the population lives mainly from subsistence farming, hunting, and small-scale livestock breeding.

The study population consisted of all suspected monkeypox cases as well as all members of their households, residing in locations accessible to trained study collaborators. For this study, a suspected monkeypox case was defined as “any person with an active generalized vesicular-pustular rash, that is, presenting with five or more cutaneous lesions, such as macules, papules, vesicles, pustules, or crusts (Table 1)”, based on the DRC case definition for community surveillance (DRC, 2012). This study case definition was a bit stricter than that for community surveillance (a minimal number of lesions was required) but still aimed to largely capture any patients with active skin eruption that could be sampled for diagnostic evaluation.

Enhanced surveillance and household investigation

Households in which at least one case of febrile eruptive skin disease was reported by community health care workers were visited by the study team. The household visits were done during three field sessions (September 8–21, 2017, March 19–29, 2018, October 27 till November 9, 2018) and during the interval periods by trained registered nurses from the study areas.

At the household level, after having obtained written informed consent for household inclusion from the household head, epidemiological and clinical data were collected (number of household members, gender, and age of each member, health zone/area and village of residence, geographical coordinates, past episodes of fever with skin eruption, and smallpox vaccination status of each household member). In addition, for each individual considered as a suspected monkeypox case, signs and symptoms (focused on monkeypox features, such as fever prodrome, type/stage of rash, ocular lesions, cervical lymphadenopathy) and risk factors (contact with sick person, animal contact, type of contact, time since contact) were collected using standardized questionnaires. In the case of additional individual consent (or ascent by child plus consent of parent/tutor in case of children) and if sampling material was

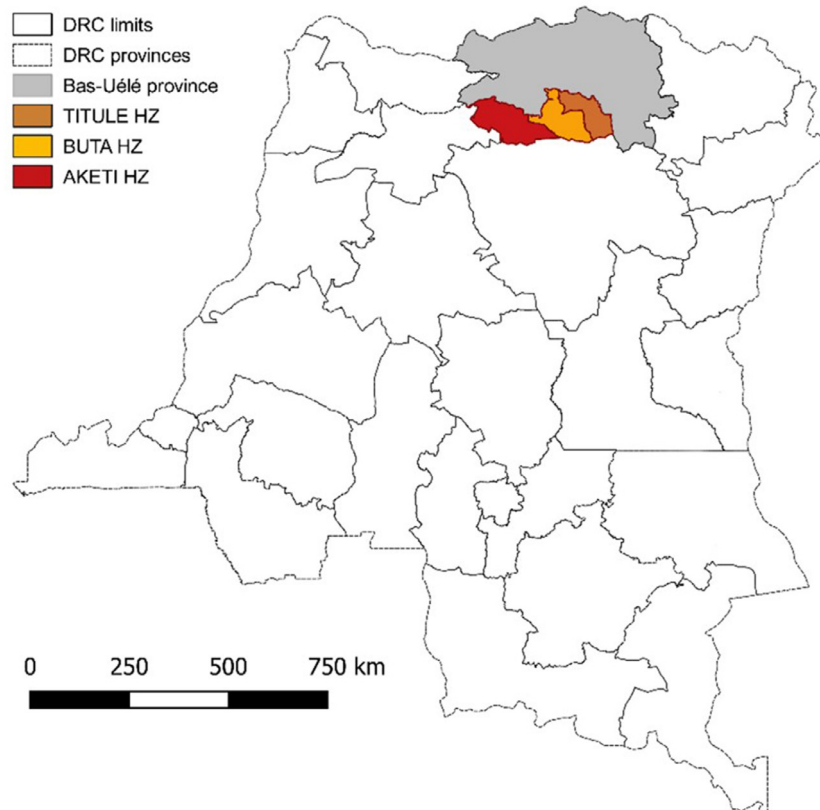


Fig. 1. Map of the Democratic Republic of the Congo (DRC) indicating the Bas-Uélé province and the health zones of Aketi, Buta, and Titule (study area).

available, up to a maximum of two skin biopsies (crusts, pustules, or vesicle liquid) were collected, following a strict standard operational procedure. One skin biopsy was stored 'dry' at room temperature in individual vials, as per DRC monkeypox case management and surveillance guidelines and sent to INRB in Kinshasa (DRC, 2012). The second biopsy was stored in ethanol (70%) as a backup and stored at UNIKIS. Venous blood was not collected. Data on outcomes or onward human-to-human transmission were not available because cases and their households were not followed up longitudinally after the initial visit. During each field visit, information obtained in one household could lead to further investigational visits in other households of the same village (snowball enrollment).

Laboratory procedures

Skin lesion samples were screened sequentially at the virology laboratory of INRB, Kinshasa for Orthopoxviruses (OPXV), using an Orthopoxvirus-specific real-time in-house PCR assay (Osadebe *et al.*, 2017) and if the lesions tested negative for OXPV, a second real-time PCR assay targeting the varicella-zoster virus (VZV) was performed. OPXV-positive samples were not tested further for VZV and were considered MPXV because virtually no other known human pathogenic Orthopoxvirus causes a similar smallpox-like rash in humans. Results were officially reported back from the reference laboratory (INRB) to the provincial central health bureau as positive, negative, or "neither MPXV nor VZV", after interpretation of cycle threshold values.

Evaluation of clinical case definitions

After this study was designed and approved, another research group published the results of a large case series of confirmed

monkeypox and chickenpox cases and evaluated the DRC health facility case definition (called case definition A in this manuscript) and an alternative one (case definition B, elaborated to better discriminate both conditions) (Table 1). In addition, based on a receiver operating characteristic model including a set of 12 signs and symptoms, other combinations were proposed because the performance of both case definitions A and B was unsatisfactory (Osadebe *et al.*, 2017). We used our dataset retrospectively to also evaluate the diagnostic accuracy of both case definitions (with some slight adaptations; Table 4) and other combinations, using the actual features that had been captured during our field study.

Statistical analysis

Descriptive statistics, using medians and interquartile ranges for continuous variables and percentages for categorical variables, were used to summarize the results of the household investigations. Comparisons were calculated by Pearson's chi-square or Fisher's exact test for categorical variables and the Kruskal-Wallis test for continuous variables. Differences were considered statistically significant if $P < 0.05$. Diagnostic value and performance of signs/symptoms and different case definitions were expressed in sensitivity, specificity, positive and negative predictive value (PPV and NPV), and positive and negative likelihood ratios (LR+ and LR-) using standard formulas. All statistical analyses were performed using Stata 15.0 software (StataCorp LP, College Station, TX, USA).

Predictive model

We fit a model to predict PCR-confirmed cases using patient sex and age group, previous smallpox vaccination history, and presence of signs/symptoms. We generated interaction variables for every

Table 2
Overview of enhanced surveillance results from September 2017 to May 2019

Health zones	Health areas	Nr individuals /households visited		Suspected cases (households with a suspected case)		Suspected cases (households) sampled and with test result		Suspected cases (households) with PCR-MPX positive result		Suspected cases (households) with PCR-VZV-positive result	
		Individuals	Households	Nr	%	Nr	%	Nr	%	Nr	%
Aketi	Aboso	446	59	30 (22)	6.7 (37.3)	22 (17)	73.3 (77.3)	3 (3)	13.6 (17.6)	17 (12)	77.3 (70.6)
	Bombongolo	195	35	53 (35)	27.2 (100)	23 (20)	43.4 (57.1)	5 (5)	21.7 (25)	15 (13)	65.2 (65.0)
	Bondunga	183	33	38 (33)	20.8 (100)	20 (18)	52.5 (54.5)	6 (6)	30.0 (33.3)	8 (7)	40.0 (38.9)
	Mombuasa	6	1	1 (1)	16.7 (100)	1 (1)	100 (100)	1 (1)	100 (100)	0 (0)	0.0 (0.0)
	Bakondila 1	5	1	1 (1)	20.0 (100)	1 (1)	100 (100)	0 (0)	0.0 (0.0)	0 (0)	0.0 (0.0)
	Bunduki	1	1	1 (1)	100 (100)	1 (1)	100 (100)	0 (0)	0.0 (0.0)	1 (1)	100 (100)
	Sub-total	836	130	124 (93)	14.8 (71.5)	68 (58)	47.8 (59.1)	15 (15)	18.0 (23.1)	41 (33)	81.8 (80.8)
Buta	Malikuta	32	4	4 (4)	12.5 (100)	4 (4)	100 (100)	3 (3)	75.0 (75.0)	1 (1)	25.0 (25.0)
	Triangle	24	2	2 (2)	8.3 (100)	1 (1)	50.0 (50.0)	0 (0)	0.0 (0.0)	1 (1)	100 (100)
	Yeme	20	2	2 (2)	10.0 (100)	1 (1)	50.0 (50.0)	1 (1)	100 (100)	0 (0)	0.0 (0.0)
	Koteli	10	1	1 (1)	10.0 (100)	0 (0)	0.0 (0.0)	0 (0)	0.0 (0.0)	0 (0)	0.0 (0.0)
	Bamaria	10	2	2 (2)	20.0 (100)	2 (2)	100 (100)	0 (0)	0.0 (0.0)	2 (2)	100 (100)
		Sub-total	96	11	11 (11)	11.5 (100)	8 (8)	72.7 (72.7)	4 (4)	50.0 (50.0)	4 (4)
Titule	Agemeto	16	2	3 (2)	18.7 (100)	2 (2)	50.0 (50.2)	2 (2)	100 (100)	0 (0)	0.0 (0.0)
	Total	948	143	138 (106)	14.6 (74.1)	78 (68)	56.5 (64.1)	21 (21)	26.9 (30.9)	45 (37)	57.7 (54.4)

binary combination of variables, dropping interactions that were fully determined by other variables. We then fit a Bayesian logistic model to random training subset of 75% of PCR-confirmed cases, using a regularizing prior (Student's *t*-test) on variable coefficient to optimize for out-of-sample prediction. We calculated the posterior odds ratios associated with each variable and interaction and measured out-of-sample performance on the remaining 25% of cases. Model fitting was performed in R 4.2.0 (R Core Team, 2022), using the Stan modeling framework (Stan Development Team, 2022) and brms package (Bürkner, 2017).

Results

Generalized skin eruption with fever, evocative of human monkeypox, was notified in 143 households, making a total of 948 patients (median number of members per household: 6; interquartile range 4–9) and reported by the RECO (community relays) to the local health staff. These households were visited by the study teams between September 2017 and May 2019 (94 in the first year and 49 in the second year of the project). In a total of 106 households (106/143; 74.1%), representing 678 household members, the study team confirmed that at least one case responded to the study definition of suspected monkeypox. Overall, 138 patients (of whom 74% or 54% were aged <15 years) fulfilled the study definition of suspected monkeypox case (Table 2).

The cases resided in 32 villages distributed in 12 health areas within three health zones (Aketi, Buta, Titule). A total of 89 households (89/106; 84.0%) had one suspected case, 10 had two, four had three, one had four, and within two families, all members (six and seven, respectively) had an active generalized vesicular-pustular rash, fitting the study definition at the time of the household visit. During site visits, among households with active cases

of skin eruption, 23/100 ($n = 100$, information missing for six households) also reported recent and distant past episodes of fever with generalized skin eruption in their households (distant, i.e., >3 months earlier for 13; recent, i.e., within the last 3 months for 10).

Complete PCR results were obtained for 77 of the 138 active suspected monkeypox cases (55.8%). A total of 21 of 77 patients (27.3%) tested positive for MPXV, and 45, out of the 56 MPXV-negatives, were positive for VZV. The remaining 11 cases remained negative for both MPXV and VZV. One suspected monkeypox case, negative for MPXV, was not tested for VZV. Next, we compared the sociodemographic, clinical characteristics, and risk factors between the 21 confirmed monkeypox cases, the 45 confirmed chickenpox cases, and the 11 cases reported as negative for both PCR assays (Table 3).

Sociodemographic characteristics (age, gender) were similar in the three groups. In terms of clinical signs and symptoms, rash characteristics were the only symptoms that differed significantly between monkeypox and chickenpox cases. Confirmed cases of monkeypox more often presented with cutaneous lesions in the same stage of the skin eruption (monomorphic) (85.7% vs 40.0% for the chickenpox cases; $P = 0.001$) and more often had lesions on the palms of the hands (85.7% vs 33.3%; $P < 0.001$) and soles of the feet (71.4% vs 17.8%; $P < 0.001$) than patients with chickenpox. Forty percent of patients with confirmed monkeypox and chickenpox presented with ocular lesions/corneal opacities. Similarly, the frequency of cervical/submandibular lymphadenopathy was not significantly different between the two groups.

Contact with a person with generalized skin eruption within the past 3 weeks was reported in 70% of the cases of all three groups, with no statistical difference. The presence of another suspected monkeypox case (according to the study definition) in the household tended to be more frequent in confirmed chickenpox

Table 3

Socio-demographics, clinical characteristics, and risk factors for the confirmed monkeypox (MPXV-positive), chickenpox (VZV-positive), and PCR-negative cases^a MPX and VZV case in the same household of seven members, all presenting as clinical suspects. Note: rash on the face is not reported here as it was part of the study definition (frequency 100% in all three groups).

	MPX-positive (n=21)	VZV-positive (n=45)	MPX- and VZV-negative (n=11)	p-value
Age (median, IQR)	16 (4-30)	18 (7-29)	11 (5-27)	0.60
Age groups (n,%)				
<5 years	6/21 (28.6)	6/45 (13.3)	2/11 (18.2)	0.46
5-15 years	4/21 (19.1)	13/45 (28.9)	5/11 (45.4)	
15-25 years	4/21 (19.1)	11/45 (24.4)	0 (0.0)	
25-40 years	5/21 (23.8)	12/45 (26.7)	4 (36.4)	
>40 years	2/21 (9.5)	3/45 (6.7)	0 (0.0)	
Gender (n, %)				
Male	14/21 (66.7)	25/45 (55.6)	6/11 (54.6)	0.72
Female	7/21 (33.3)	20/45 (44.4)	5/11 (45.4)	
Past episode of generalized rash (n,%)	0/21 (0.0)	2/45 (4.4)	0/11 (0.0)	1.00
Days since start current episode of rash (median, IQR)	7 (6-12)	5 (3-6)	7 (6-10)	0.001
Fever prodrome (n,%)	20/21 (95.2)	42/45 (93.3)	11/11 (100)	1.00
Days since start of fever (median, IQR)	8 (2-10)	6 (2-9)	9 (8-12)	0.03
Rash presentation (n, %)				
Lesions of same stage (monomorphic)	18/21 (85.7)	18/45 (40.0)	7/11 (63.6)	0.001
Lesions of several different stages	3/21 (14.3)	27/45 (60.0)	4/11 (36.4)	
Rash on hand palms (n, %)	18/21 (85.7)	15/45 (33.3)	8/11 (72.7)	<0.001
Rash on foot soles (n, %)	15/21 (71.4)	8/45 (17.8)	9/11 (81.8)	<0.001
Lymphadenopathy (submandibular & cervical) (n,%)	10/21 (47.6)	15/45 (33.3)	4/11 (36.4)	0.54
Ocular lesions/corneal opacities (%)				
None	13/21 (61.9)	28/45 (62.2)	9/11 (81.8)	0.72
Unilateral	2/21 (9.5)	2/45 (4.4)	0/11 (0.0)	
Bilateral	6/21 (28.6)	15/45 (33.3)	2/11 (18.2)	
Contact with any person with a generalized rash in the last 3 weeks (n, %)	12/18 (66.7)	24/34 (70.6)	8/9 (88.9)	0.57
Days since contact (median, IQR)	14 (11-16)	12 (9-14)	11 (11-18)	0.36
Other suspected monkeypox cases in the household at home visit (n, %)				0.04
0	19/21 (90.5)	26/45 (57.8)	10/11 (90.9)	
1	1/21 (4.8)	11/45 (24.4)	1/11 (9.1)	
2	0/21 (0.0)	7/45 (15.6)	0/11 (0.0)	
6	1/21 (4.8)*	1/45 (2.2)*	0/11 (0.0)	
Consumption of bushmeat in the last 3 weeks (n, %)	19/21 (90.5) ^b	35/45 (77.8) ^b	7/11 (63.6)	0.21
Type bushmeat eaten (n, %)				
"Bandro" or "Motomba" (Gambian rat, <i>Cricetomys gambianus</i>)	6/19 (31.6)	19/35 (54.3)	1/7 (14.3)	
"Apwa" or "Makako" or "Likako" (Monkey, <i>Pan troglodytes</i>)	5/19 (26.3)	5/35 (14.3)	2/7 (28.6)	
"Esende" (squirrel, <i>Funisciurus</i>)	3/19 (15.8)	5/35 (14.3)	3/7 (42.8)	
"Kulupa"	3/19 (15.8)	4/35 (11.4)	0/7 (0.0)	
"Mboloko" (Duiker, <i>Philanthomba</i>)	2/19 (10.5)	2/35 (5.7)	0/7 (0.0)	
"Moputé"	0/19 (0.0)	0/35 (0.0)	1/7 (14.3)	
Days since last bushmeat (median, IQR)	10.5 (7-14)	10 (9-14)	12 (7-17)	0.94

^a MPX and VZV case in the same household of seven members, all presenting as clinical suspects. Note: rash on the face is not reported here as it was part of the study definition (frequency 100% in all three groups)

^b Calculated considering missing answers as 'not having consumed bushmeat during the last 3 weeks'

cases than in MPX cases. Recent bushmeat consumption (giant pouched rat, primates, squirrels, etc.) was very common (>80%) in all three groups, with no statistical difference.

A similar number of patients with confirmed monkeypox was reported from the three health areas (area 1: 3/20, area 2: 5/20, area 3: 6/14), surveyed within the Aketi health zone. Of note, in one study household, MPXV- and VZV-positive cases were found concomitantly. Of note, in the seven-member household, of which each individual presented with a rash, two patients were sampled, and one tested positive for MPX and the other patient tested positive for VZV. For the child, concurrent infection with MPX and VZV was not excluded. Comparing the clinical and sociodemographic features of suspected monkeypox cases with and without molecular results (Supplementary Table 1), no difference was observed except for the duration of fever (7 days [interquartile range 3-10] vs 9 days [6-12], respectively; $P = 0.008$).

Based on the PCR results, the case definition used in this study led to a false-positive rate of 73% (56 of 77 tested samples were not confirmed as monkeypox). As detailed in Table 4, the case definition for "health facility" of the DRC national program would have decreased the false-positive rate to 20% (corresponding to a speci-

ficity of 80%) but would have missed one-third of the true monkeypox cases (sensitivity of 67%). The proposed alternative case definition (18) would have an excellent sensitivity but a very low specificity (with >95% of false-positives for monkeypox). All three identified discriminative features ("monomorphic rash", "rash on palms", "rash on soles") had a weak confirming power for monkeypox ($LR+ < 3$) when taken separately. Only the presence of all three features together has a good predictive value ($LR+ > 3$), slightly better than that of the "health facility" case definition, increasing the probability of confirmed monkeypox above 50% (from a baseline frequency of 27% in suspected cases). In contrast, the absence of all three discriminative features would virtually exclude the diagnosis of monkeypox.

The predictive model (Fig. 2) had 97% specificity and 80% sensitivity in predicting PCR-confirmed monkeypox for in-sample cases but only 80% specificity and 33% sensitivity for out-of-sample cases. Only one feature, the interaction of "rash on palms" in male patients, was a consistent predictor in >95% of model posterior samples. Other features that were positive predictors in >80% of posterior samples were all interactions including "rash on palms", "rash on soles", and "monomorphic rash". Prior vaccination against

Table 4
Diagnostic performance of “health facility” and alternative case definitions in the study dataset

	True positives (n)	False-positives (n)	True negatives (n)	False negatives (n)	Sensitivity (%)	Specificity (%)	Pos LR	Neg LR	PPV (%) ^a (or probability if criteria present)	NPV	Probability if criteria absent (%)
DRC “health facility” case definition: (Vesicular-pustular) rash AND fever prodrome, AND lesions on hands palms and feet soles (adapted case definition A, Osadebe et al., 2017)	14	11	45	7	66.7	80.3	3.39	0.30	56.0	86.5	13.5
Alternative case definition B (Osadebe et al., 2017): Rash AND fever prodrome, OR rash on hands palms or feet soles, OR submandibular/cervical lymphadenopathy	21	54	2	0	100	3.6	1.04	0.96	28.0	100	0
Rash after a fever prodrome, AND monomorphic lesions	18	25	31	3	85.7	55.3	1.92	0.26	41.9	91.2	8.8
Rash after fever prodrome, AND lesions on hand palms	18	23	33	3	85.7	58.9	2.09	0.24	43.9	91.7	8.3
Rash after fever prodrome, AND lesions on feet soles	15	17	39	6	71.4	69.6	2.35	0.43	46.9	86.7	13.3
Rash after fever prodrome, AND monomorphic lesions, AND lesions on hand palms or feet soles	16	16	40	5	76.2	71.4	2.66	0.36	50.0	88.9	11.1
Rash after fever prodrome, AND monomorphic lesions, AND lesions on hand palms and feet soles	11	8	48	10	52.4	85.7	3.66	0.27	57.9	82.8	17.2
Rash after fever prodrome, AND monomorphic lesions, OR lesions on hand palms or feet soles)	21	38	18	0	100	32.1	1.47	0.68	35.6	100	0

Note: All patients had at least five active lesions; LR denotes likelihood ratio; PPV positive predictive value; NPV negative predictive value.

^a The pretest probability of confirmed monkeypox was 27.3% (21/77) in suspected monkeypox cases (see study clinical case definition)Note: All patients had at least five active lesions; LR denotes likelihood ratio; PPV positive predictive value; NPV negative predictive value ^aThe pretest probability of confirmed monkeypox was 27.3% (21/77) in suspected monkeypox cases (see study clinical case definition)

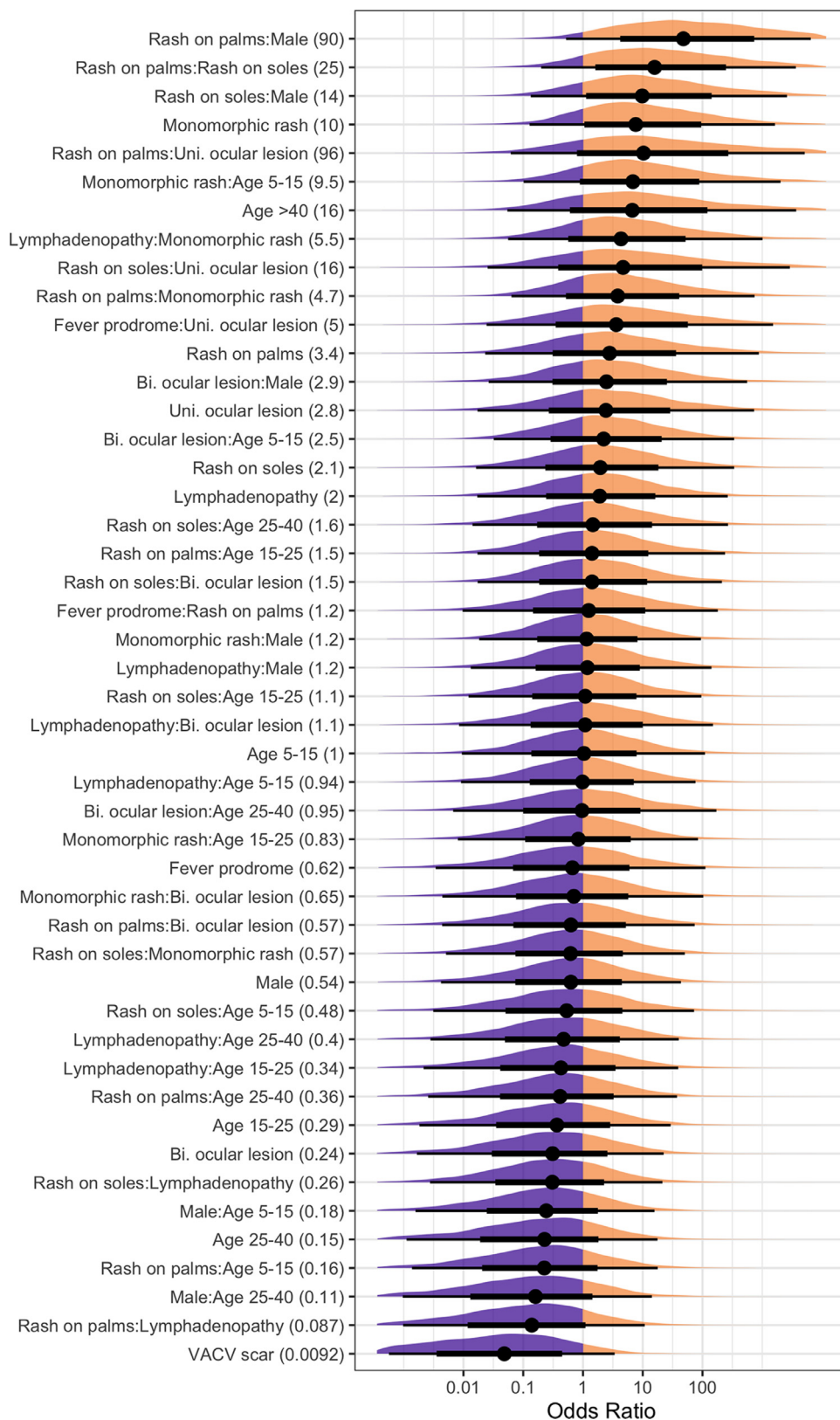


Fig. 2. Coefficients for all variables and interactions (features) in the predictive model, scaled as odds ratios (ORs). Mean OR is printed in the parentheses of each feature, with mean (dots), 66% posterior interval (thick lines), 95% posterior interval (thin lines), and full posterior shape (density plots) shown in the plot.

smallpox confirmed by presence of vaccinia vaccine scar was the strongest predictor against PCR-confirmed monkeypox (in 93% of samples).

Discussion

The enhanced surveillance of monkeypox in Bas-Uélé province by a dedicated “One Health” team confirmed that only 27% of suspected cases, identified by an adapted “community” case definition, were confirmed as monkeypox. Most cases were finally diagnosed as chickenpox. The investigation did not identify clear epidemiological risk factors for monkeypox. Only three clinical features (monomorphic rash, rash on palms of hands, and rash on soles of feet) had some discriminative value for monkeypox, but no combination of symptoms and no alternative case definitions had a strong confirming power for decisive diagnosis.

This study has several limitations, inherent to the project and the health system in which it was embedded. First, the central objective of the project was education rather than research, with a progressive improvement of generic capacities toward monkeypox surveillance and detection. The clinical data collected during the project have thus evolved in terms of quality as the capacity increased over time, but some differences may have persisted between examinations made by medical doctors (during the field visits) and by nurses during the absence of supervision. Second, the intermittent provision of standard kits led to gaps in systematic skin sampling (which could be better addressed during the field visits). Although we can consider that the subset of patients who were sampled for the molecular workup was selected at random, some bias may have occurred during these periods of higher availability. The technical difficulties related to sample preservation and transportation may have impacted the quality of the deoxyribonucleic acid and hence, of the molecular results because laboratory staff and resources had to be redirected to the reference diagnosis of Ebola on several occasions during the successive outbreaks in DRC at that time. This has likely caused some false-negative results, as reflected by the clinical presentation of the 11 patients who were PCR-negative, that was quite similar to that of confirmed monkeypox cases. Finally, as a result of the sequential INRB testing protocol, we cannot report the proportion of monkeypox cases concomitantly infected with VZV.

The low specificity of the case definition for community surveillance of monkeypox implies the inclusion of many false-positives in both the epidemiologic and clinical records scattered in peripheral health structures, with some under- and overestimation of the actual caseload. Most captured cases were in fact chickenpox, confirming that the epidemiologic characterization and clinical identification of monkeypox in Bas-Uélé are also seriously blurred by the coendemicity of both conditions that share many similar and overlapping features (Jezeq *et al.*, 1988; Leung *et al.*, 2019; MacNeil *et al.*, 2009). It is expected that cases first captured by the very sensitive “community” case definition are assessed through the more restrictive “health facility” case definition, but this two-step clinical strategy may be not very well apprehended by less trained health workers. In addition, the latter case definition still includes a substantial number of nonmonkeypox cases despite that it may create difficulties to classify the subgroup captured by the “community” definition, which is secondarily rejected. Based on our limited dataset, we confirmed the discriminative value of some features, such as the monomorphic aspect of the rash (all body lesions presenting at the same stage) and the preferential localization on palms and soles, and we also highlighted that their confirming power for monkeypox is limited. In contrast with other researchers, we did not observe any predictive value for other characteristics, such as cervical lymphadenopathy, ocular opacities, presence of other suspected cases in households that are indica-

tive of chickenpox in our dataset, or consumption of bushmeat because they were all frequently reported in patients with confirmed monkeypox and chickenpox. The negative correlation with previous vaccination against smallpox further supports high residual protection against monkeypox clinical diseases outcome, which is also supported by the generational divide in susceptibility because smallpox vaccination was discontinued (Rimoin *et al.*, 2010). Looking for alternative case definitions, based on novel combinations of symptoms, did not substantially improve the diagnostic performance. Our predictive model also highlighted the importance of a monomorphic rash and localization on palms and soles. However, the model's low predictive power, given its inclusion of all combinations of symptoms, shows the fundamental limitation on diagnosis without point-of-care tests. Because of its epidemic potential and substantial mortality and morbidity, accurate and swift diagnosis of monkeypox is crucial. Although treatments are being developed (Grosenbach *et al.*, 2018; Laudisoit *et al.*, 2018) and vaccines being approved (Petersen *et al.*, 2019), there is an even more pressing need for reliable rapid field diagnosis. Evaluation of simplified molecular diagnostic devices in peripheral laboratories (Li *et al.*, 2017) and of rapid point-of-care lateral-flow diagnostic tests, such as ABICAP (Stern *et al.*, 2016), suited to the remote harsh environments where monkeypox may break out at any moment, are key research priorities.

In conclusion, this field investigation confirmed the difficulty observed elsewhere for health and community workers to clinically distinguish between monkeypox and chickenpox—two conditions with similar symptoms but have increasingly divergent management. Combining lesion distribution and number, size, shape, and rugosity of lesions could potentially improve field discrimination between the two diseases. Development and field evaluation of breakthrough diagnostics and encouraging “One Health” intervention teams are key to timely and adequately address the variety and complexity of epidemic-prone diseases, such as monkeypox, especially in areas with increasing evidence of cocirculation of zoonotic and anthroponotic pathogens (Bunge *et al.*, 2022). The current outbreak of monkeypox outside Africa illustrates also the importance of intensified monkeypox surveillance in Africa among human and animal populations.

Acknowledgments

The authors are grateful to the Bas-Uélé province authorities and, in particular, the Ministry of Health of Bas-Uélé province for administrative and logistical support. The researchers thank the main nurses of the visited health areas (Lizombe René and Egula Franck) and the biologists of the University of Kisangani (UNIKIS), the Center for Biodiversity Monitoring (Centre de Surveillance de la Biodiversité) for their help and scientific support during field surveys (Baelo Pascal, Malekani André, Musaba Prescott, Nebese Casimir, and Ngoy Steve), and the National Institute of Biomedical Research (INRB) team in Kinshasa (Jean-Jacques Muyembe, Elisabeth Putuka and Steve Ahuka) for their scientific support. The authors are grateful to John Feigelson (Ecohealth Alliance) for producing the graphical abstract.

Author Contributions

Conceptualization: Robert Colebunders, Erik Verheyen, Herwig Leirs, and Anne Laudisoit. Data curation: Gaspard Mande, Anja De Weggheleire, and Anne Laudisoit. Formal analysis: Anja De Weggheleire and Noam Ross. Funding acquisition: Robert Colebunders, Erik Verheyen, Herwig Leirs, and Anne Laudisoit. Investigation: Gaspard Mande, Innocent Akonda, Emmanuel Bottieau, Guy-Crispin Gembu, Erik Verheyen, and Anne Laudisoit. Methodology: Anja De Weggheleire, Emmanuel Bottieau, Anne Laudisoit, and Noam

Ross. Project administration: Robert Colebunders, Erik Verheyen, and Anne Laudoisot. Supervision, Anja De Weggheleire, Emmanuel Bottieau, Erik Verheyen, and Anne Laudoisot. Visualization, Anne Laudoisot. and Noam Ross. Writing – original draft: Gaspard Mande, Innocent Akonda, Anja De Weggheleire, and Emmanuel Bottieau. Writing – review & editing: all authors. All authors have read and agreed to the published version of the manuscript.

Conflicts of interest

The authors have no competing interests to declare.

Funding

This research was funded by the Flemish Interuniversity Council for University Development Cooperation (VLIR-UOS) through the VLIR TEAM SI project CD2017SIN199A102 “Strengthening the academic capacity to respond to Monkeypox Outbreaks: Discrimination and Origin of Eruptive Fevers in the Democratic Republic of Congo (2017–2019)”. ADW, EB, and LL were members of the Institute of Tropical Medicine’s Outbreak Research Team, which is financially supported by the Department of Economy, Science, and Innovation of the Flemish government.

Institutional Review Board Statement

The study was conducted following the Declaration of Helsinki and approved by the ethics committee of Antwerp University Hospital, Belgium (reference January 18, 2012) and the ethics committee of the School of Public Health of the University of Kinshasa (approval number ESP/CE/077/2018). In addition to the household-level consent signed by the household head for the home visit and data collection, individual written informed consent was obtained from each participant or their guardian in case of sample collection or picture capture.

Data Availability Statement

Deidentified data and R code for the predictive model are deposited on Zenodo at <https://dx.doi.org/10.5281/zenodo.6574450> (Mande et al., 2022).

Supplementary materials

Supplementary material associated with this article can be found, in the online version, at doi:10.1016/j.ijid.2022.06.060.

References

Adler H, Gould S, Hine P, Snell LB, Wong W, Houlihan CF, et al. Clinical features and management of human monkeypox: a retrospective observational study in the UK. *Lancet Infect Dis* 2022;S1473(3099):00228–6.

Bunge EM, Hoet B, Chen L, Lienert F, Weidenthaler H, Baer LR, et al. The changing epidemiology of human monkeypox—A potential threat? A systematic review. *PLOS Negl Trop Dis* 2022;16.

Bürkner P-C. brms: an R package for Bayesian Multilevel Models Using Stan. *J Stat Softw* 2017;80.

Damon IK. Status of human monkeypox: clinical disease, epidemiology and research. *Vaccine* 2011;29(Suppl. 4):D54–9 Dec 30.

Diaz JH. The disease ecology, epidemiology, clinical manifestations, management, prevention, and control of increasing human infections with animal orthopoxviruses. *Wilderness Environ Med* 2021;32:528–36.

DRC. Guide Technique pour la surveillance intégrée de la maladie et riposte : SIMR, 2011. Direction de Lutte contre la maladie MdlSP. In : Démocratique du Congo R, editor [internet].

DRC. Guide de prise en charge des épidémies dans une zone de santé : Monkeypox. In : Direction de Lutte contre la Maladie MdlSP, RD du Congo, Ministry of Health 2012 (accessed 12 May 2022).

Durski KN, McCollum AM, Nakazawa Y, Petersen BW, Reynolds MG, Briand S, et al. Emergence of monkeypox – West and Central Africa, 1970–2017. *MMWR Morb Mortal Wkly Rep* 2018;67:306–10.

Erez N, Achdout H, Milrot E, Schwartz Y, Wiener-Well Y, Paran N, et al. Diagnosis of imported monkeypox, Israel, 2018. *Emerg Infect Dis* 2019;25:980–3.

Grosenbach DW, Honeychurch K, Rose EA, Chinsangaram J, Frimm A, Maiti B, et al. Oral tecovirimat for the treatment of smallpox. *N Engl J Med* 2018;379:44–53.

Hobson G, Adamson J, Adler H, Firth R, Gould S, Houlihan C, et al. Family cluster of three cases of monkeypox imported from Nigeria to the United Kingdom, May 2021. *Euro Surveill* 2021;26.

Hoff NA, Doshi RH, Colwell B, Kebela-Illunga B, Mukadi P, Mossoko M, et al. Evolution of a disease surveillance system: an increase in reporting of human monkeypox disease in the Democratic Republic of the Congo, 2001–2013. *Int J Trop Dis Health* 2017;25.

Hughes CM, Liu L, Davidson WB, Radford KW, Wilkins K, Monroe B, et al. A tale of two viruses: coinfections of monkeypox and varicella zoster virus in the Democratic Republic of Congo. *Am J Trop Med Hyg* 2020;104:604–11.

Jezek Z, Szczeniowski M, Paluku KM, Mutombo M, Grab B. Human monkeypox: confusion with chickenpox. *Acta Trop* 1988;45:297–307.

Ladnyj ID, Ziegler P, Kim E. A human infection caused by monkeypox virus in Basankusu Territory, Democratic Republic of the Congo. *Bull World Health Organ* 1972;46:593–7.

Laudisoit A. Reinforcing academic capacities to monkeypox outbreaks response: diagnostic and origin of eruptive fevers in the Democratic Republic of the Congo (DRC). <https://www.researchgate.net/project/Reinforcing-academic-capacities-to-Monkeypox-outbreaks-reponse-Diagnostic-and-origin-of-eruptive-fevers-in-the-Democratic-Republic-of-the-Congo-DRC>, 2017 (accessed 12 May 2022).

Laudisoit A, Baelo P, Akonda I, Nebesse C, Ngoy S, Gembu G, et al. A One Health team to improve monkeypox virus outbreak response: an example from the Democratic Republic of the Congo. *Antwerpen: ECTMIH*; 2017.

Laudisoit A, Tepage F, Colebunders R. Oral tecovirimat for the treatment of smallpox. *N Engl J Med* 2018;379:2084–5.

Leung J, McCollum AM, Radford K, Hughes C, Lopez AS, Guagliardo SAJ, et al. Vari-cella in Tshuapa Province, Democratic Republic of Congo, 2009–2014. *Trop Med Int Health* 2019;24:839–48.

Li D, Wilkins K, McCollum AM, Osadebe L, Kabamba J, Nguete B, et al. Evaluation of the GeneXpert for human monkeypox diagnosis. *Am J Trop Med Hyg* 2017;96:405–10.

MacNeil A, Reynolds MG, Carroll DS, Karem K, Braden Z, Lash R, et al. Monkeypox or varicella? Lessons from a rash outbreak investigation in the Republic of the Congo. *Am J Trop Med Hyg* 2009;80:503–7.

Makhani L, Khatib A, Corbeil A, Kariyawasam R, Raheel H, Clarke S, et al. 2018 in review: five hot topics in tropical medicine. *Trop Dis Travel Med Vaccines* 2019;5:5.

Mande G, Akondab I, De Weggheleire A, Brosius I, Liesenborghs L, Bottieau E, Ross N, Gembu Guy-Crispin, Colebunders C, Verheyen E, Daully N, Leirs H, Laudoisot A. (2022). Supplement to: Enhanced surveillance of monkeypox in Bas-Uélé, Democratic Republic of Congo: the limitations of symptom-based case definitions [Data set]. Zenodo. doi:10.5281/zenodo.6811400.

Mauldin MR, McCollum AM, Nakazawa YJ, Mandra A, Whitehouse ER, Davidson W, et al. Exportation of monkeypox virus from the African continent. *J Infect Dis* 2022;225:1367–76.

Noe S, Zange S, Seilmaier M, Antwerpen MH, Fenzl T, Schneider J, et al. Clinical and virological features of first human monkeypox cases in Germany [published online ahead of print, 2022 Jul 11]. *Infection*. 2022;1-6. doi:10.1007/s15010-022-01874-z.

Osadebe L, Hughes CM, Shongo Lushima R, Kabamba J, Nguete B, Malekani J, et al. Enhancing case definitions for surveillance of human monkeypox in the Democratic Republic of Congo. *PLOS Negl Trop Dis* 2017;11.

Petersen BW, Kabamba J, McCollum AM, Lushima RS, Wemakoy EO, Muyembe Tamfum JJ, et al. Vaccinating against monkeypox in the Democratic Republic of the Congo. *Antiviral Res* 2019;162:171–7.

Rao AK, Schulte J, Chen TH, Hughes CM, Davidson W, Neff JM, et al. Monkeypox in a traveler returning from Nigeria – Dallas, Texas, July 2021. *MMWR Morb Mortal Wkly Rep* 2022;71:509–16.

RcoreTeam R. A Language and Environment for Statistical Computing. <https://www.R-project.org/>, 2022 (accessed 12 May 2022).

Reynolds MG, Yorita KL, Kuehnert MJ, Davidson WB, Huhn GD, Holman RC, Damon IK. Clinical manifestations of human monkeypox influenced by route of infection. *J Infect Dis* 2006;194:773–80.

Rimoin AW, Mulembakani PM, Johnston SC, Lloyd Smith JOL, Kisalu NK, Kinkela TL, et al. Major increase in human monkeypox incidence 30 years after smallpox vaccination campaigns cease in the Democratic Republic of Congo. *Proc Natl Acad Sci U S A* 2010;107:16262–7.

Sklenovská N, Van Ranst M. Emergence of monkeypox as the most important Orthopoxvirus infection in humans. *Front Public Health* 2018;6:241.

StanDevelopmentTeam, Stan Modeling Language Users Guide and Reference Manual, 2.29. <https://mc-stan.org>, 2022 (Accessed 12 May 2022).

Stern D, Olson VA, Smith SK, Pietraszczyk M, Miller L, Miethe P, et al. Rapid and sensitive point-of-care detection of orthopoxviruses by ABICAP immunofiltration. *Virology* 2016;13:207.

World Health Organization (WHO), Disease Outbreak News; Multi-country monkeypox outbreak in non-endemic countries. <https://www.who.int/emergencies/disease-outbreak-news/item/2022-DON385>, 2022 (accessed 23 May 2022).

Yong SEF, Ng OT, Ho ZJM, Mak TM, Marimuthu K, Vasoo S, et al. Imported monkeypox, Singapore. *Emerg Infect Dis* 2020;26:1826–30.