



## OPEN ACCESS

EDITED BY  
Mariaelena Occhipinti,  
Radiomics, Liege, Belgium

REVIEWED BY  
Andrea Corsi,  
University of Milano-Bicocca, Italy  
Xiao Zhu,  
Guangdong Medical University, China

\*CORRESPONDENCE  
Younes Belkouchi  
younes.belkouchi@gustaveroussy.fr  
Laetitia Nebot-Bral  
laetitia.nebot-bral@  
cruk.manchester.ac.uk

†These authors have contributed  
equally to this work and share  
first authorship

SPECIALTY SECTION  
This article was submitted to  
Cancer Immunity  
and Immunotherapy,  
a section of the journal  
Frontiers in Oncology

RECEIVED 30 June 2022  
ACCEPTED 04 October 2022  
PUBLISHED 25 October 2022

CITATION  
Belkouchi Y, Nebot-Bral L, Lawrance L,  
Kind M, David C, Ammari S,  
Cournède P-H, Talbot H, Vuagnat P,  
Smolenschi C, Kannouche PL,  
Chaput N, Lassau N and  
Hollebecque A (2022) Predicting  
immunotherapy outcomes in patients  
with MSI tumors using NLR and CT  
global tumor volume.  
*Front. Oncol.* 12:982790.  
doi: 10.3389/fonc.2022.982790

COPYRIGHT  
© 2022 Belkouchi, Nebot-Bral,  
Lawrance, Kind, David, Ammari,  
Cournède, Talbot, Vuagnat, Smolenschi,  
Kannouche, Chaput, Lassau and  
Hollebecque. This is an open-access  
article distributed under the terms of  
the [Creative Commons Attribution  
License \(CC BY\)](https://creativecommons.org/licenses/by/4.0/). The use, distribution  
or reproduction in other forums is  
permitted, provided the original  
author(s) and the copyright owner(s)  
are credited and that the original  
publication in this journal is cited, in  
accordance with accepted academic  
practice. No use, distribution or  
reproduction is permitted which does  
not comply with these terms.

# Predicting immunotherapy outcomes in patients with MSI tumors using NLR and CT global tumor volume

Younes Belkouchi<sup>1,2\*†</sup>, Laetitia Nebot-Bral<sup>3\*†</sup>,  
Littisha Lawrance<sup>1</sup>, Michele Kind<sup>4</sup>, Clémence David<sup>1</sup>,  
Samy Ammari<sup>1,5</sup>, Paul-Henry Cournède<sup>6</sup>, Hugues Talbot<sup>2</sup>,  
Perrine Vuagnat<sup>7</sup>, Cristina Smolenschi<sup>7</sup>,  
Patricia L. Kannouche<sup>3</sup>, Nathalie Chaput<sup>3,8,9</sup>, Nathalie Lassau<sup>1,5</sup>  
and Antoine Hollebecque<sup>7</sup>

<sup>1</sup>Laboratoire d'Imagerie Biomédicale Multimodale Paris-Saclay (BIOMAPS), UMR 1281, Université Paris-Saclay, Inserm, CNRS, CEA, Villejuif, France, <sup>2</sup>Optimisation Imagerie et Santé (OPIS), Inria, CentraleSupélec, Université Paris-Saclay, Gif-Sur-Yvette, France, <sup>3</sup>UMR9019 - CNRS, Intégrité du Génome et Cancer, Université Paris-Saclay, Gustave Roussy, Villejuif, France, <sup>4</sup>Département d'Imagerie Médicale, Institut Bergonié, Bordeaux, France, <sup>5</sup>Département d'Imagerie, Gustave Roussy, Université Paris Saclay, Villejuif, France, <sup>6</sup>Mathématiques et Informatique pour la Complexité et les Systèmes (MICS), CentraleSupélec, Université Paris-Saclay, Gif-Sur-Yvette, France, <sup>7</sup>Département d'Innovation Thérapeutique et d'Essais Précoces (DITEP), Gustave Roussy, Université Paris Saclay, Villejuif, France, <sup>8</sup>Université Paris-Saclay, Faculté de Pharmacie, Chatenay-Malabry, France, <sup>9</sup>Laboratoire d'Immunomonitoring en Oncologie, Gustave Roussy, Villejuif, France

**Background:** Anti-PD-(L)1 treatment is indicated for patients with mismatch repair-deficient (MMRD) tumors, regardless of tumor origin. However, the response rate is highly heterogeneous across MMRD tumors. The objective of the study is to find a score that predicts anti-PD-(L)1 response in patients with MMRD tumors.

**Methods:** Sixty-one patients with various origin of MMRD tumors and treated with anti-PD-(L)1 were retrospectively included in this study. An expert radiologist annotated all tumors present at the baseline and first evaluation CT-scans for all the patients by circumscribing them on their largest axial axis (single slice), allowing us to compute an approximation of their tumor volume. In total, 2120 lesions were annotated, which led to the computation of the total tumor volume for each patient. The RECIST sum of target lesions' diameters and neutrophil-to-lymphocyte (NLR) were also reported at both examinations. These parameters were determined at baseline and first evaluation and the variation between the first evaluation and baseline was calculated, to determine a comprehensive score for overall survival (OS) and progression-free survival (PFS).

**Results:** Total tumor volume at baseline was found to be significantly correlated to the OS (p-value: 0.005) and to the PFS (p-value:<0.001). The variation of the RECIST sum of target lesions' diameters, total tumor volume

and NLR were found to be significantly associated to the OS (p-values: <0.001, 0.006, <0.001 respectively) and to the PFS (<0.001, <0.001, 0.007 respectively). The concordance score combining total tumor volume and NLR variation was better at stratifying patients compared to the tumor volume or NLR taken individually according to the OS (pairwise log-rank test p-values: 0.033, <0.001, 0.002) and PFS (pairwise log-rank test p-values: 0.041, <0.001, 0.003).

**Conclusion:** Total tumor volume appears to be a prognostic biomarker of anti-PD-(L)1 response to immunotherapy in metastatic patients with MMRD tumors. Combining tumor volume and NLR with a simple concordance score stratifies patients well according to their survival and offers a good predictive measure of response to immunotherapy.

#### KEYWORDS

mismatch repair (MMR) deficiency, immunotherapy, CT scan, tumor volume, biomarker, anti-PD1, neutrophil-to-lymphocyte ratio (NLR), anti PDL1

## Introduction

Immunotherapy, and particularly Immune checkpoint blockades (ICBs) harness a patient's own immune response against a tumor by blocking inhibitory signaling molecules expressed on T-cells, thereby strengthening their antitumor response. ICBs such as anti-PD-1 monoclonal antibodies, have revolutionized the management of several cancers (1–3). Over the last few decades, the number of articles regarding immunotherapy has doubled every two years (4) and the clinical trials intend to apply this new anticancer weapon in the treatment of the highest number of patients possible. Several clinical trials have shown the efficacy of anti-PD1 and PD-L1 (anti-PD-(L)1) antibodies on tumors with microsatellite instability (MSI) phenotype in patients (5–7). Considering all types of mutations, MSI tumors display a high mutation rate, with 12–40 mutations/Mb (8, 9). This high mutational burden is supposed to make tumors immunogenic, and this rationale supports the first approval for anti-PD-1 antibodies for patients with metastatic MSI cancers, regardless of the tumor type. MSI tumors represent 15% and 30% of colorectal and endometrial cancers, respectively (10). Thus, most of the clinical studies that have evaluated ICB efficacy recruited patients with MSI colorectal and endometrial cancer (11–13). Nonetheless, MSI tumors have been identified in more than 15 different tumors types and, Azad et al., and Marabelle et al., have reported a highly variable response to anti-PD-(L)1 across MSI tumors, ranging from 0% in MSI brain tumors to 57.1% in MSI endometrial cancers (14, 15). The underlying molecular mechanisms to explain this heterogeneity remains elusive. There is an imperative need to find biomarkers that vary before or early-on after ICB initiation. In this regard, we have

recently proven that the variation of Neutrophil to Lymphocyte ratio (NLR<sub>change</sub>) at 2 months after treatment initiation can discriminate patients with progressive disease from those who respond to PD(L)-1 inhibition, regardless of the anatomic sites of mismatch repair-deficient (MMRD) (16). More precisely, the increase of NLR was significantly associated with better overall survival and progression-free survival (HR<sub>logrank</sub>=0.3755 (% 95CI= 0.2013–0.7004); HR<sub>logrank</sub>=0.5173 (%95CI= 0.2895–0.9241) respectively). Interestingly, the change in NLR was observed earlier (2 months) compared to the tumor changes described by imaging data (CT, MRI), thus allowing NLR<sub>change</sub> to be used for an earlier evaluation of response to treatment.

Other parameters have been described in the literature as biomarker candidates (17, 18). They are classified as tumor-based biomarkers, circulating factors and host-related markers. Tumor-based biomarkers gather the tumor mutational burden (TMB), PD-L1 expression and populations of the immune system that can invade the tumor (tumor microenvironment, TME) and exert antitumoral or pro-tumoral function. The balance between the Ying and Yang of the immune system is being widely studied using scores such as Immunophenoscore (19) and immune set point (20) that quantify tumor immune infiltration (cytotoxic T cells, effector T cell, memory T cell, NK cells, macrophages, T regulatory cells) and chemokine profile. Among circulating factors, the circulating tumor DNA, and cytokines such as IL8 are also being extensively studied (21). Finally, the host parameters and particularly the intestinal commensal microbiota could modify ICB response (22). Moreover, other parameters such as those based on medical images could be important factors as well. The tumor burden can be easily assessed relative to other tumor biomarkers through medical imaging and might have important clinical implications as well (23).

Based on both the number and size of metastases as well as the number of organs affected, the Response Evaluation Criteria In Solid Tumors (RECIST 1.1) (24) is considered as the “gold standard” currently to evaluate CT scans at baseline and post-treatment. The assessment of change in tumor size according to RECIST 1.1 is used for the clinical evaluation of objective response, stable disease and disease progression (24). However, at baseline, the role of tumor size in predicting the outcome of ICB response has been poorly investigated and remains a matter of debate (23). Furthermore, RECIST 1.1 evaluation has several limitations. It considers no more than 5 lesions in total, a maximum of 2 lesions per organ. Thus, the accurate quantification of the metastatic dissemination is likely underestimated. Additionally, atypical responses have been observed in the case of immunotherapy, such as pseudo-progression or hyper-progression (25, 26). Pseudo-progression led to the development of the iRECIST protocol, which requires a validation at least one month after progression to confirm if the progression is a real or pseudo progression (27). While the incidence rate for the phenomenon is low, this emphasizes the need for a prognostic biomarker to evaluate the response to immunotherapy. Moreover, Kuhl et al. have shown a discordance between different readers when assessing tumor response, if the chosen target lesions were different ( $\kappa = 0.58$ ; 95% CI: 0.54, 0.62) (28). Hence, we decided to extensively characterize the tumor burden characteristics and NLR in patients treated with anti-PD-(L)1. Our study aims at finding a score combining the comprehensive tumor volume and NLR, for an earlier evaluation of response to immunotherapy, in patients with MMRD tumors.

## Materials and methods

### Ethics statement

All patients included in this study received at least one previous line of anti-PD-(L)1 therapy. They were enrolled from November 2014 to October 2020 at Gustave Roussy and provided informed consent before enrollment in these studies. The study is reported in Health Data Hub.

### Patients' characteristics

This retrospective study enrolled 61 patients with metastatic cancer of various histological types treated with anti-PD-(L)1. The patients included were all screened for MMRD by the IHC staining to determine the presence/absence of the main MMR proteins (*MSH2*, *MSH6*, *PMS2*, *MLH1*). Two CT-scans were required for this cohort: a baseline preceding the immunotherapy and the other at first evaluation. The median time between baseline and first evaluation was 2.1 months (IQR: 1.6 – 2.6 months). Blood tests were also performed at the two

evaluations, where the absolute neutrophil count and the absolute lymphocyte count were assessed. The Neutrophil-to-Lymphocyte (NLR) ratio is defined as the ratio between absolute neutrophil count and absolute lymphocyte count.

## Radiological features & tumor burden

The CT-scans were analyzed by an expert radiologist who annotated all lesions in chest-abdomen-pelvis scans using an internal annotation software called Spyd. The annotations were performed with the following constraints: a) Precise freehand circumscribed annotation of all lesions in the body at their largest axial position (single slice), b) Lymph nodes were only considered a lesion if their smallest axis measured more than 10 mm, c) all pulmonary micronodules measuring more than 3 mm were annotated, d) Each annotation contained a label describing the location of the tumor. The tumor labels used were heart, lung, liver, lymph node, bone, spleen, kidney, carcinosis, ovary, pancreas, skin/soft tissue, adrenal, brain, muscle, bowels and other. The scans at both evaluations were annotated independently for each patient (Figure 1). These annotations allowed us to compute the shape features: Major Axis, Minor Axis and Mesh Surface, using Pyradiomics software (29). The surface is computed using the following formulas:  $A = \sum \frac{1}{2} Oa_i \times Ob_i$ , where  $Oa_i$  and  $Ob_i$  are edges of the  $i$ th triangle in the mesh, formed by vertices  $a_i$ ,  $b_i$  of the perimeter and the origin O. The Major Axis and Minor Axis are computed using the two smallest singular values on the ROI-enclosed ellipsoid:  $major = 4\sqrt{\lambda_{major}}$  and  $minor = 4\sqrt{\lambda_{minor}}$ . The approximate 3D volume for each metastasis was obtained with the following formula: Tumor volume =  $\frac{2}{3} \times \text{Surface} \times \text{Minor Axis}$ . The total tumor volume for each patient is computed using the sum of the approximate 3D volume of each metastasis.

The RECIST 1.1 evaluation done by another radiologist was also acquired, as well as the diameters of the target lesions using the RECIST 1.1 guidelines, and their sum was computed.

## Dynamic changes

To determine a prognostic biomarker, the parameters were evaluated at baseline. The variation of the parameters between baseline and first evaluation were calculated to determine predictive biomarkers for immunotherapy response. The variation was defined as:  $\text{variation} = \frac{\text{parameter}_{E1} - \text{parameter}_{BL}}{\text{parameter}_{BL}} \times 100$ , where E1 and BL stand for Evaluation 1 (first radiological evaluation) and baseline respectively. Only an increase (variation > 0%) or decrease (variation < 0%) of the parameters was evaluated in this study. Five parameters were studied at baseline and in variation: Sum of RECIST 1.1 target lesion diameters (RECIST), total tumor volume (Volume), total

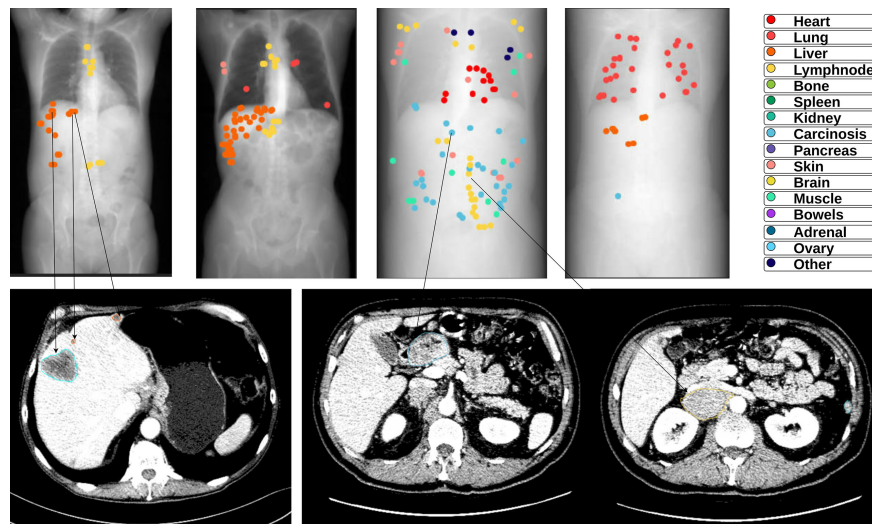


FIGURE 1

Examples of annotations on CT scans of different metastatic patients at baseline. The upper part contains an overview (CT Scout image) of the thorax-abdomen-pelvis CT scans that were fully annotated. Each colored dot in the overview is an annotation on its corresponding axial slice, the color indicates the tumor location or type (See Figure legend). The lower part shows a few examples of the tumor annotations on the axial slice.

number of lesions (Number Lesions), number of organs affected by lesions (Organs involved) and NLR.

## Statistical analysis

The main objective was to evaluate the biomarkers based on Overall survival (OS) and Progression-free survival (PFS). OS was defined as the time between the start of immunotherapy (first injection) and death from any cause. PFS was defined as the time between immunotherapy initiation and tumor progression based on RECIST 1.1 or death, whichever occurred first. The median and interquartile range (IQR) were used to report the distribution of variables. Spearman correlation was used to evaluate the dependency between variables. Variables were considered independent if their coefficients were lower than 0.8. When building our final score, only the independent variables were used. The Kaplan-Meier method was used for univariate survival analysis. The Cox model was used for multivariate data analysis, and the hazard ratio (HR) was computed for each covariate. The log-rank test was used to compare the survival distribution of the categories obtained from the univariate parameters, and to compute the p-value to assess the significance of the comparison. The cut-offs chosen for the binarization of continuous variables was the median approximated to the nearest integer for all parameters but NLR. The cut-off for NLR at baseline was 5 as previously described by others (30, 31). All the statistical analyses were performed using the Python language environment version 3.10, with the lifelines v0.25.7 (32), PyRadiomics v3.0.1 (29) and

pandas v1.1.5 (33) software packages. Figures were generated using Prism 9 (GraphPad, San Diego, CA, USA).

## Results

### Patients' characteristics

This retrospective study includes 61 patients treated with immunotherapy between 2015 and 2020, with MSI/MMRD tumors. Each patient had 2 CT scans that were evaluated. In total, 61,364 slices were analyzed to circumscribe 2120 lesions at their largest axial axis. Patients' baseline characteristics are listed in Table 1. The median age of all patients was 64. The patients had different primitive cancers, the most notable ones being Colorectal Cancer (42%) and Endometrial (21%). Patients were equally treated using either anti-PD-1 or anti-PD-(L)1. There was no significant difference in OS or PFS according to the therapy used (Supplementary Figure 1). The overall response rate of patients was 51%. The median time to progression and response were 3.2 (IQR: 1.5-9.4) and 3 (IQR: 2.0-6.5) months respectively. 34 patients were right censored for the OS, and 27 for the PFS.

### Baseline parameters

Five parameters extracted from the baseline CT-scan, namely the comprehensive tumor volume ( $\text{Volume}_{\text{baseline}}$ ), the number of organs affected at baseline ( $\text{Organ count}_{\text{baseline}}$ ),

TABLE 1 Baseline patients' characteristics.

Characteristics	No.	%
Total patients	61	100
Age		
Median	64	
IQR	52-70	
Sex		
Male	29	48
Female	32	52
Tumor Type		
Colorectal Cancer	26	43
Endometrial	13	21
Gastric	7	11
Small Intestine	5	8
Prostate	2	3
Ovarian	2	3
Esophagus	2	3
Pancreas	2	3
Adrenal Gland	1	2
Uterine cervix	1	2
Treatment		
Anti-PD-1	26	43
Anti-PD-L1	35	57
Responder		
Yes	31	51
No	30	49
Time to progression (months)	3.2	
Median	1.8-6.1	
95% CI median	3.0	
Time to response (months)	2.1-6.0	
Median		
95% CI median		

A patient is considered as a responder if the best response during treatment was either Partial or Complete. Stable disease patients were considered non-responders.

the NLR ( $NLR_{baseline}$ ), the total number of lesions ( $Number\ lesions_{baseline}$ ) and the RECIST diameters' sum ( $RECIST_{baseline}$ ), were analyzed and correlated with the OS and PFS in a univariate study. The median cut-offs were: for  $Volume_{baseline}$  90cm<sup>3</sup> (~5.6 cm in diameter); 3 organs for  $Organ\ count_{baseline}$ ;  $Number\ lesions_{baseline}$  was 10 lesions; and 5.5 cm for  $RECIST_{baseline}$ . The most significant variable was the  $Volume_{baseline}$  (OS p-value: 0.005, PFS p-value:<0.001) (Figure 2). The  $RECIST_{baseline}$  and  $NLR_{baseline}$  were not significant at this point of time. However, the variable significant at baseline, correlating to the OS and PFS was  $Number\ lesions_{baseline}$  (OS p-value: 0.032, PFS p-value: 0.009) (Supplementary Figure 2). The  $Organ\ count_{baseline}$  significantly correlated only to the OS (p-value: 0.005).

A Cox regression hazard model was fitted on the 5 parameters to analyze them in a multivariate setting. Two parameters were found to be significant for predicting the OS:  $Volume_{baseline}$  (HR=3.2, p-value=0.03) and the  $Organ\ count_{baseline}$  (HR=2.7, p-value=0.03) (Figure 3). The features were found to be independent

of each other according to the Spearman correlation test. Comparing the correlation among the variables,  $Volume_{baseline}$  and  $RECIST_{baseline}$  had the highest correlation coefficient (0.65).

## Variation parameters

The five parameters as at the baseline were also analyzed at the first evaluation. Their increase or decrease were then calculated in search of predictive biomarkers of response. The RECIST sum of diameters variation ( $RECIST_{variation}$ ) was highly correlated to both OS and PFS (OS p-value:<0.001, PFS p-value:<0.001) (Figure 4). The variation of the comprehensive tumor volume ( $Volume_{variation}$ ), the NLR variation ( $NLR_{variation}$ ) were also found to be significantly correlated to the OS (p-values: 0.006, and<0.001 respectively) and PFS (p-value:<0.001, and 0.007 respectively).

A Cox regression hazard model was fitted on the variation of the parameters to analyze them in a multivariate setting.



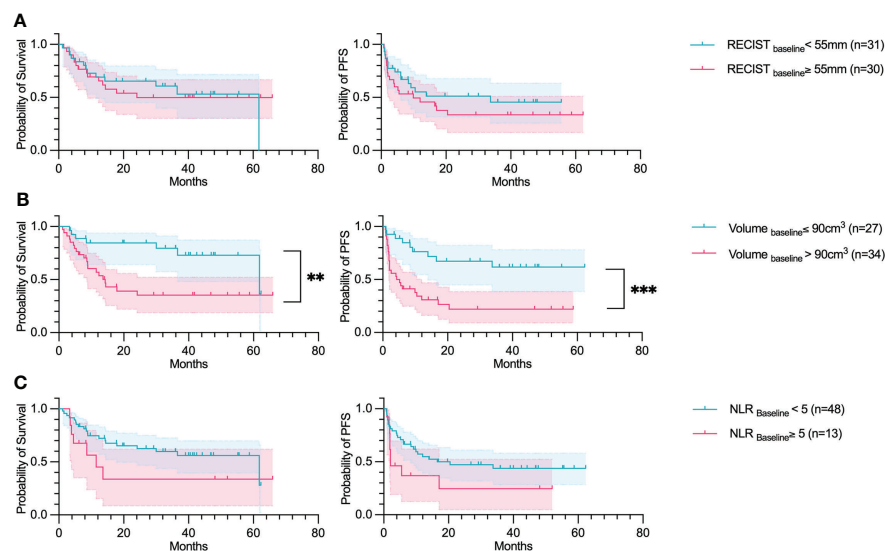


FIGURE 2

Volume<sub>baseline</sub> predicts OS and PFS. Overall survival and Progression-free survival plotted using a Kaplan Meier estimation with their respective confidence intervals (95%). The parameters studied are: (A) The sum of RECIST diameters (RECIST); (B) Total tumor volume (Volume); and (C) Neutrophil-to-lymphocyte ratio (NLR). For Kaplan–Meier estimation, tick marks represent data censored at the time of the last imaging assessment and statistical analyses were performed using Log-rank (Mantel–Cox) test. Symbol significance: \*  $p \leq 0.05$ ; \*\*  $p \leq 0.01$ ; \*\*\*  $p \leq 0.001$ , \*\*\*\*  $p \leq 0.0001$ .

Two parameters were found to be significant: The RECIST<sub>variation</sub> (HR=3.4, p-value=0.02) and NLR<sub>variation</sub> (HR=2.9, p-value=0.04) (Figure 5). None of the features were found to be correlated according to the Spearman correlation test. The features with the highest correlation coefficient were the tumor volume (Volume<sub>variation</sub>) and the increase in the number of organs affected (Organ count<sub>variation</sub>), with a coefficient of 0.52.

## Concordance score

A concordance score was computed for NLR<sub>variation</sub> and RECIST<sub>variation</sub>; as well as for NLR<sub>variation</sub> and Volume<sub>variation</sub>. A concordance score reflects a mutual increase, a mutual decrease, and a discordance in the two parameters. Both concordance scores were found to be significant, with the Volume<sub>variation</sub> and NLR<sub>variation</sub> found to be slightly more significant than RECIST<sub>variation</sub> and NLR<sub>variation</sub> ( $p < 0.05$  log-rank test between mutual decrease and discordance, corresponding to both OS and PFS) (Figure 6).

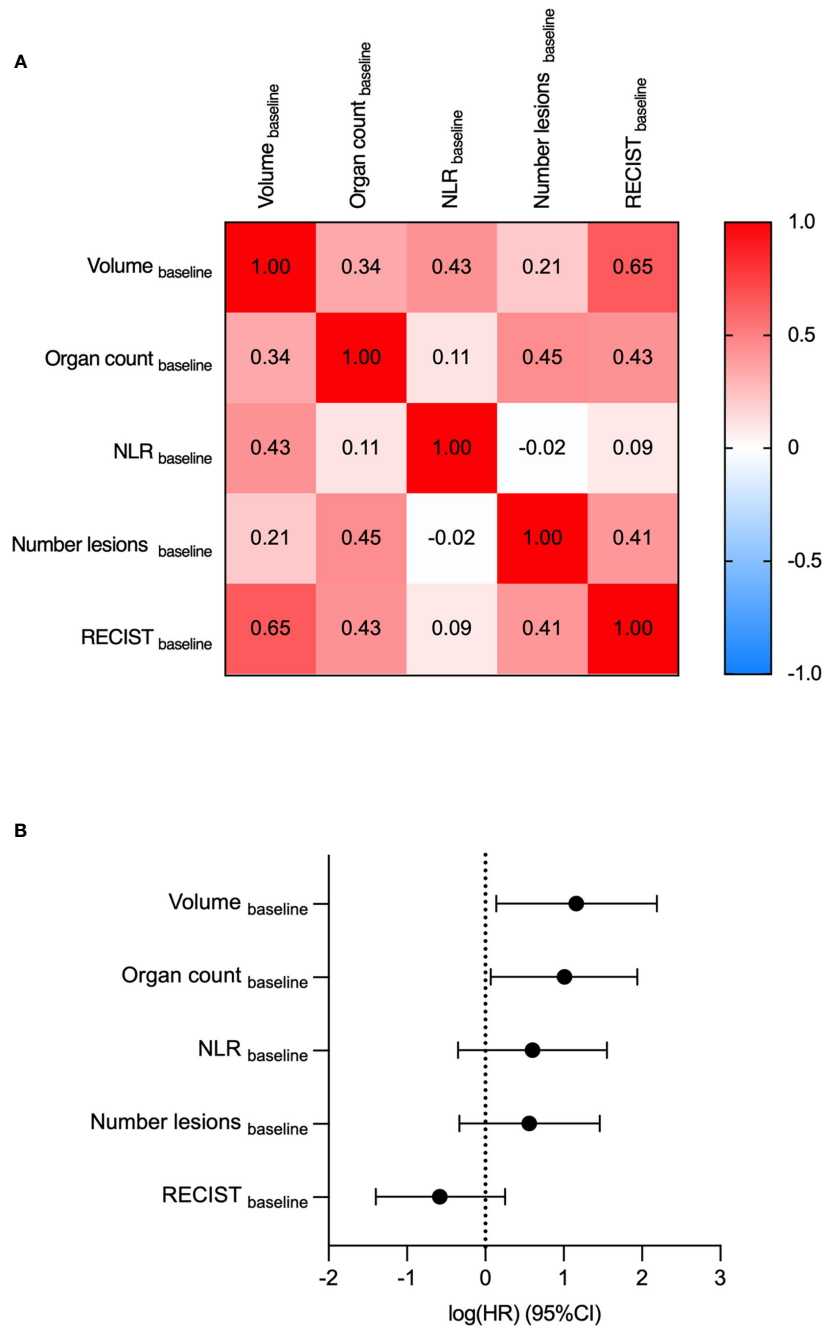
## Discussion

Understanding factors that contribute to ICB effectiveness is crucial to a broader application of these therapies. By investigating the biological and clinical parameters of the

study and gathering patients diagnosed with different histological MSI tumors treated with PD-(L)1, we found that Tumor Volume<sub>baseline</sub> predicts the outcome of anti-PD-(L)1 response (OS, p-value: 0.005, PFS, p-value:<0.001). We could thus consider to have much greater benefit of anti-PD-(L)1 treatment for patients in adjuvant setting with microscopic or no residual disease as compared to patients that had already received numerous lines of therapies (34).

Alternatively, the RECIST<sub>baseline</sub> was not a prognostic biomarker. Therefore, the accurate measure of metastatic spread would be important to predict anti-PD-(L)1 response. Whether RECIST<sub>baseline</sub> could be associated with ICB response still remains elusive given that some centers have also found that RECIST<sub>baseline</sub> was not a prognostic biomarker (35), while others found the opposite (36, 37). Thus, more studies are needed to assess the role of RECIST<sub>baseline</sub> as a predictive biomarker for ICB response. Furthermore, the RECIST choice of target lesions seems to suffer from reproducibility, as shown by Kuhl et al. (28) where 59% of the patients evaluated by three different radiologists had a discordance in the choice of the target lesions, resulting in different sums of diameters of five target lesions.

RECIST 1.1 criteria defines a progressive disease as an increase of 20% of the sum of the targeted lesions, a partial response as a decrease of 30% and a stable disease if none of the above (with the caveat of considering only the target lesions) (24). In this study, we chose to compare an increase or decrease



**FIGURE 3** Multivariate analyses determine Volume<sub>baseline</sub> and Organ count<sub>baseline</sub> as the most predictive variables for OS. Volume<sub>baseline</sub>, Organ count<sub>baseline</sub>, NLR<sub>baseline</sub>, Number of lesions<sub>baseline</sub> and RECIST<sub>baseline</sub> were compared by multivariate analyses. **(A)** The Spearman correlation coefficients of the five parameters. **(B)** Log-hazard ratio (HR) according to each covariate. Data are shown as HR (95% CI).

of the RECIST diameters (RECIST<sub>variation</sub>) to an increase or decrease of the global volume (Volume<sub>variation</sub>), instead of a comparison to the RECIST 1.1 thresholds. Three key reasons justified this choice. First, and foremost, the median time of

response or progression according to the RECIST 1.1 criteria was 3 months, while the time of the first evaluation was 2 months. Thus, using RECIST 1.1 criteria during the first evaluation was likely too restrictive as several patients would be considered with

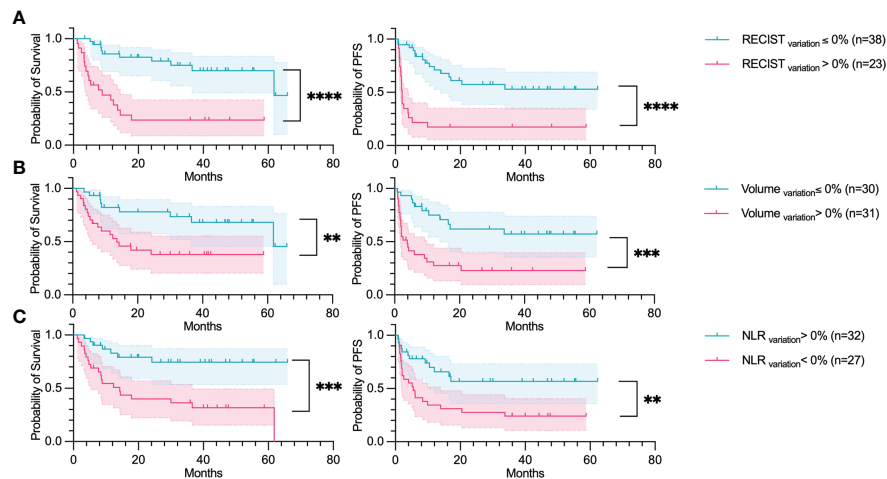


FIGURE 4

RECIST<sub>variation</sub>, Volume<sub>variation</sub> and NLR<sub>variation</sub> predicts OS and PFS. Overall survival and Progression-free survival plotted using a Kaplan-Meier estimation with their respective confidence intervals (95%). The parameters studied are: (A) The increase in the sum of RECIST diameters (RECIST); (B) Increase of total tumor volume (Volume); and (C) Increase of neutrophil-to-lymphocyte ratio (NLR). For Kaplan-Meier estimation, tick marks represent data censored at the time of the last imaging assessment and statistical analyses were performed using Log-rank (Mantel-Cox) test. Symbol significance: \*  $p \leq 0.05$ ; \*\*  $p \leq 0.01$ ; \*\*\*  $p \leq 0.001$ , \*\*\*\*  $p \leq 0.0001$ .

a stable disease while they could respond later. Second, while RECIST criteria had defined cut-offs to apply in the 1D setting, there is no consensus to define a response or a progression according to a 3D setting yet. Schiavon G. et al. examine this issue by mathematically transposing the RECIST thresholds to 3D (38). The concern of this approach is that the RECIST 1.1 only considers 5 lesions, whilst the total volume considers all the tumors in the body, which would imply that such a method would likely underestimate the total volume progression of all tumors. The Quantitative Imaging Biomarkers Alliance (QIBA) claims that a true change in lung tumor volume occurs at a specific threshold given a certain size. This study suggests that site-specific analysis should be performed to assess the repeatability and change detectability of tumor volume measurements (39). Third, since one of the key aim of this study was to compare the ability of RECIST and Volume to predict PFS/OS, we wanted to find a common threshold for both with a biological relevance. Both RECIST<sub>variation</sub> and Volume<sub>variation</sub> were predictive factors for PFS and OS, which is an argument in favor of this comparison.

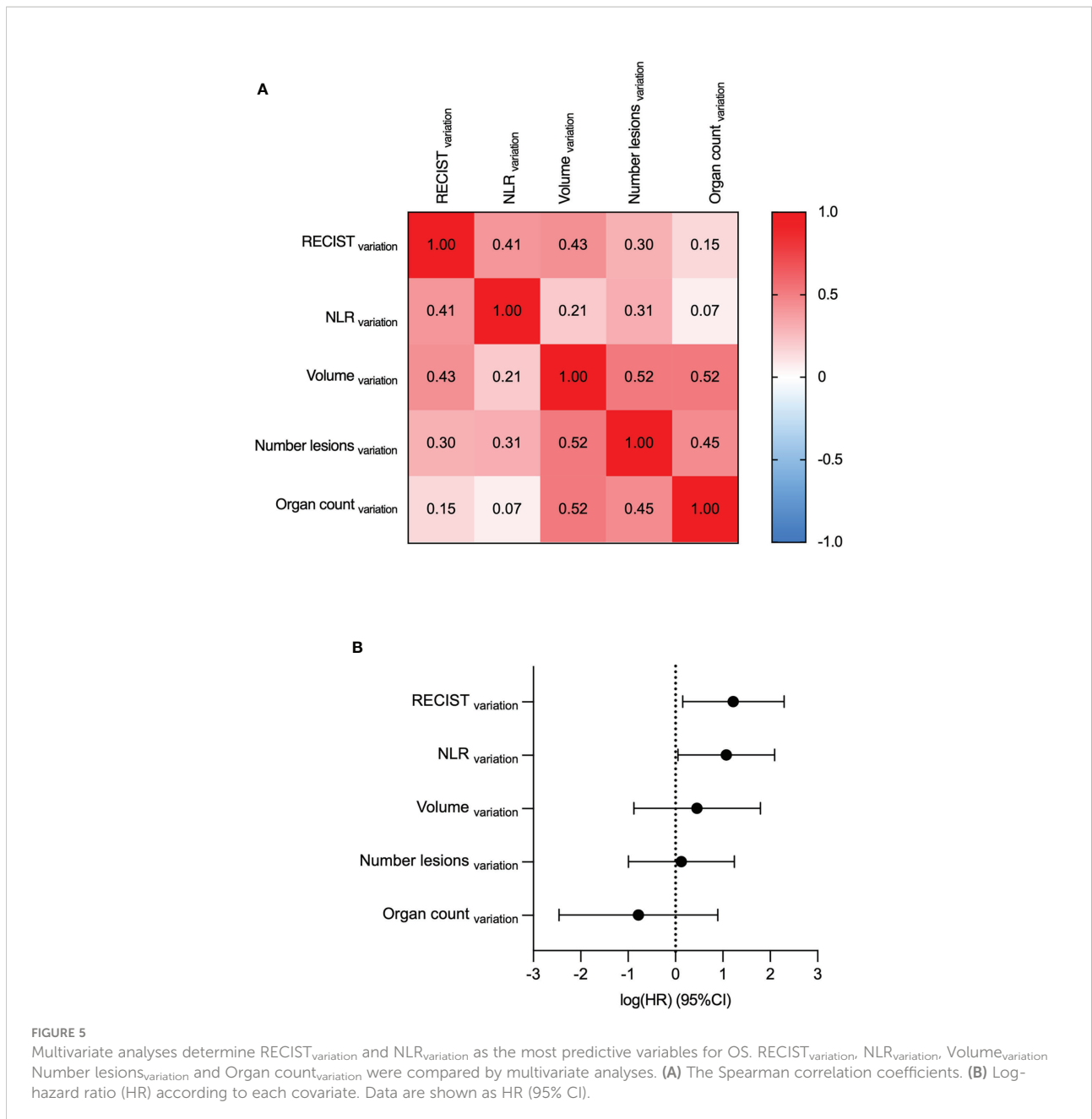
Interestingly, Tumor Volume<sub>variation</sub> did not show higher performances as compared to RECIST<sub>variation</sub> suggesting that the extensive work of measuring all the lesions might be only necessary at baseline. However, we believe that Tumor Volume<sub>variation</sub> assessment could be critical during treatment. Since the PFS is defined by the RECIST 1.1 criteria, the comparison between Tumor Volume<sub>variation</sub> and RECIST<sub>variation</sub> should only be done according to the OS. While Tumor Volume<sub>variation</sub> accounts for non-target and

new lesions, RECIST<sub>variation</sub> does not. Interestingly, these lesions had been described to be at least as important as the target lesions determined by RECIST 1.1 in the occurrence of progressive disease (40, 41). Therefore, Volume<sub>variation</sub> likely gives a more robust criteria for defining progression.

As previously reported in Nebot-Bral et al., NLR<sub>baseline</sub> is highly variable across MSI tumors and should not be used as a predictive biomarker of ICB response (16). In this cohort, we confirmed NLR<sub>variation</sub> as an early predictive biomarker. NLR<sub>variation</sub>, Volume<sub>variation</sub> and RECIST<sub>variation</sub> were not correlated. Consequently, these parameters should be used together to predict more accurately the outcome of anti-PD-(L)1 response shortly after treatment initiation. The concordance score is an easy, cost-effective way to combine clinical and biologic parameters for each patient.

The results of the phase II CheckMate-142 trial indicated that Nivolumab (anti-PD-1 monoclonal antibodies) plus Ipilimumab (anti-CTLA-4 monoclonal antibodies) achieved higher response rates than previously reported for nivolumab (55% vs. 31% ORR) in patients with pretreated MSI-H/MMRD metastatic CRC (42). Given that Volume<sub>baseline</sub> and concordance score could be used as a prognostic and predictive biomarker of anti-PD-(L)1 therapy respectively for patients with MSI tumors, we could propose the combination of anti-PD-(L)1 + anti CTLA-4 either for patients with Volume<sub>baseline</sub> > 90cm<sup>3</sup> or patients that have an early increase of the concordance score. These results warrant further investigations on larger prospective cohorts.





Specific sites of the disease may hold unique mechanisms of resistance. Liver metastases have been associated with worse prognosis as opposed to lung metastases that are correlated with improved overall survival (43, 44). However, we did not find any correlation between the anatomical locations of metastases and ICB response. This could be due to the high heterogeneity of the cohort, with more than 10 different metastatic sites for 61 patients included in the study. In line with this, the hypothesis of resistance mechanisms being organ specific or texture parameters of the lesions discriminating response vs relapse, needs to be explored. Therefore, the use of radiomics to extract

radiographic characteristics from the tumor image to produce statistics related to the heterogeneity or contrast of the tumor region, coupled with the predictive power of artificial intelligence (AI) algorithms is proposed as a new novel non-invasive biomarker for immunotherapy response (41–43).

This study has inherent limitations, including those that arise due to its retrospective nature and the performance being a single center study. Multi-center prospective cohort studies with larger sample sizes are warranted in the future. In addition, the NLR can be influenced by multiple factors, such as infection or drug uptake, which were not assessed in this study. Lastly, the

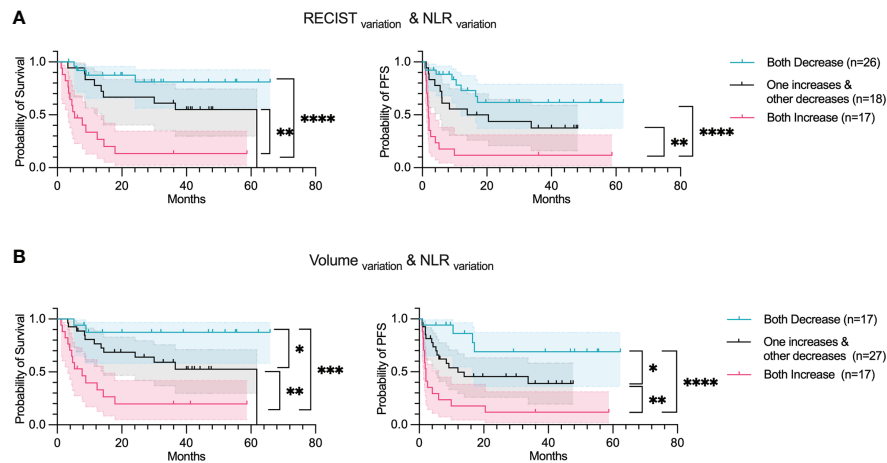


FIGURE 6

Concordance score predicts OS and PFS. Overall survival and Progression-free survival plotted using a Kaplan-Meier estimation with their respective confidence intervals (95%). The parameters studied are: **(A)** Concordance score using  $RECIST_{variation}$  &  $NLR_{variation}$ . **(B)** Concordance score using Tumor volume<sub>variation</sub> &  $NLR_{variation}$ . For Kaplan-Meier estimation, tick marks represent data censored at the time of the last imaging assessment and statistical analyses were performed using Log-rank (Mantel-Cox) test. Symbol significance: \*  $p \leq 0.05$ ; \*\*  $p \leq 0.01$ ; \*\*\*  $\leq 0.001$ , \*\*\*\*  $\leq 0.0001$ .

volume of each tumor was approximated. Altogether, our results suggest that, for patients with MSI tumors, the use of tumor volume at baseline ( $Volume_{baseline}$ ) and the concomitant evaluation of  $NLR_{variation}$  and  $RECIST_{variation}$  or  $NLR_{variation}$  and  $Volume_{variation}$  earlier after treatment initiation predicts the outcome of anti-PD-(L)1 even before classical RECIST 1.1 evaluation of response/resistance.

## Data availability statement

The original contributions presented in the study are included in the article/[Supplementary Material](#). Further inquiries can be directed to the corresponding authors.

## Ethics statement

The studies involving human participants were reviewed and approved by Gustave Roussy's ethics committee. The patients/participants provided their written informed consent to participate in this study.

## Author contributions

Conceptualization: AH, NL, LN-B, and YB. Methodology: LN-B, YB, LL. Investigation: AH and LN-B. Resources: MK, LL, and LN-B. Funding acquisition: AH and NL. Project administration: AH, NL, HT, and P-HC. Writing – original

draft: LN-B, YB, and LL. Writing – review & editing: YB, LN-B, LL, MK, CD, SA, P-HC, HT, PK, NC, NL, and AH. All authors contributed to the article and approved the submitted version.

## Funding

This work was funded by Gustave Roussy Cancer Campus, Centre National de la Recherche Scientifique (CNRS), SIRIC SOCRATE INCa-DGOS-INSERM\_6043, SIRIC SOCRATE 2.0 INCa-DGOS-INSERM\_12551, and La Ligue Nationale Contre le Cancer – Equipe labellisée EL2018\_Kannouche. LN-B received funding from Philanthropia Foundation - Lombard Odier and la Ligue Nationale Contre le Cancer.

## Acknowledgments

This work was supported by DATAIA institute, Université Paris-Saclay, which provided the funding for the employment of YB and LL.

## Conflict of interest

NC reports grants from Cytune Pharma, grants from BMS, grants from SANOFI, personal fees from AstraZeneca France, outside the submitted work.

The remaining authors declare that the research was conducted in the absence of any commercial or financial

relationships that could be construed as a potential conflict of interest.

## Publisher's note

All claims expressed in this article are solely those of the authors and do not necessarily represent those of their affiliated organizations, or those of the publisher, the editors and the reviewers. Any product that may be evaluated in this article, or

claim that may be made by its manufacturer, is not guaranteed or endorsed by the publisher.

## Supplementary material

The Supplementary Material for this article can be found online at: <https://www.frontiersin.org/articles/10.3389/fonc.2022.982790/full#supplementary-material>

## References

- Chen S, Zhang Z, Zheng X, Tao H, Zhang S, Ma J, et al. Response efficacy of PD-1 and PD-L1 inhibitors in clinical trials: A systematic review and meta-analysis. *Front Oncol* (2021) 11. doi: 10.3389/fonc.2021.562315
- Sun L, Zhang L, Yu J, Zhang Y, Pang X, Ma C, et al. Clinical efficacy and safety of anti-PD-1/PD-L1 inhibitors for the treatment of advanced or metastatic cancer: a systematic review and meta-analysis. *Sci Rep* (2020) 10(1):2083. doi: 10.1038/s41598-020-58674-4
- Zhao B, Zhao H, Zhao J. Efficacy of PD-1/PD-L1 blockade monotherapy in clinical trials. *Ther Adv Med Oncol* (2020) 12:1758835920937612. doi: 10.1177/1758835920937612
- Debele TA, Yeh CF, Su WP. Cancer immunotherapy and application of nanoparticles in cancers immunotherapy as the delivery of immunotherapeutic agents and as the immunomodulators. *Cancers* (2020) 12(12):3773. doi: 10.3390/cancers12123773
- Overman MJ, McDermott R, Leach JL, Lonardi S, Lenz HJ, Morse MA, et al. Nivolumab in patients with metastatic DNA mismatch repair-deficient or microsatellite instability-high colorectal cancer (CheckMate 142): an open-label, multicentre, phase 2 study. *Lancet Oncol* (2017) 18(9):1182–91. doi: 10.1016/S1470-2045(17)30422-9
- Kim JH, Kim SY, Baek JY, Cha YJ, Ahn JB, Kim HS, et al. A phase II study of avelumab monotherapy in patients with mismatch repair-deficient/microsatellite instability-high or POLE-mutated metastatic or unresectable colorectal cancer. *Cancer Res Treat* (2020) 52(4):1135–44. doi: 10.4143/crt.2020.218
- Le DT, Durham JN, Smith KN, Wang H, Bartlett BR, Aulakh LK, et al. Mismatch-repair deficiency predicts response of solid tumors to PD-1 blockade. *Science* (2017) 357(6349):409–13. eaan6733. doi: 10.1126/science.aan6733
- Chalmers ZR, Connelly CF, Fabrizio D, Gay L, Ali SM, Ennis R, et al. Analysis of 100,000 human cancer genomes reveals the landscape of tumor mutational burden. *Genome Med* (2017) 9:34. doi: 10.1186/s13073-017-0424-2
- The Cancer Genome Atlas Network. Comprehensive molecular characterization of human colon and rectal cancer. *Nature* (2012) 487(7407):330–7. doi: 10.1038/nature11252
- Nebot-Bral L, Brandao D, Verlingue L, Rouleau E, Caron O, Despras E, et al. Hypermutated tumours in the era of immunotherapy: The paradigm of personalised medicine. *Eur J Cancer* (2017) 84(Supplement C):290–303. doi: 10.1016/j.ejca.2017.07.026
- Antill Y, Kok PS, Robledo K, Yip S, Cummins M, Smith D, et al. Clinical activity of durvalumab for patients with advanced mismatch repair-deficient and repair-proficient endometrial cancer. a nonrandomized phase 2 clinical trial. *J Immunother Cancer* (2021) 9(6). doi: 10.1136/jitc-2020-002255
- Konstantinopoulos PA, Luo W, Liu JF, Gulhan DC, Krasner C, Ishizuka JJ, et al. Phase II study of avelumab in patients with mismatch repair deficient and mismatch repair proficient Recurrent/Persistent endometrial cancer. *J Clin Oncol Off J Am Soc Clin Oncol* (2019) 37(30):2786–94. doi: 10.1200/JCO.19.01021
- André T, Shiu KK, Kim TW, Jensen BV, Jensen LH, Punt C, et al. Pembrolizumab in Microsatellite-Instability-high advanced colorectal cancer. *N Engl J Med* (2020) 383(23):2207–18. doi: 10.1056/NEJMoa2017699
- Azad NS, Gray RJ, Overman MJ, Schoenfeld JD, Mitchell EP, Zwiebel JA, et al. Nivolumab is effective in mismatch repair-deficient noncolorectal cancers: Results from arm Z1D-a subprotocol of the NCI-MATCH (EAY131) study. *J Clin Oncol Off J Am Soc Clin Oncol* (2019) 38(3):214–22. doi: 10.1200/JCO.19.00818
- Marabelle A, Le DT, Ascierto PA, Di Giacomo AM, De Jesus-Acosta A, Delord JP, et al. Efficacy of pembrolizumab in patients with noncolorectal high microsatellite Instability/Mismatch repair-deficient cancer: Results from the phase II KEYNOTE-158 study. *J Clin Oncol* (2019) 38(1):1–10. doi: 10.1200/JCO.19.02105
- Nebot-Bral L, Hollebecque A, Yurchenko AA, de Forceville L, Danjou M, Jouniaux JM, et al. Overcoming resistance to  $\alpha$ PD-1 of MMR-deficient tumors with high tumor-induced neutrophils levels by combination of  $\alpha$ CTLA-4 and  $\alpha$ PD-1 blockers. *J Immunother Cancer* (2022) 10(7):e005059. doi: 10.1136/jitc-2022-005059
- Bai R, Lv Z, Xu D, Cui J. Predictive biomarkers for cancer immunotherapy with immune checkpoint inhibitors. *biomark Res* (2020) 8(1):34. doi: 10.1186/s40364-020-00209-0
- Havel JJ, Chowell D, Chan TA. The evolving landscape of biomarkers for checkpoint inhibitor immunotherapy. *Nat Rev Cancer* (2019) 19(3):133–50. doi: 10.1038/s41568-019-0116-x
- Charoentong P, Finotello F, Angelova M, Mayer C, Efremova M, Rieder D, et al. Pan-cancer immunogenomic analyses reveal genotype-immunophenotype relationships and predictors of response to checkpoint blockade. *Cell Rep* (2017) 18(1):248–62. doi: 10.1016/j.celrep.2016.12.019
- Chen DS, Mellman I. Elements of cancer immunity and the cancer-immune set point. *Nature* (2017) 541(7637):321–30. doi: 10.1038/nature21349
- Schalper KA, Carleton M, Zhou M, Chen T, Feng Y, Huang SP, et al. Elevated serum interleukin-8 is associated with enhanced intratumor neutrophils and reduced clinical benefit of immune-checkpoint inhibitors. *Nat Med* (2020) 26(5):688–92. doi: 10.1038/s41591-020-0856-x
- Gopalakrishnan V, Spencer CN, Nezi L, Reuben A, Andrews MC, Karpinetz TV, et al. Gut microbiome modulates response to anti-PD-1 immunotherapy in melanoma patients. *Science* (2018) 359(6371):97–103. doi: 10.1126/science.aan4236
- Dall'Olio FG, Marabelle A, Caramella C, Garcia C, Aldea M, Chaput N, et al. Tumour burden and efficacy of immune-checkpoint inhibitors. *Nat Rev Clin Oncol* (2021), 1–16. doi: 10.1038/s41571-021-00564-3
- Eisenhauer EA, Therasse P, Bogaerts J, Schwartz LH, Sargent D, Ford R, et al. New response evaluation criteria in solid tumours: Revised RECIST guideline (version 1.1). *Eur J Cancer* (2009) 45(2):228–47. doi: 10.1016/j.ejca.2008.10.026
- Champiat S, Derclé L, Ammari S, Massard C, Hollebecque A, Postel-Vinay S, et al. Hyperprogressive disease is a new pattern of progression in cancer patients treated by anti-PD-1/PD-L1. *Clin Cancer Res Off J Am Assoc Cancer Res* (2017) 23(8):1920–8. doi: 10.1158/1078-0432.CCR-16-1741
- Ferrara R, Caramella C, Besse B, Champiat S. Pseudoprogression in non-small cell lung cancer upon immunotherapy: Few drops in the ocean? *J Thorac Oncol Off Publ Int Assoc Study Lung Cancer* (2019) 14(3):328–31. doi: 10.1016/j.jtho.2018.12.011
- Seymour L, Bogaerts J, Perrone A, Ford R, Schwartz LH, Mandrekas S, et al. iRECIST: guidelines for response criteria for use in trials testing immunotherapeutics. *Lancet Oncol* (2017) 18(3):e143–52. doi: 10.1016/S1470-2045(17)30074-8
- Kuhl CK, Alparslan Y, Schmoee J, Sequeira B, Keulers A, Brümmendorf TH, et al. Validity of RECIST version 1.1 for response assessment in metastatic cancer: A prospective, multireader study. *Radiology* (2019) 290(2):349–56. doi: 10.1148/radiol.2018180648
- van Griethuysen JJM, Fedorov A, Parmar C, Hosny A, Aucoin N, Narayan V, et al. Computational radiomics system to decode the radiographic phenotype. *Cancer Res* (2017) 77(21):e104–7. doi: 10.1158/0008-5472.CAN-17-0339
- Capone M, Giannarelli D, Mallardo D, Madonna G, Festino L, Grimaldi AM, et al. Baseline neutrophil-to-lymphocyte ratio (NLR) and derived NLR could

predict overall survival in patients with advanced melanoma treated with nivolumab. *J Immunother Cancer*. (2018) 6(1):74. doi: 10.1186/s40425-018-0383-1

31. Ferrucci PF, Gandini S, Battaglia A, Alfieri S, Di Giacomo AM, Giannarelli D, et al. Baseline neutrophil-to-lymphocyte ratio is associated with outcome of ipilimumab-treated metastatic melanoma patients. *Br J Cancer*. (2015) 112(12):1904–10. doi: 10.1038/bjc.2015.180
32. Davidson-Pilon C. *Lifelines, survival analysis in Python*. Zenodo (2022) 4(40):1317. Available at: <https://zenodo.org/record/6359609>. doi: 10.21105/joss.01317
33. Reback J, McKinney W, jbrockmendel, Bossche Jvd, Augspurger T, Cloud P, et al. *Pandas-dev/pandas: Pandas 1.0.3*. Zenodo (2020). Available at: <https://zenodo.org/record/3715232>.
34. ESMO. *Moving immunotherapy to the adjuvant setting*. Available at: <https://www.esmo.org/meetings/past-meetings/esmo-immuno-oncology-congress-2017/educational-articles/Moving-Immunotherapy-to-the-Adjuvant-Setting>.
35. Lenci E, Marcantognini G, Cognigni V, Lupi A, Rinaldi S, Cantini L, et al. Tumor burden as possible biomarker of outcome in advanced NSCLC patients treated with immunotherapy: a single center, retrospective, real-world analysis. *Explor Target Anti-Tumor Ther* (2021) 2(3):227–39. doi: 10.37349/etat.2021.00043
36. Joseph RW, Elassaiss-Schaap J, Kefford R, Hwu WJ, Wolchok JD, Joshua AM, et al. Baseline tumor size is an independent prognostic factor for overall survival in patients with melanoma treated with pembrolizumab. *Clin Cancer Res* (2018) 24(20):4960–7. doi: 10.1158/1078-0432.CCR-17-2386
37. Katsurada M, Nagano T, Tachihara M, Kiriu T, Furukawa K, Koyama K, et al. Baseline tumor size as a predictive and prognostic factor of immune checkpoint inhibitor therapy for non-small cell lung cancer. *Anticancer Res* (2019) 39(2):815–25. doi: 10.21873/anticancer.13180
38. Schiavon G, Ruggiero A, Schöffski P, van der Holt B, Bekers DJ, Eechoute K, et al. Tumor volume as an alternative response measurement for imatinib treated GIST patients. *PLoS One* (2012) 7(11):e48372. doi: 10.1371/journal.pone.0048372
39. *QIBACTVol\_TumorVolumeChange(2022)-20220721.pdf*. Available at: [https://qibawiki.rsna.org/images/b/ba/QIBACTVol\\_TumorVolumeChange%282022%29-20220721.pdf](https://qibawiki.rsna.org/images/b/ba/QIBACTVol_TumorVolumeChange%282022%29-20220721.pdf).
40. Litière S, de Vries EGE, Seymour L, Sargent D, Shankar L, Bogaerts J, et al. The components of progression as explanatory variables for overall survival in the response evaluation criteria in solid tumours 1.1 database. *Eur J Cancer Oxf Engl* 1990. (2014) 50(10):1847–53. doi: 10.1016/j.ejca.2014.03.014
41. Fournier L, de Geus-Oei LF, Regge D, Oprea-Lager DE, D’Anastasi M, Bidaut L, et al. Twenty years on: RECIST as a biomarker of response in solid tumours an EORTC imaging group - ESOI joint paper. *Front Oncol* (2021) 11:800547. doi: 10.3389/fonc.2021.800547
42. Overman MJ, Lonardi S, Wong KYM, Lenz HJ, Gelsomino F, Aglietta M, et al. Durable clinical benefit with nivolumab plus ipilimumab in DNA mismatch repair-Deficient/Microsatellite instability-high metastatic colorectal cancer. *J Clin Oncol Off J Am Soc Clin Oncol* (2018) 36(8):773–9. doi: 10.1200/JCO.2017.76.9901
43. Pires da Silva I, Lo S, Quek C, Gonzalez M, Carlino MS, Long GV, et al. Site-specific response patterns, pseudoprogression, and acquired resistance in patients with melanoma treated with ipilimumab combined with anti-PD-1 therapy. *Cancer*. (2020) 126(1):86–97. doi: 10.1002/cncr.32522
44. Yu J, Green MD, Li S, Sun Y, Journey SN, Choi JE, et al. Liver metastasis restrains immunotherapy efficacy via macrophage-mediated T cell elimination. *Nat Med* (2021) 27:152–64. doi: 10.1038/s41591-020-1131-x