

[PICTURES IN CLINICAL MEDICINE]

Gastric Ischemia Diagnosed by Contrast-enhanced Computed Tomography

Kazuhiro Yamamoto¹, Jun Nishikawa², Koichi Hamabe¹ and Taro Takami¹

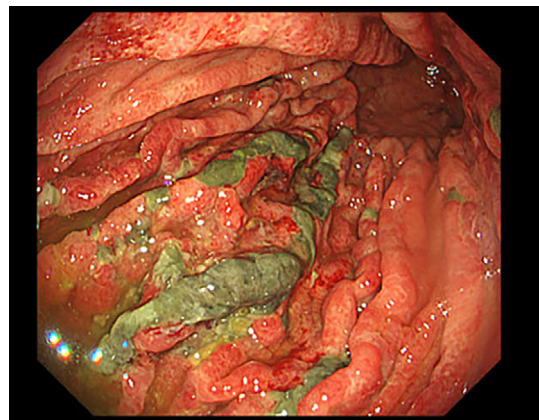
Key words: gastric ischemia, contrast-enhanced CT

(Intern Med 61: 3143-3144, 2022)

(DOI: 10.2169/internalmedicine.9093-21)



Picture 1.



Picture 2.



Picture 3.

(CT) showed the absence of contrast enhancement of the mucosa at the greater curvature of the gastric body and diffuse thickening of the gastric wall (Picture 1). Esophagogastroduodenoscopy revealed multiple gastric erosions and pale inflamed mucosa in the greater curvature of the gastric body (Picture 2). We diagnosed her with gastric ischemia and continued treatment for septic shock, administering an intravenous proton pump inhibitor. Contrast-enhanced CT three days after the onset showed the recovery of the blood flow and improvement of the wall thickening in the stomach (Picture 3). Gastric ischemia is uncommon because of the rich collateral blood supply to the stomach (1, 2). Endoscopy and CT play an important role in the diagnosis of gastric ischemia (3).

The authors state that they have no Conflict of Interest (COI).

An 84-year-old woman was receiving chemotherapy for small-cell lung cancer with liver metastasis. She developed post-chemotherapy febrile neutropenia and then presented with systemic hypoperfusion due to septic shock and gastrointestinal bleeding. Contrast-enhanced computed tomography

¹Department of Gastroenterology and Hepatology, Yamaguchi University Graduate School of Medicine, Japan and ²Faculty of Laboratory Science, Yamaguchi University Graduate School of Medicine, Japan

Received: November 28, 2021; Accepted: February 2, 2022; Advance Publication by J-STAGE: March 12, 2022

Correspondence to Dr. Jun Nishikawa, junnis@yamaguchi-u.ac.jp

References

1. Tang SJ, Daram SR, Wu R, Bhajjee F. Pathogenesis, diagnosis, and management of gastric ischemia. *Clin Gastroenterol Hepatol* **12**: 246-252, 2014.
2. Herman J, Chavalitdhamrong D, Jensen DM, Cortina G, Manuyakorn A, Jutabha R. The significance of gastric and duodenal histological ischemia reported on endoscopic biopsy. *Endoscopy* **43**: 365-368, 2011.
3. Sharma A, Mukewar S, Chari ST, Wong Kee, Song LM. Clinical features and outcomes of gastric ischemia. *Dig Dis Sci* **62**: 3550-3556, 2017.

The Internal Medicine is an Open Access journal distributed under the Creative Commons Attribution-NonCommercial-NoDerivatives 4.0 International License. To view the details of this license, please visit (<https://creativecommons.org/licenses/by-nc-nd/4.0/>).

© 2022 The Japanese Society of Internal Medicine
Intern Med 61: 3143-3144, 2022