



OPEN ACCESS

EDITED BY

Jinfeng Xu,
The University of Hong Kong,
Hong Kong SAR, China

REVIEWED BY

Li Yin,
University of Virginia, United States
Philip Dusing,
University Hospital Bonn, Germany

*CORRESPONDENCE

Laisel Martinez
lmartinez6@med.miami.edu

SPECIALTY SECTION

This article was submitted to
Cardiovascular Therapeutics,
a section of the journal
Frontiers in Cardiovascular Medicine

RECEIVED 27 July 2022

ACCEPTED 10 October 2022

PUBLISHED 07 November 2022

CITATION

Labissiere X, Zigmund ZM, Challa A,
Montoya C, Manzur-Pineda K,
Abraham A, Tabbara M, Salama A,
Pan Y, Salman LH, Yang X,
Vazquez-Padron RI and Martinez L
(2022) Vein morphometry
in end-stage kidney disease: Teasing
out the contribution of age,
comorbidities, and vintage to chronic
wall remodeling.
Front. Cardiovasc. Med. 9:1005030.
doi: 10.3389/fcvm.2022.1005030

COPYRIGHT

© 2022 Labissiere, Zigmund, Challa,
Montoya, Manzur-Pineda, Abraham,
Tabbara, Salama, Pan, Salman, Yang,
Vazquez-Padron and Martinez. This is
an open-access article distributed
under the terms of the [Creative
Commons Attribution License \(CC BY\)](#).
The use, distribution or reproduction in
other forums is permitted, provided
the original author(s) and the copyright
owner(s) are credited and that the
original publication in this journal is
cited, in accordance with accepted
academic practice. No use, distribution
or reproduction is permitted which
does not comply with these terms.

Vein morphometry in end-stage kidney disease: Teasing out the contribution of age, comorbidities, and vintage to chronic wall remodeling

Xochilt Labissiere¹, Zachary M. Zigmund², Akshara Challa¹,
Christopher Montoya¹, Karen Manzur-Pineda¹,
Amalia Abraham¹, Marwan Tabbara¹, Alghidak Salama¹,
Yue Pan³, Loay H. Salman⁴, Xiaofeng Yang⁵,
Roberto I. Vazquez-Padron^{1,2} and Laisel Martinez^{1*}

¹DeWitt Daughtry Family Department of Surgery, Leonard M. Miller School of Medicine, University of Miami, Miami, FL, United States, ²Bruce W. Carter Veterans Affairs Medical Center, Miami, FL, United States, ³Department of Public Health Sciences, Leonard M. Miller School of Medicine, University of Miami, Miami, FL, United States, ⁴Division of Nephrology, Albany Medical College, Albany, NY, United States, ⁵Lewis Katz School of Medicine, Temple University, Philadelphia, PA, United States

Background: Chronic kidney disease (CKD) is a highly comorbid condition with significant effects on vascular health and remodeling. Upper extremity veins are important in end-stage kidney disease (ESKD) due to their potential use to create vascular accesses. However, unlike arteries, the contribution of CKD-associated factors to the chronic remodeling of veins has been barely studied.

Methods: We measured morphometric parameters in 315 upper extremity veins, 131 (85% basilic) from stage 5 CKD/ESKD patients and 184 (89% basilic) from non-CKD organ donors. Associations of demographic and clinical characteristics with intimal hyperplasia (IH) and medial fibrosis were evaluated using multivariate regression models.

Results: The study cohort included 33% females, 30% blacks, 32% Hispanics, and 37% whites. Over 60% had hypertension, and 25% had diabetes independent of CKD status. Among kidney disease participants, 26% had stage 5 CKD, while 22 and 52% had ESKD with and without history of a previous arteriovenous fistula/graft (AVF/AVG), respectively. Intimal hyperplasia was associated with older age ($\beta = 0.13$ per year, confidence interval [CI] = 0.002–0.26), dialysis vintage > 12 months ($\beta = 0.22$, CI = 0.09–0.35), and previous AVF/AVG creation ($\beta = 0.19$, CI = 0.06–0.32). Upper quartile values of IH were significantly associated with diabetes (odds ratio [OR] = 2.02, CI = 1.08–3.80), which demonstrated an additive effect with previous AVF/AVG history and longer vintage in exacerbating IH. Medial fibrosis also increased as a function of age ($\beta = 0.17$, CI = 0.04–0.30) and among patients with diabetes

($\beta = 0.15$, CI = 0.03–0.28). Age was the predominant factor predicting upper quartile values of fibrosis (OR = 1.03 per year, CI = 1.01–1.05) independent of other comorbidities.

Conclusion: Age and diabetes are the most important risk factors for chronic development of venous IH and fibrosis independent of CKD status. Among kidney disease patients, longer dialysis vintage, and history of a previous AVF/AVG are strong predictors of IH.

KEYWORDS

intimal hyperplasia (IH), fibrosis, chronic kidney disease, diabetes, vascular aging

Introduction

Upper extremity vessels are the preferred sites for creation of hemodialysis accesses. Traditional and non-traditional risk factors in chronic kidney disease (CKD) are thought to induce structural changes that lead to wall stiffness and impair vasoactivity, affecting the capacity of vessels to remodel and mature after vascular access creation (1). Unfortunately, most of the mechanisms behind those changes are extrapolated from the arterial system (2–4), despite differences in hemodynamics and structure between arteries and veins. The impact of CKD on chronic remodeling of upper extremity veins remains understudied.

Intimal hyperplasia (IH) and imbalanced extracellular matrix (ECM) remodeling are implicated in the origin and progression of vascular diseases, and in postoperative complications after vascular surgeries (2, 5–10). Concentric development of IH and moderate degree of wall fibrosis are frequently found in veins of CKD patients at the time of hemodialysis access creation (8, 11, 12). Despite mild or no associations of pre-access vein morphometry with arteriovenous fistula (AVF) or graft (AVG) outcomes (8, 11, 13, 14), IH and excessive fibrosis may negatively influence the selection of vessels for vascular access surgeries (15).

In the acute or postoperative scenarios, IH is the main pathophysiological feature in arterial restenosis and vein graft disease (9, 16). Vascular fibrosis underlies post-thrombotic syndrome after deep vein thrombosis (7). Excessive postoperative fibrosis also plays a significant role in maturation failure of newly created AVFs, which is further exacerbated by concurrent IH (8, 17). The chronic and acute/postoperative distinctions are particularly important to the study of vascular remodeling. On one hand, both processes differ in the presence or absence of wall injury, sources of inflammation, and the type of regulatory or healing response. On the other hand, acute remodeling occurs on the fabric of chronically adapted tissues, which may influence the acute response. Importantly, most of our understanding of venous IH and fibrosis applies to the

acute and postoperative settings, with limited information about factors contributing to chronic wall changes due to the scarcity of systematic histopathology studies.

In this work, we embarked on a comparative analysis of upper vein morphometry in 131 veins from stage 5 CKD and end-stage kidney disease (ESKD) patients and 184 from non-CKD organ donors with moderate prevalence of other chronic comorbidities. We studied the associations of clinical characteristics with venous morphometry, and the specific roles of CKD and hemodialysis on these vascular changes. To our knowledge, this is the first systematic study of upper extremity veins in more than 300 CKD and non-CKD patients. This information may be valuable for the understanding of mechanisms driving postoperative remodeling of veins after access creation and for the design of preventive treatments and lifestyle interventions to improve vascular health in CKD patients.

Materials and methods

Study subjects and sample collection

The CKD cohort consisted of 131 patients, who were undergoing surgery for AVF creation and enrolled in prospective studies previously reported by us (8, 18). Of these, 34 were classified as stage 5 CKD (CKD5; defined as estimated glomerular filtration rate [eGFR] < 15, not on dialysis) while 97 were hemodialysis-dependent (ESKD). Dialysis vintage was defined as the time between the first day of dialysis and the day of vein collection, minus the time with a functioning kidney transplant. The patients provided written informed consent during their preoperative visit, under a protocol approved by the University of Miami Institutional Review Board and adherent to the Declaration of Helsinki. We obtained a 1–5 mm cross-section of the pre-access vein (111 basilic, 11 cephalic, 5 brachial, and 4 median cubital) that would have been otherwise discarded after AVF creation.

The non-CKD cohort included 184 organ donors whose tissues were donated for research purposes through a collaboration with the Life Alliance Recovery Agency. Cross-sectional samples of upper extremity veins (164 basilic and 20 cephalic veins), approximately 2 cm in length, were obtained post mortem following organ procurement procedures. All veins were collected in RNAlater (QIAGEN, Germantown, MD) and stored at -80°C . A 1–5 mm cross-section was fixed in 10% neutral formalin (Sigma-Aldrich, St. Louis, MO) before paraffin embedding and sectioning.

Histology and morphometry measurements

Vein sections were stained with Masson's trichrome for gross histomorphometric analysis. Medial fibrosis (% area of collagen), intimal area, and medial area were quantified using ImageJ (National Institutes of Health) and color thresholding methods. Intimal hyperplasia (IH) was calculated as the intima/media area ratio to normalize for vein size differences due to anatomy or tissue shrinkage during formalin fixation and dehydration. Images were acquired using a VisionTek DM01 digital microscope (Sakura Finetek, Torrance, CA). Operators blinded to the clinical data performed image digital processing and morphometric measurements.

Statistical analyses

Statistical analyses were performed using XLSTAT 2020.1.1 (Addinsoft Inc., New York, NY) and GraphPad Prism 8.4.0 (San Diego, CA). Normally distributed data were expressed as mean \pm standard deviation (SD) and compared using the Student's *t*-test. When normality criteria were not met, data were expressed as median and interquartile range (IQR) and compared using the Mann-Whitney test or Kruskal-Wallis tests with *post hoc* comparisons. Categorical values were compared using the Fisher's exact test. Associations between binary clinical covariates (positive or negative diagnosis of CKD/ESKD, diabetes, and hypertension) and continuous morphometry data (intima/media area ratio, and medial fibrosis) were evaluated using multivariate general linear regression models adjusted for age, sex, ethnicity/race, comorbidities, and type of vein. In addition, we evaluated associations between clinical covariates and upper quartile morphometry values (Q3-maximum). Continuous data were converted to binary status (1 if \geq Q3, 0 if $<$ Q3) based on the upper quartile values of the overall study population and analyzed using multivariate logistic regression models adjusted for the above characteristics. To examine the additive effects of CKD/ESKD and diabetes on upper quartile morphometry status, we used logistic regression models controlling for age. Results were considered significant when $p < 0.05$.

Results

Characteristics of the study cohort

The overall cohort had a mean age of 49 years (\pm 15) and was composed of 33% females, 30% non-Hispanic blacks, 32% Hispanics, and 36% whites (Table 1). Over 60% of participants were positive for hypertension and 25% had diabetes independent of CKD status. Most of the vessels were basilic veins (275/315, 87%), with minor proportions of cephalic (10%) and brachial or median cubital veins (3%). Because of its deep anatomical location, the predominance of basilic veins ensured that morphometric measurements reflected chronic remodeling as a result of physiological stimuli and not likely due to venipuncture or other vascular injuries.

As expected, the CKD/ESKD subgroup was significantly older than non-CKD participants (56 vs. 45 years, respectively) and had higher prevalence of hypertension (98 vs. 36%) and diabetes (47 vs. 10%). There was also a different ratio of black to white individuals between the CKD/ESKD and non-CKD groups (Table 1). Among kidney disease participants, 34/131 (26%) were CKD5, while 29 (22%) and 68 (52%) had ESKD with and without history of a previous AVF/AVG, respectively (Table 1). Dialysis vintage ranged from 0.7 to 43.6 (median 4.5, IQR 3.0–11.1) months in ESKD patients without a previous AVF or AVG, and 0.2 to 163 (median 17.3, IQR 9.1–41.6) months in participants with a prior AVF/AVG access. Eighteen patients in the latter group had the previous access in the same arm, 9 in the contralateral arm, and 2 bilaterally. Only 4/97 ESKD participants had history of peritoneal dialysis.

Clinical factors associated with chronic intimal hyperplasia

Intimal hyperplasia defined as intima/media area ratio was quantified in venous cross-sections as a surrogate marker of adaptive cell accumulation and/or survival. This parameter illustrates intimal expansion compared to the media while correcting for the size of the vessel. Intima/media area ratio ranged from 0.00 to 1.50 in the overall cohort (Figure 1A). Intimal hyperplasia was significantly higher in CKD/ESKD patients than in non-CKD donors (median 0.32 vs. 0.21, $p < 0.0001$), including patients with CKD5 status, ESKD with and without a previous AVF/AVG, and ESKD with dialysis vintage $>$ 12 months (Table 2). After adjusting for additional demographic and clinical characteristics, IH was significantly associated with increasing age ($\beta = 0.13$, $p = 0.046$) and CKD/ESKD ($\beta = 0.18$, $p = 0.025$), specifically with history of a previous AVF/AVG and vintage $>$ 12 months (Table 3). An analysis controlling for both AVF/AVG history and vintage was not possible due to collinearity between these variables. Nonetheless, while the association with a previous AVF/AVG

TABLE 1 Baseline characteristics of the study cohorts.

	All (N = 315)	CKD/ESKD (N = 131)	Non-CKD (N = 184)	P-value*
Demographics				
Age (y)–mean ± SD	49.33 ± 14.97	55.79 ± 13.57	44.72 ± 14.22	<0.0001
Female sex (%)	103 (33)	44 (34)	59 (32)	0.81
Hispanic (%)	102 (32)	47 (36)	55 (30)	0.27
Black (%)	95 (30)	68 (52)	27 (15)	0.0001
White (%)	118 (37)	16 (12)	102 (55)	0.0001
Comorbidities/CKD stage				
Hypertension (%)	195 (62)	128 (98)	67 (36)	0.0001
Diabetes (%)	79 (25)	61 (47)	18 (10)	0.0001
CKD/ESKD (%)	131 (42)	131 (100)	–	–
Stage 5 CKD	34 (11)	34 (26)	–	–
ESKD no prior AVF	68 (22)	68 (52)	–	–
ESKD + prior AVF	29 (9)	29 (22)	–	–
Type of vein				
Basilic (%)	275 (87)	111 (85)	164 (89)	0.30
Cephalic (%)	31 (10)	11 (8)	20 (11)	0.57
Other (%) ‡	9 (3)	9 (7)	–	0.0003

*P-values for CKD/ESKD vs. non-CKD comparisons.

‡Other types of veins include 4 median cubital and 5 brachial.

could be partly due to hemodynamic effects, longer dialysis vintage by itself was a predictor of IH in ESKD patients without a prior AVF or AVG access ($\beta = 0.36$, $p = 0.003$; **Supplementary Table 1**).

In addition to the associations of age and ESKD subgroups with gradual increases in IH (**Figures 1B,C**), we tested for the relationship of clinical characteristics with upper quartile values (Q3-maximum; $IH \geq 0.042$). These represent conditions that exacerbate intimal growth or imbalanced intimal/medial remodeling. Only diabetes was significantly associated with upper quartile IH values in the main logistic regression model (**Table 4** and **Figure 1B**), and further demonstrated a strong additive effect with ESKD plus a prior AVF/AVG (**Table 4** and **Figure 1D** top). Dialysis vintage > 12 months also predicted upper quartile IH values regardless of diabetes status, and diabetes combined with vintage < 12 months (**Table 4** and **Figure 1D** bottom).

Clinical factors associated with chronic medial fibrosis

The percentage of medial fibrosis in venous cross-sections is a surrogate marker of adaptive ECM remodeling. Medial fibrosis ranged from 14.92 to 66.52% in the overall study cohort (**Figure 2A**). Higher medial fibrosis was associated with increasing age ($\beta = 0.17$, $p = 0.012$) and diabetes ($\beta = 0.15$, $p = 0.018$) in multivariate general linear regression models (**Table 3**). In contrast with the increase of venous IH in subgroups of ESKD, the percent of medial fibrosis was similar

between CKD/ESKD and non-CKD individuals (**Tables 2, 3** and **Figure 2A**).

Increasing age was the main predictor of upper quartile values of fibrosis ($\geq 46.85\%$; OR = 1.03 per year, $p = 0.013$) (**Table 4** and **Figure 2B**). Combined logistic regression models of (+) diabetes/(+) CKD5 were only significantly different with respect to a couple of (–) diabetes models but not with the rest (**Figures 2C,D**), suggesting differential effects of CKD/ESKD stages in ECM remodeling. These analyses demonstrated that age is the primary factor predicting high values of venous fibrosis independent of CKD or diabetes status. **Figure 3** portrays representative pictures of vein morphometry in non-CKD and CKD/ESKD individuals.

Discussion

Intimal hyperplasia and imbalanced ECM remodeling are histopathological changes associated with poor venous health (7, 8, 10, 19, 20). Kidney disease is considered a major contributing factor in the development of these vascular changes (2, 3, 5, 21). However, as various risk factors coexist in CKD patients, it is important to understand the independent contribution of each characteristic to detrimental vascular changes. In this study we evaluated the associations of clinical and demographic characteristics with the morphometry of upper extremity veins. Our findings clarify the role of age, CKD stage, dialysis vintage, vascular access history, hypertension, and diabetes in the chronic remodeling of vessels, and may be applicable to the improvement of vein health in CKD patients.

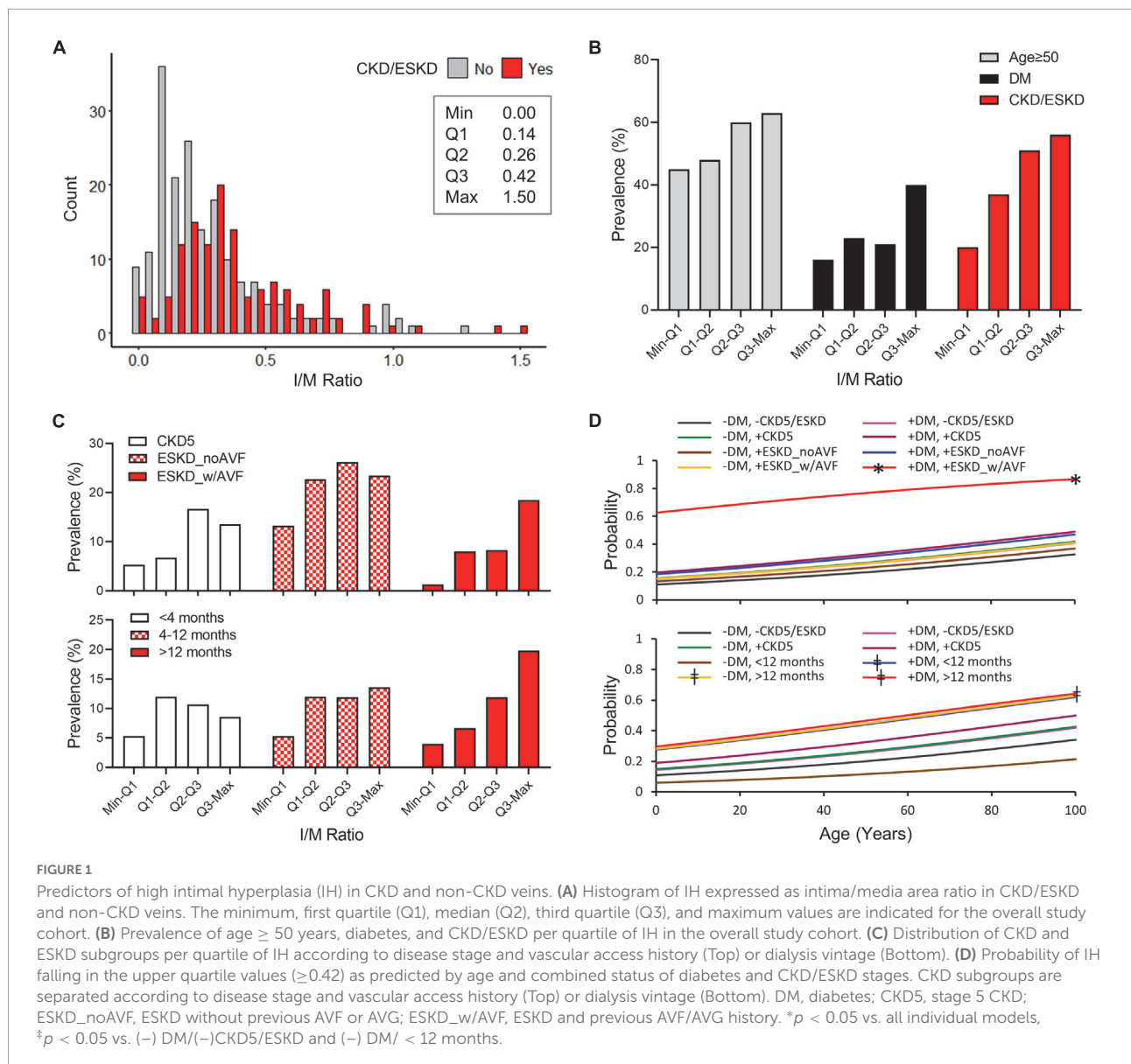


TABLE 2 Morphometric comparisons between the CKD/ESKD and non-CKD cohorts.

	N	Intima/media ratio	P-value*	Medial fibrosis (%)	P-value*
Non-CKD	184	0.21 [0.11–0.36]	–	41.41 \pm 8.04	–
CKD/ESKD	131	0.32 [0.22–0.51]	<0.0001	41.75 \pm 9.03	>0.99
CKD stage 5	34	0.34 [0.23–0.47]	0.0091	42.20 \pm 9.74	>0.99
ESKD by AVF history					
No prior AVF	68	0.31 [0.21–0.47]	0.017	41.71 \pm 8.24	>0.99
With prior AVF	29	0.43 [0.25–0.59]	0.0002	41.30 \pm 10.18	>0.99
ESKD by vintage					
<4 months	29	0.30 [0.22–0.41]	0.29	39.94 \pm 7.97	>0.99
4–12 months	34	0.29 [0.20–0.51]	0.26	42.36 \pm 8.15	>0.99
> 12 months	34	0.36 [0.26–0.65]	0.0001	42.23 \pm 10.11	>0.99

Values presented as mean \pm SD or median [interquartile range].

*P-values vs. non-CKD. Bold values indicate statistical significance.

TABLE 3 Clinical predictors of venous morphometry using multivariate general linear regression models.

	Intima/media area ratio		Medial fibrosis	
	β (95% CI)	P-value	β (95% CI)	P-value
Main model				
Age (per year)	0.13 (0.002, 0.26)	0.046	0.17 (0.04, 0.30)	0.012
Female sex	-0.08 (-0.19, 0.03)	0.133	0.03 (-0.08, 0.14)	0.615
Hispanic	-0.02 (-0.15, 0.11)	0.731	-0.06 (-0.19, 0.07)	0.345
Black	-0.10 (-0.25, 0.04)	0.154	0.09 (-0.06, 0.23)	0.246
Hypertension	-0.01 (-0.16, 0.14)	0.909	-0.04 (-0.19, 0.11)	0.628
Diabetes	0.06 (-0.06, 0.18)	0.333	0.15 (0.03, 0.28)	0.018
CKD/ESKD	0.18 (0.02, 0.34)	0.025	-0.11 (-0.27, 0.05)	0.170
Basilic vein	-0.03 (-0.13, 0.09)	0.660	0.03 (-0.08, 0.14)	0.619
CKD subgroup models				
By stage and AVF history				
Age (per year)	0.13 (0.004, 0.26)	0.043	0.17 (0.04, 0.30)	0.013
Female sex	-0.09 (-0.21, 0.02)	0.095	0.03 (-0.08, 0.14)	0.624
Hispanic	-0.02 (-0.15, 0.11)	0.758	-0.06 (-0.19, 0.07)	0.344
Black	-0.09 (-0.23, 0.05)	0.224	0.08 (-0.06, 0.23)	0.256
Hypertension	-0.01 (-0.16, 0.14)	0.909	-0.04 (-0.19, 0.12)	0.638
Diabetes	0.06 (-0.07, 0.18)	0.359	0.15 (0.03, 0.28)	0.018
CKD subgroup				
CKD stage 5	0.12 (-0.01, 0.25)	0.076	-0.06 (-0.20, 0.07)	0.341
ESKD no prior AVF	0.08 (-0.07, 0.23)	0.276	-0.09 (-0.24, 0.06)	0.254
ESKD + prior AVF	0.19 (0.06, 0.32)	0.004	-0.08 (-0.21, 0.05)	0.250
Basilic vein	-0.04 (-0.15, 0.07)	0.522	0.03 (-0.08, 0.14)	0.606
By stage and vintage				
Age (per year)	0.14 (0.005, 0.26)	0.042	0.17 (0.03, 0.30)	0.015
Female sex	-0.10 (-0.21, 0.01)	0.088	0.02 (-0.09, 0.133)	0.705
Hispanic	-0.02 (-0.15, 0.11)	0.763	-0.06 (-0.19, 0.07)	0.345
Black	-0.09 (-0.23, 0.05)	0.210	0.09 (-0.06, 0.23)	0.225
Hypertension	-0.01 (-0.16, 0.14)	0.882	-0.04 (-0.19, 0.12)	0.635
Diabetes	0.07 (-0.05, 0.19)	0.268	0.15 (0.03, 0.28)	0.017
CKD/ESKD subgroup				
CKD stage 5	0.12 (-0.01, 0.25)	0.079	-0.06 (-0.20, 0.07)	0.344
Vintage < 4 mo.	0.05 (-0.09, 0.18)	0.496	-0.12 (-0.25, 0.01)	0.074
Vintage 4–12 mo.	0.03 (-0.10, 0.17)	0.631	-0.06 (-0.19, 0.08)	0.428
Vintage > 12 mo.	0.22 (0.09, 0.35)	0.001	-0.04 (-0.17, 0.09)	0.538
Basilic vein	-0.03 (-0.14, 0.08)	0.573	0.03 (-0.08, 0.14)	0.635

Reference levels for binary variables are male sex, white race, non-basilic vein, and negative for hypertension, diabetes, and CKD/ESKD. CI, confidence interval. Bold values indicate statistical significance.

Our analysis of > 300 CKD and non-CKD veins indicates that IH and medial fibrosis are not unique to CKD/ESKD, and that both groups present overlapping ranges of these morphometric parameters. Both IH and medial fibrosis increase over time as a function of age. The positive association of age with both cellular and ECM changes agrees with the concept of vascular aging that is thought to affect arteries and veins (22–24). Age-related alterations in endothelial cells (ECs) and smooth muscle cells (SMCs) induce intimal expansion and wall stiffness in arteries in response to local mechanical, hemodynamic, and

neurohumoral stimulations (25, 26). The nature of the stimuli is likely different in veins since they are not subjected to the same hemodynamic conditions and pressure changes as arteries. Nonetheless, there is evidence of endothelial dysfunction and a pro-inflammatory and pro-oxidant phenotype in ECs of aged veins (27–29) that may contribute to maladaptive vascular changes. Dysregulation of the contractile SMC phenotype with age has also been associated with vascular fibrosis and stiffness (26). Specifically in aged veins, higher TGF β signaling and tissue inhibitors of metalloproteinases (TIMPs), along with

TABLE 4 Clinical predictors of upper quartile (\geq Q3) morphometry values using multivariate logistic regression models.

	Intima/media area ratio \geq 0.42		Medial fibrosis \geq 46.85%	
	OR (95% CI)	P-value	OR (95% CI)	P-value
Main model				
Age (per year)	1.01 (0.99, 1.03)	0.348	1.03 (1.01, 1.05)	0.013
Female sex	0.81 (0.46, 1.43)	0.470	1.40 (0.80, 2.44)	0.234
Hispanic	0.73 (0.37, 1.46)	0.372	0.75 (0.38, 1.48)	0.408
Black	0.76 (0.35, 1.61)	0.467	1.02 (0.48, 2.15)	0.960
Hypertension	1.03 (0.47, 2.23)	0.944	0.73 (0.34, 1.54)	0.405
Diabetes	2.02 (1.08, 3.80)	0.029	1.90 (0.99, 3.64)	0.052
CKD/ESKD	1.69 (0.79, 3.63)	0.177	0.92 (0.43, 1.96)	0.824
Basilic vein	1.33 (0.58, 3.04)	0.497	0.57 (0.27, 1.21)	0.146
Additive models				
By stage and AVF history				
Age (per year)	1.01 (0.99, 1.03)	0.188	1.03 (1.01, 1.05)	0.013
-DM, + CKD5	1.47 (0.46, 4.67)	0.519	0.51 (0.13, 1.98)	0.330
-DM, + ESKD_noAVF	1.20 (0.51, 2.86)	0.673	0.65 (0.26, 1.64)	0.360
-DM, + ESKD_w/AVF	1.43 (0.42, 4.86)	0.563	1.09 (0.32, 3.71)	0.891
+ DM, -CKD5/ESKD	1.42 (0.46, 4.39)	0.546	1.33 (0.45, 3.91)	0.605
+ DM, + CKD5	1.95 (0.65, 5.91)	0.236	2.87 (0.99, 8.28)	0.052
+ DM, + ESKD_noAVF	1.81 (0.74, 4.43)	0.197	1.48 (0.62, 3.56)	0.378
+ DM, + ESKD_w/AVF	13.19 (3.38, 51.50)	< 0.001	0.68 (0.17, 2.66)	0.577
By stage and vintage				
Age (per year)	1.02 (0.99, 1.04)	0.156	1.03 (1.01, 1.05)	0.015
-DM, + CKD5	1.44 (0.45, 4.60)	0.537	0.51 (0.13, 1.99)	0.335
-DM, < 12 months	0.53 (0.17, 1.64)	0.267	0.78 (0.30, 1.99)	0.598
-DM, > 12 months	3.25 (1.22, 8.62)	0.018	0.74 (0.23, 2.43)	0.621
+ DM, -CKD5/ESKD	1.40 (0.45, 4.34)	0.560	1.34 (0.45, 3.93)	0.598
+ DM, + CKD5	1.93 (0.64, 5.83)	0.246	2.88 (0.999, 8.33)	0.050
+ DM, < 12 months	3.15 (1.34, 7.41)	0.009	1.11 (0.45, 2.75)	0.821
+ DM, > 12 months	3.48 (1.09, 11.09)	0.035	1.37 (0.41, 4.53)	0.609

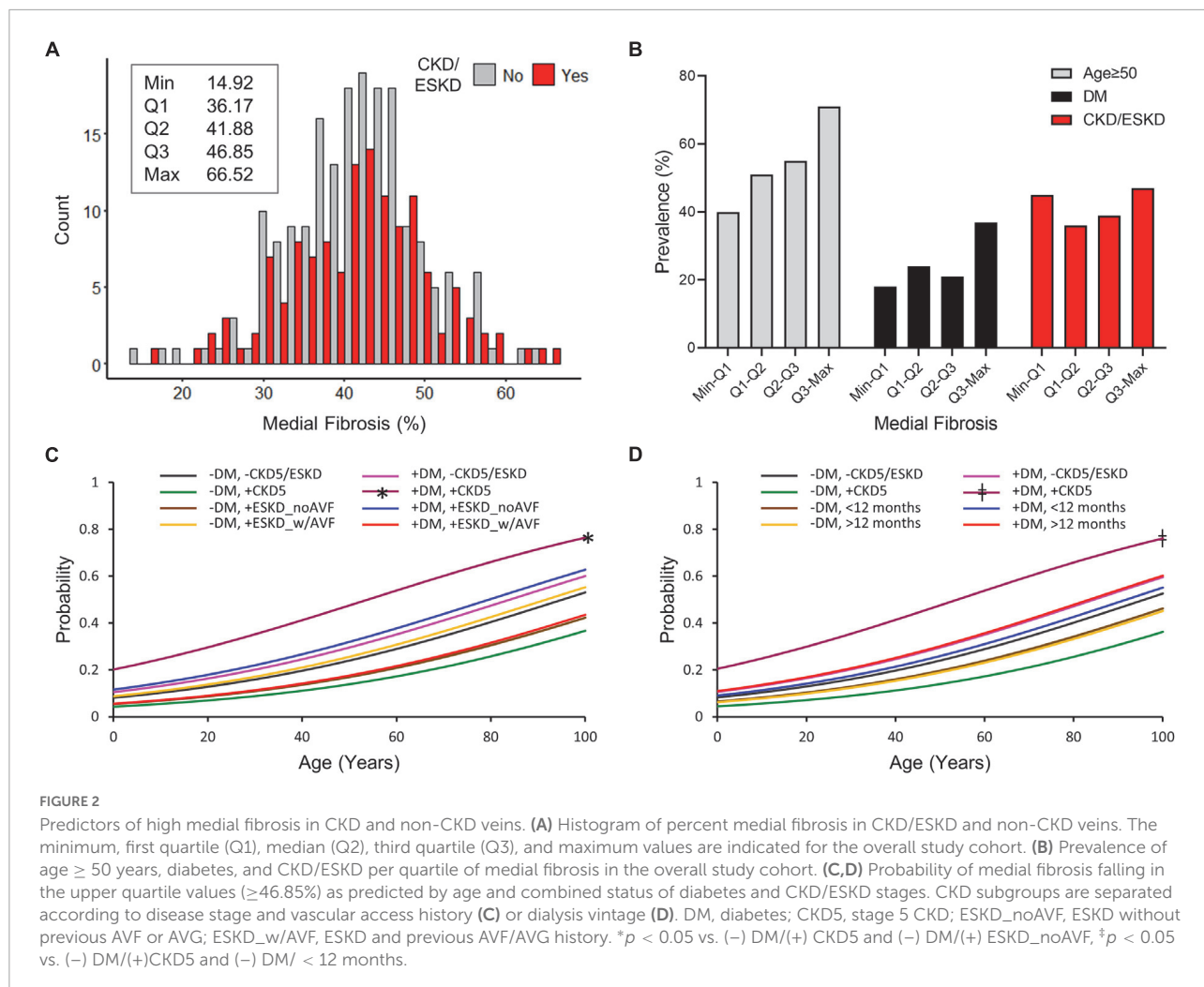
Reference levels for binary variables are male sex, white race, non-basilic vein, and negative for hypertension, diabetes (DM), and CKD/ESKD. The reference level for the additive model is negative for both diabetes and CKD/ESKD. CI, confidence interval; OR, odds ratio. ESKD_w/AVF and _noAVF refer to ESKD patients with and without history of a previous AVF/AVG, respectively. Similarly, < 12 and > 12 months refer to ESKD patients separated by dialysis vintage. Bold values indicate statistical significance.

lower metalloproteinase-2 (MMP-2) expression, could explain an age-related imbalance in ECM deposition (30, 31).

The association of ESKD with increased IH is not at all surprising, but finally puts to rest a presumed notion based on comparisons with small numbers of non-CKD veins (three to 15 individuals) (3, 32–35). Our work further clarifies that this association is only evident when dialysis vintage is > 12 months or in patients with a prior history of an AVF or AVG, who also tend to have longer dialysis vintage. The independent effect of vintage IH was confirmed in ESKD patients without a previous AVF. However, a hemodynamic effect of a previous access in the arm is also likely. It is possible that the increase in IH is a cumulative response to volume overload, oxidative stress, or dialysis-related inflammation. The relationship between dialysis vintage and history of a previous AVF/AVG with increased IH underscores the importance of addressing poor access

maturation and patency outcomes, as the suitability of vessels may be lower for secondary vascular accesses.

Despite the significant effects of dialysis vintage in IH, we failed to find a consistent association between CKD/ESKD stages and chronic venous fibrosis. The risk of high medial fibrosis was significantly higher in patients with diabetes and CKD5 only with respect to non-diabetic CKD5 or shorter vintage ESKD patients, but not compared to the rest of the models, suggesting differential effects of ESKD stages on the venous ECM. These results contrast the widely known association of kidney disease with increased fibrosis of kidneys, heart, arteries, and other organ systems (36, 37). However, recent studies in humans and mice have demonstrated that the profibrotic effect of CKD is not so clear-cut, and that different ECM deposition and degradation phenotypes exist depending on disease activity and progression (38–40). Creation

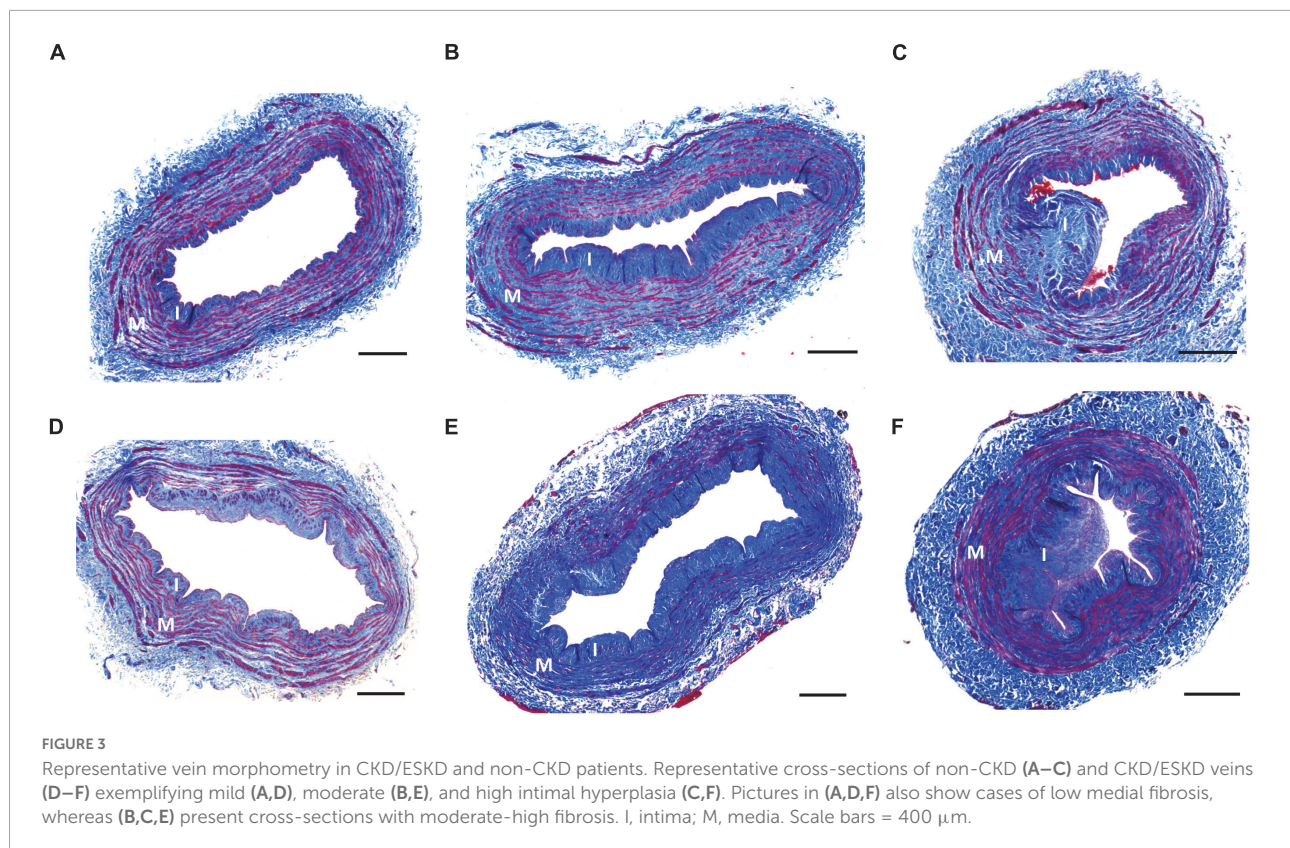


of an AVF causes a profound increase in venous fibrosis in the juxta-anastomotic segment of the access (8). Our results indicate that this is a local effect that does not seem to affect ECM remodeling in more proximal veins of patients with previous AVF history.

Importantly, our study demonstrated a broad influence of diabetes in the detrimental chronic remodeling of veins by exacerbating IH and increasing medial fibrosis. This finding is of interest given the treatable nature of hyperglycemia and the potential benefits in improving vein health. A relationship between diabetes and arterial IH and fibrosis has been previously reported (2, 41–43), which has been mostly blamed on the effects of advanced glycation end-products (AGEs) on the vascular wall (44). The latter are known to increase endothelial dysfunction, oxidative stress, vascular inflammation, and angiotensin II signaling, among others (44, 45). The association of diabetes with upper quartile levels of IH and not with gradual increases mimics previous observations in carotid IH (42), and suggests an exacerbating role or independent mechanism superimposing the cellular responses

to dialysis conditions. The level of AGEs in tissues is determined by glycaemic control, turnover of proteins, and kidney function (46–48). Therefore, an additive vasculopathic effect of AGEs in CKD patients is highly conceivable (49). Current guidelines by the Kidney Disease Outcomes Quality Initiative for vessel preservation in pre-dialysis patients mainly refer to avoidance of vessel injury (50). However, improving vein suitability may be an additional reason for life-long glycaemic control. Interestingly, unlike arteries (26, 42), hypertension was not associated with chronic venous IH or fibrosis, likely reflecting the low-pressure conditions of venous circulation.

The limitations of the study include the retrospective nature of the analyses, the lack of information on the onset of comorbidities for the CKD cohort, and the limited clinical records for organ donors which prevented us from analyzing the effects of other clinical factors. While statistical models accounted for both clinical and demographics factors, differences in the latter between the CKD and non-CKD groups may be a confounding factor to consider in future studies.



Despite these limitations, to our knowledge, this is the first systematic analysis of vein morphometry in CKD and non-CKD individuals. This work improves our understanding of vascular aging and dialysis effects in upper extremity veins and identifies diabetes as a critical and manageable factor in the development of venous IH and medial fibrosis.

Data availability statement

The raw data supporting the conclusions of this article will be made available by the authors, without undue reservation.

Ethics statement

The studies involving human participants were reviewed and approved by the University of Miami Institutional Review Board. The patients/participants provided their written informed consent to participate in this study.

Author contributions

LM and RV-P contributed to the idea and study design. AS and MT were responsible for tissue collection. XL,

ZZ, AC, CM, KM-P, and AA were responsible for tissue processing and data acquisition. XL, LM, and YP performed data analysis. XL, LM, and RV-P drafted the manuscript. LM, MT, AS, and RV-P were responsible for supervision and mentorship. MT, LS, and XY contributed fruitful discussions and clinical insights. All authors took part in the interpretation of the results and approved the final version of the manuscript.

Funding

This study was supported by the National Institutes of Health (grants R01-DK098511 to LS and RV-P, R01-DK121227 and R01-DK132888 to RV-P, and K08-HL151747 to LM), and the VA Merit Award (grant IBX004658 to RV-P).

Acknowledgments

We gratefully acknowledge the contribution of organ donors, their family members, and all the staff and surgical team at the Life Alliance Organ Recovery Agency for their collaboration in the collection of vascular tissues.

Conflict of interest

The authors declare that the research was conducted in the absence of any commercial or financial relationships that could be construed as a potential conflict of interest.

Publisher's note

All claims expressed in this article are solely those of the authors and do not necessarily represent those of their affiliated

organizations, or those of the publisher, the editors and the reviewers. Any product that may be evaluated in this article, or claim that may be made by its manufacturer, is not guaranteed or endorsed by the publisher.

Supplementary material

The Supplementary Material for this article can be found online at: <https://www.frontiersin.org/articles/10.3389/fcvm.2022.1005030/full#supplementary-material>

References

- Siddiqui MA, Ashraff S, Carline T. Maturation of arteriovenous fistula: analysis of key factors. *Kidney Res Clin Pract.* (2017) 36:318–28. doi: 10.23876/j.krcp.2017.36.4.318
- Selvin E, Najjar SS, Cornish TC, Halushka MK. A comprehensive histopathological evaluation of vascular medial fibrosis: insights into the pathophysiology of arterial stiffening. *Atherosclerosis.* (2010) 208:69–74. doi: 10.1016/j.atherosclerosis.2009.06.025
- Allon M, Litovsky SH, Tey JCS, Sundberg CA, Zhang Y, Chen Z, et al. Abnormalities of vascular histology and collagen fiber configuration in patients with advanced chronic kidney disease. *J Vasc Access.* (2019) 20:31–40. doi: 10.1177/1129729818773305
- Verbeke FH, Agharazii M, Boutouyrie P, Pannier B, Guérin AP, London GM. Local shear stress and brachial artery functions in end-stage renal disease. *J Am Soc Nephrol.* (2007) 18:621–8. doi: 10.1681/ASN.2006040400
- London GM, Marchais SJ, Guerin AP, Metivier F, Pannier B. Vascular and cardiac remodeling in end-stage renal disease. *Nefrologia.* (1997) 17:17–22.
- Kolodgie FD, Burke AP, Nakazawa G, Virmani R. Is pathologic intimal thickening the key to understanding early plaque progression in human atherosclerotic disease?. *Arterioscler Thromb Vasc Biol.* (2007) 27:986–9. doi: 10.1161/ATVBAHA.0000258865.44774.41
- Kahn SR. The post-thrombotic syndrome. *Hematology Am Soc Hematol Educ Program.* (2016) 2016:413–8. doi: 10.1182/asheducation-2016.1.413
- Martinez L, Duque JC, Tabbara M, Paez A, Selman G, Hernandez DR, et al. Fibrotic venous remodeling and nonmaturation of arteriovenous fistulas. *J Am Soc Nephrol.* (2018) 29:1030–40. doi: 10.1681/ASN.2017050559
- Heckenkamp J, Lamuraglia GM. Intimal hyperplasia, arterial remodeling, and restenosis: an overview. *Perspect Vasc Surg Endovasc Ther.* (1999) 11:71–94.
- Raffetto JD, Khalil RA. Mechanisms of lower extremity vein dysfunction in chronic venous disease and implications in management of varicose veins. *Vessel Plus.* (2021) 5:36. doi: 10.20517/2574-1209.2021.16
- Tabbara M, Duque JC, Martinez L, Escobar LA, Wu W, Pan Y, et al. Pre-existing and postoperative intimal hyperplasia and arteriovenous fistula outcomes. *Am J Kidney Dis.* (2016) 68:455–64. doi: 10.1053/j.ajkd.2016.02.044
- Alpers CE, Imrey PB, Hudkins KL, Wietecha TA, Radeva M, Allon M, et al. Histopathology of veins obtained at hemodialysis arteriovenous fistula creation surgery. *J Am Soc Nephrol.* (2017) 28:3076–88. doi: 10.1681/ASN.2016050598
- Vazquez-Padron RI, Allon M. New insights into dialysis vascular access: impact of preexisting arterial and venous pathology on AVF and AVG outcomes. *Clin J Am Soc Nephrol.* (2016) 11:1495–503. doi: 10.2215/CJN.01860216
- Cheung AK, Imrey PB, Alpers CE, Robbin ML, Radeva M, Larive B, et al. Intimal hyperplasia, stenosis, and arteriovenous fistula maturation failure in the hemodialysis fistula maturation study. *J Am Soc Nephrol.* (2017) 28:3005–13. doi: 10.1681/ASN.2016121355
- MacRae JM, Oliver M, Clark E, Dipchand C, Hiremath S, Kappel J, et al. Arteriovenous vascular access selection and evaluation. *Can J Kidney Health Dis.* (2016) 3:2054358116669125. doi: 10.1177/2054358116669125
- Parang P, Arora R. Coronary vein graft disease: pathogenesis and prevention. *Can J Cardiol.* (2009) 25:e57–62. doi: 10.1016/s0828-282x(09)70486-6
- Hernandez DR, Applewhite B, Martinez L, Laurito T, Tabbara M, Rojas MG, et al. Inhibition of lysyl oxidase with beta-aminopropionitrile improves venous adaptation after arteriovenous fistula creation. *Kidney360.* (2021) 2:270–8. doi: 10.34067/kid.0005012020
- Martinez L, Tabbara M, Duque JC, Selman G, Falcon NS, Paez A, et al. Transcriptomics of human arteriovenous fistula failure: genes associated with nonmaturation. *Am J Kidney Dis.* (2019) 74:73–81. doi: 10.1053/j.ajkd.2018.12.035
- Charles AK, Gresham GA. Histopathological changes in venous grafts and in varicose and non-varicose veins. *J Clin Pathol.* (1993) 46:603–6. doi: 10.1136/jcp.46.7.603
- Woodside KJ, Hu M, Burke A, Murakami M, Pounds LL, Killewich LA, et al. Morphologic characteristics of varicose veins: possible role of metalloproteinases. *J Vasc Surg.* (2003) 38:162–9. doi: 10.1016/s0741-5214(03)00134-4
- Valdivielso JM, Rodriguez-Puyol D, Pascual J, Barrios C, Bermúdez-López M, Sánchez-Niño MD, et al. Atherosclerosis in chronic kidney disease: more, less, or just different? *Arterioscler Thromb Vasc Biol.* (2019) 39:1938–66. doi: 10.1161/ATVBAHA.119.312705
- Xu X, Wang B, Ren C, Hu J, Greenberg DA, Chen T, et al. Age-related Impairment of Vascular Structure and Functions. *Aging Dis.* (2017) 8:590–610. doi: 10.14336/AD.2017.0430
- Molnar AA, Nadasy GL, Dornyei G, Patai BB, Delfavero J, Fülöp GÁ, et al. The aging venous system: from varicosities to vascular cognitive impairment. *Geroscience.* (2021) 43:2761–84. doi: 10.1007/s11357-021-00475-2
- Greaney JL, Farquhar WB. Why do veins stiffen with advancing age?. *J Appl Physiol.* (1985) 2011:11–2. doi: 10.1152/jappphysiol.01273.2010
- Ungvari Z, Tarantini S, Donato AJ, Galvan V, Csiszar A. Mechanisms of Vascular Aging. *Circ Res.* (2018) 123:849–67. doi: 10.1161/CIRCRESAHA.118.311378
- Harvey A, Montezano AC, Lopes RA, Rios F, Touyz RM. Vascular fibrosis in aging and hypertension: molecular mechanisms and clinical implications. *Can J Cardiol.* (2016) 32:659–68. doi: 10.1016/j.cjca.2016.02.070
- Donato AJ, Eskurza I, Silver AE, Levy AS, Pierce GL, Gates PE, et al. Direct evidence of endothelial oxidative stress with aging in humans: relation to impaired endothelium-dependent dilation and upregulation of nuclear factor-kappaB. *Circ Res.* (2007) 100:1659–66. doi: 10.1161/01.RES.0000269183.13937.e8
- Rossmann MJ, Kaplon RE, Hill SD, McNamara MN, Santos-Parker JR, Pierce GL, et al. Endothelial cell senescence with aging in healthy humans: prevention by habitual exercise and relation to vascular endothelial function. *Am J Physiol Heart Circ Physiol.* (2017) 313:H890–5. doi: 10.1152/ajpheart.00416.2017
- Donato AJ, Black AD, Jablonski KL, Gano LB, Seals DR. Aging is associated with greater nuclear NF kappa B, reduced I kappa B alpha, and increased expression of proinflammatory cytokines in vascular endothelial cells of healthy humans. *Aging Cell.* (2008) 7:805–12. doi: 10.1111/j.1474-9726.2008.00438.x
- Pascual G, Mendieta C, Garcia-Honduvilla N, Corrales C, Bellón JM, Buján J. TGF-beta1 upregulation in the aging varicose vein. *J Vasc Res.* (2007) 44:192–201. doi: 10.1159/000100375
- Perek B, Malinska A, Gasowski J, Ostalska-Nowicka D, Perek A, Jemielny M, et al. Potentially positive ageing-related variations of medial smooth muscle cells in

- the saphenous veins used as aortocoronary bypass grafts. *Folia Histochem Cytobiol.* (2016) 54:91–8. doi: 10.5603/FHC.a2016.0011
32. Lee T, Somarathna M, Hura A, Wang Y, Campos B, Arend L, et al. Natural history of venous morphologic changes in dialysis access stenosis. *J Vasc Access.* (2014) 15:298–305. doi: 10.5301/jva.5000212
33. Wali MA, Eid RA, Dewan M, Al-Homrany MA. Intimal changes in the cephalic vein of renal failure patients before arterio-venous fistula (AVF) construction. *J Smooth Muscle Res.* (2003) 39:95–105.
34. Wali MA, Eid RA, Dewan M, Al-Homrany MA. Pre-existing histopathological changes in the cephalic vein of renal failure patients before arterio-venous fistula (AVF) construction. *Ann Thorac Cardiovasc Surg.* (2006) 12:341–8.
35. Monroy MA, Fang J, Li S, Ferrer L, Birkenbach MP, Lee IJ, et al. Chronic kidney disease alters vascular smooth muscle cell phenotype. *Front Biosci.* (2015) 20:784–95. doi: 10.2741/4337
36. Panizo S, Martinez-Arias L, Alonso-Montes C, Cannata P, Martín-Carro B, Fernández-Martín JL, et al. Fibrosis in chronic kidney disease: pathogenesis and consequences. *Int J Mol Sci.* (2021) 22:408. doi: 10.3390/ijms22010408
37. Briet M, Collin C, Karras A, Laurent S, Bozec E, Jacquot C, et al. Arterial remodeling associates with CKD progression. *J Am Soc Nephrol.* (2011) 22:967–74. doi: 10.1681/ASN.2010080863
38. Rasmussen DGK, Boesby L, Nielsen SH, Tepel M, Birot S, Karsdal MA, et al. Collagen turnover profiles in chronic kidney disease. *Sci Rep.* (2019) 9:16062. doi: 10.1038/s41598-019-51905-3
39. Randles M, Lausecker F, Kong Q, Suleiman H, Reid G, Kolatsi-Joannou M, et al. Identification of an altered matrix signature in kidney aging and disease. *J Am Soc Nephrol.* (2021) 32:1713–32. doi: 10.1681/ASN.2020101442
40. Freise C, Schaefer B, Bartosova M, Bayazit A, Bauer U, Pickardt T, et al. Arterial tissue transcriptional profiles associate with tissue remodeling and cardiovascular phenotype in children with end-stage kidney disease. *Sci Rep.* (2019) 9:10316. doi: 10.1038/s41598-019-46805-5
41. Nathan DM, Lachin J, Cleary P, Orchard T, Brillon DJ, Backlund JY, et al. Intensive diabetes therapy and carotid intima-media thickness in type 1 diabetes mellitus. *N Engl J Med.* (2003) 348:2294–303. doi: 10.1056/NEJMoa022314
42. Gomez-Marcos MA, Recio-Rodriguez JJ, Rodriguez-Sanchez E, Patino-Alonso MC, Magallón-Botaya R, Martínez-Vizcaino V, et al. [Carotid intima-media thickness in diabetics and hypertensive patients]. *Rev Esp Cardiol.* (2011) 64:622–5. doi: 10.1016/j.recesp.2010.10.025
43. Al-Auqbi TFR, Al-Sabbagh AA, Al-Karawi IN, Maj B. Effect of hypertension on the carotid artery intima media thickness (IMT) in patients with type 2 diabetes mellitus – Across sectional study. *Int J Diabetes Res.* (2014) 3:66–70.
44. Stirban A, Gawlowski T, Roden M. Vascular effects of advanced glycation endproducts: clinical effects and molecular mechanisms. *Mol Metab.* (2014) 3:94–108. doi: 10.1016/j.molmet.2013.11.006
45. Koka V, Wang W, Huang XR, Kim-Mitsuyama S, Truong LD, Lan HY. Advanced glycation end products activate a chymase-dependent angiotensin II-generating pathway in diabetic complications. *Circulation.* (2006) 113:1353–60. doi: 10.1161/CIRCULATIONAHA.105.575589
46. Monnier VM, Sell DR, Nagaraj RH, Miyata S, Grandhee S, Odetti P, et al. Maillard reaction-mediated molecular damage to extracellular matrix and other tissue proteins in diabetes, aging, and uremia. *Diabetes.* (1992) 41:36–41. doi: 10.2337/diab.41.2.s36
47. Miyata T, Ueda Y, Horie K, Nangaku M, Tanaka S, van Ypersele de Strihou C. Renal catabolism of advanced glycation end products: the fate of pentosidine. *Kidney Int.* (1998) 53:416–22. doi: 10.1046/j.1523-1755.1998.00756.x
48. Berg TJ, Dahl-Jorgensen K, Torjesen PA, Hanssen KF. Increased serum levels of advanced glycation end products (AGEs) in children and adolescents with IDDM. *Diabetes Care.* (1997) 20:1006–8. doi: 10.2337/diacare.20.6.1006
49. Raj DS, Choudhury D, Welbourne TC, Levi M. Advanced glycation end products: a Nephrologist's perspective. *Am J Kidney Dis.* (2000) 35:365–80. doi: 10.1016/s0272-6386(00)70189-2
50. Lok CE, Huber TS, Lee T, Shenoy S, Yevzlin AS, Abreo K, et al. KDOQI clinical practice guideline for vascular access: 2019 update. *Am J Kidney Dis.* (2020) 75:S1–164. doi: 10.1053/j.ajkd.2019.12.001