



Since January 2020 Elsevier has created a COVID-19 resource centre with free information in English and Mandarin on the novel coronavirus COVID-19. The COVID-19 resource centre is hosted on Elsevier Connect, the company's public news and information website.

Elsevier hereby grants permission to make all its COVID-19-related research that is available on the COVID-19 resource centre - including this research content - immediately available in PubMed Central and other publicly funded repositories, such as the WHO COVID database with rights for unrestricted research re-use and analyses in any form or by any means with acknowledgement of the original source. These permissions are granted for free by Elsevier for as long as the COVID-19 resource centre remains active.



Review

Occurrence of acute kidney injury in adult patients hospitalized with COVID-19: A systematic review and meta-analysis

Reginaldo Passoni^{a,*}, Tarcísio Vitor Augusto Lordani^{a,b}, Luis Alberto Batista Peres^{c,d}, Ariana Rodrigues da Silva Carvalho^{b,d}

^a Department of Nursing, Teaching Hospital of Western Paraná State University, Cascavel, Paraná, Brazil

^b Collegiate of Nursing, Center for Biological and Health Sciences, Western Paraná State University, Cascavel, Paraná, Brazil

^c Discipline of Nephrology, Undergraduate Course in Medicine, Center for Medical and Pharmaceutical Sciences, Western Paraná State University, Cascavel, Paraná, Brazil

^d Post-graduate Program in Biosciences and Health, Center for Biological and Health Sciences, Western Paraná State University, Cascavel, Paraná, Brazil

ARTICLE INFO

Article history:

Received 30 March 2021

Accepted 13 September 2021

Keywords:

COVID-19

Acute kidney injury

Incidence

Mortality

Continuous renal replacement therapy

Meta-analysis

ABSTRACT

Background and aim: The knowledge about the acute kidney injury (AKI) incidence in patients with coronavirus disease 2019 (COVID-19) can help health teams to carry out a targeted care plan. This study aimed to determine the AKI incidence in patients hospitalized with COVID-19.

Methods: The electronic search covered research published until June 20, 2020, and included five databases, PubMed, Embase, Web of Science, Scopus, and Lilacs (Latin American and Caribbean Health Sciences Library). Eligible studies were those including data from AKI occurrence in adult patients hospitalized with COVID-19. The primary outcome was AKI incidence, and the secondary outcome assessed was the AKI mortality. Additionally, the estimated incidence of renal replacement therapy (RRT) need also was verified. Using a standardized form prepared in Microsoft Excel, data were extracted by two independent authors, regarding the description of studies, characteristics of patients and clinical data on the AKI occurrence.

Results: We included 30 studies in this systematic review, of which 28 were included in the meta-analysis. Data were assessed from 18.043 adult patients with COVID-19. The AKI estimate incidence overall and at the ICU was 9.2% (4.6–13.9) and 32.6% (8.5–56.6), respectively. AKI estimate incidence in the elderly patients and those with acute respiratory disease syndrome was 22.9% (–4.0–49.7) and 4.3% (1.8–6.8), respectively. Patients with secondary infection, AKI estimate incidence was 31.6% (12.3–51.0). The estimate incidence of patients that required RRT was 3.2% (1.1–5.4) and estimate AKI mortality was 50.4% (17.0–83.9).

* Corresponding author.

E-mail address: regipassoni@gmail.com (R. Passoni).

<http://dx.doi.org/10.1016/j.nefro.2022.11.005>

2013-2514/© 2021 Sociedad Española de Nefrología. Published by Elsevier España, S.L.U. This is an open access article under the CC BY-NC-ND license (<http://creativecommons.org/licenses/by-nc-nd/4.0/>).

Conclusion: The occurrence of AKI is frequent among adult patients hospitalized with COVID-19, and affects on average, up to 13.9% of these patients. It is believed that AKI occurs early and in parallel with lung injury.

© 2021 Sociedad Española de Nefrología. Published by Elsevier España, S.L.U. This is an open access article under the CC BY-NC-ND license (<http://creativecommons.org/licenses/by-nc-nd/4.0/>).

Ocurrencia de lesión renal aguda en pacientes adultos hospitalizados con COVID-19: revisión sistemática y metanálisis

R E S U M E N

Palabras clave:

COVID-19
Fracaso renal agudo
Incidencia
Mortalidad
Tratamiento renal sustitutivo
Metaanálisis

Antecedentes y objetivo: El conocimiento de la incidencia de lesión renal aguda (LRA) en pacientes con enfermedad por coronavirus 2019 (COVID-19) puede ayudar a los equipos de atención médica a llevar a cabo un plan de atención específico. Este estudio tuvo como objetivo determinar la incidencia de LRA en pacientes hospitalizados con COVID-19.

Métodos: La búsqueda electrónica cubrió la investigación publicada hasta el 20 de junio del 2020 e incluyó 5 bases de datos: PubMed, Embase, Web of Science, Scopus y Lilacs (Biblioteca de Ciencias de la Salud de América Latina y el Caribe). Los estudios elegibles fueron aquellos que incluyeron datos sobre la aparición de LRA en pacientes adultos hospitalizados con COVID-19. El resultado primario fue la incidencia de LRA y el resultado secundario evaluado fue la mortalidad por LRA. Además, también se verificó la incidencia estimada de necesidad de terapia de reemplazo renal (TRR). Mediante un formulario estandarizado elaborado en Microsoft Excel, los datos fueron extraídos por 2 autores independientes, haciendo referencia a la descripción de los estudios, las características de los pacientes y los datos clínicos sobre la ocurrencia de LRA.

Resultados: En esta revisión sistemática se incluyeron 30 estudios, de los cuales 28 se incluyeron en el metaanálisis. Se evaluaron los datos de 18.043 pacientes adultos con COVID-19. La incidencia estimada de LRA en general y en la UCI fue del 9,2% (4,6-13,9) y del 32,6% (8,5-56,6), respectivamente. La incidencia estimada de LRA en pacientes ancianos y pacientes con síndrome de enfermedad respiratoria aguda fue del 22,9% (-4,0-49,7) y del 4,3% (1,8-6,8), respectivamente. En pacientes con infección secundaria, la incidencia estimada de LRA fue del 31,6% (12,3-51,0). La incidencia estimada de pacientes que requirieron TRR fue del 3,2% (1,1-5,4) y la mortalidad estimada por LRA fue del 50,4% (17,0-83,9).

Conclusión: La ocurrencia de LRA es frecuente en pacientes adultos hospitalizados con COVID-19 y afecta, en promedio, hasta al 13,9% de estos pacientes. Se cree que la LRA ocurre temprano y en paralelo con la lesión pulmonar.

© 2021 Sociedad Española de Nefrología. Publicado por Elsevier España, S.L.U. Este es un artículo Open Access bajo la licencia CC BY-NC-ND (<http://creativecommons.org/licenses/by-nc-nd/4.0/>).

Introduction

Started in December 2019, after setting in Wuhan, China, the SARS-CoV-2 infection, responsible to the illness officially nominated as coronavirus disease 2019 (COVID-19), quickly spread to other regions, affecting several countries worldwide and, at the end of the 2020, on 27 December, the global number of infected and killed individuals by COVID-19 have been over 79.2 and 1.7 million, respectively.¹ Frequent manifestations of COVID-19 include characteristic symptoms of an acute respiratory illness, as fatigue and dry cough, but may also occur others signs and symptoms as dyspnea, whereas acute respiratory distress syndrome (ARDS) is the main pulmonary complication.² As well as the lung, other organs can also be affected, such as the kidney and heart.²⁻⁶

Cheng et al.³ analyzed the occurrence of renal abnormalities in patients with COVID-19 from a Wuhan hospital and observed higher rate proteinuria, elevated serum creatinine and elevated blood urea nitrogen (BUN). The authors reported that the acute kidney injury (AKI) incidence was 5.1% and this complication was significantly associated with worse prognosis. In other large study, involving 5499 patients with COVID-19 from 13 hospitals in the New York metropolitan area,⁴ the AKI incidence was 36.6% and, just like in the Chinese study, the AKI occurrence in the North American patients also was associated with worse outcomes. In addition, the risk factors associated with AKI in this study were advanced age, comorbidities, need for ventilation and drug-associated.

Several studies report the occurrence of AKI and others adverse kidney events in hospitalized patients with

COVID-19.²⁻¹⁰ However, the involvement of kidney and the epidemiological burden of AKI in patients with COVID-19 is still unclear and needs to be better studied.²⁻⁵ Therefore, this study aimed to determine the AKI incidence in patients hospitalized with COVID-19. The results of this systematic review will help healthcare teams to carry out a care plan with greater attention to the kidney function of patients with COVID-19.

Method

Study registration

The report of this systematic review followed the Preferred Reporting Items for Systematic Reviews and Meta-Analyses (PRISMA) checklist¹¹ and the protocol was recorded on the International Prospective Register of Systematic Reviews (PROSPERO – CRD42020187355).

Eligibility criteria

Inclusion criteria

A systematic search was performed to identify studies that reported data from AKI occurrence in adult patients hospitalized with COVID-19. The electronic search occurred between covered research published until June 20, 2020, and included five databases, PubMed, Embase, Web of Science, Scopus, and Lilacs (Latin American and Caribbean Health Sciences Library). In addition, to cover the gray literature, we also performed a manual search by checking the list of references of the reviews found and of the eligible studies (cross-reference). The keywords used were “COVID-19” and “acute kidney injury” and “incidence” or “mortality”, as well as its entry terms. The databases and the gray literature were accessed between June 4 and 8, 2020. The search strategy and the question of this study were structured according to the acronym CoCoP (Condition, Context, Population), of which (Co) was AKI incidence as primary outcome and AKI mortality as secondary outcome; (Co) hospital context; (P) adult patients with COVID-19 (S1 File).

Searches were performed in English, Portuguese, and Spanish. Data were selected in English, Portuguese, and Spanish. Data were also selected from adult (≥ 18 years) patients, hospitalized, with confirmed diagnosis of COVID-19 and that reported data of AKI occurrence and other clinical data associated. Additionally, to avoid selection bias of pairs of studies have been included that use data collected by the same working groups^{3-5,7} in the same period, we verified the possibility that they were the same patients by making personal contact with the authors of the studies and we were not told that they were the same patients.

Exclusion criteria

Thus, studies were excluded that: (1) do not report at least the AKI incidence; (2) included data from children and adolescents; (3) with a very small sample (≤ 10 patients); (4) do not report original data, such as editorials, comments, and other reviews; (5) case reports; (6) with exclusive data from patients with chronic kidney disease (CKD) and/or kidney transplant; (7) study with duplicate data.

Information sources and study selection

Two independent authors (RP, TVAL) performed the search in the databases and assessed the eligibility of the studies, first reading the titles and abstract and, then reading in full the studies with potential for inclusion in this systematic review. Disagreements between the two researchers were resolved by consensus and, in the absence of consensus, a third researcher (ARSC) was consulted. In addition, the list of studies in the final selection, and included in this systematic review was also approved by a fourth researcher (LABP). Duplicate publications were excluded with the support of a reference manager.¹²

Data collection process

Using a standardized form prepared in Microsoft Excel, data were extracted by two independent authors (RP, TVAL), regarding the description of studies, characteristics of patients and clinical data on the AKI occurrence, as described below:

- **Study description:** code (reference number), authors, year, journal, article title, country, study type, length of data collection, number of hospitals, number of patients enrolled and number of patients in the Intensive Care Unit (ICU).
- **Patients' characteristics:** mean age, male gender rate, time between symptom onset and hospitalization, complications (ARDS, acute cardiac injury (ACI), secondary infection, sepsis, or shock), in-hospital mortality rate.
- **AKI occurrence:** definition, AKI overall incidence, AKI incidence in ICU, need of Renal Replacement Therapy (RRT) and AKI mortality. Considering that incidence rates include only the first occurrence, in order to collect only incidence data, cases registered as AKI *de novo* were not considered.

Assessment of risk of bias

The risk of bias of selected studies was assessed by two independent authors (RP, TVAL), using the Checklist for Analytical Cross-Sectional Studies, a Joanna Briggs Institute's critical appraisal tool.¹³ The studies were considered with high, moderate, or low risk of bias when reached a positive (+) score of up to 49% (less than four positive assessments), score of 50–69% (between four and five positive assessments), and score of more than 70% (six or more positive assessments), respectively. The risk of publication bias was assessed using funnel plots. All studies meeting the inclusion criteria at the quantitative analysis were assessed for methodological quality.

Statistical analysis

The primary outcome was AKI incidence, being determined the estimated mean and 95% confidence interval (95% CI). The pooled AKI incidence overall was determined, as well as in the ICU and for the following different subgroups: (1) according to the geographic localization of studies; (2) in the elderly patient (with median or mean age > 60 years); (3) in the patients with early hospitalization (with median or mean of time between symptom onset and hospitalization ≤ 7 days); (4) patients with following complications: (4.1) ARDS; (4.2) ACI; (4.3) with secondary infections without sepsis/shock; (4.4) in the patients with sepsis/shock (with or without other complications). The

secondary outcome assessed was the AKI mortality, also determined by the estimated mean and 95% CI. Additionally, the estimated incidence of RRT need was also verified.

To identify possible factors associated with a higher AKI incidence, the estimated mean and 95% CI of AKI incidence in the patients with age ≤ 60 years and those with median or mean of time between symptom onset and hospitalization > 7 days also determined. In addition, it was assessed the correlation between the incidence rates of AKI and the other complications (ARDS, ACI, secondary infection and sepsis/shock).

All meta-analyses and forest plots were performed in Microsoft Excel, following the step-by-step proposed by Neyeloff et al.¹⁴ The studies heterogeneity was assessed by Higgins inconsistency test (I^2)¹⁵ and those with $I^2 > 50\%$ were analyzed by random-effect model. The correlation tests were performed at software R, version 3.5.0. To perform the analyses, first, the data distribution was assessed (by the Shapiro-Wilk test) and, having found the absence of normality, Spearman correlation tests were applied. Statistically significant correlation was considered when the test p -value was < 0.05 .

Results

Study description

Initially, 462 studies were found, from which 259 were removed for being duplicated. After reading the title and abstract of the remaining articles, 75 eligible publications were read in full, from which 30 were selected to compose this systematic review for meeting the previously established criteria, of which 28 were included in the meta-analysis (Fig. 1), where the two excluded studies were considered outliers and their exclusion from the quantitative analysis occurred to reduce heterogeneity between studies.

All articles were published in 2020 and together included 18,043 adult patients, with COVID-19 and that were hospitalized in 629 hospitals. The majority located in China and the length of data collection was between one and 90 days (Table 1).

Patients' characteristics

In eleven studies^{3,10,25,28,31,33,34} the median or mean age of enrolled patients was greater than 60 years, while the time between symptom onset and hospitalization was longer than 7 days in eight studies.^{3,5,6,22,25,31,32,34} The ARDS, ACI, secondary infection and sepsis/shock complication is reported by 22,^{2,6,8-10,16-20,22,23,25-28,30,31,33-36} 19,^{2,6,10,16-19,21-26,28,30,31,33-35} 12,^{10,17-19,22,23,26-28,30,31,33} and 15 studies,^{2,8-10,16-19,23,26,27,30,31,34,35} respectively (S2 File).

AKI occurrence

From 30 studies included in this systematic review, only two^{20,29} reported that patients did not develop AKI and were not included in the meta-analysis. Among the studies that registered the occurrence of AKI, all used the KDIGO criteria for

the AKI diagnosis and, by the crude analysis of the data, we verified that the overall incidence of the event was between 0.3%⁹ and 69%,³³ while in the ICU the overall AKI incidence was between 2.9%⁸ and 53.2%.⁴ The highest rate of need of RRT was 22.7%.³¹ The crude mortality of patients with COVID-19 and AKI reached 100% in four studies^{19,26,34,35} (Table 2).

By the meta-analysis of the assessed studies, the estimated mean and 95% CI of AKI incidence overall was 9.2% (CI 4.6–13.9%) (Fig. 2) while at the ICU was 32.6% (CI 8.5–56.6%) (Fig. 3), both with a high heterogeneity index ($I^2 = 98.4\%$ and 98.3% , respectively). According to the subgroup analysis, we verified that AKI incidence at USA, elderly patients and those with early hospitalization was 22.9% (CI –2.0–47.8%; $I^2 = 90.8\%$) (S3 File), 22.9% (CI –4.0–49.7%; $I^2 = 90.8\%$) (S4 File) and 11.9% (CI 5.7–18.1%; $I^2 = 99.9\%$) (S5 File), respectively.

Assessing the AKI incidence in the presence of other complications, we verified that in patients with ARDS and ACI the AKI incidence was 4.3% (CI 1.8–6.8%; $I^2 = 91.2\%$) and 9.3% (CI 1.8–16.9%; $I^2 = 79.3\%$) (S6 File), respectively. In addition, the AKI incidence in patients with secondary infection was 31.6% (CI 12.3–51.0%; $I^2 = 57.9\%$), while that in patients with sepsis/shock the AKI incidence was 4.7% (CI 2.1–7.4%; $I^2 = 92\%$) (S7 File). By Spearman correlation test, we identified that ARDS and AKI occurrence present a direct and statistically significant correlation (S8 File).

From 30 studies included in this systematic review 17^{2,4,6,7,10,16-18,22-27,30,31,34} reported data from RRT need and, by meta-analysis we found that 3.2% (CI 1.1–5.4%) of patients with COVID-19 presented RRT need. The assessment of combined mortality of patients with COVID-19 AKI-associated made it possible to determine that the mean proportion of death was 50% (CI 17.0–83.9%) (S9 File).

Risk of bias

No study presented high risk of bias and 23 studies^{2,8-10,18-26,29,30,32,34-36} presented low risk of bias. The main methodological limitations between the studies were related to the lack of information if they identified and dealt with confounding factors (S10 File). The funnel plots (S11 and S12 Files) present the function of sample size of studies with AKI incidence, suggesting a possible risk of publication bias.

Discussion

This systematic review was conducted from a comprehensive search in the main biomedical databases of the world and included 30 studies published until the third week of Jun 2020, which together report data from more than 18,000 patients (table 1). By the meta-analysis from 28 studies, it was verified that 9.2% (CI 4.6–13.9%) of adult patients hospitalized with COVID-19 presented AKI (Fig. 2). Among patients that required admission to ICU the AKI incidence was substantially higher (32.6%, CI 8.5–56.6%) (Fig. 3).

We verified that the meta-analysis of AKI overall and ICU incidence presented high heterogeneity and, possible causes for this may be related to recognized differences among the studies, especially, with regard to design, number of included

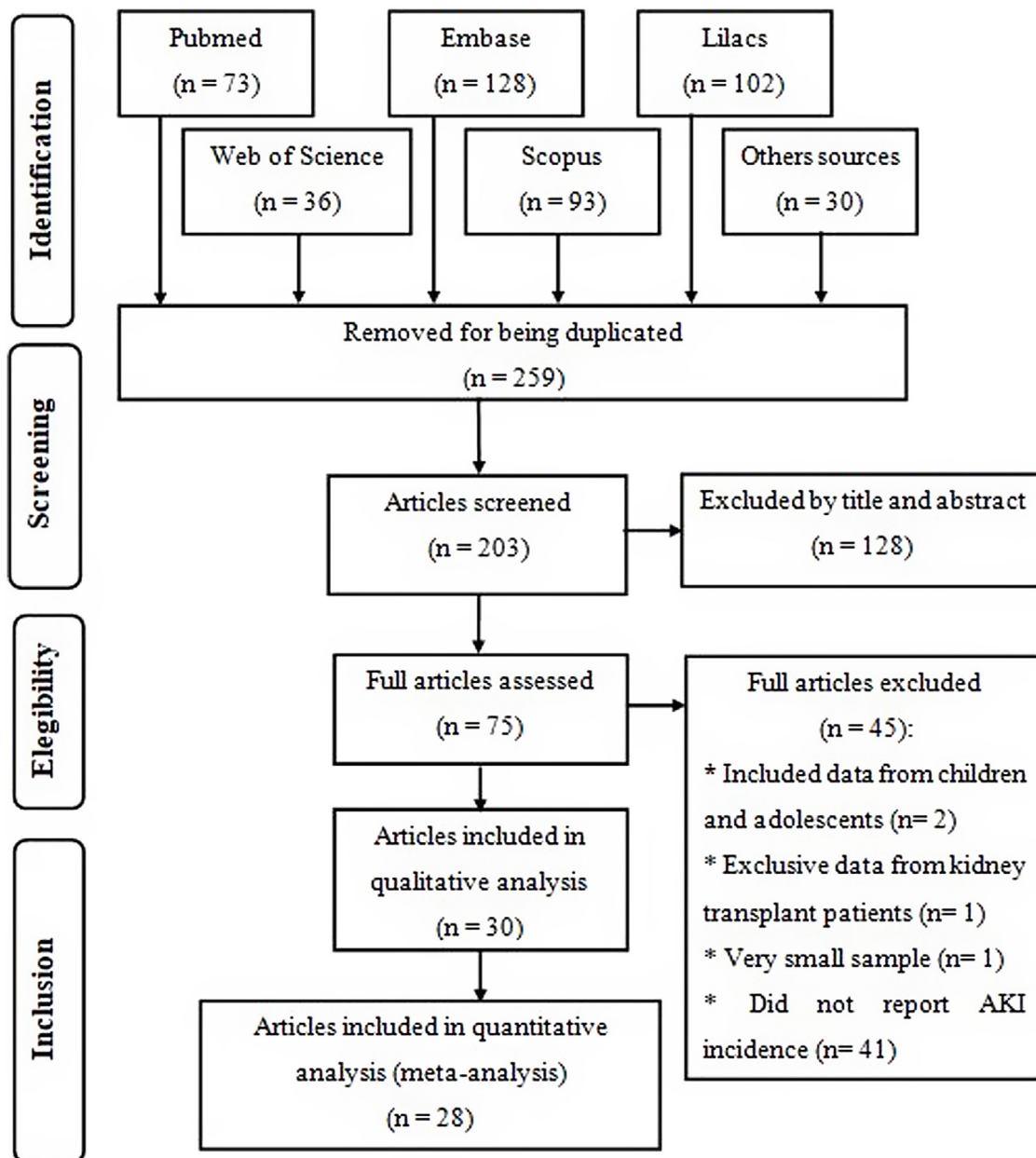


Fig. 1 – Flow diagram of study selection, according to PRISMA checklist.

participants and follow-up time. The number of enrolled patients varied between 16 patients in a single-center retrospective study conducted in the USA³³ and 5700 enrolled in a retrospective multi-center study also conducted in the USA.⁷

In the research of Hirsch et al.,⁴ 53.2% of patients with AKI were in the ICU. Yu et al.¹⁰ assessed 226 critically patients with COVID-19 in 19 ICUs from Wuhan, China, and the AKI incidence was 25.2%. In one study carried out in South Korea, AKI incidence in the ICU was 61.5%.¹⁶

From what is known so far, among the mechanisms involved in the AKI occurrence in patients with COVID-19 is the triggering of the cytokine release syndrome (CRS), also known as “cytokine storm”, with consequent endothelial damage, mitochondrial dysfunction, hypovolemia, and hypercoagulability.^{37,38} Moreover, the direct viral damage,

mediated by co-expression and activity of angiotensin-converting enzyme 2 (ACE2) and cellular transmembrane serine proteases (TMPRSSs), can cause kidney damage cells and apoptosis, especially, in podocytes and proximal straight tubule cells.^{39,40}

These multiple pathophysiological depletions can be observed in the clinical practice by identifying some renal abnormalities.^{3,7,21,32,37} By data analysis of 333 patients, Pei et al.³² observed that 75.4% presented renal abnormalities, being proteinuria and hematuria the most frequent. These are also the most frequent abnormalities observed in the research of Cheng et al.³ Furthermore, data from other studies in which the AKI occurrence were reported also showed that the patients had elevated levels of serum creatinine and BUN.^{4,8,16,17,21,26,27,30,31}

Table 1 – Features and description of studies selected.

Reference	Country	Study design	Length of data collection (days)	Number of hospitals	Patients enrolled	ICU patients n (%)
Wang et al. ²	China	Retrospective	28	1	138	36 (26.1)
Cheng et al. ³	China	Prospective	29	1	701	73 (10.4)
Hirsch et al. ⁴	USA	Retrospective multi-center	36	13	5,449	1,395 (25.6)
Cheng et al. ⁵	China	Retrospective multi-center	14	3	710	...
Shi et al. ⁶	China	Retrospective	21	1	416	...
Richardson et al. ⁷	USA	Retrospective multi-center	35	12	5,700	373 (14.2)
Guan et al. ⁸	China	Prospective multi-center	51	552	1,099	173 (15.7)
Zhang et al. ⁹	China	Retrospective	23	1	645	4 (0.6)
Yu et al. ¹⁰	China	Prospective multi-center	1	16	226	All
Hong et al. ¹⁶	South Korea	Retrospective	90	1	98	13 (13.3)
Huang et al. ¹⁷	China	Prospective	17	1	41	13 (31.7)
Lei et al. ¹⁸	China	Retrospective multi-center	35	4	34	15 (44.1)
Wang et al. ¹⁹	China	Retrospective multi-center	41	2	107	...
Wang et al. ²⁰	China	Retrospective	30	1	116	11 (9.5)
Yang et al. ²¹	China	Retrospective	65	1	212	...
Yang et al. ²²	China	Retrospective	34	1	52	All
Zhang et al. ²³	China	Retrospective	41	1	221	55 (24.9)
Zhao et al. ²⁴	China	Retrospective	25	1	91	30 (33.0)
Zheng et al. ²⁵	China	Retrospective	42	1	34	All
Zhou et al. ²⁶	China	Retrospective multi-center	33	2	191	50 (26.0)
Chen et al. ²⁷	China	Retrospective	20	1	99	23 (23.0)
Arentz et al. ²⁸	USA	Retrospective	14	1	21	All
Yang et al. ²⁹	China	Retrospective multi-center	24	3	149	0 (0)
Wan et al. ³⁰	China	Retrospective	16	1	135	40 (29.6)
Hu et al. ³¹	China	Retrospective	62	1	323	172 (53.3)
Pei et al. ³²	China	Retrospective	12	1	333	189 (56.8)
Aggarwal et al. ³³	USA	Retrospective	35	1	16	8 (50.)
Chen et al. ³⁴	China	Retrospective	46	1	274	...
Deng et al. ³⁵	China	Retrospective multi-center	51	2	225	...
Guo et al. ³⁶	China	Retrospective	31	1	187	...
Descriptive summary	China 25 studies; USA 4 studies; South Korea 1 study.	Retrospective single-center: 18 studies; Retrospective multi-center: 8 studies; Prospective single-center: 02 studies; Prospective multi-center: 02 studies.	Mean ± SD sample: 33.4 ± 18.0 days	Total: 629 hospitals	Total: 18,043 patients with COVID-19	Total: 3006 patients in the ICU

We performed subgroup analyses to minimize the high heterogeneity observed in the global analysis (with all studies included) Even so, the high heterogeneity remained in the subgroup analysis. Even grouping the studies in which the patients had similar characteristics, the difference in the number of patients enrolled, possibly, was the main cause of maintaining high heterogeneity.

According to geographic location of these COVID-19 cases, the AKI estimate incidence was vastly higher at USA (22.9%

[CI -2.0–47.8%]) than China (3.9 [CI 1.7–6.2%]) (S3 File). This expressive difference in the AKI incidence between the two countries, could be explained at least in part, by the fact that Occidental populations have a more pronounced expression of the receptor ACE2 in podocytes and proximal straight tubule cells.³⁹ Hirsch et al.⁴ identified higher AKI incidence among black (20.8%) and white (41%) patients than in Asians (8.1%). However, other epidemiological and experimental studies, including data with patients

Table 2 – Data from AKI occurrence reported by studies selected.

Reference	AKI definition	AKI incidence		Need of RRTN (%)	AKI mortality	
		Overall N (%)	ICU N (%)		Overall (%)	In RRT N (%)
Wang et al. ²	KDIGO	5 (3.6)	3 (8.3)	2 (1.45)
Cheng et al. ³	KDIGO	36 (5.1)
Hirsch et al. ⁴	KDIGO	1993 (36.6) [Stage 1 = 927 (46.5); Stage 2 = 447 (22.4); Stage 3 = 619 (31.1)]	1060 (53.2) [Stage 1 = 320 (34.5); Stage 2 = 244 (54.6); Stage 3 = 496 (80.1)]	285 (14.3)	694 (35)	...
Cheng et al. ⁵	KDIGO-sCr	22 (3.2) [Stage 1 = 8 (1.3); Stage 2 = 6 (0.8); Stage 3 = 8 (1.1)]
Shi et al. ⁶	KDIGO	8 (1.9)	...	2 (0.5)
Richardson et al. ⁷	KDIGO-sCr	523 (22.2)	...	81 (3.2)	347 (66.3)	...
Guan et al. ⁸	KDIGO	6 (0.5)	5 (2.9)	9 (0.8)
Zhang et al. ⁹	...	2 (0.3)	...	0 (0)
Yu et al. ¹⁰	KDIGO	57 (25.2) [Stage 1 = 23 (10.2); Stage 2 = 12 (5.3); Stage 3 = 22 (9.7)]	57 (25.2)	24 (10.6)
Hong et al. ¹⁶	KDIGO	9 (9.2)	8 (61.5)	3 (3.1)
Huang et al. ¹⁷	KDIGO	3 (7)	3 (23)	3 (7)
Lei et al. ¹⁸	KDIGO	2 (5.9)	2 (13.3)	1 (2.9)
Wang et al. ¹⁹	KDIGO	14 (13.1)	14 (100)	...
Wang et al. ²⁰	KDIGO	0 (0)
Yang et al. ²¹	KDIGO	28 (13.7)	10 (35.7)	...
Yang et al. ²²	KDIGO-sCr	15 (29)	15 (29)	9 (17)	12 (37.5)	8 (25)
Zhang et al. ²³	...	10(4.5)	8 (14.5)	5 (2.3)
Zhao et al. ²⁴	elevated sCr and uric acid levels	5 (5.5)	5 (16.7)	3 (3.3)
Zheng et al. ²⁵	KDIGO	7 (20.6)	7 (20.6)	5 (14.7)
Zhou et al. ²⁶	KDIGO	28 (15)	...	10 (5)	27 (96.4)	10 (100)
Chen et al. ²⁷	...	3 (3)	...	9 (9)
Arentz et al. ²⁸	KDIGO-sCr	4 (19.1)
Yang et al. ²⁹	...	0 (0)
Wan et al. ³⁰	...	5 (3.7)	1 (2.5)	5 (3.7)
Hu et al. ³¹	...	17 (5.3)	15 (8.7)	72 (22.3)
Pei et al. ³²	KDIGO and KDIGO-exp	KDIGO: 22 (6.6) [Stage 1 = 4 (18.2); Stage 2 = 7 (31.8); Stage 3 = 11 (50)]; KDIGO-exp: 35 (10.5) [Stage 1 = 16 (45.7); Stage 2 = 8 (22.9); Stage 3 = 11 (31.4)]	30 (15.9)	...	KDIGO: 20 (57.1) [Stage 1 = 4 (25); Stage 2 = 6 (75); Stage 3 = 10 (90.9)]; KDIGO-exp: 19 (86.4) [Stage 1 = 3 (75); Stage 2 = 6 (85.7); Stage 3 = 10 (90.9)	...
Aggarwal et al. ³³	...	11 (69)	3 (38)
Chen et al. ³⁴	KDIGO	29 (11)	...	3 (1)	28 (96.6)	3 (100)
Deng et al. ³⁵	...	20 (8.9)	20 (100)	...
Guo et al. ³⁶	...	18 (14.6)

Footnote: KDIGO-sCr: Only the serum creatinine of KDIGO criteria; KDIGO-exp: KDIGO with expanded criteria; Legend: AKI: acute kidney injury; ICU: intensive care unit; RRT: renal replacement therapy; KDIGO: Kidney Disease Global Improving Outcomes; sCr: serum creatinine.

from different races are needed to confirm this preliminary evidence.

In this systematic review, high AKI incidence was also found among elderly (S4 File) and patients with early hospitalization (S5 File). Hirsch et al.⁴ identified that advanced age is an independent risk factor for AKI, and the highest incidence of this complication on COVID-19 patients was verified

in the first days of hospitalization. Yang et al.²¹ highlighted that elderly patients had a worse prognosis after COVID-19 infection and 14% of patients with hospitalization ≤ 7 days had essential organ injury, including AKI.

Thereby, AKI incidence seems to be linked to the shorter onset time of COVID-19, given by time between symptoms onset and hospitalization. Pan et al.³⁹ report that

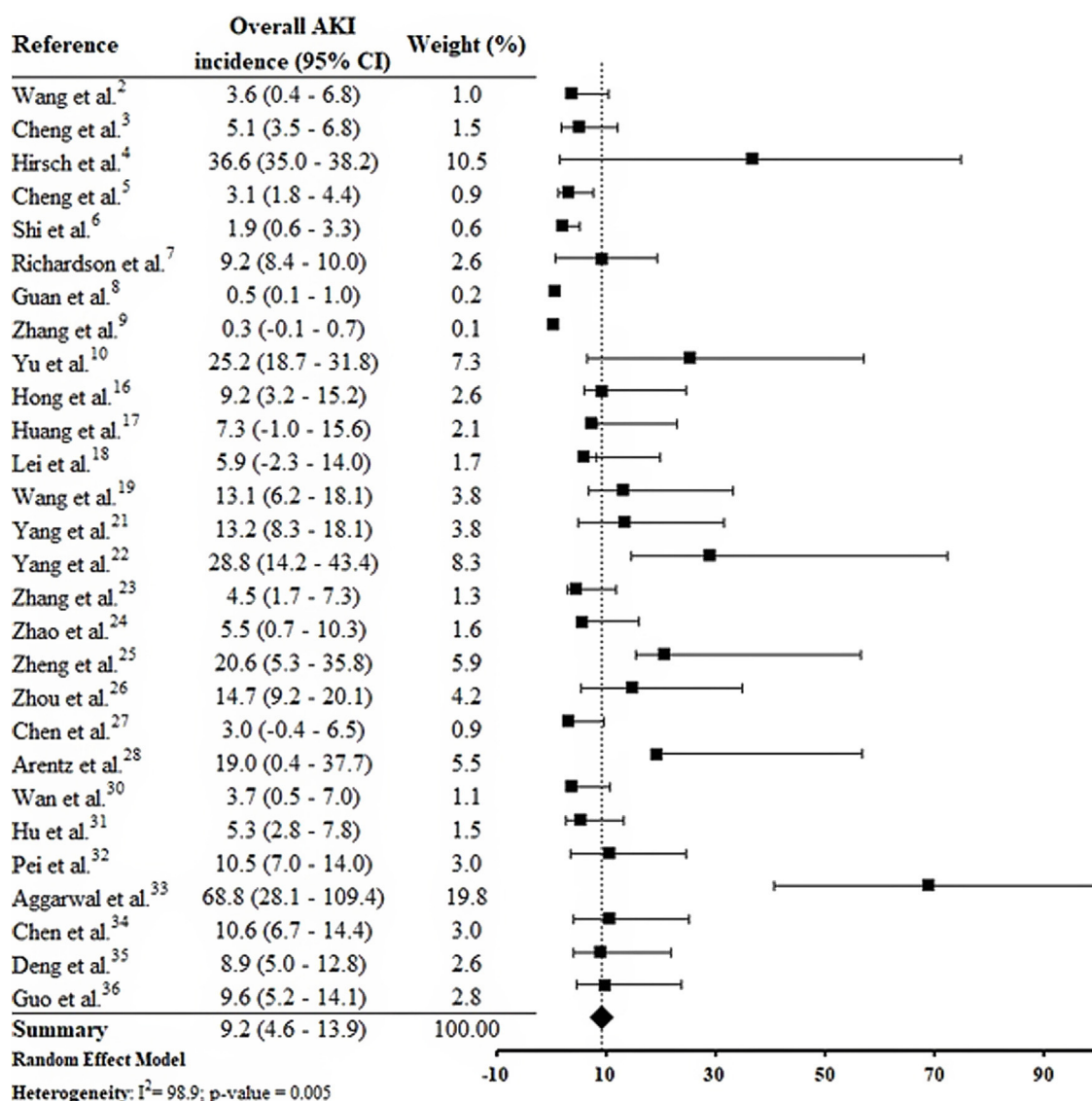


Fig. 2 – Forest plot of included studies showing the estimated overall AKI incidence in patients hospitalized with COVID-19.

co-expression of the ACE2 and TMPRSS genes in kidney cells were similar to that seen in the lung and other organs. In addition, the authors highlight that the time between detection of COVID-19 in blood and AKI occurrence was around one week.

Based on the findings of this study and in the literature, it is reasonable to believe that the AKI occurrence in adult patients hospitalized with COVID-19 is as early as acute respiratory failure, and the health team must be attentive to the predictive signs of AKI occurrence, as described in KDIGO (Kidney Disease: Improving Global Outcomes) guidelines for care guidance aiming the early diagnosis and treatment.^{3,32,37}

AKI incidence among patients with ARDS (4.3% [CI 1.8–6.8%]) was lower than in those with ACI (9.3% [CI 1.8–16.9%]) (S6 File). By the correlations test, ARDS and ACI showed a direct and statistically significant correlation of greater strength with the AKI incidence (S8 File). Shi et al.⁶ verified that ACI, with an incidence of 19.7%, was significantly associated with AKI (8.5%) and ARDS (58.5%) incidences. In a study performed by Guo et al.³⁶ with patients from Wuhan, China, the authors

observed that myocardial injury was significantly associated with worse outcome. In addition, the AKI and ARDS incidences were higher in patients with elevated troponin T levels, compared to those with normal levels.

In a robust study from the USA, the need for mechanical ventilation (one of the ARDS consequences), as well as cardiovascular disease (including heart failure) were significant risk factors for AKI occurrence.⁴ In the COVID-19 infection, injury in the lung-kidney-heart triad is associated with direct viral damage due to high local expression of ACE2 receptor, resulting in organ crosstalk (as alveolar damage, renal compartment syndrome, cardiomyopathy, cardiorenal syndrome and tubular toxicity) and systemic effects.

AKI estimate incidence in patients with secondary infection was 31.6% (CI 12.3–51.0%) and among those sepsis/shock was 4.7% (CI 2.1–7.4%) (S7 File). In the correlation tests, the incidence of these complications was also directly proportional to the AKI incidence (S9 File). Among selected studies, the rates of secondary infection and sepsis/shock were between 2.8%³⁰

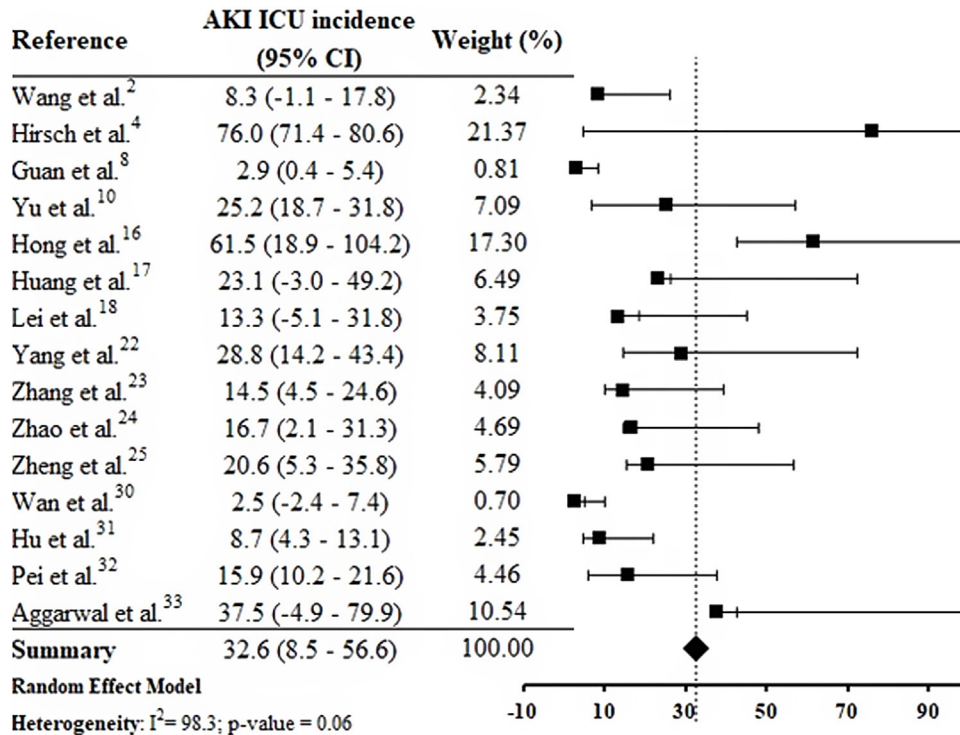


Fig. 3 – Forest plot of included studies showing the estimated AKI ICU incidence in patients hospitalized with COVID-19.

and 75%³³ and between 0.3%⁹ and 65%,³⁴ respectively. These complications result in hemodynamic instability, contributing to the increased need for RRT and the mortality rate among patients.³⁷⁻⁴⁰

We emphasize that the studies included in this review present data collected at the beginning of the pandemic, when there were still many uncertainties about the pathophysiological mechanisms involved in the occurrence of AKI in patients with COVID-19. Thus, the possible difficulty in identifying the occurrence of AKI in critically ill patients with sepsis/shock before they died may, at least in part, justify the low incidence of AKI in patients with COVID-19 and sepsis/shock, compared to those with secondary infection. Therefore, we encourage the conduction of other review studies like this one, to identify possible changes in the current epidemiological profile of AKI in patients with COVID-19 compared to what we present in this review, which brings data from studies conducted at the beginning of the pandemic.

The estimated proportion of RRT need was 3.2% (CI 1.1-5.4%) and the estimated incidence of mortality was 50.4% (CI 17.0-83.9%) (S12). Continuous RRT (CRRT) was the predominant dialysis technique reported by studies. Hu et al.³¹ reports that 22.3% of patients studied required CRRT and, among those that required ICU admission the CRRT rate was 26.7%. The rate of death in AKI was between 35.7%²¹ and 100%,^{19,35} and the mortality rate was higher among patients who required CRRT.^{26,34}

Recommendations for practice and for research

Viral tropism of SARS-CoV-2 is believed to be among the main causes of direct kidney damage. Thus, early recognition of AKI

episodes in patients with COVID-19 is even more essential to avoid the rapid progression of the disease and the negative outcome. It is recommended that patients be stratified for AKI risk based on the presence of comorbidities, demographic data, and clinical conditions, establishing the monitoring of renal function from hospital admission and continuously during hospitalization.

Considering the lack of specific treatment for AKI in COVID-19, instituting intensive care support is among the most favorable existing options, especially among patients with severe COVID-19.^{4,37,38,40} Based on clinical experience, it is suggested that instituting extracorporeal therapies may assist in removing cytokines as well as can be usefulness for minimizing the organ crosstalk and systemic effects.^{37,38} However, considering the high demand, the lack of structure and technological resources (dialysis machines) and human resources (specialized team in nephrology) can be a reality experienced by many countries. Thus, promoting prevention strategies and early identification of AKI, in order to prevent this complication from progressing, is the gold standard of care. To improve the quality of kidney care, the 25th Acute Disease Quality Initiative (ADQI) consensus report presents recommendations for management of AKI associated with COVID-19.⁴¹

A better understanding of the mechanisms involved in the occurrence of AKI in patients with COVID-19 is still needed. It is recommended that patients with AKI associated to COVID-19 be evaluated for the course and time of AKI. It is necessary to develop robust scientific studies with high methodological rigor, to verify whether the risk factors for AKI in COVID-19 differ from those already known, as well as to know the factors associated with the recovery of renal function in the short and long term. In addition, knowing the epidemiological burden

of AKI in patients who, in addition to COVID-19, already have previous conditions of vulnerability (CKD, cancer, other infectious diseases, transplants, surgeries and others) is equally important.

Limitations

This systematic review and meta-analysis have some limitations. First, the most selected studies were from China and with considerable risk of methodological biases once they come from retrospective case series or observational analysis. In addition, most studies report data from a restricted sample of patients. The funnel plots (S11 and S12 Files) suggest a possible publication bias and bias related, especially to the fact that most studies were not designed to assess AKI incidence and, as consequences, the definition of AKI was unclear in most of these studies. Although KDIGO was reported as being used in several studies, information regarding rate and definition of baseline serum creatinine, urine output criteria or period of observation to define AKI were not described. In the analyses of the studies included in this systematic review we focused our efforts on identifying the incidence of AKI and, because of that, we did not collect data on risk factors for AKI occurrence. Thus, we recommend that future studies include such an analysis to better understand the epidemiology of AKI in COVID-19.

Conclusions

The occurrence of AKI is frequent among adult patients hospitalized with COVID-19, and affects on average, up to 13.9% of these patients. It is believed that AKI occurs early and in parallel with lung injury. The elderly population, with acute cardiac injury and secondary infection, is among the group at highest risk for AKI.

Funding

This research received no specific grant from any funding agency in the public, commercial, or not-for-profit sectors.

Conflict of interests

The authors declare that there is no conflict of interest.

Appendix A. Supplementary data

Supplementary data associated with this article can be found, in the online version, at [doi:10.1016/j.nefro.2021.09.002](https://doi.org/10.1016/j.nefro.2021.09.002).

REFERENCES

- World Health Organization Coronavirus disease (COVID-2019) situation reports [Internet]. Available from: <https://www.who.int/emergencies/diseases/novel-coronavirus-2019/situation-reports> [accessed 3.7.20].
- Wang D, Hu B, Hu C, Zhu F, Liu X, Zhang J, et al. Clinical characteristics of 138 hospitalized patients with 2019 novel coronavirus-infected pneumonia in Wuhan, China. *JAMA*. 2020;323:1061–9, <http://dx.doi.org/10.1001/jama.2020.1585>.
- Cheng Y, Luo R, Wang K, Zhang M, Wang Z, Dong L, et al. Kidney disease is associated with in-hospital death of patients with COVID-19. *Kidney Int*. 2020;97:829–38, <http://dx.doi.org/10.1016/j.kint.2020.03.005>.
- Hirsch JS, Ng JH, Ross DW, Sharma P, Shah HH, Barnett RL, et al. Acute kidney injury in patients hospitalized with COVID-19. *Kidney Int*. 2020;98:209–18, <http://dx.doi.org/10.1016/j.kint.2020.05.006>.
- Cheng Y, Luo R, Wang K, Zhang M, Wang Z, Dong L, et al. Kidney impairment is associated with in-hospital death of COVID19 patients. medRxiv. 2020, <http://dx.doi.org/10.1101/2020.02.18.20023242>.
- Shi S, Qin M, Shen B, Cai Y, Liu T, Yang F, et al. Association of cardiac injury with mortality in hospitalized patients with COVID-19 in Wuhan China. *JAMA Cardiol*. 2020:e200950, <http://dx.doi.org/10.1001/jamacardio.2020.0950>.
- Richardson S, Hirsch JS, Narasimhan M, Crawford JM, McGinn T, Davidson KW, et al. Presenting characteristics, comorbidities, and outcomes among 5700 patients hospitalized with COVID-19 in the New York City area. *JAMA*. 2020;323:2052–9, <http://dx.doi.org/10.1001/jama.2020.6775>.
- Guan WJ, Ni ZY, Hu Y, Liang WH, Ou CQ, He JX, et al. Clinical characteristics of coronavirus disease 2019 in China. *N Engl J Med*. 2020;382:1708–20, <http://dx.doi.org/10.1056/NEJMoa2002032>.
- Zhang X, Cai H, Hu J, Lian J, Gu J, Zhang S, et al. Epidemiological, clinical characteristics of cases of SARS-CoV-2 infection with abnormal imaging findings. *Int J Infect Dis*. 2020;94:81–7, <http://dx.doi.org/10.1016/j.ijid.2020.03.040>.
- Yu Y, Xu D, Fu S, Zhang J, Yang X, Xu L, et al. Patients with COVID-19 in 19 ICUs in Wuhan, China: a cross-sectional study. *Crit Care*. 2020;24:219, <http://dx.doi.org/10.1186/s13054-020-02939-x>.
- Liberati A, Altman DG, Tetzlaff J, Mulrow C, Gotzsche PC, Ioannidis JPA, et al. The prisma statement for reporting systematic reviews and meta-analyses of studies that evaluate healthcare interventions: explanation and elaboration. *BMJ*. 2009;339:b2700, <http://dx.doi.org/10.1136/bmj.b2700>.
- Thomson Reuters. Endnoteweb. 2016 [Internet] Available from: <https://joannabriggs.org/critical-appraisal-tools>
- The Joanna Briggs institute. Critical appraisal tools: checklist for analytical cross sectional studies; 2020 [Internet]. Available from: <https://joannabriggs.org/critical-appraisal-tools>
- Neyeloff JL, Fuchs SC, Moreira LB. Meta-analyses and Forest plots using a microsoft excel spreadsheet: step-by-step guide focusing on descriptive data analysis. *BMC Res Notes*. 2012;5:52, <http://dx.doi.org/10.1186/1756-0500-5-52>.
- Higgins JP, Thompson SG, Deeks JJ, Altman DG. Measuring inconsistency in meta-analyses. *BMJ*. 2003;327:557–60, <http://dx.doi.org/10.1136/bmj.327.7414.557>.
- Hong KS, Lee KH, Chung JH, Shin KC, Choi EY, Jin HJ, et al. Clinical features and outcomes of 98 patients hospitalized with SARS-CoV-2 infection in Daegu South Korea: a brief descriptive study. *Yonsei Med J*. 2020;61:431–7, <http://dx.doi.org/10.3349/ymj.2020.61.5.431>.
- Huang C, Wang Y, Li X, Ren L, Zhao J, Hu Y, et al. Clinical features of patients infected with 2019 novel coronavirus in Wuhan, China. *Lancet*. 2020;395:497–506, [http://dx.doi.org/10.1016/S0140-6736\(20\)30183-5](http://dx.doi.org/10.1016/S0140-6736(20)30183-5).
- Lei S, Jiang F, Su W, Chen C, Chen J, Mei W, et al. Clinical characteristics and outcomes of patients undergoing surgeries during the incubation period of COVID-19 infection.

- EClinicalMedicine. 2020;21:100331, <http://dx.doi.org/10.1016/j.eclinm.2020.100331>.
19. Wang D, Yin Y, Hu C, Liu X, Zhang X, Zhou S, et al. Clinical course and outcome of 107 patients infected with the novel coronavirus, SARS-CoV-2, discharged from two hospitals in Wuhan, China. *Crit Care*. 2020;24:188, <http://dx.doi.org/10.1186/s13054-020-02895-6>.
 20. Wang L, Li X, Chen H, Yan S, Li D, Li Y, et al. Coronavirus disease 19 infection does not result in acute kidney injury: an analysis of 116 hospitalized patients from Wuhan, China. *Am J Nephrol*. 2020;51:343–8, <http://dx.doi.org/10.1159/000507471>.
 21. Yang R, Gui X, Zhang Y, Xiong Y. The role of essential organ-based comorbidities in the prognosis of COVID-19 infection patients. *Expert Rev Respir Med*. 2020:1–4, <http://dx.doi.org/10.1080/17476348.2020.1761791>.
 22. Yang X, Yu Y, Shu H, Xia J, Liu H, Wu Y, et al. Clinical course and outcomes of critically ill patients with SARS-CoV-2 pneumonia in Wuhan China: a single-centered, retrospective, observational study. *Lancet Respir Med*. 2020;8:475–81, [http://dx.doi.org/10.1016/S2213-2600\(20\)30079-5](http://dx.doi.org/10.1016/S2213-2600(20)30079-5).
 23. Zhang G, Hu C, Luo L, Fang F, Chen Y, Li J, et al. Clinical features and short-term outcomes of 221 patients with COVID-19 in Wuhan, China. *J Clin Virol*. 2020;127:104364, <http://dx.doi.org/10.1016/j.jcv.2020.104364>.
 24. Zhao X, Xu X, Yin H, Hu Q, Xiong T, Tang Y, et al. Clinical characteristics of patients with 2019 coronavirus disease in a non-Wuhan area of Hubei Province China: a retrospective study. *BMC Infect Dis*. 2020;20:311, <http://dx.doi.org/10.1186/s12879-020-05010-w>.
 25. Zheng Y, Sun L, Xu M, Pan J, Zhang Y, Fang X, et al. Clinical characteristics of 34 COVID-19 patients admitted to intensive care unit in Hangzhou, China. *J Zhejiang Univ Sci B*. 2020;21:378–87, <http://dx.doi.org/10.1631/jzus.B2000174>.
 26. Zhou F, Yu T, Du R, Fan G, Liu Y, Liu Z, et al. Clinical course and risk factors for mortality of adult inpatients with COVID-19 in Wuhan, China: a retrospective cohort study. *Lancet*. 2020;395:1054–62, [http://dx.doi.org/10.1016/S0140-6736\(20\)30566-3](http://dx.doi.org/10.1016/S0140-6736(20)30566-3).
 27. Chen N, Zhou M, Dong X, Qu J, Gong F, Han Y, et al. Epidemiological and clinical characteristics of 99 cases of 2019 novel coronavirus pneumonia in Wuhan, China: a descriptive study. *Lancet*. 2020;395:507–13, [http://dx.doi.org/10.1016/S0140-6736\(20\)30211-7](http://dx.doi.org/10.1016/S0140-6736(20)30211-7).
 28. Arentz M, Yim E, Klaff L, Lokhandwala S, Ried FX, Chong M, et al. Characteristics and outcomes of 21 critically ill patients with COVID-19 in Washington State. *JAMA*. 2020;323:1612–4, <http://dx.doi.org/10.1001/jama.2020.4326>.
 29. Yang W, Cao Q, Qin L, Wang X, Cheng Z, Pan A, et al. Clinical characteristics and imaging manifestations of the 2019 novel coronavirus disease (COVID-19): a multi-center study in Wenzhou city, Zhejiang China. *J Infect*. 2020;80:388–93, <http://dx.doi.org/10.1016/j.jinf.2020.02.016>.
 30. Wan S, Xiang Y, Fang W, Zheng Y, Li B, Hu Y, et al. Clinical features and treatment of COVID-19 patients in northeast Chongqing. *J Med Virol*. 2020;92:797–806, <http://dx.doi.org/10.1002/jmv.25783>.
 31. Hu L, Chen S, Fu Y, Gao Z, Long H, Wang J, et al. Risk factors associated with clinical outcomes in 323 COVID-19 hospitalized patients in Wuhan, China. *Clin Infect Dis*. 2020:ciaa539, <http://dx.doi.org/10.1093/cid/ciaa539>.
 32. Pei G, Zhang Z, Peng J, Liu L, Zhang C, Yu C, et al. Renal involvement and early prognosis in patients with COVID-19 pneumonia. *J Am Soc Nephrol*. 2020;31:1157–65, <http://dx.doi.org/10.1681/ASN.2020030276>.
 33. Aggarwal S, Garcia-Telles N, Aggarwal G, Lavie C, Lippi G, Henry BM. Clinical features, laboratory characteristics, and outcomes of patients hospitalized with coronavirus disease 2019 (COVID-19): early report from the United States. *Diagnosis (Berl)*. 2020;7:91–6, <http://dx.doi.org/10.1515/dx-2020-0046>.
 34. Chen T, Wu D, Chen H, Yan W, Yang D, Chen G, et al. Clinical characteristics of 113 deceased patients with coronavirus disease 2019: retrospective study. *BMJ*. 2020;368:m1091, <http://dx.doi.org/10.1136/bmj.m1091>.
 35. Deng Y, Liu W, Liu K, Fang Y, Shang J, Zhou L, et al. Clinical characteristics of fatal and recovered cases of coronavirus disease 2019 in Wuhan China: a retrospective study. *Chin Med J (Engl)*. 2020;133:1261–7, <http://dx.doi.org/10.1097/CM9.0000000000000824>.
 36. Guo T, Fan Y, Chen M, Wu X, Zhang L, He T, et al. Cardiovascular implications of fatal outcomes of patients with Coronavirus Disease 2019 (COVID-19). *JAMA Cardiol*. 2020;5:1–8, <http://dx.doi.org/10.1001/jamacardio.2020.1017>.
 37. Ronco C, Reis T. Kidney involvement in COVID-19 and rationale for extracorporeal therapies. *Nat Rev Nephrol*. 2020;16:308–10, <http://dx.doi.org/10.1038/s41581-020-0284-7>.
 38. Ronco C, Reis T, Husain-Syed F. Management of acute kidney injury in patients with COVID-19. *Lancet Respir Med*. 2020;8:738–42, [http://dx.doi.org/10.1016/S2213-2600\(20\)30229-0](http://dx.doi.org/10.1016/S2213-2600(20)30229-0).
 39. Pan X, Xu D, Zhang H, Zhou W, Wang L, Gui X. Identification of a potential mechanism of acute kidney injury during the COVID-19 outbreak: a study based on single-cell transcriptome analysis. *Intensive Care Med*. 2020;46:1114–6, <http://dx.doi.org/10.1007/s00134-020-06026-1>.
 40. Batlle D, Soler MJ, Sparks MA, Hiremath S, South AM, Welling PA, et al. Acute kidney injury in COVID-19: emerging evidence of a distinct pathophysiology. *J Am Soc Nephrol*. 2020;31:1380–3, <http://dx.doi.org/10.1681/ASN.2020040419>.
 41. Nadim MK, Forni LG, Mehta RL, Connor MJ Jr, Liu KD, Ostermann M, et al. COVID-19-associated acute kidney injury: consensus report of the 25th Acute Disease Quality Initiative (ADQI) Workgroup. *Nat Rev Nephrol*. 2020;16:747–64, <http://dx.doi.org/10.1038/s41581-020-00356-5>.