



Review

# Synthetic, Cell-Derived, Brain-Derived, and Recombinant $\beta$ -Amyloid: Modelling Alzheimer's Disease for Research and Drug Development

Kseniya B. Varshavskaya, Vladimir A. Mitkevich , Alexander A. Makarov \* and Evgeny P. Barykin

Engelhardt Institute of Molecular Biology, Vavilov St. 32, 119991 Moscow, Russia

\* Correspondence: aamakarov@eimb.ru

**Abstract:** Alzheimer's disease (AD) is the most common cause of dementia in the elderly, characterised by the accumulation of senile plaques and tau tangles, neurodegeneration, and neuroinflammation in the brain. The development of AD is a pathological cascade starting according to the amyloid hypothesis with the accumulation and aggregation of the  $\beta$ -amyloid peptide ( $A\beta$ ), which induces hyperphosphorylation of tau and promotes the pro-inflammatory activation of microglia leading to synaptic loss and, ultimately, neuronal death. Modelling AD-related processes is important for both studying the molecular basis of the disease and the development of novel therapeutics. The replication of these processes is often achieved with the use of a purified  $A\beta$  peptide. However,  $A\beta$  preparations obtained from different sources can have strikingly different properties. This review aims to compare the structure and biological effects of  $A\beta$  oligomers and aggregates of a higher order: synthetic, recombinant, purified from cell culture, or extracted from brain tissue. The authors summarise the applicability of  $A\beta$  preparations for modelling  $A\beta$  aggregation, neurotoxicity, cytoskeleton damage, receptor toxicity in vitro and cerebral amyloidosis, synaptic plasticity disruption, and cognitive impairment in vivo and ex vivo. Further, the paper discusses the causes of the reported differences in the effect of  $A\beta$  obtained from the sources mentioned above. This review points to the importance of the source of  $A\beta$  for AD modelling and could help researchers to choose the optimal way to model the  $A\beta$ -induced abnormalities.

**Keywords:** Alzheimer's disease; beta-amyloid peptide; post-translational modification; amyloidogenesis; NMDAR; tau; LTP; toxic oligomers; amyloid fibrils



**Citation:** Varshavskaya, K.B.; Mitkevich, V.A.; Makarov, A.A.; Barykin, E.P. Synthetic, Cell-Derived, Brain-Derived, and Recombinant  $\beta$ -Amyloid: Modelling Alzheimer's Disease for Research and Drug Development. *Int. J. Mol. Sci.* **2022**, *23*, 15036. <https://doi.org/10.3390/ijms232315036>

Academic Editor: Alberto Pérez-Mediavilla

Received: 1 November 2022

Accepted: 29 November 2022

Published: 30 November 2022

**Publisher's Note:** MDPI stays neutral with regard to jurisdictional claims in published maps and institutional affiliations.

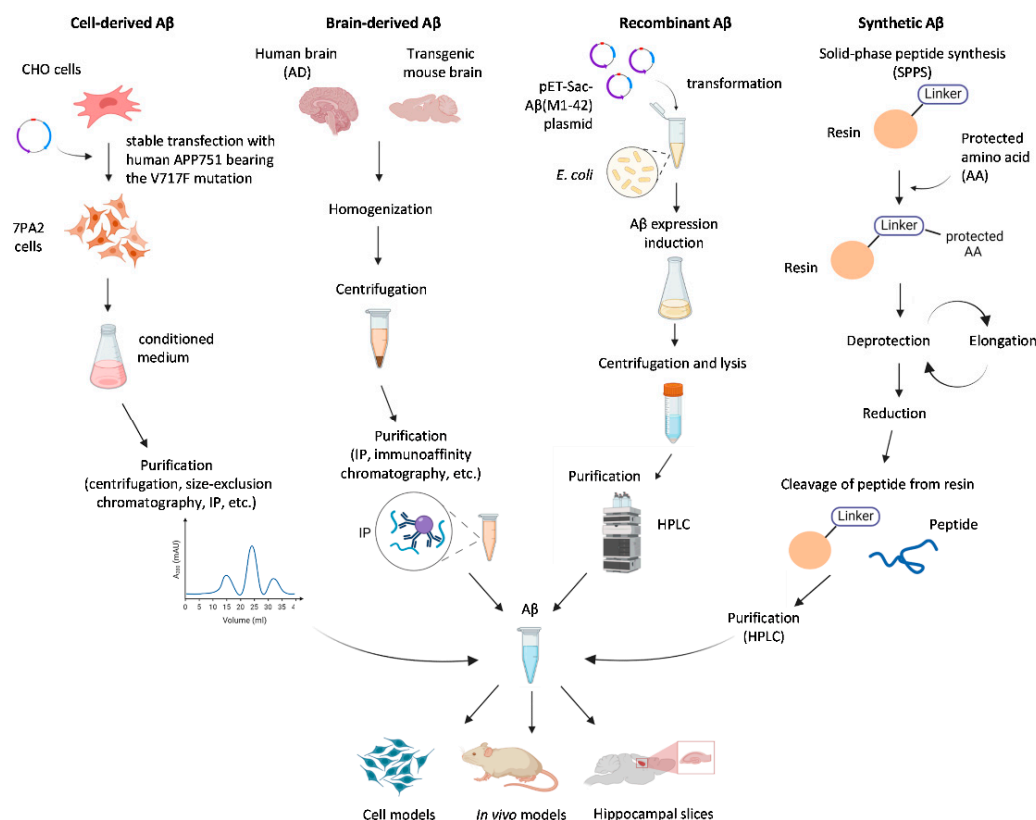


**Copyright:** © 2022 by the authors. Licensee MDPI, Basel, Switzerland. This article is an open access article distributed under the terms and conditions of the Creative Commons Attribution (CC BY) license (<https://creativecommons.org/licenses/by/4.0/>).

## 1. Introduction

Alzheimer's disease (AD) is a neurodegenerative disorder and the most common cause of dementia [1]. AD is characterised by progressive memory loss and cognitive impairment. A hallmark of AD is the formation of senile plaques in the brain parenchyma, the main component of which is the beta-amyloid peptide ( $A\beta$ ).  $A\beta$  is a fragment of the amyloid precursor protein (APP) produced via sequential proteolysis by  $\beta$ - and  $\gamma$ -secretase enzymes [2]. The imprecise proteolysis by the latter yields peptides 37 to 43 amino acids in length, the most common of which are peptides consisting of 40 and 42 amino acid residues ( $A\beta_{40}$  and  $A\beta_{42}$ ) [3].  $A\beta$  monomers can form soluble oligomers, which aggregate further into characteristic insoluble fibrils and amyloid plaques [4]. According to the current paradigm, primarily soluble oligomers of  $A\beta$ , but also fibrils and plaques, induce neuronal dysfunction and trigger the pathological cascade of AD, including hyperphosphorylation of tau [5,6] and neuroinflammation [7]. Thus, the understanding of the  $A\beta$  aggregation process and the biological effects of  $A\beta$  assemblies is crucial for the development of diagnostics or disease-modifying therapies for AD. A number of in vitro and in vivo models are used for studying AD pathogenesis and for testing anti- $A\beta$  therapeutics, including systems for monitoring protein aggregation, cell cultures (primary neurons, neuroblastoma lines), acute

tissue slices, and animal models (*D. melanogaster*, *C. elegans*, mice) [8–10]. To bridge the gap between traditional 2D culture and in vivo studies, 3D models are being developed, such as brain organoids based on iPSC (induced pluripotent stem cells)-derived human cells [11]. In these models, exogenous A $\beta$  is commonly applied to model the AD-related accumulation of the peptide. A $\beta$  preparations purified from the post-mortem AD brain allow studying the effect of oligomers and fibrils, formed under physiological conditions. However, post-mortem tissue is not easily obtained, and the concentration of soluble oligomers in tissue extracts is low [12,13]. As an alternative, soluble A $\beta$  oligomers are produced in cell cultures overexpressing APP, the most common cell line being Chinese hamster ovarian (CHO) expressing the V717F APP variant (7PA2 cell line). Synthetic A $\beta$ , usually manufactured with solid-phase synthesis (SPS), is widely used in such studies. Despite the structural and functional similarity, A $\beta$  preparations from different sources differ in amyloidogenicity, neurotoxicity, receptor-binding properties, and the ability to activate cellular signalling cascades. Hence, to create a relevant model for studying AD molecular mechanisms or for developing anti-AD drugs, it is needed to choose the most relevant and available source of A $\beta$ . This review discusses the similarities and differences between brain-derived (bA $\beta$ ), cell culture-derived (secreted, cA $\beta$ ), synthetic A $\beta$  (sA $\beta$ ), and recombinant A $\beta$  (rA $\beta$ ) (Figure 1), with regards to their structure and biological effects, and ponders on the causes of the observed differences.



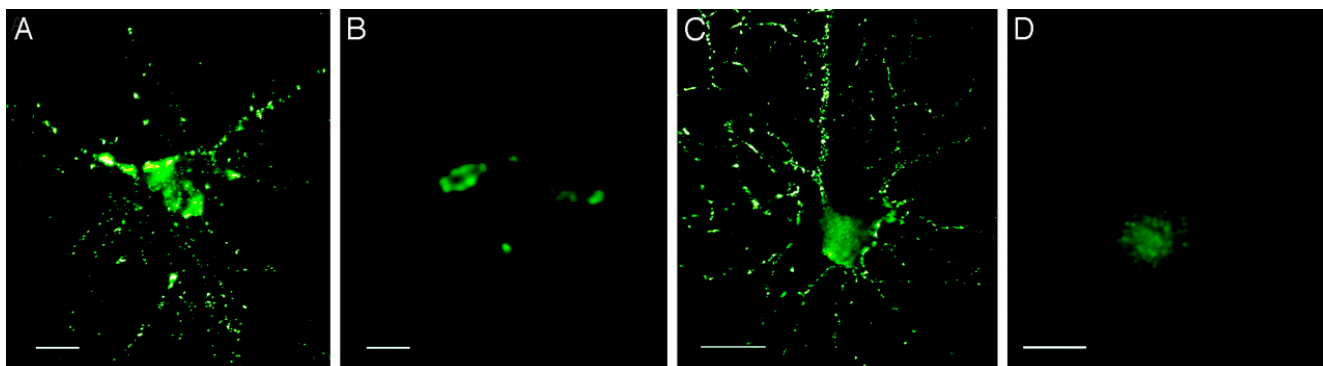
**Figure 1.** Common sources of beta-amyloid peptide (A $\beta$ ) used for modelling Alzheimer's disease (AD)-related processes in vitro and in vivo.

## 2. Structure of A $\beta$ Aggregates

### 2.1. Synthetic and Brain-Derived A $\beta$ Oligomers and Fibrils

A $\beta$  oligomers can be obtained via the in vitro aggregation of synthetic A $\beta$  or purified from post-mortem tissues (usually, from the brain) of AD patients or transgenic animals expressing human APP. Both synthetic A $\beta$  and brain-derived A $\beta$  can polymerise and form amyloid fibrils [14]. According to Gong et al. [15], A $\beta$  oligomers from these sources have an identical molecular mass and isoelectric point, and are also similar in structure, since

they both interact with conformation-specific antibodies. Synthetic A $\beta$  oligomers, like brain-derived A $\beta$ , similarly bind to the brain and hippocampal neurons in primary cultures, which may reflect their structural identity (Figure 2) [15].

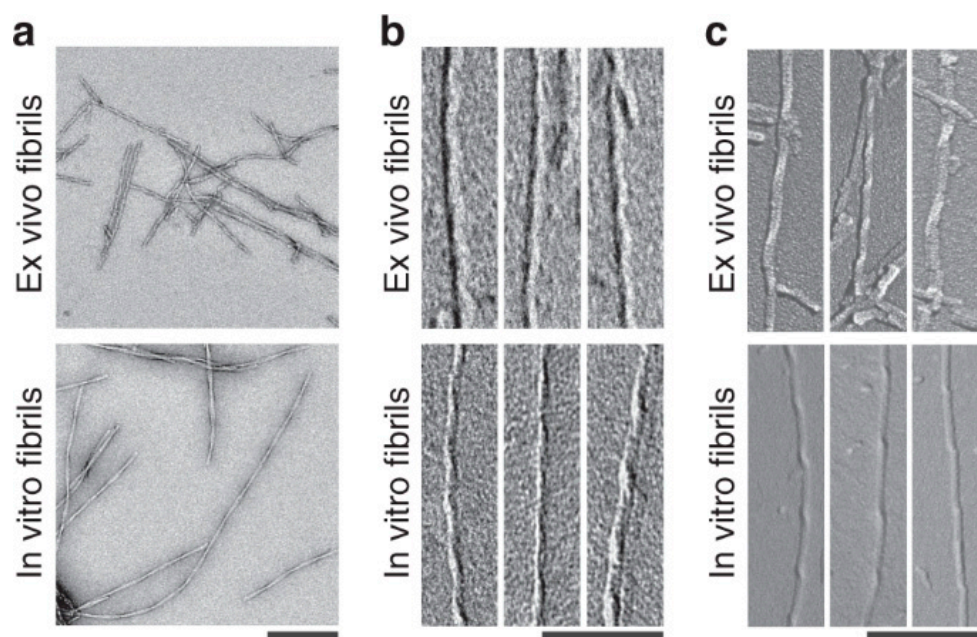


**Figure 2.** A $\beta$ -derived diffusible ligands (ADDLs) from the AD brain or prepared in vitro show identical punctate binding to neuronal cell-surface proteins. Cultured hippocampal neurons were incubated with soluble extracts of the human brain or synthetic ADDLs. Binding was visualised by immunofluorescence microscopy by using an M93 antibody. Soluble AD-brain proteins (A), soluble control-brain proteins (B), synthetic ADDLs (C), and synthetic ADDLs (D) pretreated (1 h) with an oligomer-selective antibody M71 are shown. Small puncta, typically <1  $\mu$ m, and largely distributed along neurites, are evident for AD extracts and synthetic ADDLs, but not for control extracts or antibody-pretreated ADDLs. (Bar, 10  $\mu$ m). The figure is reprinted from [15].

However, these A $\beta$  preparations are also significantly different in certain ways. Using sensitivity-enhanced solid-state nuclear magnetic resonance spectroscopy, it was found that fibrils of synthetic A $\beta$  were structurally different, and conformational differences between synthetic, and brain-derived A $\beta$  were observed [16]. sA $\beta$  and endogenous A $\beta$  (bA $\beta$  and cA $\beta$ ) species were also different in size and stability [17]: despite similar electrophoretic mobility, they eluted differently in size exclusion chromatography. Unlike bA $\beta$  and cA $\beta$ , sA $\beta$  oligomers can be broken up into monomers if boiled in 1% SDS [17]. Studies with electron and cryo-electron microscopy found that A $\beta$  fibrils obtained in vitro resembled the aggregates purified from the post-mortem human brain (Figure 3). On the other hand, brain-derived fibrils are twisted to the right, in contrast to the left-handed twisting of fibrils formed in vitro [18]. According to the authors of the study, these differences may be not due to the origin of aggregates but to the conditions of fibril formation in vitro. Thus, with careful consideration of the aggregation conditions, it could be possible to obtain in vitro aggregates with a structure similar to natural amyloid fibrils.

## 2.2. Synthetic and Cell-Derived A $\beta$ Aggregates

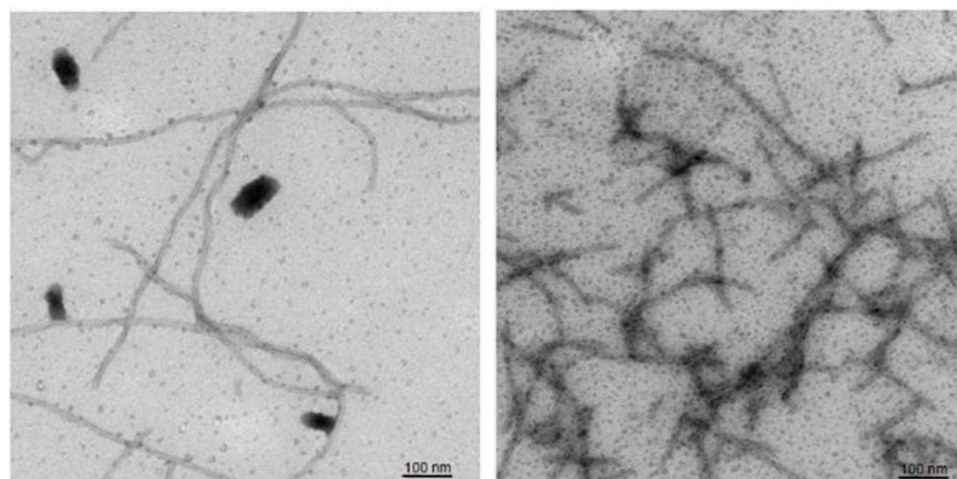
Studies comparing sA $\beta$  and cell-derived A $\beta$  (cA $\beta$ ) also demonstrated similarities and differences in the properties of these species' aggregates. Single fibrils of both A $\beta$  species are alike; however, fibrils formed with cA $\beta$  purified from primary rat cerebellum cultures demonstrated more complex interfibrillar organisation [19]. Synthetic A $\beta$  aggregation required high concentrations of the peptide ( $10^{-5}$ – $10^{-3}$  M) and was slower than cA $\beta$  aggregation, which started at less than  $10^{-9}$  M [19,20]. sA $\beta$  and cA $\beta$  showed different mobility in SDS-PAGE, and sA $\beta$  aggregation was suppressed by Congo Red, which was not the case for cA $\beta$  [21]. Unlike synthetic A $\beta$ , cA $\beta$  oligomers, similar to bA $\beta$ , were stable in SDS [20,22]. Surprisingly, in the conditioned CHO medium, sA $\beta$  oligomerised even in nanomolar concentrations, which points to the possibility that the different properties of these A $\beta$  species could be mitigated with proper conditions for sA $\beta$  aggregation [21].



**Figure 3.** Different structures of brain-derived and in vitro formed A $\beta$  fibrils. (a) Negative stain TEM images of brain-derived amyloid fibrils or in vitro formed A $\beta$  fibrils. Scale bar: 200 nm. (b,c) TEM (b) and SEM (c) images of brain-derived amyloid fibrils or in vitro formed A $\beta$  fibrils after platinum side shadowing. Scale bars: 100 nm. The figure is reprinted from [18].

### 2.3. Synthetic and Recombinant A $\beta$ Aggregates

Recombinant expression systems are also used as sources of A $\beta$ . Recombinant A $\beta$  (rA $\beta$ ) is capable of aggregation and fibril formation; however, rA $\beta$  fibrils are longer and less branched than those of sA $\beta$  (Figure 4) [23]. Several studies showed that rA $\beta$  aggregated faster and with a shorter lag phase than sA $\beta$  [23,24].



**Figure 4.** Fibrils of recombinant (left) and synthetic (right) A $\beta$ 42. Negative stain EM analysis. The figure is reprinted from [23].

Thus, brain-derived, cell-derived synthetic and recombinant A $\beta$  can form aggregates but show variation in the aggregation dynamics and fibril structure. Notably, none of the reviewed works studied the aggregation and structure of more than two A $\beta$  species at once, and a thorough comparison of these properties in a single work is yet to be done.



### 3. Biological Effects of A $\beta$ In Vitro and In Vivo

#### 3.1. Synthetic and Brain-Derived A $\beta$ Effects in Cultured Cells

Treatment of cultured cells with A $\beta$  is widely used for studying its pathogenic effects and for screening potential anti-A $\beta$  compounds. In such experimental settings, sA $\beta$  demonstrates effects, similar to those of the brain-derived peptide. Both sA $\beta$  and bA $\beta$  induce cell death and neurite degeneration in neuronal cultures [25,26]. Incubation of primary murine hippocampal and cortical neurons with sA $\beta$  or with bA $\beta$  increases the distance between APP and Presenilin 1 (PSEN1) in the plasma membrane and inhibits A $\beta$  formation via a negative feedback loop [27]. It was also found that sA $\beta$  and cA $\beta$  alike activated the cAMP response element-binding protein (CREB) via the PI3K/Akt pathway in human neuroblastoma and primary neurons [28]. The following section discusses various aspects of neuronal cell damage in AD that can be modelled with exogenous A $\beta$  treatment and compares the applicability of A $\beta$  from different sources for such studies.

##### 3.1.1. Tau Phosphorylation and Cytoskeletal Disruption

Another hallmark of AD, besides the formation of amyloid plaques, is the hyperphosphorylation and dysfunction of the cytoskeletal protein tau. Tau hyperphosphorylation in the AD brain is likely caused by A $\beta$  and can be observed in cell cultures upon treatment with either synthetic or secreted peptides [29–32]. Dimers of synthetic and brain-derived A $\beta$  are able to induce hyperphosphorylation of the tau protein in the primary culture of rat hippocampal cells [33]. In a 3D culture model of AD including neurons, astrocytes, and microglia, endogenously produced A $\beta$  at subnanomolar concentrations induced tau phosphorylation, axon damage, and death of neurons and astrocytes [34]. A $\beta$  also detrimentally affects other cytoskeletal proteins: treatment of iPSCs with sA $\beta$  oligomers resulted in a decrease in drebrin (actin-binding protein involved in the formation of dendritic spines) [35]. These effects are consistent with the observed loss of drebrin both in the brains of AD patients and in a mouse model of AD [36]. Thus, all three A $\beta$  preparations (sA $\beta$ , bA $\beta$ , and cA $\beta$ ) induce tau hyperphosphorylation and destruction of the cytoskeleton. However, subnanomolar (0.2–0.4 nM) concentrations of brain-derived and secreted A $\beta$  were enough to cause such effects, whereas concentrations about 1000 higher (100 nM) were used for sA $\beta$ .

##### 3.1.2. Receptor Interaction

A $\beta$  oligomers interact with multiple plasma membrane receptors, such as nicotine acetylcholine receptors, N-methyl D-aspartate receptors (NMDAR), low-density lipoprotein receptor-related protein 1 (LRP1), a receptor for advanced glycation end products (RAGE), and cellular prion protein (PrPc) [37]. The interaction with NMDAR, leading to excitotoxicity, is highly relevant for AD pathology, and the NMDAR antagonist memantine is among the few approved drugs for AD. It was shown that synthetic A $\beta$  bound NMDAR in cultured hippocampal and cortical neurons [38,39]. Activation of NMDAR by sA $\beta$  oligomers in micromolar concentrations promotes Ca<sup>2+</sup> influx [39] and reduces synaptic proteins PSD-95 (postsynaptic density protein 95) and synaptophysin in cultured hippocampal neurons [40], whereas the binding of sub-micromolar (300–500 nM) sA $\beta$  to NMDAR induces cellular oxidative stress [41]. Similar effects were observed in primary neurons from mice overexpressing the familial AD variant of human APP–APP<sup>swe</sup> [42]. In these cells, endogenous cell-secreted A $\beta$  downregulated PSD-95 and reduced cell surface expression of glutamate receptor subunit GluR1, whereas the inhibition of  $\gamma$ -secretase abrogated such changes. Treatment of wild-type neurons with sA $\beta$  also affected the levels of PSD-95 and GluR1. The concentration of secreted A $\beta$  was not reported in the study; however, according to other works, cell-secreted A $\beta$  concentration is subnanomolar (about 0.2–0.7 nM in media of SH-SY5Y cells overexpressing APP<sup>swe</sup> [43]).

Nicotinic acetylcholine receptors (nAChRs) represent another class of receptors mediating the effects of A $\beta$ . In cultured cells, micromolar sA $\beta$  exhibits toxicity through nAChR leading to the activation of signalling cascades [44,45]. There are very few works devoted to the interaction of secreted and brain-derived A $\beta$  with nAChR; however, it has been shown

that cA $\beta$  in the picomolar concentration range changes the morphology of dendritic spines in cell cultures of rat hippocampal neurons, and these effects are prevented by nAChR blockers [46].

In general, both sA $\beta$  and cA $\beta$  can be used to model AD-related neuronal damage *in vitro*. However, in all cases considered, to achieve a comparable effect, the required concentrations of the synthetic peptide are 1–2 orders of magnitude higher than those of the cell-derived variant. The effects of recombinant A $\beta$  in cell models are less studied, though it is reported to be more toxic than sA $\beta$ , both in cell cultures and *in vivo*, and may represent a compromise between the availability and the physiological relevance of the effects [24].

### 3.1.3. Ion Channel Modulation and Neuronal Survival

In the concentration range of pM to low nM, A $\beta$  is thought to exert its physiological effects and support plasticity and neuronal survival [47]. Indeed, if endogenous A $\beta$  is removed from primary neuronal cultures through secretase inhibition or by immunodepletion, neuronal viability is reduced [48], and deregulation of voltage-gated potassium channels occurs [49]. The A $\beta$  production rate or concentration in untransfected cell cultures is rarely reported, though the concentration in cell medium is probably low, in the cerebrospinal fluid of healthy subjects, A $\beta$ 40 and A $\beta$ 42 are present at about 2 nM and 30 pM, respectively [50,51], and about 1 nM of A $\beta$ 42 is found in the water-soluble fraction of human brain extracts [52]. Consistent with these estimations, the addition of 1 nM of synthetic A $\beta$ 40 promoted neuronal survival [48] and increased potassium channel expression [49] in A $\beta$ -depleted cultures. Synthetic A $\beta$ 42 monomers, unlike oligomeric preparations, were shown to be neuroprotective and mitigate the NMDAR excitotoxicity; however, the concentration reported was in a high nanomolar range—30100 nM [53]. However, a study investigating the effect of brain-derived A $\beta$ 42 found that A $\beta$ 42 monomers protected primary neurons from A $\beta$ 42 oligomer neurotoxicity in a much lower concentration of 1 nM [54].

Thus, synthetic A $\beta$  at physiological concentrations (pM–nM) can be robustly used to replicate the role of endogenous cell-secreted peptide in the regulation of neuronal activity and cell viability. Data on the physiological effects of brain-derived A $\beta$  in cell culture are scarce, though it was also reported to be neuroprotective at low concentrations.

### 3.2. Synthetic and Natural A $\beta$ in Animal Models of Alzheimer's Disease

Studies in animal models have made an important contribution to understanding the pathogenesis of AD. *In vivo* models can be divided into spontaneous and induced, and the latter can be broken up further into models utilising transgenic and non-transgenic animals [55]. Transgenic models are the most common for AD studies (the transgenes are APP, presenilin 1 (PS-1) and presenilin 2 (PS-2), apolipoprotein E (ApoE), and tau). Despite all the advantages, transgenic animals have a number of character flaws that limit their use in experiments. Transgenic animals model a disease with an early onset, which stands for less than 5% of AD cases. Brain pathology in model animals is characterised by weak activation of microglia and a low level of neuronal death [56,57]. Some authors note that the manifestation of AD pathology after transgene insertion strongly depends on the promoter and genetic background of the animal, which makes it difficult to compare transgenic models with each other [57]. Unlike transgenic animals, induced AD models that are based on the injection of A $\beta$  can cause both neurodegeneration and microglial activation [56]. Injection models allow for the studying of the role of A $\beta$  while controlling its concentration and isoform composition. However, to obtain a relevant model, it is also necessary to choose the optimal source of A $\beta$ . Below, the *in vivo* use of A $\beta$  obtained from different sources will be compared, which in this review, refers to intracerebroventricular injection (ICV) or intravenous administration of the peptide.

### 3.2.1. Cerebral Amyloidosis

In contrast to the acute effects of beta-amyloid in the *in vitro* systems discussed above, cerebral amyloidosis is induced by injection of an exogenous peptide that triggers the misfolding of endogenously generated A $\beta$  peptides. This leads to the development of a pathology that depends on both the host (model animal) and the agent (injected peptide) which was first reported by Meyer-Luehmann et al. [58]. One of the factors complicating studies of amyloidosis induction is that murine A $\beta$ , which differs from human A $\beta$  by three amino acid residues, does not readily aggregate *in vivo*. Thus, it was shown that the AD brain extract does not induce amyloid pathology in wild-type mice [58,59]. Therefore, transgenic animals expressing human APP variants are predominantly used for this purpose.

To induce cerebral amyloidosis *in vivo*, brain extracts from both AD patients and transgenic animals overexpressing human APP are used. However, brain-derived A $\beta$  from these sources could have different amyloidogenic activities, which should be taken into consideration. Although both human-derived and mouse-derived A $\beta$  are capable of inducing amyloid pathology [58,60], amyloid plaques in human and transgenic mouse brains have significant differences, such as plaque morphology, solubility and SDS stability, resistance to proteolytic degradation, the repertoire of post-translational modifications [61]. This may be the reason for the difference in the seeding activity of A $\beta$  used for *in vivo* seeding.

Studies have shown that even within the same species (*Homo sapiens*), there is a heterogeneity in the molecular structure of misfolded A $\beta$  species [62], which facilitated the origin of AD classification, based on the predominant structural type ("strain") of brain A $\beta$  aggregates. This is consistent with the fact that human-derived A $\beta$  may show variability in its amyloidogenic effects. Thus, it was shown that brain extracts from different AD patients have different seeding activity; although all species induce amyloidosis in mice, different deposition patterns are observed [62,63]. Similarly, the injection of brain extracts obtained from patients with various AD strains induced divergent amyloid pathologies in model animals, different in deposits' morphology and A $\beta$  modifications [64].

One of the approaches for the search for triggers of cerebral amyloidosis was ICV administration of synthetic A $\beta$  or brain homogenate containing natural A $\beta$  to animals. In one of the studies [65], synthetic A $\beta$  (total of 160  $\mu$ L 0.5 mg/mL) or human brain homogenate containing native A $\beta$  (total of 300  $\mu$ L of 10% brain homogenate) was administered over several years to primates (marmosets). Thus, it was found that both synthetic and natural A $\beta$  were able to induce cerebral amyloidosis. Amyloidosis developed in ~90% of monkeys injected with brain homogenate, while in animals inoculated with sA $\beta$ , amyloidosis developed in only 10–20% of cases. A similar study on transgenic mice [58] demonstrated that intracerebral injections of 10% brain extract of AD patients over 4 months induced amyloidosis in APP23 transgenic mice; however, the injection of samples containing the synthetic peptide in a similar dose did not cause amyloidosis. The increase in the sA $\beta$  dose by 2–3 orders of magnitude led only to the formation of amorphous aggregates near the injection site.

It was also observed that sA $\beta$  caused less amyloid deposition compared to the brain-purified sample [66]. Animals inoculated with the synthetic peptide took longer to develop amyloidosis. Since the injected amount of A $\beta$  was approximately 10 times higher in synthetic peptide preparations compared to bA $\beta$  preparations, it can be concluded that the amyloidogenic activity of synthetic A $\beta$  is lower [66]. Apparently, a synthetic peptide cannot be considered optimal for the induction of cerebral amyloidosis. More relevant results can be obtained with either amyloid-containing brain extracts or modified forms of the peptide, which are the amyloidogenic components of such extracts [67]. Importantly, the authors of this study failed to find any works studying the amyloidogenic properties of secreted or recombinant A $\beta$ .

### 3.2.2. Tau Phosphorylation and Cytoskeletal Disruption In Vivo

Modelling of tau pathology in vivo became a major challenge since the pivotal role of this protein in AD pathogenesis became clear [68]. Apart from models combining tau and APP transgenes, models where A $\beta$  is injected in primates or in human tau-expressing mice are widely used to study tau dysfunction. Both synthetic A $\beta$  oligomers and A $\beta$  purified from the human brain or from the brain of APP23 mice are able to induce tau hyperphosphorylation, GSK-3 (glycogen synthase kinase-3) activation, and tau deposition to various degrees. Prolonged (days) injection of 67 ng/h of sA $\beta$  oligomers in rTg4510 mice elevated phospho-tau [69], whereas a single 1.5  $\mu$ L injection of 250  $\mu$ M of sA $\beta$  fibrils in P301L mice induced the formation of neurofibrillary tangles (NFT) [70]. However, similar to the other aspects of AD that were reviewed, sA $\beta$  seems to be a less potent trigger of tau pathology than bA $\beta$ . In another work on a P301L mice line, a single injection of 2.5  $\mu$ L of brain extract from APP23 mice containing only 2 nM of A $\beta$  (100–1000 times less than that of sA $\beta$ ) was enough to cause the tau deposition throughout the P310L mouse brain [71]. In the case of sA $\beta$ , the formation of NFT was found in the amygdala only, though it was observed earlier (18 days post-injection) compared to bA $\beta$  (6 months post-injection) [70].

### 3.2.3. Receptor Interaction In Vivo

ICV administration of A $\beta$  preparations is widely used to study the contribution of NMDAR to the pathology of AD. Synthetic A $\beta$  (40–60 pmol) administered to animals inhibited long-term potentiation (LTP) and impaired the cognitive abilities of animals, and these effects were partially abolished by low doses of memantine [72]. Also, using multiphoton imaging, it was shown that picomolar concentrations of cell-secreted A $\beta$  oligomers caused NMDAR-mediated disturbance of calcium homeostasis and synaptic loss in the brain of healthy mice [73]. The results obtained using sA $\beta$  and cA $\beta$  are consistent with observations in transgenic mice that overexpress A $\beta$  and lack various NMDAR subunits (GluN1, GluN2A, and GluN2B) [74]. Thus, all three A $\beta$  species exert their toxicity via NMDA receptors in vivo and in remarkably low concentrations.

### 3.2.4. Memory and Cognition

Exogenous peptides are also used to recapitulate cognitive damage, which is a prevalent clinical feature of AD, in animal models. Brain-derived, secreted, and synthetic A $\beta$  peptides upon ICV injection in rats negatively impact cognitive functions [75,76]. However, to observe such effects, different concentrations of peptides are required: micromolar in the case of sA $\beta$  and A $\beta$  oligomers purified from transgenic mice brains, and low nM for cA $\beta$ . In experiments on arthropods, a cell-secreted form of A $\beta$  caused memory deterioration, which was not the case for synthetic A $\beta$  [19]. A $\beta$  injections can be used to study memory-related forms of synaptic plasticity. Thus, sA $\beta$  and A $\beta$  purified from the brain of AD patients caused long-term synaptic depression (LTD) in mice by activating metabotropic glutamate receptor 5 (mGlu5) and binding to the cellular prion protein PrPc [77]. Injection of brain extracts from AD patients [78], A $\beta$  oligomers obtained from both cerebrospinal fluid (CSF) and the 7PA2 cell culture [79], as well as synthetic [80] A $\beta$ , resulted in the inhibition of LTP in vivo.

The influence of A $\beta$  on spatial memory was studied using the Morris water maze and Y-maze on A $\beta$ -injected mice or rats. Multiple studies showed the ability of synthetic A $\beta$  to cause memory impairments in vivo: in some studies, impairments were detected 10–20 days after injection [81–83]; however, in other experiments, effects on spatial memory were noticed much later (20–80 days post-injection) [84]. It was also shown that injections of A $\beta$  oligomers caused mild and transient impairment in learning and memory (deterioration was observed on day 12, recovery by day 19) [83]. Such differences can be associated both with variations in the experimental protocols and with the amounts of peptide used, which ranged from 0.135 to 23  $\mu$ g per animal [81–84].

Similar to synthetic A $\beta$ , rA $\beta$  caused spatial memory impairment in the Morris water maze test (3  $\mu$ g/ $\mu$ L, 18  $\mu$ g per animal) 10 days after injection [85]. Notably, human brain-



derived A $\beta$  did not impair spatial memory in the Y-Maze and Morris trials (29–39 days post-injection) [86], although social memory impairment was observed (21 days post-injection). Strikingly, the amount of injected A $\beta$  in this study was orders of magnitude lower, less than 3 pg per animal.

The effect of cell-derived A $\beta$  on spatial memory was found using the radial-arm maze: the effect of beta-amyloid oligomers appeared two hours after exposure ( $\sim$ 1–2 nM, 20  $\mu$ L injection), but disappeared within a day [87]. In a similar study using a radial arm water maze (hybrid of the Morris water maze and radial arm maze), the effect of synthetic A $\beta$  on spatial memory was observed, but over a longer period and using higher concentrations (250 pmol/day infusion of A $\beta$ <sub>42</sub> within 14 days, total about 16  $\mu$ g/rat) [88].

Thus, with the exception of brain-derived A $\beta$ , all considered A $\beta$  species (sA $\beta$ , rA $\beta$ , cA $\beta$ ) contributed to the impairment of spatial memory, though at different time intervals after injections. The efficacy of different A $\beta$  species in producing memory disruption is difficult to compare directly due to the differences in the experimental protocols. In some works using sA $\beta$  and cA $\beta$  [83,87], memory recovery was observed, which should be taken into account.

Surprisingly, some studies have shown that the peptides from different sources are analogous when used at low (picomolar) concentrations that exert not toxic, but stimulative effects: in such quantities, both brain-derived and synthetic A $\beta$  enhance LTP in the hippocampus and improve memory in vivo [80,89]. Another experimental work confirmed such findings demonstrating that sA $\beta$  oligomers at 200 pM promote the conversion of short-term memory into long-term memory [90]. Thus, brain-derived and synthetic A $\beta$  at picomolar concentrations are both applicable to model the physiological effects of A $\beta$  in vivo, which is in accordance with results obtained in the cell culture.

### 3.3. Studies of A $\beta$ in the Acute Slice Model

Acute hippocampal slices prepared from adult rodents allow studying mature neurons in an almost intact environment under controlled conditions. Though mostly used for measurements of memory-related cellular parameters—LTP and LTD—acute slices were utilised to study the amyloid formation and tau alterations upon application of exogenous A $\beta$ .

#### 3.3.1. Effects of A $\beta$ on LTP and LTD

A $\beta$  oligomers extracted from the cerebral cortex of AD patients are able to inhibit LTP, increase LTD, and reduce the density of dendritic spines in acute slices of the hippocampus [75]. It was also found that A $\beta$  oligomers inhibited LTP regardless of the source (cell cultures, cerebral cortex of AD patients, or synthetic A $\beta$ ), and this effect was prevented by NMDAR inhibitors [91]. The contribution of NMDAR to the A $\beta$  effect on neuronal plasticity was shown in another study demonstrating that sA $\beta$ , cA $\beta$ , and bA $\beta$  induced the development of LTD via mGluR or NMDAR [92]. However, differences in the action of these A $\beta$  variants are also reported. Wang et al. [93] showed that although synthetic and cell-derived A $\beta$  both inhibited LTP, cell-derived A $\beta$  was more potent and inhibited LTP at a concentration of 1 nM, while a threshold concentration for sA $\beta$  effect was as high as 200 nM or more [72,94,95]. Another study provided an even lower estimation for the concentration of secreted A $\beta$  oligomers (100–300 pM) required to block hippocampal LTP [96]. Thus, peptides obtained in all of the considered ways are able to negatively affect neuronal plasticity in the model of brain slices, though this effect was manifested at different concentrations of A $\beta$ .

On the other hand, similar to in vivo studies, sA $\beta$  oligomers in picomolar concentration (200 pM) enhanced the LTP in hippocampal slices via a pathway mediated by  $\alpha$ 7 nAChR [80,90]. The removal of endogenous A $\beta$  in hippocampal slices with antibodies or small interfering RNA (siRNA) against APP led to a sharp decrease in LTP, which supports the results obtained in vivo [89]. Synthetic A $\beta$ <sub>42</sub> at a concentration of 200 pM restored LTP after the endogenous A $\beta$  depletion in slices of wild-type mice [89]. Thus, both syn-

thetic and endogenous A $\beta$  beneficially affect the neuroplasticity within the same picomolar concentration range.

### 3.3.2. A $\beta$ -Induced Tau Abnormalities in Acute Slices

Most of the studies use synthetic A $\beta$  oligomers to probe the role of tau in AD in acute slices. It was found that sA $\beta$  induced LTP block and LTD induction in rodent hippocampal slices via NMDAR-dependent hyperphosphorylation of tau by GSK-3 [97,98]. Oligomers of sA $\beta$  also induced tau dysfunction in acute human brain slices [99], and in all of the studies mentioned, the concentration of peptides was in the 100–500 nM range. Interestingly, the same amount of A $\beta$  caused tau hyperphosphorylation and NMDAR toxicity in cell culture (see above). In the only paper on the role of bA $\beta$  in acute slices, it was demonstrated that seeding with brain extracts containing ~1 nM of A $\beta$  was required for tau hyperphosphorylation induction by 1.5  $\mu$ M of sA $\beta$  [100].

## 4. Factors behind the Different Properties of Brain-Derived, Cell-Derived, and Synthetic A $\beta$

Most studies reviewed show that the source of A $\beta$  greatly affects the structure of aggregates of the peptide and its biological effects. However, very few published works are dedicated to a comparison of A $\beta$  obtained from different sources or justify the selection of the A $\beta$  source for the study. Thus, in this review, in many cases, the authors had to compare the results from different studies with different experimental protocols, which complicated the interpretation. The effects of synthetic, secreted, and brain-derived A $\beta$  in various model systems are summarised in Table 1. Recombinant A $\beta$  is used rarely, compared to other variants, and thus was not included in Table 1. Notably, the authors limited the discussion of cell-secreted oligomers that were endogenous for the model since these conditions are difficult to standardise and the concentrations of endogenous oligomers are hardly ever measured in the corresponding works.

**Table 1.** Biological effects of synthetic, cell-derived, and brain-derived A $\beta$  in different models.

Effect	Source of A $\beta$	Models		
		Cells	In Vivo	Slices
Tau phosphorylation and cytoskeletal disruption	Synthetic A $\beta$	+ (100–500 nM) [31,33,35]	+ (100 $\mu$ M, single injection or prolonged infusion) [69,70]	+ (100–500 nM) [97–99]
	Cell-derived A $\beta$	++ (0.2–0.5 nM) [29,34]	nd	nd
	Brain-derived A $\beta$	++ (0.2–0.5 nM) [33]	++ (nM, single injection) [71]	+/- (1 nM, only in combination with sA $\beta$ ) [100]
Receptor interaction (NMDAR, AMPAR, nAChR)	Synthetic A $\beta$	+ (300–500 nM–10 $\mu$ M) [38–41,44,45]	+ [72]	+ [91,92]
	Cell-derived A $\beta$	++ (subnanomolar concentrations) [42,46]	++ (pM) [73]	+ [91,92,101]
	Brain-derived A $\beta$	nd	+ (transgenic animals) [38,74]	+ [91,92]
Cognitive dysfunction/inhibition of LTP	Synthetic A $\beta$	n/a	+ ( $\mu$ M) [76,77,80]	+ (200–500 nM) [72,91–95]
	Cell-derived A $\beta$	n/a	++ (pM) [76,79]	++ (100–300 pM–1 nM) [91–93,96]
	Brain-derived A $\beta$	n/a	+ (micromolar concentrations) [75–78]	+ [75,91,92]

Table 1. Cont.

Effect	Source of A $\beta$	Models		
		Cells	In Vivo	Slices
Physiological role: plasticity, survival	Synthetic A $\beta$	++ (nM) [48,49,53]	++ (pM) [80,90]	++ (pM) [80,90]
	Cell-derived A $\beta$	+/- (endogenous only) [48,49]	nd	nd
	Brain-derived A $\beta$	++ (1 nM) [54]	++ (pM, endogenous) [89]	++ (pM, endogenous) [89]

“+” — the presence of an effect, “++” — the presence of an effect at a physiological concentration of A $\beta$ , “+/-” — controversial data, “nd” — no data: no studies were found, “n/a” — not applicable for this model.

Understanding the causes of the different effects of sA $\beta$ , cA $\beta$ , rA $\beta$ , and bA $\beta$  is important for both practical and fundamental applications. For sA $\beta$ , one of the causes could be the impurity of the peptide. SPS, primarily used for A $\beta$  production, does not yield a product of 100% purity, and the sA $\beta$  preparation usually contains trifluoroacetic acid salts and other components that complicate solvation and change the biophysical and biochemical properties of the peptide [102]. Thus, it was shown that different batches of sA $\beta$  differed in the rate of fibril formation, toxicity, and binding of Congo Red dye [103,104]. During the synthesis, Met35 oxidation occurs, alongside amino acid racemisation, and both factors hamper the formation of a regular quaternary structure of amyloid aggregates [24]. It has been shown that Met35 oxidation in A $\beta$ 42 leads to the formation of oligomers indistinguishable in size and morphology from A $\beta$ 40 oligomers [105]. Since A $\beta$ 40 oligomers are less toxic than A $\beta$ 42 [106], such oxidation can also affect the biochemical properties of synthetic A $\beta$ .

The presence of metal ions in both culture media and in extracellular space in the brain can also stand behind the difference between synthetic and natural A $\beta$  oligomers. A $\beta$  binds divalent cations, of which copper and zinc are considered the most relevant for AD pathology [107]. In the presence of these metals, A $\beta$  aggregates faster and forms aggregates of distinct structures and properties [108], which is prevented by metal chelators [109]. Lipids, such as gangliosides, lipid rafts, cell surface receptors, and other membrane proteins also influence A $\beta$  aggregation through binding to A $\beta$  [110,111]. These components can play the role of a “seed” for pathological A $\beta$  aggregation [111,112]. It was found that the oligomers formed in such conditions differ from synthetic ones in physical properties, such as stability and structure [17,19,21].

Naturally produced A $\beta$  contains multiple variants of different lengths, with either extensions or truncations at the N- and C-termini, whereas synthetic and recombinant peptides of just one specific length (usually 40 or 42 residues) are commonly used. The extended A $\beta$  variants can be toxic, reduce LTP, and impair synaptic functions [113,114]. Truncated A $\beta$  variants are also present in the brains of AD patients and constitute about half of all A $\beta$  molecules [115,116]: such forms are also more toxic and more prone to aggregation [117] than full-length variants and can form stable complexes with full-length A $\beta$ 42 [118]. Thus, some proteoforms that contribute to A $\beta$  aggregation and toxicity may not be present in synthetic or recombinant A $\beta$  preparations. From this point of view, it is preferable to use cell-secreted A $\beta$ , since it is close to brain A $\beta$  in terms of N- and C-termini heterogeneity [119].

Truncation is only one example of the A $\beta$  modifications that occur in physiological conditions. In the natural environment, A $\beta$  peptides undergo various post-translational modifications that occur enzymatically or due to the interaction with low molecular weight substances, as well as spontaneously (isomerisation or racemisation) [120]. Such modifications constitute a long list including but not limited to: phosphorylation, isomerisation, citrullination, pyroglutamylation, and covalent cross-linking. Post-translational modifications affect the process of A $\beta$  aggregation, change the structure and the biological effects of

the oligomers [121], and influence A $\beta$  hydrolysis by the angiotensin-converting enzyme thereby promoting its accumulation [122]. For example, it was shown that isomerisation of the aspartate residue in the seventh position accelerated the development of amyloidosis in vivo [67] and enhanced the toxic properties of the peptide [123]. The pyroglutamylated A $\beta$  isoform also has an increased propensity for oligomerisation compared to unmodified A $\beta$  [124], as well as resistance to degradation and increased neurotoxicity [125]. Endogenous A $\beta$  oligomers are stabilised with covalent bonds, the formation of which is catalysed either by transglutaminase enzyme or non-enzymatically by prostaglandins and hydroxynonenal; such cross-linked A $\beta$  aggregates are more stable [17]. The formation of highly stable A $\beta$  aggregates can also occur as a result of oxidative modifications, e.g., the formation of dityrosine bonds. Such crosslinks form upon the binding of copper ions, which produce reactive oxygen species in the presence of a reducing agent (for example, ascorbate or dopamine) [126]. Dityrosine-cross-linked A $\beta$  aggregates are found in the brain and cerebrospinal fluid of AD patients [127]. It was shown that the cellular environment also created the necessary conditions for the formation of dityrosine bonds [127], which may explain the higher stability of A $\beta$  oligomers isolated from the brain or obtained from cell cultures compared to synthetic ones. On the contrary, A $\beta$  phosphorylation at Ser8 reduces the aggregation ability of A $\beta$  both in vitro and in a mouse model of AD [128,129].

The divergent effects of modified A $\beta$  species could be related to alterations in the structure of the peptide and of its aggregates. Much of the data on this topic are collected for A $\beta$  of different lengths, primarily comparing 1–40 and 1–42 A $\beta$  [130–133]. Structural alterations due to isomerisation of Asp residues [134,135], pyroglutamylation [136,137], phosphorylation [138,139], and Met35 oxidation [140,141] were reported as well. The altered chemical and physical properties of modified A $\beta$  assemblies could lead to changes in A $\beta$  receptor binding, as shown for interaction with nicotinic acetylcholine receptors, RAGE, and Na,K-ATPase [128,134,142,143], or to increase in A $\beta$ -related oxidative damage [124,127]. However, the exact mechanisms explaining the enhanced neurotoxicity or aggregation of the modified peptides are mostly unknown.

Nevertheless, various post-translational modifications of A $\beta$  creating a variety of heterogeneous A $\beta$  forms may explain the differences between the properties of synthetic and natural A $\beta$ .

Aside from the variability in the effects of A $\beta$  obtained from different sources, a variance in the effects of different A $\beta$  preparations of the same type should be taken into account. As such, A $\beta$  purification from post-mortem human AD brains or from AD model animals includes the extensive manipulation that most likely alters the native conformation of the aggregates. The conformational variability of aggregates across patients or even brain regions (A $\beta$  strains) was reported [18,62,64]. Synthetic A $\beta$  from different suppliers was shown to have different aggregation kinetics and form aggregates of different structures [144]. Notably, there are multiple protocols for purification of brain-derived A $\beta$  purification [116,145–147] and protocols for aggregation of synthetic A $\beta$  [148–150] that differ from study to study and from lab to lab. Careful consideration of these factors could improve the quality of the conclusions drawn when comparing the results of different studies.

## 5. Conclusions

The A $\beta$  peptide obtained from different sources—synthetic, cell-secreted, recombinant, and brain-derived—demonstrates significant differences in aggregation properties, in the structure of the oligomers and fibrils, and in the ability to induce biological effects in in vitro and in vivo models. Thus, a synthetic peptide needs to be used in high concentrations to obtain characteristic effects, while a cell-derived peptide is the closest to brain- or CSF-derived A $\beta$  in its effect on cultured cells and acute slices. On the other hand, synthetic and cell-derived peptides are generally more accessible than those isolated from tissues of AD patients or transgenic mice. Hence, the choice of the peptide source should be made based on the experimental model and the studied aspect of AD pathogenesis. Differences in the



properties of peptides from different sources can be explained both by conditions for the formation of aggregates (the presence or absence of metal ions, cell membranes receptors, and cross-linking agents) and by a wide range of modified A $\beta$  forms found in an organism or in cell culture. A comparison of the properties of oligomers found in an organism or in cell culture may help to understand the factors that are important for the formation of toxic A $\beta$  aggregates in the AD brain and find novel drug targets or diagnostic markers.

**Author Contributions:** Conceptualization, E.P.B.; writing—original draft preparation, K.B.V. and E.P.B.; writing—review and editing, V.A.M. and A.A.M.; funding acquisition, A.A.M. All authors have read and agreed to the published version of the manuscript.

**Funding:** The work was performed employing unique scientific facility “Scanning ion-conductance microscope with a confocal module” (registration number 2512530), and was financially supported by the Ministry of Education and Science of the Russian Federation, Agreement No. 075-15-2022-264.

**Institutional Review Board Statement:** Not applicable.

**Informed Consent Statement:** Not applicable.

**Data Availability Statement:** Not applicable.

**Acknowledgments:** Figure 2 is reprinted from [15]: Copyright (2003) National Academy of Sciences. Figure 3 is reprinted from [18] and Figure 4 is reprinted from [23] under CC BY license 4.0.

**Conflicts of Interest:** The authors declare no conflict of interest.

## References

- Anand, R.; Gill, K.D.; Mahdi, A.A. Therapeutics of Alzheimer’s disease: Past, present and future. *Neuropharmacology* **2014**, *76* (Pt A), 27–50. [[CrossRef](#)] [[PubMed](#)]
- Chen, G.-F.; Xu, T.-H.; Yan, Y.; Zhou, Y.-R.; Jiang, Y.; Melcher, K.; Xu, H.E. Amyloid beta: Structure, biology and structure-based therapeutic development. *Acta Pharmacol. Sin.* **2017**, *38*, 1205–1235. [[CrossRef](#)] [[PubMed](#)]
- Lublin, A.L.; Gandy, S. Amyloid- $\beta$  Oligomers: Possible Roles as Key Neurotoxins in Alzheimer’s Disease. *Mt. Sinai J. Med. N. Y.* **2010**, *77*, 43–49. [[CrossRef](#)] [[PubMed](#)]
- Kayed, R.; Lasagna-Reeves, C.A. Molecular Mechanisms of Amyloid Oligomers Toxicity. *J. Alzheimers Dis.* **2013**, *33*, S67–S78. [[CrossRef](#)]
- Bloom, G.S. Amyloid- $\beta$  and tau: The trigger and bullet in Alzheimer disease pathogenesis. *JAMA Neurol.* **2014**, *71*, 505–508. [[CrossRef](#)]
- Musiek, E.S.; Holtzman, D.M. Three dimensions of the amyloid hypothesis: Time, space and “wingmen”. *Nat. Neurosci.* **2015**, *18*, 800–806. [[CrossRef](#)]
- Doens, D.; Fernández, P.L. Microglia receptors and their implications in the response to amyloid  $\beta$  for Alzheimer’s disease pathogenesis. *J. Neuroinflamm.* **2014**, *11*, 48. [[CrossRef](#)]
- Ranjan, V.D.; Qiu, L.; Tan, E.K.; Zeng, L.; Zhang, Y. Modelling Alzheimer’s disease: Insights from in vivo to in vitro three-dimensional culture platforms. *J. Tissue Eng. Regen. Med.* **2018**, *12*, 1944–1958. [[CrossRef](#)]
- Saraceno, C.; Musardo, S.; Marcello, E.; Pelucchi, S.; Diluca, M. Modeling Alzheimer’s disease: From past to future. *Front. Pharmacol.* **2013**, *4*, 77. [[CrossRef](#)]
- Cho, S.; Wood, A.; Bowlby, M.R. Brain Slices as Models for Neurodegenerative Disease and Screening Platforms to Identify Novel Therapeutics. *Curr. Neuropharmacol.* **2007**, *5*, 19–33. [[CrossRef](#)]
- Gerakis, Y.; Hetz, C. Brain organoids: A next step for humanized Alzheimer’s disease models? *Mol. Psychiatry* **2019**, *24*, 474–478. [[CrossRef](#)] [[PubMed](#)]
- Hu, X.; Crick, S.L.; Bu, G.; Frieden, C.; Pappu, R.V.; Lee, J.-M. Amyloid seeds formed by cellular uptake, concentration, and aggregation of the amyloid-beta peptide. *Proc. Natl. Acad. Sci. USA* **2009**, *106*, 20324–20329. [[CrossRef](#)] [[PubMed](#)]
- Seubert, P.; Vigo-Pelfrey, C.; Esch, F.; Lee, M.; Dovey, H.; Davis, D.; Sinha, S.; Schioosmacher, M.; Whaley, J.; Swindlehurst, C.; et al. Isolation and quantification of soluble Alzheimer’s  $\beta$ -peptide from biological fluids. *Nature* **1992**, *359*, 325–327. [[CrossRef](#)] [[PubMed](#)]
- Chaney, M.O.; Stine, W.B.; Kokjohn, T.A.; Kuo, Y.-M.; Esh, C.; Rahman, A.; Luehrs, D.C.; Schmidt, A.M.; Stern, D.; Yan, S.D.; et al. RAGE and amyloid beta interactions: Atomic force microscopy and molecular modeling. *Biochim. Biophys. Acta BBA-Mol. Basis Dis.* **2005**, *1741*, 199–205. [[CrossRef](#)]
- Gong, Y.; Chang, L.; Viola, K.L.; Lacor, P.N.; Lambert, M.P.; Finch, C.E.; Krafft, G.A.; Klein, W.L. Alzheimer’s disease-affected brain: Presence of oligomeric A $\beta$  ligands (ADDLs) suggests a molecular basis for reversible memory loss. *Proc. Natl. Acad. Sci. USA* **2003**, *100*, 10417–10422. [[CrossRef](#)]

16. Wickramasinghe, A.; Xiao, Y.; Kobayashi, N.; Wang, S.; Scherpelz, K.P.; Yamazaki, T.; Meredith, S.C.; Ishii, Y. Sensitivity-Enhanced Solid-State NMR Detection of Structural Differences and Unique Polymorphs in Pico- to Nanomolar Amounts of Brain-Derived and Synthetic 42-Residue Amyloid- $\beta$  Fibrils. *J. Am. Chem. Soc.* **2021**, *143*, 11462–11472. [[CrossRef](#)]
17. Moore, B.D.; Rangachari, V.; Tay, W.M.; Milkovic, N.M.; Rosenberry, T.L. Biophysical Analyses of Synthetic Amyloid- $\beta$ (1–42) Aggregates before and after Covalent Cross-Linking. Implications for Deducing the Structure of Endogenous Amyloid- $\beta$  Oligomers. *Biochemistry* **2009**, *48*, 11796–11806. [[CrossRef](#)]
18. Kollmer, M.; Close, W.; Funk, L.; Rasmussen, J.; Bsoul, A.; Schierhorn, A.; Schmidt, M.; Sigurdson, C.J.; Jucker, M.; Fändrich, M. Cryo-EM structure and polymorphism of A $\beta$  amyloid fibrils purified from Alzheimer's brain tissue. *Nat. Commun.* **2019**, *10*, 4760. [[CrossRef](#)]
19. Romano, A.; Serafino, A.; Krasnowska, E.; Ciotti, M.T.; Calissano, P.; Ruberti, F.; Galli, C. Neuronal fibrillogenesis: Amyloid fibrils from primary neuronal cultures impair long-term memory in the crab *Chasmagnathus*. *Behav. Brain Res.* **2003**, *147*, 73–82. [[CrossRef](#)]
20. Podlisny, M.B.; Ostaszewski, B.L.; Squazzo, S.L.; Koo, E.H.; Rydell, R.E.; Teplow, D.B.; Selkoe, D.J. Aggregation of Secreted Amyloid  $\beta$ -Protein into Sodium Dodecyl Sulfate-stable Oligomers in Cell Culture (\*). *J. Biol. Chem.* **1995**, *270*, 9564–9570. [[CrossRef](#)]
21. Podlisny, M.B.; Walsh, D.M.; Amarante, P.; Ostaszewski, B.L.; Stimson, E.R.; Maggio, J.E.; Teplow, D.B.; Selkoe, D.J. Oligomerization of endogenous and synthetic amyloid beta-protein at nanomolar levels in cell culture and stabilization of monomer by Congo red. *Biochemistry* **1998**, *37*, 3602–3611. [[CrossRef](#)] [[PubMed](#)]
22. Walsh, D.M.; Klyubin, I.; Fadeeva, J.V.; Cullen, W.K.; Anwyl, R.; Wolfe, M.S.; Rowan, M.J.; Selkoe, D.J. Naturally secreted oligomers of amyloid beta protein potently inhibit hippocampal long-term potentiation in vivo. *Nature* **2002**, *416*, 535–539. [[CrossRef](#)] [[PubMed](#)]
23. Adams, D.J.; Nemkov, T.G.; Mayer, J.P.; Old, W.M.; Stowell, M.H.B. Identification of the primary peptide contaminant that inhibits fibrillation and toxicity in synthetic amyloid- $\beta$ 42. *PLoS ONE* **2017**, *12*, e0182804. [[CrossRef](#)]
24. FINDER, V.H.; Vodopivec, I.; Nitsch, R.M.; Glockshuber, R. The Recombinant Amyloid- $\beta$  Peptide A $\beta$ 1–42 Aggregates Faster and Is More Neurotoxic than Synthetic A $\beta$ 1–42. *J. Mol. Biol.* **2010**, *396*, 9–18. [[CrossRef](#)]
25. Hartley, D.M.; Walsh, D.M.; Ye, C.P.; Diehl, T.; Vasquez, S.; Vassilev, P.M.; Teplow, D.B.; Selkoe, D.J. Protofibrillar intermediates of amyloid beta-protein induce acute electrophysiological changes and progressive neurotoxicity in cortical neurons. *J. Neurosci.* **1999**, *19*, 8876–8884. [[CrossRef](#)] [[PubMed](#)]
26. Pike, C.J.; Cummings, B.J.; Cotman, C.W. beta-Amyloid induces neuritic dystrophy in vitro: Similarities with Alzheimer pathology. *Neuroreport* **1992**, *3*, 769–772. [[CrossRef](#)]
27. Li, X.; Uemura, K.; Hashimoto, T.; Nasser-Ghods, N.; Arimon, M.; Lill, C.M.; Palazzolo, I.; Krainc, D.; Hyman, B.T.; Berezovska, O. Neuronal activity and secreted amyloid  $\beta$  lead to altered amyloid  $\beta$  precursor protein and presenilin 1 interactions. *Neurobiol. Dis.* **2013**, *50*, 127–134. [[CrossRef](#)]
28. Zimbone, S.; Monaco, I.; Giani, F.; Pandini, G.; Copani, A.G.; Giuffrida, M.L.; Rizzarelli, E. Amyloid Beta monomers regulate cyclic adenosine monophosphate response element binding protein functions by activating type-1 insulin-like growth factor receptors in neuronal cells. *Aging Cell* **2018**, *17*, e12684. [[CrossRef](#)]
29. Wang, Z.-F.; Li, H.-L.; Li, X.-C.; Zhang, Q.; Tian, Q.; Wang, Q.; Xu, H.; Wang, J.-Z. Effects of endogenous  $\beta$ -amyloid overproduction on tau phosphorylation in cell culture. *J. Neurochem.* **2006**, *98*, 1167–1175. [[CrossRef](#)]
30. Takashima, A.; Noguchi, K.; Michel, G.; Mercken, M.; Hoshi, M.; Ishiguro, K.; Imahori, K. Exposure of rat hippocampal neurons to amyloid  $\beta$  peptide (25–35) induces the inactivation of phosphatidylinositol-3 kinase and the activation of tau protein kinase I/glycogen synthase kinase-3 $\beta$ . *Neurosci. Lett.* **1996**, *203*, 33–36. [[CrossRef](#)]
31. Takashima, A.; Honda, T.; Yasutake, K.; Michel, G.; Murayama, O.; Murayama, M.; Ishiguro, K.; Yamaguchi, H. Activation of tau protein kinase I/glycogen synthase kinase-3 $\beta$  by amyloid  $\beta$  peptide (25–35) enhances phosphorylation of tau in hippocampal neurons. *Neurosci. Res.* **1998**, *31*, 317–323. [[CrossRef](#)] [[PubMed](#)]
32. Hoshi, M.; Sato, M.; Matsumoto, S.; Noguchi, A.; Yasutake, K.; Yoshida, N.; Sato, K. Spherical aggregates of  $\beta$ -amyloid (amylospheroid) show high neurotoxicity and activate tau protein kinase I/glycogen synthase kinase-3 $\beta$ . *Proc. Natl. Acad. Sci. USA* **2003**, *100*, 6370–6375. [[CrossRef](#)] [[PubMed](#)]
33. Jin, M.; Shepardson, N.; Yang, T.; Chen, G.; Walsh, D.; Selkoe, D.J. Soluble amyloid  $\beta$ -protein dimers isolated from Alzheimer cortex directly induce Tau hyperphosphorylation and neuritic degeneration. *Proc. Natl. Acad. Sci. USA* **2011**, *108*, 5819–5824. [[CrossRef](#)] [[PubMed](#)]
34. Park, J.; Wetzel, I.; Marriott, I.; Dréau, D.; D'Avanzo, C.; Kim, D.Y.; Tanzi, R.E.; Cho, H. A 3D human triculture system modeling neurodegeneration and neuroinflammation in Alzheimer's disease. *Nat. Neurosci.* **2018**, *21*, 941–951. [[CrossRef](#)] [[PubMed](#)]
35. Zhang, D.; Pekkanen-Mattila, M.; Shahsavani, M.; Falk, A.; Teixeira, A.I.; Herland, A. A 3D Alzheimer's disease culture model and the induction of P21-activated kinase mediated sensing in iPSC derived neurons. *Biomaterials* **2014**, *35*, 1420–1428. [[CrossRef](#)] [[PubMed](#)]
36. Ishizuka, Y.; Hanamura, K. Drebrin in Alzheimer's Disease. *Adv. Exp. Med. Biol.* **2017**, *1006*, 203–223. [[CrossRef](#)] [[PubMed](#)]
37. Wiatrak, B.; Piasny, J.; Kuźniarski, A.; Gašiorowski, K. Interactions of Amyloid- $\beta$  with Membrane Proteins. *Int. J. Mol. Sci.* **2021**, *22*, 6075. [[CrossRef](#)] [[PubMed](#)]

38. Dewachter, I.; Filipkowski, R.K.; Priller, C.; Ris, L.; Neyton, J.; Croes, S.; Terwel, D.; Gysemans, M.; Devijver, H.; Borghgraef, P.; et al. Deregulation of NMDA-receptor function and down-stream signaling in APP[V717I] transgenic mice. *Neurobiol. Aging* **2009**, *30*, 241–256. [[CrossRef](#)] [[PubMed](#)]
39. Cascella, R.; Evangelisti, E.; Bigi, A.; Becatti, M.; Fiorillo, C.; Stefani, M.; Chiti, F.; Cecchi, C. Soluble Oligomers Require a Ganglioside to Trigger Neuronal Calcium Overload. *J. Alzheimers Dis. JAD* **2017**, *60*, 923–938. [[CrossRef](#)]
40. Liu, J.; Chang, L.; Roselli, F.; Almeida, O.F.X.; Gao, X.; Wang, X.; Yew, D.T.; Wu, Y. Amyloid- $\beta$  Induces Caspase-Dependent Loss of PSD-95 and Synaptophysin Through NMDA Receptors. *J. Alzheimers Dis.* **2010**, *22*, 541–556. [[CrossRef](#)]
41. De Felice, F.G.; Velasco, P.T.; Lambert, M.P.; Viola, K.; Fernandez, S.J.; Ferreira, S.T.; Klein, W.L. Abeta oligomers induce neuronal oxidative stress through an N-methyl-D-aspartate receptor-dependent mechanism that is blocked by the Alzheimer drug memantine. *J. Biol. Chem.* **2007**, *282*, 11590–11601. [[CrossRef](#)] [[PubMed](#)]
42. Almeida, C.G.; Tampellini, D.; Takahashi, R.H.; Greengard, P.; Lin, M.T.; Snyder, E.M.; Gouras, G.K. Beta-amyloid accumulation in APP mutant neurons reduces PSD-95 and GluR1 in synapses. *Neurobiol. Dis.* **2005**, *20*, 187–198. [[CrossRef](#)] [[PubMed](#)]
43. Jämsä, A.; Belda, O.; Edlund, M.; Lindström, E. BACE-1 inhibition prevents the  $\gamma$ -secretase inhibitor evoked A $\beta$  rise in human neuroblastoma SH-SY5Y cells. *J. Biomed. Sci.* **2011**, *18*, 76. [[CrossRef](#)] [[PubMed](#)]
44. Lilja, A.M.; Porras, O.; Storelli, E.; Nordberg, A.; Marutle, A. Functional interactions of fibrillar and oligomeric amyloid- $\beta$  with alpha7 nicotinic receptors in Alzheimer's disease. *J. Alzheimers Dis. JAD* **2011**, *23*, 335–347. [[CrossRef](#)] [[PubMed](#)]
45. Kamynina, A.V.; Holmström, K.M.; Koroev, D.O.; Volpina, O.M.; Abramov, A.Y. Acetylcholine and antibodies against the acetylcholine receptor protect neurons and astrocytes against beta-amyloid toxicity. *Int. J. Biochem. Cell Biol.* **2013**, *45*, 899–907. [[CrossRef](#)]
46. Calabrese, B.; Shaked, G.M.; Tabarean, I.V.; Braga, J.; Koo, E.H.; Halpain, S. Rapid, concurrent alterations in pre- and postsynaptic structure induced by naturally-secreted amyloid- $\beta$  protein. *Mol. Cell. Neurosci.* **2007**, *35*, 183–193. [[CrossRef](#)] [[PubMed](#)]
47. Giuffrida, M.L.; Caraci, F.; De Bona, P.; Pappalardo, G.; Nicoletti, F.; Rizzarelli, E.; Copani, A. The monomer state of beta-amyloid: Where the Alzheimer's disease protein meets physiology. *Rev. Neurosci.* **2010**, *21*, 83–93. [[CrossRef](#)] [[PubMed](#)]
48. Plant, L.D.; Boyle, J.P.; Smith, I.F.; Peers, C.; Pearson, H.A. The Production of Amyloid  $\beta$  Peptide Is a Critical Requirement for the Viability of Central Neurons. *J. Neurosci.* **2003**, *23*, 5531–5535. [[CrossRef](#)]
49. Plant, L.D.; Webster, N.J.; Boyle, J.P.; Ramsden, M.; Freir, D.B.; Peers, C.; Pearson, H.A. Amyloid  $\beta$  peptide as a physiological modulator of neuronal 'A'-type K $^{+}$  current. *Neurobiol. Aging* **2006**, *27*, 1673–1683. [[CrossRef](#)]
50. Mehta, P.D.; Pirttilä, T.; Mehta, S.P.; Sersen, E.A.; Aisen, P.S.; Wisniewski, H.M. Plasma and Cerebrospinal Fluid Levels of Amyloid  $\beta$  Proteins 1-40 and 1-42 in Alzheimer Disease. *Arch. Neurol.* **2000**, *57*, 100–105. [[CrossRef](#)]
51. Fagan, A.M.; Roe, C.M.; Xiong, C.; Mintun, M.A.; Morris, J.C.; Holtzman, D.M. Cerebrospinal fluid tau/beta-amyloid(42) ratio as a prediction of cognitive decline in nondemented older adults. *Arch. Neurol.* **2007**, *64*, 343–349. [[CrossRef](#)] [[PubMed](#)]
52. Ondrejčák, T.; Klyubin, I.; Corbett, G.T.; Fraser, G.; Hong, W.; Mably, A.J.; Gardener, M.; Hammersley, J.; Perkinson, M.S.; Billinton, A.; et al. Cellular Prion Protein Mediates the Disruption of Hippocampal Synaptic Plasticity by Soluble Tau In Vivo. *J. Neurosci.* **2018**, *38*, 10595–10606. [[CrossRef](#)] [[PubMed](#)]
53. Giuffrida, M.L.; Caraci, F.; Pignataro, B.; Cataldo, S.; Bona, P.D.; Bruno, V.; Molinaro, G.; Pappalardo, G.; Messina, A.; Palmigiano, A.; et al.  $\beta$ -Amyloid Monomers Are Neuroprotective. *J. Neurosci.* **2009**, *29*, 10582–10587. [[CrossRef](#)]
54. Bate, C.; Williams, A. Monomeric amyloid- $\beta$  reduced amyloid- $\beta$  oligomer-induced synapse damage in neuronal cultures. *Neurobiol. Dis.* **2018**, *111*, 48–58. [[CrossRef](#)]
55. Kaushal, A.; Wani, W.Y.; Anand, R.; Gill, K.D. Spontaneous and induced nontransgenic animal models of AD: Modeling AD using combinatorial approach. *Am. J. Alzheimers Dis. Other Dement.* **2013**, *28*, 318–326. [[CrossRef](#)] [[PubMed](#)]
56. Stéphan, A.; Phillips, A.G. A case for a non-transgenic animal model of Alzheimer's disease. *Genes Brain Behav.* **2005**, *4*, 157–172. [[CrossRef](#)]
57. Lecanu, L.; Papadopoulos, V. Modeling Alzheimer's disease with non-transgenic rat models. *Alzheimers Res. Ther.* **2013**, *5*, 17. [[CrossRef](#)]
58. Meyer-Luehmann, M.; Coomaraswamy, J.; Bolmont, T.; Kaeser, S.; Schaefer, C.; Kilger, E.; Neuenschwander, A.; Abramowski, D.; Frey, P.; Jaton, A.L.; et al. Exogenous induction of cerebral beta-amyloidogenesis is governed by agent and host. *Science* **2006**, *313*, 1781–1784. [[CrossRef](#)]
59. Kane, M.D.; Lipinski, W.J.; Callahan, M.J.; Bian, F.; Durham, R.A.; Schwarz, R.D.; Roher, A.E.; Walker, L.C. Evidence for seeding of beta-amyloid by intracerebral infusion of Alzheimer brain extracts in beta-amyloid precursor protein-transgenic mice. *J. Neurosci.* **2000**, *20*, 3606–3611. [[CrossRef](#)]
60. Fritschi, S.K.; Cintron, A.; Ye, L.; Mahler, J.; Bühler, A.; Baumann, F.; Neumann, M.; Nilsson, K.P.R.; Hammarström, P.; Walker, L.C.; et al. A $\beta$  seeds resist inactivation by formaldehyde. *Acta Neuropathol.* **2014**, *128*, 477–484. [[CrossRef](#)]
61. Kuo, Y.M.; Kokjohn, T.A.; Beach, T.G.; Sue, L.I.; Brune, D.; Lopez, J.C.; Kalback, W.M.; Abramowski, D.; Sturchler-Pierrat, C.; Staufenbiel, M.; et al. Comparative analysis of amyloid-beta chemical structure and amyloid plaque morphology of transgenic mouse and Alzheimer's disease brains. *J. Biol. Chem.* **2001**, *276*, 12991–12998. [[CrossRef](#)] [[PubMed](#)]
62. Rasmussen, J.; Mahler, J.; Beschorner, N.; Kaeser, S.A.; Häslner, L.M.; Baumann, F.; Nyström, S.; Portelius, E.; Blennow, K.; Lashley, T.; et al. Amyloid polymorphisms constitute distinct clouds of conformational variants in different etiological subtypes of Alzheimer's disease. *Proc. Natl. Acad. Sci. USA* **2017**, *114*, 13018–13023. [[CrossRef](#)]

63. Duran-Aniotz, C.; Moreno-Gonzalez, I.; Gamez, N.; Perez-Urrutia, N.; Vegas-Gomez, L.; Soto, C.; Morales, R. Amyloid pathology arrangements in Alzheimer's disease brains modulate in vivo seeding capability. *Acta Neuropathol. Commun.* **2021**, *9*, 56. [[CrossRef](#)] [[PubMed](#)]
64. Watts, J.C.; Condello, C.; Stöhr, J.; Oehler, A.; Lee, J.; DeArmond, S.J.; Lannfelt, L.; Ingelsson, M.; Giles, K.; Prusiner, S.B. Serial propagation of distinct strains of A $\beta$  prions from Alzheimer's disease patients. *Proc. Natl. Acad. Sci. USA* **2014**, *111*, 10323–10328. [[CrossRef](#)]
65. Ridley, R.M.; Baker, H.F.; Windle, C.P.; Cummings, R.M. Very long term studies of the seeding of beta-amyloidosis in primates. *J. Neural Transm.* **2006**, *113*, 1243–1251. [[CrossRef](#)]
66. Stöhr, J.; Watts, J.C.; Mensinger, Z.L.; Oehler, A.; Grillo, S.K.; DeArmond, S.J.; Prusiner, S.B.; Giles, K. Purified and synthetic Alzheimer's amyloid beta (A $\beta$ ) prions. *Proc. Natl. Acad. Sci. USA* **2012**, *109*, 11025–11030. [[CrossRef](#)]
67. Kozin, S.A.; Cheglakov, I.B.; Ovsepyan, A.A.; Telegin, G.B.; Tsvetkov, P.O.; Lisitsa, A.V.; Makarov, A.A. Peripherally applied synthetic peptide isoAsp7-A $\beta$ (1-42) triggers cerebral  $\beta$ -amyloidosis. *Neurotox. Res.* **2013**, *24*, 370–376. [[CrossRef](#)] [[PubMed](#)]
68. Stancu, I.-C.; Vasconcelos, B.; Terwel, D.; Dewachter, I. Models of  $\beta$ -amyloid induced Tau-pathology: The long and "folded" road to understand the mechanism. *Mol. Neurodegener.* **2014**, *9*, 51. [[CrossRef](#)]
69. Selenica, M.-L.B.; Brownlow, M.; Jimenez, J.P.; Lee, D.C.; Pena, G.; Dickey, C.A.; Gordon, M.N.; Morgan, D. Amyloid Oligomers Exacerbate Tau Pathology in a Mouse Model of Tauopathy. *Neurodegener. Dis.* **2013**, *11*, 165–181. [[CrossRef](#)]
70. Götz, J.; Chen, F.; van Dorpe, J.; Nitsch, R.M. Formation of neurofibrillary tangles in P301I tau transgenic mice induced by A $\beta$  42 fibrils. *Science* **2001**, *293*, 1491–1495. [[CrossRef](#)]
71. Bolmont, T.; Clavaguera, F.; Meyer-Luehmann, M.; Herzog, M.C.; Radde, R.; Staufenbiel, M.; Lewis, J.; Hutton, M.; Tolnay, M.; Jucker, M. Induction of Tau Pathology by Intracerebral Infusion of Amyloid- $\beta$ -Containing Brain Extract and by Amyloid- $\beta$  Deposition in APP  $\times$  Tau Transgenic Mice. *Am. J. Pathol.* **2007**, *171*, 2012–2020. [[CrossRef](#)] [[PubMed](#)]
72. Klyubin, I.; Wang, Q.; Reed, M.N.; Irving, E.A.; Upton, N.; Hofmeister, J.; Cleary, J.P.; Anwyl, R.; Rowan, M.J. Protection against A $\beta$ -mediated rapid disruption of synaptic plasticity and memory by memantine. *Neurobiol. Aging* **2011**, *32*, 614–623. [[CrossRef](#)] [[PubMed](#)]
73. Arbel-Ornath, M.; Hudry, E.; Boivin, J.R.; Hashimoto, T.; Takeda, S.; Kuchibhotla, K.V.; Hou, S.; Lattarulo, C.R.; Belcher, A.M.; Shakerdige, N.; et al. Soluble oligomeric amyloid- $\beta$  induces calcium dyshomeostasis that precedes synapse loss in the living mouse brain. *Mol. Neurodegener.* **2017**, *12*, 27. [[CrossRef](#)] [[PubMed](#)]
74. Müller, M.K.; Jacobi, E.; Sakimura, K.; Malinow, R.; von Engelhardt, J. NMDA receptors mediate synaptic depression, but not spine loss in the dentate gyrus of adult amyloid Beta (A $\beta$ ) overexpressing mice. *Acta Neuropathol. Commun.* **2018**, *6*, 110. [[CrossRef](#)]
75. Shankar, G.M.; Li, S.; Mehta, T.H.; Garcia-Munoz, A.; Shepardson, N.E.; Smith, I.; Brett, F.M.; Farrell, M.A.; Rowan, M.J.; Lemere, C.A.; et al. Amyloid- $\beta$  protein dimers isolated directly from Alzheimer's brains impair synaptic plasticity and memory. *Nat. Med.* **2008**, *14*, 837–842. [[CrossRef](#)]
76. Reed, M.N.; Hofmeister, J.J.; Jungbauer, L.; Welzel, A.T.; Yu, C.; Sherman, M.A.; Lesné, S.; LaDu, M.J.; Walsh, D.M.; Ashe, K.H.; et al. Cognitive effects of cell-derived and synthetically-derived A $\beta$  oligomers. *Neurobiol. Aging* **2011**, *32*, 1784–1794. [[CrossRef](#)]
77. Hu, N.-W.; Nicoll, A.J.; Zhang, D.; Mably, A.J.; O'Malley, T.; Purro, S.A.; Terry, C.; Collinge, J.; Walsh, D.M.; Rowan, M.J. mGlu5 receptors and cellular prion protein mediate amyloid- $\beta$ -facilitated synaptic long-term depression in vivo. *Nat. Commun.* **2014**, *5*, 3374. [[CrossRef](#)]
78. Barry, A.E.; Klyubin, I.; Mc Donald, J.M.; Mably, A.J.; Farrell, M.A.; Scott, M.; Walsh, D.M.; Rowan, M.J. Alzheimer's disease brain-derived amyloid- $\beta$ -mediated inhibition of LTP in vivo is prevented by immunotargeting cellular prion protein. *J. Neurosci.* **2011**, *31*, 7259–7263. [[CrossRef](#)]
79. Klyubin, I.; Betts, V.; Welzel, A.T.; Blennow, K.; Zetterberg, H.; Wallin, A.; Lemere, C.A.; Cullen, W.K.; Peng, Y.; Wisniewski, T.; et al. Amyloid beta protein dimer-containing human CSF disrupts synaptic plasticity: Prevention by systemic passive immunization. *J. Neurosci.* **2008**, *28*, 4231–4237. [[CrossRef](#)]
80. Puzzo, D.; Privitera, L.; Leznik, E.; Fà, M.; Staniszewski, A.; Palmeri, A.; Arancio, O. Picomolar amyloid-beta positively modulates synaptic plasticity and memory in hippocampus. *J. Neurosci.* **2008**, *28*, 14537–14545. [[CrossRef](#)]
81. Qi, Y.; Shang, L.; Liao, Z.; Su, H.; Jing, H.; Wu, B.; Bi, K.; Jia, Y. Intracerebroventricular injection of resveratrol ameliorated A $\beta$ -induced learning and cognitive decline in mice. *Metab. Brain Dis.* **2019**, *34*, 257–266. [[CrossRef](#)] [[PubMed](#)]
82. Sharma, S.; Verma, S.; Kapoor, M.; Saini, A.; Nehru, B. Alzheimer's disease like pathology induced six weeks after aggregated amyloid-beta injection in rats: Increased oxidative stress and impaired long-term memory with anxiety-like behavior. *Neurol. Res.* **2016**, *38*, 838–850. [[CrossRef](#)] [[PubMed](#)]
83. Wong, R.S.; Cechetto, D.F.; Whitehead, S.N. Assessing the Effects of Acute Amyloid  $\beta$  Oligomer Exposure in the Rat. *Int. J. Mol. Sci.* **2016**, *17*, 1390. [[CrossRef](#)] [[PubMed](#)]
84. Nakamura, S.; Murayama, N.; Noshita, T.; Annoura, H.; Ohno, T. Progressive brain dysfunction following intracerebroventricular infusion of beta(1-42)-amyloid peptide. *Brain Res.* **2001**, *912*, 128–136. [[CrossRef](#)]
85. Park, S.; Huh, J.-W.; Eom, T.; Na, N.; Lee, Y.; Kim, J.-S.; Kim, S.-U.; Shim, I.; Lee, S.-R.; Kim, E. Effects of Newly Synthesized Recombinant Human Amyloid- $\beta$  Complexes and Poly-Amyloid- $\beta$  Fibers on Cell Apoptosis and Cognitive Decline. *J. Microbiol. Biotechnol.* **2017**, *27*, 2044–2051. [[CrossRef](#)]



86. Baerends, E.; Soud, K.; Folke, J.; Pedersen, A.-K.; Henmar, S.; Konrad, L.; Lycas, M.D.; Mori, Y.; Pakkenberg, B.; Woldbye, D.P.D.; et al. Modeling the early stages of Alzheimer's disease by administering intracerebroventricular injections of human native A $\beta$  oligomers to rats. *Acta Neuropathol. Commun.* **2022**, *10*, 113. [[CrossRef](#)]
87. Poling, A.; Morgan-Paisley, K.; Panos, J.J.; Kim, E.-M.; O'Hare, E.; Cleary, J.P.; Lesné, S.; Ashe, K.H.; Porritt, M.; Baker, L.E. Oligomers of the amyloid-beta protein disrupt working memory: Confirmation with two behavioral procedures. *Behav. Brain Res.* **2008**, *193*, 230–234. [[CrossRef](#)]
88. Dao, A.T.; Zagaar, M.A.; Levine, A.T.; Salim, S.; Eriksen, J.L.; Alkadhi, K.A. Treadmill exercise prevents learning and memory impairment in Alzheimer's disease-like pathology. *Curr. Alzheimer Res.* **2013**, *10*, 507–515. [[CrossRef](#)]
89. Puzzo, D.; Privitera, L.; Fa', M.; Staniszewski, A.; Hashimoto, G.; Aziz, F.; Sakurai, M.; Ribe, E.M.; Troy, C.M.; Mercken, M.; et al. Endogenous amyloid- $\beta$  is necessary for hippocampal synaptic plasticity and memory. *Ann. Neurol.* **2011**, *69*, 819–830. [[CrossRef](#)]
90. Gulisano, W.; Melone, M.; Ripoli, C.; Tropea, M.R.; Li Puma, D.D.; Giunta, S.; Cocco, S.; Marcotulli, D.; Origlia, N.; Palmeri, A.; et al. Neuromodulatory Action of Picomolar Extracellular A $\beta$ 42 Oligomers on Presynaptic and Postsynaptic Mechanisms Underlying Synaptic Function and Memory. *J. Neurosci.* **2019**, *39*, 5986–6000. [[CrossRef](#)]
91. Li, S.; Jin, M.; Koeglsperger, T.; Shepardson, N.E.; Shankar, G.M.; Selkoe, D.J. Soluble A $\beta$  oligomers inhibit long-term potentiation through a mechanism involving excessive activation of extrasynaptic NR2B-containing NMDA receptors. *J. Neurosci.* **2011**, *31*, 6627–6638. [[CrossRef](#)] [[PubMed](#)]
92. Li, S.; Hong, S.; Shepardson, N.E.; Walsh, D.M.; Shankar, G.M.; Selkoe, D. Soluble oligomers of amyloid  $\beta$ -protein facilitate hippocampal long-term depression by disrupting neuronal glutamate uptake. *Neuron* **2009**, *62*, 788–801. [[CrossRef](#)] [[PubMed](#)]
93. Wang, Q.; Walsh, D.M.; Rowan, M.J.; Selkoe, D.J.; Anwyl, R. Block of long-term potentiation by naturally secreted and synthetic amyloid beta-peptide in hippocampal slices is mediated via activation of the kinases c-Jun N-terminal kinase, cyclin-dependent kinase 5, and p38 mitogen-activated protein kinase as well as metabotropic glutamate receptor type 5. *J. Neurosci.* **2004**, *24*, 3370–3378. [[CrossRef](#)] [[PubMed](#)]
94. Chen, Q.-S.; Wei, W.-Z.; Shimahara, T.; Xie, C.-W. Alzheimer amyloid beta-peptide inhibits the late phase of long-term potentiation through calcineurin-dependent mechanisms in the hippocampal dentate gyrus. *Neurobiol. Learn. Mem.* **2002**, *77*, 354–371. [[CrossRef](#)]
95. Lambert, M.P.; Barlow, A.K.; Chromy, B.A.; Edwards, C.; Freed, R.; Liosatos, M.; Morgan, T.E.; Rozovsky, I.; Trommer, B.; Viola, K.L.; et al. Diffusible, nonfibrillar ligands derived from A $\beta$ 1–42 are potent central nervous system neurotoxins. *Proc. Natl. Acad. Sci. USA* **1998**, *95*, 6448–6453. [[CrossRef](#)]
96. Townsend, M.; Shankar, G.M.; Mehta, T.; Walsh, D.M.; Selkoe, D.J. Effects of secreted oligomers of amyloid beta-protein on hippocampal synaptic plasticity: A potent role for trimers. *J. Physiol.* **2006**, *572*, 477–492. [[CrossRef](#)]
97. Shipton, O.A.; Leitz, J.R.; Dworzak, J.; Acton, C.E.J.; Tunbridge, E.M.; Denk, F.; Dawson, H.N.; Vitek, M.P.; Wade-Martins, R.; Paulsen, O.; et al. Tau Protein Is Required for Amyloid  $\beta$ -Induced Impairment of Hippocampal Long-Term Potentiation. *J. Neurosci.* **2011**, *31*, 1688–1692. [[CrossRef](#)]
98. Taylor, H.B.C.; Emptage, N.J.; Jeans, A.F. Long-term depression links amyloid- $\beta$  to the pathological hyperphosphorylation of tau. *Cell Rep.* **2021**, *36*, 109638. [[CrossRef](#)]
99. Mendes, N.D.; Fernandes, A.; Almeida, G.M.; Santos, L.E.; Selles, M.C.; Lyra e Silva, N.M.; Machado, C.M.; Horta-Júnior, J.A.C.; Louzada, P.R.; De Felice, F.G.; et al. Free-floating adult human brain-derived slice cultures as a model to study the neuronal impact of Alzheimer's disease-associated A $\beta$  oligomers. *J. Neurosci. Methods* **2018**, *307*, 203–209. [[CrossRef](#)]
100. Novotny, R.; Langer, F.; Mahler, J.; Skodras, A.; Vlachos, A.; Wegenast-Braun, B.M.; Kaeser, S.A.; Neher, J.J.; Eisele, Y.S.; Pietrowski, M.J.; et al. Conversion of Synthetic A $\beta$  to In Vivo Active Seeds and Amyloid Plaque Formation in a Hippocampal Slice Culture Model. *J. Neurosci.* **2016**, *36*, 5084–5093. [[CrossRef](#)]
101. Shankar, G.M.; Bloodgood, B.L.; Townsend, M.; Walsh, D.M.; Selkoe, D.J.; Sabatini, B.L. Natural Oligomers of the Alzheimer Amyloid- $\beta$  Protein Induce Reversible Synapse Loss by Modulating an NMDA-Type Glutamate Receptor-Dependent Signaling Pathway. *J. Neurosci.* **2007**, *27*, 2866–2875. [[CrossRef](#)] [[PubMed](#)]
102. Teplow, D.B. Preparation of amyloid beta-protein for structural and functional studies. *Methods Enzymol.* **2006**, *413*, 20–33. [[CrossRef](#)] [[PubMed](#)]
103. Howlett, D.R.; Jennings, K.H.; Lee, D.C.; Clark, M.S.; Brown, F.; Wetzel, R.; Wood, S.J.; Camilleri, P.; Roberts, G.W. Aggregation state and neurotoxic properties of Alzheimer beta-amyloid peptide. *Neurodegener. Neuroregeneration* **1995**, *4*, 23–32. [[CrossRef](#)] [[PubMed](#)]
104. Simmons, L.K.; May, P.C.; Tomaselli, K.J.; Rydel, R.E.; Fuson, K.S.; Brigham, E.F.; Wright, S.; Lieberburg, I.; Becker, G.W.; Brems, D.N. Secondary structure of amyloid beta peptide correlates with neurotoxic activity in vitro. *Mol. Pharmacol.* **1994**, *45*, 373–379.
105. Bitan, G.; Tarus, B.; Vollers, S.S.; Lashuel, H.A.; Condrón, M.M.; Straub, J.E.; Teplow, D.B. A molecular switch in amyloid assembly: Met35 and amyloid beta-protein oligomerization. *J. Am. Chem. Soc.* **2003**, *125*, 15359–15365. [[CrossRef](#)]
106. Dahlgren, K.N.; Manelli, A.M.; Stine, W.B.; Baker, L.K.; Krafft, G.A.; LaDu, M.J. Oligomeric and fibrillar species of amyloid-beta peptides differentially affect neuronal viability. *J. Biol. Chem.* **2002**, *277*, 32046–32053. [[CrossRef](#)]
107. Stelmashook, E.V.; Isaev, N.K.; Genrikhs, E.E.; Amelkina, G.A.; Khaspekov, L.G.; Skrebitsky, V.G.; Illarioshkin, S.N. Role of zinc and copper ions in the pathogenetic mechanisms of Alzheimer's and Parkinson's diseases. *Biochem. Biokhimiia* **2014**, *79*, 391–396. [[CrossRef](#)]

108. Atwood, C.S.; Scarpa, R.C.; Huang, X.; Moir, R.D.; Jones, W.D.; Fairlie, D.P.; Tanzi, R.E.; Bush, A.I. Characterization of copper interactions with Alzheimer amyloid beta peptides: Identification of an attomolar-affinity copper binding site on amyloid beta1-42. *J. Neurochem.* **2000**, *75*, 1219–1233. [[CrossRef](#)]
109. Cherny, R.A.; Legg, J.T.; McLean, C.A.; Fairlie, D.P.; Huang, X.; Atwood, C.S.; Beyreuther, K.; Tanzi, R.E.; Masters, C.L.; Bush, A.I. Aqueous dissolution of Alzheimer's disease A $\beta$  amyloid deposits by biometal depletion. *J. Biol. Chem.* **1999**, *274*, 23223–23228. [[CrossRef](#)]
110. Williamson, R.; Usardi, A.; Hanger, D.P.; Anderton, B.H. Membrane-bound beta-amyloid oligomers are recruited into lipid rafts by a fyn-dependent mechanism. *FASEB J.* **2008**, *22*, 1552–1559. [[CrossRef](#)]
111. Ahyayauch, H.; Masserini, M.; Goñi, F.M.; Alonso, A. The interaction of A $\beta$ 42 peptide in monomer, oligomer or fibril forms with sphingomyelin/cholesterol/ganglioside bilayers. *Int. J. Biol. Macromol.* **2021**, *168*, 611–619. [[CrossRef](#)] [[PubMed](#)]
112. Kozin, S.A.; Barykin, E.P.; Mitkevich, V.A.; Makarov, A.A. Anti-amyloid Therapy of Alzheimer's Disease: Current State and Prospects. *Biochem. Biokhimiia* **2018**, *83*, 1057–1067. [[CrossRef](#)] [[PubMed](#)]
113. Willem, M.; Tahirovic, S.; Busche, M.A.; Ovsepiyan, S.V.; Chafai, M.; Kootar, S.; Hornburg, D.; Evans, L.D.B.; Moore, S.; Daria, A.; et al.  $\eta$ -Secretase processing of APP inhibits neuronal activity in the hippocampus. *Nature* **2015**, *526*, 443–447. [[CrossRef](#)] [[PubMed](#)]
114. Welzel, A.T.; Maggio, J.E.; Shankar, G.M.; Walker, D.E.; Ostaszewski, B.L.; Li, S.; Klyubin, I.; Rowan, M.J.; Seubert, P.; Walsh, D.M.; et al. Secreted Amyloid  $\beta$ -Proteins in a Cell Culture Model Include N-Terminally Extended Peptides That Impair Synaptic Plasticity. *Biochemistry* **2014**, *53*, 3908–3921. [[CrossRef](#)]
115. Bugrova, A.E.; Strelnikova, P.A.; Indeykina, M.I.; Kononikhin, A.S.; Zakharova, N.V.; Brzhozovskiy, A.G.; Barykin, E.P.; Pekov, S.I.; Gavrish, M.S.; Babaev, A.A.; et al. The Dynamics of  $\beta$ -Amyloid Proteoforms Accumulation in the Brain of a 5xFAD Mouse Model of Alzheimer's Disease. *Int. J. Mol. Sci.* **2021**, *23*, 27. [[CrossRef](#)]
116. Wildburger, N.C.; Esparza, T.J.; LeDuc, R.D.; Fellers, R.T.; Thomas, P.M.; Cairns, N.J.; Kelleher, N.L.; Bateman, R.J.; Brody, D.L. Diversity of Amyloid-beta Proteoforms in the Alzheimer's Disease Brain. *Sci. Rep.* **2017**, *7*, 9520. [[CrossRef](#)]
117. Medvedev, A.E.; Radko, S.P.; Yurinskaya, M.M.; Vinokurov, M.G.; Buneeva, O.A.; Kopylov, A.T.; Kozin, S.A.; Mitkevich, V.A.; Makarov, A.A. Neurotoxic Effects of A $\beta$  6-42 Peptides Mimicking Putative Products Formed by the Angiotensin Converting Enzyme. *J. Alzheimers Dis.* **2018**, *66*, 263–270. [[CrossRef](#)]
118. Rudinskiy, N.; Fuerer, C.; Demurtas, D.; Zamorano, S.; De Piano, C.; Herrmann, A.G.; Spires-Jones, T.L.; Oeckl, P.; Otto, M.; Frosch, M.P.; et al. Amyloid-beta oligomerization is associated with the generation of a typical peptide fragment fingerprint. *Alzheimers Dement.* **2016**, *12*, 996–1013. [[CrossRef](#)]
119. Wang, R.; Sweeney, D.; Gandy, S.E.; Sisodia, S.S. The profile of soluble amyloid beta protein in cultured cell media. Detection and quantification of amyloid beta protein and variants by immunoprecipitation-mass spectrometry. *J. Biol. Chem.* **1996**, *271*, 31894–31902. [[CrossRef](#)]
120. Barykin, E.P.; Mitkevich, V.A.; Kozin, S.A.; Makarov, A.A. Amyloid  $\beta$  Modification: A Key to the Sporadic Alzheimer's Disease? *Front. Genet.* **2017**, *8*, 58. [[CrossRef](#)]
121. Kolmogorov, V.S.; Erofeev, A.S.; Barykin, E.P.; Timoshenko, R.V.; Lopatukhina, E.V.; Kozin, S.A.; Salikhov, S.V.; Klyachko, N.L.; Mitkevich, V.A.; Edwards, C.R.W.; et al. Scanning ion-conductance microscopy for studying  $\beta$ -amyloid aggregate formation on living cell surface. *bioRxiv* **2022**. [[CrossRef](#)]
122. Toropygin, I.Y.; Kugaevskaya, E.V.; Mirgorodskaya, O.A.; Elisseeva, Y.E.; Kozmin, Y.P.; Popov, I.A.; Nikolaev, E.N.; Makarov, A.A.; Kozin, S.A. The N-domain of angiotensin-converting enzyme specifically hydrolyzes the Arg-5-His-6 bond of Alzheimer's A $\beta$ -(1-16) peptide and its isoAsp-7 analogue with different efficiency as evidenced by quantitative matrix-assisted laser desorption/ionization time-of-flight mass spectrometry. *Rapid Commun. Mass Spectrom.* **2008**, *22*, 231–239. [[CrossRef](#)]
123. Mitkevich, V.A.; Petrushanko, I.Y.; Yegorov, Y.E.; Simonenko, O.V.; Vishnyakova, K.S.; Kulikova, A.A.; Tsvetkov, P.O.; Makarov, A.A.; Kozin, S.A. Isomerization of Asp7 leads to increased toxic effect of amyloid- $\beta$ 42 on human neuronal cells. *Cell Death Dis.* **2013**, *4*, e939. [[CrossRef](#)] [[PubMed](#)]
124. Gunn, A.P.; Wong, B.X.; Johanssen, T.; Griffith, J.C.; Masters, C.L.; Bush, A.I.; Barnham, K.J.; Duce, J.A.; Cherny, R.A. Amyloid- $\beta$  Peptide A $\beta$ 3pE-42 Induces Lipid Peroxidation, Membrane Permeabilization, and Calcium Influx in Neurons. *J. Biol. Chem.* **2016**, *291*, 6134–6145. [[CrossRef](#)] [[PubMed](#)]
125. Russo, C.; Violani, E.; Salis, S.; Venezia, V.; Dolcini, V.; Damonte, G.; Benatti, U.; D'Arrigo, C.; Patrone, E.; Carlo, P.; et al. Pyroglutamate-modified amyloid beta-peptides—A $\beta$ 25-35(pE)—strongly affect cultured neuron and astrocyte survival. *J. Neurochem.* **2002**, *82*, 1480–1489. [[CrossRef](#)] [[PubMed](#)]
126. Barnham, K.J.; Haeffner, F.; Ciccotosto, G.D.; Curtain, C.C.; Tew, D.; Mavros, C.; Beyreuther, K.; Carrington, D.; Masters, C.L.; Cherny, R.A.; et al. Tyrosine gated electron transfer is key to the toxic mechanism of Alzheimer's disease beta-amyloid. *FASEB J.* **2004**, *18*, 1427–1429. [[CrossRef](#)] [[PubMed](#)]
127. Al-Hilaly, Y.K.; Williams, T.L.; Stewart-Parker, M.; Ford, L.; Skaria, E.; Cole, M.; Bucher, W.G.; Morris, K.L.; Sada, A.A.; Thorpe, J.R.; et al. A central role for dityrosine crosslinking of Amyloid- $\beta$  in Alzheimer's disease. *Acta Neuropathol. Commun.* **2013**, *1*, 83. [[CrossRef](#)]
128. Barykin, E.P.; Petrushanko, I.Y.; Kozin, S.A.; Telegin, G.B.; Chernov, A.S.; Lopina, O.D.; Radko, S.P.; Mitkevich, V.A.; Makarov, A.A. Phosphorylation of the Amyloid-Beta Peptide Inhibits Zinc-Dependent Aggregation, Prevents Na,K-ATPase Inhibition, and Reduces Cerebral Plaque Deposition. *Front. Mol. Neurosci.* **2018**, *11*, 302. [[CrossRef](#)]

129. Kozin, S.A.; Barykin, E.P.; Telegin, G.B.; Chernov, A.S.; Adzhubei, A.A.; Radko, S.P.; Mitkevich, V.A.; Makarov, A.A. Intravenously Injected Amyloid- $\beta$  Peptide With Isomerized Asp7 and Phosphorylated Ser8 Residues Inhibits Cerebral  $\beta$ -Amyloidosis in A $\beta$ PP/PS1 Transgenic Mice Model of Alzheimer's Disease. *Front. Neurosci.* **2018**, *12*, 518. [[CrossRef](#)]
130. Lindberg, D.J.; Wranne, M.S.; Gilbert Gatty, M.; Westerlund, F.; Esbjörner, E.K. Steady-state and time-resolved Thioflavin-T fluorescence can report on morphological differences in amyloid fibrils formed by A $\beta$ (1-40) and A $\beta$ (1-42). *Biochem. Biophys. Res. Commun.* **2015**, *458*, 418–423. [[CrossRef](#)]
131. Triguero, L.; Singh, R.; Prabhakar, R. Comparative Molecular Dynamics Studies of Wild-Type and Oxidized Forms of Full-Length Alzheimer Amyloid  $\beta$ -Peptides A $\beta$ (1-40) and A $\beta$ (1-42). *J. Phys. Chem. B* **2008**, *112*, 7123–7131. [[CrossRef](#)]
132. Lim, K.H.; Collver, H.H.; Le, Y.T.H.; Nagchowdhuri, P.; Kenney, J.M. Characterizations of distinct amyloidogenic conformations of the A $\beta$  (1-40) and (1-42) peptides. *Biochem. Biophys. Res. Commun.* **2007**, *353*, 443–449. [[CrossRef](#)] [[PubMed](#)]
133. Olofsson, A.; Lindhagen-Persson, M.; Sauer-Eriksson, A.E.; Öhman, A. Amide solvent protection analysis demonstrates that amyloid- $\beta$ (1-40) and amyloid- $\beta$ (1-42) form different fibrillar structures under identical conditions. *Biochem. J.* **2007**, *404*, 63–70. [[CrossRef](#)] [[PubMed](#)]
134. Barykin, E.P.; Garifulina, A.I.; Kruykova, E.V.; Spirova, E.N.; Anashkina, A.A.; Adzhubei, A.A.; Shelukhina, I.V.; Kasheverov, I.E.; Mitkevich, V.A.; Kozin, S.A.; et al. Isomerization of Asp7 in Beta-Amyloid Enhances Inhibition of the  $\alpha$ 7 Nicotinic Receptor and Promotes Neurotoxicity. *Cells* **2019**, *8*, 771. [[CrossRef](#)] [[PubMed](#)]
135. Warmack, R.A.; Boyer, D.R.; Zee, C.-T.; Richards, L.S.; Sawaya, M.R.; Cascio, D.; Gonen, T.; Eisenberg, D.S.; Clarke, S.G. Structure of amyloid- $\beta$  (20-34) with Alzheimer's-associated isomerization at Asp23 reveals a distinct protofilament interface. *Nat. Commun.* **2019**, *10*, 3357. [[CrossRef](#)]
136. Goldblatt, G.; Matos, J.O.; Gornto, J.; Tatulian, S.A. Isotope-edited FTIR reveals distinct aggregation and structural behaviors of unmodified and pyroglutamylated amyloid  $\beta$  peptides. *Phys. Chem. Chem. Phys.* **2015**, *17*, 32149–32160. [[CrossRef](#)]
137. Hassan, R.; Abedin, F.; Tatulian, S.A. Structure of unmodified and pyroglutamylated amyloid beta peptides in lipid membranes. *Biophys. J.* **2022**, *121*, 328a. [[CrossRef](#)]
138. Rezaei-Ghaleh, N.; Kumar, S.; Walter, J.; Zweckstetter, M. Phosphorylation Interferes with Maturation of Amyloid- $\beta$  Fibrillar Structure in the N-terminus. *J. Biol. Chem.* **2016**, *291*, 16059–16067. [[CrossRef](#)]
139. Hu, Z.-W.; Vugmeyster, L.; Au, D.F.; Ostrovsky, D.; Sun, Y.; Qiang, W. Molecular structure of an N-terminal phosphorylated  $\beta$ -amyloid fibril. *Proc. Natl. Acad. Sci.* **2019**, *116*, 11253–11258. [[CrossRef](#)]
140. Hou, L.; Shao, H.; Zhang, Y.; Li, H.; Menon, N.K.; Neuhaus, E.B.; Brewer, J.M.; Byeon, I.-J.L.; Ray, D.G.; Vitek, M.P.; et al. Solution NMR Studies of the A $\beta$ (1-40) and A $\beta$ (1-42) Peptides Establish that the Met35 Oxidation State Affects the Mechanism of Amyloid Formation. *J. Am. Chem. Soc.* **2004**, *126*, 1992–2005. [[CrossRef](#)]
141. Hou, L.; Lee, H.; Han, F.; Tedesco, J.M.; Perry, G.; Smith, M.A.; Zagorski, M.G. Modification of Amyloid- $\beta$  1-42 Fibril Structure by Methionine-35 Oxidation. *J. Alzheimers Dis.* **2013**, *37*, 9–18. [[CrossRef](#)] [[PubMed](#)]
142. Medvedev, A.E.; Buneeva, O.A.; Kopylov, A.T.; Mitkevich, V.A.; Kozin, S.A.; Zgoda, V.G.; Makarov, A.A. Chemical modifications of amyloid- $\beta$ (1-42) have a significant impact on the repertoire of brain amyloid- $\beta$ (1-42) binding proteins. *Biochimie* **2016**, *128–129*, 55–58. [[CrossRef](#)] [[PubMed](#)]
143. Tolstova, A.P.; Adzhubei, A.A.; Mitkevich, V.A.; Petrushanko, I.Y.; Makarov, A.A. Docking and Molecular Dynamics-Based Identification of Interaction between Various Beta-Amyloid Isoforms and RAGE Receptor. *Int. J. Mol. Sci.* **2022**, *23*, 11816. [[CrossRef](#)] [[PubMed](#)]
144. Suvorina, M.Y.; Selivanova, O.M.; Grigorashvili, E.I.; Nikulin, A.D.; Marchenkov, V.V.; Surin, A.K.; Galzitskaya, O.V. Studies of Polymorphism of Amyloid- $\beta$  42 Peptide from Different Suppliers. *J. Alzheimers Dis.* **2015**, *47*, 583–593. [[CrossRef](#)] [[PubMed](#)]
145. Roberts, B.R.; Lind, M.; Wagen, A.Z.; Rembach, A.; Frugier, T.; Li, Q.-X.; Ryan, T.M.; McLean, C.A.; Doecke, J.D.; Rowe, C.C.; et al. Biochemically-defined pools of amyloid- $\beta$  in sporadic Alzheimer's disease: Correlation with amyloid PET. *Brain* **2017**, *140*, 1486–1498. [[CrossRef](#)]
146. Wang, Z.; Jackson, R.J.; Hong, W.; Taylor, W.M.; Corbett, G.T.; Moreno, A.; Liu, W.; Li, S.; Frosch, M.P.; Slutsky, I.; et al. Human Brain-Derived A $\beta$  Oligomers Bind to Synapses and Disrupt Synaptic Activity in a Manner That Requires APP. *J. Neurosci.* **2017**, *37*, 11947–11966. [[CrossRef](#)]
147. Yang, T.; Li, S.; Xu, H.; Walsh, D.M.; Selkoe, D.J. Large Soluble Oligomers of Amyloid  $\beta$ -Protein from Alzheimer Brain Are Far Less Neuroactive Than the Smaller Oligomers to Which They Dissociate. *J. Neurosci.* **2017**, *37*, 152–163. [[CrossRef](#)]
148. Tiiman, A.; Krishtal, J.; Palumaa, P.; Tõugu, V. In vitro fibrillization of Alzheimer's amyloid- $\beta$  peptide (1-42). *AIP Adv.* **2015**, *5*, 092401. [[CrossRef](#)]
149. Zurdo, J.; Guijarro, J.I.; Dobson, C.M. Preparation and Characterization of Purified Amyloid Fibrils. *J. Am. Chem. Soc.* **2001**, *123*, 8141–8142. [[CrossRef](#)]
150. Benseny-Cases, N.; Klementieva, O.; Cladera, J. In vitro oligomerization and fibrillogenesis of amyloid-beta peptides. *Subcell. Biochem.* **2012**, *65*, 53–74. [[CrossRef](#)]