

# The genetic organization and evolution of the broad host range mercury resistance plasmid pSB102 isolated from a microbial population residing in the rhizosphere of alfalfa

Susanne Schneiker, Mathias Keller, Marcus Dröge, Erich Lanka<sup>1</sup>, Alfred Pühler\* and Werner Selbitschka

Fakultät für Biologie, Lehrstuhl für Genetik, Universität Bielefeld, Postfach 100131, D-33501 Bielefeld, Germany and <sup>1</sup>Max-Planck-Institut für Molekulare Genetik, Dahlem, D-14195 Berlin, Germany

Received June 28, 2001; Revised October 8, 2001; Accepted October 22, 2001

DDBJ/EMBL/GenBank accession no. AJ304453

## ABSTRACT

Employing the biparental exogenous plasmid isolation method, conjugative plasmids conferring mercury resistance were isolated from the microbial community of the rhizosphere of field grown alfalfa plants. Five different plasmids were identified, designated pSB101–pSB105. One of the plasmids, pSB102, displayed broad host range (bhr) properties for plasmid replication and transfer unrelated to the known incompatibility (Inc) groups of bhr plasmids IncP-1, IncW, IncN and IncA/C. Nucleotide sequence analysis of plasmid pSB102 revealed a size of 55 578 bp. The transfer region of pSB102 was predicted on the basis of sequence similarity to those of other plasmids and included a putative mating pair formation apparatus most closely related to the type IV secretion system encoded on the chromosome of the mammalian pathogen *Brucella* sp. The region encoding replication and maintenance functions comprised genes exhibiting different degrees of similarity to RepA, KorA, IncC and KorB of bhr plasmids pSa (IncW), pM3 (IncP-9), R751 (IncP-1 $\beta$ ) and RK2 (IncP-1 $\alpha$ ), respectively. The mercury resistance determinants were located on a transposable element of the Tn5053 family designated Tn5718. No putative functions could be assigned to a quarter of the coding capacity of pSB102 on the basis of comparisons with database entries. The genetic organization of the pSB102 transfer region revealed striking similarities to plasmid pXF51 of the plant pathogen *Xylella fastidiosa*.

## INTRODUCTION

The deliberate release of genetically engineered microorganisms (GEMs) into the environment has raised concern about the potential negative ecological impact of the organisms and the nucleic acid they carry. One concern is related to the genetic stability of released GEMs. The acquisition of genes from the indigenous bacterial community by released GEMs could alter their properties and may modulate the potential ecological effects exerted by GEMs. To assess the nature of such events the acquisition of mercury resistance by deliberately released strains has been studied.

Genetic determinants conferring resistance to mercury (Hg<sup>R</sup>) are ubiquitous in bacterial species of various natural environments (1). Mercury resistance genes (*mer*) are often located on mobile genetic elements such as transposons or conjugative plasmids. Self-transmissible plasmids, some of which have broad host range (bhr) properties, have been isolated from bulk soil, rhizosphere soils and the phyllosphere of plants employing *Pseudomonas* spp. as recipients (2–4). During a deliberate release experiment with a *Pseudomonas* strain tagged with the *lacZY* genes, acquisition of mercury resistance plasmids in the phyllosphere of sugar beet was readily observed (5). The acquisition of such plasmids was correlated with a specific stage in sugar beet development and was shown to temporarily increase the ecological fitness of the GEM compared to its plasmid-free parent strain (6).

In the context of a joint project the first deliberate release of GEMs was performed in Germany (7). The GEMs were derivatives of *Sinorhizobium meliloti* strain 2011 genetically tagged with the firefly luciferase gene (*luc*) mediating bioluminescence (8). These bacteria were released in 1995 at field plots of the Federal Agricultural Research Center (FAL, Braunschweig), mainly for monitoring purposes. The question arose whether self-transmissible plasmids conferring mercury resistance present at the release site were able to transfer to and be

\*To whom correspondence should be addressed. Tel: +49 521 1065604; Fax: +49 521 1065626; Email: puehler@genetik.uni-bielefeld.de

Present address:

Marcus Dröge, MWG Biotech AG, Anzinger Strasse 7, D-85560 Ebersberg, Germany

maintained in *S.meliloti* and whether these were related to plasmids already characterized.

Thus the main objective of this work was the identification and characterization of conjugative mercury resistance plasmids residing in the microbial population of the alfalfa rhizosphere. Self-transmissible plasmids conferring Hg<sup>R</sup> were exogenously isolated employing an *S.meliloti* recipient. One environmental mercury resistance plasmid, designated pSB102, which exhibited *bhr* properties was selected for sequence analysis. The molecular structure of this plasmid pSB102 as well as its relatedness to other plasmids and chromosomal DNA fragments are reported.

## MATERIALS AND METHODS

### Bacterial strains and plasmids

Bacterial strains and plasmids used in this study are listed in Table 1. *Escherichia coli* strains and *Pseudomonas* sp. B131 and its derivatives were grown in Luria–Bertani (LB) medium at 37°C and 30°C, respectively. *Sinorhizobium meliloti* strains were grown at 30°C in Tryptone yeast medium. The final concentrations of antibiotics for selective growth were 200 µg ml<sup>-1</sup> streptomycin and 100 µg ml<sup>-1</sup> rifampicin. Bacterial strains were stored at -20°C in 50% glycerol.

### Construction of the *S.meliloti* strain FP2 tagged with green fluorescent protein (GFP)

The *gfp* marker gene was introduced into *S.meliloti* strain M4 using suicide plasmid pAG308-1 (12). Plasmid pAG308-1 contains a Tn5-derived mini transposon, carrying a promoterless *gfp* gene and a kanamycin resistance gene. pAG308-1 was mobilized from *E.coli* strain S17-1  $\delta$ pir to *S.meliloti* M4 in filter matings. Neomycin-resistant transconjugants were selected on TY agar containing 50 µg ml<sup>-1</sup> neomycin and 7 µg ml<sup>-1</sup> nalidixic acid. Transconjugants arose at a frequency of  $\sim 4.4 \times 10^{-8}$  per recipient cell. A selected colony designated FP2 exhibited strong fluorescence, indicating that the promoterless *gfp* gene was under the control of a strong indigenous *S.meliloti* promoter (data not shown).

### Exogenous plasmid isolation from the bacterial community of the alfalfa rhizosphere

Conjugative plasmids of the indigenous bacterial community inhabiting the root surface of field grown alfalfa plants were isolated using *gfp*-tagged *S.meliloti* strain FP2 as recipient in filter crosses. For each mating 20 g root material from two different field plots at the FAL in Braunschweig was collected. The roots were cut into pieces and transferred to 200 ml Erlenmeyer flasks. An aliquot of 100 ml of PBS buffer (2) was added and the flasks were shaken for 20 min at 250 r.p.m. The supernatant was centrifuged for 5 min at 1000 g to remove soil particles. Bacterial cells were pelleted by 10 min centrifugation of the supernatant at 8000 g. The pellet was resuspended in 2 ml of PBS. In the first mating 0.6 ml of rhizosphere suspension, corresponding to 3.3 g root material, was mixed o/n (overnight) with 0.3 ml of cultures of *S.meliloti* FP2. In the second mating 1 ml of rhizosphere suspension, corresponding to 5 g root material, was mixed o/n with 0.5 ml of culture of *S.meliloti* FP2. The mating mixture as well as the appropriate controls of 1 ml of rhizosphere suspension and 1 ml of recipient

culture were concentrated by 30 s centrifugation at 14 000 g and were spotted on nitrocellulose filters (Sartorius AG, Göttingen, Germany). Filters were incubated at 30°C for 24 h on R2A agar plates (Difco Laboratories, Detroit, MI) supplemented with 100 µg ml<sup>-1</sup> cycloheximide. The titer of rhizosphere bacteria was determined on R2A supplemented with 100 µg ml<sup>-1</sup> cycloheximide. Mercury resistance served as the selection marker for plasmid transfer and streptomycin was used to counterselect against the bacterial community. Transconjugants were selected on TY medium containing 100 µg ml<sup>-1</sup> cycloheximide, 200 µg ml<sup>-1</sup> streptomycin and 20 µg ml<sup>-1</sup> mercury(II) chloride (HgCl<sub>2</sub>). *Sinorhizobium meliloti* transconjugants were identified on the basis of their green fluorescence phenotype under UV irradiation.

### Plasmid conjugation tests by filter matings

An aliquot of 1 ml of a donor culture was mixed o/n with 0.5 ml of a culture of the recipient strain and concentrated by 30 s centrifugation at 14 000 g. Matings were performed as described above, using filters placed on TY or LB medium. Serial dilutions of mating mixtures were plated onto TY or LB plates supplemented with the appropriate antibiotics and heavy metals.

### Analysis of plasmids for antibiotic and heavy metal resistances

Five milliliters of TY medium containing various concentrations of the selective agent under investigation were inoculated with 50 µl of a late logarithmic culture of each plasmid-harboring strain. After incubation o/n the OD<sub>580</sub> values of the cultures were determined and compared with OD<sub>580</sub> values of the control cultures of *S.meliloti* FP2 lacking the corresponding plasmid. The following compounds were used in resistance tests: 0–10 µg ml<sup>-1</sup> tetracycline, 0–36 µg ml<sup>-1</sup> amikacin, 0–15 µg ml<sup>-1</sup> gentamicin, 0–70 µg ml<sup>-1</sup> spectinomycin, 0–120 µg ml<sup>-1</sup> chloramphenicol, 0–150 µg ml<sup>-1</sup> novobiocin, 0–10 µg ml<sup>-1</sup> nurseothricin, 0–5 µg ml<sup>-1</sup> norfloxacin, 0–30 µg ml<sup>-1</sup> rifampicin, 0–40 µg ml<sup>-1</sup> HgCl<sub>2</sub>, 0–20 µg ml<sup>-1</sup> phenylmercuric acetate (PMA, C<sub>6</sub>H<sub>5</sub>HgOCOCH<sub>3</sub>), 0–0.5 mM cadmium sulfate (CdSO<sub>4</sub>), 0–3 mM cobalt chloride (CoCl<sub>2</sub>), 0–10 mM copper sulfate (CuSO<sub>4</sub>), 0–20 mM ferric chloride (FeCl<sub>3</sub>), 0–3 mM nickel sulfate (NiSO<sub>4</sub>) and 0–5 mM zinc sulfate (ZnSO<sub>4</sub>).

### Subcloning, sequencing and annotation of plasmid pSB102

To determine the DNA sequence of pSB102, plasmid DNA was digested with *EcoRI* and ligated with *EcoRI*-linearized pBluescript II KS(+) vector. Plasmid DNA was isolated using a modified HB lysis method (13). The protocol was modified to include purification by CsCl–ethidium bromide buoyant density centrifugation (14). The preparation of competent *E.coli* cells and the transformation procedures were performed according to Sambrook *et al.* (15). Ten *EcoRI* fragments ranging in size from 0.5 to 11 kb were cloned in vector pBluescript II KS(+). The ends of the *EcoRI* fragments were sequenced with M13 standard forward and reverse primers. Using this sequence information, two types of specific walking primers were designed. One type was used for walking on the cloned fragments. The second type, outwardly directed from the *EcoRI* fragments, was employed for walking on pSB102 DNA to connect the fragments. For sequencing purposes

Table 1. Bacterial strains and plasmids used

Strain or plasmid	Relevant characteristics	Reference
<i>Sinorhizobium meliloti</i>		
L33	<i>luc</i> tagged derivative of <i>S. meliloti</i> 2011	(8)
L331	spontaneous Rif <sup>r</sup> derivative of <i>S. meliloti</i> L33	This paper
M4	<i>gusA</i> tagged derivative of <i>S. meliloti</i> 2011	(8)
FP2	Km <sup>r</sup> Green fluorescent derivative of <i>S. meliloti</i> M4	This paper
FP21	spontaneous Rif <sup>r</sup> derivative of <i>S. meliloti</i> FP2	This paper
<i>Escherichia coli</i>		
DH5 $\alpha$ <i>mcr</i>	F <sup>+</sup> and <i>A1 supE44 thi-I<sup>-</sup> recA1 gyr A96 relA1 deoR <math>\Delta</math> (lacZYA-argF) -U169 <math>\Phi</math>80dlacZ<math>\Delta</math>M15 <i>mcrA</i> <math>\Delta</math>(<i>mrr-hsdRMS-mcrBC</i>) <math>\lambda</math></i>	(9)
HB101	F <sup>+</sup> <i>hsdR hsdM leu pro thi lacY galK ara xyl rpsL sup recA13</i>	(10)
HBR101	spontaneous Rif <sup>r</sup> derivative of <i>E. coli</i> HB101	This paper
S17-1	Derivative of strain <i>E. coli</i> S17-1, lysogenic for phage $\lambda$ carrying the Pir protein of plasmid R6K	(11)
other species		
B131	spontaneous Rif <sup>r</sup> derivative of <i>Pseudomonas</i> sp. B13	(12)
Plasmids		
pAG308-1	Ap <sup>r</sup> Km <sup>r</sup> , pR6K-based suicide plasmid carrying a <i>gfp</i> (promotorless)-Km <sup>r</sup> -Gm <sup>r</sup> cassette on a <i>Tn5</i> -derived mini-transposon	(12)
pBluescript II KS (+)	Ap <sup>r</sup> , <i>lacZ'</i>	Stratagene
RA1	IncA/C	strain collection Bielefeld
R702	IncP-1 $\alpha$	strain collection Bielefeld
pKM101	IncN	strain collection Bielefeld
pSa	IncW	strain collection Bielefeld
pSB101	conjugative Hg <sup>r</sup> plasmid	This paper
pSB102	conjugative broad-host range Hg <sup>r</sup> plasmid	This paper
pSB103	conjugative Hg <sup>r</sup> plasmid	This paper
pSB104	conjugative Hg <sup>r</sup> plasmid	This paper
pSB105	conjugative Hg <sup>r</sup> plasmid	This paper

Rif, rifampicin; Ap, ampicillin; Km, kanamycin; Gm, gentamicin; Hg, mercury.

plasmid DNA was isolated using the Nucleobond AX 100 kit (Macherey-Nagel, Düren, Germany) according to the protocol provided by the manufacturer. DNA was sequenced by the dideoxy chain termination method (16) using PCR-based sequencing with a Taq Dye Deoxy Terminator Cycle-Sequencing Kit on an ABI Prism 377 DNA Sequencer (Applied Biosystems, Perkin Elmer) by IIT Biotech/Bioservice GmbH (Bielefeld, Germany). Base calling was done using PHRED. Walking primers were designed with PRIDE from the Staden package. Sequence assembly was done with the GAP4 sequence assembly tool from the Staden package (17).

Annotation was performed using the automated genome interpretation system GenDB (Center for Genome Research, Bielefeld, Germany). Open reading frames (ORFs) were predicted by GLIMMER 2.0 (18). Each identified ORF was the subject of BLAST database similarity searches (19). The complete sequence was searched for  $\sigma^{70}$ -dependent promoters using Neural Network Promoter Prediction (NNPP) (20). Repeat regions within the pSB102 sequence were analyzed with the computer program REPuter (21). Prediction of transmembrane helices was performed by the dense alignment surface (DAS) method using the DAS transmembrane prediction server

(22). Amino acid sequence similarities were calculated with the ALIGN computer program (23). Prediction of signal peptides was performed with the neural network systems SignalP (24). The sequence of plasmid pSB102 is deposited in the EMBL nucleotide sequence database under accession no. AJ304453.

### Classification of plasmids by PCR analyses

Template DNA was obtained from single colonies of *S.meliloti*. For this purpose bacterial colonies were suspended in 50  $\mu$ l of lysis buffer (0.5 M NaOH, 0.25% SDS) and boiled for 5 min. An aliquot of 1.5  $\mu$ l of a 10-fold dilution of the boiled sample was used in PCR. PCR was carried out in a volume of 25  $\mu$ l, containing 1.6  $\mu$ M both forward and reverse primers, 0.2 mM each dNTP, 1 U *Taq* polymerase (Qiagen, Hilden, Germany) and 1 $\times$  PCR buffer (Qiagen). After an initial step of 5 min at 94°C, PCR amplification involved 30 cycles of 1 min at 94°C for denaturation, 1 min at the annealing temperature recommended for the respective primer system and 1 min polymerisation at 72°C. The final primer extension reaction was done for 10 min at 72°C. PCR products were analyzed in 1.5% agarose gels with TA buffer (40 mM Tris, 10 mM sodium acetate, 1 mM EDTA). Primers employed for PCR-based classification were specific for incompatibility (Inc) groups A/C (25), N, P and W (26). PCR analyses were performed using plasmids RA1, RN3, R702 and pSa (Table 1) as positive controls.

## RESULTS AND DISCUSSION

### Isolation and characterization of conjugative mercury resistance plasmids from the microbial community of the alfalfa rhizosphere

To assess the presence of conjugative mercury resistance plasmids at a field site where *S.meliloti* GEMs tagged with the firefly *luc* gene had been released, the exogenous plasmid isolation method was employed. Using the alfalfa bacterial rhizosphere communities, sampled twice during November 1998 and July 1999 from two different field plots, as donors in filter matings with *gfp*-tagged *S.meliloti* strain FP2 as recipient, mercury-resistant colonies exhibiting the GFP phenotype were readily recovered. According to their *EcoRI* restriction pattern a total of five different plasmids designated pSB101–pSB105 were identified (Table 2). During the first mating in November 1998 two plasmids were isolated, which differed in their *EcoRI* restriction fragment patterns. Transconjugants obtained from the plot I sample carried plasmid pSB101 and transconjugants obtained from the plot II sample carried plasmid pSB102. In the second mating performed in July 1999 five distinct plasmids were recovered. Transconjugants obtained from the plot I sample carried plasmids pSB102 and pSB104 and transconjugants obtained from the plot II sample carried plasmids pSB101, pSB103 and pSB105. The fact that plasmids pSB101 and pSB102 were repeatedly recovered over time at a spatial distance of at least 3 m may indicate that these two plasmids were abundant in bacterial communities of the field site.

As a first step in the characterization of the newly identified plasmids, their sizes were determined on the basis of their restriction fragment patterns in agarose gels. These analyses revealed sizes ranging from 52 to 75 kb (Table 2). To address

**Table 2.** Characterization of selected properties of exogenously isolated mercury resistance plasmids

Plasmid	Size (in kb)	Conjugative transfer <sup>a</sup> from <i>S. meliloti</i> to		
		<i>S. meliloti</i>	<i>Pseudomonas</i>	<i>E. coli</i>
pSB101	56	$\sim 10^5$	n.d. ( $<10^{-8}$ )	n.d. ( $<10^{-6}$ )
pSB102	56	$\sim 10^2$	$\sim 10^2$	$\sim 10^4$
pSB103	72	$\sim 10^4$	n.d. ( $<10^{-8}$ )	n.d. ( $<10^{-6}$ )
pSB104	52	$\sim 10^5$	n.d. ( $<10^{-8}$ )	n.d. ( $<10^{-6}$ )
pSB105	75	$\sim 10^2$	n.d. ( $<10^{-8}$ )	n.d. ( $<10^{-6}$ )

<sup>a</sup>The frequencies of conjugative transfers are given per recipient cell. *S.meliloti* strain FP2 served as the donor and *S.meliloti* strain L331, *Pseudomonas* sp. strain B131 and *E.coli* strain HBR101 served as recipients in the respective mating experiments. Transconjugants were selected on LB or TY medium containing 20  $\mu$ g ml<sup>-1</sup> HgCl<sub>2</sub> and 100  $\mu$ g ml<sup>-1</sup> rifampicin. The values given in parentheses indicate the limit of detection. n.d., not detected.

the question of whether additional resistances to antibiotics or heavy metals were located on the various plasmids, resistance tests were performed using the antibiotics and heavy metals listed in Materials and Methods. All plasmids conferred resistance to inorganic (HgCl<sub>2</sub>) and organic (PMA) mercury compounds. Plasmids pSB103 and pSB104 were resistant to 10  $\mu$ g ml<sup>-1</sup> HgCl<sub>2</sub> but were unable to grow at 20  $\mu$ g ml<sup>-1</sup> HgCl<sub>2</sub>, whereas all other plasmids conferred resistance to 20  $\mu$ g ml<sup>-1</sup> HgCl<sub>2</sub>. Plasmids pSB101 and pSB102 showed resistance to 10  $\mu$ g ml<sup>-1</sup> PMA, while all the other plasmids were only able to grow at 4  $\mu$ g ml<sup>-1</sup> PMA. Plasmid-free *S.meliloti* FP2 was unable to grow in liquid medium at 5  $\mu$ g ml<sup>-1</sup> HgCl<sub>2</sub> or 2  $\mu$ g ml<sup>-1</sup> PMA. None of these five plasmids displayed resistance against the antibiotics tetracycline, amikacin, gentamicin, spectinomycin, chloramphenicol, novobiocin, norfloxacin, nurseothricin and rifampicin or heavy metal ions of cadmium, cobalt, copper, iron, nickel and zinc.

To characterize the host range of the newly isolated plasmids, mating experiments were performed. *Sinorhizobium meliloti* FP2 served as the donor strain and three different bacterial strains, *S.meliloti* L331 belonging to the  $\alpha$ -Proteobacteria and *Pseudomonas* sp. B131 and *E.coli* HBR101 belonging to the  $\gamma$ -Proteobacteria, were used as recipients. As expected, all plasmids were self-transmissible. The transfer frequencies were in the range  $10^{-2}$ – $10^{-5}$  (Table 2). Plasmid pSB102 was transferred to all recipients used and thus displayed *bhr* properties, whereas the host range of all other plasmids was restricted to *S.meliloti* (Table 2). Employing a Tn5-tagged derivative of plasmid pSB102, transfer from *E.coli* to *Ralstonia eutropha* strain 11098, which belongs to the  $\beta$ -Proteobacteria, was also observed (unpublished results). PCR replicon typing employing primers specific for Inc groups IncP-1, IncW, IncN and IncA/C, respectively, yielded no PCR products, suggesting that plasmid pSB102 belongs to an as yet undescribed group of *bhr* plasmids.

### Sequence analysis of *bhr* mercury resistance plasmid pSB102 employing an approach which minimizes the number of sequencing reactions

The 55 578 bp sequence of plasmid pSB102 was determined by primer walking. Employing this strategy the entire

double-stranded DNA sequence was established with a minimal number of 260 sequencing reactions, leading to a 2.5-fold coverage of the genome. The average GC content of the plasmid is 59.8%. No obvious significant deviations in the GC content were observed. Potential ORFs were identified with an interpolated Markov model using GLIMMER2.0 (18). GLIMMER2.0 predicted a total of 101 frequently overlapping ORFs. The annotation of plasmid pSB102 was performed using the automated genome interpretation system GenDB. Taking the results of database searches and the existence of putative Shine–Dalgarno sequences (Table 3) into account, the number of ORFs was reduced from 101 to 66. BLASTX searches with short sequence segments of pSB102 revealed the existence of three further ORFs (*ssb*, *traC* and *traD*), which were not predicted by GLIMMER2.0.

Significant similarities to database entries for 46 of a total of 69 hypothetical ORF-encoded proteins were identified. Putative functions could be assigned to 39 ORFs of pSB102. These genetic functions comprise genes for: (i) mating pair formation (Mpf); (ii) DNA transfer and replication (Dtr); (iii) plasmid replication (Rep); (iv) plasmid maintenance (Mai); and (v) a mercury resistance transposon. The relevant information about putative proteins of pSB102, such as GC content of coding regions, number of amino acid residues and molecular weight, as well as the closest relatives among protein sequences stored in the databases, are summarized in Table 3. The genetic map of pSB102 is shown in Figure 1. The complete sequence was searched for  $\sigma^{70}$ -dependent promoters using the NNPP program (20). The NNPP program predicted a total of 110 putative promoters using a threshold score of 0.8, which recognizes 60% of all promoters, with a rate of false positive predictions of 0.4%. Finally, 14 putative pSB102 promoters were selected from the NNPP predicted promoters by the logic of gene organization (Table 4 and Fig. 1). One promoter,  $P_{merR}$ , was chosen due to conformity with published promoter/operator sequences of mercury resistance operons.

#### Putative mating pair formation genes of plasmid pSB102 show highest similarity to *Brucella* sp. *virB* genes encoding a type IV secretion system

Transfer of conjugative plasmids requires the interaction of a number of cell surface components, to form a mating bridge between donor and recipient strains. The putative Mpf genes of pSB102, designated *traA* to *traM*, show highest similarity to the *virB* gene cluster of *Brucella suis* (27) and *Brucella abortus* (28; Fig. 2). Moreover, significant similarity was noted to the *tra* genes of plasmid pXF51 (29), transfer (*tra*) genes of bhr plasmid pKM101 and the *virB* gene cluster of the *Agrobacterium tumefaciens* plasmid pTiA6.

*traA*, *traC*. The predicted pSB102 TraA protein contains the amino acid motifs  $_{22}\text{AVVHVES}_{28}$ ,  $_{69}\text{GVAQVN}_{74}$  and  $_{127}\text{YYSG}_{130}$  related to those of blocks A, B and C associated with the active site of the *E. coli* soluble lytic transglycosylase (30). The core region of propilin-like proteins, such as TrbC of IncP-1 plasmids, was found to be highly conserved, including a LepB cleavage site of *E. coli* leader peptidase I and two transmembrane helices in the central part (31). The pSB102 TraC protein contains an N-terminal peptidase cleavage site ( $_{31}\text{AFA}\downarrow\text{QG}_{35}$ ) at positions 33–34 and two predicted transmembrane helices in the remaining part of the protein (positions

49–66 and 84–91). Hence, pSB102 TraC may be post-translationally processed at the N-terminus, by removal of a 33 amino acid leader peptide and cyclization. IncP-1-like C-terminal maturation of the pSB102 propilin by a TraF-like peptidase might occur, because a cyclization recognition site ( $_{94}\text{AELA}_{97}$ ) is conserved near the C-terminus (31).

*traE*, *traF*, *traH*. The pSB102 TraE protein contains a Walker A nucleoside triphosphate (NTP)-binding domain  $_{457}\text{GQSGAGKTV}_{465}$  (32) which is conserved in VirB4 homologs. The *Agrobacterium* VirB4 protein is tightly associated with the cytoplasmic membrane and is proposed to form dimers (33). The *traF* encoded protein of pSB102 displays a putative signal peptide cleavage site at residues 20–21 ( $_{18}\text{ANA}\downarrow\text{QI}_{22}$ ), indicating that it may be exported. The TraH protein of plasmid pSB102 contains five putative transmembrane domains as predicted with the DAS transmembrane prediction server (22).

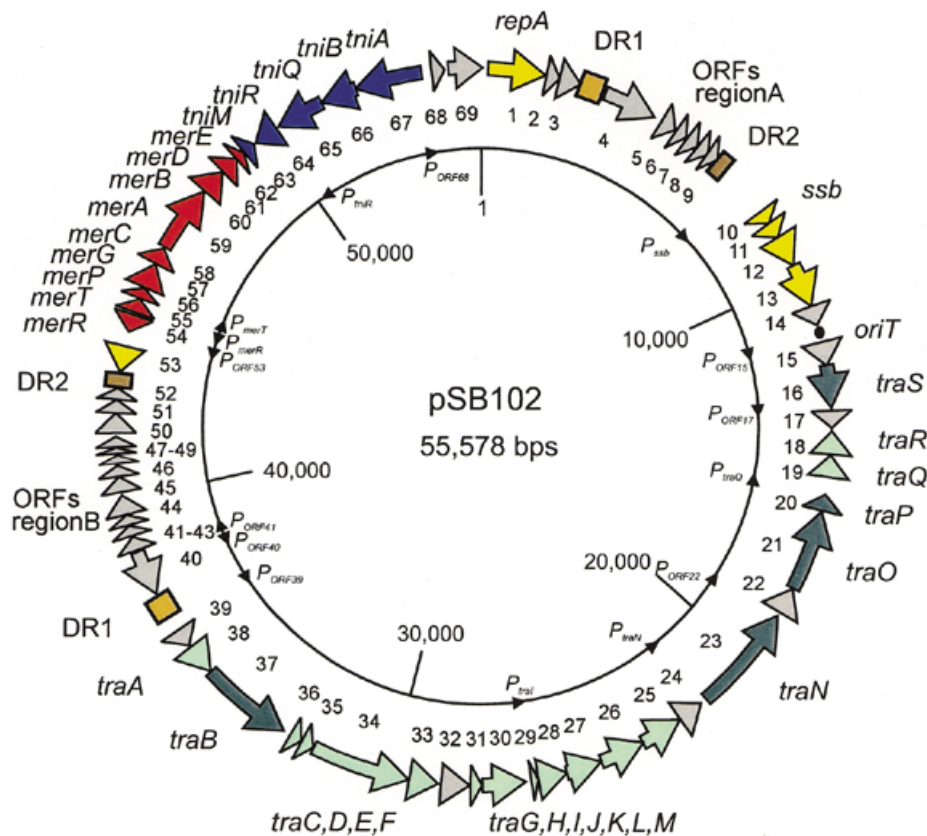
*traI*. TraI of pSB102 contains a lipoprotein consensus ( $_{14}\text{LAGC}_{17}$ ) sequence, suggesting that, like *Agrobacterium* VirB7, it is anchored to the outer membrane. In *Agrobacterium* the periplasmic VirB9 protein interacts via disulfide bridges with the VirB7 lipoprotein. The pSB102 TraI protein contains a single cysteine residue which is located in the putative signal sequence, whereas the plasmid pSB102 VirB9-like protein, TraK, lacks any cysteine residues. Therefore, if TraI and TraK of pSB102 form a complex, this interaction is not mediated by a disulfide bond. Using a yeast two-hybrid system circumstantial evidence has been presented that *Agrobacterium* VirB7 and VirB9 could also form a heterodimer without disulfide bond formation (34).

*traM*. Key players of the type IV secretion system are energy generators, probably in the form of ATPases. The pSB102 TraM protein contains four highly conserved motifs (35), which are common among the members of the VirB11 family: a nucleotide-binding site type A (Walker A Box  $_{183}\text{GETGSGKTT}_{191}$ ), an aspartate box ( $_{204}\text{QRITIEDVPEL}_{215}$ ), a nucleotide-binding site type B (Walker B Box  $_{250}\text{LRMKPTRILLAELRG}_{264}$ ) and a histidine box ( $_{276}\text{SGHGGSSITSLHAG}_{288}$ ). Using the Genomenclature classification system for hexameric NTPases (36; <http://cpmcnet.columbia.edu/dept/figurski/genomenclature/>), which allows the online submission of VirB11 homologous proteins, the pSB102 TraM protein grouped to the VirB11 subfamily of NTPases. Interestingly, the VirB11 subfamily exclusively comprises NTPases implicated in the delivery of virulence factors, such as pertussis toxin, or the *A. tumefaciens*-mediated delivery of oncogenic T-DNA to plant cells.

*traQ*, *traR*. Two accessory genes, *traQ* and *traR*, related to ORF12 of the *B. suis* and *B. abortus* *virB* cluster and to *trbM* of IncP-1 $\alpha$  plasmid RP4 and IncP-1 $\beta$  plasmid R751, respectively, complete the pSB102 putative Mpf genes. ORF12 of *B. suis* was first discovered as an addition to the *virB* operon. No similar ORFs were present in either the *Agrobacterium* pTi plasmid or in IncP-1 $\alpha$  or IncW plasmids. IncP-1 $\beta$  plasmid R751 of *Enterobacter aerogenes*, however, encodes an outer membrane protein specified by the *upf30.5* gene (P71192), which shows similarity to TraQ of pSB102. The putative pSB102 TraQ protein has a lipoprotein consensus sequence

Table 3. Location of the coding regions of pSB102 and the closest relatives of the deduced proteins

ORF	Gene	Position 5'end	3'end	putative Shine-Dalgarno Sequences <sup>a</sup>	GC content (%)	Protein Length (aa)	Protein Size (kDa)	closest relationship function / microorganism / (identity) <sup>b</sup>	Accession no. <sup>c</sup>
ORF1	<i>repA</i>	44	1498	catttAAGGgacagcgcgacATGact	61.1	484	54.0	replication initiation protein <i>Shigella flexneri</i> pSa (24%)	Q04559
ORF2	<i>hyp</i>	1512	1853	tttctgacgAGGAtattcaATGgga	54.0	113	12.7	-	-
ORF3	<i>hyp</i>	1846	2397	cgagcaaaacgacatcagaATGcct	61.6	183	19.6	-	-
ORF4	<i>hyp</i>	3043	4401	ccaccAAGGcgagctccacATGaat	60.2	452	50.7	<i>Xylella fastidiosa</i> pXF51 (39%)	Q9PHE6
ORF5	<i>hyp</i>	4674	5078	atggttGGAGcttaatcgacATGgca	59.7	134	15.4	-	-
ORF6	<i>hyp</i>	5109	5408	cccttgcGGAGactcgccacATGgac	59.9	99	10.6	-	-
ORF7	<i>hyp</i>	5436	5765	caacagcAGGAGaacaacATGaac	63.0	109	12.2	<i>X. fastidiosa</i> (50%)	Q9PBS3
ORF8	<i>hyp</i>	5762	6079	tgccggccGGAGctgtgaaATGaat	61.6	105	10.9	-	-
ORF9	<i>hyp</i>	6153	6572	cgttAAGcAGGTaaaccgcATGaaa	58.5	139	14.4	-	-
ORF10	<i>ssb</i>	7930	8286	cgigccactGGAGaacgicATGcg	54.8	118	13.4	single stranded binding protein <i>Enterobacter aerogenes</i> RK2 (29%)	Q02327
ORF11	<i>hyp</i>	8290	8691	tcAAGGcgagtgtgtgagcaATGgcg	58.1	133	14.8	partition gene repressor <i>Pseudomonas putida</i> pM3 (19%)	Q9R214
ORF12	<i>hyp</i>	8688	9485	ttttAAGGAGcattcgccATGaaa	54.0	265	29.1	active partitioning <i>E. aerogenes</i> R751 (32%)	P97149
ORF13	<i>hyp</i>	9478	10584	gacctGGGAGttgaacaagATGctt	58.4	368	39.6	regulation of gene expression <i>E. aerogenes</i> RK2 (32%)	P07674*
ORF14	<i>hyp</i>	10581	11063	ctgctgaccGAGGcgcgaaaATGaac	61.9	160	17.7	<i>Thermotoga maritima</i> (29%)	Q9X1Z6
ORF15	<i>hyp</i>	11494	12099	taattggatGGAGGccttGTGcgc	56.4	201	22.9	<i>X. fastidiosa</i> pXF51 (22%)	Q9PHG0
ORF16	<i>traS</i>	12080	13138	acaaatcAGGGGatcgcgATGgca	60.5	352	39.2	relaxase <i>X. fastidiosa</i> pXF51 (24%)	Q9PHG1
ORF17	<i>hyp</i>	13204	13641	tagggtattAAGGggcgtATGtca	54.3	145	16.1	-	-
ORF18 c	<i>traR</i>	14291	13707	cgctAGGAGataggaactATGaaa	58.2	194	21.4	cell-cell contact <i>E. coli</i> RP4 (46%)	Q03537
ORF19 c	<i>traQ</i>	14860	14306	tcctattacGGGGTtcacacATGcac	61.1	184	19.7	outer membrane protein <i>B. suis</i>	Q9RPX3
ORF20 c	<i>traP</i>	15705	15292	gtcgttaAGGAGagttagtATGcgt	58.2	137	15.1	unknown function <i>E. coli</i> RP4 (31%)	P27188*
ORF21 c	<i>traO</i>	17763	15718	aacgatAAGGgctacgcaATGgaa	59.4	681	75.6	<i>X. fastidiosa</i> pXF51 (21%)	Q9PHI8
ORF22 c	<i>hyp</i>	18435	17776	atcaactAGGAGaacctctATGtct	57.8	219	24.1	-	-
ORF23 c	<i>traN</i>	21256	18527	gtcaccAAGGAGcgttaagcATGgaa	59.6	909	99.6	coupling of Dtr and Mpf <i>X. fastidiosa</i> pXF51 (33%)	Q9PHI9
ORF24 c	<i>hyp</i>	22058	21411	gggcccgtgAGGAgcctttATGgac	56.7	215	24.0	-	-
ORF25 c	<i>traM</i>	23145	22069	ggactttcGGGTgigtaccATGtgc	57.5	358	39.9	NTP binding protein <i>B. abortus</i> (72%)	Q9KIS5
ORF26 c	<i>traL</i>	24274	23129	aaatcgggAGGttagagaaATGaac	62.2	381	39.6	inner membrane protein <i>B. abortus</i> (49%)	Q9KIS6
ORF27 c	<i>traK</i>	25167	24271	gaaatgctGGGGTtGgacaATGaaa	58.7	298	33.0	periplasmic protein <i>B. suis</i> (55%)	Q9RPX6
ORF28 c	<i>traJ</i>	25889	25164	atttcaAAGGGGAGtaactATGttc	58.1	241	26.9	inner membrane protein <i>B. suis</i> (53%)	Q9RPX7
ORF29 c	<i>traI</i>	26069	25893	ctcaactAGGACcaactATGaaa	59.2	58	6.1	periplasmic/outer membrane protein <i>B. suis</i> (49%)	Q9RPX8
ORF30 c	<i>traH</i>	27285	26203	aagaatAGGAcgtgacgtATGgac	60.8	360	37.9	inner membrane protein <i>B. suis</i> (30%)	Q9RPX9
ORF31 c	<i>traG</i>	27578	27297	aactgatAGGAGattcactATGaaa	63.4	93	9.9	<i>X. fastidiosa</i> (32%)	Q9PBH3
ORF32 c	<i>hyp</i>	28312	27593	attcgcAGGGGaacggcgATGaaa	59.3	239	25.6	-	-
ORF33 c	<i>traF</i>	29108	28380	caagcaagcgtGAGGTGActATGaaa	60.3	242	26.6	putative pilus protein <i>B. suis</i> (41%)	Q9RPY0
ORF34 c	<i>traE</i>	31605	29116	gaacgggaaagtGAGGcgcgATGaac	57.3	829	95.0	NTP binding protein <i>B. suis</i> (73%)	Q9RPY1
ORF35 c	<i>traD</i>	31936	31613	tgggatAAGGgtagcagcATGtgc	59.2	107	12.0	accessory mpf protein <i>B. suis</i> (50%)	Q9RPY2
ORF36 c	<i>traC</i>	32257	31949	actttGGAGtcgaactactATGgaa	60.5	102	10.7	putative pilin <i>B. suis</i> (48%)	Q9RPY3
ORF37 c	<i>traB</i>	34761	32440	tcgctctgAGGAcgattATGaaa	58.5	773	86.2	topoisomerase <i>X. fastidiosa</i> pXF51 (42%)	Q9PHK2
ORF38 c	<i>traA</i>	35550	34771	gatgaateGGAGacagaaacATGctg	62.0	259	27.4	lytic transglycosylase <i>B. suis</i> (51%)	Q9RPY4
ORF39 c	<i>hyp</i>	36075	35602	taagatAGGAcgctttcaacATGacc	51.4	157	18.1	-	-
ORF40 c	<i>hyp</i>	38265	37114	gggcccgttccccgcgtaccATGccc	64.6	383	39.4	-	-
ORF41	<i>hyp</i>	38430	38654	taagttAAGGAGcaaggcATGaac	59.5	74	8.2	-	-
ORF42	<i>hyp</i>	38681	38947	ttgcctGGAGaacaaccATGaac	59.1	88	9.8	-	-
ORF43	<i>hyp</i>	38964	39224	atAAGGAcgaggaaccgctATGgac	65.9	86	9.3	-	-
ORF44	<i>hyp</i>	39229	39729	cgaaagcAGGAGataaccATGgaa	60.2	166	17.7	-	-
ORF45	<i>hyp</i>	39804	40184	ccatcaccGGAGttcgcaaaATGaaa	63.5	126	13.1	-	-
ORF46	<i>hyp</i>	40195	40479	acagggcgtAAGGAcgtgactATGgac	60.6	94	10.3	<i>X. fastidiosa</i> (23%)	Q9PBS2
ORF47	<i>hyp</i>	40476	40688	acaaacaaGAGGaaagcgtcATGaaa	60.5	70	7.5	-	-
ORF48	<i>hyp</i>	40754	40903	gacaaacagagagaccctcATGtcc	56.5	49	5.6	-	-
ORF49	<i>hyp</i>	40915	41193	aagtcataAGGAcgacaaatcATGaaa	60.1	92	9.5	-	-
ORF50	<i>hyp</i>	41277	41771	gggcttttGAGGttaaaggATGaaa	57.3	164	18.2	<i>Salmonella typhi</i> R27 (22%)	Q9L5T1
ORF51	<i>hyp</i>	41768	42103	attcggcAGGAGcgtgccaATGgac	56.8	111	13.0	-	-
ORF52	<i>hyp</i>	42100	42381	cttcaAAGGcgatgagcaATGaac	59.5	93	10.1	-	-
ORF53 c	<i>hyp</i>	43435	42779	acgctaacgggtgctttgaaATGaat	64.1	218	23.9	DNA resolvase <i>E. coli</i> RP4 (72%)	P22996*
ORF54 c	<i>merR</i>	44230	43796	catgtaAGGAGtcaagcgATGgaa	61.1	144	15.6	regulatory protein <i>Pseudomonas</i> sp. K-62 pMR26 (100%) / <i>Pseudomonas</i> sp. Tn5058	P77071 / CAC14703
ORF55	<i>merT</i>	44302	44652	aaattcgaAAGGAcagcgcATGtct	62.6	116	12.5	mercury transport protein <i>Serratia marcescens</i> pDU1358 (96%)	P13112*
ORF56	<i>merP</i>	44668	44943	attaatcacAGGAGttcaacATGaaa	60.1	91	9.5	mercury transport protein <i>Ralstonia</i> sp. pMER610 (97%)	P94186*
ORF57	<i>merG</i>	44960	45598	gtaaatctaccCGGAaagcATGatg	62.3	212	23.5	organomercuric resistance protein <i>Pseudomonas</i> sp. K-62 pMR26 (48%)	O07302
ORF58	<i>merC</i>	45607	46029	gtaaagcagtgagcagacATGggc	62.4	140	14.9	transport protein <i>E. coli</i> K12 R100 (83%)	Q9WT16
ORF59	<i>merA</i>	46068	47753	acaacagagAAGGAcacaacATGacc	63.6	561	58.7	mercuric reductase <i>Acinetobacter calcoaceticus</i> pKLH2 (91%)	Q52109*
ORF60	<i>merB</i>	47768	48406	ggatgaAAGGAGatgaaccATGgag	56.6	212	23.1	lyase <i>S. marcescens</i> pDU1358 (97%)	P08664*
ORF61	<i>merD</i>	48422	48883	cgtagcggatgcgaccaATGtgc	65.4	153	16.6	regulatory protein <i>S. marcescens</i> pDU1358 (79%) / <i>Pseudomonas</i> sp. Tn5058	P08654* / CAC14703
ORF62	<i>merE</i>	48880	49116	cagcatgcGGAGagtgtccATGaac	64.1	78	8.5	putative transport protein <i>Pseudomonas</i> sp. Tn5058 (99%)	Q9F3W4
ORF63	<i>miM</i>	49132	49452	catgagcgttccccggcgATGgat	62.3	106	11.4	modulator protein <i>Pseudomonas</i> sp. Tn5058 (76%)	Q9F3W3
ORF64 c	<i>miR</i>	50105	49491	gtatatgtgacAGGTacaagATGctg	64.9	204	22.0	resolvase <i>Pseudomonas</i> sp. Tn5058 (97%)	Q9F3W2
ORF65 c	<i>miQ</i>	51383	50166	caattcagcgggaaactgatGTGgag	62.3	405	45.7	transpositional protein <i>Pseudomonas</i> sp. Tn5058 (98%)	Q9F3W1
ORF66 c	<i>miB</i>	52288	51380	cagatcgAGGAGtggtagccGTGgac	65.5	302	34.0	NTP binding protein <i>E. aerogenes</i> R751 Tn5090 (98%)	Q48383
ORF67 c	<i>miA</i>	53970	52291	caccaaacGAGGTgtgacATGgac	64.6	559	62.4	transposase <i>Pseudomonas</i> sp. Tn5058 (96%)	Q9F3V9
ORF68	<i>hyp</i>	54224	54556	aatcagtaacGGAGattccATGacc	60.6	110	12.7	-	-
ORF69	<i>hyp</i>	54534	55532	GGAGttgtaAGGTgccaATGact	62.1	332	37.0	putative cell filamentation protein <i>X. fastidiosa</i> (21%)	Q9PCU8



**Figure 1.** Genetic map of plasmid pSB102. The 69 ORFs identified in the nucleotide sequence of plasmid pSB102 (Table 3) are located on a circular map. ORFs are shown as arrows. The numbers of the ORFs are given as the inner circle, the names of the putative genes are given as the outer circle. Putative promoters are indicated as black triangles on the inner circle. Different colors of the arrows indicate transfer genes with mating pair formation (Mpf) and DNA processing/transfer (Dtr) functions (light and deep green, respectively), genes encoding plasmid replication and maintenance (Rep and Mai) (yellow), Tn5718 encoded genes involved in mercury resistance and transposition (red and blue, respectively) as well as genes to which no similarities to database entries were detected (gray). Long DRs are indicated as light and dark brown rectangles, respectively. The putative origin of transfer (*oriT*) is shown as a filled circle.

(<sub>13</sub>LAAC<sub>16</sub>) and a predicted signal sequence cleavage site at positions 14–15 within this motif and one predicted transmembrane helix (positions 99–105). TraR shows homology to IncP-1 $\alpha$  plasmid RP4 (Q03537) and IncP-1 $\beta$  plasmid R751 (P71188) encoded protein TrbM. pSB102 TraR contains an export signal sequence cleavage site between amino acids 22 and 23 (<sub>20</sub>AQA $\downarrow$ ED<sub>24</sub>), indicating that the TraR protein may be exported. Downstream of *trbM* a putative  $\rho$ -independent transcription terminator is located (positions 13660–13685).

*traB*. In contrast to the *virB* gene cluster of *B.suis*, the 11 *virB* homologous transfer genes of pSB102 are intermixed with *virB* unrelated genes (Fig. 2). TraB shows similarity to type I and type III topoisomerases of various organisms, such as plasmid pXF51 encoded putative TopA (Table 3), TopA of *E.coli* K12 (P06612\*), VC1730 of *Vibrio cholerae*

(Q9KRB2\*), To of *Pseudomonas aeruginosa* (AAG06399) and TopA of *Zymomonas mobilis* (Q9X3X7).

*traG*, ORF32. The *traG* gene encoding a putative entry exclusion function of pSB102 was found to be related to the *Xylella fastidiosa* plasmid pXF51 (29) encoded putative protein XFa0038 (Q9P9Q7), a hypothetical 8.5 kDa protein of IncW plasmid R388 (O50332), lipoprotein MagB05 (AAG24432) of *Actinobacillus actinomycetemcomitans* plasmid pVT745 (37) and the IncN plasmid pKM101 entry exclusion protein (Q46700) (38). The predicted pSB102 TraG protein contains a putative conserved lipoprotein modification/processing site (<sub>17</sub>LSG $\downarrow$ C<sub>20</sub>). The hypothetical ORF32 encoded protein contains four putative transmembrane domains and a putative signal peptide cleavage site (<sub>57</sub>LLA $\downarrow$ AR<sub>61</sub>) between amino acids 59 and 60. The ORF32 encoded protein may therefore function in the transmembrane transport machinery.

c, complementary DNA strand.

<sup>a</sup>The putative Shine–Dalgarno (SD) sequences of plasmid pSB102 are indicated by bold capital letters. Start codons are given in capitals. Overlaps of start codons with previous stop codons are underlined.

<sup>b</sup>Identities were overall identities at the amino acid sequence level.

<sup>c</sup>Accession numbers are given in SPTREMBL format or, as indicated by \*, in SWISSPROT format.

### Putative genes for the processing of DNA for transfer and establishment of the plasmid in the recipient cell are scattered over plasmid pSB102

The Dtr genes of plasmid pSB102 (*traB*, *traN*, *traO*, *traP* and *traS*) were identified by comparison with the putative Dtr genes of plasmids pXF51 (29) and RK2/RP4 (39). They were found to be scattered over one half of plasmid pSB102 and are intermixed with Mpf genes (Figs 1 and 3). This arrangement contrasts with other conjugative bhr plasmids, such as IncP-1 or IncN, where Dtr genes are clustered in a single region (40).

*oriT*, *ORF15*, *traS*. The pSB102 encoded putative relaxase TraS is most closely related to the *X.fastidiosa* plasmid pXF51 encoded relaxase MobB (Table 3). Next nearest relatives are the *A.actinomycetemcomitans* plasmid pVT745 (AAG24403) encoded relaxase, TaxC of IncX plasmid R6K (P17232) and *Agrobacterium* encoded relaxase VirD2 (P06668\*), which are all grouped into the IncP-1-type family of DNA relaxases. The pSB102 TraS protein possesses three conserved motifs of IncP-1-type relaxases (41). Upstream of the relaxase gene *traS* pSB102 contains a conserved *oriT* *nic* site (<sub>11424</sub>TATCCTG↓C<sub>11417</sub>) in the complementary DNA strand, identical to the RP4 and the *A.tumefaciens* pTiC58 *oriT* core sequences (40). Between pSB102 *oriT* and *traS* is located putative ORF15, which codes for a protein that shows similarity to the putative MobA protein of *X.fastidiosa* plasmid pXF51 (Table 3). Interestingly, *mobA* is preceded by the same *oriT* core sequence <sub>39556</sub>TATCCTG↓C<sub>39563</sub> (AE003851) and followed by the relaxase gene *mobB*.

*traN*. The pSB102 TraN protein contains two conserved motifs of the TraG family of coupling proteins (42), which are responsible for recruiting the relaxosome DNA-protein complex and coupling it with the membrane-located Mpf functions (40). The first motif is a potential NTP-binding Walker motif A (<sub>199</sub>GNPLHGKT<sub>206</sub>), while the second motif includes a potential NTP-binding Walker motif B (<sub>484</sub>LMLDDE<sub>489</sub>).

*traO*, *traP*. In some conjugation systems, the establishment of transferred DNA in the recipient cell is aided by plasmid-encoded enzymes, which are transferred from the donor to the recipient cell. Classic examples are plasmid DNA primases, such as the Sog polypeptide of plasmid Collb-P9 (43). Plasmid pSB102 TraO and TraP proteins show similarities to proteins of the primase gene region of IncP-1 plasmids (Fig. 3). Putative TraP protein of pSB102 is most closely related to hypothetical protein XFa0017 of *X.fastidiosa* plasmid pXF51 (Table 3). Both proteins display similarity to the C-terminal part of plasmid-encoded primases, such as PriL (Q9X6J9) of IncM plasmid pACM1 (44), but not to the N-terminal part containing the common primase sequence motif EGYATA (45).

### The putative replication gene of plasmid pSB102 is related to the replication gene of the broad host range plasmid pSa

*repA*. The pSB102 encoded RepA protein shows highest similarity to RepA of IncW plasmid pSa (Table 3). The pSB102 RepA protein is unusually large (484 amino acids), compared to the pSa RepA protein (333 amino acids). An alignment of these two sequences indicated an addition at the N-terminus of the pSB102 encoded RepA. The C-terminal

Table 4. Putative promoters identified in the pSB102 sequence

	Position <sup>a</sup>	Sequence <sup>b</sup>	Direction
<i>ssb</i>	7853 7893	tg <b>ttgtgct</b> ttttttttccgggt <b>ttatactg</b> gctgt	→
ORF15	11410 11448	gtctat <b>ggcagg</b> atagagctaacgccc <b>gtaaagt</b> gtatta	→
ORF17	13136 13175	taact <b>ttgggt</b> atatacagccaa <b>ggtatata</b> tttgggt	→
<i>traQ</i>	14934 14892	cgact <b>ttgatt</b> gcgctccgcttccaagatatataatattggc	←
ORF22	18560 18520	cg <b>ttcttgaca</b> aacgctgagccaaacagata <b>aatctt</b> ggc	←
<i>traN</i>	21419 21378	tg <b>gtgggtgaca</b> aacgagcagctgc <b>ctcgaatct</b> gctg	←
<i>traI</i>	26161 26119	tttt <b>ttgctc</b> acgattacaaatagg <b>gtaatt</b> ggtcgt	←
ORF39	36107 36068	gt <b>ttttggtag</b> tataatagg <b>ctttcaacat</b> gaccga	←
ORF40	38362 38322	gg <b>ttttcgaa</b> acgcaaacgca <b>caacaaat</b> aggttaa	←
ORF41	38341 38381	gt <b>ttttgctg</b> ttcgaaacaaatag <b>gtatactt</b> ggtt	→
ORF53	43672 43633	cccct <b>gtggca</b> agatggccaa <b>gttaggtata</b> cccaaat	←
<i>merR</i>	44295 44257	gtc <b>cttgcga</b> attgaa <b>ttgatcgta</b> acctacttc	←
<i>merT</i>	44231 44272	acc <b>gcttgact</b> cgatcatgag <b>tacggaagta</b> aggttacgct	→
<i>mir</i>	50174 50135	aa <b>atttgacgt</b> gacagctcc <b>gatgcaaat</b> gtcaca	←
ORF68	54142 54182	g <b>taaatgacc</b> atgta <b>gttcattgcag</b> tacaatgacatt	→

<sup>a</sup>The numbers indicate the position of the first and the last nucleotide in the pSB102 sequence, respectively.

<sup>b</sup>Putative -10 and -35 promoter sequences, predicted using the Neural Network Promoter Prediction program, are printed in bold.

302 amino acids of pSB102 RepA show 35% identity to RepA of pSa. The *oriV* of IncW plasmid pSa contains six 17 bp direct repeats, termed iterons (46). Plasmid pSB102 lacks iterons, in contrast to other plasmids encoding IncW-related RepA proteins.

*ORF2*, *ORF3*, *ORF68*, *ORF69*. Hypothetical ORF2 and ORF3 are located 13 bp downstream of the pSB102 *repA* gene. ORF2 overlaps the start of ORF3 by 8 bp (ATGCCTAA) (Table 3). The putative proteins encoded by ORF2 and ORF3 do not display any significant similarity to database entries. Hypothetical ORF68 and ORF69, preceded by putative promoter  $P_{ORF68}$ , are located upstream of the pSB102 *repA* gene.

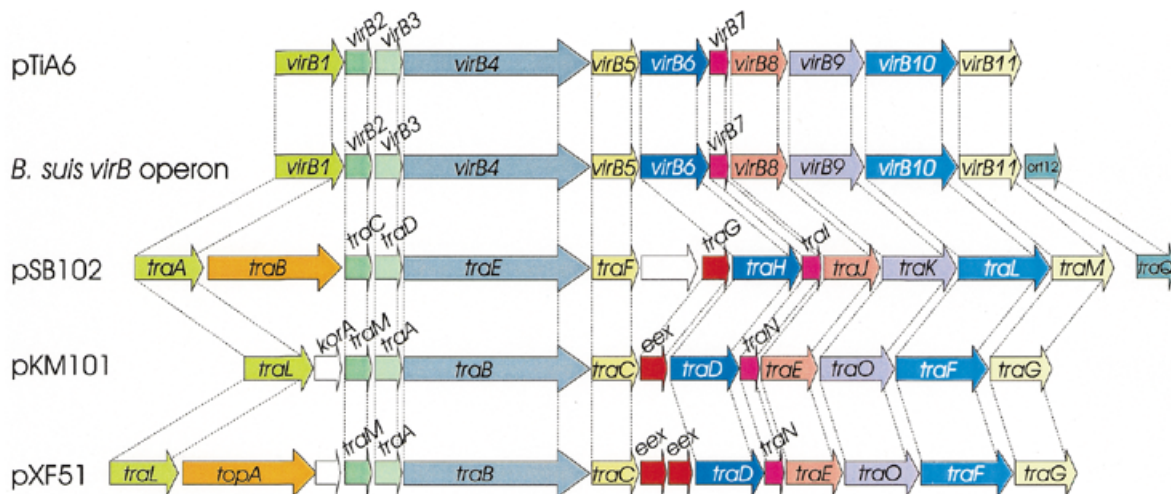
### The putative maintenance region of plasmid pSB102 shows similarities to the central control region of IncP-1 plasmids

Putative pSB102 Mai genes are packed close together and are preceded upstream by putative promoter  $P_{ssb}$  (Table 4). ORF11, ORF12 and ORF13 are arranged in the same order in pSB102 as the related genes *korA*, *incC* and *korB* in the central control region of IncP-1 $\alpha$  plasmids RK2 and RP4 (Fig. 4).

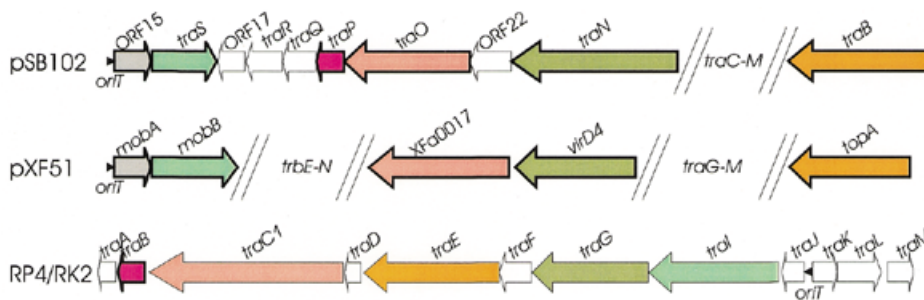
*ssb*. The first gene in the pSB102 Mai region, the *ssb* gene, encodes a single-stranded DNA-binding protein. Nearest relatives of the putative pSB102 SSB protein are the SSB proteins of RK2 (Q02327) and R751 (Q56467). Plasmid-encoded SSB proteins presumably reduce SSB starvation in cells receiving single-stranded DNA during conjugation (40).

*ORF11*, *ORF12*, *ORF13*. The ORF11 encoded protein shows weak similarity to the KorA protein of *Pseudomonas putida*





**Figure 2.** Alignment of various gene clusters encoding type IV secretion systems. The *VirB* gene clusters of *A.tumefaciens* plasmid pTiA6, of *B.suislabortus* chromosomal locus *virB* and the Mpf genes of plasmid pSB102, of the IncN plasmid pKM101 and of the *X.fastidiosa* plasmid pXF51 were aligned. Coding regions are shown as arrows. Genes encoding similar products are displayed in the same color. GenBank accession numbers of the respective nucleotide sequences are as follows: *A.tumefaciens* pTiA6, J03216; *B.suis*, AF141604; *X.fastidiosa* plasmid pXF51, AE003851; IncN plasmid pKM101, U09868.



**Figure 3.** Alignment of the *oriT* and the Dtr gene region of plasmid pSB102, the *X.fastidiosa* plasmid pXF51 and IncP-1 $\alpha$  plasmid RK2/ RP4. The Dtr genes are shown as arrows. Genes encoding similar products are displayed in the same color. ORFs of unknown function or genes without a similar product in the pSB102 Dtr gene region are shown as white arrows. Genes displaying highest identities of their deduced amino acid sequences are indicated by bold lines. GenBank accession numbers of the respective nucleotide sequences are as follows: *X.fastidiosa* plasmid pXF51, AE003851; IncP-1 $\alpha$  plasmid RK2/ RP4, L27758.

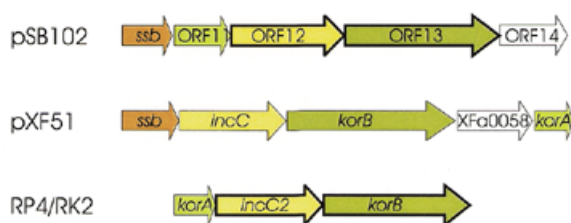
IncP-9 plasmid pM3, whereas the ORF12 encoded protein is most closely related to KorB of IncP-1 $\alpha$  plasmid RK2 (Table 3). The ORF13 encoded protein carries three conserved ATP-binding motifs, residues <sup>10</sup>KGGV GKSA<sub>17</sub>, <sup>29</sup>LRNKRV LVIDF<sub>39</sub> and <sup>115</sup>FDFCIIDTNP<sub>124</sub>, related to the respective motifs of short IncC proteins of RK2/ RP4 and R751. Both plasmids encode two in-frame IncC products which differ in their length. The short IncC protein of IncP-1 plasmids was shown to support partitioning of plasmids (47).

**ORF53.** Plasmid pSB102 ORF53 encodes another plasmid-stabilizing protein, a DNA resolvase, which may be involved in multimer resolution. The pSB102 ORF53 encoded protein shows 72% identity to ParA of RP4 (Table 3), which is part of the *parABCDE* multimer resolution system. Plasmid pSB102 specifies a distinct *res* site to RP4, as the deduced consensus sequence of the RP4 *res* site (48) was not found upstream of the pSB102 *parA* gene. A mercury resistance encoding transposon grouping to the Tn5053/ Tn402 family, whose members

are known as *res* site hunters (49), is located 265 bp upstream of ORF53.

**The mercury resistance transposon Tn5718 belongs to the Tn5053 family of transposons**

Plasmid pSB102 carries a mercury resistance transposon, designated Tn5718, which is 10 414 bp in size. It is delimited by 25 bp inverted repeats (IRs) and flanked by 5 bp direct repeats (DRs). Tn5718 contains 14 putative ORFs, nine of which were identified as *mer* genes and five of these genes, named *tmiA*, *tmiB*, *tmiQ*, *tmiR* and *tmiM* (Fig. 1), are putatively involved in Tn5718 transposition. The 25 bp IRs of Tn5718 show significant similarity to integron repeats (50), which are also found as IRs at the ends of mercury resistance transposon Tn5053 (51) and integron-carrying transposon Tn5090/ Tn402 (52). Transposons Tn5053 and Tn5090 have been shown to display an unusual strict insertion preference for the non-transcribed spacer of the *par* locus of IncP-1 plasmid RP1 (49). A 38 nt Tn21-like IR element is fused to *merR* in the same way as the *mer*-proximal IR in Tn501 and Tn21. The fusion of



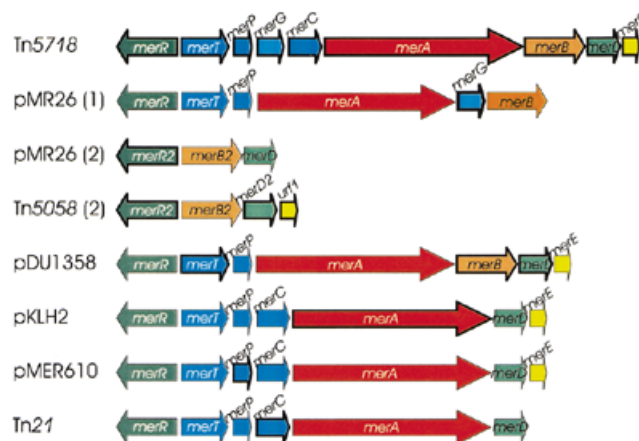
**Figure 4.** Alignment of genes in the maintenance (Mai) region of plasmids pSB102, pXF51 and RK2/TP4. Putative Mai genes are shown as arrows. Genes encoding similar products are displayed in the same color. ORFs of unknown function are shown as white arrows. Genes displaying highest identities of their deduced amino acid sequences are indicated by bold lines. GenBank accession numbers of the respective nucleotide sequences are as follows: *X.fastidiosa* plasmid pXF51, AE003851; IncP-1 $\alpha$  plasmid RK2/TP4, L27758.

a Tn21-like relic IR was reported for other mercury resistance operons (51), such as Tn5053, Tn5041, pKLH2 and pMR26 (53).

The Tn5718 mercury resistance gene cluster contains many of the known *mer* genes identified to date. Compared to the arrangement of genes in representative *mer* operons, the structure of the Tn5718 *mer* genes is one of the most complex reported so far. Figure 5 shows an alignment of the *mer* operons of *Pseudomonas* sp. K62 plasmid pMR26, *Pseudomonas* sp. ED23-33 transposon Tn5058 (GenBank accession no. Y17897), *Serratia marcescens* plasmid pDU1358, *Acinetobacter calcoaceticus* plasmid pKLH2, *Ralstonia* sp. plasmid pMER610 and *Shigella flexneri* plasmid R100 transposon Tn21, which are closely related to individually encoded Tn5718 *mer* genes.

***merR*.** The deduced protein encoded by the *merR* gene is 100% identical to MerR2 of the organomercurial resistance operon 2 from plasmid pMR26 and *Pseudomonas* sp. ED23-33 Tn5058 (Table 3). The *merR* gene and the *merTPGCABDE* genes are transcribed divergently from a compact promoter/operator region, in which their potential -10 RNA polymerase recognition hexamers overlap by 4 bp ( $P_{merT}$  <sup>44261</sup>TAAGGT<sub>44266</sub> and  $P_{merR}$  <sup>44268c</sup>TAACCT<sub>44263c</sub>).

***merT*, *merP*, *merC*, *merG*.** Peculiar to Tn5718, the gene *merG*, which is supposed to reduce cellular permeability to phenylmercury (54), is inserted between *merP* and *merC*. The MerT and MerC proteins are integral membrane proteins (55). Their postulated function is the transport of Hg<sup>2+</sup> across the cytoplasmic membrane from the periplasmic Hg<sup>2+</sup>-binding protein MerP to cytoplasmic mercuric reductase MerA. MerP of Tn5718 contains a consensus heavy metal-binding motif <sup>30</sup>GMXCXXC<sub>36</sub>, which has been correlated with the specific binding of Hg<sup>2+</sup> (56). *merT*, *merP* and *merC* genes are frequently found in various *mer* operons related to Tn21, whereas the *merG* gene is only found in the broad spectrum *mer* operon of plasmid pMR26 of *Pseudomonas* strain sp. K-62 (53). The deduced Tn5718 MerG protein carries a signal peptide cleavage site (<sub>25</sub>ALA $\downarrow$ YD<sub>29</sub>), like MerG from pMR26. Deletion of *merG* in pMR26 had no effect on inorganic mercury resistance, but rendered the bacterium more sensitive to organic mercury (54).



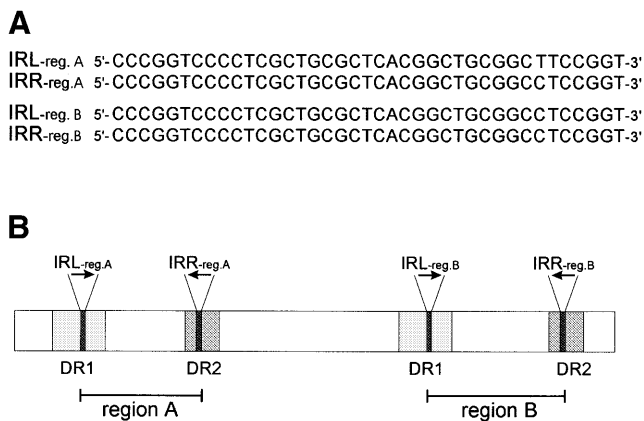
**Figure 5.** Alignment of various *mer* operons mediating resistance to inorganic mercury and organomercurials located on plasmids and transposons. Genes displaying highest identities of their deduced amino acid sequences are indicated by bold arrows. Regulatory genes are shown in green, transfer genes in blue, enzyme genes in red and genes of unknown function in yellow. GenBank accession numbers of the respective nucleotide sequences are as follows: *Pseudomonas* sp. K62 pMR26 *mer* operon 1, D83080; pMR26 *mer* operon 2, AB013925; *Pseudomonas* sp. ED23-33 *mer* operon 2, Y17897; *Serratia marcescens* plasmid pDU1358, M24940 and M15049; *A.calcoaceticus* plasmid pKLH2, AF213017; *Ralstonia* sp. plasmid pMER610, Y08993; Tn21, AF071413.

***merA*, *merB*.** MerA and MerB are the major two enzymes involved in mercury detoxification. The Tn5718 *merA* gene encodes a cytoplasmic redox enzyme of 561 amino acids belonging to the class I pyridine nucleotide-disulfide oxidoreductases. The gene *merB* is located 14 bp downstream of *merA* in Tn5718. The *merB* encoded enzyme, organomercurial lyase, cleaves the covalent C-Hg bond of certain organomercurials.

***merD*, *merE*.** MerD, which is co-transcribed with the *mer* structural genes, was described as a second regulatory protein. In pDU1358 MerD down-regulates expression of the *mer* operon by specifically binding to the *mer* promoter/operator sequence (57). The function of the most promoter-distal gene, *merE*, which is frequently found in other *mer* operons, is still unknown. Tn5718 encoded *merE* overlaps the 3'-end of *merD* by 4 bp at a 5'-ATGA-3' motif (Table 3), indicating translational coupling as a regulatory mechanism. The putative Tn5718 MerE protein contains a characteristic cysteine pair (Cys28 and Cys30) and adjacent residues (LTCPCHL) which are conserved in all MerE polypeptides, therefore MerE may play a role in mercury transport (58).

The transposition module of Tn5718 contains five putative transposition genes, designated *tniA*, *tniB*, *tniQ*, *tniR* and *tniM*. With the exception of *tniB*, the deduced amino acid sequences of the four remaining transposition genes show highest similarity to TniA, TniQ, TniR and Urf2 of *Pseudomonas* sp. ED23-33 mercury resistance transposon Tn5058 (Table 3).

***tniA*, *tniB*, *tniQ*.** The Tn5718 encoded TniA protein contains the D,D(35)E motif, which is characteristic of transposases of members of the IS3/retropon superfamily (59). The predicted TniB protein of Tn5718 contains two sites, <sub>68</sub>GPTNNGKS<sub>75</sub> and <sub>148</sub>MLVID<sub>152</sub>, which are potentially



**Figure 6.** Long DRs, containing IRs, flank regions A and B of plasmid pSB102. (A) The nucleotide sequences of the two 39 bp IRs (IRreg.A and IRreg.B) are given in forward and reverse direction for left and right hand repeats, respectively. (B) Schematic representation of 460 and 301 bp DRs, which contain the left and right hand arms of the 39 bp IRs, respectively. The two pairs of 39 bp IRs are indicated by black arrows. The 460 bp imperfect DR (DR1) is shown as light grey rectangles, the 301 bp DR (DR2) is shown as dark grey rectangles. Region A encompasses nucleotides 3492–7317 of plasmid pSB102 and region B encompasses nucleotides 37587–43160.

involved in binding and hydrolysis of NTPs (52). The GTG start codon of the following gene *miQ* overlaps the TGA stop codon of *miB* (Table 3), suggesting that translational coupling may be involved in *miQ* expression. Although the function of TniQ in transposition is unknown, deletion mutation analysis with *miA*, *miB* and *miQ* of Tn5053 have shown that these genes were essential for transposition (60).

*miR*, *miM*. The fourth gene of Tn5718, *miR*, encodes a recombinase of the resolvase/invertase family. The potential resolvase (*res*) region of Tn5718 is located upstream of the *miR* gene in the center of a pair of 14 bp imperfect inverted repeats (IR1, bp 50113–50126; IR2, bp 50142–50129). The sequence of the Tn5718 *res* region is identical to the *res* region of *Pseudomonas* sp. ED23-33 transposon Tn5058 and *Xylella campestris* transposon Tn5053 (60). Thus, Tn5718 may transpose via a two-step replicative pathway including co-integrate formation and resolution at the *res* region. The fifth gene of the transposition module, designated *miM*, shows highest similarity to Urf2 of *Pseudomonas* sp. ED23-33 mercury resistance transposon Tn5058 (Table 3), which is closely related to modulator proteins ORF2 (Q48362) of Tn501 and TnpM (P04162\*) of Tn21. TnpM has been proposed to enhance transposition and to modulate co-integrate resolution in Tn21 (61).

### Two clusters of hypothetical ORFs of unknown function exist on plasmid pSB102

Plasmid pSB102 contains two regions, designated regions A and B, where hypothetical ORFs of unknown function are clustered. These regions are flanked by two nearly identical pairs of 39 bp IRs (Fig. 6A). The first 39 bp IR (bp 2903–2941 and 6690–6728) is imperfect (one mismatch), whereas the second 39 bp IR (bp 36998–37036 and 42533–42571) is perfectly conserved. These two 39 bp IRs are part of two different pairs of long DRs, which are 460 and 301 bp in size, respectively (Fig. 6B). The imperfect 460 bp DR (DR1)

contains 24 mismatches, while the 301 bp DR (DR2) is perfectly conserved (Fig. 6B). The function of these direct and inverted repeats remains an enigma.

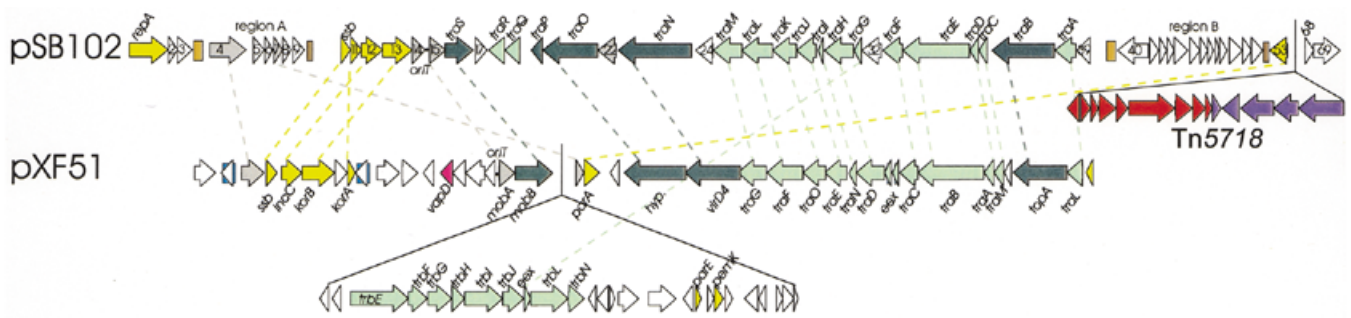
**Hypothetical ORFs in region A.** Region A contains six putative ORFs of unknown function. The first of these hypothetical ORFs, ORF4, encodes a putative protein of 452 amino acids. The C-terminal part of the ORF4 protein is related to *X.fastidiosa* plasmid pXF51 encoded hypothetical protein XFa0062 (Q9PHE6), with a size of 284 amino acids, whereas residues 78–135 of ORF4 are similar to residues 73–130 of the 297 amino acid anti-restriction protein ArdC (Q9R2K1) of IncW plasmid pSa. The downstream hypothetical ORFs, ORF5–ORF9, encode small proteins, with sizes ranging from 99 to 138 amino acids. ORF5, ORF6, ORF8 and ORF9 show no similarities to any database entries. ORF7 displays similarity to hypothetical proteins XF2067 (Table 3) and XFa0020 (Q9PHI5) encoded by *X.fastidiosa* genomic DNA and plasmid pXF51, respectively.

**Hypothetical ORFs in region B.** Region B is 5224 bp in size and contains 13 hypothetical ORFs of unknown function. The first ORF of this region, ORF40 (383 amino acids), is located on the complementary strand, whereas the remaining 12 ORFs are divergently orientated and encode proteins of rather small sizes, ranging from 49 to 166 amino acids. The deduced proteins of 11 of these ORFs, ORF40–ORF45, ORF47–ORF49, ORF51 and ORF52 did not reveal any significant similarities to database entries.

The striking clustering of genes in regions A and B encoding proteins of unknown function which display weak or no similarities to database entries rises two questions: (i) what functions are encoded by these genes; and (ii) why do the genes accumulate in these two regions of the plasmid? At present, transposon mutagenesis is under way to assess whether some of these putative proteins are involved in plasmid stability, replication or transfer.

### Plasmid pSB102 defines a new family of environmental bhr plasmids

As shown in the previous sections, plasmid pSB102 is closely related to *X.fastidiosa* plasmid pXF51 (29), whose sequence was established in the course of the *X.fastidiosa* genome sequencing project (62). With the exception of the replication region, both plasmids share structural characteristics (Fig. 7). The common features are as follows. (i) The presence of a putative topoisomerase encoding gene between Mpf genes coding for a putative lytic transglycosylase and putative propilin, respectively. This arrangement contrasts with the location of the topoisomerase encoding gene *traE* in IncP-1 $\alpha$  plasmid RP4, where *traE* is located between *traF* and *traD* in the Dtr gene region (see Fig. 3). (ii) The orientation of the relaxase gene is unique in that transcription is oriented towards the other Dtr genes. In those bhr plasmids characterized at the nucleotide sequence level to date, the relaxase genes are orientated in the same direction as the other Dtr genes (Fig. 3). (iii) The organization of the Mai region is nearly the same on both plasmids. Homologs of the IncP-1-related *korA*, *incC* and *korB* genes (Fig. 4) are also encoded by pXF51. Interestingly, this common set of survival genes is preceded by the gene *ssb* on both plasmids. This finding may be indicative of



**Figure 7.** Genetic organization of plasmid pSB102 and pXF51 encoded genes involved in plasmid transfer and maintenance. ORFs are shown as arrows. Related ORFs are connected by dashed lines. The colors of the arrows and dashed lines indicate different postulated functions of the encoded proteins: light green is reserved for mating pair formation (Mpf) functions, dark green for DNA transfer processing functions (Dtr), yellow for replication and maintenance. ORFs encoding proteins of unknown function are shown in gray, if they are related, or without color, if they are unrelated. The virulence-associated gene *vapD* of pXF51 is shown in pink. Direct repeats are indicated as rectangles with different shades of brown and blue for the different pairs of repeats in pSB102 and pXF51, respectively. GenBank accession numbers of the respective nucleotide sequences are as follows: pSB102, AJ304453; *X.fastidiosa* plasmid pXF51, AE003851.

the importance of single-stranded DNA-binding proteins in the maintenance of or establishment of plasmids in their bacterial hosts. (iv) Both plasmids carry at least one pair of unrelated DRs spanning several hundred base pairs. Whether these repeated sequences are structural components of plasmids involved in transfer, replication or maintenance or whether they confer some mobility to the ORFs they border remains an open question.

In conclusion, plasmid pSB102, together with pXF51, is representative of a new class of environmental plasmids. Surprisingly, both plasmids reside in plant-associated bacteria, either in bacterial communities inhabiting the plant rhizosphere (pSB102) or in a plant pathogenic organism (pXF51). This may indicate that both plasmids are variants of an archetypical plasmid class associated with phytosphere bacteria. Therefore, such plasmids may well contribute to the genomic plasticity of plant-associated bacteria.

## ACKNOWLEDGEMENTS

This work was supported by grants from the BMBF (BEO 0311202 and BEO 0311952) and EU BIO4 CT98-0483 ('TRAFFIC' project). Support of the EU for EU-BIOTECH Concerted Action BIO4-CT-099 'MECBAD', which provided opportunities for constructive discussions, is gratefully acknowledged.

## REFERENCES

- Osborn, A.M., Bruce, K.D., Strike, P. and Ritchie, D.A. (1997) Distribution, diversity and evolution of the bacterial mercury resistance (*mer*) operon. *FEMS Microbiol. Rev.*, **19**, 239–262.
- Drønen, A.K., Torsvik, V., Goksøyr, J. and Top, E.M. (1998) Effect of mercury addition on plasmid incidence and gene mobilizing capacity in bulk soil. *FEMS Microbiol. Ecol.*, **27**, 381–394.
- Lilley, A.K., Bailey, M.J., Day, M.J. and Fry, J.C. (1996) Diversity of mercury resistance plasmids obtained by exogenous isolation from the bacteria of sugar beet in three successive years. *FEMS Microbiol. Ecol.*, **20**, 211–227.
- Smit, E., Wolters, A. and van Elsas, J.D. (1998) Self-transmissible mercury resistance plasmids with gene-mobilizing capacity in soil bacterial populations: influence of wheat roots and mercury addition. *Appl. Environ. Microbiol.*, **64**, 1210–1219.
- Lilley, A.K. and Bailey, M.J. (1997) The acquisition of indigenous plasmids by a genetically marked pseudomonad population colonizing the sugar beet phytosphere is related to local environmental conditions. *Appl. Environ. Microbiol.*, **63**, 1577–1583.
- Lilley, A.K. and Bailey, M.J. (1997) Impact of plasmid pQBR103 acquisition and carriage on the phytosphere fitness of *Pseudomonas fluorescens* SBW25: burden and benefit. *Appl. Environ. Microbiol.*, **63**, 1584–1587.
- Schwieger, F. and Tebbe, C.C. (2000) Effect of field inoculation with *Sinorhizobium meliloti* L33 on the composition of bacterial communities in rhizospheres of a target plant (*Medicago sativa*) and a non-target plant (*Chenopodium album*)—linking of 16S rRNA gene-based single-strand conformation polymorphism community profiles to the diversity of cultivated bacteria. *Appl. Environ. Microbiol.*, **66**, 3556–3565.
- Selbitschka, W., Dresing, U., Hagen, M., Niemann, S. and Pühler, A. (1995) A biological containment system for *Rhizobium meliloti* based on the use of recombination-deficient (*recA*<sup>-</sup>) strains. *FEMS Microbiol. Ecol.*, **16**, 223–232.
- Grant, S.G.N., Jessee, J., Bloom, F.R. and Hanahan, D. (1990) Differential plasmid rescue from transgenic mouse DNAs into *Escherichia coli* methylation-restriction mutants. *Proc. Natl Acad. Sci. USA*, **87**, 4645–4649.
- Boyer, H.W. and Roulland-Dussoix, D. (1969) A complementation analysis of the restriction and modification of DNA in *Escherichia coli*. *J. Mol. Biol.*, **41**, 459–472.
- de Lorenzo, V., Eltis, L., Kessler, B. and Timmis, K.N. (1993) Analysis of *Pseudomonas* gene products using *lacI*<sup>+</sup>/*P*<sub>trp</sub>-*lac* plasmids and transposons that confer conditional phenotypes. *Gene*, **123**, 17–24.
- Dröge, M., Pühler, A. and Selbitschka, W. (2000) Phenotypic and molecular characterization of conjugative antibiotic resistance plasmids isolated from bacterial communities of activated sludge. *Mol. Gen. Genet.*, **263**, 471–482.
- Horowicz, D.I. and Burke, J.F. (1981) Rapid and efficient cosmid cloning. *Nucleic Acids Res.*, **9**, 2989–2998.
- Spitzbarth, M., Pühler, A. and Heumann, W. (1979) Characterization of plasmids isolated from *Rhizobium meliloti*. *Arch. Microbiol.*, **121**, 1–7.
- Sambrook, J., Fritsch, E.F. and Maniatis, T. (1989) *Molecular Cloning: A Laboratory Manual*, 2nd Edn. Cold Spring Harbor Laboratory Press, Cold Spring Harbor, NY.
- Sanger, F., Nicklen, S. and Coulson, A.R. (1977) DNA sequencing with chain-terminating inhibitors. *Proc. Natl Acad. Sci. USA*, **74**, 5463–5467.
- Staden, R., Beal, K.F. and Bonfield, J.K. (2000) The Staden package, 1998. *Methods Mol. Biol.*, **132**, 215–230.
- Delcher, A.L., Harmon, D., Kasif, S., White, O. and Salzberg, S.L. (1999). Improved microbial gene identification with GLIMMER. *Nucleic Acids Res.*, **27**, 4636–4641.
- Altschul, S.F., Madden, T.L., Schäffer, A.A., Zhang, J., Zhang, Z., Miller, W. and Lipman, D.J. (1997) Gapped BLAST and PSI-BLAST: a new generation of protein database search programs. *Nucleic Acids Res.*, **25**, 3389–3402.
- Reese, M.G., Harris, N.L. and Eeckman, F.H. (1996) Large scale sequencing specific neural networks for promoter and splice site recognition. In Hunter, L. and Klein, T.E. (eds), *Biocomputing*:

- Proceedings of the 1996 Pacific Symposium*. World Scientific Publishing Co, Singapore.
21. Kurtz, S. and Schleiermacher, C. (1999) REPuter: fast computation of maximal repeats in complete genomes. *Bioinformatics*, **15**, 426–427.
  22. Cserző, M., Wallin, E., Simon, I., von Heijne, G. and Elofsson, A. (1997) Prediction of transmembrane alpha-helices in prokaryotic membrane proteins: the dense alignment surface method. *Protein Eng.*, **10**, 673–676.
  23. Myers, E.W. and Miller, W. (1988) Optimal alignments in linear space. *Comput. Appl. Biosci.*, **4**, 11–17.
  24. Nielsen, H., Engelbrecht, J., Brunak, S. and von Heijne, G. (1997) Identification of prokaryotic and eukaryotic signal peptides and prediction of their cleavage sites. *Protein Eng.*, **10**, 1–6.
  25. Llanes, C., Gabant, P., Couturier, M., Bayer, L. and Plesiat, P. (1996) Molecular analysis of the replication elements of the broad-host-range RepA/C replicon. *Plasmid*, **36**, 26–35.
  26. Götz, A., Pukall, R., Smit, E., Tietze, E., Prager, R., Tschäpe, H., van Elsas, J.D. and Smalla, K. (1996) Detection and characterization of broad-host-range plasmids in environmental bacteria by PCR. *Appl. Environ. Microbiol.*, **62**, 2621–2628.
  27. O'Callaghan, D., Cazeveille, C., Allardet-Servent, A., Boschiroli, M.L., Bourg, G., Foulongne, V., Frutos, P., Kulakov, Y. and Ramuz, M. (1999) A homologue of the *Agrobacterium tumefaciens* VirB and *Bordetella pertussis* Ptl type IV secretion systems is essential for intracellular survival of *Brucella suis*. *Mol. Microbiol.*, **33**, 1210–1220.
  28. Sieira, R., Comerci, D.J., Sánchez, D.O. and Ugalde, R.A. (2000) A homologue of an operon required for DNA transfer in *Agrobacterium* is required in *Brucella abortus* for virulence and intracellular multiplication. *J. Bacteriol.*, **182**, 4849–4855.
  29. Marques, M.V., da Silva, A.M. and Gomes, S.L. (2001) Genetic organization of plasmid pXF51 from the plant pathogen *Xylella fastidiosa*. *Plasmid*, **45**, 184–199.
  30. Mushegian, A.R., Fullner, K.J., Koonin, E.V. and Nester, E.W. (1996) A family of lysozyme-like virulence factors in bacterial pathogens of plants and animals. *Proc. Natl Acad. Sci. USA*, **93**, 7321–7326.
  31. Eisenbrandt, R., Kalkum, M., Lurz, R. and Lanka, E. (2000) Maturation of IncP pilin precursors resembles the catalytic dyad-like mechanism of leader peptidases. *J. Bacteriol.*, **182**, 6751–6761.
  32. Walker, J.E., Saraste, M., Runswick, M.J. and Gay, N.J. (1982) Distantly related sequences in the  $\alpha$ - and  $\beta$ -subunits of ATP synthase, myosin, kinases and other ATP-requiring enzymes and a common nucleotide binding fold. *EMBO J.*, **1**, 945–951.
  33. Dang, T.A., Zhou, X.R., Graf, B. and Christie, P.J. (1999) Dimerization of the *Agrobacterium tumefaciens* VirB4 ATPase and the effect of ATP-binding cassette mutations on the assembly and function of the T-DNA transporter. *Mol. Microbiol.*, **32**, 1239–1253.
  34. Baron, C., Thorstenson, Y.R. and Zambryski, P.C. (1997) The lipoprotein VirB7 interacts with VirB9 in the membranes of *Agrobacterium tumefaciens*. *J. Bacteriol.*, **179**, 1211–1218.
  35. Krause, S., Bárcena, M., Pansegrau, W., Lurz, R., Carazo, J.M. and Lanka, E. (2000) Sequence-related protein export NTPases encoded by the conjugative transfer region of RP4 and by the *cag* pathogenicity island of *Helicobacter pylori* share similar hexameric ring structures. *Proc. Natl Acad. Sci. USA*, **97**, 3067–3072.
  36. Planet, P.J., Kachlany, S.C., DeSalle, R. and Figurski, D. (2000) Phylogeny of genes for secretion of the widespread *tadA* subfamily and development of a diagnostic key for gene classification. *Proc. Natl Acad. Sci. USA*, **98**, 2503–2508.
  37. Galli, D.M., Chen, J., Novak, K.F. and Leblanc, D.J. (2001) Nucleotide sequence and analysis of conjugative plasmid pVT745. *J. Bacteriol.*, **183**, 1585–1594.
  38. Pohlmann, R.F., Genetti, H.D. and Winans, S.C. (1994) Entry exclusion of IncN plasmid pKM101 is mediated by a single hydrophilic protein containing a lipid attachment motif. *Plasmid*, **31**, 158–165.
  39. Pansegrau, W., Lanka, E., Barth, P.T., Figurski, D.H., Guiney, D.G., Haas, D., Helinski, D.R., Schwab, H., Stanisich, V.A. and Thomas, C.M. (1994) Complete nucleotide sequence of Birmingham IncP $\alpha$  plasmids. Compilation and comparative analysis. *J. Mol. Biol.*, **239**, 623–663.
  40. Zechner, E.L., de la Cruz, F., Eisenbrandt, R., Grahn, A.M., Koraimann, G., Lanka, E., Muth, G., Pansegrau, W., Thomas, C.M., Wilkins, B.M. and Zatyka, M. (2000) Conjugative-DNA transfer processes. In Thomas, C.M. (ed.), *The Horizontal Gene Pool - Bacterial Plasmids and Gene Spread*. Harwood Academic, Amsterdam, The Netherlands, pp. 87–174.
  41. Pansegrau, W., Schröder, W. and Lanka, E. (1994) Concerted action of three distinct domains in the DNA cleaving-joining reaction catalyzed by relaxase (TraI) of conjugative plasmid RP4. *J. Biol. Chem.*, **269**, 2782–2789.
  42. Lessl, M., Pansegrau, W. and Lanka, E. (1992) Relationship of DNA-transfer-systems: essential transfer factors of plasmids RP4, Ti and F share common sequences. *Nucleic Acids Res.*, **20**, 6099–6100.
  43. Wilkins, B.M. and Thomas, A.T. (2000) DNA-independent transport of plasmid primase protein between bacteria by the II conjugation system. *Mol. Microbiol.*, **38**, 650–657.
  44. Preston, K.E., Radomski, C.C.A. and Venezia, R.A. (2000) Nucleotide sequence of a 7-kb fragment of pACM1 encoding an IncM DNA primase and other putative proteins associated with conjugation. *Plasmid*, **44**, 12–23.
  45. Strack, B., Lessl, M., Calendar, R. and Lanka, E. (1992) A common sequence motif, -E-G-Y-A-T-A-, identified within the primase domains of plasmid-encoded I- and P-type DNA primases and the alpha protein of the *Escherichia coli* satellite phage P4. *J. Biol. Chem.*, **267**, 13062–13072.
  46. Okumura, M.S. and Kado, C.I. (1992) The region essential for efficient autonomous replication of pSa in *Escherichia coli*. *Mol. Gen. Genet.*, **235**, 55–63.
  47. Macartney, D.P., Williams, D.R., Stafford, T. and Thomas, C.M. (1997) Divergence and conservation of the partitioning and global regulation functions in the central control region of the IncP plasmids RK2 and R751. *Microbiology*, **143**, 2167–2177.
  48. Eberl, L., Kristensen, C.S., Givskov, M., Grohmann, E., Gerlitz, M. and Schwab, H. (1994) Analysis of the multimer resolution system encoded by the *parCBA* operon of broad-host-range plasmid RP4. *Mol. Microbiol.*, **12**, 131–141.
  49. Minakhina, S., Kholodii, G., Mindlin, S., Yurieva, O. and Nikiforov, V. (1999) Tn5053 family transposons are *res* site hunters sensing plasmid *res* sites occupied by cognate resolvases. *Mol. Microbiol.*, **33**, 1059–1068.
  50. Brown, H.J., Stokes, H.W. and Hall, R.M. (1996) The integrons In0, In2 and In5 are defective transposon derivatives. *J. Bacteriol.*, **178**, 4429–4437.
  51. Kholodii, G.Ya., Yurieva, O.V., Lomovskaya, O.L., Gorlenko, Z.M., Mindlin, S.Z. and Nikiforov, V.G. (1993) Tn5053, a mercury resistance transposon with integron's ends. *J. Mol. Biol.*, **230**, 1103–1107.
  52. Rådström, P., Sköld, O., Swedberg, G., Flensburg, J., Roy, P.H. and Sundström, L. (1994) Transposon Tn5090 of plasmid R751, which carries an integron, is related to Tn7, Mu and the retroelements. *J. Bacteriol.*, **176**, 3257–3268.
  53. Kiyono, M., Omura, T., Inuzuka, M., Fujimori, H. and Pan-Hou, H. (1997) Nucleotide sequence and expression of the organomercurial-resistance determinants from a *Pseudomonas* K-62 plasmid pMR26. *Gene*, **189**, 151–157.
  54. Kiyono, M. and Pan-Hou, H. (1999) The *merG* gene product is involved in phenylmercury resistance in *Pseudomonas* strain K-62. *J. Bacteriol.*, **181**, 726–730.
  55. Misra, T.K. (1992) Bacterial resistances to inorganic mercury salts and organomercurials. *Plasmid*, **27**, 4–16.
  56. Sahlman, L., Wong, W. and Powlowski, J. (1997) A mercuric ion uptake role for the integral inner membrane protein, MerC, involved in bacterial mercuric ion resistance. *J. Biol. Chem.*, **272**, 29518–29526.
  57. Mukhopadhyay, D., Yu, H.R., Nucifora, G. and Misra, T.K. (1991) Purification and functional characterization of MerD. A coregulator of the mercury resistance operon in gram-negative bacteria. *J. Biol. Chem.*, **266**, 18538–18542.
  58. Liebert, C.A., Hall, R.M. and Summers, A.O. (1999) Transposon Tn21, flagship of the floating genome. *Microbiol. Mol. Biol. Rev.*, **63**, 507–522.
  59. Mahillon, J. and Chandler, M. (1998) Insertion sequences. *Microbiol. Mol. Biol. Rev.*, **62**, 725–774.
  60. Kholodii, G.Ya., Mindlin, S.Z., Bass, I.A., Yurieva, O.V., Minakhina, S.V. and Nikiforov, V.G. (1995) Four genes, two ends and a *res* region are involved in transposition of Tn5053: a paradigm for a novel family of transposons carrying either a *mer* operon or an integron. *Mol. Microbiol.*, **17**, 1189–1200.
  61. Hyde, D.R. and Tu, C.P.D. (1985) *tmpM*: a novel regulatory gene that enhances Tn21 transposition and suppresses cointegrate resolution. *Cell*, **42**, 629–638.
  62. Simpson, A.J., Reinach, F.C., Arruda, P., Abreu, F.A., Acencio, M., Alvarenga, R., Alves, L.M., Araya, J.E., Baia, G.S., Baptista, C.S. et al. (2000) The genome sequence of the plant pathogen *Xylella fastidiosa*. *Nature*, **406**, 151–157.