

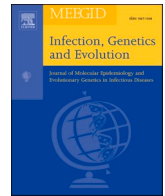


Since January 2020 Elsevier has created a COVID-19 resource centre with free information in English and Mandarin on the novel coronavirus COVID-19. The COVID-19 resource centre is hosted on Elsevier Connect, the company's public news and information website.

Elsevier hereby grants permission to make all its COVID-19-related research that is available on the COVID-19 resource centre - including this research content - immediately available in PubMed Central and other publicly funded repositories, such as the WHO COVID database with rights for unrestricted research re-use and analyses in any form or by any means with acknowledgement of the original source. These permissions are granted for free by Elsevier for as long as the COVID-19 resource centre remains active.

Contents lists available at [ScienceDirect](#)

Infection, Genetics and Evolution

journal homepage: www.elsevier.com/locate/meegid

Corrigendum to “Machine learning predictive model for severe COVID-19” [Journal Title: Infection, Genetics and Evolution, volume 90, article number 104737]

Jianhong Kang^{a,*}, Ting Chen^b, Honghe Luo^a, Guipeng Du^c, Mia Jiming-Yang^d^a Department of Thoracic Surgery, First Affiliated Hospital, Sun Yat-sen University, Guangzhou, China^b Chengdu Medical College, Chengdu, China^c The Second Affiliated Hospital of Chengdu Medical College (China National Nuclear Corporation 416 Hospital), Chengdu, China^d Medicine Campus Oberfranken, University of Bayreuth, Bavaria, Germany

Description of the original text: In 2019, an outbreak of very contagious pneumonia began in Wuhan, China. The disease and the virus causing the disease were named coronavirus disease 2019 (COVID-19) and severe acute respiratory syndrome coronavirus two (SARS-COV-2), respectively.

Change to: In 2019, an outbreak contagious form of pneumonia was

named coronavirus disease 2019(COVID-19), and the virus that caused it was named severe acute respiratory syndrome coronavirus two (SARS-COV-2).

The authors and the Publisher regret the error that appeared in their paper.

DOI of original article: <https://doi.org/10.1016/j.meegid.2021.104737>.

* Corresponding author.

E-mail address: kjhwdc@163.com (J. Kang).

<https://doi.org/10.1016/j.meegid.2022.105335>

1567-1348/© 2022 Published by Elsevier B.V.