





RESEARCH ARTICLE

Race-specific prostate cancer outcomes in a cohort of low and favorable-intermediate risk patients who underwent external beam radiation therapy from 1990 to 2017

Sean P. Stroup^{1,2} | Audry H. Robertson^{1,2,3} | Kayla C. Onofaro^{1,2,3}  |
 Michael G. Santomauro^{1,2} | Nicholas R. Rocco^{1,2} | Huai-ching Kuo^{1,3} |
 Avinash R. Chaurasia^{1,4} | Samantha Streicher^{1,3}  | Darryl Nousome^{1,3} |
 Timothy C. Brand^{1,5} | John E. Musser^{1,6} | Christopher R. Porter^{1,7} |
 Inger L. Rosner^{1,8} | Gregory T. Chesnut^{1,8} | Anthony D'Amico⁹ |
 Grace Lu-Yao^{10,11,12}  | Jennifer Cullen^{1,3,13,14} 

¹Center for Prostate Disease Research, Murtha Cancer Center Research Program, Department of Surgery, Uniformed Services University of the Health Sciences, Bethesda, Maryland, USA

²Department of Urology, Naval Medical Center San Diego, San Diego, California, USA

³The Henry M. Jackson Foundation for the Advancement of Military Medicine, Inc, Bethesda, Maryland, USA

⁴Department of Radiation Oncology, Walter Reed National Military Medical Center, Bethesda, Maryland, USA

⁵Madigan Army Medical Center, Tacoma, Washington, USA

⁶Tripler Army Medical Center, Honolulu, Hawaii, USA

⁷Virginia Mason Medical Center, Seattle, Washington, USA

⁸Urology Service, Department of Surgery, Walter Reed National Military Medical Center, Bethesda, Maryland, USA

⁹Department of Radiation Oncology, Brigham and Women's Hospital and Dana Farber Cancer Institute, Harvard Medical School, Boston, Massachusetts, USA

¹⁰Department of Medical Oncology, Sidney Kimmel Cancer Center at Jefferson, Sidney Kimmel Medical College, Philadelphia, Pennsylvania, USA

¹¹Sidney Kimmel Cancer Center at Jefferson, Philadelphia, Pennsylvania, USA

¹²Philadelphia, Jefferson College of Population Health, Pennsylvania, USA

¹³Department of Population and Quantitative Health Sciences, Case Western Reserve University, Cleveland, Ohio, USA

¹⁴Case Comprehensive Cancer Center, Cleveland, Ohio, USA

Correspondence

Sean P. Stroup, Naval Medical Center, San Diego, Urology Suite 200 Attn: CPDR, 34800 Bob Wilson Drive, San Diego, CA 92134-3200, USA.

Email: sean.p.stroup.mil@mail.mil

Present address

Huai-ching Kuo, Infectious Disease Clinical Research Program, Uniformed Services University of the Health Sciences, Bethesda, Maryland, USA

Darryl Nousome, Frederick National Laboratory for Cancer Research, National Cancer Institute, Frederick, Maryland, USA

Inger L. Rosner, INOVA, Falls Church, Virginia, USA

Grace Lu-Yao and Jennifer Cullen: Joint senior author contributions.

This is an open access article under the terms of the [Creative Commons Attribution](https://creativecommons.org/licenses/by/4.0/) License, which permits use, distribution and reproduction in any medium, provided the original work is properly cited.

© 2022 The Authors. *Cancer Medicine* published by John Wiley & Sons Ltd.

Funding information: DOD
CDMRP Health Disparities Award
#W81XWH-15-1-0381.

Abstract

Background: Previous research exploring the role of race on prostate cancer (PCa) outcomes has demonstrated greater rates of disease progression and poorer overall survival for African American (AA) compared to Caucasian American (CA) men. The current study examines self-reported race as a predictor of long-term PCa outcomes in patients with low and favorable-intermediate risk disease treated with external beam radiation therapy (EBRT).

Methods: This retrospective cohort study examined patients who were consented to enrollment in the Center for Prostate Disease Research Multicenter National Database between January 01, 1990 and December 31, 2017. Men self-reporting as AA or CA who underwent EBRT for newly diagnosed National Comprehensive Cancer Network-defined low or favorable-intermediate risk PCa were included. Dependent study outcomes included: biochemical recurrence-free survival, (ii) distant metastasis-free survival, and (iii) overall survival. Each outcome was modeled as a time-to-event endpoint using race-stratified Kaplan–Meier estimation curves and multivariable Cox proportional hazards analysis.

Results: Of 840 men included in this study, 268 (32%) were AA and 572 (68%) were CA. The frequency of biochemical recurrence, distant metastasis, and deaths from any cause was 151 (18.7%), 29 (3.5%), and 333 (39.6%), respectively. AA men had a significantly younger median age at time of EBRT and slightly higher biopsy Gleason scores. Multivariable Cox proportional hazards analyses demonstrated no racial differences in any of the study endpoints.

Conclusions: These findings reveal no racial disparity in PCa outcomes for AA compared to CA men, in a long-standing, longitudinal cohort of patients with comparable access to cancer care.

KEYWORDS

prostatic cancer, radiation therapy, survival, urological oncology

1 | INTRODUCTION

Prostate cancer (PCa) is the most commonly diagnosed cancer in men and is the second leading cause of cancer-related death in the United States (U.S.), with an estimated 191,930 new cases and 33,330 deaths projected in 2020.¹ Despite advances in treatment techniques over the last three decades, African American (AA) men are more likely to present with distant metastasis (DM) at diagnosis and have a 2.5-fold greater risk of PCa death compared to Caucasian American (CA) men.² Racial differences in cancer outcomes may result from a complex combination of biological factors, access to health-care, and patterns of cancer care including treatment quality or intensity, and/or other social determinants of health.^{3–11} Racial disparities in PCa outcomes continue to be a significant concern and a primary focus of national research.¹²

Temporal changes in approaches to external beam radiation therapy (EBRT) for PCa have made it possible for practitioners to administer more effective treatment with more favorable oncological outcomes.^{9,13–15} These changes have resulted in greater doses to the prostate and less dose delivery to nontarget organs.^{16–19} The introduction of three-dimensional conformal radiation therapy (3D CRT) in the 1990's allowed for the delivery of higher total fractionated radiation doses.¹⁴ Subsequent development of intensity-modulated radiation therapy (IMRT) led to further improvements in cancer outcomes, with further reductions in radiation exposure to nontarget organs.^{9,13} These advancements in treatment delivery have allowed for higher dosing and expanded field size, with increasingly favorable oncological outcomes.^{14–17,20} Whether such advancements over the last 25+ years have had an impact on race-specific PCa outcomes has not been adequately addressed.

The primary aim of this study was to examine whether patient self-reported race was predictive of three outcomes: (i) biochemical recurrence-free survival (BRFS), (ii) distant metastasis-free survival (DMFS), and (iii) overall survival (OS) of men with newly diagnosed low and favorable-intermediate risk PCa whose primary treatment was EBRT. A secondary study aim was to assess whether there was an independent association of EBRT technique on these three study outcomes, given the extended study period. In examining these aims, there was an ability to control for detailed clinical and follow-up information amassed over the 25+ year study period.

2 | MATERIALS AND METHODS

2.1 | Study design, population, and period

This retrospective cohort study examined patients who provided written informed consent to enroll in the Center for Prostate Disease Research (CPDR) Multicenter National Database between January 01, 1990 and December 31, 2017 at one of five participating CPDR sites, including: Walter Reed National Military Medical Center, Madigan Army Medical Center, Naval Medical Center San Diego, Tripler Army Medical Center, and Virginia Mason Medical Center. Stipends were not given for research participation. Institutional Review Board approval for this study was provided by the Uniformed Services University of the Health Sciences. This study utilized de-identified data that are not publicly available and are protected by privacy safeguards.

Study eligibility was restricted to men with newly diagnosed, biopsy-confirmed, National Comprehensive Cancer Network (NCCN)-defined low and favorable-intermediate risk PCa,²¹ treated with EBRT within 12 months of PCa diagnosis. Patients were also excluded if they had less than 1-year of follow-up, M+ or N+ disease at diagnosis. Only those who self-reported as AA or CA were included, due to limited sample sizes for other racial/ethnic groups. Finally, only patients treated with a total fractionated EBRT dose between 6500 and 8200 centi-Grays (cGy) were included.

2.2 | Demographic, clinical, and treatment-related variables

Detailed patient information that was examined in this study included: patient age at time of initiating EBRT (years), self-reported patient race (African American and Caucasian American) follow-up time after EBRT (years), time from initiating EBRT to prostate-specific antigen (PSA) nadir (years), time from initiating EBRT to biochemical recurrence (BCR)

(years), time from initiating EBRT to DM (years), EBRT dose (cGy), prostate gland volume (cubic centimeters, cc), receipt of hormone treatment (HT) (yes vs. no), EBRT technique (3D CRT, IMRT), receipt of secondary HT after EBRT (yes vs. no), PSA nadir value (<0.2 ng/ml vs. ≥0.2 ng/ml), time to nadir (TTN) (<2.3 years vs. ≥2.3 years), PSA at diagnosis (ng/ml), PSA doubling time (PSADT) (months), clinical T stage, biopsy Gleason sum, body mass index (BMI) (kg/m²), and number of major comorbidities at diagnosis, defined as presence of the following conditions at time of diagnosis: chronic obstructive pulmonary disease (COPD), cardiovascular disease (CVD), cerebral vascular accident (CVA), and/or other cancer(s).

PSA nadir was defined as the lowest PSA value following EBRT but prior to secondary HT, if applicable.²² HT was defined as any HT administered 9 months prior to, or 1 year following, EBRT initiation. Secondary HT was defined as HT administered >1 year following EBRT, and before distant metastasis. PSADT was calculated among those who experienced a BCR event using all PSA values within 2 years after failure, censored at the time of metastasis or secondary HT. PSADT was computed as the natural logarithm of 2 divided by the slope obtained from fitting a linear regression of the natural log (PSA) over time. TTN was dichotomized using a median split (in years) of time from EBRT to PSA nadir. PSADT was categorized as <10 months versus ≥10 months.²³

2.3 | Measurement of study endpoints (BRFS, DMFS, and OS)

BCR was defined according to the RTOG-ASTRO Phoenix Consensus guidelines, as a rise in PSA ≥2 ng/ml above the nadir PSA.²⁴ DM was confirmed by a positive bone biopsy, bone scan, computed tomography (CT) scan, and/or magnetic resonance imaging (MRI). OS was modeled as the time from EBRT initiation to date of death due to any cause. For all three time-dependent outcomes, time to event was calculated starting at date of EBRT initiation to the end of study period if no event was observed, censored on the date of achievement of the study endpoint, or censored at last known follow-up date. Patient vital status was confirmed for all study subjects as part of ongoing follow-up.

2.4 | Statistical analysis

Demographic, clinical, treatment, and outcome characteristics were calculated for the overall study cohort and compared across race using the Mann-Whitney test for continuous variables, and chi-squared tests for

categorical variables. Race-stratified Kaplan–Meier (KM) estimation curves were used to produce 5-, 10-, and 15-year BRFs, DMFS, and OS probability estimates for low risk and favorable-intermediate risk patients, separately. Multivariable Cox proportional hazards (PH) analyses were used to examine BRFs, DMFS, and OS as a function of race, controlling for key clinical covariates. Hazard Ratios (HR) are reported for Cox PH regression models, with corresponding 95% confidence intervals (CI) and *P*-values (summary alpha error = 0.05, two-sided testing). The threshold of *P* < 0.05 was used to define statistical significance. All statistical analyses were conducted using SAS version 9.4 (Cary, North Carolina).

3 | RESULTS

There were 840 men who met the study inclusion criteria. The median age (interquartile range, IQR) and follow-up time were 69.9 (IQR = 63.8–74.9) years, and 6.5 (IQR = 4.3–10.9) years, respectively (Table 1). A total of 572 (68%) CA and 268 (32%) AA men composed the study cohort. There were 151 (18.7%) BCR events, 29 (3.5%) DM events, and 333 (39.6%) deaths due to any cause.

Comparisons across race revealed significantly younger median age at EBRT for AA versus CA men (68.4 [IQR = 62–73] versus 70.7 [IQR = 64.7–75.5] years, respectively; *p* < 0.001). A greater proportion of AA men received IMRT (49.3% vs. 31.1%, respectively; *p* < 0.001), while a greater proportion of CA men received 3D CRT (68.9% vs. 50.7%, respectively; *p* < 0.001). Use of secondary HT was very low (8.1%) and did not differ across race.

AA men were also more likely to have a biopsy Gleason score 3 + 4 disease compared to CA men (22.8% vs. 15.4%, respectively; *p* = 0.009), and to be obese (36.4% vs. 22.1%, respectively; *p* < 0.001). CA men were more likely to have major comorbidities than AA men (44.4% vs. 25%, respectively; *p* < 0.001) due mostly to a greater prevalence of “other cancers.”

Race-stratified KM estimation curves (Figure 1A–C) revealed no statistically significant difference in 5-, 10-, and 15-year BRFs, DMFS, or OS for low-risk AA versus CA patients. Similarly, no statistically significant differences were seen in race-stratified KM estimation curves 5-, 10-, and 15-year BRFs, DMFS, or OS for favorable-intermediate risk AA versus CA patients (Figure 2A–C).

Multivariable Cox PH analysis was performed for each of the study endpoints (Table 2). Factors predictive of poorer BRFs included: greater prostate volume (≥ 48.07 cc) (HR = 4.2, 95% CI = 1.3–13.9, *p* = 0.02), PSA nadir ≥ 0.2 ng/ml (HR = 4.3, 95% CI = 1.7–10.6,

p = 0.002), and faster TTN (<2.3 years) (HR = 4.9, 95% CI = 2.3–10.5, *p* < 0.001). However, no significant difference in BRFs was observed across race. Factors that were predictive of poorer DMFS in the Cox PH model included: favorable-intermediate versus low-risk disease (HR = 4.2, 95% CI = 1.1–16.3, *p* = 0.04) and PSADT < 10 months (HR = 33.9, 95% CI = 4.1–277.5, *p* = 0.001). Again, race was not predictive of DMFS. Finally, Cox PH analysis revealed poorer OS for: increasing age (HR = 1.05, 95% CI = 1.02–1.08, *p* = 0.001), favorable-intermediate versus low-risk disease (HR = 1.6, 95% CI = 1.1–2.4, *p* = 0.016), TTN < 2.3 years vs. ≥ 2.3 years (HR = 1.7, 95% CI = 1.2–2.5, *p* = 0.004), and presence versus absence of any major comorbidity (HR = 2.1, 95% CI = 1.4–3.1, *p* < 0.001).

Due to sporadic missing data, the effective sample size in the Cox PH models decreased from *n* = 840 to *n* = 405. Therefore, a detailed comparison of descriptive characteristics was conducted to ensure comparability in distributions of key patient characteristics across the overall cohort (*n* = 840) versus the patient subset retained in the Cox PH models (*n* = 405). No differences were observed across the groups (Table 3).

Time trends in median EBRT doses for patients undergoing 3D CRT (*n* = 530) and IMRT (*n* = 310) were also examined. These trends were examined for the overall study cohort, as well as stratified into race by biopsy grade subgroups (i.e., CA/3 + 3, AA/3 + 3, CA/3 + 4, and AA/3 + 4). Though overall increases in radiation dose were observed over time, particularly between 1997 and 2004, these increases were comparable in all race by grade categories. As expected, 3D CRT was the most common mode of EBRT delivery until 2003, largely replaced by IMRT in 2004 (*data available upon request*).

For a subset of patients, underlying cause of death was examined, using data obtained from the CDC National Death Index Office among the 333 subjects who died in the study cohort. Using these data, an attempt was made to construct a prediction model for prostate cancer-specific mortality (PCSM) estimates, with race as a key independent variable. However, due to the very small number of prostate cancer-specific deaths (*n* = 20, 2.4%), and a median time from EBRT to PCSM of 10.8 years, effect estimates were unreliable and are not presented. However, a KM analysis of the 20-year cumulative risk of PCSM demonstrated no racial differences in PCSM (log-rank *P* = 0.76; *data available upon request*).

4 | DISCUSSION

This study confirmed that, in a cohort with equal health-care access, enrolled over a quarter of a century, no racial differences were noted in multiple PCa outcomes for

TABLE 1 Overall and race-stratified descriptive characteristics of study cohort

	Overall cohort <i>N</i> = 840	Caucasian American patients <i>n</i> = 572 (68%)	African American patients <i>n</i> = 268 (32%)	<i>p</i> -value
	<i>N</i> (%)	<i>N</i> (%)	<i>N</i> (%)	
Age at EBRT, (years)				<0.001
Median (IQR) ^a	69.9 (63.8, 74.9)	70.7 (64.7, 75.5)	68.4 (62, 73)	
Follow-up time after EBRT, (years)				0.13
Median (IQR)	6.5 (4.3, 10.9)	6.9 (4.4, 11.2)	5.9 (4.2, 10.3)	
Time from EBRT to PSA Nadir ^b , (years)				0.17
Median (IQR)	2.3 (1.3, 4.3)	2.2 (1.3, 4.3)	2.6 (1.4, 4.3)	
Time from EBRT to BCR ^c , (years)				0.95
Median (IQR)	5.3 (3.4, 7.8)	5.4 (3.4, 8)	5 (3.6, 7.5)	
Time from EBRT to metastasis, (years)				0.84
Median (IQR)	8.1 (3.1, 11)	8.1 (3, 11.2)	7.1 (3.1, 10.3)	
EBRT dosage (centiGrays)				
Median (IQR) for 3D CRT	7000 (6840, 7040)	7000 (6840, 7040)	7000 (6840, 7020)	0.70
Median (IQR) for IMRT	7800 (7600, 7800)	7800 (7600, 7800)	7800 (7600, 7800)	0.37
Prostate gland volume (cc)				0.80
Median (IQR)	36.5 (28.4, 48.1)	36.8 (28, 48.1)	36 (29.7, 48.2)	
Primary treatment type, <i>N</i> (%)				0.53
EBRT alone	748 (89)	512 (89.5)	236 (88.1)	
EBRT with HT ^d	92 (11)	60 (10.5)	32 (11.9)	
Primary EBRT technique, <i>N</i> (%)				<0.001
3D CRT	530 (63.1)	394 (68.9)	136 (50.7)	
IMRT	310 (36.9)	178 (31.1)	132 (49.3)	
Secondary HT ^e , <i>N</i> (%)				
Time from EBRT to secondary HT, (years) Median (IQR)	6.2 (3.8, 9.4)	6.2 (3.8, 9)	7.6 (3.6, 10.3)	0.73
PSA Nadir (ng/ml), <i>N</i> (%)				
<0.2 (undetectable)	241 (29.9)	165 (30)	76 (29.6)	0.90
≥0.2 (detectable)	566 (70.1)	385 (70)	181 (70.4)	
PSA at diagnosis (ng/ml), <i>N</i> (%)				
Median (IQR)	5.9 (4.3, 8.3)	5.8 (4.2, 8.2)	6.2 (4.5, 8.5)	0.099
PSADT ^g (months), <i>N</i> (%)				0.92
<10	52 (12.3)	36 (6.6)	16 (6.2)	
≥10	99 (6.4)	69 (12.5)	30 (11.7)	
Clinical T stage, <i>N</i> (%)				0.20
≤T2a	758 (90.2)	511 (89.3)	247 (92.2)	
T2b–T2c	82 (9.8)	61 (10.7)	21 (7.8)	
Biopsy Gleason score, <i>N</i> (%)				0.009
≤6	691 (82.3)	484 (84.6)	207 (77.2)	
3 + 4	149 (17.7)	88 (15.4)	61 (22.8)	
Obese (BMI ≥ 30.0 kg/m ²), <i>N</i> (%)				<0.001
Any major comorbidity ^f , <i>N</i> (%)	321 (38.2)	254 (44.4)	67 (25.0)	<0.001

^aIQR, interquartile range.

^bPSA nadir was defined as the lowest absolute PSA value following EBRT treatment *and* prior to secondary HT, if applicable.

^cBCR, biochemical recurrence, defined as a rise in PSA ≥2 ng/mL above the nadir PSA value.

^dHT, hormone treatment, defined as any HT within 9 months prior to *or* 1 year following EBRT treatment (start date).

^eSecondary HT was defined as HT >1 year following EBRT and before distant metastasis.

^fMajor comorbid conditions included: chronic obstructive pulmonary disease (COPD), cardiovascular disease (CVD), Cerebral Vascular Accident (CVA), and/or other cancer(s).

^gPSADT, PSA doubling time was calculated among those who experienced a BCR event (*n* = 151) using all PSA values within 2 years after BCR, censored at the time of metastasis or use of secondary HT. PSADT was then computed as the natural logarithm of 2 divided by the slope obtained from fitting a linear regression of the natural log(PSA)/time.

Bold indicates significant values of *p* < 0.05.

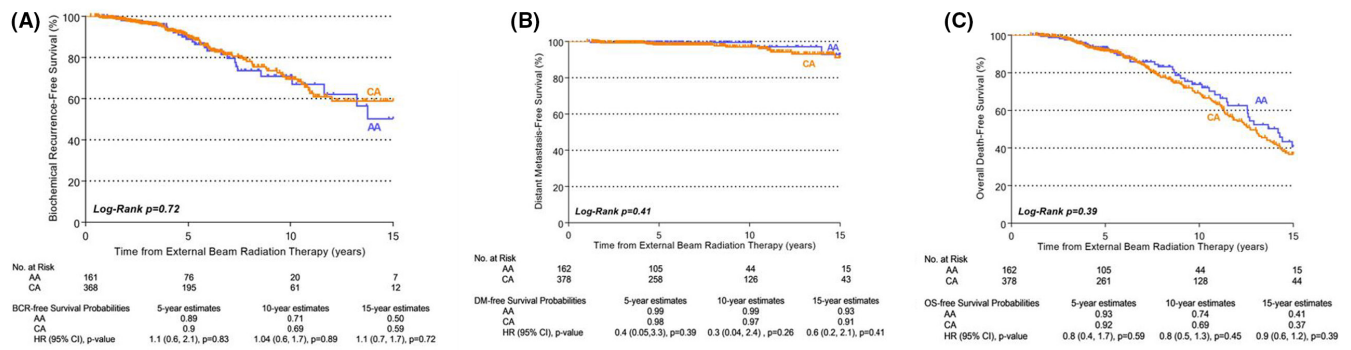


FIGURE 1 Race-stratified biochemical recurrence-free (A), distant metastasis-free (B), and overall survival (C) in low-risk patients. Study outcomes were modeled as time-to-event endpoints using race-stratified Kaplan–Meier estimation curves. Low and favorable-intermediate risk strata were defined by National Comprehensive Cancer Network criteria.²¹ AA, African American; CA, Caucasian American; BCR, biochemical recurrence; DM, distant metastasis; OS, overall survival

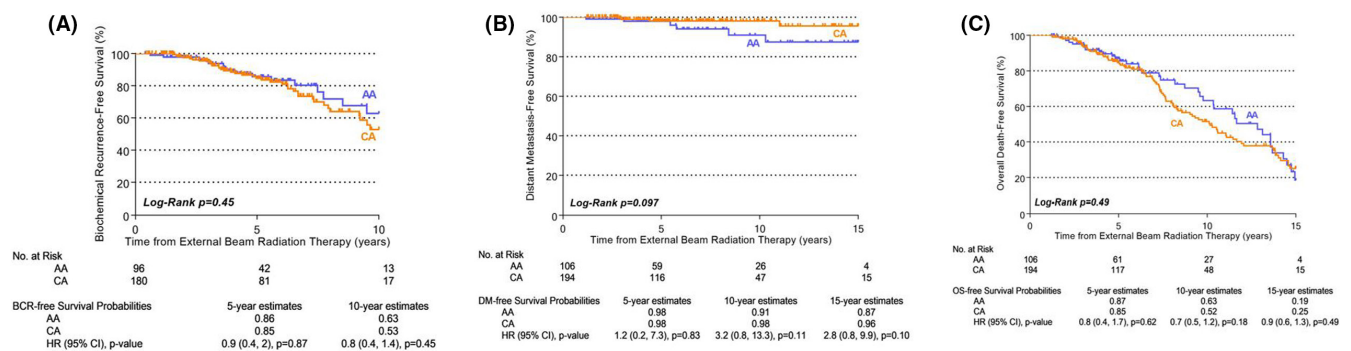


FIGURE 2 Race-stratified biochemical recurrence-free^a (A), distant metastasis-free (B), and overall survival (C) in favorable-intermediate risk patients. Study outcomes were modeled as time-to-event endpoints using race-stratified Kaplan–Meier estimation curves. Low and favorable-intermediate risk strata were defined by National Comprehensive Cancer Network criteria.²¹ AA, African American; CA, Caucasian American; BCR, biochemical recurrence; DM, distant metastasis; OS, overall survival. ^aThe 15-year estimate cannot be provided among Favorable-Intermediate due to no BCR events among AA men at this time point

patients with low and favorable-intermediate risk disease who were treated with EBRT. In following this cohort over an extended period, this study accounted for notable changes in radiation delivery over time.

In contrast to the present study, findings from the Surveillance, Epidemiology, and End Results (SEER)-Medicare populations have shown the age-adjusted PCa mortality rates to be twice as high for AA compared to CA men.²⁵ However, recent reports on the history of PCa indicate that AA men have had a significantly higher incidence of preclinical disease, greater risk of metastatic progression, lower likelihood of receiving treatment with curative intent, and higher risk of PCSM.^{26,27} Furthermore, it has been suggested that AA men have higher grade and more advanced disease at presentation. These risk factors have been associated with worse cancer control outcomes for AA men compared to CA men.^{4,7,28–30} Williams et al. evaluated over 7300 men demonstrating significant differences in PCa outcomes among non-Hispanic AA and white men, and found that AA men experienced higher PCSM than CA men.³¹

Conversely, our study supports previous work showing little or no racial differences in PCa outcomes following treatment.^{32–38} In a simulation study conducted on the National Cancer Database (NCDB) which captures roughly 60% of all PCa cases diagnosed in the US, no significant racial differences in survival (AA compared to CA men) with simulated equal access to healthcare, and better survival outcomes for AA men were noted after simulating equal treatment and tumor characteristics.³⁹ In other studies that have examined the U.S. Department of Defense tumor registry, including within the Veteran Health Administration systems, comparable PCSM outcomes were reported for AA and CA men in these equal access healthcare systems as well.^{32–37}

During this extended study period, the types and approaches to EBRT delivery evolved with unknown impact on race-specific outcomes, as well as access to care and treatment intensity.^{8–11} For example, with the introduction of IMRT, barriers to access of care arose, including geographical location and cost-inhibitive

TABLE 2 Multivariable Cox Proportional Hazards Analysis Models predicting Biochemical recurrence-free survival, Distant metastasis-free survival, and Overall survival following EBRT treatment ($n = 405^{a-c}$)

Patient characteristic	Biochemical recurrence-free survival (BRFS)		Distant metastasis-free survival (DMFS)		Overall survival (OS)	
	HR (95% CI)	<i>p</i> -value	HR (95% CI)	<i>p</i> -value	HR (95% CI)	<i>p</i> -value
Age at EBRT (years)	1.01 (0.96, 1.06)	0.84	0.98 (0.9, 1.1)	0.64	1.05 (1.02, 1.08)	0.001
Prostate volume ^b (cubic centimeters, cc)			NA	NA	NA	NA
28.4–36.4 vs. <28.4	1.8 (0.6, 5.8)	0.31				
36.5–48.06 vs. <28.4	2.5 (0.8, 7.8)	0.13				
≥48.07 vs. <28.4	4.2 (1.3, 13.9)	0.02				
Self-reported race						
African American vs. Caucasian American	1.3 (0.6, 2.7)	0.58	2.3 (0.6, 9)	0.24	1.3 (0.8, 2)	0.29
NCCN risk stratum						
Favorable-Intermediate vs. Low	1.1 (0.5, 2.3)	0.84	4.2 (1.1, 16.3)	0.04	1.6 (1.1, 2.4)	0.016
PSA Nadir (ng/ml)						
≥0.2 vs. <0.2	4.3 (1.7, 10.6)	0.002	1.6 (0.3, 8.5)	0.56	1.1 (0.7, 1.6)	0.82
Time to PSA nadir ^c (years)						
<2.3 vs. ≤2.3	4.9 (2.3, 10.5)	<0.001	0.8 (0.2, 3.8)	0.76	1.7 (1.2, 2.5)	0.004
PSADT (months)						
≥10 vs. No BCR	NA	NA	2.8 (0.6, 13.9)	0.20	NA	NA
<10 vs. No BCR			33.9 (4.1, 277.5)	0.001		
Major comorbidities						
Yes vs. No					2.1 (1.4, 3.1)	<0.001

^aExclusion of study subjects was made for the following reasons: receipt of secondary HT ($n = 68$), missing PSA nadir or missing prostate volume information ($n = 33$).

^bThe model was also adjusted for primary treatment year, primary treatment type, and primary treatment technique.

^cTime to PSA nadir was categorized using the median split for time from RT to PSA nadir (in years).

Bold indicates significant values of $p < 0.05$.

technological incorporation, resulting in more CA than AA men receiving IMRT in the years following its introduction.^{8,9} However, in this study, there were no notable differences in IMRT initiation and no significant differences in long-term outcomes between racial groups before or after the years when use of IMRT became widespread. Previous research has indicated that AA men experience longer delays to the start of treatment and less aggressive treatment plans, a finding that was not observed in this study.^{11,40–42} It has been shown that AA men are less likely to receive definitive treatment, and that health insurance coverage is associated with a reduction in racial disparity.^{43–45} This study focused on a cohort diagnosed and treated within an equal access healthcare system for which all patients had insurance coverage.

Despite our findings of comparable oncologic outcomes, AA men in this study cohort presented with higher Gleason score and were diagnosed at younger ages. Yet, following diagnosis, they experienced the same intensity

of treatment as indicated by median EBRT dosage and receipt of adjuvant and/or salvage HT, and ultimately experienced no difference in long-term outcomes compared to CA men. Similar findings were shown by Shah et al., demonstrating AA men presented at younger ages and with a higher Gleason Score, and yet such baseline differences did not translate into poorer OS, BRFS, or DMFS compared to CA men.⁴⁶ Moreover, in provocative findings from nearly 6000 patients in RTOG trials, AA men appeared to have more radiosensitive tumors and more robust immunologic responses to radiation treatment, resulting in improved outcomes, compared to CA men.⁴⁷

The current study also found several important clinicopathological factors associated with poorer BRFS, including larger prostate volume (≥48.07 cc), failing to achieve PSA nadir, and time to PSA nadir <2.3 years. None of these variables differed across race. Similar to our study, Kaminski et al. found that in men who received 3D CRT for treatment of “favorable” PCa (defined as having a PSA <10 ng/ml, Gleason score 2–6, and T1–T2a disease),

TABLE 3 Characteristics of the Overall Study Cohort ($N = 840$) compared to study subjects in Cox Proportional Hazards (PH) models ($n = 405$)

	Overall study cohort $N = 840$ N (%)	Study subjects in Cox PH models $n = 405$ N (%)
Age at RT (year)		
Median (IQR) ^a	69.9 (63.8, 74.9)	69.3 (63.6, 75.1)
Follow-up Time after EBRT, (year)		
Median (IQR)	6.5 (4.3, 10.9)	5.9 (4.1, 9.1)
Time from RT to PSA Nadir ^b (year)		
Median (IQR)	2.3 (1.3, 4.3)	2.5 (1.4, 4.3)
Time from RT to BCR, (year)		
Median (IQR)	5.3 (3.4, 7.8)	6.2 (4, 8)
Time from EBRT to Mets, (year)		
Median (IQR)	8.1 (3.1, 11)	8.4 (4.2, 11)
Dosage(cGy)		
Median (IQR) for CT based/3DCRT	7000 (6840, 7040)	7000 (6840, 7200)
Median (IQR) for IMRT	7800 (7600, 7800)	7800 (7600, 7800)
Prostate volume, (cc)		
Median (IQR)	36.5 (28.4, 48.1)	36.5 (28.2, 49.5)
Biochemical recurrence (BCR) ^c , N (%)	151 (18.7)	37 (9.1)
Distant metastasis, N (%)	29 (3.5)	11 (2.7)
Overall death, N (%)	333 (39.6)	125 (30.9)
Race		
AA	268 (32)	131 (32)
CA	572 (68)	274 (68)
Primary treatment type, N (%)		
EBRT alone	748 (89)	360 (89)
EBRT with HT ^d	92 (11)	45 (11)
Primary treatment technique, N (%)		
CT based/3D CRT	530 (63.1)	224 (55.3)
IMRT	310 (36.9)	181 (44.7)
Secondary HT ^e , N (%)		
Time from RT to secondary HT (year)		
Median (IQR)	6.2 (3.8, 9.4)	–
No	772 (91.9)	405 (100)
Yes	68 (8.1)	–
PSA nadir (ng/ml), N (%)		
Median (IQR)		
<0.2 (undetectable)	241 (29.9)	130 (32)
≥0.2 (detectable)	566 (70.1)	275 (68)

(Continues)

TABLE 3 (Continued)

	Overall study cohort $N = 840$ N (%)	Study subjects in Cox PH models $n = 405$ N (%)
Missing/Unknown	33	–
PSA at diagnosis (ng/ml), N (%)		
Median (IQR)	5.9 (4.3, 8.3)	
<4	173 (20.6)	87 (21.5)
4–10	541 (64.4)	261 (64.4)
10–20	126 (15)	57 (14.1)
PSADT ^g (months), N (%)		
No BCR	656 (81.3)	368 (90.9)
<10	52 (12.3)	29 (7.1)
≥10	99 (6.4)	8 (2)
Missing/Unknown	33	–
Clinical T stage, N (%)		
≤T2a	758 (90.2)	371 (91.6)
T2b–T2c	82 (9.8)	34 (8.4)
Biopsy Gleason score, N (%)		
≤6	691 (82.3)	324 (80)
3 + 4	149 (17.7)	81 (20)
Obesity (BMI ≥ 30.0 kg/m ²), N (%)		
No	535 (73.5)	264 (71.7)
Yes	193 (26.5)	104 (28.3)
Missing/Unknown	112	37
Major Comorbidities ^f , N (%)		
No	519 (61.8)	255 (63)
Yes	321 (38.2)	150 (37)

^aIQR, interquartile range.

^bPSA nadir was defined as the lowest absolute PSA value following EBRT treatment and prior to secondary HT, if applicable.

^cBCR = biochemical recurrence was defined as a rise in PSA ≥ 2 ng/ml above the nadir PSA value.

^dHT, hormone treatment defined as any HT within 9 months prior to or 1 year following EBRT treatment (start date).

^eSecondary HT was defined as HT > 1 year following EBRT and before, distant metastasis.

^fAny major comorbidity included: chronic obstructive pulmonary disease (COPD), cardiovascular disease (CVD), Cerebral Vascular Accident (CVA), and/or Other Cancer.

^gPSADT, PSA doubling time was calculated among those who experienced a BCR event ($n = 151$) using all PSA values within 2 years after BCR, censored at the time of metastasis or use of secondary HT. PSADT was then computed as the natural logarithm of 2 divided by the slope obtained from fitting a linear regression of the natural log(PSA)/time.

prostate volume was a significant predictor of biochemical progression ($p = 0.04$).⁴⁸ While the observation that a shorter TTN was strongly associated with poorer BRFs and OS was unexpected, this has been reported

previously.^{49,50} Explanations for this counterintuitive finding have included more aggressive disease and/or lead time bias among those with shorter TTN's, with more frequent patient follow-up in such patients, to ensure optimal outcomes.

4.1 | Limitations

Potential limitations include that this study utilized a military population, with the exception of one site, which may differ from civilian populations. However, this allowed for assessment of an equal access healthcare system enriched with a large percentage of AA men. The 27-year study period was advantageous for examining disease progression as EBRT evolved, but also posed challenges due to changes in the delivery of EBRT. To address these concerns, this study analyzed the impact of several critical treatment-related factors including median EBRT dose, EBRT type, and biopsy grade to ensure comparability across race over time. Despite the extended study period, the median follow-up time was 6.5 years, making it a challenge to examine longer-term endpoints. However, there were a robust number of BCR events and deaths (*all cause*) that were shown to be comparable across race, with detailed clinical variable adjustment. Moreover, these endpoints are challenging for any study focused on prognostication of aggressive disease for patients with low and favorable-intermediate risk PCa. Though we could not model PCSM in this study, we were able to examine DMFS, a strong correlate of PCSM, and our analysis revealed no racial differences, albeit with a small number of events. Lastly, race was assessed by patient self-report, which may not represent true genetic differences. However, a large, racially/ethnically diverse study of data from “23andMe”—a company that has compiled a global database of over 5 million customers, with roughly 80% sharing genotypic and phenotypic information for research on human ancestry and diseases⁵¹—indicate that self-report is a fairly accurate indicator of genetic origin, especially for AA and CA men.⁵² Future research should examine PCSM and DMFS in larger cohorts with underrepresented racial/ethnic groups.

5 | CONCLUSION

In contrast to many studies that support poorer PCa outcomes for AA compared to CA men, this study found no associations between race and cancer progression or overall survival among patients undergoing EBRT as primary treatment for low and favorable-intermediate risk PCa. The healthcare setting from which patients were

diagnosed and treated for over a quarter of a century is likely a key factor contributing to this absence of racial disparities. Overall, the current study suggests that, within an equal access healthcare system, racial disparities in PCa outcomes can be reduced, at least among low and favorable-intermediate risk patients treated with EBRT.

CONFLICT OF INTEREST

The authors declare no potential conflict of interest.

AUTHOR CONTRIBUTIONS

Sean P. Stroup: Conceptualization, project administration, supervision, writing—original draft, and writing—review and editing. Audry H. Robertson: Investigation, writing—original draft and writing—review and editing. Kayla C. Onofaro: Investigation, writing—original draft and writing—review and editing. Michael G. Santomauro: Conceptualization and writing—review and editing. Nicholas R. Rocco: Conceptualization, and writing—review and editing. Huai-ching Kuo: Data curation, formal analysis, methodology, software, visualization, and writing—review and editing. Avinash R. Chaurasia: Writing—review and editing. Samantha Streicher: Writing—review and editing. Darryl Nosome: Writing—review and editing. Timothy C. Brand: Project administration, supervision, and writing—review and editing. John E. Musser: Project administration, supervision, and writing—review and editing. Christopher R. Porter: Project administration, supervision, and writing—review and editing. Inger L. Rosner: Project administration, supervision, and writing—review and editing. Gregory T. Chesnut: Supervision and writing—review and editing. Anthony D'Amico: Conceptualization and writing—review and editing. Grace Lu-Yao: Writing—review and editing. Jennifer Cullen: Conceptualization, funding acquisition, methodology, project administration, supervision, writing—original draft, and writing—review and editing.

DISCLAIMERS

The contents of this publication are the sole responsibility of the authors and do not necessarily reflect the views, opinions, or policies of Uniformed Services University of the Health Sciences (USUHS), the Henry M. Jackson Foundation for the Advancement of Military Medicine, Inc., the Department of Defense (DoD) or the Departments of the Army, Navy, or Air Force. Mention of tradenames, commercial products, or organizations does not imply endorsement by the U.S. Government.

DATA AVAILABILITY STATEMENT

The data supporting the findings of this study are available from the Center for Prostate Disease Research (CPDR).

Restrictions and additional conditions may apply to the availability of these data from the Defense Health Agency (DHA).

ORCID

Kayla C. Onofaro  <https://orcid.org/0000-0003-0634-5547>

Samantha Streicher  <https://orcid.org/0000-0002-0455-2131>

Grace Lu-Yao  <https://orcid.org/0000-0002-6017-9175>

Jennifer Cullen  <https://orcid.org/0000-0001-7573-1260>

REFERENCES

- American Cancer Society. Key Statistics for Prostate Cancer. Published January 8, 2020. Accessed January 17, 2020. <https://www.cancer.org/cancer/prostate-cancer/about/key-statistics.html>
- Noone AM, Howlander N, Krapcho M, et al. *SEER Cancer Statistics Review, 1975–2015*. National Cancer Institute. Published April, 2018. Updated September 10, 2018. Accessed October 4, 2019. https://seer.cancer.gov/archive/csr/1975_2015/
- Bensen JT, Xu Z, Smith GJ, Mohler JL, Fontham ETH, Taylor JA. Genetic polymorphism and prostate cancer aggressiveness: a case-only study of 1,536 GWAS and candidate SNPs in African-Americans and European-Americans. *Prostate*. 2013;73(1):11–22. doi:10.1002/pros.22532
- Yamoah K, Johnson MH, Choeurng V, et al. Novel biomarker signature that may predict aggressive disease in African American men with prostate cancer. *J Clin Oncol*. 2015;33:2789–2796. doi:10.1200/JCO.2014.59.8912
- Kim HS, Moreira DM, Jayachandran J, et al. Prostate biopsies from black men express higher levels of aggressive disease biomarkers than prostate biopsies from white men. *Prostate Cancer Prostatic Dis*. 2011;14:262–265. doi:10.1038/pcan.2011.18
- Koochekpour S, Buckles E, Shourideh M, et al. Androgen receptor mutations and polymorphisms in African American prostate cancer. *Int J Biol Sci*. 2014;10:643–651. doi:10.7150/ijbs.8974
- Zhang H, Messing EM, Travis LB, et al. Age and racial differences among PSA-detected (AJCC stage T1cN0M0) prostate cancer in the U.S.: a population-based study of 70,345 men. *Front Oncol*. 2013;3(312):1–10 doi:10.3389/fonc.2013.00312
- Cobran EK, Chen RC, Overman R, et al. Racial differences in diffusion of intensity-modulated radiation therapy for localized prostate cancer. *Am J Mens Health*. 2016;10(5):399–407. doi:10.1177/1557988314568184
- Elliott SP, Adejoro OO, Konety BR, Jarosek SL, Dusenbery KE, Virnig BA. Intensity modulated radiation therapy replaces 3-dimensional conformal radiotherapy as prostate cancer treatment. *J Urol*. 2012;187(4):1253–1258. doi:10.1016/j.juro.2011.11.088
- Freedland SJ, Isaacs WB. Explaining racial differences in prostate cancer in the United States: sociology or biology? *Prostate*. 2005;62(3):243–252. doi:10.1002/pros.20052
- Lee DJ, Zhao Z, Huang LC, et al. Racial variation in receipt of quality radiation therapy for prostate cancer. *Cancer Causes Control*. 2018;29(10):895–899. doi:10.1007/s10552-018-1065-5
- American Psychological Association. Fact Sheet: Health Disparities. Accessed October 4, 2019. <https://www.apa.org/topics/health-disparities/fact-sheet>
- Cahlon O, Hunt M, Zelefsky MJ. Intensity-modulated radiation therapy: supportive data for prostate cancer. *Semin Radiat Oncol*. 2008;18:48–57. doi:10.1016/j.semradonc.2007.09.007
- Zelefsky MJ, Leibel SA, Gaudin PB, et al. Dose escalation with three-dimensional conformal radiation therapy affects the outcome in prostate cancer. *Int J Radiat Oncol Biol Phys*. 1998;41(3):491–500. doi:10.1016/S0360-3016(98)00091-1
- Kupelian PA, Ciezki J, Reddy CA, Klein EA, Mahadevan A. Effect of increasing radiation doses on local and distant failures in patients with localized prostate cancer. *Int J Radiat Oncol Biol Phys*. 2008;71(1):16–22. doi:10.1016/j.ijrobp.2007.09.020
- Koper PCM, Stroom JC, Van Putten WLJ, et al. Acute morbidity reduction using 3DCRT for prostate carcinoma: a randomized study. *Int J Radiat Oncol Biol Phys*. 1999;43(4):727–734. doi:10.1016/S0360-3016(98)00406-4
- Peeters STH, Heemsbergen WD, Koper PCM, et al. Dose-response in radiotherapy for localized prostate cancer: results of the Dutch multicenter randomized phase III trial comparing 68 Gy of radiotherapy with 78 Gy. *J Clin Oncol*. 2006;24(13):1990–1996. doi:10.1200/JCO.2005.05.2530
- Pollack A, Zagars GK, Starkschall G, et al. Prostate cancer radiation dose response: results of the M. D. Anderson phase III randomized trial. *Int J Radiation Oncology Biol Phys*. 2002;53(5):1097–1105.
- Kuban DA, Tucker SL, Dong L, et al. Long-term results of the M. D. Anderson randomized dose-escalation trial for prostate cancer. *Int J Radiat Oncol Biol Phys*. 2008;70(1):67–74. doi:10.1016/j.ijrobp.2007.06.054
- Khuntia D, Reddy CA, Mahadevan A, Klein EA, Kupelian PA. Recurrence-free survival rates after external-beam radiotherapy for patients with clinical T1-T3 prostate carcinoma in the prostate-specific antigen era: what should we expect? *Cancer*. 2004;100(6):1283–1292. doi:10.1002/cncr.20093
- National Comprehensive Cancer Network. NCCN Clinical Practice Guidelines in Oncology. Prostate Cancer (Version 2.2020). Published May 21, 2020. Accessed July 10, 2020. https://www.nccn.org/professionals/physician_gls/pdf/prostate.pdf
- Geara FB, Bulbul M, Khauli RB, et al. Nadir PSA is a strong predictor of treatment outcome in intermediate and high risk localized prostate cancer patients treated by definitive external beam radiotherapy and androgen deprivation. *Radiat Oncol*. 2017;12(1):1–8. doi:10.1186/s13014-017-0884-y
- Pound CR, Partin AW, Eisenberger MA, Chan DW, Pearson JD, Walsh PC. Natural history of progression after PSA elevation following radical prostatectomy. *Jama*. 1999;281(17):1591–1597. doi:10.1001/jama.281.17.1591
- Roach M, Hanks G, Thames H, et al. Defining biochemical failure following radiotherapy with or without hormonal therapy in men with clinically localized prostate cancer: recommendations of the RTOG-ASTRO Phoenix consensus conference. *Int J Radiat Oncol Biol Phys*. 2006;65(4):965–974. doi:10.1016/j.ijrobp.2006.04.029
- Surveillance, Epidemiology and End Results Program (SEER). U.S. Population Data—1969–2018. Published 2019. Accessed January 3, 2020. <https://seer.cancer.gov/popdata/>
- Tsodikov A, Gulati R, de Carvalho TM, et al. Is prostate cancer different in black men? Answers from 3 natural history models. *Cancer*. 2017;123(12):2312–2319. doi:10.1002/cncr.30687

27. Mahal BA, Aizer AA, Ziehr DR, et al. Trends in disparate treatment of African American men with localized prostate cancer across national comprehensive cancer network risk groups. *Urology*. 2014;84(2):386-392. doi:10.1016/j.urology.2014.05.009
28. Godley PA. Racial differences in mortality among Medicare recipients after treatment for localized prostate cancer. *J Natl Cancer Inst*. 2003;95(22):1702-1710. doi:10.1093/jnci/djg094
29. Krongrad A, Lai H, Lai S. Disease specific death after external beam radiation of prostate cancer. *Prostate Cancer Prostatic Dis*. 1998;1(3):144-147. doi:10.1038/sj.pcan.4500223
30. Kim JA, Kuban DA, El-Mahdi AM, Schellhammer PF. Carcinoma of the prostate: race as a prognostic indicator in definitive radiation therapy. *Radiology*. 1995;194(2):545-549.
31. Williams VL, Awasthi S, Fink AK, et al. African-American men and prostate cancer-specific mortality: a competing risk analysis of a large institutional cohort, 1989–2015. *Cancer Med*. 2018;7(5):2160-2171. doi:10.1002/cam4.1451
32. Optenberg SA, Thompson IM, Friedrichs P, Wojcik B, Stein CR, Kramer B. Race, treatment, and long-term survival from prostate cancer in an equal-access medical care delivery system. *JAMA*. 1995;274(20):1599-1605. <https://jamanetwork.com/>
33. Freeman VL, Durazo-Arvizu R, Arozullah AM, Keys LSC. Determinants of mortality following a diagnosis of prostate cancer in veterans affairs and private sector health care systems. *Am J Public Health*. 2003;93(10):1706-1712. doi:10.2105/AJPH.93.10.1706
34. Graham-Steed T, Uchio E, Wells CK, Aslan M, Ko J, Concato J. “Race” and prostate cancer mortality in equal-access health-care systems. *Am J Med*. 2013;126(12):1084-1088. doi:10.1016/j.amjmed.2013.08.012
35. Powell IJ, Schwartz K, Hussain M. Removal of the financial barrier to health care: does it impact on prostate cancer at presentation and survival? A comparative study between black and white men in a veterans affairs system. *Urology*. 1995;46(6):825-830. doi:10.1016/S0090-4295(99)80352-5
36. Whitney CA, Howard LE, Amling CL, et al. Race does not predict the development of metastases in men with nonmetastatic castration-resistant prostate cancer. *Cancer*. 2016;122(24):3848-3855. doi:10.1002/cncr.30221
37. Alexander M, Zhu K, Cullen J, et al. Race and overall survival in men diagnosed with prostate cancer in the Department of Defense Military Health System, 1990–2010. *Cancer Causes Control*. 2019;30:627-635. doi:10.1007/s10552-019-01163-5
38. Dess RT, Hartman HE, Mahal BA, et al. Association of Black Race with prostate cancer-specific and other-cause mortality. *JAMA Oncol*. 2019;5:975-983. doi:10.1001/jamaoncol.2019.0826
39. Krimphove MJ, Cole AP, Fletcher SA, et al. Evaluation of the contribution of demographics, access to health care, treatment, and tumor characteristics to racial differences in survival of advanced prostate cancer. *Prostate Cancer Prostatic Dis*. 2019;22(1):125-136. doi:10.1038/s41391-018-0083-4
40. Kinlock Ballington L, Thorpe RJ, Howard DL, et al. Racial disparity in time between first diagnosis and initial treatment of prostate cancer. *Cancer Control*. 2016;23(1):47-51. doi:10.1177/107327481602300108
41. Stokes WA, Hendrix LH, Royce TJ, et al. Racial differences in time from prostate cancer diagnosis to treatment initiation: a population-based study. *Cancer*. 2013;119(13):2486-2493. doi:10.1002/cncr.27975
42. Hayn MH, Orom H, Shavers VL, et al. Racial/ethnic differences in receipt of pelvic lymph node dissection among men with localized/regional prostate cancer. *Cancer*. 2011;117(20):4651-4658. doi:10.1002/cncr.26103
43. Moses KA, Orom H, Brasel A, Gaddy J, Underwood W. Racial/ethnic differences in the relative risk of receipt of specific treatment among men with prostate cancer. *Urol Oncol Semin Orig Investig*. 2016;34(9):415.e7-415.e12. doi:10.1016/j.urolonc.2016.04.002
44. Mahal BA, Ziehr DR, Aizer AA, et al. Getting back to equal: the influence of insurance status on racial disparities in the treatment of African American men with high-risk prostate cancer. *Urol Oncol Semin Orig Investig*. 2014;32(8):1285-1291. doi:10.1016/j.urolonc.2014.04.014
45. Gross CP, Smith BD, Wolf E, Andersen M. Racial disparities in cancer therapy: did the gap narrow between 1992 and 2002? *Cancer*. 2008;112(4):900-908. doi:10.1002/cncr.23228
46. Shah C, Jones PM, Wallace M, et al. Differences in disease presentation, treatment outcomes, and toxicities in African American patients treated with radiation therapy for prostate cancer. *Am J Clin Oncol*. 2012;35(6):566-571. doi:10.1097/COC.0b013e3182208262
47. Spratt DE, Dess RT, Hartman HE, et al. Androgen receptor activity and radiotherapeutic sensitivity in African-American men with prostate cancer: a large scale gene expression analysis and meta-analysis of RTOG trials. *Int J Radiat Oncol*. 2018;102(3):S3. doi:10.1016/j.ijrobp.2018.06.104
48. Kaminski JM, Hanlon AL, Horwitz EM, Pinover WH, Mitra RK, Hanks GE. Relationship between prostate volume, prostate-specific antigen nadir, and biochemical control. *Int J Radiat Oncol Biol Phys*. 2002;52(4):888-892. doi:10.1016/S0360-3016(01)02764-X
49. Chandra A, Levy LB, Kuban DA. The predictive value of PSA nadir and time to nadir after external beam radiation for prostate cancer. *Int J Radiat Oncol Biol Phys*. 2004;60(1):S439-S440.
50. Wenzel M, Dariane C, Saad F, et al. The impact of time to prostate specific antigen nadir on biochemical recurrence and mortality rates after radiation therapy for localized prostate cancer. *Urol Oncol Semin Orig Investig*. 2021;40:57.e15-57.e23. doi:10.1016/j.urolonc.2021.06.025
51. 23andMe: Research. Published September 2019. Accessed December 17, 2021. <https://www.23andme.com/research>
52. Bryc K, Durand EY, Macpherson JM, Reich D, Mountain JL. The genetic ancestry of African Americans, Latinos, and European Americans across the United States. *Am J Hum Genet*. 2015;96(1):37-53. doi:10.1016/j.ajhg.2014.11.010

How to cite this article: Stroup SP, Robertson AH, Onofaro KC, et al. Race-specific prostate cancer outcomes in a cohort of low and favorable-intermediate risk patients who underwent external beam radiation therapy from 1990 to 2017. *Cancer Med*. 2022;11:4756-4766. doi: [10.1002/cam4.4802](https://doi.org/10.1002/cam4.4802)