

CORRECTION

Open Access



Correction: Mechanical thrombectomy in acute basilar artery stroke: a systematic review and Meta-analysis of randomized controlled trials

Abid Malik, Brian Drumm, Lucio D'Anna, Isabelle Brooks, Benjamin Low, Oishik Raha, Khawar Shabbir, Orsolya Vittay, Joseph Kwan, Zoe Brown, Omid Halse, Sohaa Jamil, Dheeraj Kalladka, Marius Venter, Harri Jenkins, Neil Rane, Abhinav Singh, Maneesh Patel, Charles Hall, Gavin Fatania, Dylan Roi, Kyriakos Lobotesis and Soma Banerjee*

Correction: BMC Neurol 22, 415 (2022)
<https://doi.org/10.1186/s12883-022-02953-2>

Following publication of the original article [1], the authors reported an error in the Fig. 2. The titles for each of the graphs have been removed. The correct Fig. 2 is shown below.

The original article [1] has been updated.

Published online: 20 December 2022

Reference

1. Malik A, Drumm B, D'Anna L, et al. Mechanical thrombectomy in acute basilar artery stroke: a systematic review and Meta-analysis of randomized controlled trials. *BMC Neurol*. 2022;22:415. <https://doi.org/10.1186/s12883-022-02953-2>.

The original article can be found online at <https://doi.org/10.1186/s12883-022-02953-2>.

*Correspondence: soma.banerjee@nhs.net

Stroke Centre, Department of Stroke and Neuroscience, Charing Cross Hospital, Imperial College London NHS Healthcare Trust, Fulham Palace Road, London W6 8RF, UK



© The Author(s) 2022. **Open Access** This article is licensed under a Creative Commons Attribution 4.0 International License, which permits use, sharing, adaptation, distribution and reproduction in any medium or format, as long as you give appropriate credit to the original author(s) and the source, provide a link to the Creative Commons licence, and indicate if changes were made. The images or other third party material in this article are included in the article's Creative Commons licence, unless indicated otherwise in a credit line to the material. If material is not included in the article's Creative Commons licence and your intended use is not permitted by statutory regulation or exceeds the permitted use, you will need to obtain permission directly from the copyright holder. To view a copy of this licence, visit <http://creativecommons.org/licenses/by/4.0/>. The Creative Commons Public Domain Dedication waiver (<http://creativecommons.org/publicdomain/zero/1.0/>) applies to the data made available in this article, unless otherwise stated in a credit line to the data.

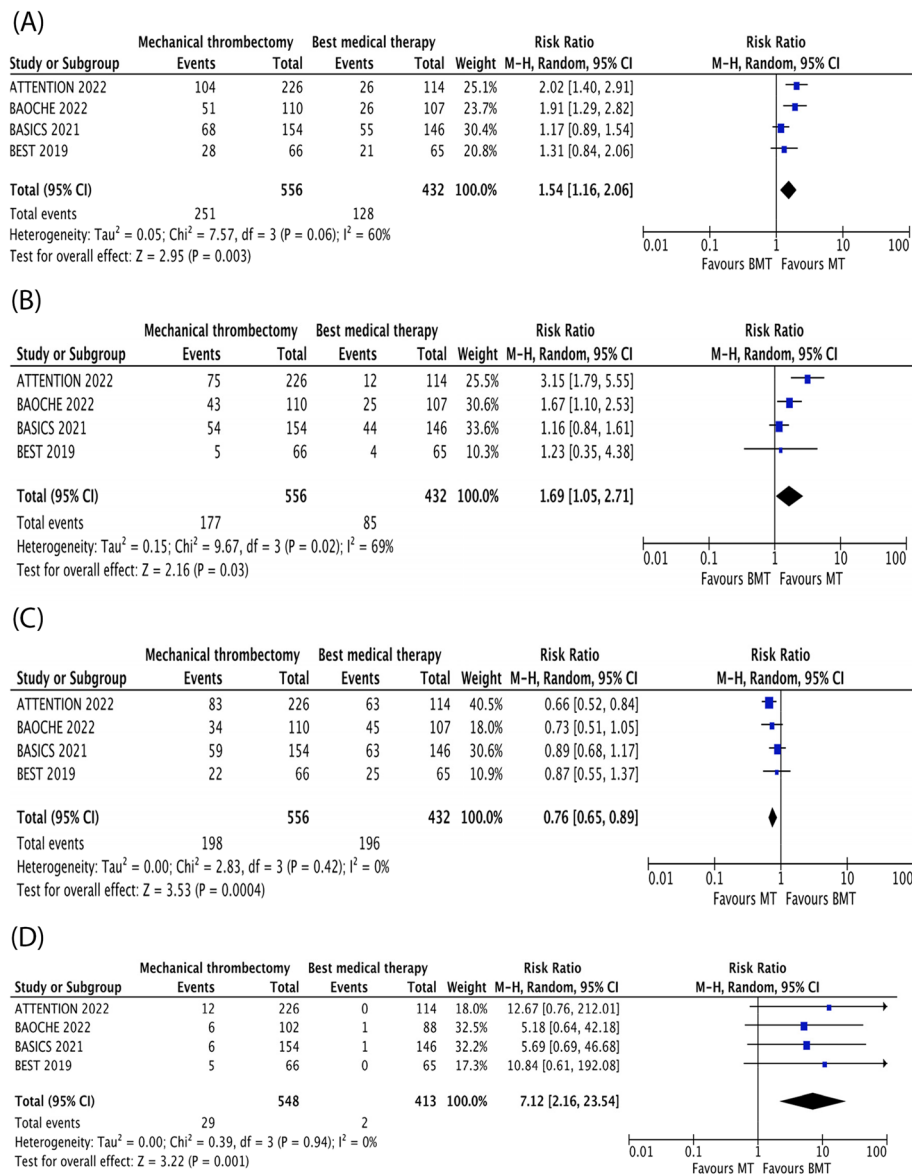


Fig. 2 Forest plots of primary and secondary outcomes. **A** Good functional outcome (mRS 0-3) **B** Functional independence (mRS 0-2) **C** Mortality **D** sICH