

# Pathogen spillover driven by rapid changes in bat ecology

<https://doi.org/10.1038/s41586-022-05506-2>

Received: 20 January 2022

Accepted: 1 November 2022

Published online: 16 November 2022

Open access

 Check for updates

Peggy Eby<sup>1,2,3</sup>, Alison J. Peel<sup>2</sup>, Andrew Hoegh<sup>4</sup>, Wyatt Madden<sup>5,9</sup>, John R. Giles<sup>6,10</sup>, Peter J. Hudson<sup>7</sup> & Raina K. Plowright<sup>5,8</sup>✉

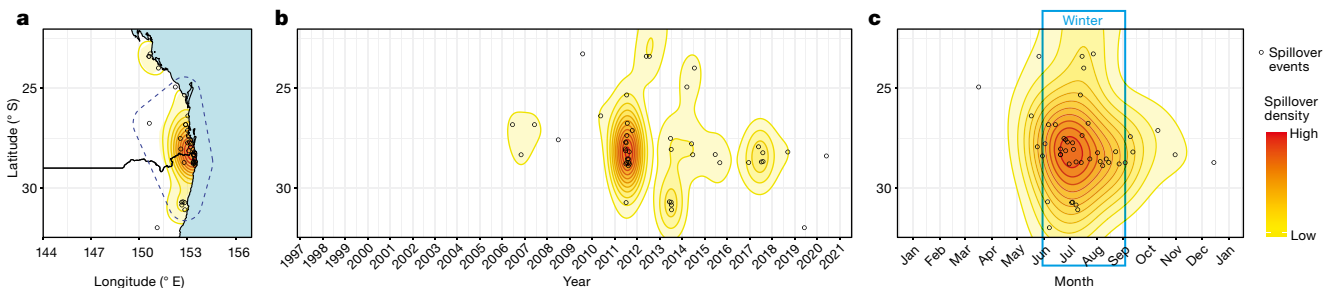
During recent decades, pathogens that originated in bats have become an increasing public health concern. A major challenge is to identify how those pathogens spill over into human populations to generate a pandemic threat<sup>1</sup>. Many correlational studies associate spillover with changes in land use or other anthropogenic stressors<sup>2,3</sup>, although the mechanisms underlying the observed correlations have not been identified<sup>4</sup>. One limitation is the lack of spatially and temporally explicit data on multiple spillovers, and on the connections among spillovers, reservoir host ecology and behaviour and viral dynamics. We present 25 years of data on land-use change, bat behaviour and spillover of Hendra virus from Pteropodid bats to horses in subtropical Australia. These data show that bats are responding to environmental change by persistently adopting behaviours that were previously transient responses to nutritional stress. Interactions between land-use change and climate now lead to persistent bat residency in agricultural areas, where periodic food shortages drive clusters of spillovers. Pulses of winter flowering of trees in remnant forests appeared to prevent spillover. We developed integrative Bayesian network models based on these phenomena that accurately predicted the presence or absence of clusters of spillovers in each of the 25 years. Our long-term study identifies the mechanistic connections between habitat loss, climate and increased spillover risk. It provides a framework for examining causes of bat virus spillover and for developing ecological countermeasures to prevent pandemics.

Zoonotic spillover is the transmission of a pathogen from a non-human vertebrate to a human<sup>1</sup>. Spillovers of viruses from bats have resulted in the emergence and spread of viruses in the human population. For example, SARS-CoV-2, SARS-CoV-1, Nipah and Hendra viruses have caused human mortalities, sometimes after transmission through an intermediate host<sup>5</sup>. Spillover of viruses from wildlife to humans has been correlated with land-use change through studies that associate land use, occurrence of spillover and presence of reservoir hosts, but without data that reveal the mechanisms<sup>1</sup>. In this long-term study, we observed rapid changes in bat behaviour that coincided with the emergence of Hendra virus. We found that bats were responding to environmental change by persistently behaving in ways that were previously observed as temporary responses to climate-driven food shortages. We propose that these behavioural shifts increased spillover risk by increasing contact of bats with domestic horses, the intermediate hosts from which Hendra virus spills over into humans, and by increasing viral shedding from bat populations that have established outside their normal winter range<sup>6</sup>. We developed and applied a Bayesian hierarchical network model to our 25 years of data on reservoir host ecology, behaviour and spillover events (Data Index in ref. <sup>7</sup>). We identified distal

and proximal drivers of links between habitat loss, climate and spillover, and predicted the risk of Hendra virus spillover in space and time. The Hendra virus system illustrates a suite of ecological connections that contribute to land-use-induced spillover of this pathogen: interactions between land-use change and climate altered the behaviour of wildlife reservoir hosts, increasing their proximity to domestic or human recipient hosts. We propose that this phenomenon, coupled with stressors that drive increased pathogen excretion<sup>6</sup>, leads to pathogen spillover.

Australian flying foxes (*Pteropus* spp., fruit bats) are reservoir hosts of Hendra virus, a henipavirus in the family Paramyxoviridae that does not cause discernible disease in bats, but has a case fatality rate of 75% in horses (84 fatalities documented) and 57% in humans (four fatalities documented)<sup>8</sup>. Among subtropical Pteropodids, *Pteropus alecto* (black flying fox) is the species most likely to excrete Hendra virus<sup>9</sup>. Infected bats feeding in horse paddocks shed the virus in excreta or spats that horses contact when grazing, leading to infection<sup>9,10</sup>. Humans are exposed through infected horses<sup>8</sup>. Hendra virus has probably circulated in bats far longer than Europeans have occupied Australia<sup>11</sup>, yet Hendra spillover was not identified until 1994. After approximately 2006, the frequency of Hendra virus spillovers increased<sup>10</sup>. Forty one of

<sup>1</sup>School of Biological, Earth, and Environmental Sciences, University of New South Wales, Sydney, New South Wales, Australia. <sup>2</sup>Centre for Planetary Health and Food Security, Griffith University, Nathan, Queensland, Australia. <sup>3</sup>Center for Large Landscape Conservation, Bozeman, MT, USA. <sup>4</sup>Department of Mathematical Sciences, Montana State University, Bozeman, MT, USA. <sup>5</sup>Department of Microbiology and Cell Biology, Montana State University, Bozeman, MT, USA. <sup>6</sup>Department of Epidemiology, Johns Hopkins Bloomberg School of Public Health, Baltimore, MD, USA. <sup>7</sup>Center for Infectious Disease Dynamics, Pennsylvania State University, State College, PA, USA. <sup>8</sup>Department of Public and Ecosystem Health, Cornell University, Ithaca, NY, USA. <sup>9</sup>Present address: Department of Biostatistics and Bioinformatics, Rollins School of Public Health, Emory University, Atlanta, GA, USA. <sup>10</sup>Present address: Institute for Health Metrics and Evaluation, University of Washington, Seattle, WA, USA. ✉e-mail: raina.plowright@cornell.edu



**Fig. 1 | Temporal and spatial distribution of documented Hendra virus spillovers to horses in the Australian subtropics from 1996 to 2020.**  
**a**, Distribution of spillovers across subtropical eastern Australia from 1996 to present. The dotted blue line denotes our study area. **b**, Hendra virus spillover

the 63 spillovers documented to January 2021 occurred in subtropical eastern Australia<sup>12</sup>. The majority of spillovers occurred during the Austral winter and were clustered in space and time (Fig. 1 and Supplementary Information Section 1).

Our research focused on spillover to horses in the Australian subtropics, where *Pteropus* spp. primarily feed on nectar. Historically, the bats were nomadic, moving among roost sites to track ephemeral pulses of flowering by *Eucalyptus* spp. over hundreds of kilometres<sup>13–15</sup>; continuous occupancy of roosts was uncommon<sup>13</sup>. During summer, many tree species that are abundant and widely distributed provide food for bats<sup>16</sup>. During winter, few tree species provide food for bats, and the naturally limited distribution and abundance of these trees<sup>16</sup> has been further restricted by clearing for urban development and agriculture<sup>17,18</sup>. Pulses of mass flowering in remnant forests leads to a high proportion of the bat population becoming concentrated in small areas, typically in coastal lowlands<sup>13</sup>. Loss of these winter food sources can have severe impacts on the bat population<sup>16,17</sup>. When trees that provide food in winter or spring do not flower, as occurs every 1 to 4 years owing to variation in temperature and rainfall<sup>19,20</sup>, bats experience brief (typically 3 to 12 week) food shortages. They respond to the shortages by roosting in small groups (population fission) close to reliable but often suboptimal food in urban gardens and agricultural areas (for example, fruit from ornamental, commercial or weed species)<sup>13,17,21–23</sup>. In the past, these behavioural responses persisted only for the duration of acute food stress, and bats returned to nomadism and nectivory when the food shortage abated<sup>22,24,25</sup>.

To investigate the relationships between land-use change, changes in bat behaviour and spillover, we collected empirical data from 1996 to 2020 within an area bounded by the locations of spillovers in the subtropics (Fig. 1a, Extended Data Fig. 1a and Supplementary Information Section 1). These data include the location and timing of Hendra virus spillovers (Dataset A in ref. <sup>12</sup>), locations and occupancy of the roosts (Datasets B,C)<sup>26,27</sup>, characteristics of the roosts and foraging areas around the roosts (Datasets B,C,I)<sup>26–28</sup>, climate (Dataset D in the Data Index)<sup>7</sup>, nectar shortages (Dataset E)<sup>29</sup>, measures of bat fitness (Dataset F and G)<sup>30,31</sup>, flowering pulses during winter (Dataset J)<sup>32</sup> and loss of winter foraging habitat (Datasets K,L and M in the Data Index<sup>7</sup> and Supplementary Sections 1–13).

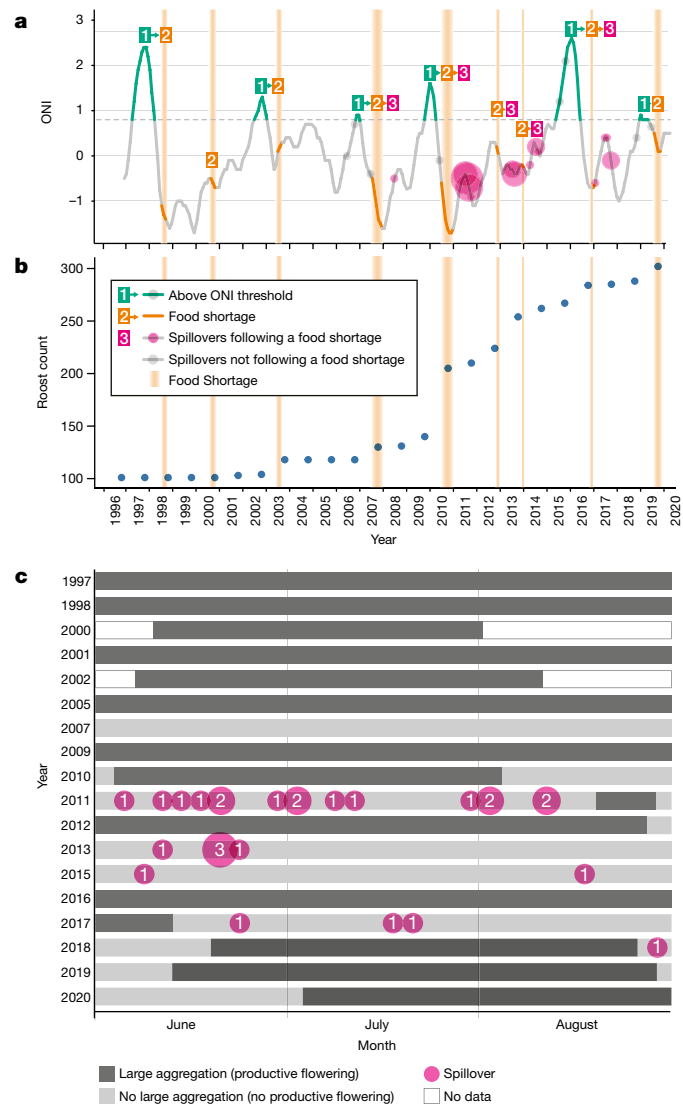
From 1996 until approximately 2002, roosting and foraging behaviours were stable, and no Hendra virus spillovers were detected (Figs. 1 and 2a,b). From approximately 2003 until 2020, bat behaviour and the incidence of spillovers changed rapidly: the number of roosts tripled, and 40 spillovers were detected (Supplementary Information Sections 1 and 3 and Figs. 1 and 2). From 2006 to 2020, spillovers were detected in 80% of years, and 75% of spillovers occurred in annual clusters of three or more (Fig. 1). Neither a change in the definition of a Hendra virus case in horses in 2008, nor the availability of a horse vaccine in late 2012, explain the observed pattern of spillover events (Supplementary Information Section 1).

by date of horse fatality from 1996 to present. Spillover events cluster in space in some years. **c**, Hendra virus spillover by month. In the subtropics, spillovers occur primarily during the Austral winter. The base-map was obtained from the Australian Bureau of Statistics digital boundary files ([www.abs.gov.au](http://www.abs.gov.au)).

We used nectar productivity data from commercial apiarists and measures of flying fox fitness to identify nine winter and spring food shortages during the study period (Supplementary Information Section 7 and Fig. 2a,b). During food shortages, the absence of nectar was associated with a sharp increase in the number of bats admitted into wildlife rehabilitation centres (at least 30 animals in a month) and a low percentage of lactating females with pre-weaning young (<79%; Supplementary Information Section 7 (ref. <sup>33</sup>) and Extended Data Figs. 2 and 3). Food shortages followed all strong El Niño events (Oceanic Niño Index  $\geq 0.8$ ), and also occurred independently of El Niño events (Fig. 2a).

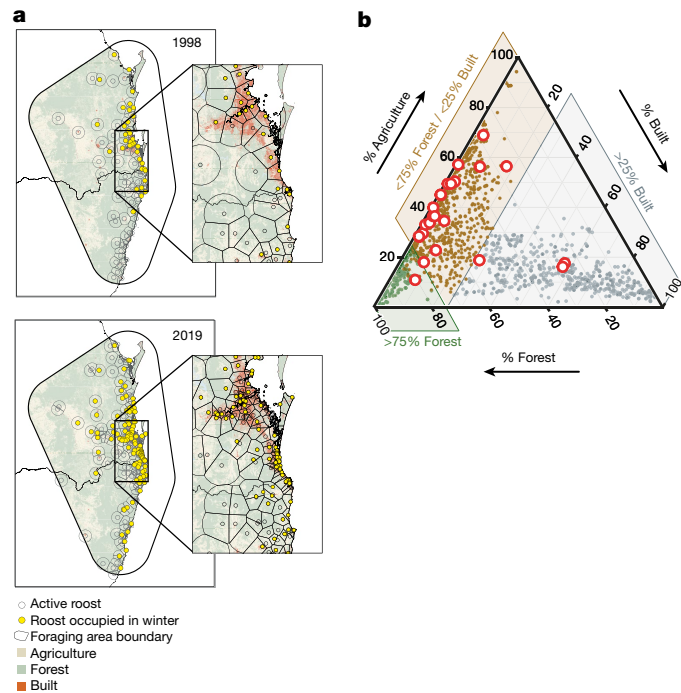
Early in the study period, the number of roosts was stable. Although food shortages occurred, the bat population fission events were brief (weeks), bats quickly returned to nomadism when the shortage abated and the fission events were not captured in the roost counts. Following this, the number of roosts increased in steps that coincided with food shortages (2003, 2007 and 2010) and then continued to increase steadily (Fig. 2b). As the number of roosts increased, bats roosted in smaller groups that were closer together and fed within smaller areas, and new roosts formed in locations that increased access to anthropogenic foods in agricultural and urban areas (Fig. 3 and Extended Data Figs. 4 and 5a–c). We infer that fissioning of bat populations into smaller groups near anthropogenic food reduces the energetic costs of foraging and allows the bats to mitigate effects of nutritional and energetic stress<sup>25</sup>. Whereas in the past, the behavioural response of bats to food shortages (population fission) persisted only for the duration of acute food stress<sup>22,24,25</sup>, we observed the behavioural response becoming persistent (Extended Data Fig. 4). To assess the mechanisms associated with the rapid change in bat behaviour, we examined loss of winter foraging habitat across far Southeast Queensland (Supplementary Information 12 and Extended Data Fig. 1b). Before European settlement, winter habitat was extensive in this region (Extended Data Fig. 5d). More than 70% of the forest that provided winter habitat was cleared before 1996, and clearing continued at a constant rate (Extended Data Fig. 5e,g,h). In four of the six years from 1996 to approximately 2002, during which bat behaviour was consistent and no spillover occurred, we recorded aggregations of at least 100,000 nomadic bats associated with mass pulses of flowering in winter habitat in this region (Extended Data Fig. 5f). By 2018, nearly a third of the habitat that was present in 1996 had been cleared (Extended Data Fig. 5e); the number of roost sites had increased fivefold (Extended Data Fig. 4), with 87% of new roosts forming in urban areas. By 2020, winter aggregations of at least 100,000 in far Southeast Queensland had been recorded once in 14 years (Extended Data Fig. 5f). Although bats relocated to both urban and agricultural areas, most spillovers (86%) occurred in agricultural areas (Fig. 3b), presumably because horses were present at higher densities in agricultural areas than in urban areas.

We developed the parsimonious hypothesis that the combination of acute winter/spring food shortages followed by a lack of winter flowering in the following year yields the highest risk of spillover, especially from roosts in agricultural areas. We tested this mechanistic



**Fig. 2 | Relationships between climate, periods of nutritional and energetic stress for bats and Hendra virus spillovers.** **a**, Temporal associations among the ONI, acute food shortages (identified by apiarists) and winter spillovers. A strong El Niño event (ONI > 0.8) consistently led to food shortages the following winter or spring, although food shortages can occur independently of ONI. During the early study period (1996 to 2002), food shortages did not lead to Hendra virus spillovers; during the period of rapid change, when bat populations were fissioning into urban and agricultural areas, food shortages led to Hendra virus spillovers during the following winter. **b**, Number of roosts in the study area. **c**, Timing of winter spillover events in relation to the presence of large aggregations (at least 100,000 bats) and productive flowering of diet species in southeast Australia during winter (June to August). Each row indicates a winter for which data were available. Data are missing for winter aggregations for 1999, 2003, 2004, 2006, 2008 and 2014 (Supplementary Table 5a).

hypothesis with a multiscale Bayesian network model<sup>34</sup>. We included six variables: strong El Niño events (Oceanic Niño Index  $\geq 0.8$ ), food shortages, winter-flowering pulses, land cover within the foraging areas of winter colonies of *P. alecto*, population fissioning (establishment of new roosts) and number of Hendra virus spillovers (Supplementary Information Section 13 and Supplementary Fig. 1). We validated the predictive ability of the network model with leave-one-out cross-validation and expected log pointwise predictive density. We verified this by using a leave-one-out cross-validation for model selection with more than 1,000 simulated datasets (Supplementary Information Section 13). The best model supported that spillover clusters occur following a

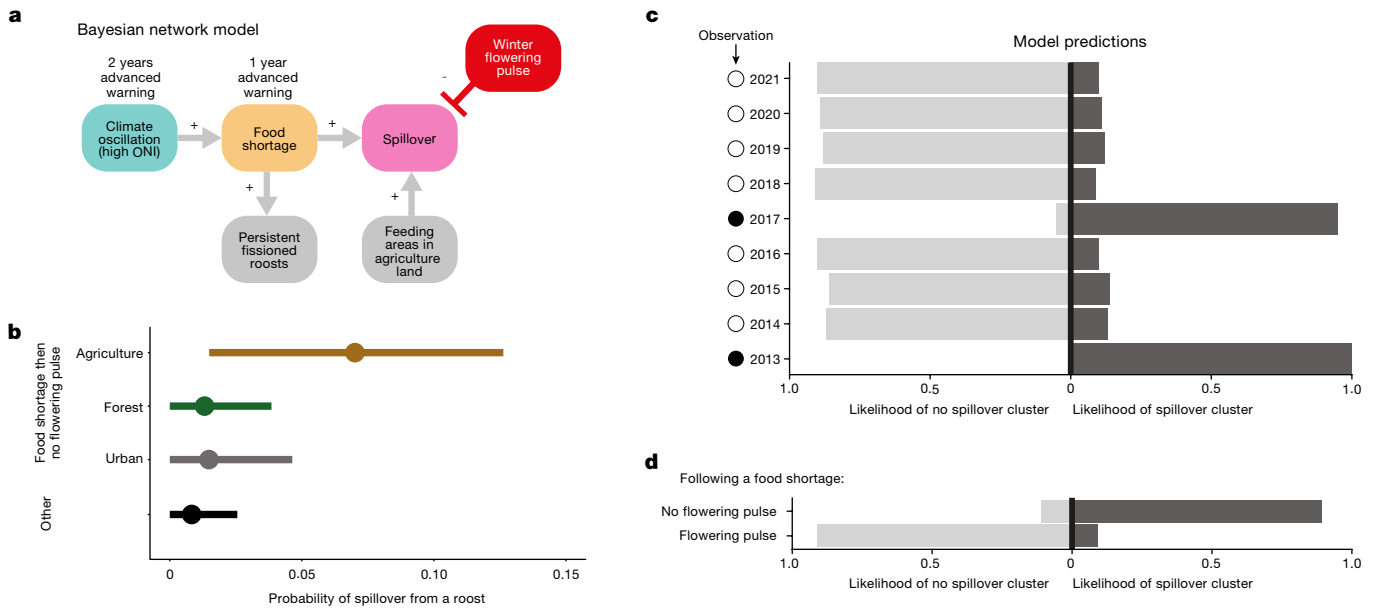


**Fig. 3 | The distribution of *Pteropus alecto* roosts during winter.** **a**, Expansion of the number and distribution of roosts occupied by *Pteropus alecto* during winter from 1998 to 2019. The base-map was obtained from the Australian Bureau of Statistics digital boundary files ([www.abs.gov.au](http://www.abs.gov.au)). **b**, Proportion of the foraging area surrounding roosts that was classified as built, forested or agricultural (Supplementary Information 13). The red circles indicate roosts that were the sources of winter spillovers.

sequence of events over three successive years. First, it indicated that strong El Niño events preceded food shortages, and food shortages coincided with population fissioning (Fig. 4a, Extended Data Figs. 6–8 and Supplementary Tables 7–9). Second, the greatest likelihood of spillover from a given roost was associated with *P. alecto* feeding in agricultural areas during a winter that followed an acute food shortage, but in which there was no pulse of flowering (0.014, 0.126 highest posterior density probability interval; Fig. 4b). By contrast, the presence of a pulse of winter flowering that attracted at least 100,000 bats mitigated spillover risk (0.000, 0.026 probability interval; Fig. 2c and Fig. 4b, Extended Data Fig. 9 and Supplementary Table 5).

We used the model to make probabilistic predictions of whether a cluster of spillovers (defined as three or more spillovers) would occur in the study area from 1996 to 2021. We used all available information up to a given time point, starting with 2013 (Fig. 4c and Extended Data Fig. 10a,b). For example, to predict a cluster of spillovers in 2020 (Fig. 4d and Extended Data Fig. 10c), we used information collected to the end of 2019. In all cases, model predictions were consistent with observations of the presence or absence of clusters of spillovers in the context of winter flowering. We also verified the predictive ability of our model with fivefold cross-validation; our model accurately predicted the presence or absence of a cluster of spillovers in each of the 25 years in the data (Extended Data Fig. 8).

These data document increasing rates of transmission of a fatal zoonotic virus in a rapidly changing anthropogenic system. Our work suggests that previously transient fissioning of bat populations in response to periods of food shortage has become persistent. This behavioural response leads to the increased use of agricultural and urban areas by bats in winter (Fig. 3). Food shortages occurred throughout the 25-year study period (Fig. 2a,b), probably driven by the lagged effects of climate on *Eucalyptus* flowering<sup>20</sup>. However, spillovers were not associated with food shortages until bats persistently overwintered in agricultural areas in proximity to horses, and winter-flowering pulses



**Fig. 4 | Prediction of spillover on the basis of bat ecology and ecological conditions.** **a**, Structure of the Bayesian network model: strong El Niño events preceded food shortages that were associated with population fissioning and formation of persistent roosts in agricultural and urban areas. Spillover risk was greatest when *Pteropus alecto* fed in agricultural areas during a winter that followed an acute food shortage. The presence of a pulse of winter flowering that attracted large aggregations of bats mitigated spillover risk. Time delays between high ONI, food shortages and spillover allow advanced prediction, although winter-flowering pulses that mitigate spillover could not be predicted in advance. **b**, Probability of a spillover at the roost level given scenarios of land use under the condition of a food shortage followed by no winter-flowering pulse. Other, collates all other scenarios of the presence and absence of food shortages and flowering pulses. The circles are maximum

a posteriori point estimates, and the bars are 95% highest posterior density credible intervals. **c**, Predicted probability of a cluster of spillovers in each year from 2013 to 2021. Predictions for a given year were made with all observations to that date; information from future years was not incorporated into predictions. In 2017 and 2013, food shortages in the year before and no winter-flowering pulse led to elevated risk of spillover, whereas in the other years, no clusters of spillovers were predicted. All predictions were consistent with the realized data on the absence (open circles) or presence (closed circles) of clusters of spillover. **d**, Predictive probability of a cluster of spillovers in winter 2020, following a food shortage in 2019. A winter-flowering pulse occurred in early July 2020 and no winter spillovers were observed. We predicted that a cluster of spillover events would have occurred if there had not been a flowering pulse.

became less frequent (Figs. 2c,3 and 4a). We propose that the loss of winter-flowering habitat and consequent decline in the abundance of winter nectar contributes to the persistence of bats in agricultural and urban areas (Supplementary Information Section 12, Fig. 2c and Extended Data Fig. 5d–h). The consequences of more bats in areas with human settlements include not only increased risk of viral spillover from bats to horses to humans, but also increased conflict with humans<sup>35</sup>.

The contemporary association between food shortages, population fission and spillover may be explained by both increased proximity of bats and horses, and physiological stress in novel winter habitats. Bats in roosts that recently formed outside of the historic winter range of the species excreted more Hendra virus in winter, especially after food shortages, than bats in roosts within the historic winter range of the species<sup>6</sup>. Bats in urban and agricultural areas rely on suboptimal food, which may lead to nutritional stress that facilitates viral shedding<sup>36–39</sup>. Nutritional stress has been linked to infection and shedding of Hendra virus<sup>36,39</sup>, coronaviruses<sup>40</sup> and other viruses in reservoir host systems<sup>41</sup>; moreover, Hendra virus spillover events in the subtropics have been associated with small roosts with limited access to native food<sup>19</sup>. The timing of Hendra virus spillover clusters in winter, months after the food shortages in the previous year, may be owing to the cumulative effects of nutritional stress overlaying high energy requirements in winter (thermoregulation and pregnancy) and scarce resources within suboptimal habitats. Although the time-lag between food shortages and spillover requires further investigation, we suggest that the processes driving spillover of Hendra virus are general phenomena that link land-use change and pathogen emergence: behavioural responses to loss of habitat increase contact with recipient hosts, and physiological and immunological responses to food limitation increase pathogen excretion<sup>4</sup>.

Our data suggest that increasingly rare winter-flowering pulses reduce the risk of spillover. Bats reverted to nomadism and left agricultural and urban areas during pulses of winter flowering in remnant native forest, and spillovers did not occur during these flowering pulses (Fig. 2c). We propose that these pulses of flowering may mitigate zoonotic risk by drawing large numbers of bats (Supplementary Information Section 11 (ref. 32)) away from feeding in agricultural areas and, therefore, decreasing contact between bats and horses. This nomadism may also reduce competition for food among the bats that remain in agricultural areas. Understanding these mechanisms requires further work. Nevertheless, the loss of native forest that supports large aggregations of nomadic bats appears to be fundamental to the cascade of events that lead to spillover. An extensive programme of ecological protection and restoration of winter-flowering forests (ecological countermeasures) could be a sustainable, long-term strategy to reduce spillover and protect the health of livestock and humans<sup>42</sup>.

The consistent temporal association of Oceanic Niño Index (ONI) thresholds with food shortages and spillover events allows for the prediction of spillover clusters up to two years in advance through surveillance of climate, or alternatively, one year in advance through surveillance of bat reproduction and bat admissions to wildlife rehabilitation centres (Fig. 4c). However, we cannot as yet predict winter-flowering pulses, and these must be monitored in real time. For example, the conditions leading into winter 2020 suggested that multiple spillover events would occur (Fig. 4d). However, we were unable to predict the pulse of winter flowering that attracted more than 200,000 bats that appears to have prevented winter spillovers. With retrospective information on flowering, our Bayesian network model correctly predicted the absence of a cluster of spillover events in 2020.

Prevention of spillovers requires characterization of the interactions of reservoir and recipient species with their environment in the context of rapid land-use change and climate variability. Monitoring of ecological processes that occur at different temporal extents, including those longer than natural climatic cycles such as El Niño, is essential to understanding the drivers of spillover. Yet long-term data on reservoir hosts, especially bats, are sparse<sup>43</sup>. Many bat species that are the reservoir hosts of zoonotic pathogens depend on ephemeral resources, and occupy ecosystems in which loss of native vegetation, high livestock density and human populations coincide<sup>44–46</sup>. Moreover, some bat species can adapt to human-modified landscapes to mitigate the effects of loss of their native habitat. These species may present greater risks of spillover, as has been observed in other wildlife taxa<sup>47</sup>. We identified key processes connecting land-use change to spillover through behavioural responses of bats to altered food availability. We suggest that behavioural and physiological responses to rapid, human-induced environmental change increased contact between reservoir hosts and recipient hosts, and increased shedding of pathogen<sup>6</sup> within proximity of recipient hosts. This study, therefore, suggests a general framework for examining causes and potential ways to mitigate bat virus spillover in regions without long-term data on reservoir hosts.

## Online content

Any methods, additional references, Nature Portfolio reporting summaries, source data, extended data, supplementary information, acknowledgements, peer review information; details of author contributions and competing interests; and statements of data and code availability are available at <https://doi.org/10.1038/s41586-022-05506-2>.

- Plowright, R. K. et al. Pathways to zoonotic spillover. *Nat. Rev. Microbiol.* **15**, 502–510 (2017).
- Jones, K. E. et al. Global trends in emerging infectious diseases. *Nature* **451**, 990–993 (2008).
- Gottdenker, N. L., Streicker, D. G., Faust, C. L. & Carroll, C. Anthropogenic land use change and infectious diseases: a review of the evidence. *Ecohealth* **11**, 619–632 (2014).
- Plowright, R. K. et al. Land use-induced spillover: a call to action to safeguard environmental, animal, and human health. *Lancet Planet. Health* **5**, e237–e245 (2021).
- Letko, M., Seifert, S. N., Olival, K. J., Plowright, R. K. & Munster, V. J. Bat-borne virus diversity, spillover and emergence. *Nat. Rev. Microbiol.* **18**, 461–471 (2020).
- Becker, D. J., Eby, P., Madden, W., Peel, A. J. & Plowright, R. K. Ecological conditions predict the intensity of Hendra virus excretion over space and time from bat reservoir hosts. *Ecol. Lett.* <https://doi.org/10.1111/ele.14007> (2022).
- Eby, P. et al. Data from pathogen spillover driven by rapid changes in bat ecology. Data Index. *Cornell University eCommons Digital Repository* <https://doi.org/10.7298/pjib-3360> (2022).
- Halpin, K. et al. Pteropid bats are confirmed as the reservoir hosts of henipaviruses: a comprehensive experimental study of virus transmission. *Am. J. Trop. Med. Hyg.* **85**, 946–951 (2011).
- Edson, D. et al. Routes of Hendra virus excretion in naturally-infected flying-foxes: implications for viral transmission and spillover risk. *PLoS ONE* **10**, e0140670 (2015).
- Plowright, R. K. et al. Ecological dynamics of emerging bat virus spillover. *Proc. Royal Soc. B* **282**, 20142124 (2015).
- Wang, L. F., Walker, P. J. & Poon, L. L. M. Mass extinctions, biodiversity and mitochondrial function: are bats 'special' as reservoirs for emerging viruses? *Curr. Opin. Virol.* **1**, 649–657 (2011).
- Eby, P. et al. Data from pathogen spillover driven by rapid changes in bat ecology. Dataset A: register of Hendra virus spillovers to horses. *Cornell University eCommons Digital Repository* <https://doi.org/10.7298/3dbp-t721> (2022).
- Fleming, T. H. & Eby, P. In *Ecology of Bats* (eds Kunz, T. H. & Fenton, M. B.) 156–208 (Univ. of Chicago Press, 2003).
- Eby, P. Seasonal movements of grey-headed flying-foxes, *Pteropus poliocephalus* (Chiroptera, Pteropodidae), from 2 maternity camps in Northern New-South-Wales. *Wildl. Res.* **18**, 547–559 (1991).
- Roberts, B. J., Catterall, C. P., Eby, P. & Kanowski, J. Long-distance and frequent movements of the flying-fox *Pteropus poliocephalus*: implications for management. *PLoS ONE* **7**, e42532 (2012).
- Eby, P. & Law, B. *Ranking the Feeding Habitat of Grey-headed Flying Foxes for Conservation Management* (Department of Environment and Climate Change (NSW) & Department of Environment, Water, Heritage, & the Arts, 2008).
- Eby, P., Richards, G., Collins, L. & Parry-Jones, K. The distribution, abundance and vulnerability to population reduction of a nomadic nectarivore, the grey-headed flying-fox *Pteropus poliocephalus* in New South Wales, during a period of resource concentration. *Aust. Zool.* **31**, 240–253 (1999).
- Catterall, C. P., Kingston, M. B., Park, K. & Sewell, S. Deforestation, urbanisation and seasonality: interacting effects on a regional bird assemblage. *Biol. Conserv.* **84**, 65–81 (1998).
- Giles, J. R., Plowright, R. K., Eby, P., Peel, A. J. & McCallum, H. Models of eucalypt phenology predict bat population flux. *Ecol. Evol.* **6**, 7230–7245 (2016).

- Hudson, I. L., Keatley, M. & Kang, I. Wavelet characterization of eucalypt flowering and the influence of climate. *Environ. Ecol. Stat.* **18**, 513–533 (2011).
- Páez, D. J., Restif, O., Eby, P. & Plowright, R. K. Optimal foraging in seasonal environments: implications for residency of Australian flying foxes in food-subsidized urban landscapes. *Philos. Trans. R. Soc. B* **373**, 20170097 (2018).
- Ratcliffe, F. N. *The Flying Fox in Australia (Pteropus)*. Bulletin No. 53 (Commonwealth Council for Scientific and Industrial Research, 1931).
- Meade, J., Martin, J. M. & Welbergen, J. A. Fast food in the city? Nomadic flying-foxes commute less and hang around for longer in urban areas. *Behav. Ecol.* **32**, 1151–1162 (2021).
- Eby, P. *The Biology and Management of Flying-foxes in New South Wales*. Report No. 18 (New South Wales National Parks and Wildlife Service, 1995).
- Wong, B. & Candolin, U. Behavioral responses to changing environments. *Behav. Ecol.* **26**, 665–673 (2015).
- Eby, P. et al. Data from pathogen spillover driven by rapid changes in bat ecology. Dataset B: register of flying fox roosts in the study area. *Cornell University eCommons Digital Repository* <https://doi.org/10.7298/kdht-sp38> (2022).
- Eby, P. et al. Data from pathogen spillover driven by rapid changes in bat ecology. Dataset C: SEQ monthly roost distribution and population estimates. *Cornell University eCommons Digital Repository* <https://doi.org/10.7298/ajmw-mp18> (2022).
- Eby, P. et al. Data from pathogen spillover driven by rapid changes in bat ecology. Dataset I: landcover data. *Cornell University eCommons Digital Repository* <https://doi.org/10.7298/x71e-c660> (2022).
- Eby, P. et al. Data from pathogen spillover driven by rapid changes in bat ecology. Dataset E: months of nectar shortage. *Cornell University eCommons Digital Repository* <https://doi.org/10.7298/tb5p-dr98> (2022).
- Eby, P. et al. Data from pathogen spillover driven by rapid changes in bat ecology. Dataset F: records of wildlife rehabilitation centers. *Cornell University eCommons Digital Repository* <https://doi.org/10.7298/j3q2-gw32> (2022).
- Eby, P. et al. Data from pathogen spillover driven by rapid changes in bat ecology. Dataset G: assessments of pre-weaning reproductive output. *Cornell University eCommons Digital Repository* <https://doi.org/10.7298/3vha-5m37> (2022).
- Eby, P. et al. Data from pathogen spillover driven by rapid changes in bat ecology. Dataset J: winter flower pulses. *Cornell University eCommons Digital Repository* <https://doi.org/10.7298/rmh-zc23> (2022).
- Eby, P. et al. Data and scripts from pathogen spillover driven by rapid changes in bat ecology. Food shortage regression tree model. *Cornell University eCommons Digital Repository* <https://doi.org/10.7298/rdbe-cy49> (2022).
- Eby, P. et al. Data and figure from pathogen spillover driven by rapid changes in bat ecology. Bayesian network model. *Cornell University eCommons Digital Repository* <https://doi.org/10.7298/y0nr-e545> (2022).
- Roberts, B. J., Mo, M., Roache, M. & Eby, P. Review of dispersal attempts at flying-fox camps in Australia. *Aust. J. Zool.* **68**, 254–272 (2020).
- Plowright, R. K. et al. Reproduction and nutritional stress are risk factors for Hendra virus infection in little red flying foxes (*Pteropus scapulatus*). *Proc. Royal Soc. B* **275**, 861–869 (2008).
- Plowright, R. K. et al. Transmission or within-host dynamics driving pulses of zoonotic viruses in reservoir–host populations. *PLoS Negl. Trop. Dis.* **10**, e0004796 (2016).
- Peel, A. J. et al. Synchronous shedding of multiple bat paramyxoviruses coincides with peak periods of Hendra virus spillover. *Emerg. Microbes Infect.* **8**, 1314–1323 (2019).
- Edson, D. et al. Time of year, age class and body condition predict Hendra virus infection in Australian black flying foxes (*Pteropus alecto*). *Epidemiol. Infect.* **147**, e240 (2019).
- Wacharapluesadee, S. et al. Longitudinal study of age-specific pattern of coronavirus infection in Lyle's flying fox (*Pteropus lylei*) in Thailand. *Virol. J.* **15**, 38 (2018).
- Owen, J. et al. Reservoir hosts experiencing food stress alter transmission dynamics for a zoonotic pathogen. *Proc. R. Soc. Lond. B Biol. Sci.* **288**, 20210881 (2021).
- Reaser, J. K., Witt, A., Tabor, G. M., Hudson, P. J. & Plowright, R. K. Ecological countermeasures for preventing zoonotic disease outbreaks: when ecological restoration is a human health imperative. *Restor. Ecol.* **29**, e13357 (2021).
- Becker, D. J., Crowley, D. E., Washburne, A. D. & Plowright, R. K. Temporal and spatial limitations in global surveillance for bat filoviruses and henipaviruses. *Biol. Lett.* **15**, 20190423 (2019).
- Kessler, M. K. et al. Changing resource landscapes and spillover of henipaviruses. *Ann. N.Y. Acad. Sci.* **1429**, 78 (2018).
- McKee, C. D. et al. The ecology of Nipah virus in Bangladesh: a nexus of land-use change and opportunistic feeding behavior in bats. *Viruses* **13**, 169 (2021).
- Rulli, M. C., D'Odorico, P., Galli, N. & Hayman, D. T. Land-use change and the livestock revolution increase the risk of zoonotic coronavirus transmission from rhinolophid bats. *Nat. Food* **2**, 409–416 (2021).
- Gibb, R. et al. Zoonotic host diversity increases in human-dominated ecosystems. *Nature* **584**, 398–402 (2020).

**Publisher's note** Springer Nature remains neutral with regard to jurisdictional claims in published maps and institutional affiliations.



**Open Access** This article is licensed under a Creative Commons Attribution 4.0 International License, which permits use, sharing, adaptation, distribution and reproduction in any medium or format, as long as you give appropriate credit to the original author(s) and the source, provide a link to the Creative Commons licence, and indicate if changes were made. The images or other third party material in this article are included in the article's Creative Commons licence, unless indicated otherwise in a credit line to the material. If material is not included in the article's Creative Commons licence and your intended use is not permitted by statutory regulation or exceeds the permitted use, you will need to obtain permission directly from the copyright holder. To view a copy of this licence, visit <http://creativecommons.org/licenses/by/4.0/>.

## Reporting summary

Further information on research design is available in the Nature Portfolio Reporting Summary linked to this article.

## Data availability

The datasets generated and analysed during the current study are available in the Cornell University eCommons Digital Repository or they are available as open access files. The URLs are provided in the Data Index <https://doi.org/10.7298/pjib-3360>, with the exception of records from commercial apiarists (Supplementary Information Section 7) that are constrained by commercial in-confidence considerations. Dataset URLs: Dataset A, <https://doi.org/10.7298/3dbp-t721>; Dataset B, <https://doi.org/10.7298/kdht-sp38>; Dataset C, <https://doi.org/10.7298/ajmw-mp18>; Dataset E, <https://doi.org/10.7298/tb5p-dr98>; Dataset F, <https://doi.org/10.7298/j3q2-gw32>; Dataset G, <https://doi.org/10.7298/3vha-5m37>; Dataset I, <https://doi.org/10.7298/x71e-c660>; Dataset J, <https://doi.org/10.7298/rmh-zc23>.

## Code availability

Code generated during the current study, and the input data for the models, are available in the Supplementary Information and Cornell University eCommons Digital Repository: <https://doi.org/10.7298/rbde-cy49>; <https://doi.org/10.7298/y0nr-e545>.

**Acknowledgements** We thank B. Han, H. McCallum, M. Ruiz-Aravena, T. Lunn, L. McGuire, E. Fleishman, G. Tabor, D. Kerlin, B. Hunt, M. Higgs and T. Creech for comments on the manuscript or statistical methods. We thank R. Egloff for help with the figures. We thank P. Freeman, P. Kemsley, L. Ruytenberg, J. Wood, L. Collins, S. Stanford, P. Space, B. White, T. Whitehead, B. Winner, D. Sommerville, P. Reid, H. Field, N. Kung and C. Smith for helpful conversations and data. The Griffith University Human Research Ethics Committee (GUHREC) approved the research (GU Ref No. 2022/765) and informed consent was obtained from all human research participants. This research was developed with funding from the National Science Foundation (DEB-1716698), US Defense Advanced Research Projects Agency (DARPA PREEMPT D18AC00031) and US National Institute of Food and Agriculture (1015891). A.J.P. was supported by an Australian Research Council DECRA fellowship (DE190100710). The content of the information does not necessarily reflect the position or the policy of the US government, and no official endorsement should be inferred. We acknowledge the Biripi, Bundjalung, Butchulla, Dainggatti, Danggan Balun, Githabul, Gumbainggir, Kabi Kabi, Turrbal, Wakka Wakka, Widjabul Wia-bal, Yaegl, Yugambeh and Yuggera Ugarapul people, who are the Traditional Custodians of the land upon which this work was conducted.

**Author contributions** P.E. collected long-term empirical data and collated existing data. R.K.P., P.E. and A.J.P. wrote the first draft of the manuscript and P.E., R.K.P., A.J.P., P.J.H. and A.H. edited the manuscript. P.E., A.J.P., A.H., W.M. and R.K.P. wrote the Supplementary Information. A.H. conceptualized and implemented the Bayesian network model. All authors contributed to analysis of the data and production of the figures.

**Competing interests** The authors declare no competing interests.

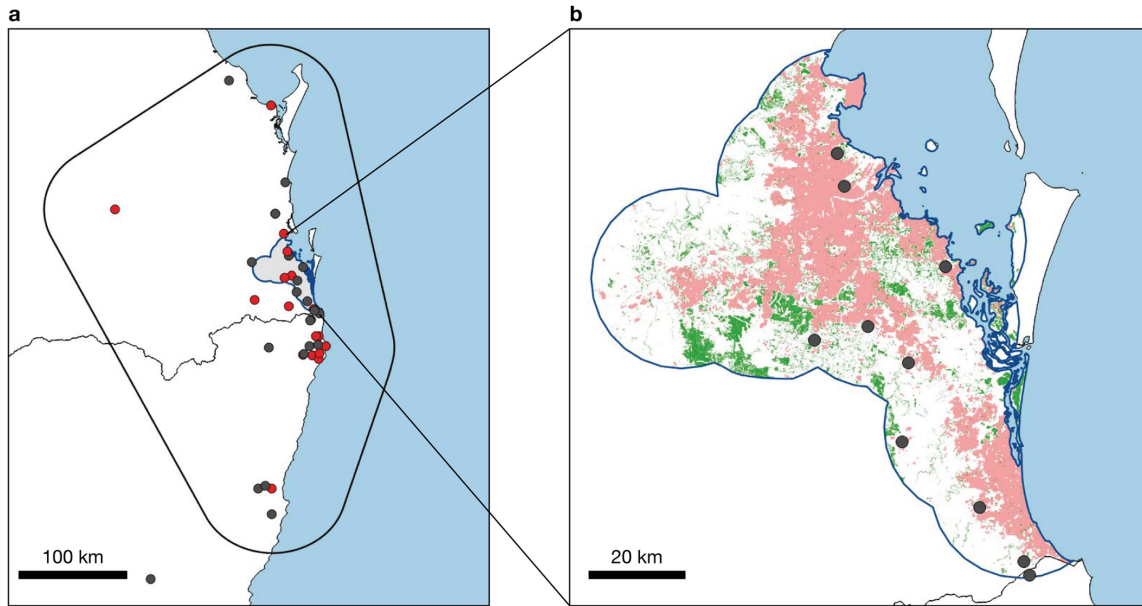
## Additional information

**Supplementary information** The online version contains supplementary material available at <https://doi.org/10.1038/s41586-022-05506-2>.

**Correspondence and requests for materials** should be addressed to Raina K. Plowright.

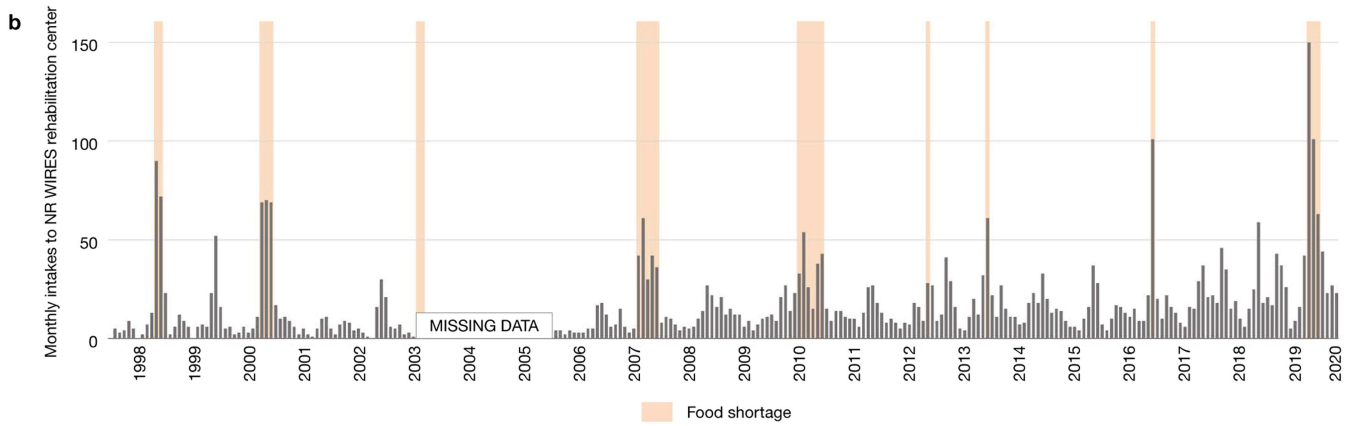
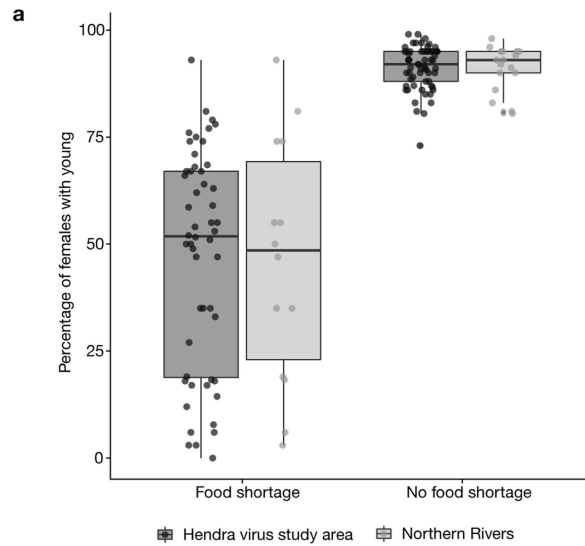
**Peer review information** Nature thanks DeeAnn Reeder and the other, anonymous, reviewer(s) for their contribution to the peer review of this work.

**Reprints and permissions information** is available at <http://www.nature.com/reprints>.



**Extended Data Fig. 1 | Boundaries of the Hendra virus study area and Southeast Queensland study area with locations of Hendra virus spillovers to horses indicated. (a)** The full study area with locations of subtropical Hendra virus spillovers (circles, Database A)<sup>12</sup>; **(b)** The far Southeast Queensland (SEQ) study area showing the Hendra virus spillovers documented within the

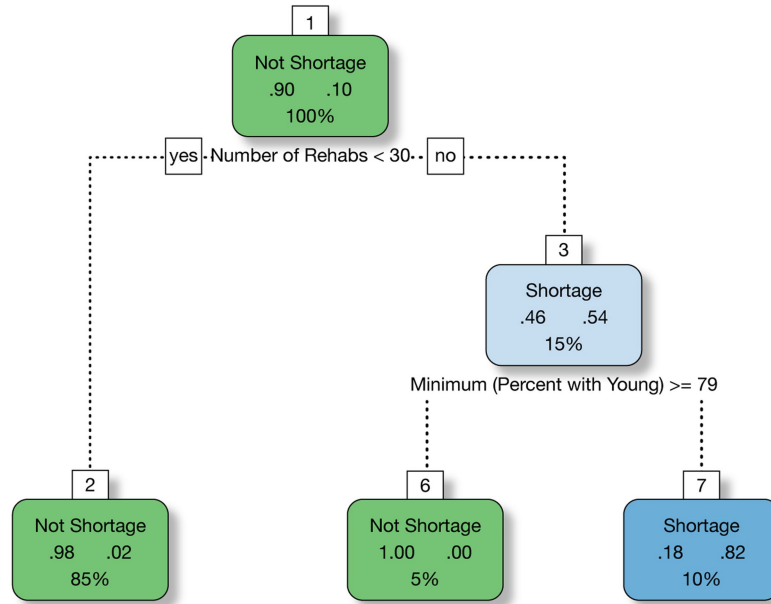
boundary (circles, Database A)<sup>12</sup>; and the 2018 distributions of built land use (light red, Supplementary Information 9) and extant winter foraging habitat for flying foxes (green, Supplementary Information 12). Base-maps were obtained from the Australian Bureau of Statistics Digital boundary files ([www.abs.gov.au](http://www.abs.gov.au)).



**Extended Data Fig. 2 | Measures of flying fox fitness identified as important proxies of food shortage in regression tree model. (a)** index of reproductive output: annual estimates of the percentage of adult females occupying roosts in the Northern Rivers (NR) region (light grey) and throughout the Hendra virus study area (black) carrying live young pre-weaning; data are grouped according to whether a period of nectar shortage was recorded by apiarists during the winter or spring associated with that birth cohort ( $n = 9$  years) versus cohorts when a nectar shortage was not recorded ( $n = 14$  years). Data acquired in years of food shortage were widely dispersed relative to highly clustered data acquired in years without food shortage. Patterns of data

distribution were consistent between the NR region and the full study area. Box plots show median values, upper and lower quartiles and all data points. **(b)** monthly counts of admissions to Northern Rivers WIREs wildlife rehabilitation center with months classified as nectar shortage by apiary data (indicated by orange bars). No intake records were available from June 2003 through December 2005. The bounds of the box correspond to the 25<sup>th</sup> and 75<sup>th</sup> percentiles, the middle dash is the median, and the whiskers extend to the largest value no further than 1.5 times the interquartile range from the 25<sup>th</sup> or 75<sup>th</sup> percentile.

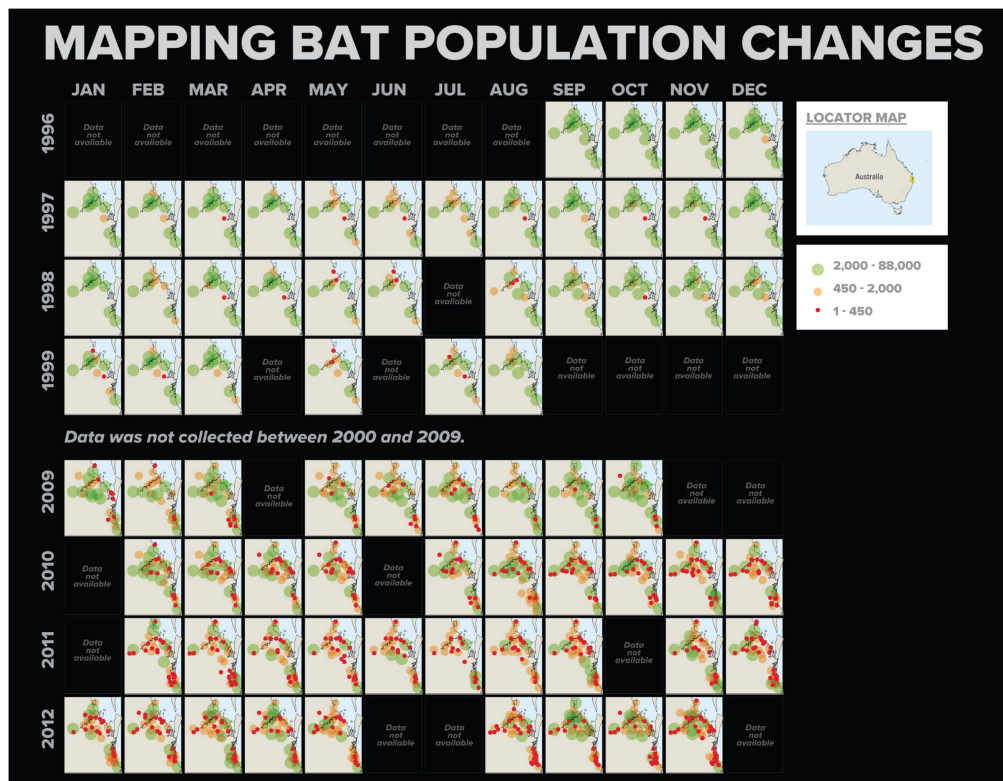




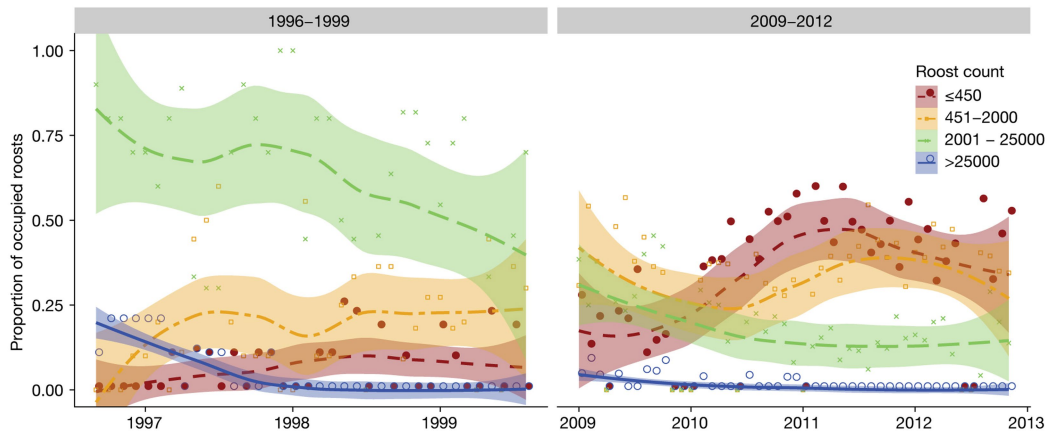
**Extended Data Fig. 3 | Regression tree fit for identifying flying fox food shortages (as assessed by absence or very low nectar production).** Food shortages were predicted when monthly flying fox intakes into wildlife

rehabilitation centers were  $\geq 30$  individuals and minimum proportion of female flying foxes with young pre-weaning was  $< 79\%$ .

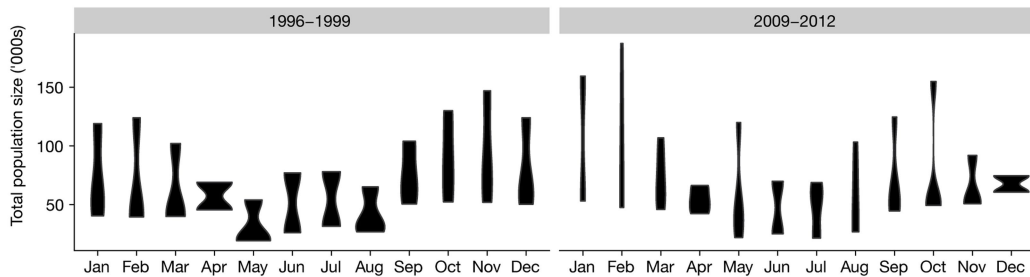
a



b

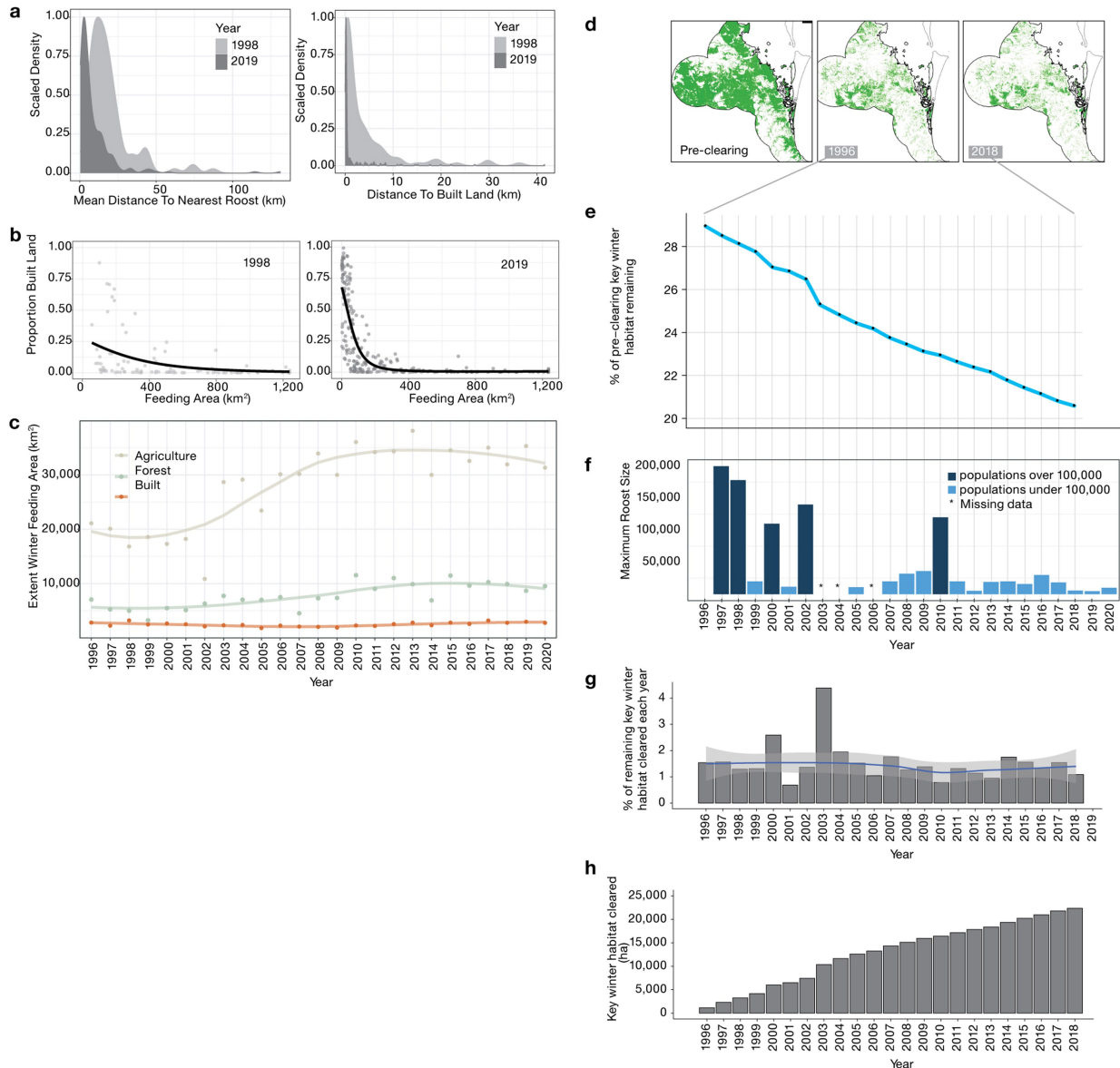


c



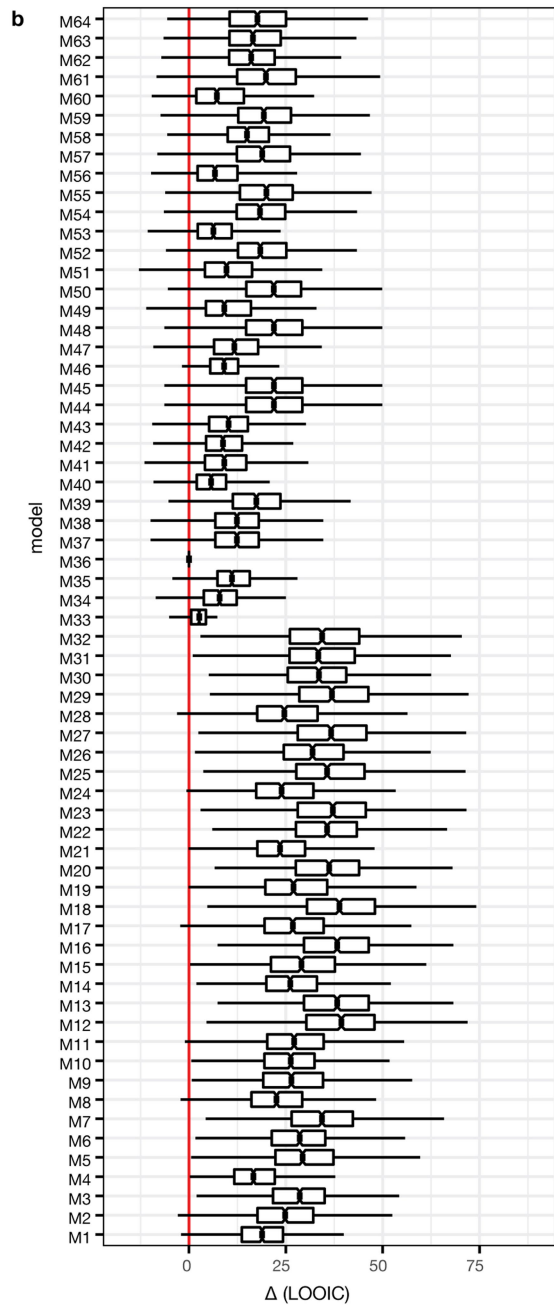
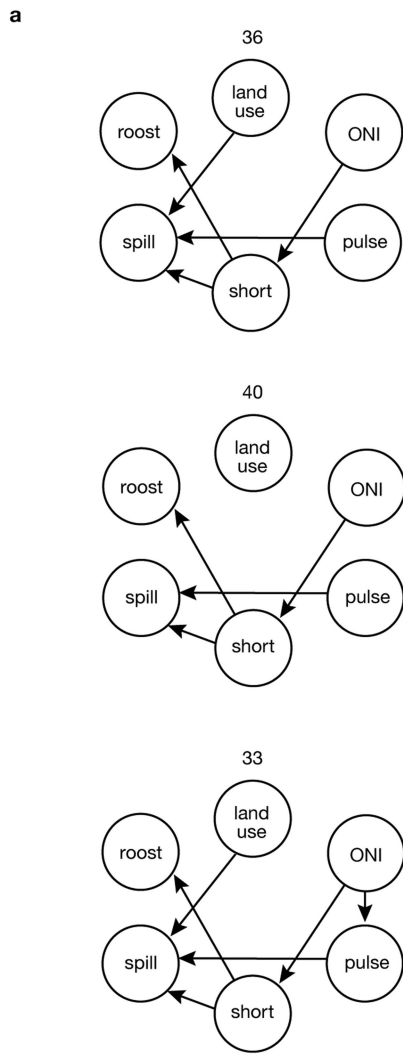
**Extended Data Fig. 4 | Changes through time in the number and estimated population size of roosts occupied by black flying foxes *Pteropus alecto* in the SEQ study area.** Censuses of roosts were conducted monthly in two time periods: T1 = 1996–1999 and T2 = 2009–2012. **(a)** Monthly maps of roost locations and population size grouped in three quantiles. The base-map was obtained from the Australian Bureau of Statistics Digital boundary files ([www.abs.gov.au](http://www.abs.gov.au)). **(b)** An additional population size category (>25,000) was

added to illustrate change in large roosts. The line is a LOESS best fit and gray shading indicates 95% confidence intervals. **(c)** Total population estimates of black flying foxes (all roosts combined) grouped by month and year and summarized in violin plots. The number and locations of roosts was stable in T1 ( $n = 12$ ) and increased from 34 to 80 in T2, although total estimates of black flying foxes in the study area remained stable.



**Extended Data Fig. 5 | Spatial and temporal changes in the roosting and foraging behaviors of *Pteropus* bats during the study period (1996–2019 comparisons); and coincident decline in the extent of winter habitat in the SEQ study area. (a)** Mean distance between nearest neighboring roosts and the distance between roosts and developed areas decreased. **(b)** Roost occupancy in built land in metropolitan centers increased; smaller foraging areas contained a higher proportion of urban land; **(c)** Annual change in the area of different land-cover types within the total winter foraging range of *P. alecto*. Data are the summed total of the area assigned to each land use type in the foraging areas of roosts occupied in winter. The total area of land in the winter foraging range increased over time, primarily as a result of expansion

into agricultural areas. Although the number of winter roosts in urban areas increased substantially, the total area of built land in combined foraging areas did not. **(d)** Distribution of key winter habitat in the southeast Queensland study area (SEQ): pre-clearing, at the start of the study in 1996 and at the end of the study in 2018. **(e)** Percentage of pre-clearing winter habitat remaining (note that the y-axis is compressed). **(f)** Abundance of bats in the largest winter roosts within SEQ. Aggregations  $\geq 100,000$  were common pre-2005, rare after 2005, and none occurred from 2011 to 2020. **(g)** Annual rate of clearing of key winter habitat in the SEQ study area 1996–2018, the line is a LOESS best fit. Gray shading indicates 95% confidence intervals and **(h)** Cumulative area cleared (ha).

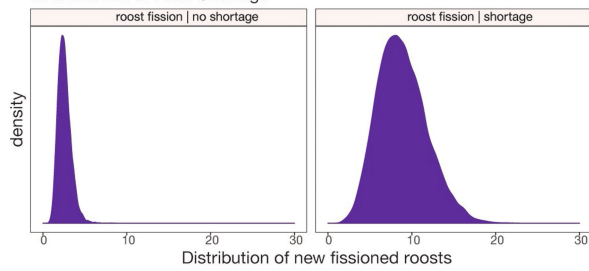


**Extended Data Fig. 6 | A total of 64 different plausible network models were assessed using expected log pointwise predictive density (ELPD) and leave-one-out (LOO) cross-validation for predictive validation. (a)** The figure contains the best network, Model 36 (top), plus all of the other networks within 10 leave-one-out information criteria (LOOIC) units of Model 36. The node labels are abbreviated; spill is spillover, roost is roost fissioning, land use is the land use type at the roost level, short is a food shortage in the previous year, pulse is a winter flowering pulse, and ONI is elevated ONI over

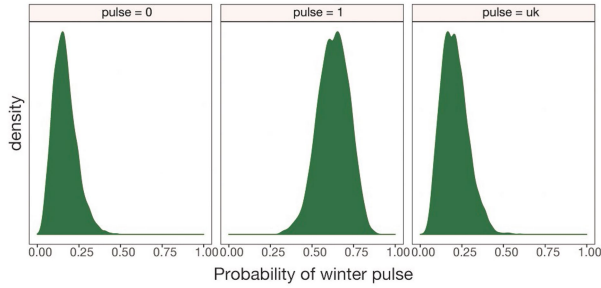
0.8 two years prior. **(b)** Distribution of LOOIC values relative to Model 36. For each model, the boxplots ( $n = 1000$  simulations) show the distribution of the difference in LOOIC. M36 is the favored model as the median, and at least the first quartile, are positive for all other models. The bounds of the box correspond to the 25<sup>th</sup> and 75<sup>th</sup> percentiles, the middle dash is the median, and the whiskers extend to the largest value no further than 1.5 times the interquartile range from the 25<sup>th</sup> or 75<sup>th</sup> percentile.

# Article

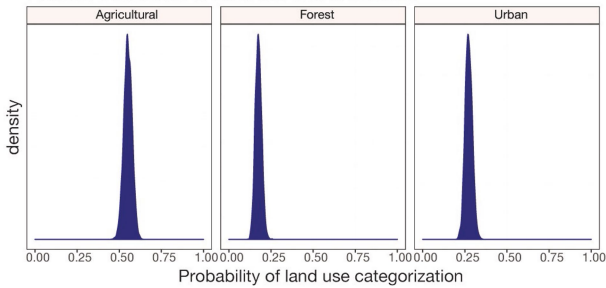
**a** Posterior Distribution of Average Number of New Fissioned Roosts as a function of Food Shortage



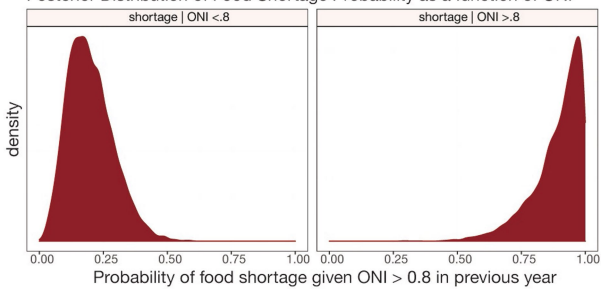
**b** Posterior Distribution of Winter Flowering Pulse



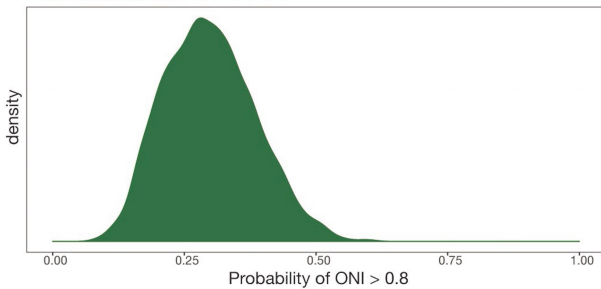
**c** Posterior Distribution of Land Use Characterization



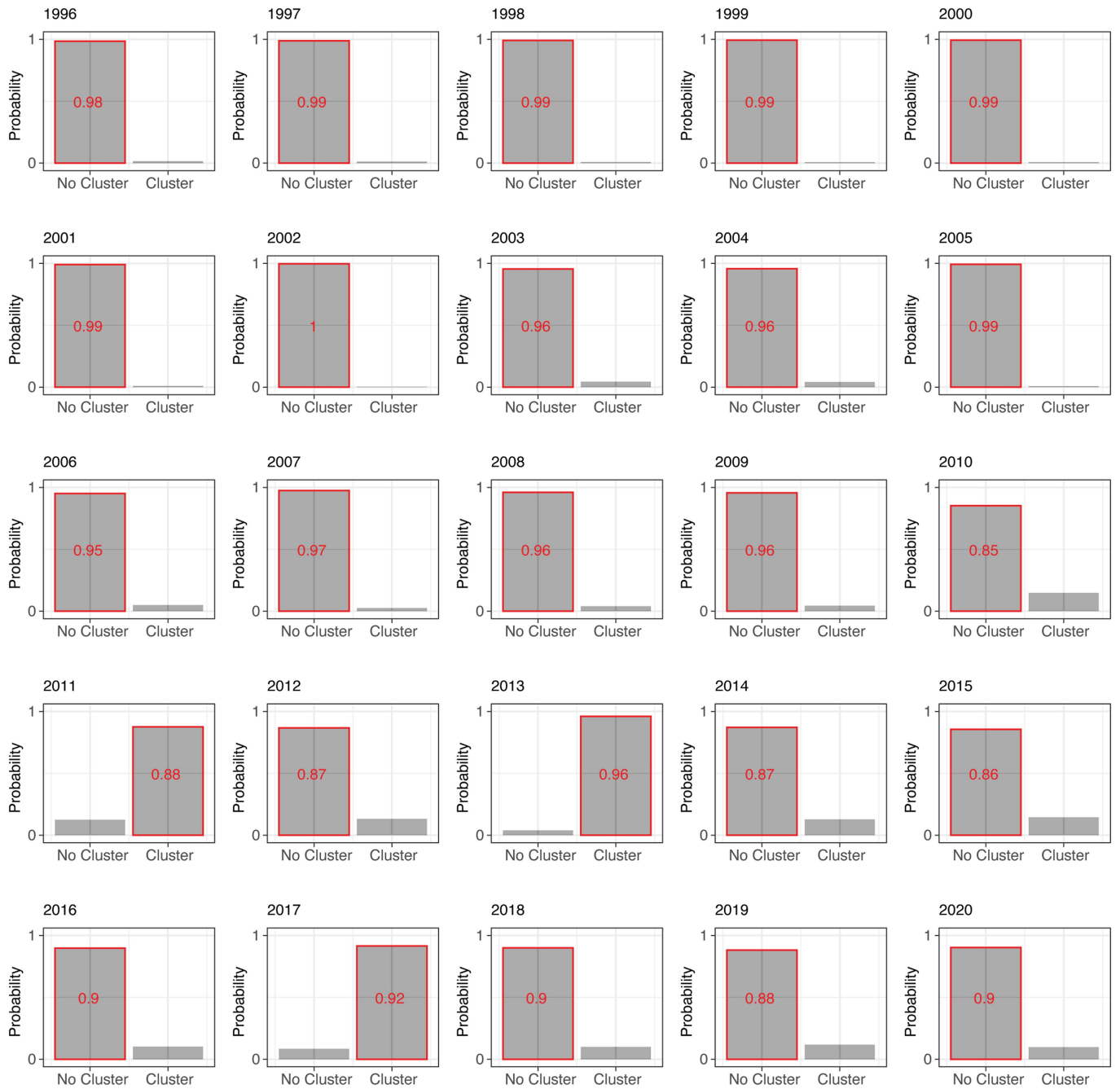
**d** Posterior Distribution of Food Shortage Probability as a function of ONI



**e** Posterior Distribution of ONI > 0.8

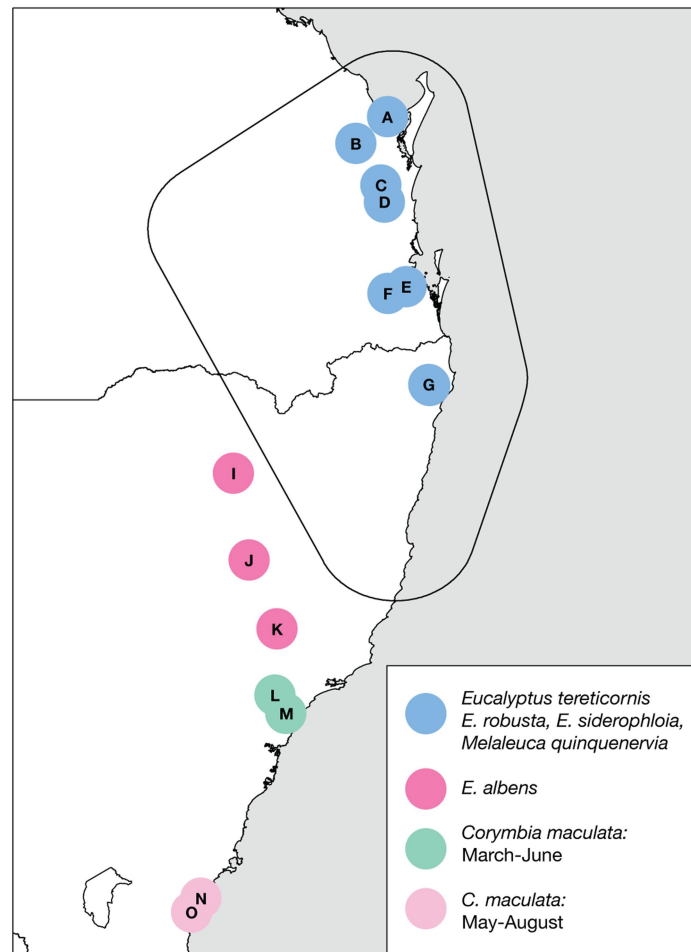


**Extended Data Fig. 7 | Posterior distributions for model parameters in Bayesian Network Model. (A)** posterior distribution of new fissioned roosts, conditional on food shortage events. **(B)** posterior distribution for the probability of a winter flower pulse. **(C)** posterior distribution for the probability of a roost having the three different land use characteristics. **(D)** posterior distribution for the probability of a food shortage given elevated ONI values. **(E)** the posterior distribution for the probability of elevated ONI values.



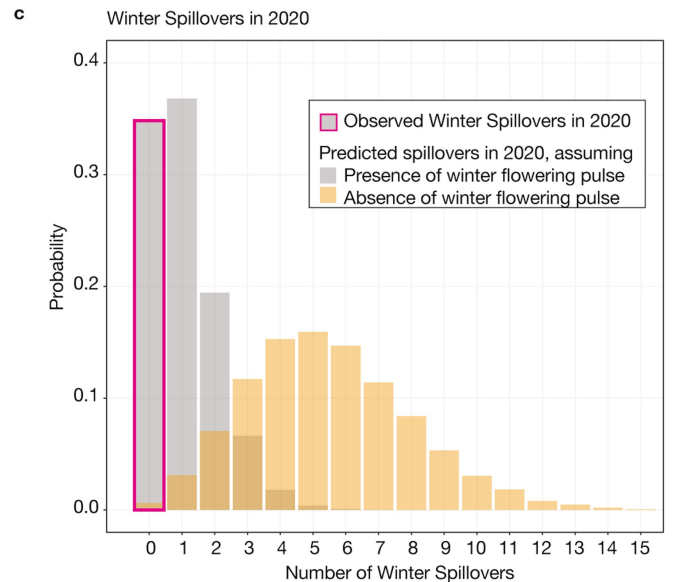
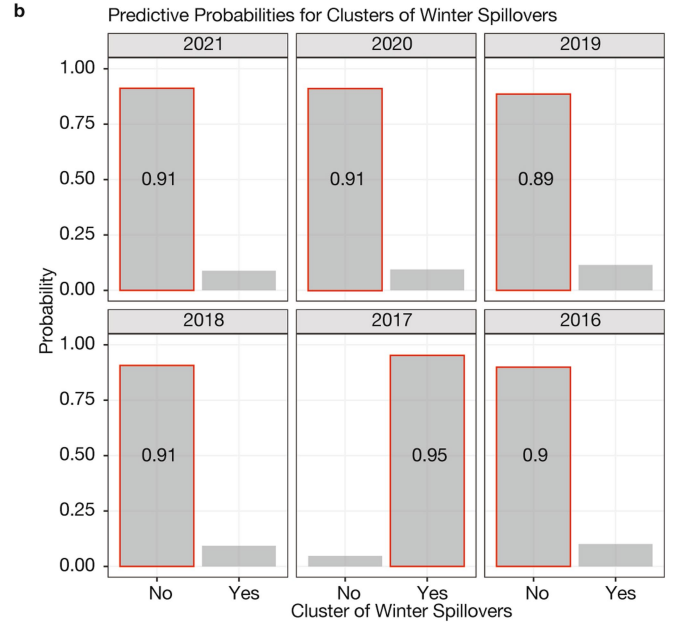
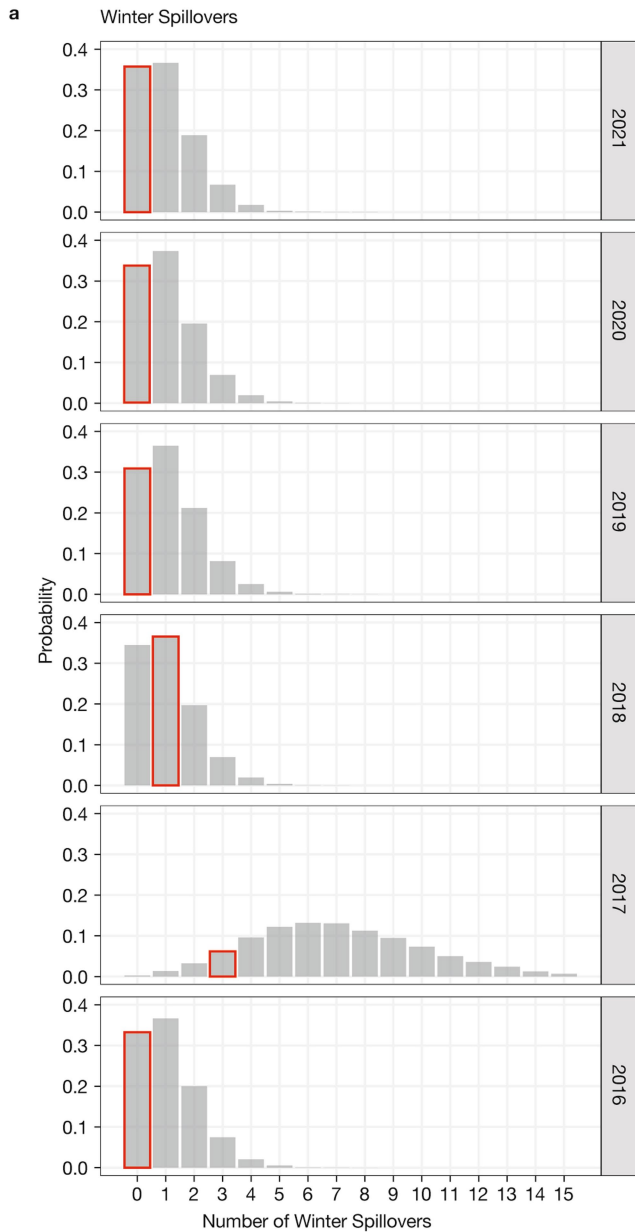
**Extended Data Fig. 8 | Output from 5-fold cross validation study to assess the ability of our model to predict spillover clusters.** The red bars correspond to whether a cluster of spillovers was observed in that year and the grey bars and number correspond to predicted probabilities. For a given year,

root-level predictions are made using models fit on roots-year combinations from other folds. This approach provides strong evidence of the predictive ability of the model framework as it predicts, with high certainty, the presence or absence of clusters of spillovers in all 25 years.



**Extended Data Fig. 9 | The locations of pulses of winter flowering in southeast Australia 1997–2020 as identified by aggregations  $\geq 100,000$  of nomadic grey-headed flying foxes and black flying foxes; and the winter flowering diet plants that occur in local vegetation communities. Winter habitat in the Hendra virus study area primarily comprises a mix of four**

species, two single species occur in other regions. Latitudinal variations in the flowering phenology of *Corymbia maculata* are indicated. Dates are provided in Dataset J<sup>32</sup>, a key to roost names is provided in Supplementary Table 5B. The base-map was obtained from the Australian Bureau of Statistics Digital boundary files ([www.abs.gov.au](http://www.abs.gov.au)).



**Extended Data Fig.10 | Predicted probabilities for total number and clusters of winter spillovers. (a)** Predicted probability for total number of winter spillovers (grey bars) and observed number of winter spillovers (red outlines). **(b)** Predicted probability for a cluster of spillovers (grey bars, defined as three or more spillovers) and the observed presence or absence of a cluster of winter spillovers (red outlines). In both figures, predictions are made using all observed data up to that time, but information from future years is not incorporated into predictions. The period of 2016 through 2021 was chosen for probabilistic predictions because enough preceding data allowed predictions. Food shortages were seen preceding years 2017 and 2020, but only the year

2017 included both a food shortage and a lack of a winter flowering pulse. All the predictions are supported by the realized data, which fall in higher mass parts of the distributions in (a) and align with predictions with high predicted probabilities in (b). (c) Predictive distribution of the total number of spillovers in winter 2020, following a food shortage in 2019. The grey bars indicate the spectrum of probabilistic predictions for spillover, given a winter flowering pulse. A winter flowering pulse did occur in early July 2020 and no winter spillovers were observed (pink outlined bar). Had no flowering pulse occurred, we predicted many more spillover events (yellow bars).



## Reporting Summary

Nature Portfolio wishes to improve the reproducibility of the work that we publish. This form provides structure for consistency and transparency in reporting. For further information on Nature Portfolio policies, see our [Editorial Policies](#) and the [Editorial Policy Checklist](#).

### Statistics

For all statistical analyses, confirm that the following items are present in the figure legend, table legend, main text, or Methods section.

n/a Confirmed

- The exact sample size ( $n$ ) for each experimental group/condition, given as a discrete number and unit of measurement
- A statement on whether measurements were taken from distinct samples or whether the same sample was measured repeatedly
- The statistical test(s) used AND whether they are one- or two-sided  
*Only common tests should be described solely by name; describe more complex techniques in the Methods section.*
- A description of all covariates tested
- A description of any assumptions or corrections, such as tests of normality and adjustment for multiple comparisons
- A full description of the statistical parameters including central tendency (e.g. means) or other basic estimates (e.g. regression coefficient) AND variation (e.g. standard deviation) or associated estimates of uncertainty (e.g. confidence intervals)
- For null hypothesis testing, the test statistic (e.g.  $F$ ,  $t$ ,  $r$ ) with confidence intervals, effect sizes, degrees of freedom and  $P$  value noted  
*Give  $P$  values as exact values whenever suitable.*
- For Bayesian analysis, information on the choice of priors and Markov chain Monte Carlo settings
- For hierarchical and complex designs, identification of the appropriate level for tests and full reporting of outcomes
- Estimates of effect sizes (e.g. Cohen's  $d$ , Pearson's  $r$ ), indicating how they were calculated

*Our web collection on [statistics for biologists](#) contains articles on many of the points above.*

### Software and code

Policy information about [availability of computer code](#)

Data collection

Data analysis https://doi.org/10.7298/rdb-cy49 and Eby, Peggy, Alison Peel, Andrew Hoegh, Wyatt Madden, John Giles, Peter Hudson, and Raina Plowright (2022) Data and figure from Pathogen spillover driven by rapid changes in bat ecology. Bayesian network model [Dataset]. Cornell University eCommons Digital Repository. <https://doi.org/10.7298/y0nr-e545>

For manuscripts utilizing custom algorithms or software that are central to the research but not yet described in published literature, software must be made available to editors and reviewers. We strongly encourage code deposition in a community repository (e.g. GitHub). See the Nature Portfolio [guidelines for submitting code & software](#) for further information.

### Data

Policy information about [availability of data](#)

All manuscripts must include a [data availability statement](#). This statement should provide the following information, where applicable:

- Accession codes, unique identifiers, or web links for publicly available datasets
- A description of any restrictions on data availability
- For clinical datasets or third party data, please ensure that the statement adheres to our [policy](#)

Data Availability

The datasets generated and analyzed during the current study are available in the Cornell University eCommons Digital Repository or they are available as open access files. The URLs are provided in the Data Index <https://doi.org/10.7298/pjib-3360>, with the exception of records from commercial apiarists (Supplementary Information Section 7) that are constrained by commercial in-confidence considerations. Dataset URLs: Dataset A: <https://doi.org/10.7298/3dbp-t721>; Dataset B: <https://doi.org/10.7298/kdht-sp38>; Dataset C: <https://doi.org/10.7298/ajmw-mp18>; Dataset E: <https://doi.org/10.7298/tb5p-dr98>; Dataset F: <https://doi.org/10.7298/j3q2-gw32>; Dataset G: <https://doi.org/10.7298/3vha-5m37>; Dataset I: <https://doi.org/10.7298/x71e-c660>; Dataset J: <https://doi.org/10.7298/rmh-zc23>.

## Field-specific reporting

Please select the one below that is the best fit for your research. If you are not sure, read the appropriate sections before making your selection.

Life sciences  Behavioural & social sciences  Ecological, evolutionary & environmental sciences

For a reference copy of the document with all sections, see [nature.com/documents/nr-reporting-summary-flat.pdf](https://nature.com/documents/nr-reporting-summary-flat.pdf)

## Ecological, evolutionary & environmental sciences study design

All studies must disclose on these points even when the disclosure is negative.

Study description	This work brings together multiple datasets that were collected over 25 years. The Data Index supplies a summary of datasets and how to access them: Eby, P. et al. Data from Pathogen spillover driven by rapid changes in bat ecology. Data Index. Cornell University eCommons Digital Repository. doi: <a href="https://doi.org/10.7298/pjib-3360">https://doi.org/10.7298/pjib-3360</a> (2022).
Research sample	Extensive data collection on spillover, flying fox population dynamics, flying fox movement, Oceanic Nino Index, apiary records, animal intakes into rehabilitation organisations, reproductive output, foraging data, foraging area characteristics (land cover and land use), winter flowering pulses (bat aggregations), habitat clearing. See Data Index (above)
Sampling strategy	n/a
Data collection	See Data Index for the sources of data (doi: <a href="https://doi.org/10.7298/pjib-3360">https://doi.org/10.7298/pjib-3360</a> ). The field data was collected by P. Eby.
Timing and spatial scale	See Data Index for the temporal and spatial scale associated with each dataset (doi: <a href="https://doi.org/10.7298/pjib-3360">https://doi.org/10.7298/pjib-3360</a> ).
Data exclusions	The extent of the study area was defined after the 2011 Hendra virus outbreaks in the subtropics. The study area encompassed all detected Hendra virus spillovers in the subtropics at that time, including the feeding areas of the associated flying fox roosts. This is described in the supplementary information and supplementary methods. Ongoing data collection was focused within this study area. See Supplementary Information.
Reproducibility	No experiments were performed.
Randomization	n/a
Blinding	n/a
Did the study involve field work?	<input checked="" type="checkbox"/> Yes <input type="checkbox"/> No

## Field work, collection and transport

Field conditions	Observations of reproductive output were performed during the same week each year; see supplementary methods and information. Census and population counts of flying fox populations were performed.
Location	Subtropical Australia, see Supplementary Table 2.
Access & import/export	n/a
Disturbance	n/a

## Reporting for specific materials, systems and methods

We require information from authors about some types of materials, experimental systems and methods used in many studies. Here, indicate whether each material, system or method listed is relevant to your study. If you are not sure if a list item applies to your research, read the appropriate section before selecting a response.

## Materials &amp; experimental systems

## Methods

n/a	Involvement
<input checked="" type="checkbox"/>	<input type="checkbox"/> Antibodies
<input checked="" type="checkbox"/>	<input type="checkbox"/> Eukaryotic cell lines
<input checked="" type="checkbox"/>	<input type="checkbox"/> Palaeontology and archaeology
<input checked="" type="checkbox"/>	<input type="checkbox"/> Animals and other organisms
<input type="checkbox"/>	<input checked="" type="checkbox"/> Human research participants
<input checked="" type="checkbox"/>	<input type="checkbox"/> Clinical data
<input checked="" type="checkbox"/>	<input type="checkbox"/> Dual use research of concern

n/a	Involvement
<input checked="" type="checkbox"/>	<input type="checkbox"/> ChIP-seq
<input checked="" type="checkbox"/>	<input type="checkbox"/> Flow cytometry
<input checked="" type="checkbox"/>	<input type="checkbox"/> MRI-based neuroimaging

## Human research participants

Policy information about [studies involving human research participants](#)

## Population characteristics

Participants in the nectar monitoring research met at least one of the following criteria:

1) apiarists that manage substantial enterprises (hundreds of hives); 2) active members of industry support groups (federal, state and local industry associations, government advisory personnel) and 3) honey packers to whom apiarists sell their products. No other characteristics were considered

## Recruitment

Recruitment occurred in the following steps. Potential participants were identified via the recommendations of: office holders of federal, state and local industry support organizations, government advisory personnel, and existing participants. Researchers contacted potential participants directly to confirm they met criteria for participation (above) and agreed to provide information on nectar production as set out in the methods of the study. Finally, participants were required to provide informed consent under the Griffith University Human Research Ethics Committee. approval (below).

## Ethics oversight

The Griffith University Human Research Ethics Committee (GUHREC) approved the study protocol (GU Ref No: 2022/765)

Note that full information on the approval of the study protocol must also be provided in the manuscript.