





Article

Ciliated Cells in Ovarian Cancer Decrease with Increasing Tumor Grade and Disease Progression

Michael T. Richardson ^{1,†} , Maria Sol Recouvreux ^{1,†} , Beth Y. Karlan ^{1,2} , Ann E. Walts ³
and Sandra Orsulic ^{1,2,4,*} 

¹ Department of Obstetrics and Gynecology, David Geffen School of Medicine, University of California Los Angeles, Los Angeles, CA 90095, USA

² Jonsson Comprehensive Cancer Center, University of California Los Angeles, Los Angeles, CA 90095, USA

³ Department of Pathology and Laboratory Medicine, Cedars-Sinai Medical Center, Los Angeles, CA 90048, USA

⁴ VA Greater Los Angeles Healthcare System, Los Angeles, CA 90095, USA

* Correspondence: sorsulic@mednet.ucla.edu

† These authors contributed equally to this work.

Abstract: Ciliated cell markers expressed in epithelial ovarian cancers (EOC) are associated with improved survival. We examined the distribution of cells expressing ciliated cell markers in various EOC histologies and stages. Immunohistochemistry and/or multiplex immunofluorescence were used to determine the expression of FOXJ1 and/or CAPS (ciliated cell markers) in tissue microarrays including 4 normal fallopian tubes, 6 normal endometria, 16 cystadenomas, 25 borderline tumors, 21 low-grade carcinomas, and 118 high-grade carcinomas (HGSOC) (46 serous, 29 endometrioid, 30 clear cell, 13 mucinous). CAPS+ cells were observed in normal fallopian tubes and endometria and in ~85% of serous benign and borderline tumors and low-grade carcinomas but only in <40% of HGSOC. mRNA data from an independent cohort showed higher FOXJ1 and CAPS expression in serous borderline tumors and low-grade carcinomas compared to HGSOC. In HGSOC, ciliated cell-positive markers were observed in 52% primary tumors compared to 26% of patient-matched synchronous metastases, and 24% metachronous metastases ($p = 0.009$). mRNA data from an independent HGSOC cohort showed lower levels of CAPS in metastases than in primary tumors ($p = 0.03$). Overall, the study revealed that ciliated cells were less common in mucinous EOC, the percentage of ciliated cell marker-positive cases decreased with increasing grade, and the percentage of ciliated cells decreased in HGSOC metastases compared to patient-matched primary tumors.

Keywords: fallopian tube; ciliated cells; secretory cells; ovarian cancer; serous; mucinous; endometrioid; clear cell; CAPS; FOXJ1



Citation: Richardson, M.T.; Recouvreux, M.S.; Karlan, B.Y.; Walts, A.E.; Orsulic, S. Ciliated Cells in Ovarian Cancer Decrease with Increasing Tumor Grade and Disease Progression. *Cells* **2022**, *11*, 4009. <https://doi.org/10.3390/cells11244009>

Academic Editors: Anahid Jewett and Kawaljit Kaur

Received: 24 October 2022

Accepted: 8 December 2022

Published: 11 December 2022

Publisher's Note: MDPI stays neutral with regard to jurisdictional claims in published maps and institutional affiliations.



Copyright: © 2022 by the authors. Licensee MDPI, Basel, Switzerland. This article is an open access article distributed under the terms and conditions of the Creative Commons Attribution (CC BY) license (<https://creativecommons.org/licenses/by/4.0/>).

1. Introduction

In the United States, nearly 20,000 women are diagnosed with ovarian cancer annually and 12,000 succumb to their disease [1]. Epithelial ovarian cancer (EOC) is a heterogeneous disease that includes serous, endometrioid, mucinous and clear cell histologic subtypes. These histologic subtypes are further divided into high-grade, low-grade, and borderline (previously termed low-malignant potential or LMP) tumors [2]. High-grade serous ovarian cancer (HGSOC) which accounts for more than two-thirds of ovarian cancer deaths [3] was initially thought to originate from the ovarian surface epithelium or peritoneum [4,5]. However, more recent studies indicate tumor origin from the secretory cells at the fimbriated end of the fallopian tube where precursor lesions, including serous tubal intraepithelial carcinoma (STIC) and a TP53 mutation signature, are typically identified [3,6,7].

The fallopian tube epithelium is composed primarily of secretory cells and ciliated cells. Whereas the secretory cells produce the liquid film which overlays the tubal epithelium and are more numerous in all segments of the tube [8–10], ciliated cells help

transport the ovum through the tube and are more numerous in the fimbriated end of the tube, decreasing in number toward the uterus [11]. Ciliated cells are also thought to aid in follicular fluid clearance, thereby possibly reducing the genotoxic stress that follows ovulation [4]. Ciliated cells are also present in the endometrium (both eutopic endometrium and endometriosis) [12] and in some ovarian cortical inclusion cysts (CIC) [13–15].

Relatively little is known about the role of ciliated cells in the development of EOC. Ciliated cell dysfunction has been proposed to enable DNA damage and carcinogenesis [16,17], although the mechanism is unknown. The presence of ciliated cell markers has also been shown to be associated with improved survival in EOC [18].

We sought to better understand the relationships between ciliated cells and the biologic behavior of various benign and malignant epithelial ovarian tumors and histologies. We utilized patient tumor tissue microarrays (TMAs), immunohistochemistry (IHC) for ciliated cell marker-positive (FOXJ1 and/or CAPS) cells, multiplex immunofluorescence (mIF) for ciliated cell marker-positive (CAPS, TUBB4) cells and secretory cell marker (PAX8), and mRNA expression profiles to characterize the distribution of ciliated and secretory cell markers in normal fallopian tubes and endometria, benign and borderline ovarian tumors, and various histologic subtypes and grades of EOC. We also utilized a TMA of patient-matched tumors to compare the presence of ciliated cell markers in primary, synchronous metastatic, and metachronous metastatic/recurrent HGSOC.

2. Materials and Methods

2.1. TMAs

Our study was approved by the UCLA and Cedars-Sinai Medical Center Institutional Review Boards. We utilized commercial and in-house generated TMAs with de-identified formalin-fixed, paraffin-embedded (FFPE) patient tissue samples and associated clinicopathologic data (age, histologic subtype, malignant potential, grade, and stage). Four TMAs with non-overlapping patient tumors were used: TMA1 (OV991 Ovarian Tumor Series; US Biomax, Inc, Derwood, MD, USA; a single 1.2 mm core/case), TMA2 (CJ3 Ovary Cancer; Super Bio Chips; a single 2 mm core/case), TMA3 (CHTN OvCa2 Ovarian Carcinoma Survey; four 0.6 mm cores/case), and TMA4 (Ovarian Cancer Histologic Subtypes; in-house generated TMA; two 1.5 mm cores/case). Table S1 shows all cases that were analyzed after excluding cases with missing cores or insufficient tissue and cases irrelevant to this study.

We also generated a “HGSOC Progression” TMA comprising triplicate 1 mm cores of HGSOE from 42 patients. In this TMA, each patient was represented by 3 tumors: primary tumor, concurrent (synchronous) metastasis, and recurrent (metachronous) metastasis. The primary tumors and concurrent/synchronous metastases were chemotherapy-naïve while recurrent/metachronous metastases were obtained following treatment (usually 6 cycles of platinum/taxane combination chemotherapy).

2.2. Multiplex Immunofluorescence (mIF)

Opal mIF staining was performed by the UCLA Translational Pathology Core Laboratory based on tyramide signal amplification (TSA). The Opal Polaris 7-Color Automation IHC Kit (Cat#NEL871001KT, Akoya Biosciences, Marlborough, MA, USA) was used with ER2 30 min retrieval and 1 h room temperature incubation. Staining was performed consecutively using each of the following antibodies: Paired Box 8 (PAX8, prediluted rabbit polyclonal antibody 363A-18, Cell Marque, Rocklin, CA, USA), calyphosine (CAPS, Atlas Antibodies Cat#HPA043520, RRID:AB 10964138, 1:1000 dilution, Sigma-Aldrich, St. Louis, MO, USA), and tubulin beta 4 (TUBB4, Sigma-Aldrich, St. Louis, MO, USA), monoclonal anti-acetylated tubulin T7451, 1:500 dilution), and 4',6-diamidino-2-phenylindole (DAPI) (Cat# SKU FP1490, Akoya Biosciences, Marlborough, MA, USA). The slides were scanned at 20X with the Vectra Polaris scanner (Akoya Biosciences, Marlborough, MA, USA) and data from the multispectral camera were analyzed using the imaging InForm automated image analysis software (Akoya Biosciences, Marlborough, MA, USA). Images were scored at 10X

magnification using Phenochart whole slide viewer (Akoya Biosciences, Marlborough, MA, USA).

2.3. Immunohistochemistry (IHC)

IHC was performed by the UCLA Translational Pathology Core Laboratory using the Leica Bond RX processor based on Protocol F using Bond Polymer Refine Detection kit (Cat#DS9800, Leica Biosystems, Nussloch, Germany), ER2 buffer (BOND Epitope Retrieval Solution 2, Leica Biosystems, Cat#AR9640), DakoCytomation Envision System Labelled Polymer HRP anti rabbit (Agilent, Santa Clara, CA, USA, K4003) and antibodies against FOXJ1 (Sigma-Aldrich, St. Louis, MO, USA, Atlas Antibodies Cat#HPA005714, RRID:AB_1078902, 1:100 dilution) and CAPS (Sigma-Aldrich, Atlas Antibodies Cat#HPA043520, RRID:AB_10964138, 1:1000). Hematoxylin was used as the counterstain. The slides were scanned at 40X with the Aperio ScanScope AT (Aperio, Vista, CA, USA).

2.4. Scoring and Interpretation

The percentage of CAPS+ cells in different stages of ovarian cancer progression represented in TMAs 1–4 was evaluated by mIF. CAPS, TUBB4, and DAPI channels were used for scoring while the PAX8 channel was turned off to facilitate scoring of CAPS+ cells. Missing cores and cores containing <50 epithelial cells were excluded from analysis. For TMA3 (four adjacent cores per case) and TMA4 (two adjacent cores per case), all cores/case were scored as one contiguous sample. Percentage of CAPS+ cells in all epithelial cells per case was estimated by eye in increments of 10 in 10X Phenochart viewer images. Cases containing >5 CAPS+ cells but <1% of CAPS+ cells per case were scored as 1%. Cases without CAPS+ cells or with <5 CAPS+ cells per case were scored as 0%.

Since HGSOV cases typically contained no or only a few ciliated cell marker-positive cells, which could be missed by either FOXJ1 or CAPS staining, three non-consecutive “HGSOV Progression” TMA sections were stained using IHC for FOXJ1, IHC for CAPS, and mIF for CAPS. A case was considered positive when >5 cells in one or more cores stained positive by at least one of the three staining methods. The three methods yielded similar scores. Re-review of the cores with discrepant results revealed that positive cells had been undercounted by one or two of the three methods because the tissue containing positive cells was folded or damaged in individual TMA sections.

2.5. Transcriptome Dataset

The Ovarian Cancer Database of Cancer Science Institute Singapore, CSIOVDB (<http://csiovdb.mc.ntu.edu.tw/CSIOVDB.html>, accessed on 22 May 2022) is a transcriptomics database of 3431 human ovarian neoplasms, including serous, endometrioid, mucinous, and clear cell carcinomas, and serous-LMP (borderline) tumors, and mucinous-LMP (borderline) tumors [19]. Expression levels of FOXJ1 and CAPS (ciliated cell markers) and PAX8 (a secretory cell marker) were plotted using the CSIOVDB online tool, comparing ovarian tumor histology and malignant potential.

2.6. Statistical Analyses

mRNA expression levels, measured in mean and quantiles, were compared using the Mann–Whitney Test. CAPS+ expression between histology was determined with Chi-squared testing. A *p*-value of 0.05 was considered significant.

3. Results

3.1. Ciliated Cells Are Frequently Present in Ovarian Cystadenomas, Borderline Tumors, and Low-Grade Carcinomas

To validate FOXJ1 and CAPS antibodies as markers of ciliated cells, we assessed their localization by IHC (FOXJ1) and mIF (CAPS) in normal fallopian tubes and proliferative endometria. In ciliated cells from both sites, FOXJ1 was expressed in the nucleus

(Figure 1A,C), CAPS was present in all cellular compartments including at the base of cilia, and tubulin highlighted intracellular skeletal structures and cilia (Figure 1B,D).

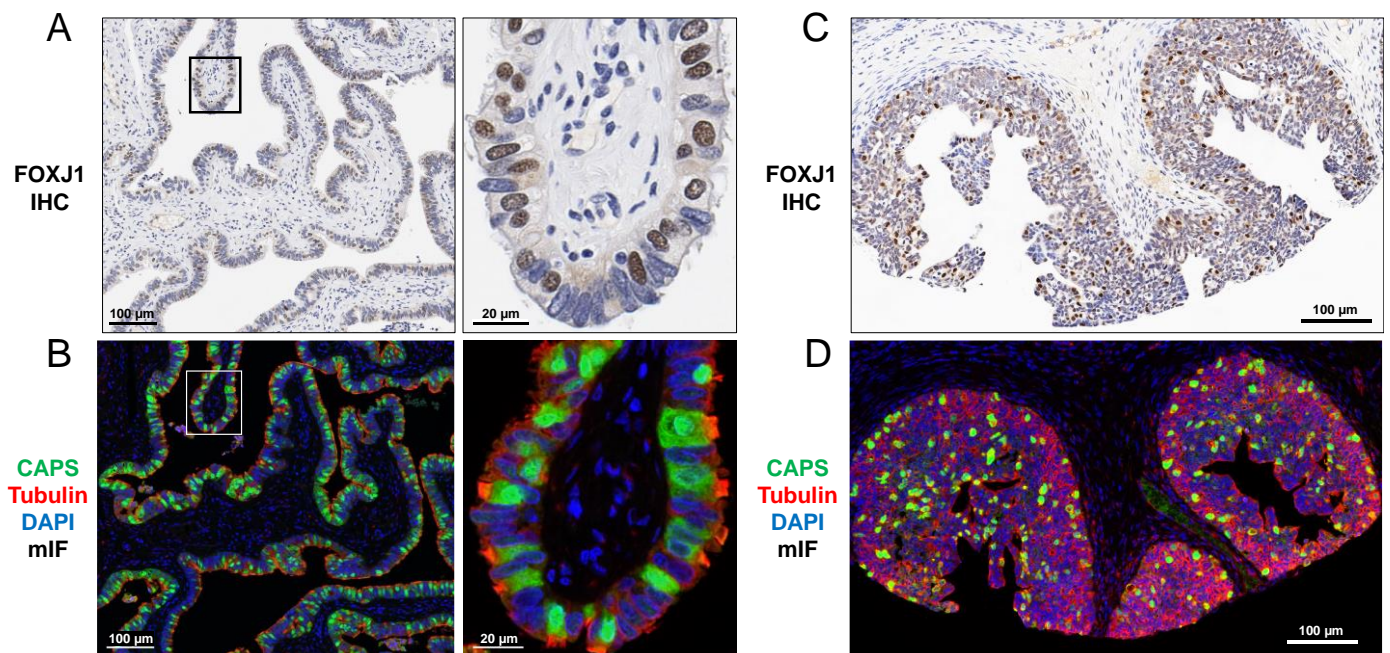


Figure 1. Ciliated cell markers FOXJ1 (IHC) and CAPS (mIF) in (A,B) normal fallopian tube and (C,D) proliferative endometrium. FOXJ1 shows nuclear staining (A,C) while CAPS shows diffuse intracellular staining (B,D). TUBB4 stains the cytoskeleton including base of cilia (B,D). Images (left) are shown at higher magnification (right). (A,C) Hematoxylin counterstain. (B,D) DAPI counterstain.

In ovarian cystadenomas, borderline tumors, and low-grade carcinomas, CAPS+ cells were typically associated with easily recognized cilia (Figure 2A–C) while cilia were rarely recognizable in high-grade carcinomas (Figure 2D–F). In ovarian high-grade carcinomas, even in the absence of distinct cilia, it was clear that CAPS+ cells did not show nuclear staining for PAX8 and thus were immunophenotypically distinct from the PAX8+ carcinoma cells (Figure 3).

While CAPS+ cells were detected in approximately 85% of serous cystadenomas, borderline tumors, and low-grade carcinomas, they were detected in <40% of HGSOCs. The average percentage of CAPS+ cells decreased with increasing tumor grade (40% in benign serous cystadenomas, 31.54% in serous borderline tumors, 18.86% in low-grade serous carcinomas, and 2.7% in HGSOCs (Figure 2A–D and Table 1). Among 39 mucinous tumors (9 benign, 12 borderline, 5 low-grade carcinomas, and 13 high-grade carcinomas), only one benign cystadenoma (11.11%) and one high-grade carcinoma (7.69%) had CAPS+ cells. In both cases, CAPS+ cells comprised approximately 20% of total epithelial cells (Table S1). In endometrioid carcinomas, CAPS+ cells were present in 8 of 9 (88.88%) low-grade and 9 of 29 (31.03%) high-grade carcinomas. The average percentage of CAPS+ cells for all cases was markedly different between low-grade and high-grade endometrioid carcinomas (43.33% vs. 4.31%, Table 1). Regarding clear cell tumors, only high-grade carcinomas were available. CAPS+ cells were observed in 9 of 30 (30%) of cases and the average percentage of CAPS+ cells per case was 3.2% (Table 1). Overall, CAPS+ cells were observed in 45% of the serous, 45% of the endometrioid, and 30% of clear cell compared to only 6% of mucinous carcinomas ($p = 0.01$).

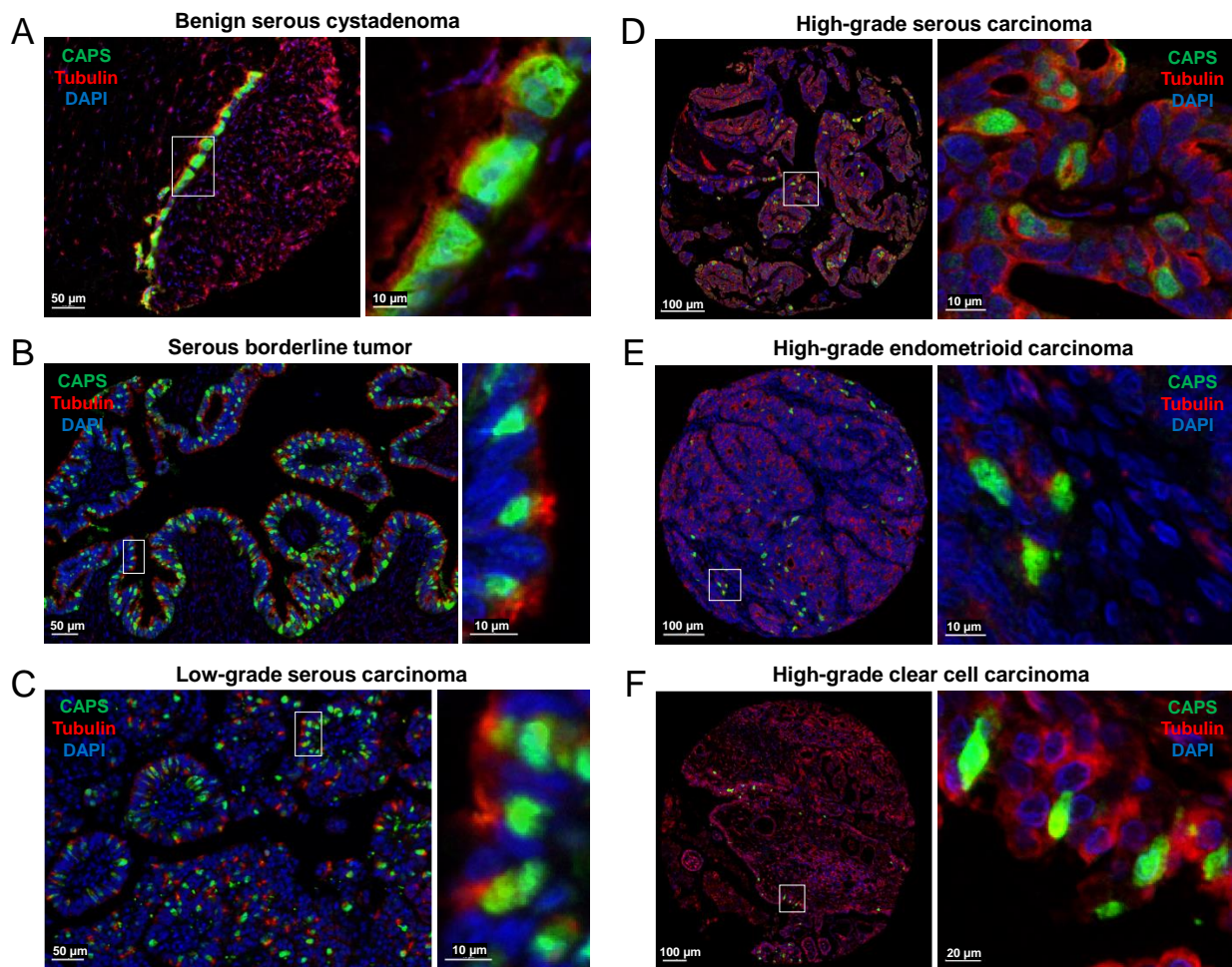


Figure 2. Ciliated cell markers CAPS and TUBB4 (mIF) in (A) benign serous cystadenoma, (B) serous borderline tumor, (C) serous low-grade carcinoma, (D) HGSOC, (E) high-grade endometrioid carcinoma, and (F) high-grade clear cell carcinoma. Images (left) are shown at higher magnification (right).

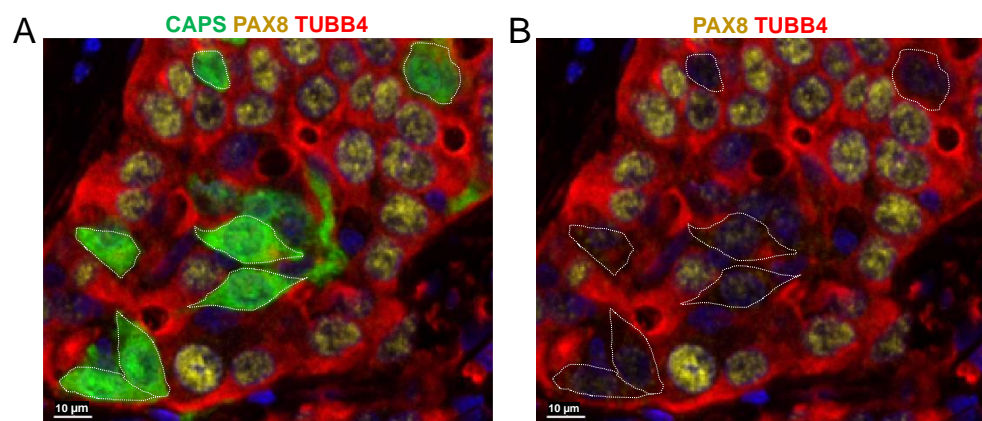


Figure 3. The nuclei of CAPS+ cells in HGSOC do not express PAX8. (A) CAPS, PAX8, and TUBB4 mIF, DAPI counterstain. (B) Same image as in (A) but without the CAPS channel (CAPS+ cells are outlined with a dotted line) for better visualization of the nuclear PAX8 staining.

Table 1. Summary of CAPS immunostaining results in ovarian tumors.

SEROUS	Ratio of	% CAPS+	Average % CAPS+
	CAPS+ Cases	Cases	in All Cases
Benign cystadenoma	6/7	85.71	40.00
Borderline tumor	11/13	84.61	31.54
Low-grade carcinoma	6/7	85.71	18.86
High-grade carcinoma	18/46	39.13	2.70
MUCINOUS	Ratio of	% CAPS+	Average % CAPS+
	CAPS+ Cases	Cases	in All Cases
Benign cystadenoma	1/9	11.11	2.22
Borderline tumor	0/12	0.00	0.00
Low-grade carcinoma	0/5	0.00	0.00
High-grade carcinoma	1/13	7.69	1.53
ENDOMETRIOID	Ratio of	% CAPS+	Average % CAPS+
	CAPS+ Cases	Cases	in All Cases
Low-grade carcinoma	8/9	88.88	43.33
High-grade carcinoma	9/29	31.03	4.31
CLEAR CELL	Ratio of	% CAPS+	Average % CAPS+
	CAPS+ Cases	Cases	in All Cases
High-grade carcinoma	9/30	30.00	3.20

3.2. mRNA Expression of Ciliated Cell Markers Is Higher in Borderline Tumors and Low-Grade Carcinomas than in High-Grade Carcinomas

We determined the mRNA expression levels of ciliated cell markers (FOXJ1 and CAPS) and a secretory cell marker (PAX8) in the CSIOVDB database, which includes 2433 serous, 185 endometrioid, 146 clear cell, and 78 mucinous ovarian carcinomas, 106 serous borderline (LMP) tumors, and 11 mucinous borderline (LMP) tumors. Both FOXJ1 and CAPS expression levels differed markedly between serous borderline tumors and serous carcinomas. The mean FOXJ1 expression in borderline serous tumors was 7.568 compared to 6.867 in serous carcinomas ($p = 2.35 \times 10^{-16}$) (Figure 4A). Similarly, the mean CAPS expression in serous borderline serous tumors was 9.508 compared to 8.207 in serous carcinomas ($p = 3.09 \times 10^{-27}$). In contrast, the mean PAX8 expression levels were similar in serous borderline tumors (9.978) and serous carcinomas (9.989; $p = 7.03 \times 10^{-1}$). Of note, mucinous tumors expressed low levels of both ciliated cell (FOXJ1, CAPS) and secretory cell (PAX8) cell markers, possibly suggesting a different cell of origin for this histologic subtype. FOXJ1 and CAPS expression levels also decreased with increasing tumor grade while PAX8 levels increased with tumor grade (Figure 4B). Thus, the mRNA expression results are highly concordant with the CAPS immunostaining results in TMAs 1–4 (Tables 1 and S1).

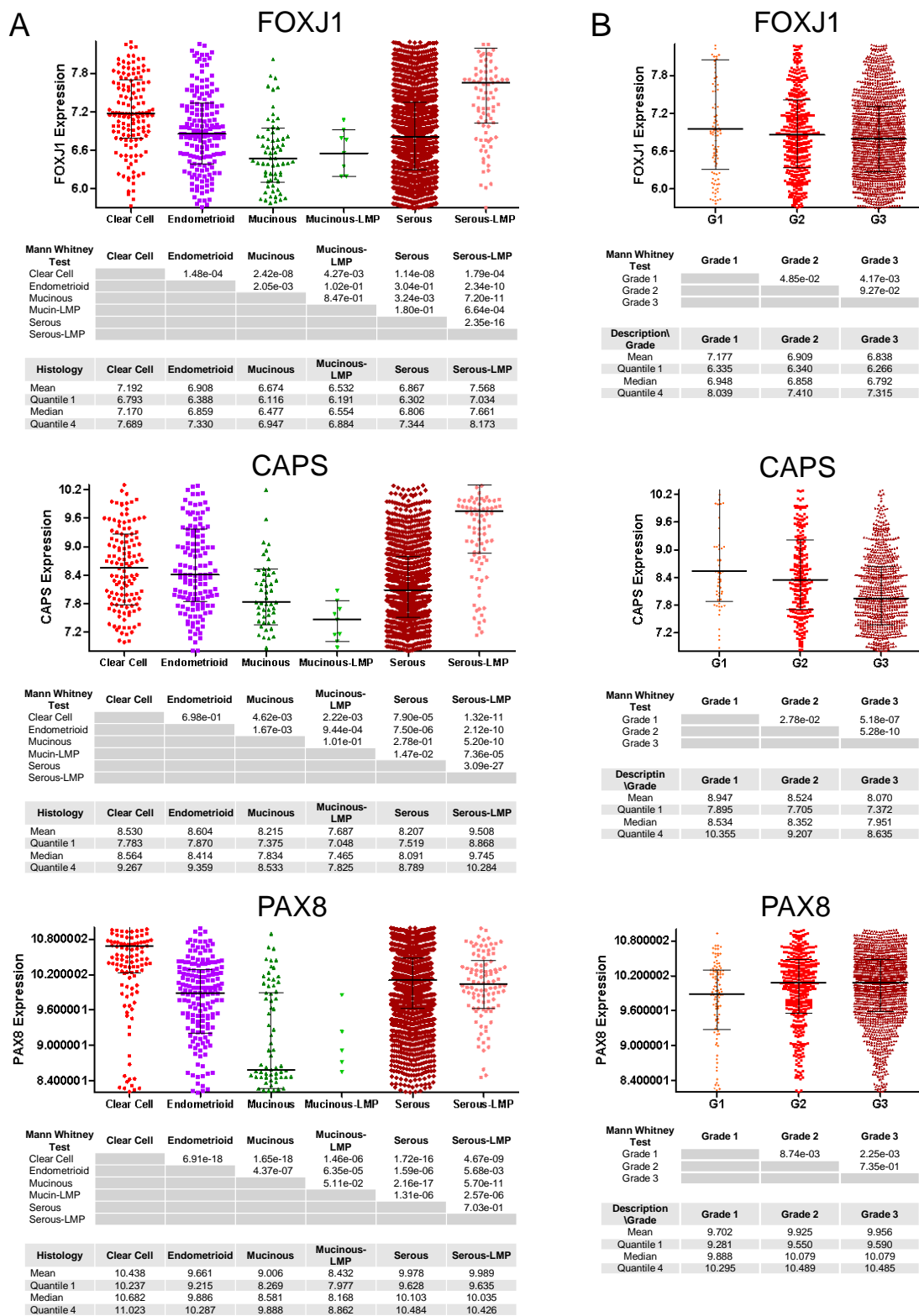
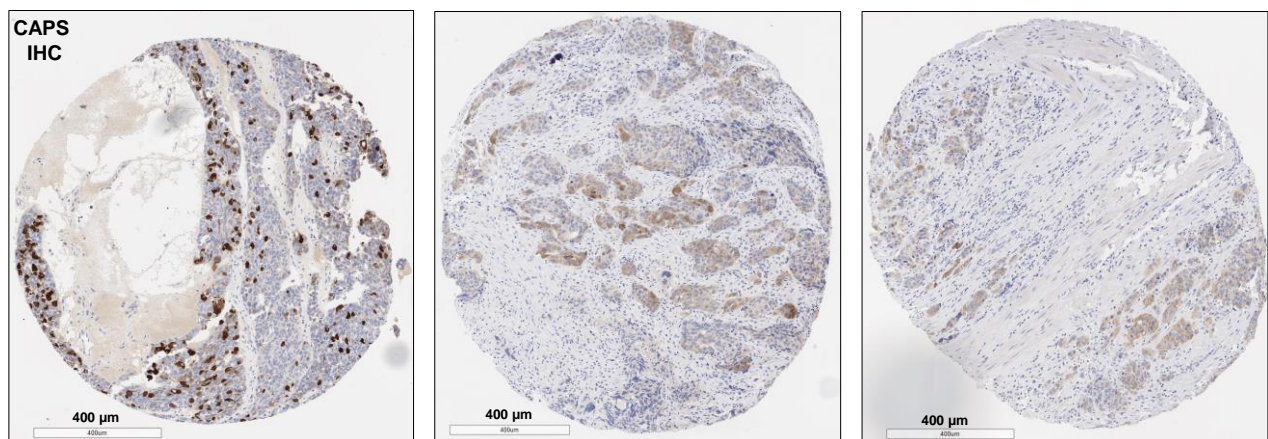


Figure 4. mRNA expression of ciliated cell markers FOXJ1 and CAPS and a secretory cell marker PAX8 in ovarian carcinomas (clear cell, endometrioid, mucinous, and serous) and borderline (LMP) tumors (mucinous, serous). (A) histologic subtypes and (B) cancer grade for all histologic subtypes combined. Y-axes represent relative mRNA levels.

3.3. Cells Expressing Ciliated Cell Markers Are Present in a Higher Percentage of Primary Tumors Than in Patient-Matched Metastases

Using the “HGSOC Progression” TMA, we compared the percentage of 42 patient-matched primary, synchronous metastatic, and metachronous/recurrent metastatic tumors for the presence of FOXJ1+ and/or CAPS+ cells. In this TMA, the primary and synchronous metastatic tumors were treatment naïve while the metachronous/recurrent metastases were obtained post-chemotherapy. FOXJ1+ and/or CAPS+ positive cells were identified in 22 of 42 (52%) primary tumors, 11 of 42 (26%) synchronous metastases, and 10 of 42 (24%) metachronous metastases. These percentages are consistent with 39.13% CAPS+ HGSOC in TMAs 1–4 (Table S1), considering that HGSOC samples in TMAs 1–4 were not necessarily primary tumors. The number of positive cells per core varied in the “HGSOC Progression” TMA, but in most cases where metastases contained FOXJ1+ and/or CAPS+ cells [8 of 11 (73%) synchronous and 8 of 10 (80%) metachronous], fewer positive cells were seen in the metastases than in the patient-matched primary tumor (Figure 5). Only 2 of 24 (8%) cases had FOXJ1+ and/or CAPS+ cells present in synchronous metastases but not in primary tumors. In one of those cases, both synchronous and metachronous metastases contained FOXJ1+ and/or CAPS+ cells.

A Patient 1



B Patient 2

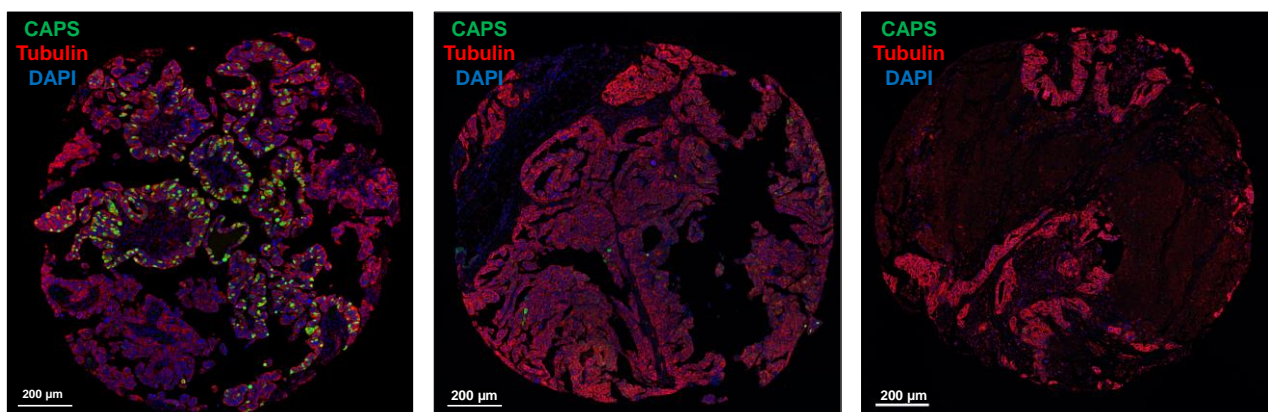


Figure 5. Detection of CAPS+ cells in primary, synchronous metastatic, and metachronous/recurrent metastatic HGSOC. Shown are two examples of HGSOC in which primary tumors exhibited high expression of CAPS by (A) IHC and (B) mIF.

4. Discussion

The role of ciliated cells in ovarian epithelial carcinogenesis is poorly understood. Recent evidence suggests that ciliated cells might help clear the oxidative and genotoxic

stress within the fallopian tube that is related to ovulation and the production of follicular fluid [4]. As terminally differentiated cells with low proliferative potential, ciliated cells themselves might be less prone to the accumulation of DNA damage [17]. The loss of ciliated cells is also associated with menopause and aging, which are known risk factors for EOC [20,21].

The presence of ciliated cells may underlie EOC development. In contrast to the well-described model of high-grade serous ovarian carcinogenesis—with progression of TP53 mutation to STIC lesions [3,6,7], the origin of other EOC histologic subtypes is less understood. Although both clear cell and endometrioid OC might arise from endometrial tissue via endometriosis, they can be of ciliated and secretory lineage, respectively [3,6,7,12,22]. Alternatively, an EOC could originate from a CIC, an invagination of ovarian surface mesothelium or displaced fallopian tube epithelium into the ovarian stroma and subsequent metaplasia of the cyst lining into Mullerian-type epithelium that can be a precursor for various carcinoma histologies [13,23]. The origin of serous borderline/LMP and serous low-grade carcinoma also remains relatively poorly understood. Kurman et al. proposed that mutation burden within CIC could determine low vs. high-grade disease [23] and Laury et al. suggested that serous borderline/LMP tumors might be linked to fallopian tube secretory cell outgrowths (SCOUTs) [24]. This sequence could also originate with ovarian cystadenoma as a principal precursor, and serous borderline/LMP tumor and low-grade carcinoma as eventual pathogenic variants [25]. Confirming the presence of ciliated cell markers in serous, endometrioid, and clear cell EOC supports the hypothesis that these histologic subtypes originate from precursor tissues containing ciliated cells, such as the fallopian tube, endometrium, and/or CIC.

We found that ciliated cells were rarely present in mucinous tumors, irrespective of lesion grade or malignant potential. Most mucinous tumors expressed relatively low mRNA levels of ciliated cell markers FOXJ1 and CAPS and there was a clear dichotomy in PAX8 mRNA expression when mucinous EOC were compared to serous, endometrioid, and clear cell EOC. The origin of mucinous EOC has been difficult to determine and is often confounded by possible confusion with metastases from other organs [26–28]. There may be a difference between subtypes of mucinous cancer such as endocervical or gastrointestinal which contribute to these findings, although these data were not available for our cases [29,30]. Our study adds to the scant literature on the relationship between ciliated cells and the origin of mucinous EOC in contrast to the origin of other EOC histologic subtypes [31].

Our results are consistent with a recent study that reported more numerous CAPS+ cells and higher levels of CAPS mRNA expression in low-grade serous EOC compared to HGSOC [32]. Additionally, we found that the presence of CAPS+ cells is not limited to low-grade serous EOC as we detected CAPS+ cells in approximately 85% of serous cystadenomas, borderline tumors, and low-grade carcinomas compared to <40% of HGSOC. Interestingly, the average percentage of CAPS+ cells for all cases decreased with increasing grade aggressiveness of serous lesions (~40% in cystadenomas, ~30% in borderline tumors, ~20% in low-grade carcinomas, and <3% in HGSOCs. This finding is consistent with previous associations between the loss of ciliated cell marker FOXJ1 and worsened prognosis [18]. Endometrioid EOC exhibited a similar phenomenon; CAPS+ cells were observed in 89% of low-grade endometrioid carcinomas compared to 31% of high-grade endometrioid carcinomas and the average percentage of CAPS+ in all cases was 10-times higher in low-grade compared to high-grade endometrioid carcinomas.

In HGSOC, we found an additional decline in the presence of ciliated cell marker-positive cells when primary tumors were compared to patient-matched metastases. Ciliated cell markers were identified in 52% of primary HGSOC compared to approximately 25% of patient-matched synchronous and metachronous/recurrent metastases. Little is known regarding either the mechanism(s) by which ciliated cells are lost during ovarian cancer progression or the possible active role ciliated cells play in preventing cancer initiation and progression. In a premenopausal fallopian tube, ciliated cells comprise up to 50%

of the tubal epithelial cells and are typically in direct contact with, or in close proximity to, secretory cells, which are the presumptive precursor cell type for ovarian cancer. The mechanism by which ciliated cells might protect secretory cells from genotoxic stress is unclear. One possibility is that the beating cilia provide physical protection like an umbrella over the secretory cells. Another possibility is that the juxtacrine and paracrine signaling between secretory and ciliated cells is needed to maintain homeostasis of the healthy cells and/or eliminate damaged and transformed cells from the epithelial monolayer through cell competition and extrusion. The reduction in the number of ciliated cells in menopause might alter this homeostasis and lead to the accumulation of damaged secretory cells that are vulnerable to tumorigenic transformation. However, it is less likely that ciliated cells have a protective role during the later stages of cancer progression as a sparse distribution of ciliated cells in tumors would dilute any physical or molecular means of protection. Based on the information currently available, fallopian tube and endometrial ciliated cells might initially be passively incorporated into the tumor mass. As terminally differentiated cells, ciliated cells cannot transdifferentiate or divide and are gradually outstripped by molecular (genetic, epigenetic, transcriptomic) conditions that result in a preferential proliferation of cancerous secretory-type cells during tumor progression. As such, ciliated cells are likely to be passive remnants of normal tissue engulfed by the tumor. Although ciliated cells in tumors might not have a protective role in tumor progression, their presence in a tumor might be a useful marker of reduced tumor aggressiveness, which is consistent with the observed positive correlation between the levels of ciliated cell markers and favorable clinical outcomes [18]. Our findings also raise the possibility that cellular mechanisms involved in tumor migration and/or adaptation to a new milieu (e.g., metastatic site) at least in part are responsible for, or contribute to, the decreased number of ciliated cells in HGSOE metastases compared to primary HGSOE.

Limitations to our study include the lack of demographic and clinical parameters, such as race, use of oral contraception, and use of hormone-replacement therapy, which might affect the number of ciliated cells. Our study was primarily histologic and did not link patient demographics to clinical outcomes. Our data do not clarify whether or not the presence or number of ciliated cells is determined by pre-existent patient or tumor characteristics or whether or not the number of ciliated cells present itself is prognostically significant. Additionally, although one of the largest studies to date, our number of TMAs and samples were relatively few and may be underpowered to detect differences. However, our study is strengthened by its utilization of a microarray validation dataset and by its unique focus on exploring ciliated cell markers in multiple stages of ovarian cancer progression.

In conclusion, we found that cells expressing ciliated cell markers were present in each of the five major histologic subtypes of EOC, and that ciliated cell marker-positive cells were more likely to be found in borderline and low-grade serous tumors compared to HGSOEs, as well as in primary HGSOEs compared to patient-matched metastases. Ciliated cell marker-positive cells were also less likely to be found in ovarian tumors of mucinous compared to other histologic subtypes. These findings support a model in which ciliated cell containing tissues, such as the fallopian tube, endometrium, and/or CIC, are the origin for the major histologic subtypes of EOC, with mucinous EOC being the exception. Future studies should focus on the mechanism(s) by which ciliated cells are lost during carcinogenesis, cancer progression, and metastatic spread. If ciliated cells provide protection from malignant transformation, understanding the mechanism of loss of ciliated cells may also lead to targets for prevention or treatment.

Supplementary Materials: The following supporting information can be downloaded at: <https://www.mdpi.com/article/10.3390/cells11244009/s1>, Table S1. Detection and quantitation of CAPS+ cells in TMAs 1-4.

Author Contributions: M.T.R. reviewed the literature and wrote the manuscript. M.S.R. conducted the experiments. A.E.W. assisted in the design and analysis of tissue microarrays. B.Y.K. provided

patient samples for tissue microarrays and curated clinical data. S.O. designed the study and analyzed the data. All authors contributed to the writing of the manuscript. Conceptualization, S.O.; methodology, M.S.R. and S.O.; validation, S.O. and M.S.R.; formal analysis, S.O.; investigation, S.O. and M.T.R.; resources, B.Y.K. and A.E.W.; data curation, B.Y.K. and A.E.W.; writing—original draft preparation, S.O. and M.T.R.; writing—review and editing, S.O., M.S.R., M.T.R., B.Y.K. and A.E.W.; visualization, S.O.; supervision, S.O.; funding acquisition, S.O. All authors have read and agreed to the published version of the manuscript.

Funding: SO is supported by the United States Department of Veterans Affairs Merit Award VA-ORD I01 BX004974, the Office of the Assistant Secretary of Defense for Health Affairs through the Ovarian Cancer Research Program Award No. W81XWH2210631, the Iris Cantor-UCLA Women’s Health Center/UCLA National Center of Excellence in Women’s Health Pilot Research Project NCATS UCLA CTSI grant UL1TR00188, the Sandy Rollman Ovarian Cancer Foundation, and the Annenberg Foundation. MSR is supported by the Tina’s Wish Foundation.

Institutional Review Board Statement: The study of de-identified human archival materials was conducted in accordance with the Declaration of Helsinki, and approved by the Cedars-Sinai Medical Center Institutional Review Board (IRB).

Informed Consent Statement: Written informed consent has been obtained from the patients at Cedars-Sinai Medical Center to use their archival specimens for research.

Data Availability Statement: The raw and processed data presented in this study are available upon request from the corresponding author.

Acknowledgments: We thank the Cedars-Sinai Biobank and Translational Research Core for assistance in obtaining TMAs and the UCLA Department of Pathology and Laboratory Medicine Translational Pathology Core Laboratory (TPCL) for immunostaining.

Conflicts of Interest: The authors declare no conflict of interest. The funders had no role in the design of the study; in the collection, analyses, or interpretation of data; in the writing of the manuscript; or in the decision to publish the results.

References

1. Siegel, R.L.; Miller, K.D.; Fuchs, H.E.; Jemal, A. Cancer statistics, 2022. *CA Cancer J. Clin.* **2022**, *72*, 7–33. [[CrossRef](#)] [[PubMed](#)]
2. Harter, P.; Gershenson, D.; Lhomme, C.; Lecuru, F.; Ledermann, J.; Provencher, D.M.; Mezzanzanica, D.; Quinn, M.; Maenpaa, J.; Kim, J.W.; et al. Gynecologic Cancer InterGroup (GCIg) consensus review for ovarian tumors of low malignant potential (borderline ovarian tumors). *Int. J. Gynecol. Cancer* **2014**, *24*, S5–S8. [[CrossRef](#)] [[PubMed](#)]
3. Kurman, R.J.; Shih, I.M. The Dualistic Model of Ovarian Carcinogenesis: Revisited, Revised, and Expanded. *Am. J. Pathol.* **2016**, *186*, 733–747. [[CrossRef](#)] [[PubMed](#)]
4. Coan, M.; Rampioni Vinciguerra, G.L.; Cesaratto, L.; Gardenal, E.; Bianchet, R.; Dassi, E.; Vecchione, A.; Baldassarre, G.; Spizzo, R.; Nicoloso, M.S. Exploring the Role of Fallopian Ciliated Cells in the Pathogenesis of High-Grade Serous Ovarian Cancer. *Int. J. Mol. Sci.* **2018**, *19*, 2512. [[CrossRef](#)] [[PubMed](#)]
5. Dalrymple, J.C.; Bannatyne, P.; Russell, P.; Solomon, H.J.; Tattersall, M.H.; Atkinson, K.; Carter, J.; Duval, P.; Elliott, P.; Friedlander, M. Extraovarian peritoneal serous papillary carcinoma. A Clin. icopathologic study of 31 cases. *Cancer* **1989**, *64*, 110–115. [[CrossRef](#)] [[PubMed](#)]
6. Bowtell, D.D.; Böhm, S.; Ahmed, A.A.; Aspuria, P.J.; Bast, R.C.; Beral, V.; Berek, J.S.; Birrer, M.J.; Blagden, S.; Bookman, M.A.; et al. Rethinking ovarian cancer II: Reducing mortality from high-grade serous ovarian cancer. *Nat. Rev. Cancer* **2015**, *15*, 668–679. [[CrossRef](#)] [[PubMed](#)]
7. Lee, Y.; Miron, A.; Drapkin, R.; Nucci, M.R.; Medeiros, F.; Saleemuddin, A.; Garber, J.; Birch, C.; Mou, H.; Gordon, R.W.; et al. A candidate precursor to serous carcinoma that originates in the distal fallopian tube. *J. Pathol.* **2007**, *211*, 26–35. [[CrossRef](#)]
8. King, S.M.; Hilliard, T.S.; Wu, L.Y.; Jaffe, R.C.; Fazleabas, A.T.; Burdette, J.E. The impact of ovulation on fallopian tube epithelial cells: Evaluating three hypotheses connecting ovulation and serous ovarian cancer. *Endocr. Relat. Cancer* **2011**, *18*, 627–642. [[CrossRef](#)]
9. Lau, A.; Kollara, A.; St John, E.; Tone, A.A.; Virtanen, C.; Greenblatt, E.M.; King, W.A.; Brown, T.J. Altered expression of inflammation-associated genes in oviductal cells following follicular fluid exposure: Implications for ovarian carcinogenesis. *Exp. Biol. Med.* **2014**, *239*, 24–32. [[CrossRef](#)]
10. Saed, G.M.; Diamond, M.P.; Fletcher, N.M. Updates of the role of oxidative stress in the pathogenesis of ovarian cancer. *Gynecol. Oncol.* **2017**, *145*, 595–602. [[CrossRef](#)]
11. Lyons, R.A.; Saridogan, E.; Djahanbakhch, O. The reproductive significance of human Fallopian tube cilia. *Hum Reprod Update* **2006**, *12*, 363–372. [[CrossRef](#)] [[PubMed](#)]

12. Cochrane, D.R.; Tessier-Cloutier, B.; Lawrence, K.M.; Nazeran, T.; Karnezis, A.N.; Salamanca, C.; Cheng, A.S.; McAlpine, J.N.; Hoang, L.N.; Gilks, C.B.; et al. Clear cell and endometrioid carcinomas: Are their differences attributable to distinct cells of origin? *J. Pathol.* **2017**, *243*, 26–36. [[CrossRef](#)] [[PubMed](#)]
13. Banet, N.; Kurman, R.J. Two types of ovarian cortical inclusion cysts: Proposed origin and possible role in ovarian serous carcinogenesis. *Int. J. Gynecol. Pathol.* **2015**, *34*, 3–8. [[CrossRef](#)] [[PubMed](#)]
14. Comer, M.T.; Andrew, A.C.; Leese, H.J.; Trejdosiewicz, L.K.; Southgate, J. Application of a marker of ciliated epithelial cells to gynaecological pathology. *J. Clin. Pathol.* **1999**, *52*, 355–357. [[CrossRef](#)]
15. Park, K.J.; Patel, P.; Linkov, I.; Jotwani, A.; Kauff, N.; Pike, M.C. Observations on the origin of ovarian cortical inclusion cysts in women undergoing risk-reducing salpingo-oophorectomy. *Histopathology* **2018**, *72*, 766–776. [[CrossRef](#)]
16. George, S.H.; Milea, A.; Sowamber, R.; Chehade, R.; Tone, A.; Shaw, P.A. Loss of LKB1 and p53 synergizes to alter fallopian tube epithelial phenotype and high-grade serous tumorigenesis. *Oncogene* **2016**, *35*, 59–68. [[CrossRef](#)]
17. Levanon, K.; Ng, V.; Piao, H.Y.; Zhang, Y.; Chang, M.C.; Roh, M.H.; Kindelberger, D.W.; Hirsch, M.S.; Crum, C.P.; Marto, J.A.; et al. Primary ex vivo culture of human fallopian tube epithelium as a model for serous ovarian carcinogenesis. *Oncogene* **2010**, *29*, 1103–1113. [[CrossRef](#)]
18. Weir, A.; Kang, E.Y.; Meagher, N.S.; Nelson, G.S.; Ghatage, P.; Lee, C.H.; Riggan, M.J.; Gentry-Maharaj, A.; Ryan, A.; Singh, N.; et al. Increased FOXJ1 protein expression is associated with improved overall survival in high-grade serous ovarian carcinoma: An Ovarian Tumor Tissue Analysis Consortium Study. *Br. J. Cancer* **2022**, 1–11. [[CrossRef](#)]
19. Tan, T.Z.; Yang, H.; Ye, J.; Low, J.; Choolani, M.; Tan, D.S.; Thiery, J.P.; Huang, R.Y. CSIOVDB: A microarray gene expression database of epithelial ovarian cancer subtype. *Oncotarget* **2015**, *6*, 43843–43852. [[CrossRef](#)]
20. Tao, T.; Lin, W.; Wang, Y.; Zhang, J.; Chambers, S.K.; Li, B.; Lea, J.; Zheng, W. Loss of tubal ciliated cells as a risk for "ovarian" or pelvic serous carcinoma. *Am. J. Cancer Res.* **2020**, *10*, 3815–3827.
21. Wu, J.; Raz, Y.; Recouvreux, M.S.; Diniz, M.A.; Lester, J.; Karlan, B.Y.; Walts, A.E.; Gertych, A.; Orsulic, S. Focal Serous Tubal Intra-Epithelial Carcinoma Lesions Are Associated With Global Changes in the Fallopian Tube Epithelia and Stroma. *Front. Oncol.* **2022**, *12*, 853755. [[CrossRef](#)] [[PubMed](#)]
22. Crum, C.P.; Drapkin, R.; Kindelberger, D.; Medeiros, F.; Miron, A.; Lee, Y. Lessons from BRCA: The tubal fimbria emerges as an origin for pelvic serous cancer. *Clin. Med. Res.* **2007**, *5*, 35–44. [[CrossRef](#)] [[PubMed](#)]
23. Kurman, R.J.; Shih, I.M. The origin and pathogenesis of epithelial ovarian cancer: A proposed unifying theory. *Am. J. Surg Pathol.* **2010**, *34*, 433–443. [[CrossRef](#)]
24. Laury, A.R.; Ning, G.; Quick, C.M.; Bijron, J.; Parast, M.M.; Betensky, R.A.; Vargas, S.O.; McKeon, F.D.; Xian, W.; Nucci, M.R.; et al. Fallopian tube correlates of ovarian serous borderline tumors. *Am. J. Surg Pathol.* **2011**, *35*, 1759–1765. [[CrossRef](#)] [[PubMed](#)]
25. Horn, L.C.; Angermann, K.; Hentschel, B.; Einenkel, J.; Höhn, A.K. Frequency of papillary tubal hyperplasia (PTH), salpingoliths and transition from adenoma to borderline ovarian tumors (BOT): A systematic analysis of 74 BOT with different histologic types. *Pathol. Res. Pract* **2017**, *213*, 305–309. [[CrossRef](#)] [[PubMed](#)]
26. Cheasley, D.; Wakefield, M.J.; Ryland, G.L.; Allan, P.E.; Alsop, K.; Amarasinghe, K.C.; Ananda, S.; Anglesio, M.S.; Au-Yeung, G.; Böhm, M.; et al. The molecular origin and taxonomy of mucinous ovarian carcinoma. *Nat. Commun.* **2019**, *10*, 3935. [[CrossRef](#)] [[PubMed](#)]
27. Ledermann, J.A.; Luvero, D.; Shafer, A.; O'Connor, D.; Mangili, G.; Friedlander, M.; Pfisterer, J.; Mirza, M.R.; Kim, J.W.; Alexandre, J.; et al. Gynecologic Cancer InterGroup (GCIg) consensus review for mucinous ovarian carcinoma. *Int. J. Gynecol. Cancer* **2014**, *24*, S14–S19. [[CrossRef](#)] [[PubMed](#)]
28. Morice, P.; Gouy, S.; Leary, A. Mucinous Ovarian Carcinoma. *N Engl. J. Med.* **2019**, *380*, 1256–1266. [[CrossRef](#)]
29. Babaier, A.; Ghatage, P. Mucinous Cancer of the Ovary: Overview and Current Status. *Diagnostics* **2020**, *10*, 52. [[CrossRef](#)]
30. Lin, X.; Lindner, J.L.; Silverman, J.F.; Liu, Y. Intestinal type and endocervical-like ovarian mucinous neoplasms are immunophenotypically distinct entities. *Appl. Immunohistochem. Mol. Morphol.* **2008**, *16*, 453–458. [[CrossRef](#)]
31. Meagher, N.S.; Gorringer, K.L.; Wakefield, M.J.; Bolithon, A.; Pang, C.N.I.; Chiu, D.S.; Anglesio, M.S.; Mallitt, K.A.; Doherty, J.A.; Harris, H.R.; et al. Gene expression profiling of mucinous ovarian tumors and comparison with upper and lower gastrointestinal tumors identifies markers associated with adverse outcomes. *Clin. Cancer Res.* **2022**, 1206. [[CrossRef](#)] [[PubMed](#)]
32. Hu, Z.; Cunnea, P.; Zhong, Z.; Lu, H.; Osagie, O.I.; Campo, L.; Artibani, M.; Nixon, K.; Ploski, J.; Santana Gonzalez, L.; et al. The Oxford Classic Links Epithelial-to-Mesenchymal Transition to Immunosuppression in Poor Prognosis Ovarian Cancers. *Clin. Cancer Res.* **2021**, *27*, 1570–1579. [[CrossRef](#)] [[PubMed](#)]