



Evaluation of a fast-and-frugal clinical decision algorithm ('pathways') on clinical outcomes in hospitalised patients with COVID-19 treated with anticoagulants

Benjamin Djulbegovic MD, PhD^{1,2,3} | Iztok Hozo PhD⁴ | David Lizarraga PhD^{1,2,3} | Joseph Thomas MD^{5,6} | Michael Barbee MD^{5,6} | Nupur Shah DO^{5,7} | Tyler Rubeor MDcand⁵ | Jordan Dale MD⁸ | Jochen Reiser MD, PhD^{5,9} | Gordon Guyatt MD, MS¹⁰

¹Department of Computational & Quantitative Medicine, City of Hope, Beckman Research Institute, Duarte, California, USA

²Division of Health Analytics, Beckman Research Institute, Duarte, California, USA

³Evidence-Based Medicine & Comparative Effectiveness Research, Beckman Research Institute, Duarte, California, USA

⁴Department of Mathematics, Indiana University, Gary, Indiana, USA

⁵Rush University Medical Center (RUMC), Chicago, Illinois, USA

⁶Division of Hospital Medicine, Department of Hospital Medicine, Rush University Medical Center, Chicago, Illinois, USA

⁷Department of Emergency Medicine, Rush University Medical Center, Chicago, Illinois, USA

⁸Houston Methodist Academic Institute, Houston, Texas, USA

⁹Department of Internal Medicine, Rush University Medical Center, Chicago, Illinois, USA

¹⁰Department of Health Research Methods, Evidence, and Impact, McMaster University, Hamilton, ON, Canada

Correspondence

Benjamin Djulbegovic, MD, PhD, Beckman Research Institute, 1500 E Duarte Rd, Duarte, CA 91010-3000, USA.
Email: bdjulbegovic@coh.org

Funding information

Agency for Healthcare Research and Quality

Abstract

Rationale, Aims and Objectives: Critics have charged that evidence-based medicine (EBM) overemphasises algorithmic rules over unstructured clinical experience and intuition, but the role of structured decision support systems in improving health outcomes remains uncertain. We aim to assess if delivery of anticoagulant prophylaxis in hospitalised patients with COVID-19 according to an algorithm based on evidence-based clinical practice guideline (CPG) improved clinical outcomes compared with administration of anticoagulant treatment given at individual practitioners' discretion.

Methods: An observational design consisting of the analysis of all acutely ill, consecutive patients ($n = 1783$) with confirmed COVID-19 diagnosis admitted between 10 March 2020 to 11 January 2022 to an US academic center. American Society of Haematology CPG for anticoagulant prophylaxis in hospitalised patients with COVID-19 was converted into a clinical pathway and translated into fast-and-frugal decision (FFT) tree ('algorithm'). We compared delivery of anticoagulant prophylaxis in hospitalised patients with COVID-19 according to the FFT algorithm with administration of anticoagulant treatment given at individual practitioners' discretion.

Results: In an adjusted analysis, using combination of Lasso (least absolute shrinkage and selection operator) and propensity score based weighting [augmented inverse-probability weighting] statistical techniques controlling for cluster data, the algorithm did not reduce death, venous thromboembolism, or major bleeding, but helped avoid longer hospital stay [number of patients needed to be treated (NNT) = 40 (95% CI: 23–143), indicating that for every 40 patients (23–143) managed on FFT algorithm, one avoided staying in hospital longer than 10 days] and

This is an open access article under the terms of the Creative Commons Attribution-NonCommercial License, which permits use, distribution and reproduction in any medium, provided the original work is properly cited and is not used for commercial purposes.

© 2022 The Authors. *Journal of Evaluation in Clinical Practice* published by John Wiley & Sons Ltd.

averted admission to intensive-care unit (ICU) [NNT = 19 (95% CI: 13–40)]. All model's selected covariates were well balanced. The results remained robust to sensitivity analyses used to test the stability of the findings.

Conclusions: When delivered using a structured FFT algorithm, CPG shortened the hospital stay and help avoided admission to ICU, but it did not affect other relevant outcomes.

KEYWORDS

clinical decision making, clinical pathways, decision support, evidence based medicine, fast-and-frugal trees, practice guidelines

1 | INTRODUCTION

It is generally considered that interventions delivered according to evidence-based clinical practice guidelines (CPGs) improve health outcomes.^{1,2} However, empirical evidence supporting this widely held belief is limited, prompting the critique that evidence-based medicine (EBM) overemphasises algorithmic decision rules over physicians' intuition and experience.^{3,4}

During the COVID-19 pandemic many inadequately tested and unproven therapies have, largely driven by uncontrolled physicians' experience, dominated the practice of medicine^{5,6} raising the question if health interventions delivered according to evidence-protocols could have improved health outcomes.⁷

One of the challenges of evaluating evidence-based practices is the lack of a theoretical framework for their evaluation.^{8,9} Clinical practice mostly entails a series of decisions, while CPGs usually consists of single or multiple recommendations that typically are not linked via a series of decisions into a coherent management strategy. Clinical pathways (CPs) can help logically organise the sequence of clinically decisions.^{10,11} That is, CPGs can be thought of as addressing one recommendation at a time,¹² while CPs represent healthcare plans (referred to as protocols, clinical algorithms, or flow-charts) that provide detailed steps about the course of management of a particular clinical problem or the entire spectrum of care.^{11,12}

Although it is estimated that CPs are implemented in more than 80% of hospitals in the United States,^{10,11,13} they are also theory-free constructs, typically developed in an ad hoc manner adhering in varying degrees to evidence-based practices.⁹ CPs can, however, be translated into fast-and-frugal (FFT) decisions trees- sound theoretical constructs that allow the quantitative analysis of delivery healthcare interventions.^{9,14} FFT draws its theoretical robustness by relating to signal detection theory, evidence accumulation theory, and the threshold model to help improve decision-making.^{14,15} FFTs consist of simple decision trees composed of sequentially ordered cues (tests) and binary (yes/no) decisions formulated via a series of *If-then* statements.¹⁴ Decision strategies based on FFTs have been found to be superior to other decision and classification strategies, including those using complex multivariate regression and machine learning models.^{15,16} FFTs are grounded in the *heuristic approach* to

rational decision making.^{16–20} Importantly, both clinical practice and medical education relies on heuristics as one of the key problem solving and decision making strategies.

COVID-19 is a thromboinflammatory disorder, which places infected patients with SARS-Cov-2 virus at risk for venous-thromboembolism (VTE), bleeding and death.^{21,22} The risk is further amplified in hospitalised patients.^{21,22, 23} Using GRADE (Grading of Recommendations Assessment, Development and Evaluation)—the state-of-the-art system for developing CPGs- the American Society of Haematology (ASH) developed recommendations for anticoagulation of acutely ill patients with COVID-19. In February of 2021, the ASH panel issued weak/conditional recommendations (suggestions) in favour of prophylactic anticoagulation,²⁴ while in May of 2022,²⁵ the panel updated their recommendations to suggest the use of therapeutic intensity anticoagulation for acutely but not critically ill hospitalised patients with COVID-19.

Prevention of the aforementioned COVID-19 complications can be instituted according to the FFT-based decision tree, or be left to individual providers' discretion ('usual care'). Therefore, we set out to evaluate if adherence to evidence-informed clinical pathway translated into FFT compared with ad hoc administration of anticoagulant as per individual clinicians' choice results in improved patients' outcomes.

2 | METHODS

2.1 | Eligible patients

All acutely ill, consecutive patients with confirmed COVID-19 diagnosis not requiring admission to an intensive care unit (ICU) were eligible for the analyses. The patients were admitted from 10 March 2020 to 11 January 2022 to one of the three Rush hospitals in Chicago.

2.2 | Evidence and guidelines

Based on comprehensive review of mostly non-randomised evidence, the ASH panel initially issued weak/conditional recommendations (suggestions) in favour of prophylactic anticoagulation using low-

molecular weight heparins (LMWH).²⁴ After consideration of evidence from additional six randomised trials (RCTs)—two on the effects of direct acting anticoagulant (DOAC) rivaroxaban and four related to prophylaxis with LMWH,^{26–31} the panel updated its recommendation in May of 2022²⁵ in favour of therapeutic intensity anticoagulation with LMWH for acutely but not critically ill hospitalised patients with COVID-19. The recommendations are consistent with two meta-analyses of RCTs, which indicated beneficial effects of therapeutic intensity anticoagulation in terms of reduction of VTE but no significant effect on overall mortality and major bleeding.^{32,33} However, on both occasions, the panel assessed that recommendations was based on very low certainty in the evidence, acknowledging that administration of the prophylactic LMWH is also appropriate, particularly in patients considered at the lower risk³⁴ for COVID-19 complications or higher bleeding risk.^{24,25} The latter is also echoed by International Society on Thrombosis and Haemostasis (ISTH), which issued a strong recommendation for the use of prophylactic over therapeutic anticoagulation for non-critically ill hospitalised patients with COVID-19.³⁵

2.3 | Pathway-FFT algorithm

Figure 1 visually presents conversion of ASH CPGs into CPs, and their translation into FFT. One of the challenges of developing evidence-based management for COVID-19 is the rapid change in evidence base requiring continuous update of the guidelines.³⁶ Given the quick realisation that COVID-19 is a thromboinflammatory disorder, the Rush Health System has developed pathways endorsing prophylactic anticoagulation for low risk hospitalised patients, initially based on observational data. Periodic re-assessment of evidence base related to antithrombotic treatment in COVID-19, including the ASH and

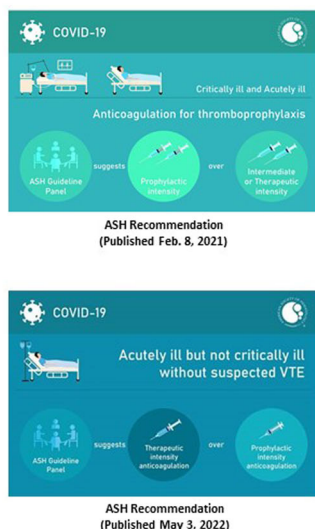
other evidence-based guidelines indicated no need to change the pathways. Therefore, Figure 1 represents FFT based on best existing evidence as of January 2022 (when the data collection was locked).

Given uncertainty about evidence and weak recommendations, Rush has also allowed treatment off pathways per discretion of individual clinicians. FFT-based strategy has solely employed prophylactic anticoagulation with LMWH but according to standard, evidence-based dose adjustments and the protocols.^{37,38} A management off pathway has typically been ad hoc, not strictly protocolized even though it may have included the same type of drugs. Note that the management according to the pathway was delivered via standard orders, which we then (retrospectively) converted into FFTs to allow the proposed analysis. Importantly, it is FFT's clear and explicit 'if-then' rules that allow accurate assessment of adherence to the FFT/pathway intervention to distinguish between those patients who received prophylactic anticoagulation in the control ('off-pathway') versus on pathway group. Fundamentally, because the pathway is composed of built-in standard orders, the adherence to the FFT-based management guarantee better compliance with the treatment, which makes us hypothesise that the improved outcomes will be observed in on vs off-pathway arm. *Because our main goal is to contrast two management strategies, we aimed to compare the use of evidence-based pathway (algorithm) versus not adhering to FFT-pathway (Figure 1), while having patients in both groups received prophylactic anticoagulation.* Thus, two groups were identical according to all covariates except the management received.

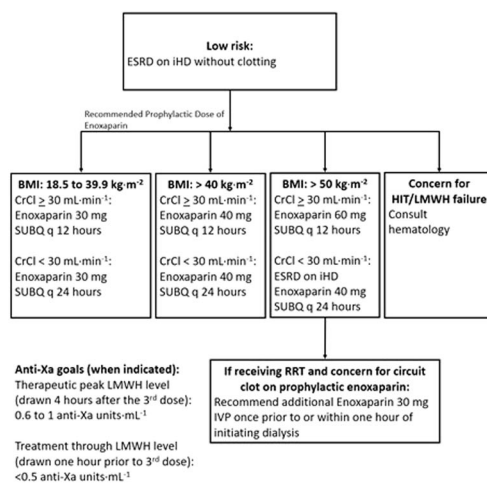
2.4 | Outcomes

Because the use of composite endpoints depends on a common biology, similar relative effects, and similar importance—and without

ASH evidence-based guidelines



RUSH Health System's Clinical Pathway



FFT for thromboprophylaxis in hospitalized low risk patients with COVID19

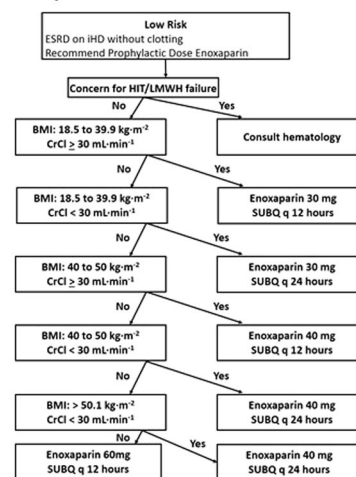


FIGURE 1 A visual presentation of a conversion of the American Society of Haematology evidence-based guidelines into Rush hospital clinical pathways and their translation into fast-and-frugal (FFT) decision tree



these commonalities can be misleading.³⁹ we selected death, VTE and major bleeding as three key primary outcomes, and hospital length of stay greater than 10 days [LOS10d] and admission to ICU as two secondary outcomes.

2.5 | Data collection and validation

We collected data on key demographics, clinical items, treatments, and health outcomes from the Rush electronic medical records (EPIC)/discharge records. Supporting Information: Appendix 3 shows ICD10 and other codes we used to select the variables of interest for the analysis. We considered that outcomes death, LOS and admission to ICU were accurately recorded in the electronic record/administrative data sets we used. We further reviewed the pharmacy records, orders, progress and discharge notes to ascertain the accuracy of classification for 100% of patients who developed outcome of interest (VTE, major-bleed), and 20% of random cases of the patients deemed not to have VTE or major bleeding. The overall accuracy for classification of VTE outcome was 97% and 94% for major bleed, respectively. Using the same data source, we also assessed the overall accuracy of exposure for delivery of anticoagulants. We determined the overall accuracy of 82% in the ascertainment of the exposure. Eighteen percent of patients who were not correctly classified had their treatment switched from no treatment to therapeutic to prophylactic or vice versa. We investigated the effect of the anticoagulant switch in a sensitivity analysis.

2.6 | Statistical analysis

2.6.1 | Rationale

Statistically, one can argue that because its strong theoretical underpinning, evaluation of FFT-algorithm can be assessed using unadjusted comparisons. However, in observational studies we can never be sure that the effects of intervention (adherence to FFT-pathway algorithm, in our case) are solely responsible for observed outcome and not prognostic imbalance or cointerventions. Hence, these factors ought to be considered in the analysis. We therefore performed adjusted analysis by considering covariates that are commonly reported in the literature to affect the outcomes of patients with COVID-19.⁴⁰

Because we could not strongly postulate which of these covariates—with multiple interactions—should be selected in the final adjusted analysis, we used *lasso* (least absolute shrinkage and selection operator) statistical technique to select relevant variables for the analysis while remaining robust to the problem of overfitting; indeed, high-dimensional *lasso* can handle situations when there are more variables than observations. We employed adaptive *lasso* method that not only avoids overselecting the covariates with zero coefficients, but also avoids missing covariates with large coefficients as some other commonly used *lasso* methods such as cross-validation (CV) or plug-in techniques are prone to do.

Once *lasso* selected the relevant variables, we applied propensity score methods to create a balanced covariate distribution between treated (on FFT-pathway) and untreated (off FFT-algorithm) groups.⁴¹ We used Stata programme *telasso logit*, which combines *lasso* with propensity score based weighting [augmented inverse-probability weighting (AIPW)] technique, in which we controlled for observations within each Rush Campus Site.⁴² By achieving balance in the covariates between two comparison groups, the AIPW allows estimation of the treatment that is, the decision algorithm's effect independent of the effects of observed covariates. We expressed the effects of FFT-algorithm in terms of the average treatment effect (ATE), defined as the mean of the difference between two treatment groups (treatment according to FFT clinical algorithm vs. treatment off algorithm). Where appropriate we also expressed the results as NNT (number of patients who would need to be managed by one strategy compared to another to prevent one COVID-19-related outcome).⁴³

We tested validity of the model by using a series of diagnostic tests. These consisted of testing the nonviolation of the overlap assumption (requiring an overlap between the treatment and control to meet requirement of exchangeability with respect to all covariates included in the model) and testing for balance in the covariate distribution between treated (on FFT-algorithm) and untreated (off FFT-algorithm) patients. We used Stata *teffects overlap* routine to test for violation of overlap assumption, *tebalance overid* as a global test to reject the null hypothesis that covariates are balanced, *tebalance summarised* to test for balance for each individual covariate and summarise differences between each covariates. We accepted standardised mean differences (SMD) < 0.1 as evidence of well-balanced covariates.⁴⁴

As is typical for any observational study, data on the number of covariates were missing. Therefore, before the analyses, we imputed missing data. After determining that data were missing at random (MAR), we used multiple imputation method that, unlike complete case analysis, does not generate biased results.^{45,46} We used Stata *mi impute chained* routine, which implement multivariate imputation using chained equations (MICE) method.⁴² We conducted five imputations, each of which generated similar results, thus making more imputations unnecessary. We used Rubin's rules⁴⁷ to combine the imputed data sets into a pooled estimate in the final analysis along with the estimates for each imputed set.

2.6.2 | Sensitivity analyses to assess the robustness of the results

Our default analysis was per intention-to-treat (ITT). Because, as mentioned, some patients had their anticoagulants switched (AC switch) from none to prophylactic to therapeutic and vice versa, to assess the impact of this switch in the exposure, we also performed sensitivity analysis by dropping these patients from the analysis. For four variables (CK, LDH, BNP and D-dimer), imputed data exceeded 50%; hence, we performed sensitivity analyses by repeating all

analyses with imputed more than 30% of missing data. We report the analysis according to STROBE (Strengthening the Reporting of Observational studies in Epidemiology) guidelines.⁴⁸

Because this project is considered a quality improvement project, it was deemed by the COH Institutional Board Review (IRB) to require no formal ethical review/approval [COH Protocol #/Ref #/., 20646,200278]. However, high research standard to protect confidentiality and guard against breach of privacy has been exercised, and no patient identifiers have been used/made available to the authors.

3 | RESULTS

Figure 2 shows the STROBE flow-chart depicting the study patients' enrolment, exclusion criteria and data availability for the analysis according to anticoagulation treatment. From 10 March 2020 to 11 January 2022, 4332 consecutive patients diagnosed with COVID-19 were admitted to three hospitals within the Rush Health System. Of these, 2549 were excluded, leaving 1783 patients for the analyses. All remaining patients received prophylactic anticoagulation, 948 (53%) according to pathway/FFT algorithm, and 835 (47%) off pathway, per individual providers' discretion. All patients managed on pathway received LMWH enoxaparin. Of 835 patients treated off pathway, 549 (66%) were given LMWH (enoxaparin), 197 (24%) received unfractionated heparins

and 89 (10%) got 'combined' treatment (typically DOAC (direct oral anticoagulants) followed by unfractionated heparins).

Table 1 shows variables considered in the analysis. Sixty-one percent of patients had mild or no comorbidities; 24% moderate and 15% of patients had severe Charlson Comorbidity Index ≥ 5 .⁴⁹ More than 70% of the patients required oxygen supplementation on admission. Between 1/3 to 2/3 patients received antibiotics, antiviral agents (including remdesivir) and steroids.

Most variables were not balanced making the analysis based on unadjusted comparison potentially biased.

Figure 3 shows the results of an unadjusted and adjusted analysis. While unadjusted analysis suggested that the management according to the algorithm may reduce mortality compared to treatment off algorithm, this was not confirmed in the adjusted analysis [ARR = 0.2% (95% CI: -0.5% to 1%)]. Adjusted analysis show no difference in VTE [ARR = 0.6% (95% CI: -0.2% to 1.4%)] and major bleeding rate [ARR = 0.1% (95% CI: -0.7% to 0.6%)]. The management according to pathway/FFT algorithm helped avoid a longer hospital stay: NNT = 40 (95% CI: 23–143), indicating that for every 40 patients (23–143) managed on FFT algorithm, one avoided staying in hospital longer than 10 days, while one in 19 (95% CI: 13–40) averted admission to ICU (Figure 4).

Supporting Information: Tables A1–A3 show output of *telasso* regression analysis for all primary outcomes. Out of 28 postulated variables (Table 1) that may be associated with outcomes of interest,

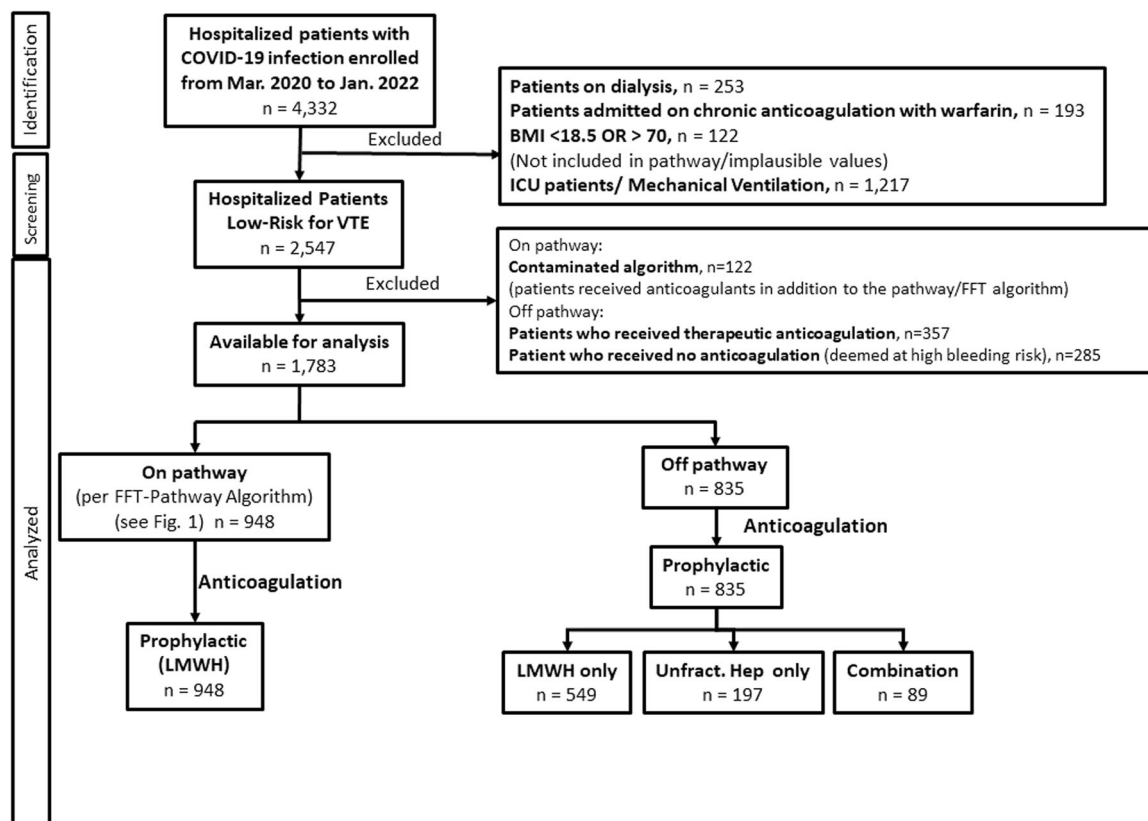


FIGURE 2 STROBE flow-chart depicting the study patients' enrolment, exclusion criteria and data availability for the analysis according to anticoagulation treatment. Abbreviations: unfract.: unfractionated.

TABLE 1 Baseline characteristics of the covariates considered for the analysis for decision-making that either followed the pathway (FFT-clinical algorithm) or not (nonpathway)

Total Continuous variables	Non-pathway (treatment off FFT algorithm) 835						Pathway (treatment per FFT algorithm) 948						p
	Mean	Med	Min	Max	SD	N	Mean	Med	Min	Max	SD	N	
BMI	31.65	30.5	18.7	66.8	8.03	743	34.17	32	18.8	69.3	9.25	946	<0.01
CCI	2.43	2	0	14	2.34	835	2.12	2	0	14	2.07	948	0.02
Age (years)	59.07	60	17	121	18.41	835	59.22	60	13	106	16.97	948	0.93
Admission ALT	37.2	27	1	344	36.82	815	45.91	32	1	1068	59.48	943	<0.01
Admission ANC	5.49	4.8	0.8	48.89	3.52	809	5.25	4.7	0.3	22.63	2.77	933	0.52
Admission AST	45.53	34	8	452	43.64	815	53.42	38	7	1172	69.17	943	<0.01
Admission BNP	254.9	35.5	1	10580	901.58	210	84	18	1	2036	198	288	<0.01
Admission BUN	19.13	14	3	129	15.21	828	17.44	14	2	136	13.08	947	0.03
Admission CK	312.28	130	6	6945	652.8	318	318.42	130	13	5924	589.13	632	0.40
GFR	73.86	75.95	4.11	138.67	29.64	835	75.17	78.53	6.43	140.69	28.07	948	0.34
Admission LDH	355.49	322	101	2365	181.65	513	380.01	352	102	6577	287.84	633	<0.01
Admission Albumin	3.48	3.5	1.2	4.9	0.53	815	3.44	3.5	1.3	5	0.47	943	0.05
Admission Calcium	8.88	8.8	6.1	11.6	0.64	828	8.75	8.7	6.2	12.4	0.55	947	<0.01
ddimer	1.76	0.83	0.01	35.59	3.86	567	1.22	0.71	0.02	23.17	1.86	700	<0.01
Admission Platelet	231.61	212	55	800	97.39	834	221.53	207	42	759	84.55	948	0.05
Categorical variables	Number yes		%		Number yes		%						
Cultures_Positive	31		3.71		20		2.11		0.0466				
ID_CONSULT	3		0.36		5		0.53		0.7303				
Immunocompromised	37		4.43		28		2.95		0.1012				
Pregnant	36		4.31		10		1.05		<0.01				
Sepsis	40		4.79		21		2.22		<0.01				
Race									<0.01				
White-NH	239		28.62		171		18.04						
White-Hisp	76		9.10		117		12.34						
Other	230		27.54		329		34.70						
Black	290		34.73		331		34.92						
Sex									0.9621				
Female	429		51.38		489		51.58						
Male	406		48.62		459		48.42						
Treatment	Number yes		%		Number yes		%						
Oxygen_Orders	543		65.03		788		83.12		<0.01				
Supplemental_O2	604		72.34		732		77.22		0.0186				
Antibiotics	448		53.65		327		34.49		<0.01				
Antivirals	379		45.39		468		49.37		0.0964				
Remdesivir	359		42.99		462		48.73		0.0173				
Steroids	498		59.64		594		62.66		0.2054				

Note: See Figure 2 for details of treatment with anticoagulants.

Abbreviations: ALT, alanine transaminase; ANC, absolute neutrophil count; AST, aspartate aminotransferase; BMI, body mass index; BNP, B-type natriuretic peptide; BUN, blood urea nitrogen; CCI, charlson comorbidity index; CK, creatine kinase; GFR, glomerular filtration rate; LDH, lactate dehydrogenase.

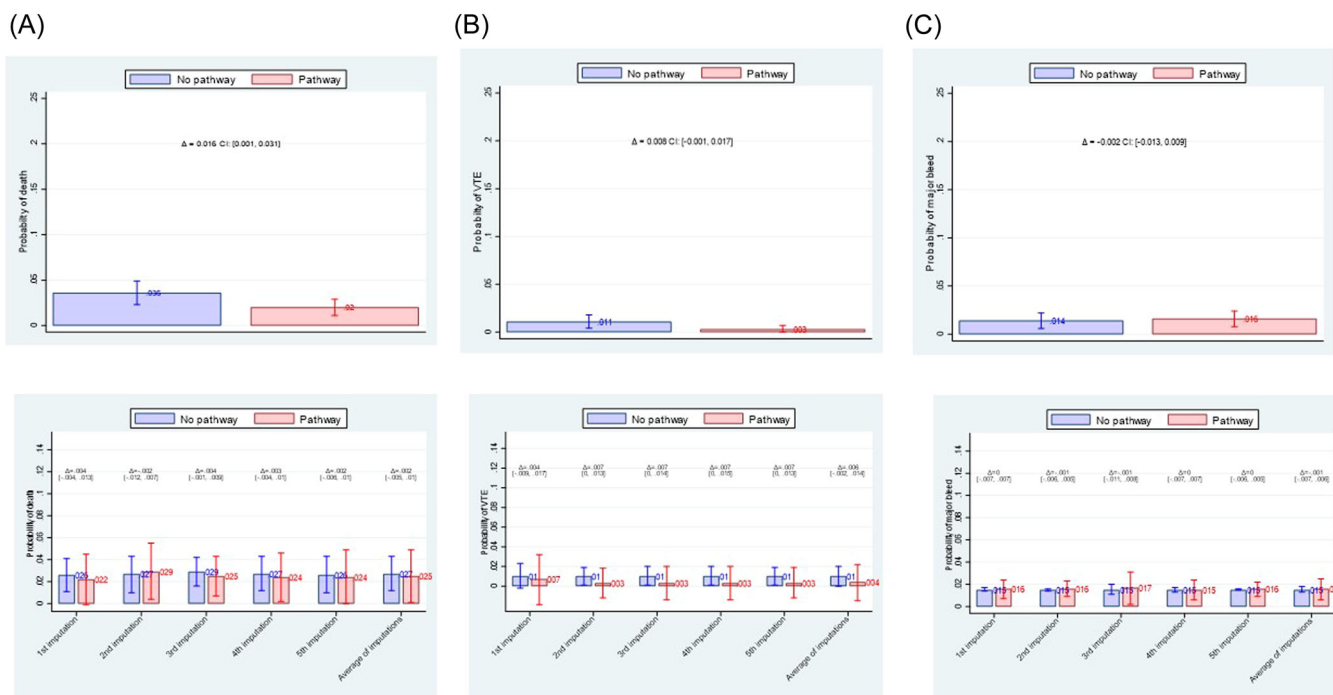


FIGURE 3 Comparison of effect of fast-and-frugal decision (FFT)-algorithm versus management off the algorithm on reducing death, VTE (venous thromboembolism) or major bleeding. (A) unadjusted analysis (upper row); (B) adjusted analysis (lower row). Overall, there is no difference in effects between two management strategies on any of clinical outcomes.

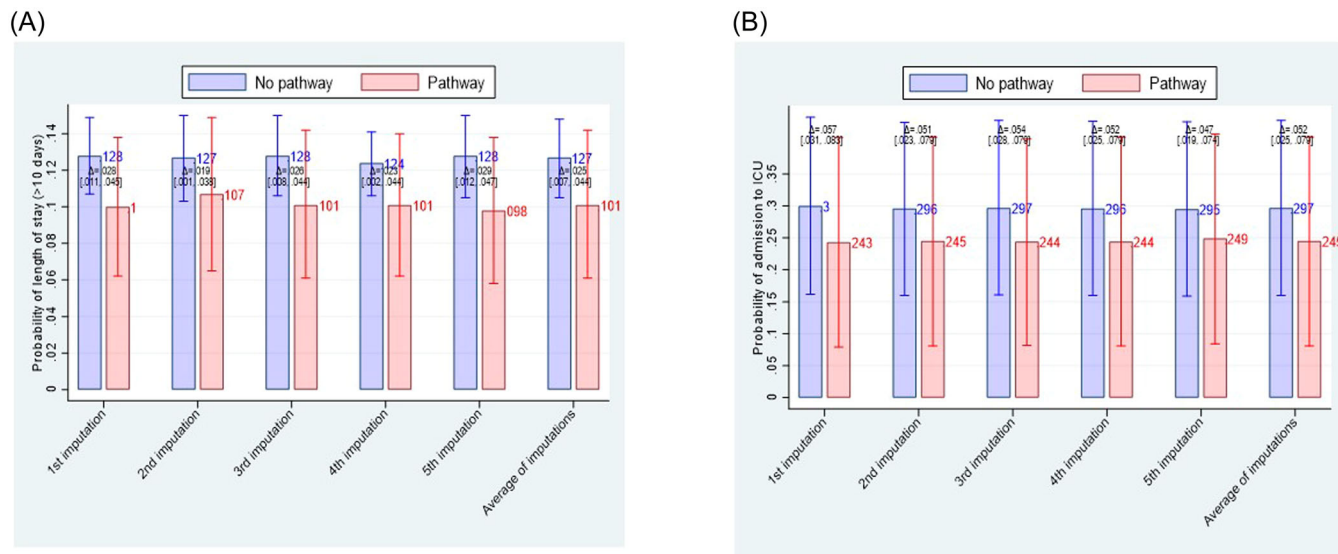


FIGURE 4 Comparison of effect of fast-and-frugal decision (FFT)-algorithm versus management off the algorithm on secondary outcomes. Compared with the usual care, FFT-based strategy helped avoided stay in the hospital longer than 10 days by about 2.5% (95% CI: 0.7%–4%) (A) and averted admission to intensive-care unit (ICU) by about 5% (95% CI 2.5%–8%) (B).

lasso created 127 potentially relevant variables (including interactions) to ultimately select between 9 and 32 variables, depending on outcome (Supporting Information: Tables A1–A3).

Supporting Information: Figures A1 to A5 show standardised differences before and after propensity score weighting. All variables

retained in the analyses were well balanced with SMD < 0.1. Similarly, we detected no violation of overlap assumption.

Sensitivity analysis based on dropping variables with >30% of missing data Supporting Information: Figures 6A to 8B) and per actual treatment received that is, when patients with AC switch were

dropped from the analysis generated similar results as the primary analysis (Supporting Information: Figures 9A to 11B).

4 | DISCUSSION

Clinical care is complex, often presents itself as a chaotic mass of data without clear structures and regularity⁵⁰ making use of formal models indispensable.^{16,19} However, it is not clear that decision-making based on the use of models is superior to usual clinical practice, which is typically based on the physicians' experiential and intuitive reasoning.^{3,51–53}

To our knowledge, we report the first study demonstrating that evidence-based guidelines—when delivered via FFT decision tree—can improve some outcomes (hospital stay and admission to ICU) although not other outcomes such as death, VTE or major bleeding. By explicitly and transparently translating key elements of importance for making decisions into FFT, we also respond to the critique that guidelines have inherent 'integration and black-box' operation problems.⁵⁴ We have hypothesised that better compliance that standardised, algorithmically delivered intervention assure will result in improved outcomes more directly related to the interventions, but we observed effects only on the LOS10d and ICU admission but not on VTE, death or bleeding.

The explanation for these findings may relate to the lack of power-unlike high VTE and bleeding (and death rates) observed in many COVID-19 studies,²¹ in our analysis we encountered very low rates for all primary outcomes (2%–3% for death rates, <1% for VTE, and about 1.5% for major bleed), similar to those observed in some randomised trials^{26–33} but typically not in observational studies.²¹ On other hand, the event rate for LOD10d and the ICU admission was much higher, about 10%–13% and 25%–30%, respectively. It may be that most practitioners are well versed in anticoagulation, and that algorithmically driven management would unlikely impact outcomes when the intervention targets these well-known drugs. However, the quality problems with hospital VTE prophylaxis are well documented^{55,56} making it difficult to believe that standardised, evidence-based protocols would not be useful. Indeed, sheer knowledge that one adheres to the state-of-the-art decision algorithm may provide necessary confidence to discharge, or not admit a patient to the ICU where default action would be to act otherwise.

Does delivery of prophylactic anticoagulation via FFT-algorithm provide support for the ASH²⁵ and ISTH³⁵ guidelines recommending antithrombotic treatment with LMWH at prophylactic rather than therapeutic-intensity doses in hospitalised patients with COVID-19 at low risk to progression to critical diseases? In populations with the very low VTE, death and bleeding rates we observed, this is likely the case particularly when this regimen may improve important hospital outcomes such as the length of stay and averting admission to the ICU.

The main limitation of our study is that we employed an observational (retrospective analysis) rather than a randomised design that would have allowed drawing stronger inferences regarding causal attribution of outcomes to the intervention. In addition, our analysis applies to the population at very low risk for key primary outcomes. Nevertheless, success rate in enrolling all

(over 4300) consecutive patients hospitalised with COVID-19, use of the state-of-the-art advanced, multifaceted statistical methods, and extensive sensitivity analyses that confirmed the robustness of the findings indicated high validity of the presented results.

5 | CONCLUSIONS

By testing effect of decision-making via algorithmically delivered FFT, we showed for the first time that evidence-based guidelines improve clinical outcomes that are not rare. A randomised trial to further test comparative effectiveness of FFT versus usual care in common conditions would open the avenue for more decisive assessment if algorithmically driven decision-making can outperform usual, pattern-recognition, intuitive clinical reasoning.^{50–52}

AUTHOR CONTRIBUTIONS

All authors contributed to the research methods, writing and revising the manuscript. Benjamin Djulbegovic serves as the guarantor of the article.

ACKNOWLEDGEMENTS

The project was supported by grant number R01HS024917 from the Agency for Healthcare Research and Quality (PI: Dr. Djulbegovic). The content is solely the responsibility of the authors and does not necessarily represent the official views of the Agency for Healthcare Research and Quality.

CONFLICT OF INTEREST

The authors declare no conflict of interest.

DATA AVAILABILITY STATEMENT

The data that support the findings of this study are available from the corresponding author upon reasonable request.

ORCID

Benjamin Djulbegovic  <http://orcid.org/0000-0003-0671-1447>

REFERENCES

1. Djulbegovic B, Guyatt GH. Progress in evidence-based medicine: a quarter century on. *Lancet*. 2017;390(10092):415–423.
2. Graham R, Mancher M, Wolman DM, Greenfield S, Steinberg E, Editors., *Clinical Practice Guidelines we can Trust*. Institute of Medicine, National Academies Press; 2011.
3. Greenhalgh T, Howick J, Maskrey N. Evidence based medicine: a movement in crisis? *BMJ*. 2014;348:g3725.
4. Greenhalgh T, Fisman D, Cane DJ, Oliver M, Macintyre CR. Adapt or die: how the pandemic made the shift from EBM to EBM+ more urgent. *BMJ Evid Based Med*. 2022;5:253–260.
5. Burns KEA, Laird M, Stevenson J, et al. Adherence of clinical practice guidelines for pharmacologic treatments of hospitalized patients with COVID-19 to trustworthy standards: a systematic review. *JAMA Netw Open*. 2021;4(12):e2136263.



6. Pecho-Silva S, Navarro-Solsol AC, Panduro-Correa V, et al. Non-recommended medical interventions and their possible harm in patients with COVID-19. *Ther Adv Infect Dis*. 2021;8:20499361211034070.
7. Abdool Karim SS, Devnarain N. Time to stop using ineffective Covid-19 drugs. *N Engl J Med*. 2022;387(7):654-655.
8. Manski CF. *Improving Clinical Guidelines and Decisions Under Uncertainty*. NBER Working Paper Series; 2017.
9. Djulbegovic B, Hozo I, Dale W. Transforming clinical practice guidelines and clinical pathways into fast-and-frugal decision trees to improve clinical care strategies. *J Eval Clin Pract*. 2018;24:1247-1254.
10. Rotter T, Kinsman L, James E, et al. Clinical pathways: effects on professional practice, patient outcomes, length of stay and hospital costs. *Cochrane Database Syst Rev*. 2010:CD006632.
11. Kinsman L, Rotter T, James E, Snow P, Willis J. What is a clinical pathway? development of a definition to inform the debate. *BMC Med*. 2010;8:31.
12. DeMartino JK, Larsen JK. Equity in cancer care: pathways, protocols, and guidelines. *J Natl Compr Canc Netw*. 2012;10(suppl 1):S1-S9.
13. Zon RT, Edge SB, Page RD, et al. American society of clinical oncology criteria for high-quality clinical pathways in oncology. *J Oncol Pract*. 2017;13(3):207-210.
14. Hozo I, Djulbegovic B, Luan S, Tsalatsanis A, Gigerenzer G. Towards theory integration: threshold model as a link between signal detection theory, fast-and-frugal trees and evidence accumulation theory. *J Eval Clin Pract*. 2017;23(1):49-65.
15. Luan S, Schooler LJ, Gigerenzer G. A signal-detection analysis of fast-and-frugal trees. *Psychol Rev*. 2011;118(2):316-338.
16. Katsikopoulos KV, Simsek O, Buckmann M, Gigerenzer G. *Classification in the Wild. The Science and Art of Transparent Decision Making*. The MIT Press; 2021.
17. Katsikopoulos KV, Gigerenzer G. One-reason decision-making: modeling violations of expected utility theory. *J Risk Uncertain*. 2008;37(1):35.
18. Gigerenzer G, Brighton H. Homo heuristicus: why biased minds make better inferences. *Top Cogn Sci*. 2009;1(1):107-143.
19. Gigerenzer G, Hertwig R, Pachur T, eds. *Heuristics. The Foundation of Adaptive Behavior*. Oxford University Press; 2011.
20. Gigerenzer G, Todd PM, and the ABC Research Group. *Simple Heuristics That Make Us Smart*. Oxford University Press; 1999.
21. Thomas MR, Scully M. Clinical features of thrombosis and bleeding in COVID-19. *Blood*. 2022;140(3):184-195.
22. Ho FK, Pell JP. Thromboembolism and bleeding after covid-19. *BMJ*. 2022;377:o817.
23. Gratz J, Wiegele M, Maleczek M, et al. Risk of clinically relevant venous thromboembolism in critically ill patients with COVID-19: a systematic review and meta-analysis. *Front Med (Lausanne)*. 2021;8:647917.
24. Cuker A, Tseng EK, Nieuwlaat R, et al. American Society of Hematology 2021 guidelines on the use of anticoagulation for thromboprophylaxis in patients with COVID-19. *Blood Adv*. 2021;5(3):872-888.
25. Cuker A, Tseng EK, Nieuwlaat R, et al. American Society of Hematology living guidelines on the use of anticoagulation for thromboprophylaxis in patients with COVID-19: January 2022 update on the use of therapeutic-intensity anticoagulation in acutely ill patients. *Blood Adv*. 2022;6:4915-4923.
26. Morici N, Podda G, Birocchi S, et al. Enoxaparin for thromboprophylaxis in hospitalized COVID-19 patients: the X-COVID-19 randomized trial. *Eur J Clin Invest*. 2022;52(5):e13735.
27. Lopes RD, de Barros ESPGM, Furtado RHM, et al. Therapeutic versus prophylactic anticoagulation for patients admitted to hospital with COVID-19 and elevated D-dimer concentration (ACTION): an open-label, multicentre, randomised, controlled trial. *Lancet*. 2021;397(10291):2253-2263.
28. Ananworanich J, Mogg R, Dunne MW, et al. Randomized study of rivaroxaban vs placebo on disease progression and symptoms resolution in high-risk adults with mild coronavirus disease 2019. *Clin Infect Dis*. 2022;75:e473-e481.
29. Spyropoulos AC, Goldin M, Giannis D, et al. Efficacy and safety of therapeutic-dose heparin vs standard prophylactic or intermediate-dose heparins for thromboprophylaxis in high-risk hospitalized patients with COVID-19: the HEP-COVID randomized clinical trial. *JAMA Internal Medicine*. 2021;181(12):1612-1620.
30. Sholzberg M, Tang GH, Rahhal H, et al. Effectiveness of therapeutic heparin versus prophylactic heparin on death, mechanical ventilation, or intensive care unit admission in moderately ill patients with covid-19 admitted to hospital: RAPID randomised clinical trial. *BMJ*. 2021;375:n2400.
31. The ATTACC A-a, and REMAP-CAP Investigators. Therapeutic anticoagulation with heparin in noncritically ill patients with Covid-19. *N Engl J Med*. 2021;385(9):790-802.
32. Sholzberg M, da Costa BR, Tang GH, et al. Randomized trials of therapeutic heparin for COVID-19: a meta-analysis. *Res Pract Thromb Haemost*. 2021;5(8):e12638.
33. Pilia E, Belletti A, Fresilli S, Finco G, Landoni G. Efficacy and safety of heparin full-dose anticoagulation in hospitalized non-critically ill COVID-19 patients: a meta-analysis of multicenter randomized controlled trials. *J Thromb Thrombolysis*. 2022;1-11. Published online August 3, 2022. doi:10.1007/s11239-022-02681-x
34. Smith CA, Barnes GD. Annals for hospitalists inpatient notes - venous thromboembolism prophylaxis in COVID-19: making sense of the evidence. *Ann Intern Med*. 2022;175(6):HO2-HO3.
35. Schulman S, Sholzberg M, Spyropoulos AC, et al. ISTH guidelines for antithrombotic treatment in COVID-19. *J Thromb Haemostasis*. 2022;20:2214-2225.
36. Clyne B, Hynes L, Kirwan C, et al. Perspectives on the production, and use, of rapid evidence in decision making during the COVID-19 pandemic: a qualitative study. *BMJ Evid Based Med*. 2022;bmjebm2021-111905.
37. Ortel TL, Neumann I, Ageno W, et al. American Society of Hematology 2020 guidelines for management of venous thromboembolism: treatment of deep vein thrombosis and pulmonary embolism. *Blood Adv*. 2020;4(19):4693-4738.
38. Witt DM, Nieuwlaat R, Clark NP, et al. American Society of Hematology 2018 guidelines for management of venous thromboembolism: optimal management of anticoagulation therapy. *Blood Adv*. 2018;2(22):3257-3291.
39. Montori VM, Permanyer-Miralda G, Ferreira-González I, et al. Validity of composite end points in clinical trials. *BMJ*. 2005;330(7491):594-596.
40. Galanter W, Rodríguez-Fernández JM, Chow K, et al. Predicting clinical outcomes among hospitalized COVID-19 patients using both local and published models. *BMC Med Inform Decis Mak*. 2021;21(1):224.
41. Ali MS, Prieto-Alhambra D, Lopes LC, et al. Propensity score methods in health technology assessment: principles, extended applications, and recent advances. *Front Pharmacol*. 2019;10:973.
42. STATA, ver. 17 computer program; 2021.
43. Urrutia G, Ferreira-González I, Guyatt G, Devereaux PJ. Numbers Needed to Treat. In: Guyatt G, Meade M, Cook D, eds., *Users' Guides to the Medical Literature: A Manual for Evidence-Based Clinical Practice*. McGraw-Hill; 2014:249-257.
44. Zhang Z, Kim HJ, Lonjon G, Zhu Y. Balance diagnostics after propensity score matching. *Ann Transl Med*. 2019;7(1):16.
45. Azur MJ, Stuart EA, Frangakis C, Leaf PJ. Multiple imputation by chained equations: what is it and how does it work? *Int J Methods Psychiatr Res*. 2011;20(1):40-49.
46. Zhang Y, Alyass A, Vanniyasingam T, et al. A systematic survey of the methods literature on the reporting quality and optimal methods of handling participants with missing outcome data for continuous outcomes in randomized controlled trials. *J Clin Epidemiol*. 2017;88:67-80.

47. Marshall A, Altman D, Holder R, Royston P. Combining estimates of interest in prognostic modelling studies after multiple imputation: current practice and guidelines. *BMC Med Res Methodol*. 2009;9:57.
48. von Elm E, Altman DG, Egger M, et al. The strengthening the reporting of observational studies in epidemiology (STROBE) statement: guidelines for reporting observational studies. *Ann Intern Med*. 2007;147(8):573-577.
49. Charlson ME, Pompei P, Ales KL, MacKenzie CR. A new method of classifying prognostic comorbidity in longitudinal studies: development and validation. *J Chronic Dis*. 1987;40(5):373-383.
50. Maldonato M, Dell'Orco S. Decision making styles and adaptive algorithms for human action. *Psychology*. 2011;2(8):811-816.
51. Dreyfus HL, Dreyfus SE. Mind over machine: the power of human intuition and expertise in the era of the computer. *IEEE Expert*. 1987;2:110-111.
52. Djulbegovic B, Beckstead J, Nash DB. Human judgment and health care policy. *Popul Health Manag*. 2014;17(3):139-140.
53. Djulbegovic B, Beckstead JW, Elqayam S, et al. Evaluation of physicians' cognitive styles. *Med Decis Making*. 2014;34(5):627-637.
54. Mercuri M, Baigrie B, Upshur REG. Going from evidence to recommendations: can GRADE get us there? *J Eval Clin Pract*. 2018;24(5):1232-1239.
55. Djulbegovic M, Chen K, Sureshanand S, Chaudhry S. Overuse of primary thromboprophylaxis in medical inpatients at low risk of venous thromboembolism. *J Gen Intern Med*. 2021;36(9):2883-2885.
56. Forgo G, Micieli E, Ageno W, et al. An update on the global use of risk assessment models and thromboprophylaxis in hospitalized patients with medical illnesses from the world thrombosis day steering committee: systematic review and meta-analysis. *J Thromb Haemost*. 2022;20(2):409-421.

SUPPORTING INFORMATION

Additional supporting information can be found online in the Supporting Information section at the end of this article.

How to cite this article: Djulbegovic B, Hozo I, Lizarraga D, et al. Evaluation of a fast-and-frugal clinical decision algorithm ('pathways') on clinical outcomes in hospitalised patients with COVID-19 treated with anticoagulants. *J Eval Clin Pract*. 2023;29:3-12. doi:10.1111/jep.13780