

A comparison between hospital follow-up and collaborative follow-up in patients with acute heart failure

Koichi Washida¹, Takao Kato^{1*}, Neiko Ozasa¹, Takeshi Morimoto², Hidenori Yaku³, Yasutaka Inuzuka⁴, Yodo Tamaki⁵, Yuta Seko¹, Erika Yamamoto¹, Yusuke Yoshikawa¹, Masayuki Shiba¹, Takeshi Kitai⁶, Yugo Yamashita¹, Ryoji Taniguchi⁷, Moritake Iguchi⁸, Kazuya Nagao⁹, Yuichi Kawase¹⁰, Yuji Nishimoto⁷, Takashi Kuragaichi⁷, Kozo Hotta⁷, Takashi Morinaga¹¹, Mamoru Toyofuku¹², Yutaka Furukawa¹³, Kenji Ando¹¹, Kazushige Kadota¹⁰, Yukihito Sato⁷, Koichiro Kuwahara¹⁴ and Takeshi Kimura¹

¹Department of Cardiovascular Medicine, Kyoto University Graduate School of Medicine, Kyoto, Japan; ²Clinical Epidemiology, Hyogo College of Medicine, Nishinomiya, Japan; ³Department of Cardiology, Mitsubishi Kyoto Hospital, Kyoto, Japan; ⁴Cardiovascular Medicine, Shiga General Hospital, Moriyama, Japan; ⁵Division of Cardiology, Tenri Hospital, Nara, Japan; ⁶Department of Cardiovascular Medicine, National Cerebral and Cardiovascular Center, Osaka, Japan; ⁷Department of Cardiology, Hyogo Prefectural Amagasaki General Medical Center, Amagasaki, Hyogo, Japan; ⁸Department of Cardiology, National Hospital Organization Kyoto Medical Center, Kyoto, Japan; ⁹Department of Cardiology, Osaka Red Cross Hospital, Osaka, Japan; ¹⁰Department of Cardiology, Kurashiki Central Hospital, Okayama, Japan; ¹¹Department of Cardiology, Kokura Memorial Hospital, Fukuoka, Japan; ¹²Department of Cardiology, Japanese Red Cross Wakayama Medical Center, Wakayama, Japan; ¹³Department of Cardiovascular Medicine, Kobe City Medical Center General Hospital, Kobe, Hyogo, Japan; and ¹⁴Department of Cardiovascular Medicine, Shinshu University Graduate School of Medicine, Nagano, Japan

Abstract

Aims There are no previous studies focusing on collaborative follow-ups between hospitals and clinics for patients discharged after acute heart failure (AHF) in Japan. The purpose of this study was to determine the status of collaboration between hospitals and clinics for patients with AHF in Japan and to compare patient characteristics and clinical outcomes using a large Japanese observational database.

Methods and results Of 4056 consecutive patients hospitalized for AHF in the Kyoto Congestive Heart Failure registry, we analysed 2862 patients discharged to go home, who were divided into 1674 patients (58.5%) followed up at hospitals with index hospitalization (hospital follow-up group) and 1188 (41.5%) followed up in a collaborative fashion with clinics or other general hospitals (collaborative follow-up group). The primary outcome was a composite of all-cause death or heart failure (HF) hospitalization within 1 year after discharge. Previous hospitalization for HF and length of hospital stay longer than 15 days were associated with hospital follow-up. Conversely, ≥ 80 years of age, hypertension, and cognitive dysfunction were associated with collaborative follow-up. The cumulative 1-year incidence of the primary outcome, all cause death, and cardiovascular death were similar between the hospital and collaborative follow-up groups (31.6% vs. 29.6%, $P = 0.51$, 13.1% vs. 13.9%, $P = 0.35$, 8.4% vs. 8.2%, $P = 0.96$). Even after adjusting for confounders, the difference in risk for patients in the hospital follow-up group relative to those in the collaborative follow-up group remained insignificant for the primary outcome, all-cause death, and cardiovascular death (HR: 1.11, 95% CI: 0.97–1.27, $P = 0.14$, HR: 1.10, 95% CI: 0.91–1.33, $P = 0.33$, HR: 0.96, 95% CI: 0.87–1.05, $P = 0.33$). The cumulative 1-year incidence of HF hospitalization was higher in the hospital follow-up group than in the collaborative follow-up group (25.5% vs. 21.3%, $P = 0.02$). The risk of HF hospitalization was higher in the hospital follow-up group than in the collaborative follow-up group (HR: 1.19, 95% CI: 1.01–1.39, $P = 0.04$).

Conclusions In patients hospitalized for AHF, 41.5% received collaborative follow-up after discharge. The risk of HF hospitalization was higher in the hospital follow-up group than in the collaborative follow-up, although risk of the primary outcome, all-cause death, and cardiovascular death were similar between groups.

Keywords Post discharge follow-up; Heart failure; Collaborative follow-up; Transitional care; Clinical outcome

Received: 3 May 2022; Revised: 31 August 2022; Accepted: 29 September 2022

*Correspondence to: Takao Kato, MD, Department of Cardiovascular Medicine, Kyoto University Graduate School of Medicine, Kyoto, Japan, 54 Shogoin Kawahara-cho, Sakyo-ku, Kyoto, 606-8507, Japan. Phone: +81-75-751-3190; Fax: +81-75-751-3203. Email: tkato75@kuhp.kyoto-u.ac.jp

Introduction

The widening gap between healthy life expectancy and average life expectancy for patients with heart failure (HF) increases the demand for medical and long-term care and makes it more difficult for them to continue living in their community. Management of HF requires a multifaceted approach, and in Western countries, multidisciplinary HF disease management has been practised since the 1990s.¹ In Europe and the USA, appropriate transitional care has been reported to improve quality of life and outcomes.^{2,3} Seamless transitional care in collaboration with primary care physicians is expected to become the standard multidisciplinary approach and to improve HF disease management.^{4,5} For example, it is reported that about 85% of primary care physicians in Switzerland and 78.3% of family physicians in Ontario are collaborating with cardiologists in the management of HF.^{6,7}

In response to this situation, the Japanese government is promoting the establishment of 'community-centered medical care' in which medical care, nursing care, and welfare are provided in an integrated manner ('Integrated Community Care System') to enable people to continue living in their familiar communities, in contrast to 'hospital-centered medical care'.^{8,9} Despite government policies, collaboration between the communities and the hospitals is still insufficient. The costs of healthcare are covered by the social insurance system, which allows patients to receive high-quality healthcare at relatively low cost, anytime and anywhere.⁹ In addition, there is no distinction in Japan between primary care and secondary care, which provide inpatient and specialized outpatient care, respectively, and there is no gatekeeping system.⁹ Patients can go directly to secondary medical facilities even for minor symptoms. Many patients discharged from acute care hospitals seek follow-up care by going to the outpatient departments of acute care hospitals, at the discretion of the attending physician or at the patient's request. In Japan, the treatment pathway and order of treatment in collaborations between hospitals and clinics are similar to that in Europe and the USA, as specialists are closely involved. However, the division of roles in other care areas is not clearly defined, and an enforceable collaboration model between hospitals and clinics has not yet been established.

In the present study, we defined collaborative follow-up as follows: (i) Both the hospital and clinic follow up the patients regularly, but the hospital conducts follow-ups less frequently; (ii) only the clinic follows up the patients regularly, and the hospital follows up when requested by the clinic. It is important for transitional care that the collaborators share information and co-operate with each other to ensure a seamless follow-up. We hypothesized that collaborative follow-up be-

tween hospitals with index hospitalization and clinics would improve outcomes compared with follow-up at hospitals with index hospitalization only. Therefore, to provide helpful information for collaboration between hospitals and clinics for patients with HF in Japan, we conducted this study using a large Japanese observational database of patients with AHF, with the following objectives: first, to determine the status of collaboration between hospitals and clinics for patients with AHF in Japan and to compare patient characteristics and clinical outcomes; and second, as a subanalysis, to compare patient characteristics and clinical outcomes of patients aged ≥ 65 years at different follow-up points. The reason 65 was set as the cut-off is that this is the age of the elderly as defined by the WHO,¹⁰ and the age at which Japan's social insurance system, the long-term care insurance system, applies to the elderly.¹¹ The results of this study are expected to increase awareness of current policies and help establish a transitional care system for patients with HF that is appropriate for the Japanese medical and social systems.

Methods

Study design

This retrospective, multicentre, cohort study included patients with data in a multicentre registry, the Kyoto Congestive Heart Failure (KCHF) registry. KCHF is a physician-initiated, prospective, observational, multicentre cohort study that enrolled consecutive patients who were hospitalized for AHF between 1 October 2014 and 31 March 2016.¹²

Setting and population

Patients were admitted to 19 rural and urban facilities with different numbers of beds, including a secondary emergency hospital that accepts critically ill patients, including those requiring hospitalization and surgery, on a 24-h basis, and a tertiary emergency hospital that provides more advanced emergency care. The details of the KCHF study design and patient enrolment are described in detail elsewhere.^{12,13,14} Briefly, we enrolled consecutive patients with AHF who were admitted to participating hospitals, diagnosed according to the modified Framingham criteria, and who received intravenous diuretics, vasodilators, and inotropic drugs specific for HF within 24 h of admission. Clinical follow-up data at 1 year were collected by the attending physician or research collaborator at the participating hospitals, who confirmed survival by phone or in writing, and events such as hospitalizations

during the 1 year were collected from the medical records. In this study, we investigated differences in baseline characteristics and clinical outcomes of patients with AHF who were discharged home and only followed up at the hospital for index AHF hospitalization (hospital follow-up group) and those who were followed up at clinics or general hospitals in collaboration with the hospitals used at the index AHF hospitalization (collaborative follow-up group). We defined collaborative follow-up as follows: (i) Both the hospital and clinic follow up the patients regularly, but the hospital conducts follow-ups less frequently; (ii) only the clinic follows up the patients regularly, and the hospital follows up when requested by the clinic (Table S1). The physicians in the hospital follow-up group were cardiologists, whereas the clinic physicians in the collaborative follow-up group and the physicians in other hospitals are often general internists, some of whom may be cardiologists. Of the 4056 patients enrolled in the KCHF registry, those who died during the index hospitalization, had no information on their post-discharge residence type, were transferred to other hospitals, were discharged to nursing homes, or had no information on their follow-up destination after discharge were excluded. Consequently, the present study included 2862 patients (Figure 1).

Ethics

The study conformed to the principles outlined in the Declaration of Helsinki. The study protocol was approved by the ethical committees of the Kyoto University Hospital (local identifier: E2311) and each participating hospital. A waiver for written informed consent from each patient was granted by the Institutional Review Boards of Kyoto University and each participating centre. This study also met the conditions of the Japanese ethical guidelines for medical and health

research involving human subjects.¹⁵ We disclosed the details of the present study to the patients using an opt-out method, and the notice clearly informed patients of their right to refuse enrolment.

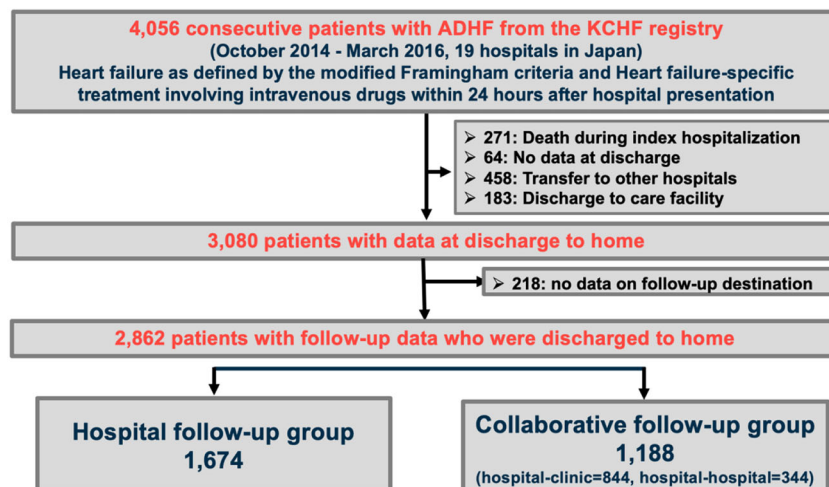
Definitions

Based on the four levels of living independence used in Japanese long-term care insurance, we classified the functional levels of the patients into four levels: ambulatory (including those who use aids, such as sticks), wheelchair-ridden outdoors only, wheelchair-ridden both indoors and outdoors, and bedridden.¹³ Functional decline during index AHF hospitalization was defined as a decline in at least one activity level from admission to discharge.¹⁶ In-hospital worsening of HF was defined as the requirement for additional administration of intravenous HF drugs, haemodialysis, or mechanical circulatory or respiratory support after the patient's condition had improved and at least 24 h after initiation of therapy.^{12,13} Cognitive dysfunction was subjectively judged by the attending physician. Detailed definitions of the baseline clinical characteristics have been provided in the Supporting Information.

Outcome measures

The primary outcome measure was a composite of all-cause death or HF hospitalization within 1 year after discharge. The secondary outcome measures were the individual components of the primary composite endpoint and cardiovascular death. HF hospitalization was defined as hospitalization due to worsening of HF that required intravenous drug therapy.¹² Cardiovascular death was defined as HF death, sudden cardiac death, vascular death, and other cardiac deaths.

Figure 1 Study flowchart.



Statistical analysis

Categorical variables are presented as numbers with percentages and were compared using the χ^2 test. Continuous variables are expressed as the mean with standard deviation, or the median with interquartile range (IQR), and were compared using Student's *t*-test when normally distributed or the Wilcoxon rank-sum test when not normally distributed.

We explored the factors independently associated with hospital follow-up using the multivariable logistic regression models. We included those potential candidate factors that had *P* values < 0.1 in the univariate analysis.

We used the Kaplan–Meier method to estimate the cumulative 1-year incidence of the outcome measures and assessed the differences using a log-rank test. The risk of the collaborative follow-up group relative to the hospital follow-up group for all the outcome measures are presented as hazard ratio (HR) with 95% confidence interval (CI) using multivariable Cox proportional hazards models. We incorporated the following 23 clinically relevant risk-adjusted variables in the multivariable Cox models as listed in *Table 1*, and as reported previously^{13,14}: 80 years and older, female, body mass index (BMI) ≤ 22 kg/m², acute coronary syndrome, previous history of hospitalizations for HF, atrial fibrillation or flutter, hypertension, diabetes mellitus, chronic lung disease, previous myocardial infarction, previous stroke, current smoking, living alone, walking ability, systolic blood pressure <90 mmHg at admission, heart rate <60 beats/min at admission, patients with HF with reduced ejection fraction (HFrEF), anaemia, estimated glomerular filtration rate <30 mL/min/1.73 m² at admission, blood albumin levels <3.0 g/dL at admission, blood sodium levels <135 mEq/L at admission, β -blockers with HFrEF at discharge, and ACE-I or ARB with HFrEF at discharge.

To determine the extent to which the percentage of collaborated follow-up varied by facility, we calculated the percentage of collaborated follow-up for each facility participating in this study. In the subanalysis, a comparison of patient background factors and a survival analysis were also performed in the group of patients aged ≥ 65 years.

All statistical analyses were performed by two investigators (K. Washida, T. Kato) and a statistician (T. Morimoto) using JMP Pro V.15.2.0. Two-tailed *P* values < 0.05 were considered statistically significant.

Results

Baseline clinical characteristics

Of the 2862 patients registered, 1674 (58.5%) were in the hospital follow-up group, and 1188 (41.5%) were in the col-

laborative follow-up group. Collaborative follow-up was performed at a clinic for 844 patients and at general hospital for 344 patients. The median duration of the index hospital stay was 15 (IQR: 11–22) days in the overall cohort; 16 (IQR: 11–23) days in the hospital follow-up group; and 15 (IQR: 10–21) days in the collaborative follow-up group (*P* < 0.001). Patients in the collaborative follow-up group were older, were more often women, were less likely to be able to walk independently, and had a higher proportion of BMI ≤ 22 kg/m² compared with patients in the hospital follow-up group. Regarding the social background data, there were no between-group differences in the proportions of people living alone or on public assistance. However, the people living with the patients differed between groups. Patients in the collaborative follow-up group were more likely to live with younger generations (children or grandchildren) than those in the hospital follow-up group. The aetiology of HF differed by group. Patients in the collaborative follow-up group were more likely to have coronary artery disease and hypertensive heart disease and less likely to have cardiomyopathy and valvular disease than those in the hospital follow-up group. In the classification of HF based on left ventricular ejection fraction, the collaborative follow-up group had fewer patients with HFrEF and more patients with HF with preserved ejection fraction (HFpEF) than the hospital follow-up group. Fewer patients in the collaborative follow-up group had defibrillator with cardiac resynchronization therapy (CRT-D) or a cardiac resynchronization therapy-pacemaker (CRT-P) implanted than in the hospital follow-up group. The collaborative follow-up group had less residual fatigue at discharge than the hospital follow-up group had, but there were no differences in the rates of residual dyspnoea on exertion, residual loss of appetite, or New York Heart Association (NYHA) classifications III and IV. Patients in the collaborative follow-up group had a higher prevalence of hypertension and cognitive dysfunction and a lower prevalence of history of hospitalization for HF than those in the hospital follow-up group. At admission, patients in the collaborative follow-up group had lower haemoglobin levels and estimated glomerular filtration rates (eGFR) than those in the hospital follow-up group. The levels of brain natriuretic peptide (BNP), N-terminal pro BNP (NT-proBNP), creatinine, albumin, and sodium on admission were not different between the two groups (*Table 1*).

In-hospital events and the status at discharge

There were no differences in the incidences of in-hospital worsening of HF, stroke, or infection, or frequency of increases in serum creatinine levels >0.3 mg/dL between the groups (*Table 1*). Patients in the collaborative follow-up group had lower haemoglobin, eGFR, and serum albumin levels at discharge and had residual fatigue less

Table 1 Patient characteristics, laboratory test results, and medications

Variables	Hospital follow-up (N = 1674, 58.5%)	Collaborative follow-up (N = 1188, 41.5%)	P value	Number of patients analysed
Clinical characteristics				
Age (years)	76 (67–83)	81 (74–86)	<0.001	2862
Age ≥80 years ^{a,b}	641 (38.3)	657 (55.3)	<0.001	2862
Women ^{a,b}	650 (38.8)	525 (44.2)	0.004	2862
BMI (kg/m ²)	22.9 (20.5–25.6)	22.4 (20.0–25.3)	0.004	2780
BMI ≤22 kg/m ^{2a,b}	654 (40.0)	527 (46.1)	0.002	2780
Causes of heart failure				
Acute coronary syndrome ^a	94(5.6)	63 (5.3)	0.72	2862
Coronary artery disease other than acute coronary syndrome	451 (26.9)	352 (29.6)	0.11	2862
Cardiomyopathy ^b	316 (18.9)	155 (13.1)	<0.001	2862
Hypertensive heart disease ^b	368 (22.0)	323 (27.2)	0.001	2862
Valvular disease	316 (18.9)	196 (16.5)	0.10	2862
Others	129 (7.7)	99 (8.3)	0.91	2862
Medical history				
Heart failure hospitalization ^{a,b}	664 (39.7)	360 (30.3)	<0.001	2862
Atrial fibrillation or flutter ^b	695 (41.5)	508 (42.8)	0.51	2862
Hypertension ^{a,b}	1164 (69.5)	909 (76.5)	<0.001	2862
Diabetes mellitus ^a	652 (39.0)	462 (38.9)	1.00	2862
Chronic lung disease ^a	215 (12.8)	163 (13.7)	0.50	2862
Myocardial infarction ^a	386 (23.1)	299 (25.2)	0.20	2862
Stroke ^{a,b}	230 (13.7)	204 (17.2)	0.013	2862
Cognitive dysfunction ^b	151 (9.0)	207 (17.4)	<0.001	2862
Current smoking ^a	253 (15.3)	156 (13.3)	0.13	2828
Social background				
Living alone ^a	368 (22.0)	250 (21.0)	0.58	2862
Living with a spouse	790(47.2)	577(48.6)	0.47	2862
Living with a child ^b	581(34.7)	512(43.1)	<0.001	2861
Living with a sibling ^b	41(2.5)	45(3.8)	0.045	2861
Living with parents	79(4.7)	48(4.0)	0.41	2861
Living with grandchildren ^b	65(3.9)	71(6.0)	0.01	2861
Living with non-relatives ^b	49(2.9)	52(4.4)	0.04	2860
Public assistance	97 (5.8)	63 (5.3)	0.62	2862
Long-term care insurance for aged 65 and over	342 (57.9)	387 (65.7)	0.006	1180
Functional status before admission				
Physical activity				
Ambulatory state ^a	1469 (88.5)	954 (81.0)	<0.001	2838
Vital signs and symptoms on presentation				
Systolic BP < 90 mmHg ^a	45 (2.7)	26 (2.2)	0.46	2855
HR < 60 beats/min ^{a,b}	97 (5.8)	89 (7.6)	0.08	2844
BT ≥ 37.5°C ^b	75 (4.7)	71 (6.2)	0.08	2731
NYHA class IV	738 (44.2)	559 (47.2)	0.12	2852
Test on admission				
LVEF			0.005	2855
HFrEF (LVEF < 40%) ^{a,b}	695 (41.7)	424 (35.7)	0.001	2855
HFmrEF (40% ≤ LVEF < 50%)	305 (18.3)	230 (19.4)	0.47	2855
HFpEF (LVEF ≥ 50%) ^b	668 (40.1)	533 (44.9)	0.01	2855
Haemoglobin (g/dL)	11.9 ± 2.43	11.6 ± 2.29	0.002	2855
Anaemia (men <13 g/dL, women <12 g/dL) ^{a,b}	1028 (61.6)	772 (65.0)	0.07	2855
BNP (pg/mL)	700.9 (386.2–1210.9)	692.8 (378.9–1219.7)	0.96	2537
NT-proBNP (pg/mL)	4958 (2512.5–11042.5)	4920 (2514.8–10921.3)	0.99	501
BNP > 695.7 (pg/mL) or NT-proBNP > 4958 (pg/mL)	820 (49.9)	583 (49.5)	0.85	2823
Creatinine (mg/dL)	1.1(0.83–1.6)	1.09 (0.82–1.58)	0.92	2857
eGFR (mL/min/1.73 m ²)	46.0 (30.4–62.9)	45.0 (29.8–59.7)	0.048	2857
eGFR <30 mL/min/1.73 m ² ^a	407 (24.4)	300 (25.2)	0.60	2857
Albumin (g/dL)	3.53 ± 0.48	3.53 ± 0.48	0.81	2772
Albumin <3.0 g/dL ^a	178 (11.0)	129 (11.2)	0.90	2772
Sodium (mEq/L)	139.2 ± 4.08	139.4 ± 3.98	0.12	2851
Sodium <135 mEq/L ^a	191 (11.5)	120 (10.1)	0.27	2851
Test at discharge				
Haemoglobin (g/dL)	11.8 ± 2.26	11.5 ± 2.13	0.004	2800
Anaemia (men <13 g/dL, women <12 g/dL)	1088 (66.3)	798 (68.9)	0.15	2800

(Continues)

Table 1 (continued)

Variables	Hospital follow-up (N = 1674, 58.5%)	Collaborative follow-up (N = 1188, 41.5%)	P value	Number of patients analysed
BNP (pg/mL)	257.0 (131.4–498.6)	271.6 (139.0–516.0)	0.46	1830
NT-proBNP (pg/mL)	1875 (712–4054)	1794 (754.6–4058.3)	0.96	333
BNP > 263.7 (pg/mL) or NT-proBNP >1825 (pg/mL)	607 (49.5)	414 (51.3)	0.44	2034
Creatinine (mg/dL)	1.12 (0.86–1.57)	1.14 (0.88–1.6)	0.37	2821
eGFR (mL/min/1.73 m ²)	44.7 (29.9–60.9)	42.3 (29.4–57)	0.003	2821
eGFR <30 mL/min/1.73 m ²	414 (25.1)	300 (25.7)	0.73	2821
Albumin (g/dL)	3.45 ± 0.48	3.37 ± 0.46	<0.001	2496
Albumin <3.0 g/dL	223 (15.4)	183 (17.5)	0.15	2496
Sodium (mEq/L)	138.4 ± 3.48	138.6 ± 3.46	0.16	2813
Sodium <135 mEq/L	194 (11.8)	137 (11.8)	1.00	2813
Symptoms at discharge				
Dyspnoea on exercise	422 (26.0)	293 (25.3)	0.72	2781
Fatigue ^b	241 (15.8)	138 (12.1)	0.007	2660
Loss of appetite	150 (9.4)	95 (8.2)	0.31	2753
NYHA class III or IV	75 (4.6)	43 (3.7)	0.26	2796
Events during hospitalization				
Worsening heart failure	263 (15.7)	195 (16.4)	0.64	2862
An increase in serum creatinine levels ≥0.3 mg/dL	542 (32.8)	401 (34.2)	0.47	2825
Stroke	14 (0.8)	10 (0.8)	1.00	2862
Infection	140 (8.4)	83 (7.0)	0.18	2862
Condition at discharge				
Functional status				
Ambulatory ^b	1456 (87.5)	939 (79.7)	<0.001	2842
Functional decline ^b	90 (5.5)	97 (8.3)	0.003	2818
Medications at discharge				
β-blocker in HFrEF ^a	572 (82.3)	339 (81.4)	0.34	1119
ACE-I or ARB in HFrEF ^a	486 (69.9)	281 (66.3)	0.21	1119
Implantable devices at discharge				
CRT-D or CRT-P ^b	56 (3.4)	24 (2.0)	0.03	2862
ICD	38 (2.3)	24 (2.0)	0.65	2862
Length of hospital stay (days)	16 (11–23)	15 (10–21)	<0.001	2862
Length of hospital stay >15 days ^b	854 (51.0)	533 (44.9)	0.001	2862

ACE-I, angiotensin-converting enzyme inhibitor; ARB, angiotensin receptor blocker; BMI, body mass index; BNP, brain-type natriuretic peptide; BP, blood pressure; BT, body temperature; CRT-D, Defibrillator with cardiac resynchronization therapy; CRT-P, Cardiac resynchronization therapy- pacemaker; eGFR, estimated glomerular filtration rate; HFmrEF, heart failure with mid-range ejection fraction; HFpEF, heart failure with preserved ejection fraction; HFrEF, heart failure with reduced ejection fraction; HR, heart rate; ICD Implantable cardioverter-defibrillator; LVEF, left ventricular ejection fraction; NT-proBNP, N-terminal-proBNP; NYHA, New York Heart Association. Continuous variables are presented as mean ± standard deviation or median with interquartile range. Categorical variables are presented as number (percentage).

^aRisk-adjusting variables selected for the multivariable Cox proportional hazards models.

^bPotential factors association with hospital follow-up selected in the multivariable logistic regression models.

often than those in the hospital follow-up group. There were no significant differences in serum BNP and NT-pro BNP levels at discharge between the two groups (Table 1).

Factors related to hospital follow-up

We performed a logistic regression analysis with 23 adjustment factors to identify factors associated with hospital follow-up. Previous hospitalization for HF was found to be most closely associated with hospital follow-up, followed by length of hospital stay longer than 15 days. Conversely, ≥80 years of age, hypertension, and cognitive dysfunction were found to be associated with collaborative follow-up (Table 2).

Prevalence of hospital follow-up and collaborative follow-up among the participating centres

The prevalence of hospital follow-up varied from 32.6 to 92.3%, depending on the hospital facility, across the centres participating in this study (Figure 2). In terms of the age quartile, the prevalence of collaborative follow-up incrementally increased as the patients became older (Figure 3).

Long-term outcomes: Hospital follow-up group vs. collaborative follow-up group

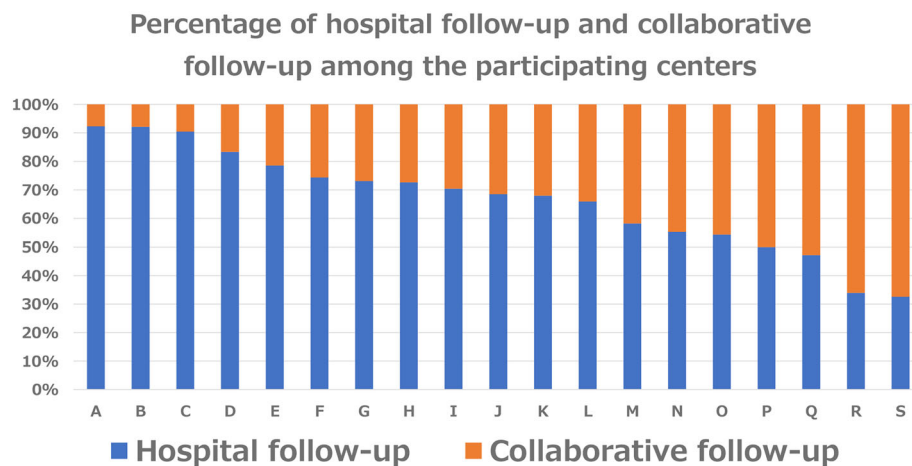
The follow-up rate at 1 year was 95.6%. The cumulative 1-year incidence of the primary outcome measure (a compos-

Table 2 Factors independently associated with hospital follow-up

Variables	Adjusted OR	95% CI	P value
Age ≥ 80 years	0.53	(0.44–0.65)	<0.001
Women	1.03	(0.86–1.24)	0.71
BMI ≤ 22 kg/m ²	0.88	(0.74–1.05)	0.14
Cardiomyopathy as cause of heart failure	1.11	(0.87–1.42)	0.46
Hypertensive heart disease as cause of heart failure	1.00	(0.82–1.24)	0.93
Previous hospitalization for heart failure	1.69	(1.41–2.03)	<0.001
Hypertension	0.76	(0.62–0.93)	0.01
Onset stroke during hospitalization	0.69	(0.26–1.83)	0.46
Cognitive dysfunction	0.65	(0.50–0.86)	0.002
Living with a child before admission	0.90	(0.75–1.08)	0.25
Living with a sibling before admission	0.70	(0.40–1.24)	0.22
Living with a grandchildren before admission	0.83	(0.54–1.29)	0.41
Living with a non-relatives before admission	1.02	(0.61–1.72)	0.93
HR < 60 beats/min on presentation	0.91	(0.65–1.27)	0.58
BT $\geq 37.5^\circ\text{C}$ on presentation	0.84	(0.58–1.22)	0.36
HFrEF (LVEF <40%)	0.98	(0.77–1.26)	0.89
HFpEF (LVEF $\geq 50\%$)	0.99	(0.78–1.26)	0.96
Anaemia on admission	1.00	(0.83–1.21)	0.96
Residual fatigue at discharge	1.26	(0.98–1.62)	0.07
Residual ambulatory function at discharge	1.24	(0.91–1.69)	0.18
Functional decline	0.90	(0.58–1.38)	0.62
CRT-P or CRT-D implantation	1.03	(0.58–1.82)	0.92
Length of hospital stay >15 days	1.31	(1.11–1.55)	0.002

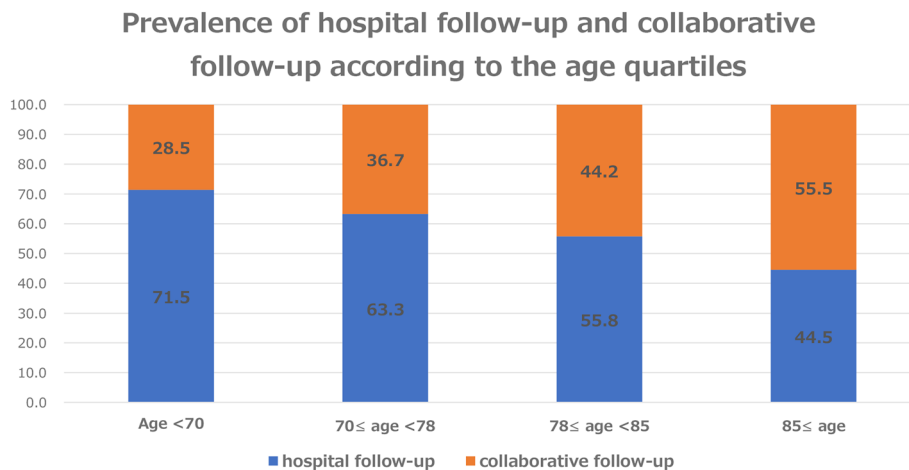
BMI, body mass index; BP, blood pressure; BT, body temperature; CI, confidence interval; CRT-D, defibrillator with cardiac resynchronization therapy; CRT-P; cardiac resynchronization therapy-pacemaker; HFpEF, heart failure with preserved ejection fraction; HFrEF, heart failure with reduced ejection fraction; HR, heart rate; LVEF, left ventricular ejection fraction; OR, odds ratio.

We explored the factors independently associated with hospital follow-up in the multivariable logistic regression models. We included those potential candidate factors that had *P* value < 0.1 in the univariate analysis.

Figure 2 Prevalence of hospital follow-up and collaborative follow-up among the participating centres.

ite of all-cause death or HF hospitalization) was similar between the hospital and collaborative follow-up groups (31.6% vs. 29.6%, *P* = 0.51) (Figure 4A). Even after adjusting for confounders, the difference in risk for patients in the hospital follow-up group relative to those in the collaborative follow-up group remained insignificant for the primary outcome measure (Table 3). The cumulative 1-year incidence of all-cause death was similar between the two groups (13.1% vs. 13.9%, *P* = 0.35) (Figure 4B). After adjusting for confounders, the difference in risk of all-cause death for patients

in the hospital follow-up group relative to those in the collaborative follow-up group remained similar (Table 3). The cumulative 1-year incidence of cardiovascular death was similar between the two groups (8.4% vs. 8.2%, *P* = 0.33) (Figure 4C). After adjusting for confounders, the risk of cardiovascular death for patients in the hospital follow-up group relative to those in the collaborative follow-up group remained similar (Table 3). The cumulative 1-year incidence of HF hospitalization was higher in the hospital follow-up group than in the collaborative follow-up group (25.5% vs. 21.3%, *P* = 0.02) (Fig-

Figure 3 Prevalence of hospital follow-up and collaborative follow-up according to the age quartiles.

ure 4D). After adjusting for confounders, the risk of HF hospitalization in patients in the hospital follow-up group relative to those in the collaborative follow-up group remained higher (Table 3).

Subanalysis of patients aged ≥65 years

The proportions of patients ≥65 years of age in the hospital and collaborative follow-up groups were comparable with that in the overall study population: 1350 (55.8%) patients and 1071 (44.2%) patients, respectively. The use of long-term care insurance services was higher in the collaborative follow-up group than in the hospital follow-up group when limited to those ≥65 years of age. In patients ≥65 years of age, there were no differences in BMI, stroke history, HFrEF and HFpEF distribution, haemoglobin levels at admission and discharge, or eGFR between the groups and the overall study population. Other differences in the baseline characteristics were consistent with the overall study population (Table S2).

The cumulative 1-year incidence of the primary outcome measure (a composite of all-cause death or HF hospitalization) was higher in the hospital follow-up group than in the collaborative follow-up group (35.4% vs. 30.6%, $P = 0.04$) (Figure S1). The cumulative 1-year incidence of all-cause death was similar between the 2 groups (15.3% vs. 14.7%, $P = 0.96$) (Figure S1). The cumulative 1-year incidence of HF hospitalization was higher in the hospital follow-up group than in the collaborative follow-up group (28.5% vs. 21.8%, $P < 0.001$) (Figure S1).

Among patients ≥65 years of age, after adjusting for confounders, the risk of the primary outcome measure and HF hospitalization in patients in the hospital follow-up group relative to those in the collaborative follow-up group remained higher (Figure S1). After adjusting for confounders, the risk of

all-cause death in patients in the hospital follow-up group relative to those in the collaborative follow-up group remained similar (Figure S1).

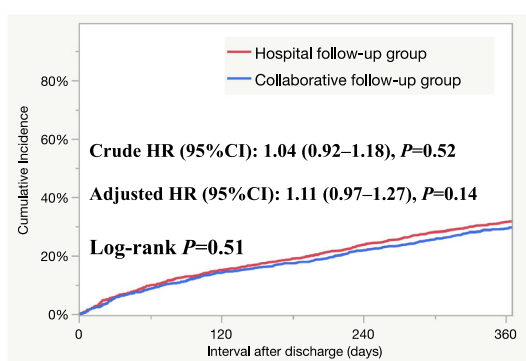
Discussion

The main findings of the present study are as follows: (i) Among patients with AHF who were discharged to go home, 41.5% underwent collaborative follow-up with a clinic or general hospital. (ii) Compared with the hospital follow-up group, more patients in the collaborative follow-up group were over 80 years of age, had hypertension complications, and had cognitive dysfunction complications. Conversely, patients receiving hospital follow-up were characterized by previous HF hospitalization and a longer hospital stay. (iii) The risk of primary outcome measure and all-cause death in patients in the hospital follow-up group relative to those in the collaborative follow-up group remained similar. (iv) The risk of HF hospitalization in patients in the hospital follow-up group relative to those in the collaborative follow-up group remained higher.

This is the first large-scale clinical study to clarify follow-up status after home discharge in patients hospitalized for AHF, focusing on the collaborative follow-up between the hospital at index hospitalization and a clinic or general hospital in Japan. In this cohort study, only 41.5% of patients underwent collaborative follow-up. The results of this study are largely consistent with a survey of hospital cardiologists that reported that 42% of cardiologists collaborate with general practitioners for the treatment and management of patients with HF after discharge from the hospital,¹⁷ although the prevalence of collaborative follow-up varied widely across facilities (Figure 2). Our study showed that the collaborative follow-up rate for Japanese patients with acute heart failure

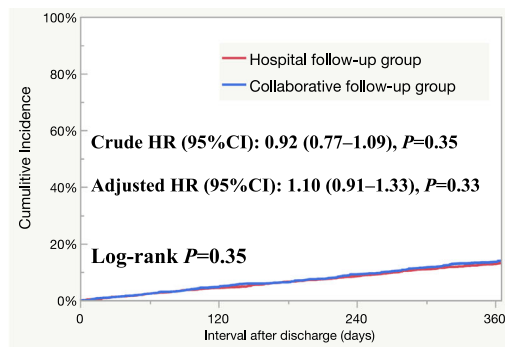
Figure 4 (A) Kaplan–Meier curves for the composite of all-cause death or heart failure hospitalization. (B) Kaplan–Meier curves for all-cause death. (C) Kaplan–Meier curves for cardiovascular death. (D) Kaplan–Meier curves for heart failure hospitalization.

(A) Kaplan–Meier curves for the composite of all-cause death or heart failure hospitalization



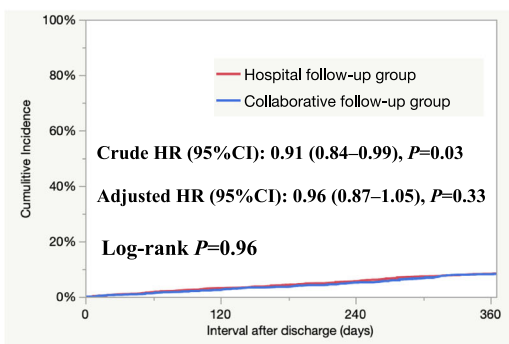
Interval	0-day	60-day	90-day	180-day	1-year
Hospital follow-up group					
N of patients with at least 1 event		162	211	315	523
N of patients at risk	1674	1504	1454	1343	1026
Cumulative incidence		9.7%	12.7%	18.9%	31.6%
Collaborative follow-up group					
N of patients with at least 1 event		100	131	201	340
N of patients at risk	1188	1062	1029	952	722
Cumulative incidence		8.6%	11.3%	17.3%	29.6%

(B) Kaplan–Meier curves for all-cause death



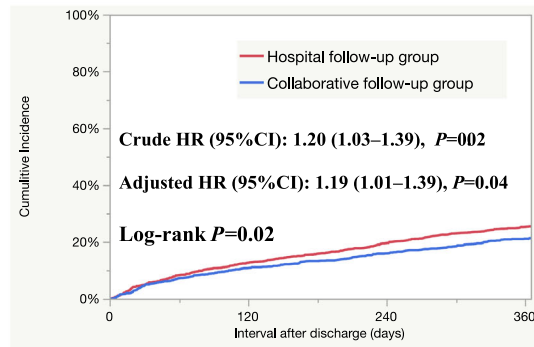
Interval	0-day	60-day	90-day	180-day	1-year
Hospital follow-up group					
N of patients with at least 1 event			39	60	108
N of patients at risk	1674	1625	1603	1540	1304
Cumulative incidence		2.3%	3.6%	6.5%	13.1%
Collaborative follow-up group					
N of patients with at least 1 event		27	41	73	159
N of patients at risk	1188	1134	1116	1076	878
Cumulative incidence		2.3%	3.5%	6.3%	13.9%

(C) Kaplan–Meier curves for cardiovascular death



Interval	0-day	60-day	90-day	180-day	1-year
Hospital follow-up group					
N of patients with at least 1 event		28	41	71	135
N of patients at risk	1674	1625	1603	1540	1304
Cumulative incidence		1.7%	2.5%	4.3%	8.4%
Collaborative follow-up group					
N of patients with at least 1 event		15	22	41	91
N of patients at risk	1188	1134	1116	1076	878
Cumulative incidence		1.3%	1.9%	3.6%	8.2%

(D) Kaplan–Meier curves for heart failure hospitalization



Interval	0-day	60-day	90-day	180-day	1-year
Hospital follow-up group					
N of patients with at least 1 event			137	175	259
N of patients at risk	1674	1504	1454	1343	1026
Cumulative incidence		8.3%	10.6%	15.8%	25.5%
Collaborative follow-up group					
N of patients with at least 1 event		83	103	151	235
N of patients at risk	1188	1062	1029	952	722
Cumulative incidence		7.2%	8.9%	13.3%	21.3%

(AHF) is lower than that reported overseas.^{6,7} Japan is a country without a well-developed primary care system, and hospitals with index hospitalization also have outpatient functions,

and it has been taken for granted that patients receive follow-up care at the hospital of index hospitalization after discharge. The attending physician at admission decides

Table 3 Clinical outcomes

	Hospital follow-up N of patients with event/ N of patients at risk [cumulative 1-year incidence (%)]	Collaborative follow-up N of patients with event/ N of patients at risk [cumulative 1-year incidence (%)]	Unadjusted hazard ratio (95% CI)	P value	Adjusted hazard ratio (95% CI)	P value
A composite of all-cause death or heart failure hospitalization	523/1674 (31.6%)	340/1188 (29.6%)	1.04 (0.92–1.18)	0.52	1.11 (0.97–1.27)	0.14
All-cause death	216/1674 (13.1%)	159/1188 (13.9%)	0.92 (0.77–1.09)	0.35	1.10 (0.91–1.33)	0.33
Cardiovascular death	135/1674 (8.4%)	91/1188 (8.2%)	0.91 (0.84–0.99)	0.03	0.96 (0.87–1.05)	0.33
Heart failure hospitalization	408/1674 (25.5%)	235/1188 (21.3%)	1.20 (1.03–1.39)	0.02	1.19 (1.01–1.39)	0.04

CI, confidence interval

whether to conduct collaborative follow-up after discharge, taking into consideration the policy of the hospital with index hospitalization, the number of hospitals and clinics in the residential area, and the patient's wishes and condition. Although the length of hospital stay for patients with AHF in Japan is longer than that in Western countries,^{13,18} the hospitalization rate within 30 days after discharge is 4.6–5.5%, which is lower than that in Western countries.^{19,20} This may be one of the reasons why post-discharge follow-up style has not been discussed in Japan, unlike in Western countries where transitional care has been recommended to reduce 30-day readmission.²¹ This study also revealed large differences in the rates of collaborative follow-up among facilities. Patient characteristics associated with hospital follow-up alone do not explain the differences between facilities. Many factors not examined in this study may contribute to differences between facilities, including hospital location, the number of clinics in the patient's area of residence, and the relationship between the hospital and the clinic.

This paper highlights two key points: (i) The risk of primary outcome, all-cause death, and cardiovascular death were unexpectedly similar between hospital and collaborative follow-up; (ii) the risk of HF hospitalization in hospital follow-up is higher compared with collaborative follow-up, as expected. As for the first point, our results differed from those of two U.S. reports, which showed that collaborative care by cardiologists and general internists reduced the risk of 1-year mortality compared with follow-up by general internists alone.^{22,23} Unlike the U.S. report, there are several possible reasons why the risk of all-cause death and cardiovascular death was not reduced in the clinic follow-up group. One is the difference in patients' backgrounds between the two groups in the present study. The patients in the collaborative follow-up group tended to be older, to have cognitive dysfunction, and to have higher rates of co-morbidities than those in the hospital follow-up group. Moreover, these factors have been reported to be independent prognostic determinants of HF.²⁴ Although we adjusted for these factors in our analysis, we could not rule out the possibility that important clinical differences not included in the database, or other unmeasured confounding factors may have influenced mortality more than the collaborated follow-up intervention. The second reason is that the main causes of death differ between Japan and other countries.^{25,26,27} The proportion of non-cardiovascular deaths is higher in Japan than it is in other countries,^{25,26,27} which might hamper the beneficial effect of collaboration with hospitals and clinics, possibly due to differences in demographics and healthcare delivery systems. In addition, the risk of all-cause mortality and cardiovascular death was not different between hospital follow-up and collaborative follow-up.

In contrast, the risk of hospitalization for heart failure was lower in the collaborative follow-up group than in the hospital follow-up group. As the frequency of monitoring

and timely engagement with healthcare providers reportedly contributes to improved outcomes,^{28,29,30} the follow-up structure of collaboration may have influenced the outcomes of HF patients. In Japan, a family doctor at a clinic treats a patient with HF more frequently, and, if hospitalization is deemed necessary, the patient is referred to an inpatient index hospital that provides advanced secondary care to prevent hospitalization for HF. The other reason may be the differences in the threshold of hospitalization between the collaborative follow-up and the hospital follow-up. In the case of an outpatient clinic at a secondary care facility that is an inpatient facility, when a patient with heart failure is considered to need hospitalization, the hospitalization can be coordinated immediately. On the other hand, in the case of a clinic, when a patient with HF is considered to need hospitalization, a referral must first be made to an inpatient index hospital that provides secondary care. In the case of clinic care, if the patient's HF worsens, the clinic may respond by increasing the frequency of home visits so that hospitalization can be avoided as much as possible. If patients are cognitively impaired or at high risk for delirium, care at home is more likely to be continued, rather than hospitalization. These results may involve multiple factors, including patient characteristics, hospital/clinic characteristics, and the interventions performed there, and thus require further study.

Although Japan has its own healthcare system and the rate of hospitalization for heart failure is lower than that in Western countries,^{18,19} it was found that in Japan, as in other countries, collaborative follow-up has the potential to reduce the risk of hospitalization for HF. This also indicates that collaborative follow-up between hospitals and clinics after discharge of AHF patients may be used as a quality indicator of medical care.^{31,32,33} Although further studies are needed to determine which patients and what type of collaborative follow-up improves prognosis, our data suggested that clinic-hospital collaboration for patients with HF in Japan can be implemented as transitional care to improve the prognosis of patients with AHF.

Limitations

This study has several limitations. First, 'general practitioners' are a relatively new specialty in Japan.³⁴ As such, primary care services are primarily provided by physicians in clinics, who have little to no background in general or family medicine. Instead, they tend to be certified as specialists in some subspecialty. Their role should not be regarded as equivalent to that of primary care physicians in other countries. We were unable to obtain detailed information on the specialties of the doctors and how they collaborated in delivering post-hospital care. Some patients in the hospital follow-up group may have had a family physician, which may have led

to misclassification of the patient's group. Second, there was no information about interventions other than those provided by the hospital or clinic after discharge (such as interventions by visiting nurses or participation in outpatient cardiac rehabilitation). Third, this study included only patients discharged home and excluded patients who were transferred or institutionalized. There is no uniform standard for determining inpatient transfers or institutionalizations, and the patients excluded from this study may have biased the study and may have influenced the results. Fourth, information on the type of post-discharge follow-up for patients with AHF was only examined at the time of discharge, and detailed information on whether the type of follow-up has changed since then was not available. Fifth, there was no information on the healthcare systems, such as the function of the hospitals and the number of hospitals and clinics in the areas of the facilities participating in the study or in the areas the patients' place of residence. Accessible medical facilities are an important condition for patients to choose a hospital or clinic, and geographical environmental factors may have affected the collaboration rate, which in turn may have affected clinical outcomes.

Conclusions

In patients hospitalized for AHF, 41.5% underwent collaborative follow-up after discharge. The risk of HF hospitalization in patients in the hospital follow-up group was higher than that in the collaborative follow-up, although there was no difference in primary outcome measures between the two groups.

Acknowledgements

We sincerely appreciate the staff of the KCHF registry and the other members of the participating centres.

Conflict of interest

None declared.

Funding

This study was supported by grant 18059186 from the Japan Agency for Medical Research and Development (Drs T. Kato, Kuwahara, and Ozasa). The founder had no role in the study design, collection, analysis or interpretation of the data, writing the manuscript, or the decision to submit the paper for publication.

IRB information

The study was approved by the institutional review boards of Kyoto University Graduate School of Medicine (approval number: E2311), Shiga General Hospital (approval number: 20141120-01), Tenri Hospital (approval number: 640), Kobe City Medical Center General Hospital (approval number: 14094), Hyogo Prefectural Amagasaki General Medical Center (approval number: Rinri 26-32), National Hospital Organization Kyoto Medical Center (approval number: 14-080), Mitsubishi Kyoto Hospital (approved 11/12/2014), Okamoto Memorial Hospital (approval number: 201503), Japanese Red Cross Otsu Hospital (approval number: 318), Hikone Municipal Hospital (approval number: 26-17), Japanese Red Cross Osaka Hospital (approval number: 392), Shimabara Hospital (approval number: E2311), Kishiwada City Hospital (approval number: 12), Kansai Electric Power Hospital (approval number: 26-59), Shizuoka General Hospital (approval number: Rin14-11-47), Kurashiki Central Hospital (approval number: 1719), Kokura Memorial Hospital (approval number: 14111202), Kitano Hospital (approval number: P14-11-012), and Japanese Red Cross Wakayama Medical Center (approval number: 328).

References

- Rich MW, Beckham V, Wittenberg C, Leven CL, Freedland KE, Carney RM. A multidisciplinary intervention to prevent the readmission of elderly patients with congestive heart failure. *N Engl J Med.* 1995; **333**: 1190–1195.
- Feltner C, Jones CD, Cené CW, Zheng ZJ, Sueta CA, Emmanuel JL. Transitional care interventions to prevent readmissions for persons with heart failure: A systematic review and meta-analysis. *Ann Intern Med.* 2014; **160**: 774–784.
- Albert NM, Barnason S, Deswal A, Hernandez A, Kociol R, Lee E, Paul S, Ryan CJ, White-Williams C. Transitions of care in heart failure: A scientific statement from the American Heart Association. *Circ Heart Fail.* 2015; **8**: 384–409.
- McDonagh TA, Metra M, Adamo M, Gardner RS, Baumbach A, Böhm M, Burri H, Butler J, Čelutkienė J, Chioncel O, Cleland JG. 2021 ESC guidelines for the diagnosis and treatment of acute and chronic heart failure. *Eur Heart J.* 2021; **42**: 3599–3726.
- Heidenreich PA, Bozkurt B, Aguilar D, Allen LA, Byun JJ, Colvin MM, Deswal A, Drazner MH, Dunlay SM, Evers LR, Fang JC, Fedson SE, Fonarow GC, Hayek SS, Hernandez AF, Khazanie P, Kittleson MM, Lee CS, Link MS, Milano CA, Nwacheta LC, Sandhu AT, Stevenson LW, Vardeny O, Vest AR, Yancy CW. 2022 AHA/ACC/HFSA guideline for the management of heart failure: A report of the American College of Cardiology/American Heart Association joint committee on clinical practice guidelines. *Circulation.* 2022; **145**: e895–e1032.
- Muntwyler J, Follath F. Management of heart failure in Switzerland. *Eur J Heart Fail.* 2000; **2**: 113–115.
- Boa Sorte Silva NC, Pulford RW, Lee DS, Petrella RJ. Heart failure management insights from primary care physicians and allied health care providers in southwestern Ontario. *BMC Fam Pract.* 2020; **21**: 8.
- Kuwabara M, Mori M, Komoto S. Japanese national plan for promotion of measures against cerebrovascular and cardiovascular disease. *Circulation.* 2021; **143**: 1929–1931.
- Arai H, Ouchi Y, Toba K, Endo T, Shimokado K, Tsubota K, Matsuo S, Mori H, Yumura W, Yokode M, Rakugi H, Ohshima S. Japan as the front-runner of super-aged societies: Perspectives from medicine and medical care in Japan. *Geriatr Gerontol Int.* 2015; **15**: 673–687.
- World Health Organization. *Men ageing and health: Achieving health across the life span.* 2001. http://apps.who.int/iris/bitstream/handle/10665/66941/WHO_NMH_NPH_01.2.pdf?sequence=1 (Accessed August 15, 2022)
- Health and Welfare Bureau for the Elderly Ministry of Health, Labour and Welfare. Long-term care insurance system of Japan. 2016. https://www.mhlw.go.jp/english/policy/care-welfare/care-welfare-elderly/dl/ltcisj_e.pdf. (Accessed August 15, 2022)
- Yamamoto E, Kato T, Ozasa N, Yaku H, Inuzuka Y, Tamaki Y, Kitai T, Morimoto T, Taniguchi R, Iguchi M, Kato M, Takahashi M, Jinnai T, Ikeda T, Nagao K, Kawai T, Komasa A, Nishikawa R, Kawase Y, Morinaga T, Kawashima T, Motohashi Y, Kawato M, Toyofuku M, Sato Y, Kuwahara K, Shioi T, Kimura T, KCHF study investigators. Kyoto congestive heart failure (KCHF) study: Rationale and design. *ESC Heart Fail.* 2017; **4**: 216–223.
- Yaku H, Ozasa N, Morimoto T, Inuzuka Y, Tamaki Y, Yamamoto E, Yoshikawa Y, Kitai T, Taniguchi R, Iguchi M, Kato M, Takahashi M, Jinnai T, Ikeda T, Nagao K, Kawai T, Komasa A, Nishikawa R, Kawase Y, Morinaga T, Su K, Kawato M, Sasaki K, Toyofuku M, Furukawa Y, Nakagawa Y, Ando K, Kadota K, Shizuta S, Ono K, Sato Y, Kuwahara K, Kato T, Kimura T, KCHF Study Investigators. Demographics, management, and in-hospital outcome of hospitalized acute heart failure syndrome patients in contemporary real clinical practice in Japan - observations from the prospec-

Supporting information

Additional supporting information may be found online in the Supporting Information section at the end of the article.

Table S1. Follow-up style details.

Table S2. Patient characteristics, laboratory test results, and medications in patients with ≥ 65 years of age.

Figure S1. Kaplan–Meier curve for a composite of all-cause death or heart failure hospitalization, all-cause death, and heart failure hospitalization compared between hospital follow-up group and collaborative follow-up group in patients ≥ 65 years of age.

Figure S1-A. Kaplan–Meier curves for the composite of all-cause death or heart failure hospitalization.

Figure S1-B. Kaplan–Meier curves for all-cause death.

Figure S1-C. Kaplan–Meier curves for heart failure rehospitalization.

- tive, multicenter Kyoto congestive heart failure (KCHF) registry. *Circ J*. 2018; **82**: 2811–2819.
14. Yaku H, Kato T, Morimoto T, Inuzuka Y, Tamaki Y, Ozasa N, Yamamoto E, Yoshikawa Y, Kitai T, Taniguchi R, Iguchi M, Kato M, Takahashi M, Jinnai T, Ikeda T, Nagao K, Kawai T, Komasa A, Nishikawa R, Kawase Y, Morinaga T, Toyofuku M, Seko Y, Furukawa Y, Nakagawa Y, Ando K, Kadota K, Shizuta S, Ono K, Sato Y, Kuwahara K, Kimura T, KCHF Study Investigators. Association of mineralocorticoid receptor antagonist use with all-cause mortality and hospital readmission in older adults with acute decompensated heart failure. *JAMA Netw Open*. 2019; **2**: e195892–e195814.
 15. Ministry of Education, Culture, Sports, Science and Technology; Ministry of Health, Labour and Welfare. Japan's ethical guidelines for epidemiologic research. http://www.lifescience.mext.go.jp/files/pdf/n796_01.pdf (Accessed December 20, 2021)
 16. Yaku H, Kato T, Morimoto T, Inuzuka Y, Tamaki Y, Ozasa N, Yamamoto E, Yoshikawa Y, Kitai T, Kato M, Ikeda T, Furukawa Y, Nakagawa Y, Sato Y, Kuwahara K, Kimura T. Risk factors and clinical outcomes of functional decline during hospitalisation in very old patients with acute decompensated heart failure: An observational study. *BMJ Open*. 2020; **10**: e032674.
 17. Kinugasa Y, Saitoh M, Ikegame T, Ikarashi A, Kadota K, Kamiya K, Kohsaka S, Mizuno A, Miyajima I, Nakane E, Nei A, Shibata T, Yokoyama H, Yumikura S, Yumino D, Watanabe N, Isobe M, Research Team for the Provision of Heart Failure Care Centered on General Practitioners in the Community. Differences in priorities for heart failure management between cardiologists and general practitioners in Japan. *Circ J*. 2021; **85**: 1565–1574.
 18. Ambrosy AP, Fonarow GC, Butler J, Chioncel O, Greene SJ, Vaduganathan M, Nodari S, Lam CSP, Sato N, Shah AN, Gheorghiade M. The global health and economic burden of hospitalizations for heart failure: Lessons learned from hospitalized heart failure registries. *J Am Coll Cardiol*. 2014; **63**: 1123–1133.
 19. Shiraishi Y, Kohsaka S, Sato N, Takano T, Kitai T, Yoshikawa T, Matsue Y. 9-year trend in the management of acute heart failure in Japan: A report from the national consortium of acute heart failure registries. *J Am Heart Assoc*. 2018; **7**: e008687.
 20. Dharmarajan K, Wang Y, Lin Z, Normand SLT, Ross JS, Horwitz LI, Desai NR, Suter LG, Drye EE, Bernheim SM, Krumholz HM. Association of changing hospital readmission rates with mortality rates after hospital discharge. *JAMA*. 2017; **318**: 270–278.
 21. Li Y, Fu MR, Luo B, Li M, Zheng H, Fang J. The effectiveness of transitional care interventions on health care utilization in patients discharged from the hospital with heart failure: A systematic review and meta-analysis. *J Am Med Dir Assoc*. 2021; **22**: 621–629.
 22. Ezekowitz JA, Walraven CV, McAlister FA, Armstrong PW, Kaul P. Impact of specialist follow-up in outpatients with congestive heart failure. *CMAJ*. 2005; **172**: 189–194.
 23. Indridason OS, Coffman CJ, Oddone EZ. Is specialty care associated with improved survival of patients with congestive heart failure? *Am Heart J*. 2003; **145**: 300–309.
 24. Murad K, Goff DC Jr, Morgan TM, Burke GL, Bartz TM, Kizer JR, Chaudhry SI, Gottdiener JS, Kitzman DW. Burden of comorbidities and functional and cognitive impairments in elderly patients at the initial diagnosis of heart failure and their impact on total mortality: The cardiovascular health study. *JACC Heart Fail*. 2015; **3**: 542–550.
 25. World Health Organization. The top 10 causes of death. 2020. <https://www.who.int/news-room/fact-sheets/detail/the-top-10-causes-of-death> (Accessed August 15, 2022)
 26. Ministry of Health, Labour and Welfare. Annual health, labour and welfare report 2021; overview of the system and the basic statistics. <https://www.mhlw.go.jp/english/wp/wp-hw14/dl/01e.pdf>. (Accessed August 15, 2022)
 27. Bando M, Miyatake N, Kataoka H, Kinoshita H, Tanaka N, Suzuki H, Katayama A. Changes and variations in death due to senility in Japan. *Health-care (Basel)*. 2020; **8**: 443.
 28. Yaffe RD, Stitt A, Lee JJ, Mohamed S, Lee DS. Assessing risk and preventing 30-day readmissions in decompensated heart failure: Opportunity to intervene? *Curr Heart Fail Rep*. 2015; **12**: 309–317.
 29. Feltner C, Jones CD, Cene CW, Zheng ZJ, Sueta CA, Coker-Schwimmer EJJ, Arvanitis M, Lohr KN, Middleton JC, Jonas DE. Transitional care interventions to prevent readmissions for persons with heart failure. *Ann Intern Med*. 2014; **160**: 774–784.
 30. Raat W, Smeets M, Janssens S, Vaes B. Impact of primary care involvement and setting on multidisciplinary heart failure management: A systematic review and meta-analysis. *ESC Heart Failure*. 2021; **8**: 802–818.
 31. Fonarow GC, Abraham WT, Albert NM, Stough WG, Gheorghiade M, Greenberg BH, O'Connor CM, Pieper K, Sun JL, Yancy CW, Young JB, OPTIMIZE-HF Investigators and Hospitals. Influence of a performance-improvement initiative on quality of care for patients hospitalized with heart failure; results of the organized program to initiate lifesaving treatment in hospitalized patients with heart failure (OPTIMIZE-HF). *Arch Intern Med*. 2007; **167**: 1493–1502.
 32. Fonarow GC, Abraham WT, Albert NM, Stough WG, Gheorghiade M, Greenberg BH, O'Connor CM, Pieper K, Sun JL, Yancy C, Young JB, OPTIMIZE-HF Investigators and Hospitals. Association between performance measures and clinical outcomes for patients hospitalized with heart failure. *JAMA*. 2007; **297**: 61–70.
 33. DeVore AD, Granger BB, Fonarow GC, Al-Khalidi HR, Albert NM, Lewis EF, Butler J, Piña IL, Allen LA, Yancy CW, Cooper LB, Felker GM, Kaltenbach LA, McRae AT, Lanfear DE, Harrison RW, Disch M, Ariely D, Miller JM, Granger CB, Hernandez AF. Effect of a hospital and postdischarge quality improvement intervention on clinical outcomes and quality of care for patients with heart failure with reduced ejection fraction: The CONNECT-HF randomized clinical trial. *JAMA*. 2021; **326**: 314–323.
 34. Yoshida S, Matsumoto M, Kashima S, Koike S, Tazuma S, Maeda T. Geographical distribution of family physicians in Japan: A nationwide cross-sectional study. *BMC Fam Pract*. 2019; **20**: 147.