



# Correction: Long-Term Protective Effect of Human Dystrophin Expressing Chimeric (DEC) Cell Therapy on Amelioration of Function of Cardiac, Respiratory and Skeletal Muscles in Duchenne Muscular Dystrophy

Maria Siemionow<sup>1,2</sup> · Paulina Langa<sup>1</sup> · Sonia Brodowska<sup>1</sup> · Katarzyna Kozłowska<sup>1,2</sup> · Kristina Zalants<sup>1</sup> · Katarzyna Budzynska<sup>1,2</sup> · Ahlke Heydemann<sup>3</sup>

Published online: 28 November 2022  
© The Author(s) 2022

**Correction: Stem Cell Reviews and Reports**

<https://doi.org/10.1007/s12015-022-10384-2>

The original online version of this article was revised: In this article, the wrong figure appeared as Fig. 5. The figure should have appeared as shown below

---

The original article can be found online at <https://doi.org/10.1007/s12015-022-10384-2>.

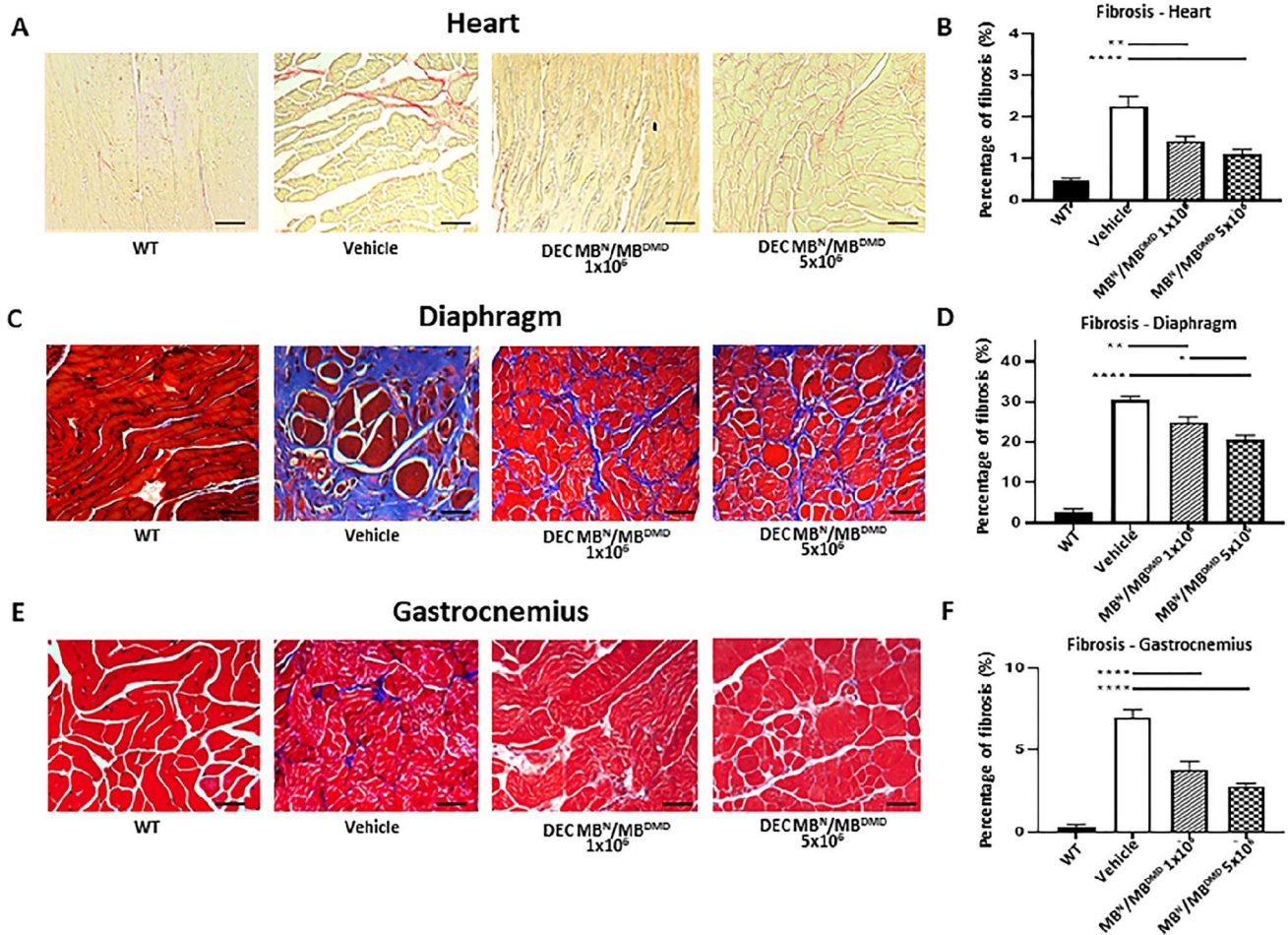
---

✉ Maria Siemionow  
siemiom@uic.edu; siemiom@hotmail.com

<sup>1</sup> Department of Orthopaedics, University of Illinois at Chicago, Chicago, IL, USA

<sup>2</sup> Department of Surgery, Poznan University of Medical Science, Poznan, Poland

<sup>3</sup> Department of Physiology and Biophysics, University of Illinois at Chicago, Chicago, IL, USA



The original article has been corrected.

**Open Access** This article is licensed under a Creative Commons Attribution 4.0 International License, which permits use, sharing, adaptation, distribution and reproduction in any medium or format, as long as you give appropriate credit to the original author(s) and the source, provide a link to the Creative Commons licence, and indicate if changes were made. The images or other third party material in this article are included in the article's Creative Commons licence, unless indicated otherwise in a credit line to the material. If material is not included in the article's Creative Commons licence and your intended use is not permitted by statutory regulation or exceeds the permitted use, you will need to obtain permission directly from the copyright holder. To view a copy of this licence, visit <http://creativecommons.org/licenses/by/4.0/>.

**Publisher's Note** Springer Nature remains neutral with regard to jurisdictional claims in published maps and institutional affiliations.