



Since January 2020 Elsevier has created a COVID-19 resource centre with free information in English and Mandarin on the novel coronavirus COVID-19. The COVID-19 resource centre is hosted on Elsevier Connect, the company's public news and information website.

Elsevier hereby grants permission to make all its COVID-19-related research that is available on the COVID-19 resource centre - including this research content - immediately available in PubMed Central and other publicly funded repositories, such as the WHO COVID database with rights for unrestricted research re-use and analyses in any form or by any means with acknowledgement of the original source. These permissions are granted for free by Elsevier for as long as the COVID-19 resource centre remains active.

# ISTH interim guidance on recognition and management of coagulopathy in COVID-19

Jecko Thachil<sup>1</sup> | Ning Tang<sup>2</sup> | Satoshi Gando<sup>3</sup>  | Anna Falanga<sup>4,5</sup> | Marco Cattaneo<sup>6</sup> | Marcel Levi<sup>7</sup> | Cary Clark<sup>8</sup> | Toshiaki Iba<sup>9</sup>

<sup>1</sup>Department of Haematology, Manchester University Hospitals, Manchester, UK

<sup>2</sup>Tongji Hospital, Huazhong University of Science and Technology, Wuhan, China

<sup>3</sup>Department of Acute and Critical Care Medicine, Sapporo Higashi Tokushukai Hospital, Sapporo, Japan

<sup>4</sup>Department of Transfusion Medicine and Hematology, Hospital Papa Giovanni XXIII, Bergamo, Italy

<sup>5</sup>University of Milan Bicocca, Monza, Italy

<sup>6</sup>Dipartimento di Scienze della Salute, Università degli Studi di Milano, ASST Santi Paolo e Carlo, Milan, Italy

<sup>7</sup>Department of Medicine and Cardio-metabolic Programme-NIHR UCLH/UCL BRC, University College London Hospitals NHS Foundation Trust, London, UK

<sup>8</sup>Director of Programs and Education, International Society on Thrombosis and Haemostasis, Carrboro, North Carolina

<sup>9</sup>Department of Emergency and Disaster Medicine, Juntendo University Graduate School of Medicine, Tokyo, Japan

**Correspondence:** Jecko Thachil, Department of Haematology, Manchester Royal Infirmary, Oxford Road, Manchester M13 9WL, UK.  
Email: jecko.thachil@mft.nhs.uk

## 1 | INTRODUCTION

The novel corona virus infection (now classified as COVID-19), first identified in December 2019 in Wuhan, China, has contributed to significant mortality in several countries with the number of infected cases increasing exponentially worldwide.<sup>1</sup> The majority of the most severely ill patients initially present with single organ failure (ie, respiratory insufficiency) but some of them progress to more systemic disease and multiple organ dysfunction. One of the most significant poor prognostic features in those patients is the development of coagulopathy.<sup>2</sup> In patients who develop sepsis from various infectious agents, development of coagulopathy is one of the key and persistent features which is associated with poor outcomes.<sup>3</sup> In this context, the role of International Society of Thrombosis and Haemostasis (ISTH) will be crucial in guiding health-care professionals in how to manage the coagulopathy of COVID-19. A simple and easily followable algorithm for the management of COVID-19 coagulopathy would currently be useful in both the well-resourced and less-resourced settings as a guide in managing this complication. This pragmatic statement should clearly be considered as an interim guidance because the clinical experience of managing this

pandemic is increasing. The authors are certain that this statement will be modified with developing knowledge and therapeutics in managing COVID-19. The aim of this guidance document is to provide a risk stratification at admission for a COVID-19 patient and management of coagulopathy which may develop in some of these patients, based on easily available laboratory parameters.

## 2 | COAGULATION MARKERS AT ADMISSION

One of the key issues recognized with the management of COVID-19 infection has been the very high volume of patients presenting to health centers or hospitals. It clearly overwhelms the human and mechanistic capacities available, in particular the need for critical care support. As such, risk stratification measures would clearly be helpful. Currently, this is based on the clinical characteristics of severe pneumonia and a consistent finding of lymphopenia in most patients.<sup>4</sup>

In addition, one of the most common laboratory findings noted in COVID-19 patients requiring hospitalization has been the increase in D-dimers.<sup>3</sup> It is already well established that older individuals and those who have co-morbidities (both groups tend to have higher D-dimer) are more likely to die from COVID-19 infection. In the largest analysis

Manuscript handled by: David Lillicrap

Final decision: David Lillicrap, 21 March 2020

© 2020 International Society on Thrombosis and Haemostasis

of clinical cases published to date, which included data regarding 1099 patients with laboratory-confirmed COVID-19 from more than 550 hospitals in China, a D-dimer  $\geq 0.5$  mg/L was noted in 260/560 (46.4%) patients tested with only 43% having raised D-dimer if the disease was non-severe, and about 60% had severe illness.<sup>2</sup> In a study specifically looking at abnormal coagulation parameters, Tang and colleagues have identified markedly elevated D-dimers as one of the predictors of mortality.<sup>3</sup> They noted a presentation D-dimer of 2.12  $\mu\text{g/mL}$  (range 0.77-5.27  $\mu\text{g/mL}$ ) in the non-survivors while it was 0.61  $\mu\text{g/mL}$  (range 0.35-1.29  $\mu\text{g/mL}$ ) in the survivors with the lab normal ranges of  $<0.50$   $\mu\text{g/mL}$ .<sup>3</sup> Similarly, Huang and colleagues showed D-dimer level on admission were higher in patients needing critical care support (median D-dimer level 2.4 mg/L [0.6-14.4]) than those patients who did not require it (median D-dimer level 0.5 mg/L [0.3-0.8],  $P = .0042$ ).<sup>1</sup> For these reasons, the patients who have markedly raised D-dimers (which may be arbitrarily defined as three- to four-fold increase), admission to hospital should be considered even in the absence of other severe symptoms because this clearly signifies increased thrombin generation.

The other diagnostic tests commonly performed in any sick patient are the prothrombin time (PT), and the platelet count. In the Tang study, PT was also prolonged in the non-survivors at admission but *only rather modestly* (15.5 seconds [range 14.4-16.3 seconds] in non-survivors versus 13.6 seconds [13.0-14.3 seconds] in survivors; normal range [11.5-14.5 seconds]).<sup>3</sup> The PT was also mildly prolonged at admission in those who needed critical care support versus the non-ICU cohort (12.2 seconds [range 11.2-13.4] versus 10.7 seconds [range 9.8-12.1], respectively).<sup>1</sup> Of note, it is likely that such subtle changes will not be picked up if the prothrombin time is reported as international normalized ratio (INR), which occurs in many centers (INR is not the same as PT ratio).

Thrombocytopenia is often considered an indicator of sepsis mortality.<sup>5</sup> Interestingly, this is not the case at admission in many of the COVID-19 patients. In the study of 41 patients published in the *Lancet*, a platelet count less than  $100 \times 10^9/\text{L}$  was only seen in 2/40 (5%) patients with one each in ICU and non-ICU category while  $<150 \times 10^9/\text{L}$  was seen in 38/40 (95%) with similar numbers needing or not needing critical care support.<sup>1</sup> On admission, thrombocytopenia determined as  $150 \times 10^9/\text{L}$  was also noted in 36.2% in the largest series but further subclassification was not given although while 31.6% of the patients had non-severe illness, 57.7% had severe illness.<sup>2</sup> A meta-analysis of nine studies including COVID-19 patients with nearly 400 with severe disease identified that the platelet count was significantly lower in patients with more severe COVID-19 (weighted mean difference  $-31 \times 10^9/\text{L}$ ; 95% confidence interval [CI], from  $-35$  to  $-29 \times 10^9/\text{L}$ ).<sup>6</sup> Subgroup analysis comparing patients by survival noted lower platelet count correlated with mortality. Thrombocytopenia was also associated with over five-fold increased risk of severe COVID-19 illness (odds ratio [OR], 5.1; 95% CI, 1.8-14.6). This suggests thrombocytopenia at the time of admission may be but not consistent prognosticator.

Based on the currently available literature, we would recommend measuring D-dimers, prothrombin time, and platelet count (in decreasing order of importance) in all patients who present with COVID-19 infection. This may help in stratifying patients who may need admission

and close monitoring or not (see Figure 1). Any underlying condition (eg, liver disease) or medication (eg, anticoagulants) which may alter the parameters should be accounted for while using the algorithm.

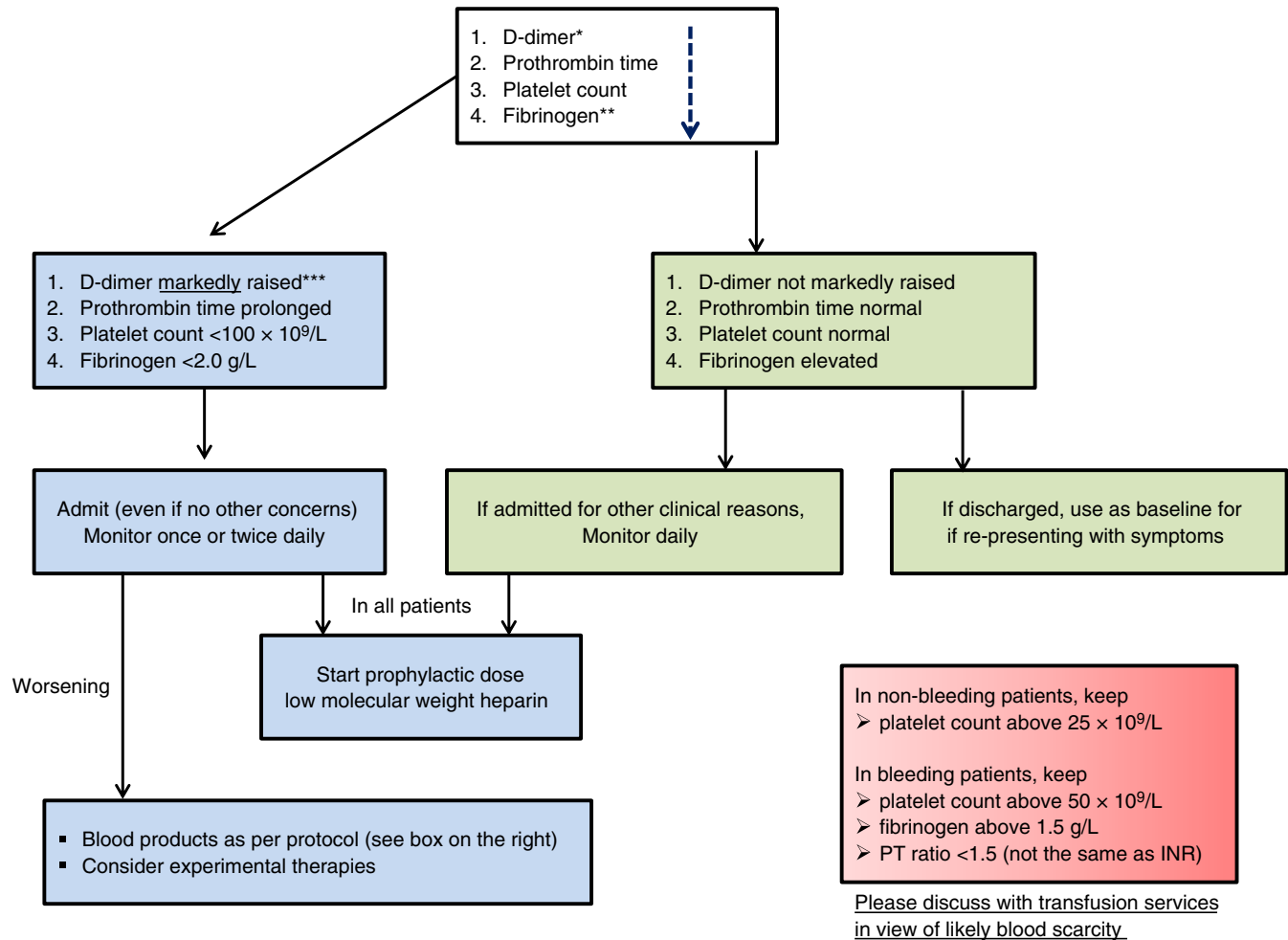
### 3 | MONITORING COAGULATION MARKERS

It is common practice in most critical care units to monitor hemostatic markers to identify worsening coagulopathy. In addition to the platelet count, PT, and D-dimers, it may be useful to measure fibrinogen in this scenario, as recommended by the ISTH guidance on disseminated intravascular coagulation (DIC).<sup>7</sup> With respect to COVID-19 infection, this is an area which has not yet been well studied except by Tang et al.<sup>3</sup> They noted the development of DIC on day 4 in the 71.4% of patients who did not survive the infection compared to DIC in just one patient (0.6%) who survived. The researchers also noted a statistically significant increase in D-dimer levels, and PT, and decrease in fibrinogen levels in non-survivors at days 10 and 14. This establishes the huge importance of regular laboratory monitoring in these patients. They also observed a decrease in antithrombin levels in the non-survivors although this test cannot be undertaken easily in many laboratories.

Based on this study and the experience from published literature on septic coagulopathy, monitoring PT, D-dimer, platelet count, and fibrinogen can be helpful in determining prognosis in COVID-19 patients requiring hospital admission.<sup>8-10</sup> If there is worsening of these parameters, more aggressive critical care support is warranted and consideration should be given for more "experimental" therapies and blood product support as appropriate. If these markers are stable or improving, it gives the added confidence for stepdown of treatment if corroborating with the clinical condition.

### 4 | MANAGEMENT OF COVID-19 COAGULOPATHY

This section is based on the only currently available evidence that markedly increased D-dimer is associated with high mortality in COVID-19 patients. It is also based on the evidence that multi-organ failure is more likely in patients with sepsis if they develop coagulopathy and inhibiting thrombin generation may have benefit in reducing mortality.<sup>11,12</sup> The only widely available treatment in this respect is prophylactic dose low molecular weight heparin (LMWH), which should be considered in *all* patients (including non-critically ill) who require hospital admission for COVID-19 infection, in the absence of any contraindications (active bleeding and platelet count less than  $25 \times 10^9/\text{L}$ ; monitoring advised in severe renal impairment; abnormal PT or activated partial thromboplastin time [APTT] is not a contraindication). The benefit of this approach has recently been submitted as an abstract by Dr Ning Tang. The study included 449 patients with severe COVID-19, of which 99 received heparin (mainly with LMWH) at prophylactic doses. Although no difference was observed in the



**FIGURE 1** Algorithm for the management of coagulopathy in COVID-19 based on simple laboratory markers. \* The list of markers is given in decreasing order of importance. \*\* Performing fibrinogen assays may not be feasible in many laboratories but monitoring the levels can be helpful after patient admission. \*\*\* Although a specific cut-off cannot be defined, a three- to four-fold increase in D-dimer values may be considered significant. Any one of the values in this table may be considered significant

28-day mortality in those who received heparin compared to those who did not, if a SIC (sepsis-induced coagulopathy) score  $\geq 4$  were to be applied to the patients, anticoagulant therapy with LMWH appears to be associated with better prognosis in relation to mortality (40.0% versus 64.2%,  $P = .029$ ).<sup>13</sup> A similar benefit was noted in those with D-dimer  $>$ six-fold of upper limit of normal (32.8% versus 52.4%,  $P = .017$ ). LMWH will also protect critically ill patients against venous thromboembolism. In addition, LMWH has been shown to have anti-inflammatory properties which may be an added benefit in COVID infection where pro-inflammatory cytokines are markedly raised.<sup>1,2,14</sup>

Bleeding is rare in the setting of COVID-19. If bleeding does develop, similar principles to septic coagulopathy as per the harmonized ISTH guidelines with respect to blood transfusions may be followed<sup>7</sup> (see Figure 1). There are several other therapies for COVID-19 which can only be considered experimental at the moment including anti-thrombin supplementation, recombinant thrombomodulin, and hydroxychloroquine based on mitigating the excess thrombin generation hypothesis and immunosuppressive agents including inhalational

therapies which may put a check on the “immunothrombosis” model (bidirectional relationship between inflammation and thrombosis).

#### CONFLICTS OF INTEREST

None declared.

#### AUTHOR CONTRIBUTIONS

JT conceived and wrote the initial draft of the paper. NT, SG, MC, AF, ML, CC, and TI made comments. All authors approved the final submission.

#### ORCID

Satoshi Gando  <https://orcid.org/0000-0002-3525-0750>

#### REFERENCES

- Huang C, Wang Y, Li X, et al. Clinical features of patients infected with 2019 novel coronavirus in Wuhan, China. *Lancet*. 2020;395:497-506.
- Guan WJ, Ni ZY, Hu Y, et al. Clinical Characteristics of Coronavirus Disease 2019 in China. *N Engl J Med*. 2020. <https://doi.org/10.1056/NEJMoa2002032>

3. Tang N, Li D, Wang X, Sun Z. Abnormal coagulation parameters are associated with poor prognosis in patients with novel coronavirus pneumonia. *J Thromb Haemost.* 2020;18(4):844-847
4. Zhang J, Zhou L, Yang Y, Peng W. Therapeutic and triage strategies for 2019 novel coronavirus disease in fever clinics. *Lancet.* 2019. [https://doi.org/10.1016/S2213-2600\(20\)30071-0](https://doi.org/10.1016/S2213-2600(20)30071-0)
5. Williamson DR, Albert M, Heels-Ansdell D, et al. Thrombocytopenia in critically ill patients receiving thromboprophylaxis. *Chest.* 2013;144(4):1207-1215.
6. Lippi G, Plebani M, Henry BM. Thrombocytopenia is associated with severe coronavirus disease 2019 (COVID-19) infections: A meta-analysis. *Clin Chim Acta.* 2020;8981(20):145-148.
7. Wada H, Thachil J, Di Nisio M, et al. Guidance for diagnosis and treatment of DIC from harmonization of the recommendations from three guidelines. The Scientific Standardization Committee on DIC of the International Society on Thrombosis Haemostasis. *J Thromb Haemost.* 2013. <https://doi.org/10.1111/jth.12155>
8. Taylor FB, Toh CH, Hoots WK, Wada H, Levi M. Towards definition, clinical and laboratory criteria, and a scoring system for disseminated intravascular coagulation. *Thromb Haemost.* 2001;86:1327-1330.
9. Levi M, Toh CH, Thachil J, Watson HG. Guidelines for the diagnosis and management of disseminated intravascular coagulation. British Committee for Standards in Haematology. *Br J Haematol.* 2009;145:24-33.
10. di Nisio M, Baudo F, Cosmi B, et al. Diagnosis and treatment of disseminated intravascular coagulation: Guidelines of the Italian Society for Haemostasis and Thrombosis (SISET). *Thromb Res.* 2012;129(5):e177-e184.
11. Shankar-Hari M, Phillips GS, Levy ML, et al. Sepsis definitions task force. Developing a new definition and assessing new clinical criteria for septic shock: for the third international consensus definitions for sepsis and septic shock (Sepsis-3). *JAMA.* 2016;315(8):775-787.
12. Iba T, Levy JH, Warkentin TE, et al. Diagnosis and management of sepsis-induced coagulopathy and disseminated intravascular coagulation. *J Thromb Haemost.* 2019;17(11):1989-1994.
13. Iba T, Nisio MD, Levy JH, Kitamura N, Thachil J. New criteria for sepsis-induced coagulopathy (SIC) following the revised sepsis definition: a retrospective analysis of a nationwide survey. *BMJ Open.* 2017;7(9):e017046.
14. Poterucha TJ, Libby P, Goldhaber SZ. More than an anticoagulant: do heparins have direct anti-inflammatory effects? *Thromb Haemost.* 2017;117(3):437-444.