

RESEARCH

Open Access



# Caffeine ameliorates the metabolic syndrome in diet-induced obese mice through regulating the gut microbiota and serum metabolism

Li Chen<sup>1,2†</sup>, Xian-jun Wang<sup>1†</sup>, Jie-xin Chen<sup>2</sup>, Jing-cheng Yang<sup>2</sup>, Ling Lin<sup>3</sup>, Xian-Bin Cai<sup>1\*</sup> and Yong-song Chen<sup>2\*</sup>

## Abstract

**Objective** Obesity is associated with gut microbiota disorders, which has been related to developing metabolic syndromes. The research aims to investigate the effects of caffeine treatment on insulin resistance, intestinal microbiota composition and serum metabolomic changes in high-fat diet (HFD)-induced obesity mice.

**Methods** Eight-week-old male C57BL/6 J mice were fed a normal chow diet (NCD) or HFD with or without different concentrations of caffeine. After 12 weeks of treatment, body weight, insulin resistance, serum lipid profiles, gut microbiota and serum metabolomic profiles were assessed.

**Results** Caffeine intervention improved the metabolic syndrome in HFD-fed mice, such as serum lipid disorders and insulin resistance. 16S rRNA Sequencing analysis revealed that caffeine increased the relative abundance of *Dubosiella*, *Bifidobacterium* and *Desulfovibrio* and decreased that of *Bacteroides*, *Lactobacillus* and *Lactococcus* to reverse HFD-fed obesity in mice. Additionally, Caffeine Supplementation also altered serum metabolomics, mainly focusing on lipid metabolism, bile acid metabolism and energy metabolism. Caffeine increased its metabolite 1,7-Dimethylxanthine, which was positively correlated with *Dubosiella*.

**Conclusions** Caffeine exerts a beneficial effect on insulin resistance in HFD-mice, and the underlying mechanism may be partly related to altered gut microbiota and bile acid metabolism.

**Keywords** Caffeine, Gut microbiota, Serum metabolism, Metabolic syndrome

<sup>†</sup>Li Chen and Xian-jun Wang contributed equally to this work

\*Correspondence:

Xian-Bin Cai

[cxbin1@qq.com](mailto:cxbin1@qq.com)

Yong-song Chen

[yongsongchen@126.com](mailto:yongsongchen@126.com)

<sup>1</sup> Department of Gastroenterology, The First Affiliated Hospital of Shantou University Medical College, Shantou 515041, Guangdong, People's Republic of China

<sup>2</sup> Department of Endocrinology, The First Affiliated Hospital of Shantou University Medical College, No. 57 Changping Road, Shantou 515041, Guangdong, China

<sup>3</sup> Department of Rheumatology, The First Affiliated Hospital of Shantou University Medical College, Shantou 515041, Guangdong, China

## Introduction

Obesity is a serious issue worldwide, and its prevalence continues to rise in most countries [1]. Obesity can be simply summarized as the imbalance between energy intake and expenditure resulting in the accumulation of excess energy in the body, leading to metabolic disorders in the organism [2]. Many kinds of research show it is closely related to type 2 diabetes, non-alcoholic fatty liver disease, and heart diseases [3, 4]. Moreover, Insulin resistance (IR) has long been a problem carried by obesity itself. Although taking diet pills is currently the most popular way to lose weight, they still have



some side effects and may improve insulin resistance to a limited extent. For example, Metformin can cause adverse gastrointestinal reactions (5). This is why an urgent search for a functional food that fights obesity while improving insulin resistance is critical.

Coffee and tea are the food products most consumed worldwide [6, 7]. Long-term consumption of tea or coffee has a wide range of health-promoting effects, including anti-obesity [8], prevention of Type II Diabetes [9], as well as inhibition of the development of diabetic complications [10]. Caffeine is the main active ingredient of tea and coffee. A study of green tea containing caffeine suggests that caffeine may be its main anti-obesity ingredient [11]. The beneficial metabolic effects of caffeine on obesity include the downregulation of inflammatory factors expression in the circulation and various tissues, the upregulation of adipocyte lipolysis, the inhibition of lipid synthesis and hepatic steatosis, a reduction in fat mass and the improvement of fatty liver, hepatic/systemic insulin resistance, which have been reported in both humans and animals [12–15]. In addition, in nonobese research models, caffeine was also found to inhibit neonatal cord blood mononuclear cells from releasing TNF- $\alpha$ , improving fructose-induced insulin resistance in mice by enhancing central insulin signaling and Glut4 expression in skeletal muscle to reverse rat ageing-induced insulin resistance [16–18].

Many reports show the gut microbiota has been linked to inflammatory bowel disease [19], obesity [20], autism spectrum disorders [21] and immune system disorders [22] among others. Some components of coffee might have affected the gut microbiota [23–25]. A recent study has shown that EGCG and caffeine, the main component of green tea, can modulate the gut microbiome to fight obesity [26]. Fubrick tea has been confirmed to improve metabolic disorders by regulating intestinal microbiome and caffeine metabolism [27], and the close relationship between gut microbiome and metabolomics suggests that caffeine may affect gut microbiome. What's more, it has been shown that caffeine-induced sleep restriction alters the gut microbiome in mice [28]. However, the relationship between how caffeine affects the gut microbes and its improvement in metabolic syndrome has not been reported. Metabolomics has been widely used because of its potential to help researchers identify the involvement of different biomarkers. Therefore, we focus on investigating whether caffeine, a main component of coffee, ameliorates insulin resistance in diet-induced obesity mice in association with gut microbiota alterations and explores its underlying mechanism through plasma metabolites.

## Method

### Preparation of caffeine solution

Caffeine (Sigma-Aldrich, C0750) was respectively dissolved in sterile water to get a concentration of low-dose caffeine solution (0.5 g/L) and high-dose caffeine solution (1 g/L) for feeding to high-fat mice until mice were sacrificed.

### Animal experiments

Forty male C57BL/6 J mice (Charles River) weighing 20–25 g were bred at Shantou University Medical College (Shantou, China). All animals lived in a specific pathogen-free environment with free access to food and water. After all, mice were acclimatized to the research environment for one week; ten mice were randomly fed with a normal chow diet (NCD group). In contrast, the remaining 30 mice were fed with a 60% high-fat diet (Research-Diet, D12492) and randomly divided into three groups to fed with the sterile water (HFD group), low-dose caffeine solution (caffeine low-dose group) and high-dose caffeine solution (caffeine high-dose group) at the same time. The ten mice in the same group were randomly labelled and housed in two standard cages (five mice per cage). The body weight of mice and the amount of food intake were measured weekly.

### Biochemical analysis of serum samples

At the end of the experiment, all mice were anaesthetized with sodium pentobarbital (50 mg/kg) intraperitoneally. The eyes were removed to collect the blood samples in 5 mL Vacutainer tubes containing the chelating agent ethylene diamine tetraacetic acid (EDTA). The samples were centrifuged at 4 °C for 15 min, and plasma samples were collected and stored at – 80 °C. Serum random blood glucose and lipid profiles such as Total cholesterol (TC), total triglycerides (TG), High-density lipoproteins (HDL) and Low-density lipoproteins (LDL) were measured with an Abbott Architect c16000 instrument (The First Affiliated Hospital of Shantou University Medical College).

### Intraperitoneal glucose tolerance test (IPGTT)

After 12 weeks of caffeine intervention, all mice fasted for 8 h. Using blood glucose test strips, measured the blood glucose level at 0 min. Immediately after that, all animals were intraperitoneally injected with 20% glucose solution (1 g/kg). Subsequently, blood glucose values were respectively measured at 30, 60, 90, and 120 min. Plot the blood glucose-time curve and computer the area under the IPGTT curve (AUC).

### Intraperitoneal insulin tolerance test (IPITT)

The blood glucose values of each animal given adequate diet and water were measured as the blood glucose values at 0 min. Afterwards, blood glucose levels were measured at 30,60,90 and 120 min after giving each mouse an intraperitoneal injection of 0.75U/kg of insulin with fasting without water. The blood glucose-time curve and the AUC of IPITT are similar to that described above.

### 16S rRNA sequencing and data analysis

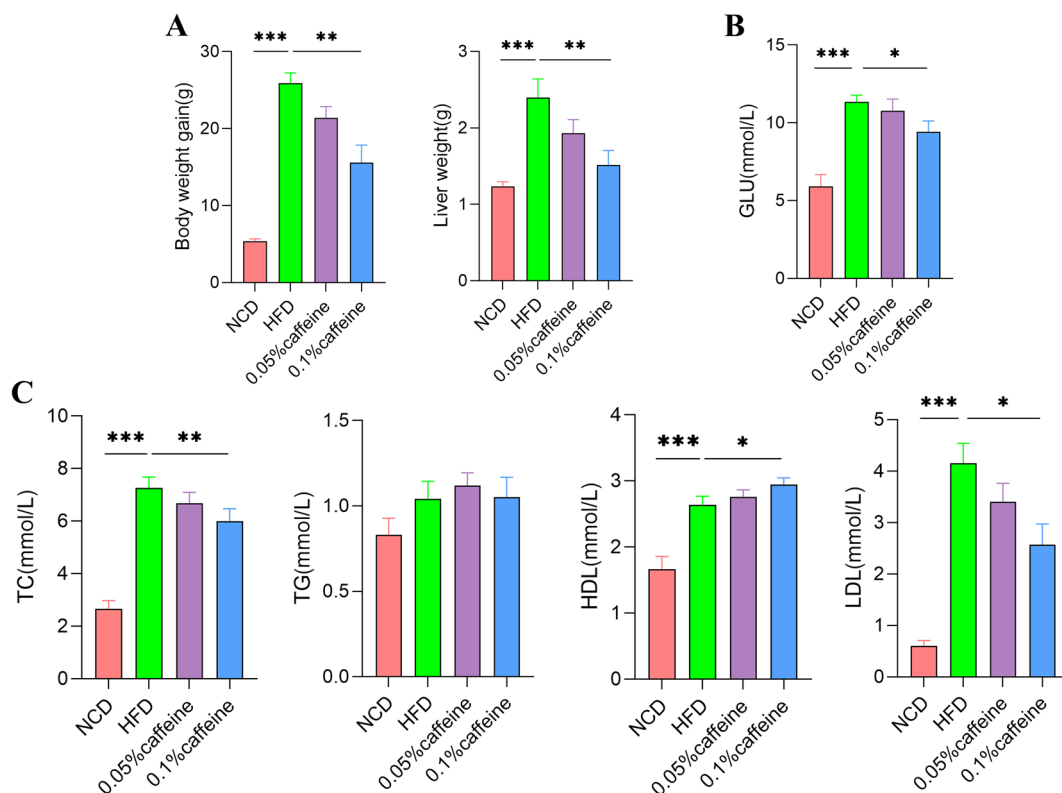
#### Sequencing

Total genomic DNA from 39 samples was obtained by hexadecyl trimethyl ammonium bromide (CTAB)/sodium dodecyl sulfate (SDS) method, and the concentration and purity of DNA were detected by 1% agarose gels. The DNA was diluted to 1 ng/ $\mu$ l with sterile water. 16S rRNA was amplified using barcode-containing specific primers 341F-806R (V3-V4). After quantifying and identifying PCR products using 1X loading buffer (containing SYBR green) and 2% agarose gel, the mixed PCR products were purified using the

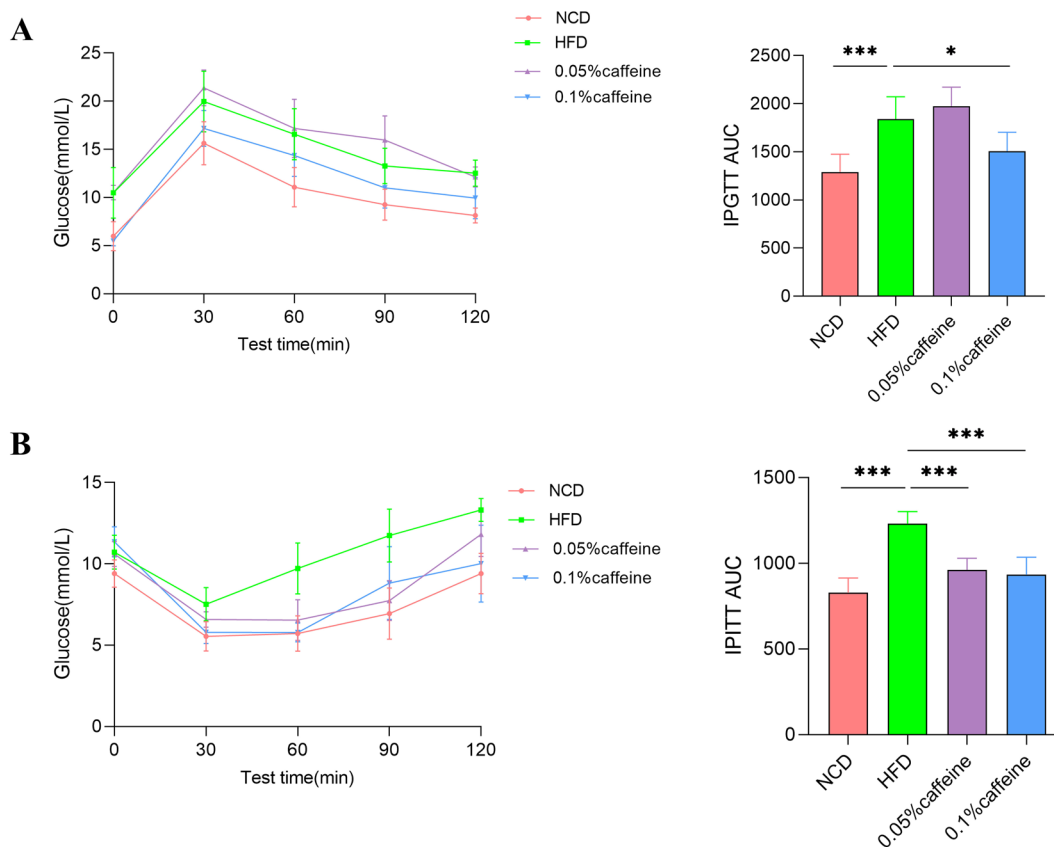
AxyPrepDNA Gel Extraction Kit (AXYGEN). Sequencing libraries were generated using the NEB Next<sup>®</sup> Ultra<sup>™</sup> DNA Library Prep Kit for Illumina (NEB, USA) according to the manufacturer's recommendations with index codes added. Library quality was evaluated on a Qubit<sup>®</sup> 2.0 Fluorometer (Thermo Scientific) and an Agilent Bioanalyzer 2100 system. Finally, the library was sequenced on the Illumina Miseq/HiSeq2500 platform to obtain 250 bp/300 bp paired-end reads.

#### Data analysis

Paired-end reads from raw DNA fragments were merged using FLASH and assigned to each sample based on a unique barcode. Sequence analysis was performed by the UPARSE software package using the UPARSE-OTU and UPARSE-OTUref algorithms. Sequences with  $\geq 97\%$  similarity were assigned to the same OTU. We select a representative sequence for each OTU and use the RDP classifier to annotate the taxonomic information of each representative sequence. Histograms of the relative abundance of species at the phylum and genus levels show the



**Fig. 1** Caffeine alleviated the Hyperlipidemia in the HFD-mice. (A) Caffeine high-dose treatment decreased the body weight and liver weight in obese mice. (B) Caffeine high-dose significantly improved Hyperlipidemia compared with the HFD group. (C) Caffeine high-dose intervention decreased random blood sugar in obese mice. NCD, HFD, caffeine low-dose and caffeine high-dose (n = 9/10 per group) groups. Data are presented as the mean  $\pm$  SEM. \* $p < 0.05$ ; \*\* $p < 0.01$ ; \*\*\* $p < 0.001$  (HFD group versus NCD group, caffeine low-dose group, caffeine high-dose group)



**Fig. 2** The AUC of IPGTT and IPITT were respectively decreased in insulin resistance mice after caffeine treatment. NCD, HFD, caffeine low-dose and caffeine high-dose (n = 5 per group) groups

community structure of each grouping at different taxonomic levels. Alpha Diversity metrics such as ace and chaol were used to Analyze Microbiota evenness and diversity. To confirm differences in the taxonomic abundance of individuals between the two groups, STAMP software was used. LEfSe was used to quantify biomarkers within different groups.

### Serum metabolomic analysis

#### Sample extraction

Plasma samples collected as above were thawed at 4 °C. An appropriate amount of sample and pre-cooled methanol/acetonitrile(1:1,v/v) were mixed and centrifuged for 20 min(14000 g, 4 °C). The supernatant was used for LC-MS/MS Analysis.

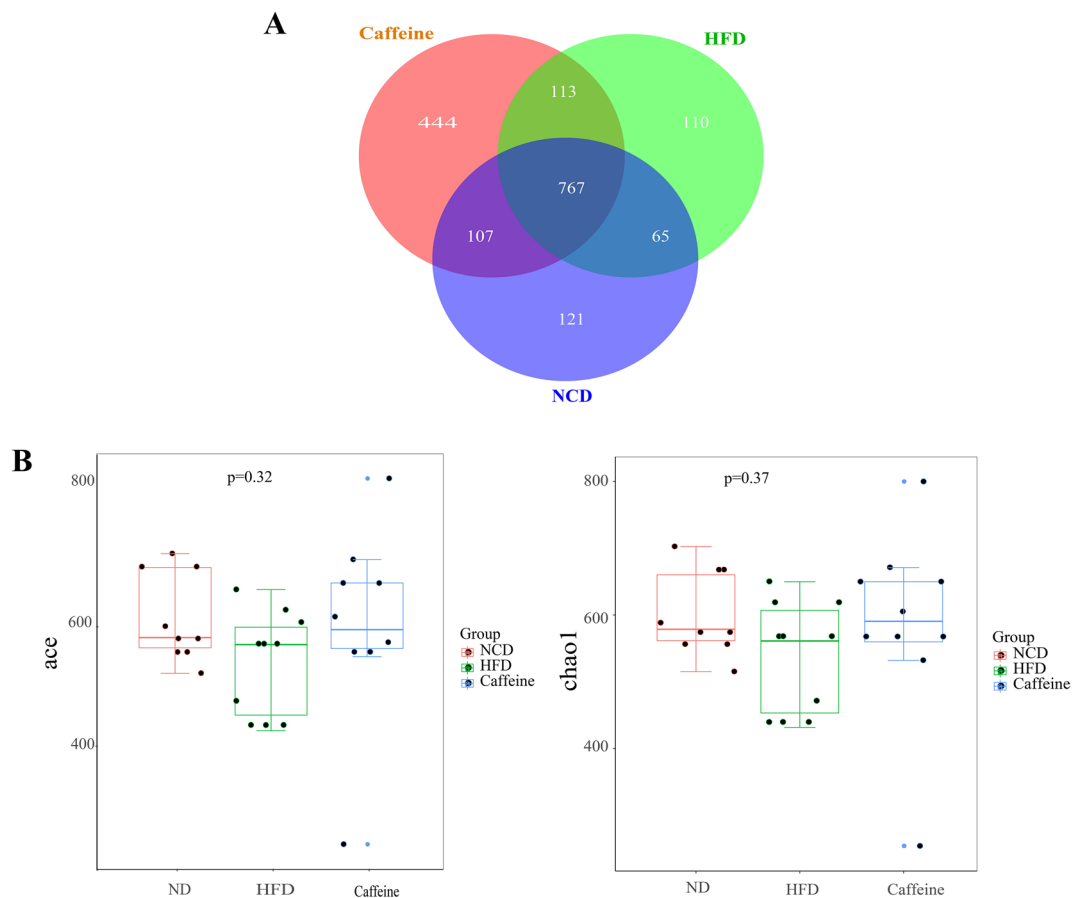
#### LC-MS/MS analysis

The serum samples were detected by a UHPLC (1290 Infinity LC, Agilent Technologies). The column temperature, flow rate and injection volume were 25 °C, 0.5 mL/min and 2 µL. The mobile phase consisted of A (water + 25 mM ammonium acetate + 25 mM

ammonia) and B (acetonitrile). The gradient elution program was as follows: 0–0.5 min 95%B; 0.5–7 min, B linearly change from 95 to 65%; 7–8 min, B from 65% linear change to 40%; 8–9 min, B maintained at 40%; 9–9.1 min, B linear change from 40 to 95%; 9.1–12 min, B maintained at 95%. Samples are analyzed randomly and continuously to reduce errors caused by fluctuations in the instrument detection signals. The separated samples were analyzed using a quadrupole time-of-flight (AB Sciex TripleTOF 6600) with electrospray ionization in positive and negative ion modes, as described in a previous study [29].

#### Data analysis

The raw data was converted to. mzXML format by ProteoWizard, and imported into the XCMS software for peak alignment, retention time correction and peak area extraction. Subsequently, the data extracted by XCMS were subjected to metabolite structure identification, data pre-processing, data quality evaluation and finally, data analysis. The data acquired were sample normalized, log-transformed (base 10) and auto-scaled



**Fig. 3** Caffeine treatment altered the number and Alpha diversity of gut microbiota in HFD-mice. (A) A Venn diagram in the three groups. (B) Ace and chaol indexes were higher in the caffeine high-dose group than in the HFD group

on MetaboAnalyst 5.0 (<https://www.metaboanalyst.ca/MetaboAnalyst/ModuleView.xhtml>). Partial Least Squares—Discriminant Analysis (PLS-DA) and Orthogonal Partial Least Squares Discriminant Analysis (OPLS-DA) are used to perform multivariate statistical analyses. The variable importance in projection (VIP) values showing the contribution of each variable to the classification were measured and counted in the OPLS-DA model. The student's *t*-test *P* values lower than 0.05 indicated statistically significant differences. Volcano plots further revealed changes in metabolites, with  $FC > 1.2$  being upregulation and  $FC < 0.8$  being downregulation. Lastly, we selected important differential metabolites for metabolite pathway studies in the KEGG (Kyoto Encyclopedia of Genes and Genomes, <http://www.kegg.jp/>) database.

#### Omics association analysis

The relationships between different bacterial lineages and metabolites were obtained by correlation analysis using Spearman's correlation method for the critical differential metabolites screened by metabolomics and

Intestinal microbes that differed significantly at the genus level by 16S sequencing. Correlation heatmap and hierarchical clustering analysis were performed on R language (4.1.2) software.

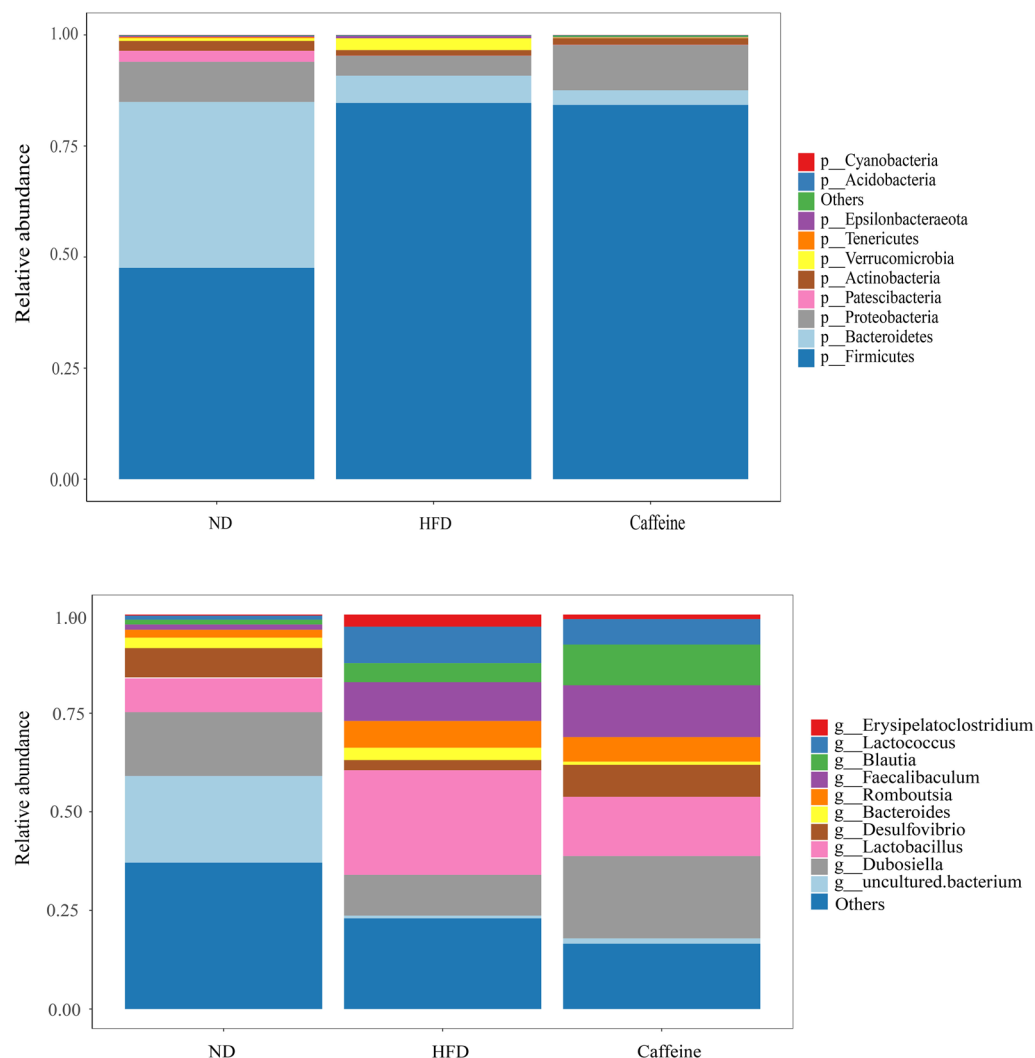
#### Statistical Analysis

All data are expressed as mean  $\pm$  SEM. Statistical analysis between the control and experiment groups was performed using One-way ANOVA on SPSS 25 software. The Bonferroni post hoc test and the Dunnett T3 post hoc were respectively used for conformity to chi-square and non-conformity chi-square. *P*-value  $< 0.05$  was considered statistically significant. Graphs were made using GraphPad Prism 8 software.

#### Result

##### Caffeine mitigated metabolic disorders in mice fed with a high-fat diet

Metabolic syndrome is characterized by obesity, diabetes, impaired glucose regulation, and dyslipidemia. As



**Fig. 4** Caffeine high-dose treatment altered the relative abundances of some gut microbiota at the phylum and genus level

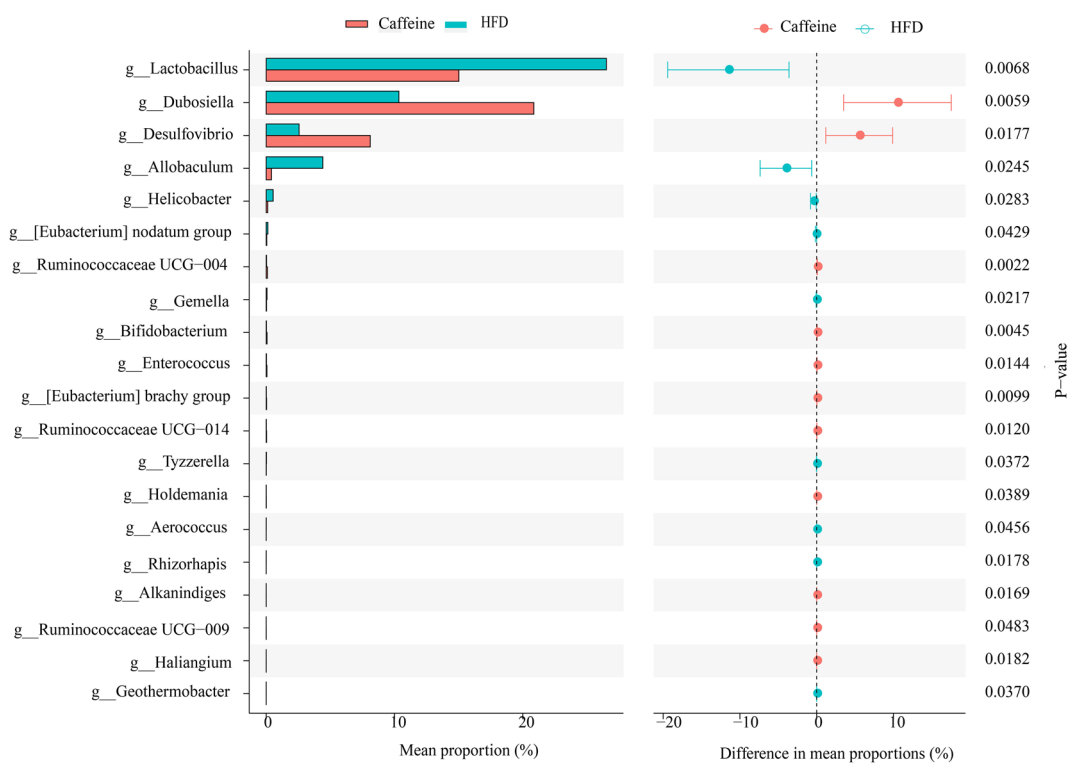
shown in Fig. 1A, B, body weight gain and liver weight were increased in HFD mice in comparison with NCD mice ( $p < 0.001$ ), while caffeine high-dose treatment significantly reduced these indices in comparison with HFD mice ( $p < 0.01$ ). Compared with the NCD mice, serum triglyceride (TG), total cholesterol (TC) and low-density lipoprotein cholesterol (LDL-C) levels were elevated. However, the high-density lipoprotein cholesterol (HDL-C) level was also increased ( $p < 0.001$ ). Consequently, caffeine high-dose significantly downregulated TC and LDL-C levels and upregulated HDL-C levels (Fig. 1C,  $p < 0.01$ ;  $p < 0.05$ ). Similarly, caffeine high-dose reduced plasma random blood glucose in HFD mice (Fig. 1B,  $p < 0.05$ ). IPGTT and IPITT tested insulin resistance. Our results indicated that supplementation with high caffeine dose rather than a low dose decreased the AUC of GTT and ITT curve, increasing HFD in mice (Fig. 2;  $p < 0.001$ ;

$p < 0.05$ ). Overall, caffeine high-dose improved the metabolic disorders associated with high-fat diet-induced obesity.

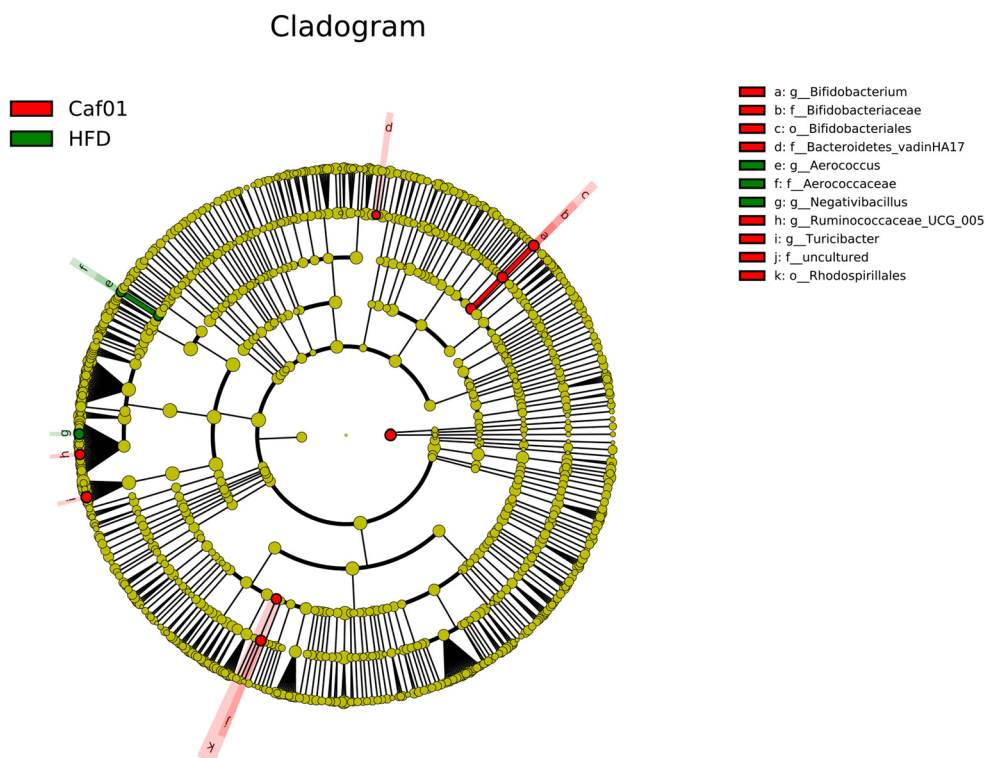
#### Caffeine remodeled the gut microbiota in HFD mice

Growing evidence indicates Gut microbiota dysbiosis has been repeatedly seen in insulin resistance. To investigate whether caffeine affects the gut microbiota, we collected faeces at 12 weeks of NCD, HFD and caffeine high-dose + HFD mice and then profiled the microbiota composition by 16S rRNA gene sequencing. We performed Splicing, filtering, and chimera removal on 100897 raw tags from 29 faecal samples to get 83789 clean sequences clustered into 1821 operational taxonomic units (OTUs) with consistently higher than 97% for further analysis. As observed on a Venn diagram (Fig. 3A), 767 OUT were shared among the three groups, and each

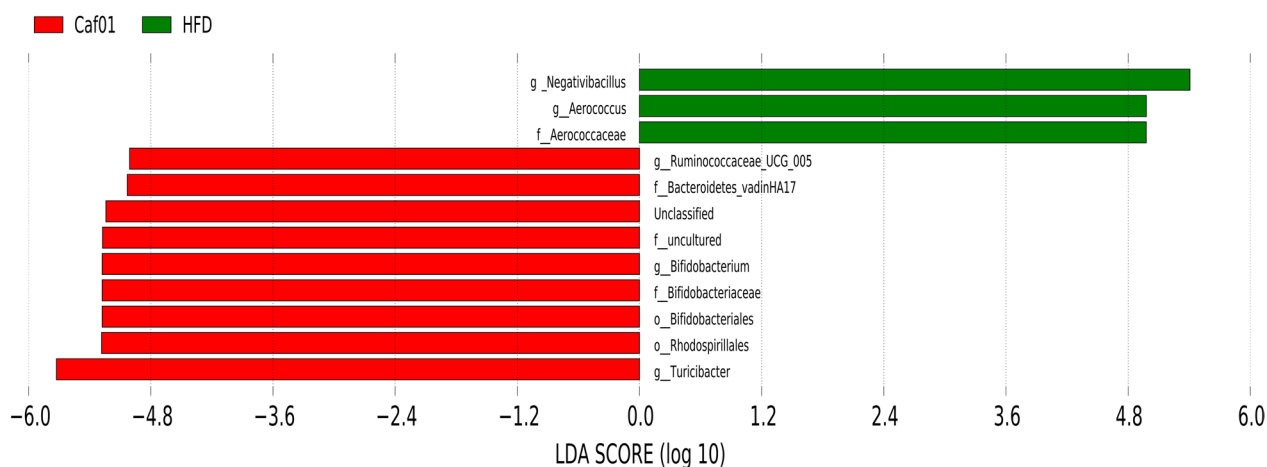




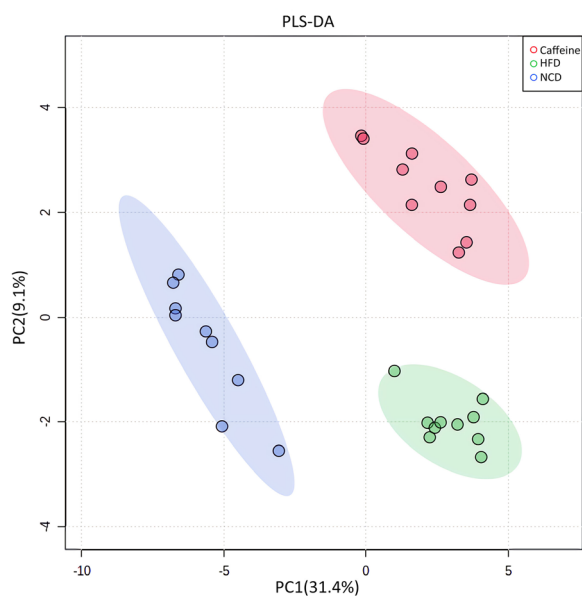
**Fig. 5** The welch t-test of gut microbiota between HFD and caffeine high-does group



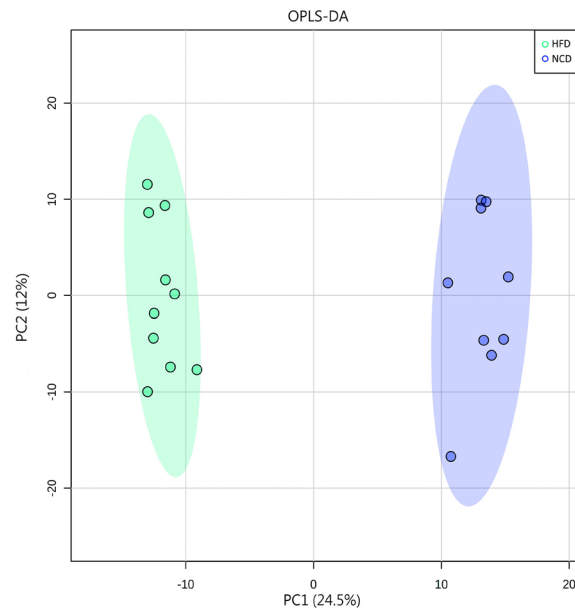
**Fig. 6** LEfSe analysis identified the most differentially abundant taxa of gut microbiota between the HFD group and caffeine high-dose (n = 9/10 per group) groups



**Fig. 7** LDA scores of LEfSe analysis > 4 are shown



**Fig. 8** PLS-DA scores of serum metabolites in high-dose groups of NCD, HFD and caffeine high-dose group

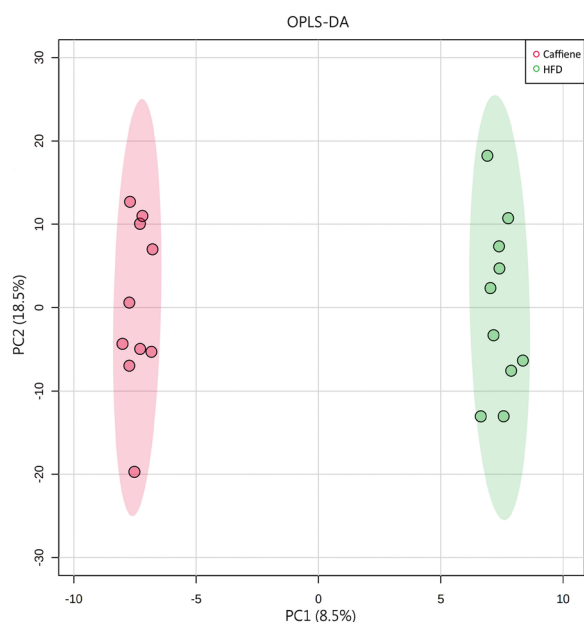


**Fig. 9** Scores plots of OPLS-DA of serum metabolites between NCD and HFD groups

group had unique OTUs. Ace and chao1, representative Alpha analyses indices (Fig. 3B), showed HFD decreased microbiota species richness and diversity, while caffeine seemed to reverse this change (with no statistical significance). As expected, *Firmicutes* was the most abundant phylum of all samples; however, caffeine seems not to affect *Firmicutes*. We observed caffeine decreased further *Bacteroidetes*, which may be associated with a reduction in *Bacteroides* at the genus level (Fig. 4). Among the significant microbial communities at the genus level, the relative abundance of *Dubosiella* and *Desulfovibrio* was decreased by HFD mice compared with the NCD mice,

while caffeine increased these two microbiotas. Moreover, it also raised *Faecalibaculum* and *Blautia*. At the same time, caffeine decreased the relative abundance of *Lactobacillus*, *Romboutsia*, *Lactococcus* and *Erysipelatoclostridium* increased by HFD mice (Fig. 4). We did a Welch t-test with an abundance index for the HFD and caffeine high-dose groups to further explore whether caffeine affected the faecal microbiota. We found 19 OTUs significantly different ( $p < 0.05$ ). As shown in Fig. 5, we found the differences between *Dubosiella*, *Desulfovibrio* and *Lactobacillus* were statistically significant. Furthermore, caffeine elevated *Ruminococcaceae* UCG-004,

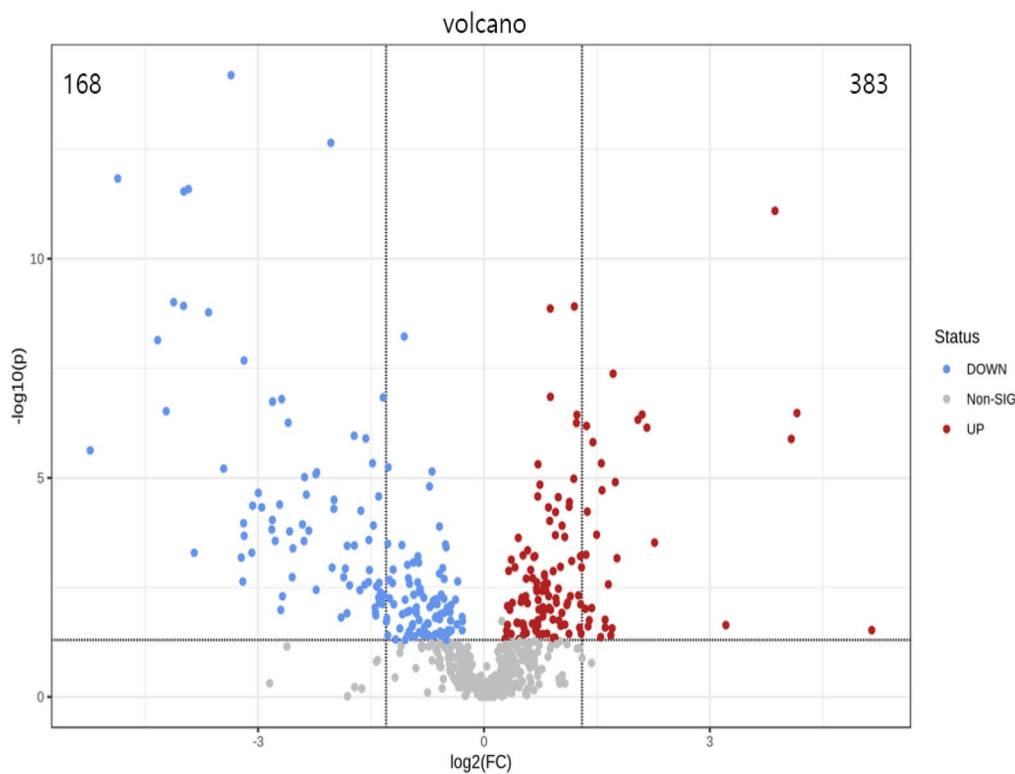




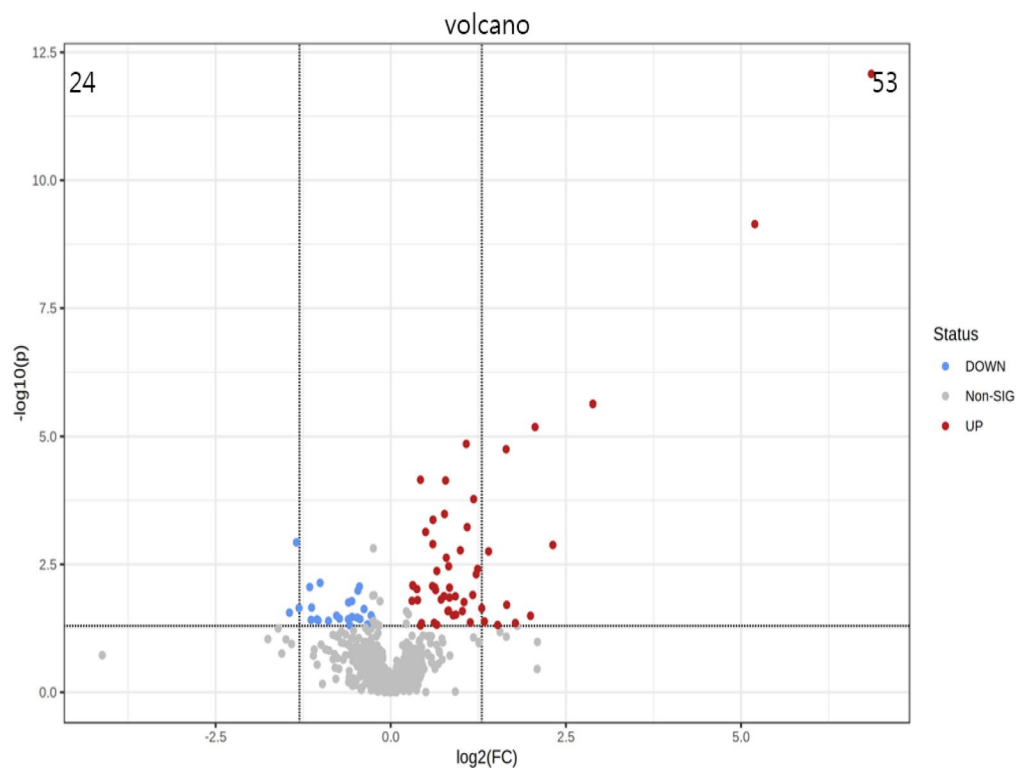
**Fig. 10** Scores plots of OPLS-DA of serum metabolites between Caffeine and HFD groups

*Bifidobacterium*, [*Eubacterium*] *brachy* group, *Ruminococcaceae* UGC-014, *Enterococcus*, *Alkanindiges*, *Haliangium*, *Holdemania* and *Ruminococcaceae* UCG-009 and decreased *Gemella*, *Allobaculum*, *Helicobacter*, *Geothermobacter*, *Tyzzereella*, [*Eubacterium*] *no datum* group and *Aerococcus*. Similarly, we used LDA Effect Size (LEfSe) analysis to identify communities or species that significantly impacted the sample delineation shown in Fig. 6. Species with LDA values greater than 4 were set as statistically different markers between groups (Fig. 7).

**Caffeine changes plasma metabolites in high-fat diet mice**  
 PCA is a statistical method that can predict the species with the most enormous difference between groups, which is an unsupervised model; while PLS-DA is a supervised model, which can maximize the difference between groups according to a predefined classification, which has better separation than PCA. The PLS-DA plot showed that there was a clear separation between NCD and HFD and caffeine high-dose groups (Fig. 8). To identify differential metabolites, the OPLS-DA and its corresponding variable importance of projection (VIP) were applied. Consistent with the PLS-DA results, the OPLS-DA model also showed NCD group



**Fig. 11** The volcano plot of serum metabolites between NCD and HFD groups



**Fig. 12** The volcano plot of serum metabolites between Caffeine and HFD groups

could be well distinguished from the HFD group, and significant distinctions were observed between HFD and caffeine high-dose group (Figs. 9, 10). In addition, compared to the NCD group, the volcano plot showed that 168 metabolites were downregulated and 383 metabolites were upregulated under high-fat diet induction; caffeine high-dose in obese mice resulted in 24 metabolites downregulated and 53 metabolites upregulated in serum (Figs. 11, 12).

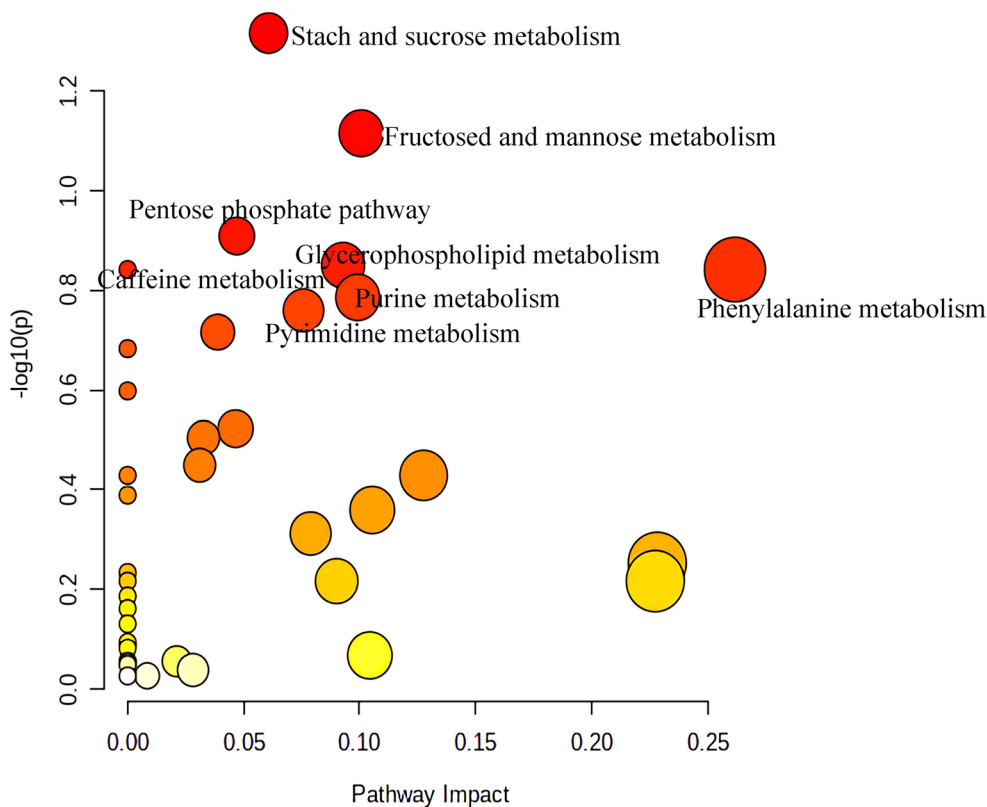
Next, we used differential metabolites ( $FC > 1.2$  or  $FC < 0.8$ ,  $p < 0.05$ ,  $VIP > 1.0$ ) for metabolic pathway screening. Compared with the NCD group, the top 8 KEGG pathways that changed in the HFD group mainly included Starch and sucrose metabolism, Fructose and mannose metabolism, Pentose phosphate pathway, Glycerophospholipid metabolism and caffeine metabolism, which focuses on energy metabolism (Fig. 13); while the pathways changed by caffeine high-dose mainly included Linoleic acid metabolism, Sulfur metabolism, Primary bile acid biosynthesis, Caffeine metabolism, Histidine metabolism, Purine metabolism, Pyruvate metabolism, Glycine, serine and threonine metabolism, Biosynthesis of unsaturated fatty acids and Steroid hormone biosynthesis could be seen (Fig. 14). The Specific trends of variation of differential metabolites contained in metabolic pathways are shown in Table 1.

#### Correlation analysis of gut microbiota, serum untargeted metabolites, physiological data and insulin resistance indicators

Correlation analysis of serum untargeted metabolites and gut microbiota at genus level in the NCD, HFD and caffeine high-dose groups was presented by correlation heatmap. As shown in Fig. 15, caffeine metabolomics such as 1,7-Dimethylxanthine showed positive correlations with *Dubosiella*, *Alkaninndiges* and *Faecalibaculum*. Pyruvaldehyde was positive correlations with *Allobaculum*. In addition, *Desulfovibrio*, *Dubosiella*, and *Alkaninndiges* correlated positively with most of the metabolites. N-methylhistamine and Cholic acid showed negative correlations with some gut microbiota. In addition, *Bifidobacterium*, *Desulfovibrio* and *Ruminococcaceae* showed negative correlations with and *Lactobacillus*, *Lactococcus*, *Faecalibaculum*, and *Allobaculum* showed positive correlations with physiological data and insulin resistance indicators (Figs. 16, 17).

#### Discussion

In our study, we found that caffeine high-dose could reduce body weight and liver weight, and improve hyperlipidemia and insulin resistance in the HFD mice, demonstrating caffeine has a therapeutic effect on metabolic

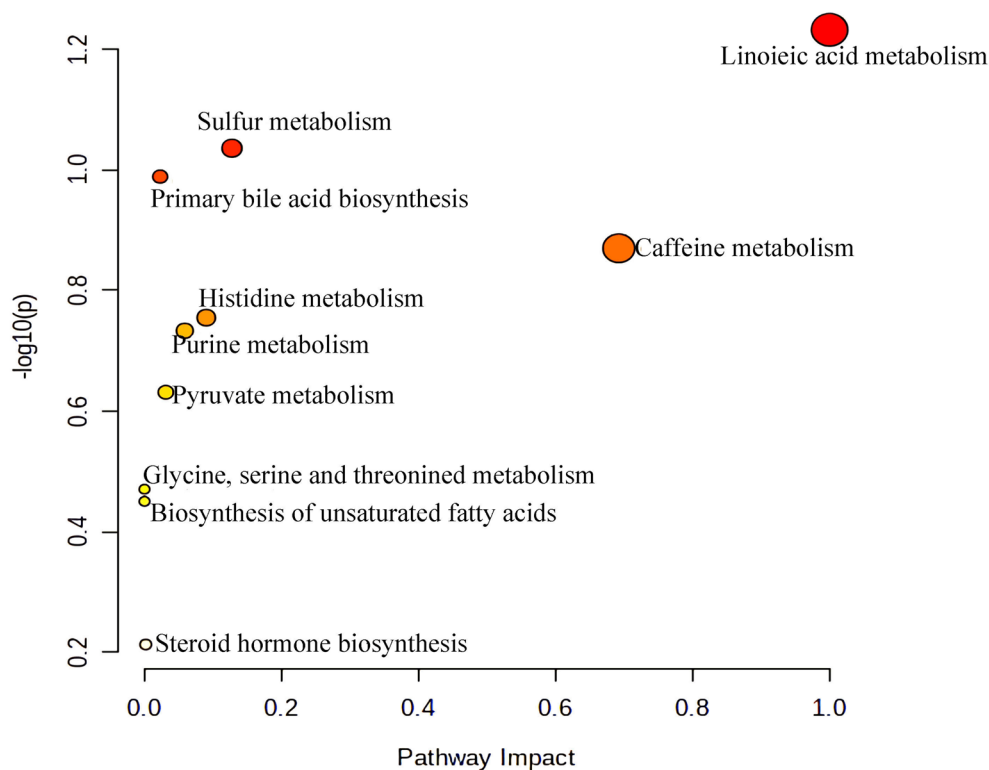


**Fig. 13** Summary of pathway analysis of serum samples between NCD and HFD group

syndromes, which is consistent with previous studies [15–17]. Moreover, we elucidate the mechanism of this anti-metabolic syndrome, which may involve gut microbiota, bile acid metabolism, lipid metabolism, and energy metabolism.

The nature of the intestinal microbiome has been shown to be closely related to IR in several human and animal model studies [30, 31]. 16S rRNA sequencing was used to investigate how caffeine affects the composition of the gut microbiome. Compared to the NCD group, HFD mice have a substantial reduction in the abundance of *Bacteroidetes* and a proportional increase in *Firmicutes*, similar to previous studies [20]. However, caffeine further reduced *Bacteroidetes*, which seems likely that caffeine has its unique effect on the intestinal microbiome. *Bacteroidetes* is a Gram-negative bacterium containing LPS, a potent activator of toll-like receptor 4 (TLR4), which causes inflammatory responses and cytokine expression and secretion. In addition, lower *Bacteroidetes* may be associated with lower *Bacteroides* at the genus level. *Bacteroides*, *Lactobacillus* and *Lactococcus* containing bile salt hydrolase (BSH) can hydrolyze conjugated bile acids into unconjugated bile acids [37]. It has been reported that conjugated bile

acid is a nuclear farnesoid X receptor (FXR) antagonist [33]. Decreased BSH leads to increased conjugated bile acids, which increases the conversion of cholesterol to bile acids and reduces lipid accumulation. Likewise, in our plasma data, cholic acid, which was elevated in insulin-resistant mice and humans [9, 34], was decreased by caffeine, while glycocholic acid was increased. This may suggest that the improvement of dyslipidemia by caffeine may be related to bile acid metabolism. *Bifidobacterium* is a probiotic. In a human report, 16 healthy subjects drank a daily dose of 3 cups of coffee for three weeks, which raised the number of *Bifidobacterium* compared with human faeces before coffee consumption [35]. This bifidogenic effect of coffee was also discovered in animal models [32]. Meanwhile, caffeine also increased this probiotic in the NAFLD patients [36]. In accordance with our results, which hint the bifidogenic effect of coffee may be related to caffeine. Moreover, *Bifidobacterium* and *Ruminococcaceae* are short-chain fatty acid (SCFAs)-producing bacteria; SCFAs have been shown to increase gut barrier function [37] and stimulate pancreatic islet beta-cell growth and proliferation, regulate the body's insulin sensitivity [38]. *Desulfovibrio*, significantly elevated by caffeine, was shown to



**Fig. 14** Summary of pathway analysis of serum samples between between HFD and caffeine high-dose group

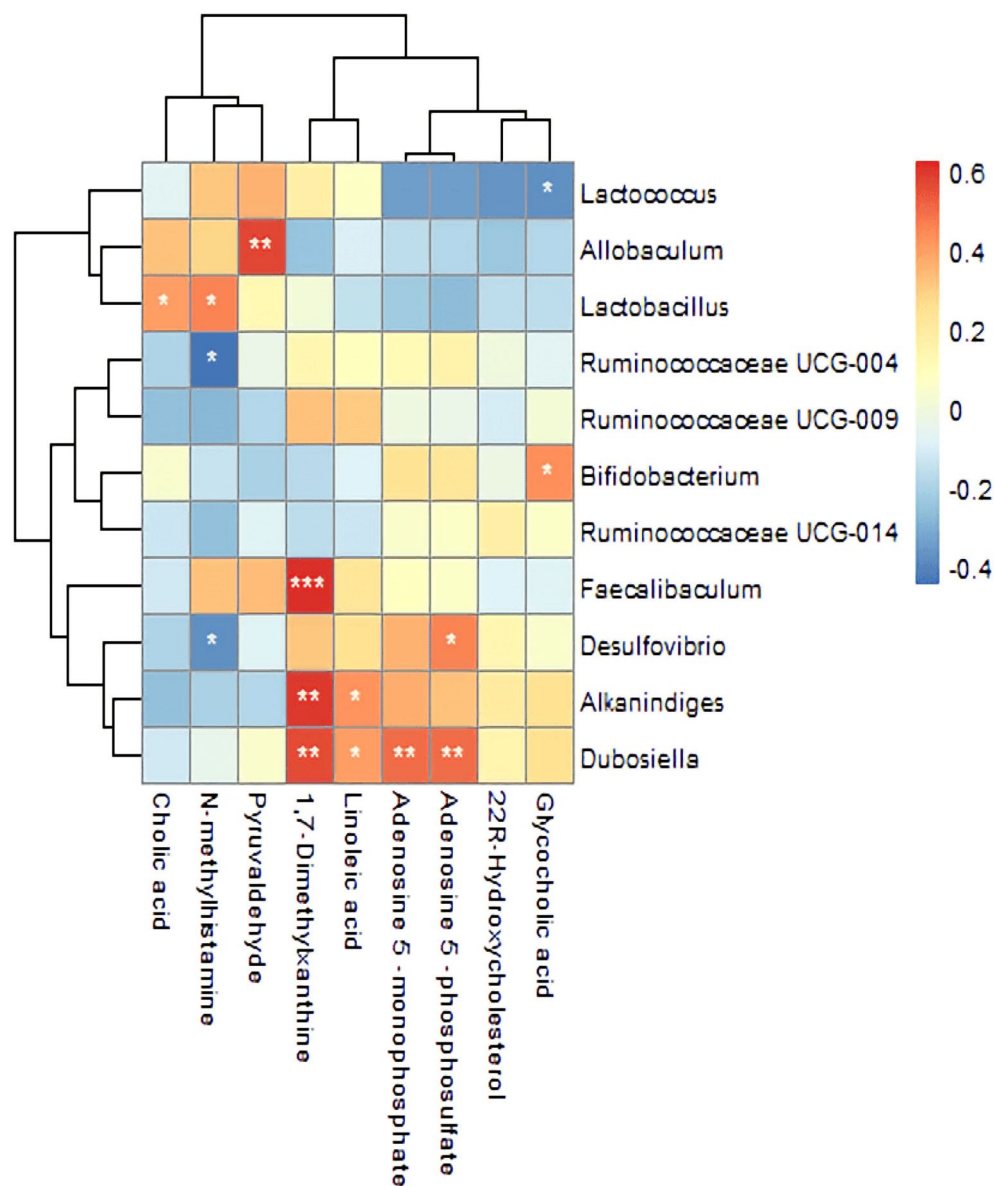
**Table 1** The differential metabolites in the pathway after caffeine treatment

Metabolites	VIP		FC		Trend		Pathway
	N v H	H v C	N v H	H v C	N v H	H v C	
Linoleic acid	-	1.56	-	1.34	-	↑*	a, i
Adenosine 5'-phosphosulfate	1.33	1.94	0.5	1.89	↑##	↑*	b, f
Adenosine 5'-monophosphate	1.26	1.94	0.52	1.79	↓##	↑*	f
Pyruvaldehyde	1.09	1.55	2.41	0.49	↑#	↓*	g
Cholic acid	-	1.99	-	0.45	-	↓***	c
Glycocholic acid	1.04	1.99	0.53	1.55	↓#	↑**	c
1,7-Dimethylxanthine	-	3.34	-	116.04	-	↑***	d
N-methylhistamine	1.07	1.73	1.37	0.77	↑#	↓*	h
22R-Hydroxycholesterol	1.24	1.66	0.39	1.9	↓##	↑*	j

NCD, HFD and caffeine high-dose (n = 9/10 per group) groups. # $p < 0.05$  as compared to NCD group; ## $p < 0.01$  as compared to NCD group; ### $p < 0.001$  as compared to NCD group; \* $p < 0.05$  as compared to HFD group; \*\* $p < 0.01$  as compared to HFD group; \*\*\* $p < 0.001$  as compared to HFD group; ↑, content increased; ↓, content decreased; vs, versus; N, NCD group; H, HFD group; C, caffeine high-dose; VIP, variable importance of projection; FC, fold change. a: Linoleic acid metabolism; b: Sulfur metabolism; c: Primary bile acid biosynthesis; d: Caffeine metabolism; e: Histidine metabolism; f: Purine metabolism; g: Pyruvate metabolism; h: Glycine, serine and threonine metabolism; i: Biosynthesis of unsaturated fatty acids; j: Steroid hormone biosynthesis

produce acetic acid and regulate liver lipid metabolism in mice to alleviate non-alcoholic fatty liver disease [39]; to produce H<sub>2</sub>S, which maintains lipid metabolism balance [40] and reduces systemic inflammation [41]. In addition, the present study also shown *Bifidobacterium*, *Ruminococcaceae* and *Desulfovibrio* were negatively associated with obesity indicators.

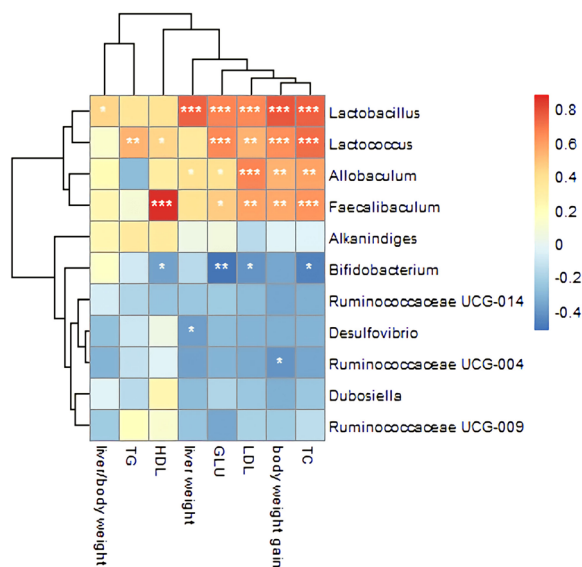
Serum metabolomics showed that the serum metabolites of the three groups were separated from each other. However, caffeine did not move the plasma metabolites of HFD mice closer to that of NCD mice, which may be the effect of caffeine as a foreign substance in the metabolism. Elevations of caffeine metabolites such as 1,7-Dimethylxanthine in plasma may illustrate this



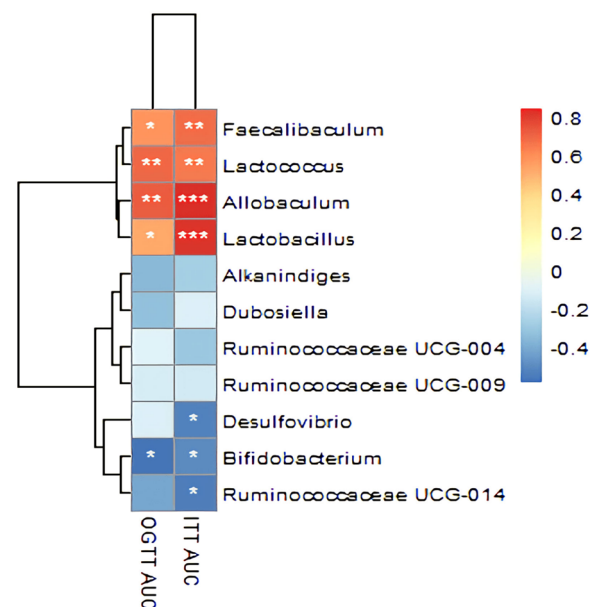
**Fig. 15** Correlation Analysis of Gut Microbiota and Serum Metabolomics. The colors of grids indicate the correlation analysis value of spearman's correlation analysis. Grids in red represent positive correlations (correlation analysis value more than 0.1), while grids in blue represent negative correlations (correlation analysis value less than -0.1). Color coding scale represents the correlation analysis value from heatmap, the deeper red or blue indicates higher correlation values. \* $p < 0.05$ , \*\* $p < 0.01$ , \*\*\* $p < 0.001$

point. In our data, 1,7-Dimethylxanthine was positively correlated with *Dubosiella*, *Alkanindiges* and *Faecalibaculum*, possibly indicating that changes in the intestinal microbiome are associated with caffeine metabolism. *Dubosiella* significantly elevated in response to caffeine, is not yet well studied. Still, this bacterium was negatively correlated with most inflammatory factors and indicators of obesity and positively associated with butyric acid [42, 43]. Moreover, *Dubosiella* is positively correlated with Adenosine 5'-monophosphate (AMP) and Linoleic acid,

which implies the relationship between *Dubosiella* and energy metabolism. Metabolic pathway enrichment analysis showed that caffeine could regulate Steroid hormone biosynthesis, Primary bile acid biosynthesis, Biosynthesis of unsaturated fatty acids, Glycine, serine and threonine metabolism, Linoleic acid metabolism, Pyruvate metabolism and so on. The Biosynthesis of steroid hormones, the Biosynthesis of primary bile acids and the Biosynthesis of unsaturated fatty acids are closely related to lipid metabolism. Disturbances in lipid metabolism often accompany



**Fig. 16** Correlation Analysis of Gut Microbiota and Physiological data. The colors of grids indicate the correlation analysis value of spearman's correlation analysis. Grids in red represent positive correlations (correlation analysis value more than 0.1), while grids in blue represent negative correlations (correlation analysis value less than -0.1). Color coding scale represents the correlation analysis value from heatmap, the deeper red or blue indicates higher correlation values. \* $p < 0.05$ , \*\* $p < 0.01$ , \*\*\* $p < 0.001$



**Fig. 17** Correlation Analysis of Gut Microbiota and Insulin resistance indicator. The Y-axis indicates the different abundance of the gut microbiota. The colors of grids indicate the correlation analysis value of spearman's correlation analysis. Grids in red represent positive correlations (correlation analysis value more than 0.1), while grids in blue represent negative correlations (correlation analysis value less than -0.1). Color coding scale represents the correlation analysis value from heatmap, the deeper red or blue indicates higher correlation values. \* $p < 0.05$ , \*\* $p < 0.01$ , \*\*\* $p < 0.001$

insulin resistance. In a study of the activity and function of the cytochrome P450 side-chain cleavage enzyme (CYP11A1), the rate-limiting enzyme for the conversion of cholesterol to pregnenolone, it was found that incubation of isolated mitochondria with the cholesterol analogue 22R-hydroxycholesterol resulted in the efficient formation of pregnenolone, the direct precursor for the synthesis of all steroid hormones [44]. Estrogen has been reported to increase insulin sensitivity [45]. Similarly, 22R-hydroxycholesterol is a natural ligand for the liver X receptor [LXR], and activation of LXR improves TNF $\alpha$ -induced insulin resistance in brown adipocytes [46]. All of the above suggests that the improvement of insulin resistance by caffeine may be related to steroid hormone synthesis. Glycine, serine, threonine, linoleic acid and pyruvate acid ultimately produce energy metabolism through the tricarboxylic acid cycle. Caffeine is known to activate beta receptors, increase plasma cAMP concentrations and promote lipolysis and beta-oxidation [47].

## Conclusion

This study illustrates the ameliorative effect of caffeine on diet-induced obesity mice by combining 16S rRNA Sequencing and plasma metabolomics. Caffeine

modulates plasma lipid metabolism disorders, ameliorates insulin resistance, and may change the gut microbial composition by promoting beneficial bacteria and reducing harmful bacteria. In addition, serum metabolomics suggests that caffeine may act by regulating bile acid metabolism, lipid metabolism and energy metabolism. The present study is the first article that caffeine can affect the gut microbiota and provides a possible mechanism of intestinal microbiota to account for the effect of caffeine on insulin resistance.

## Acknowledgements

Not applicable.

## Author contributions

LC Mouse experiment; XJW Article conception, Treatment and analysis of data, Drafting of the manuscript; JXC Critical revision; JCY Data processing and analysis; LL Research design; XBC and YSC Research conception and design, Critical revision. All authors reviewed the manuscript. All authors read and approved the final manuscript.

## Funding

This work was supported by General Program of the Natural Science Foundation of Guangdong Province, China [General Number 2019A1515010917], Science and Technology Planning Project of Shantou City [Grant Number 190430145264400], Grant for Key Disciplinary Project of Clinical Medicine under the Guangdong High-level University Development Program [Grant Number 002-18119101].



**Availability of data and materials**

Data are available upon reasonable request.

**Declarations****Ethics approval and consent to participate**

The Medical Animal Care & Welfare Committee of Shantou University Medical College agrees with the research design of this animal experiment (SUMC2019-413) which follows the National Guidelines for laboratory Animals.

**Consent for publication**

Not applicable.

**Competing interests**

The authors declare that they have no competing interests.

Received: 21 September 2022 Accepted: 7 February 2023

Published online: 08 March 2023

**References**

- Collaborators GBDO, Afshin A, Forouzanfar MH, et al. Health effects of overweight and obesity in 195 countries over 25 years. *N Engl J Med*. 2017;377(1):13–27.
- Williams EP, Mesidor M, Winters K, Dubbert PM, Wyatt SB. Overweight and obesity: prevalence, consequences, and causes of a growing public health problem. *Curr Obes Rep*. 2015;4(3):363–70.
- Piche ME, Tchernof A, Despres JP. Obesity phenotypes, diabetes, and cardiovascular diseases. *Circ Res*. 2020;126(11):1477–500.
- Polyzos SA, Kountouras J, Mantzoros CS. Obesity and nonalcoholic fatty liver disease: from pathophysiology to therapeutics. *Metabolism*. 2019;92:82–97.
- Masarwa PR, Brunetti VC, Aloe S, Henderson M, Platt RW, Filion KB. Efficacy and safety of metformin for obesity: a systematic review. *Pediatrics*. 2021. <https://doi.org/10.1542/peds.2020-1610>.
- Hu GL, Wang X, Zhang L, Qiu MH. The sources and mechanisms of bioactive ingredients in coffee. *Food Funct*. 2019;10(6):3113–26.
- Tian LW, Tao MK, Xu M, Hu J, Zhu HT, Xiong WY, et al. Carboxymethyl- and carboxyl-catechins from ripe Pu-er tea. *J Agric Food Chem*. 2014;62(50):12229–34.
- Jensen GS, Beaman JL, He Y, Guo Z, Sun H. Reduction of body fat and improved lipid profile associated with daily consumption of a Puer tea extract in a hyperlipidemic population: a randomized placebo-controlled trial. *Clin Interv Aging*. 2016;11:367–76.
- Komorita Y, Iwase M, Fujii H, et al. Additive effects of green tea and coffee on all-cause mortality in patients with type 2 diabetes mellitus: the Fukuoka diabetes registry. *BMJ Open Diabetes Res Care*. 2020. <https://doi.org/10.1136/bmjdr-2020-001252>.
- Yan SJ, Wang L, Li Z, et al. Inhibition of advanced glycation end product formation by Pu-erh tea ameliorates progression of experimental diabetic nephropathy. *J Agric Food Chem*. 2012;60(16):4102–10.
- Lee LS, Choi JH, Sung MJ, et al. Green tea changes serum and liver metabolomic profiles in mice with high-fat diet-induced obesity. *Mol Nutr Food Res*. 2015;59(4):784–94.
- Liu CW, Tsai HC, Huang CC, et al. Effects and mechanisms of caffeine to improve immunological and metabolic abnormalities in diet-induced obese rats. *Am J Physiol Endocrinol Metab*. 2018;314(5):E433–47.
- Muqaku B, Tahir A, Klepeisz P, et al. Coffee consumption modulates inflammatory processes in an individual fashion. *Mol Nutr Food Res*. 2016;60(12):2529–41.
- Yamauchi R, Kobayashi M, Matsuda Y, et al. Coffee and caffeine ameliorate hyperglycemia, fatty liver, and inflammatory adipocytokine expression in spontaneously diabetic KK-Ay mice. *J Agric Food Chem*. 2010;58(9):5597–603.
- Panchal SK, Wong WY, Kauter K, Ward LC, Brown L. Caffeine attenuates metabolic syndrome in diet-induced obese rats. *Nutrition*. 2012;28(10):1055–62.
- Guarino MP, Ribeiro MJ, Sacramento JF, Conde SV. Chronic caffeine intake reverses age-induced insulin resistance in the rat: effect on skeletal muscle Glut4 transporters and AMPK activity. *Age (Dordr)*. 2013;35(5):1755–65.
- Yeh TC, Liu CP, Cheng WH, et al. Caffeine intake improves fructose-induced hypertension and insulin resistance by enhancing central insulin signaling. *Hypertension*. 2014;63(3):535–41.
- Chavez-Valdez R, Wills-Karp M, Ahlawat R, Cristofalo EA, Nathan A, Gauda EB. Caffeine modulates TNF—production by cord blood monocytes: the role of adenosine receptors. *Pediatric Res*. 2009;65:203–8.
- Pittayanon R, Lau JT, Yuan Y, et al. Gut Microbiota in patients with irritable bowel syndrome—a systematic review. *Gastroenterology*. 2019;157(1):97–108.
- Ley RE, Bäckhed F, Turnbaugh P, Lozupone CA, Knight RD, Gordon JI. Obesity alters gut microbial ecology. *Proc Natl Acad Sci U S A*. 2005;102:11070–5.
- Strati F, Cavalieri D, Albanese D, et al. New evidences on the altered gut microbiota in autism spectrum disorders. *Microbiome*. 2017;5(1):24.
- Salazar N, Ruas-Madiedo P, Kolida S, et al. Exopolysaccharides produced by *Bifidobacterium longum* IPLA E44 and *bifidobacterium animalis* subsp *lactis* IPLA R1 modify the composition and metabolic activity of human faecal microbiota in pH-controlled batch cultures. *Int J Food Microbiol*. 2009;1353:260–7.
- Perez-Burillo S, Pastoriza S, Fernandez-Arteaga A, et al. Spent coffee grounds extract, rich in mannoooligosaccharides, promotes a healthier gut microbial community in a dose-dependent manner. *J Agric Food Chem*. 2019;67(9):2500–9.
- Cuervo A, Hevia A, Lopez P, et al. Phenolic compounds from red wine and coffee are associated with specific intestinal microorganisms in allergic subjects. *Food Funct*. 2016;7(1):104–9.
- Nakayama T, Oishi K. Influence of coffee (*Coffea arabica*) and galactooligosaccharide consumption on intestinal microbiota and the host responses. *FEMS Microbiol Lett*. 2013;343(2):161–8.
- Zhu MZ, Zhou F, Ouyang J, et al. Combined use of epigallocatechin-3-gallate (EGCG) and caffeine in low doses exhibits marked anti-obesity synergy through regulation of gut microbiota and bile acid metabolism. *Food Funct*. 2021;12(9):4105–16.
- Jing N, Liu X, Jin M, et al. Fubrick tea attenuates high-fat diet induced fat deposition and metabolic disorder by regulating gut microbiota and caffeine metabolism. *Food Funct*. 2020;11(8):6971–86.
- Song Z, Liu L, Xu Y, et al. Caffeine-induced sleep restriction alters the gut microbiome and fecal metabolic profiles in mice. *Int J Mol Sci*. 2022;23(23):14837.
- Liu F, Li S, Yu Y, Sun M, Xiang J, Li F. Effects of ammonia stress on the hemocytes of the pacific white shrimp *litopenaeus vannamei*. *Chemosphere*. 2020;239:124759.
- Hartstra AV, Bouter KE, Backhed F, Nieuwdorp M. Insights into the role of the microbiome in obesity and type 2 diabetes. *Diabetes Care*. 2015;38(1):159–65.
- Jiao N, Baker SS, Nugent CA, et al. Gut microbiome may contribute to insulin resistance and systemic inflammation in obese rodents: a meta-analysis. *Physiol Genomics*. 2018;504:244–54.
- Chiang JYL, Ferrell JM. Bile acids as metabolic regulators and nutrient sensors. *Annu Rev Nutr*. 2019;39:175–200.
- Huang F, Zheng X, Ma X, et al. Theabrownin from Pu-erh tea attenuates hypercholesterolemia via modulation of gut microbiota and bile acid metabolism. *Nat Commun*. 2019;10(1):4971.
- Rebecca A, Haeusler BA, Camastra S, Accili D, Ferrannini E. Human insulin resistance is associated with increased plasma levels of 12 $\alpha$ -hydroxylated bile acids. *Diabetes*. 2013;62:4184–91.
- Jaquet M, Rochat I, Moulin J, Cavin C, Bibiloni R. Impact of coffee consumption on the gut microbiota: a human volunteer study. *Int J Food Microbiol*. 2009;130(2):117–21.
- Mansour A, Mohajeri-Tehrani MR, Karimi S, et al. Short term effects of coffee components consumption on gut microbiota in patients with non-alcoholic fatty liver and diabetes: a pilot randomized placebo-controlled, clinical trial. *EXCLI J*. 2020;19:241–50.
- Martin-Gallausiaux C, Marinelli L, Blottiere HM, Larraufie P, Lapaque N. SCFA: mechanisms and functional importance in the gut. *Proc Nutr Soc*. 2021;80(1):37–49.

38. Liu JL, Segovia I, Yuan XL, Gao ZH. Controversial roles of gut microbiota-derived short-chain fatty acids (SCFAs) on pancreatic beta-cell growth and insulin secretion. *Int J Mol Sci*. 2020. <https://doi.org/10.3390/ijms21030910>.
39. Hong Y, Sheng L, Zhong J, et al. *Desulfovibrio vulgaris*, a potent acetic acid-producing bacterium, attenuates nonalcoholic fatty liver disease in mice. *Gut Microbes*. 2021;13(1):1–20.
40. Sun L, Zhang S, Yu C, et al. Hydrogen sulfide reduces serum triglyceride by activating liver autophagy via the AMPK-mTOR pathway. *Am J Physiol Endocrinol Metab*. 2015;309(11):E925–935.
41. Wallace JL, Motta JP, Buret AG. Hydrogen sulfide: an agent of stability at the microbiome-mucosa interface. *Am J Physiol Gastrointest Liver Physiol*. 2018;314(2):G143–9.
42. Wan F, Han H, Zhong R, et al. Dihydroquercetin supplement alleviates colonic inflammation potentially through improved gut microbiota community in mice. *Food Funct*. 2021;12(22):11420–34.
43. Li Y, Yan H, Zhang Y, et al. Alterations of the gut microbiome composition and lipid metabolic profile in radiation enteritis. *Front Cell Infect Microbiol*. 2020;10:541178.
44. Pagotto MA, Roldan ML, Pagotto RM, et al. Localization and functional activity of cytochrome P450 side chain cleavage enzyme (CYP11A1) in the adult rat kidney. *Mol Cell Endocrinol*. 2011;332(1–2):253–60.
45. Chen JQ, Brown TR, Russo J. Regulation of energy metabolism pathways by estrogens and estrogenic chemicals and potential implications in obesity associated with increased exposure to endocrine disruptors. *Biochim Biophys Acta*. 2009;1793(7):1128–43.
46. Fernandez-Veledo S, Nieto-Vazquez I, Rondinone CM, Lorenzo M. Liver X receptor agonists ameliorate TNF $\alpha$ -induced insulin resistance in murine brown adipocytes by downregulating protein tyrosine phosphatase-1B gene expression. *Diabetologia*. 2006;49(12):3038–48.
47. Harpaz E, Tamir S, Weinstein A, Weinstein Y. The effect of caffeine on energy balance. *J Basic Clin Physiol Pharmacol*. 2017;28(1):1–10.

### Publisher's Note

Springer Nature remains neutral with regard to jurisdictional claims in published maps and institutional affiliations.

Ready to submit your research? Choose BMC and benefit from:

- fast, convenient online submission
- thorough peer review by experienced researchers in your field
- rapid publication on acceptance
- support for research data, including large and complex data types
- gold Open Access which fosters wider collaboration and increased citations
- maximum visibility for your research: over 100M website views per year

At BMC, research is always in progress.

Learn more [biomedcentral.com/submissions](https://biomedcentral.com/submissions)

