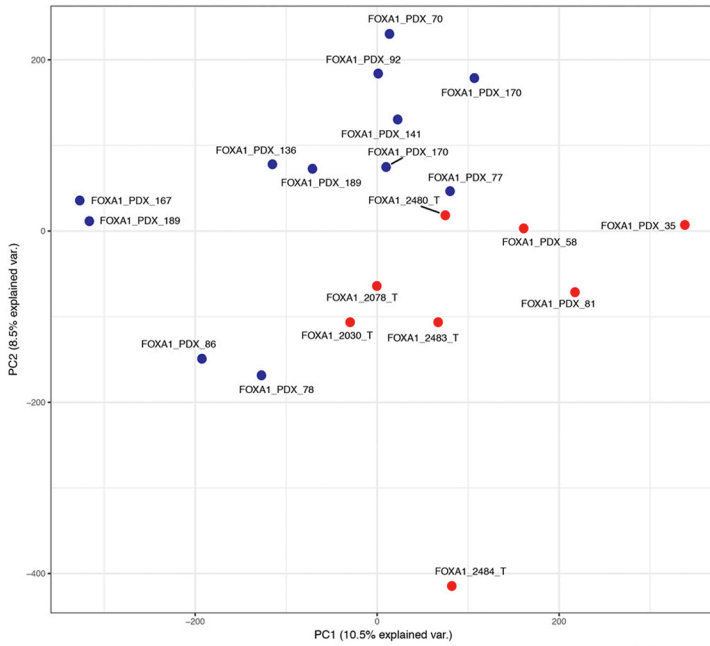
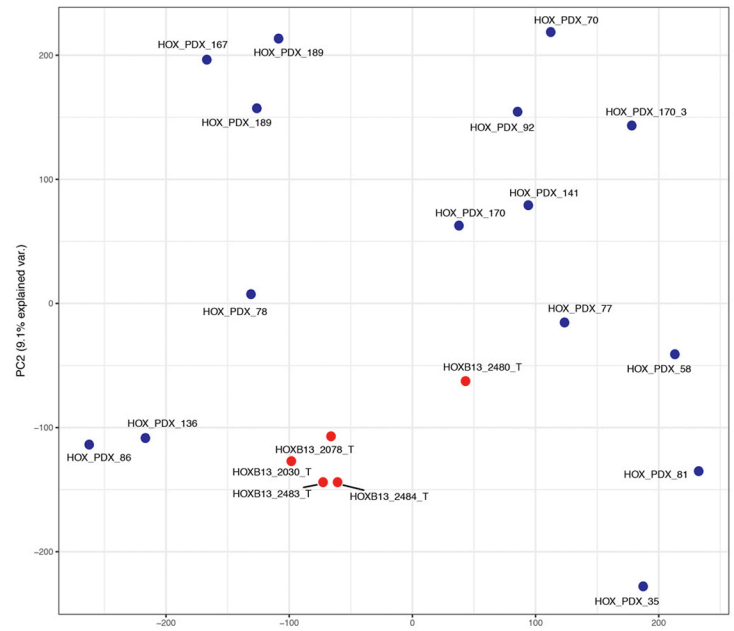


FOXA1 cistromes



HOXB13 cistromes



● mCRPC PDX
● localized tumor

Supplementary Figure 3: Principal component analysis of the FOXA1 and HOXB13 cistromes across FOXA1 and HOXB13 cistromes across localized prostate tumor and mCRPC states. Each dot represents the genome-wide FOXA1 (left panel) or HOXB13 (right panel) cistrome in an individual specimen, in localized prostate tumor (red) and in mCRPC (blue).