

Table S1 Search strategy

English Literature	
No.	Query
1.	"Spondylitis, Ankylosing"(Mesh)
2.	((Spondylitis, Ankylosing(Title/Abstract)) OR (Ankylosing Spondylitis(Title/Abstract))) OR (bekhterev*(Title/Abstract)) OR (bechterew*(Title/Abstract))
3.	ankylosing AND spondyl*
4.	#1 or #2 or #3
5.	(("Janus Kinase Inhibitors"(Mesh)) OR "Janus Kinase 1"(Mesh)) OR "Janus Kinase 2"(Mesh)
6.	"Janus Kinase Inhibitors" OR "jak1*" OR "jak-1*" OR "jak2*" OR "jak-2*" OR "JAK Inhibitor" OR "Tofacitinib" OR "Upadacitinib" OR "Ruxolitinib" OR "Baricitinib"
7.	#5 OR #6
8.	(("Tumor Necrosis Factor Inhibitors"(Mesh)) OR "Receptors, Tumor Necrosis Factor"(Mesh)) OR "Antibodies, Monoclonal"(Mesh)
9.	"Tumor Necrosis Factor Inhibitor" OR "Tumor Necrosis Factor alpha Inhibitor" OR "TNF Inhibitor" OR "TNF-a Inhibitor" OR "TNF alpha Inhibitor" OR "anti-tumor necrosis factor" OR "Anti-TNF- α drugs" OR "Anti-TNF agent" OR "anti-tnf" OR "Infliximab" OR "Adalimumab" OR "Golimumab" OR "Etanercept" OR "Certolizumabpegol"
10.	#8 OR #9
11.	"Interleukin Inhibitors"(Mesh)
12.	"Interleukin Inhibitors" OR "Interleukin 17 Inhibitor" OR "Interleukin 23 Inhibitor" OR "Interleukin 6 Inhibitor" OR "IL-17 Inhibitor" OR "IL-23 Inhibitor" OR "IL-6 Inhibitor" OR "IL Inhibitor" OR "Anti-IL-17" OR "Anti-IL-23" OR "Anti-IL-6" OR "Ixekezumab" OR "Bimekezumab" OR "Netakimab" OR "Secukinumab" OR "Risankizumab"
13.	#11 OR #12
14.	#7 OR #10 OR #13
15.	("Controlled Clinical Trial" (Publication Type)) OR "Randomized Controlled Trial" (Publication Type)
16.	"Randomized Controlled Trial" OR "Controlled Clinical Trial" OR "randomly" OR "trial" OR "Placebo" OR "RCT" OR "RCTs" OR "Random*"
17.	#15 OR #16
18.	#4 AND #14 AND #17
Chinese literature	
1.	“强直性脊柱炎”和“Tofacitinib, Xeljanz, 托法替尼, Golimumab, 欣普尼, 戈利木单抗, Upadacitinib, Rinvoq, 瑞福, 乌帕替尼, Infliximab, Remicade, 类克, 英夫利昔单抗, Etanercept, 恩利, 依那西普, Certolizumab, Cimzia, 希敏佳, 赛妥珠单抗, 培塞利珠单抗, Adalimumab, Humira, 修美乐, 阿达木单抗, Secukinumab, Cosentyx, 可善挺, 司库奇尤单抗, 苏金单抗, Ixekezumab, Taltz, 伊西贝单抗, Bimekezumab, Bimzelx, 比美吉珠单抗, Netakimab, Risankizumab, SKYRIZI, 瑞莎珠单抗”和“随机对照”

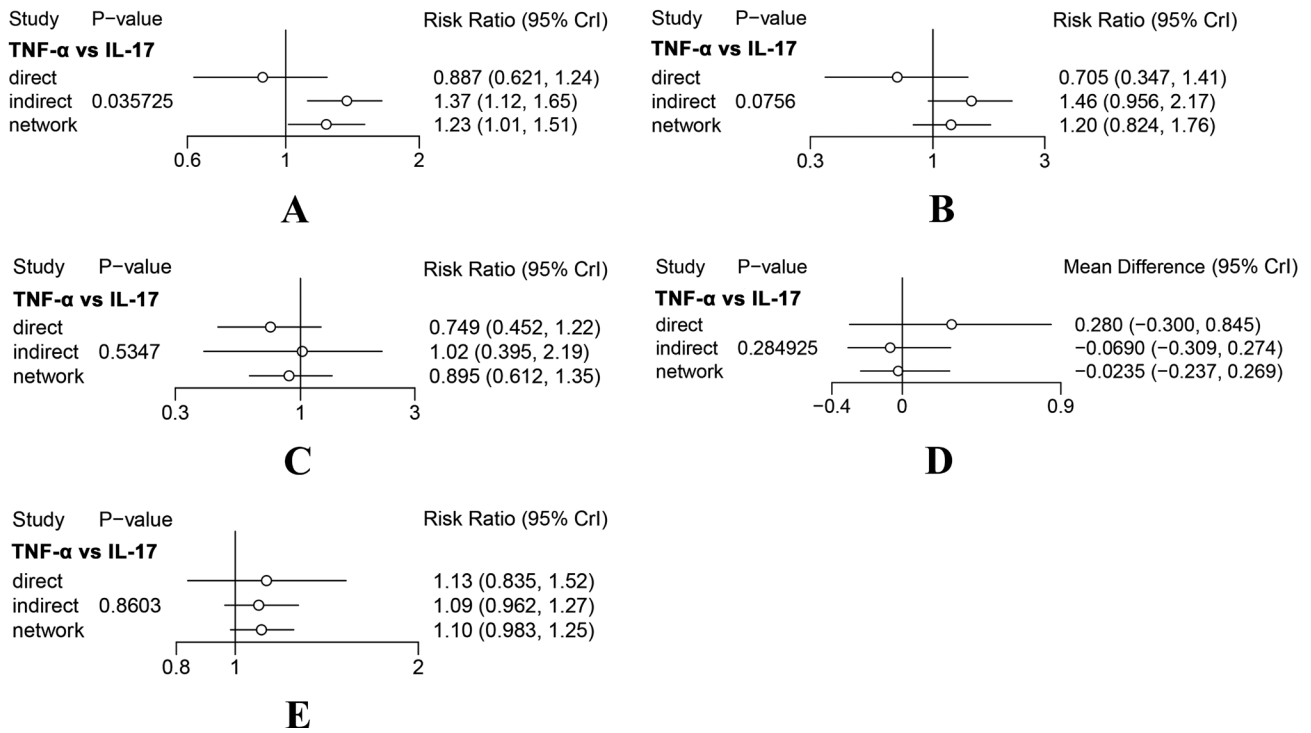


Figure S1 The node-splitting approach. (A) ASAS20; (B) ASAS40; (C) BASDAI50; (D) BASFI;(E) AEs. AEs, adverse events.

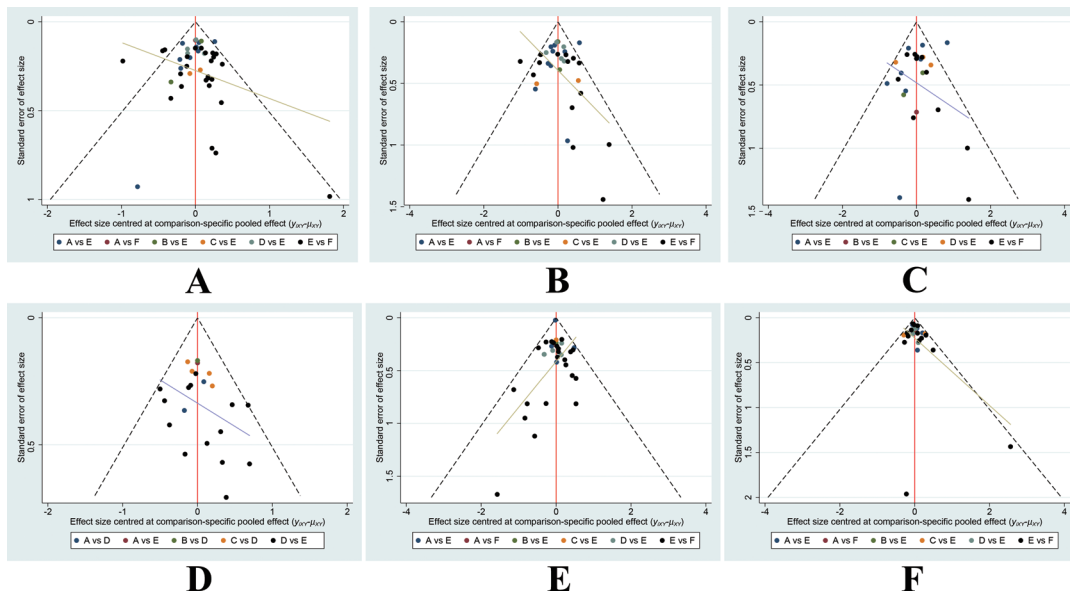


Figure S2 The funnel plot. (A) ASAS20; (B) ASAS40; (C) ASAS5/6; (D) BASDAI50; (E) BASFI;(F) AEs. AEs, adverse events.

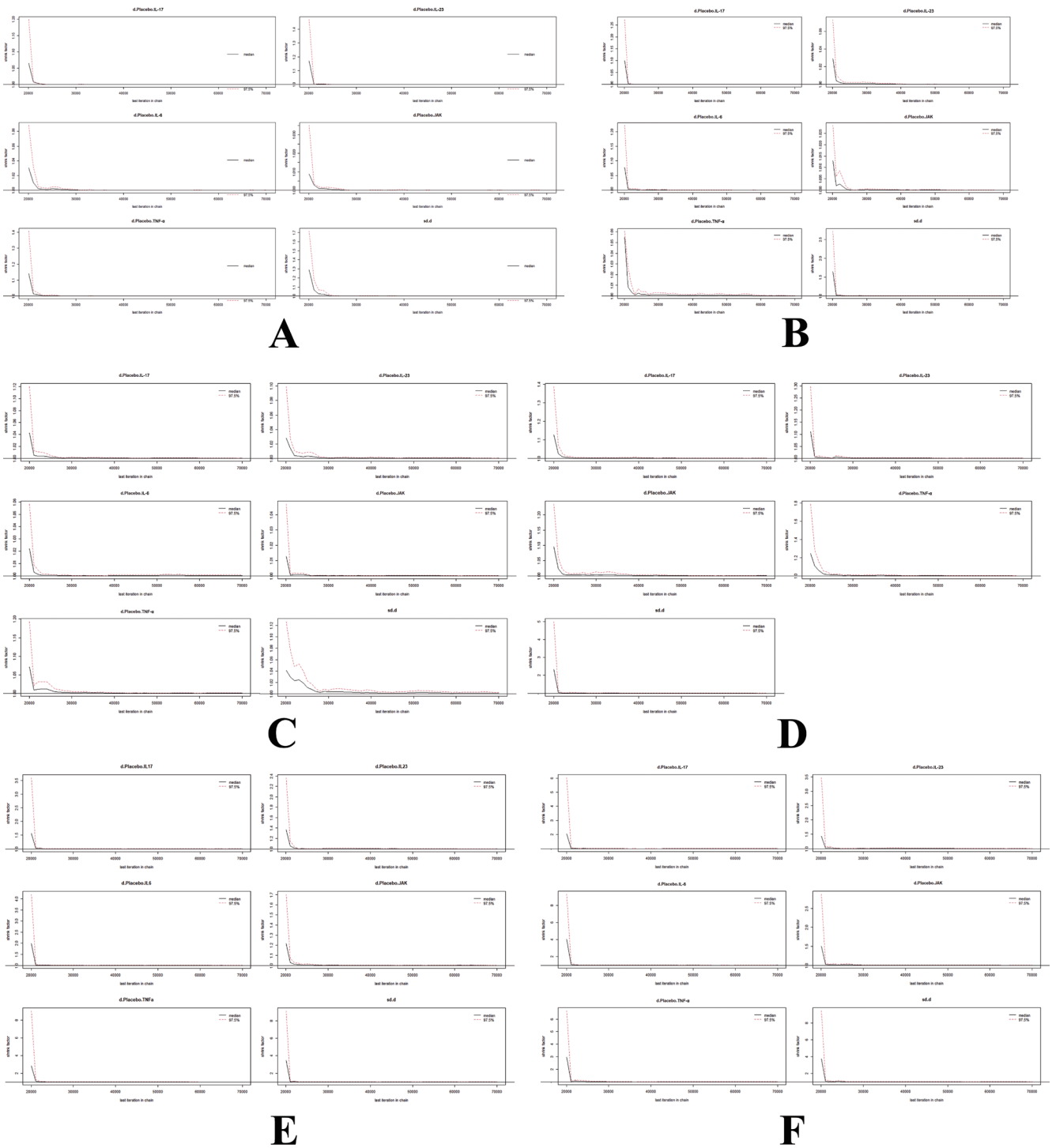


Figure S3 The Convergence Diagnostics plot. (A) ASAS20; (B) ASAS40; (C) ASAS5/6; (D) BASDAI50; (E) BASFI;(F) AEs. AEs, adverse events.

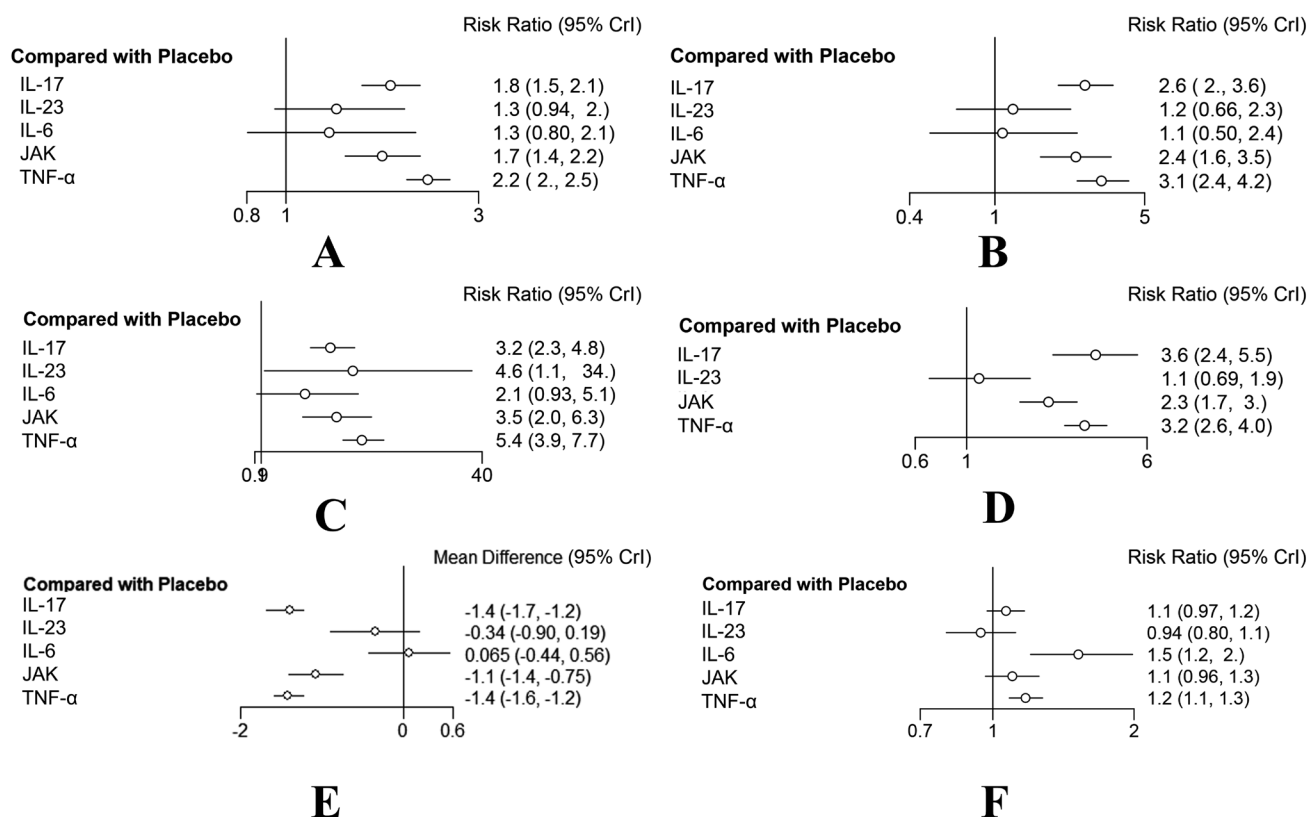


Figure S4 The forest plot. (A) ASAS20; (B) ASAS40; (C) ASAS5/6; (D) BASDAI50; (E) BASFI; (F) AEs. AEs, adverse events.

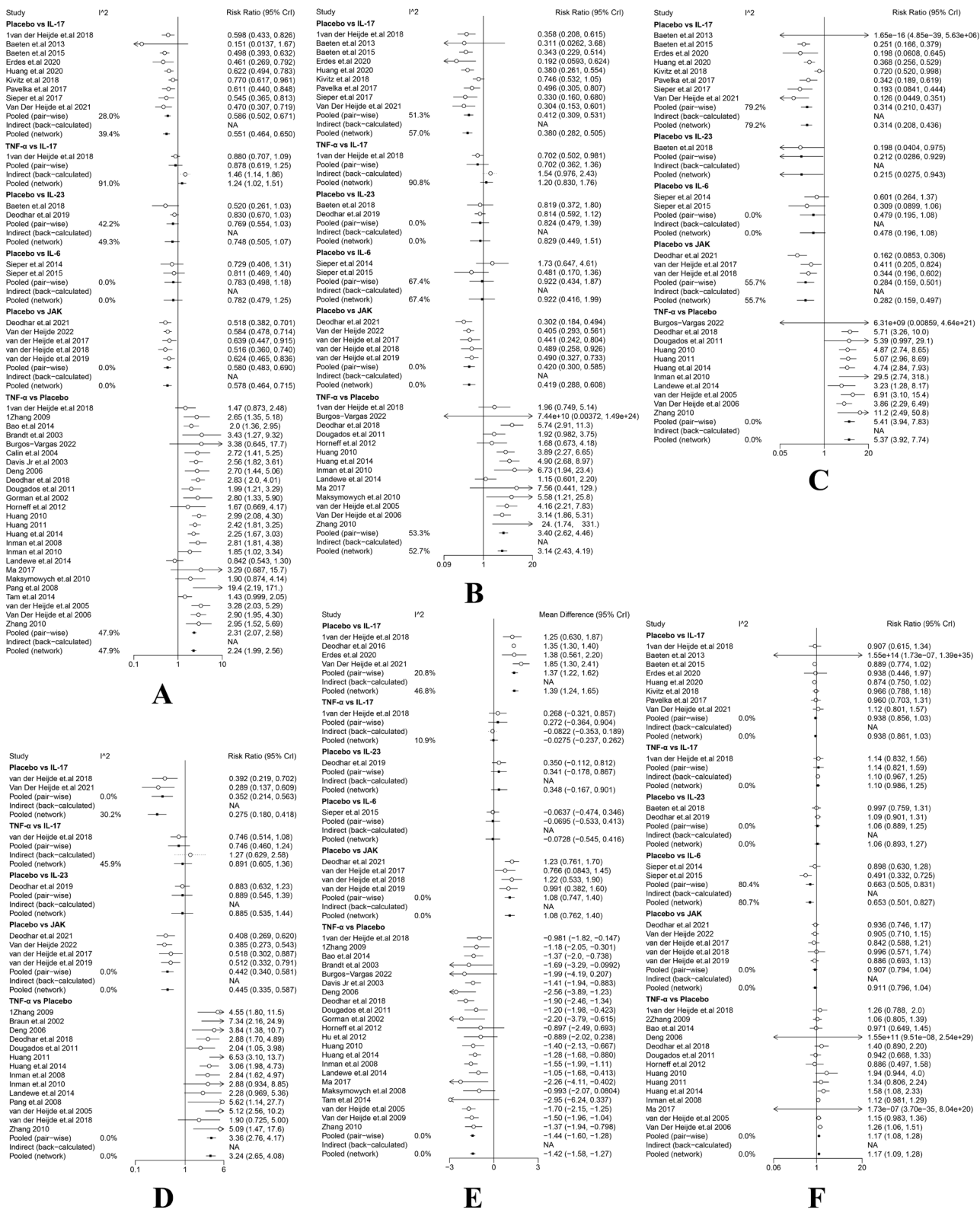


Figure S5 The Heterogeneity Analysis Plot. (A) ASAS20; (B) ASAS40; (C) ASAS5/6; (D) BASDAI50; (E) BASFI; (F) AEs. AEs, adverse events.