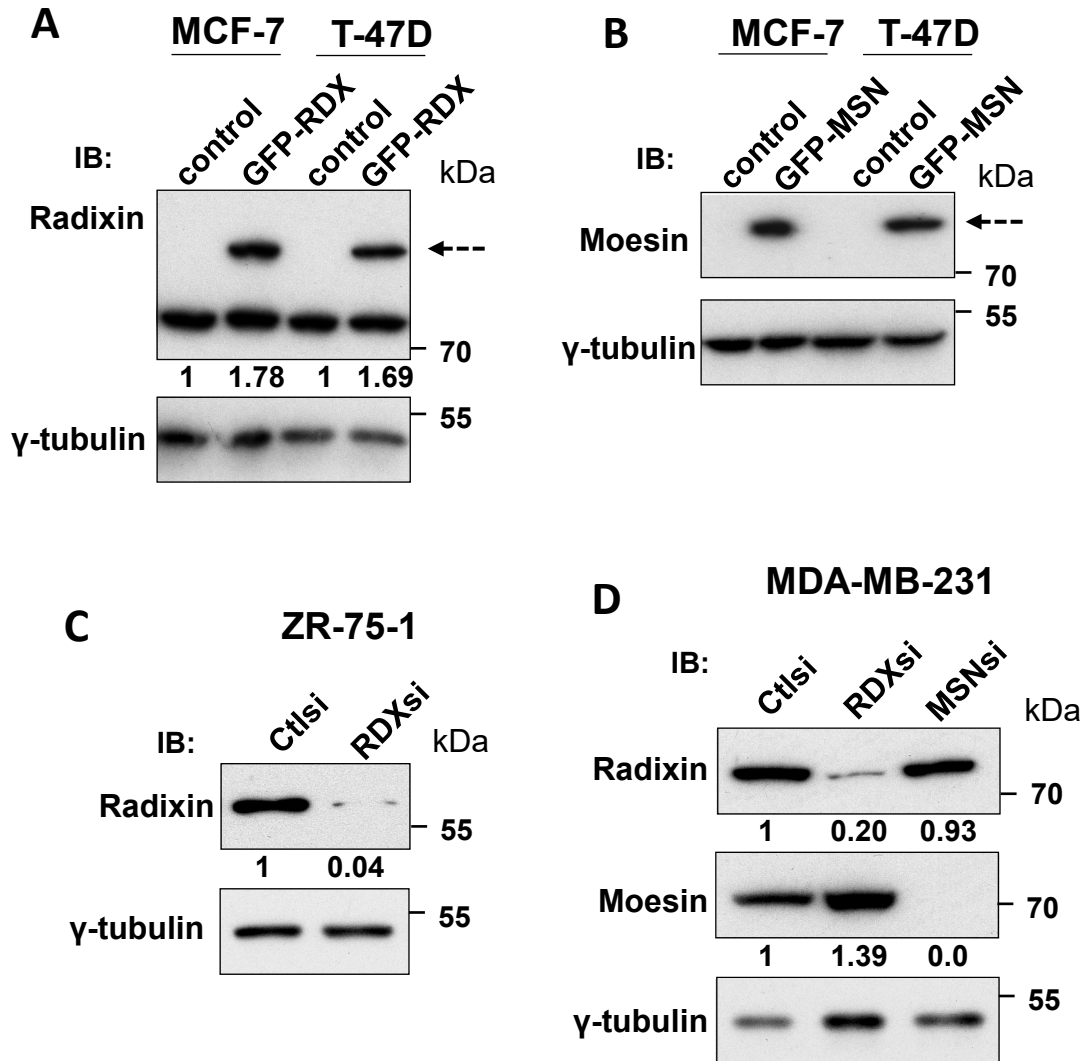


Supplementary Figure 2



Supplementary Figure 2. Quantitation of exogenous Radixin and Moesin levels or knockdown by siRNA

(A, B) Immunoblotting analysis of radixin and moesin in MCF-7 and T-47D cells expressing GFP-radixin (RDX) or GFP-moesin (MSN). Exogenous protein is indicated by the dotted arrow. Tubulin is shown as a loading control. Quantitation of radixin over-expression by densitometry is shown under the indicated immunoblot. Moesin over-expression was not quantified as MCF-7 and T-47D cells do not endogenously express this protein. (C, D) Immunoblotting analysis of radixin and/or moesin knockdown in ZR-75-1 or MDA-MB-231 cells. Tubulin is shown as a loading control. Quantitation of radixin and/or moesin knockdown by densitometry is shown under the indicated immunoblots. Moesin is not expressed in ZR-75-1 cells and was not treated with moesin siRNA. Images shown are representative of 3 independent experiments.