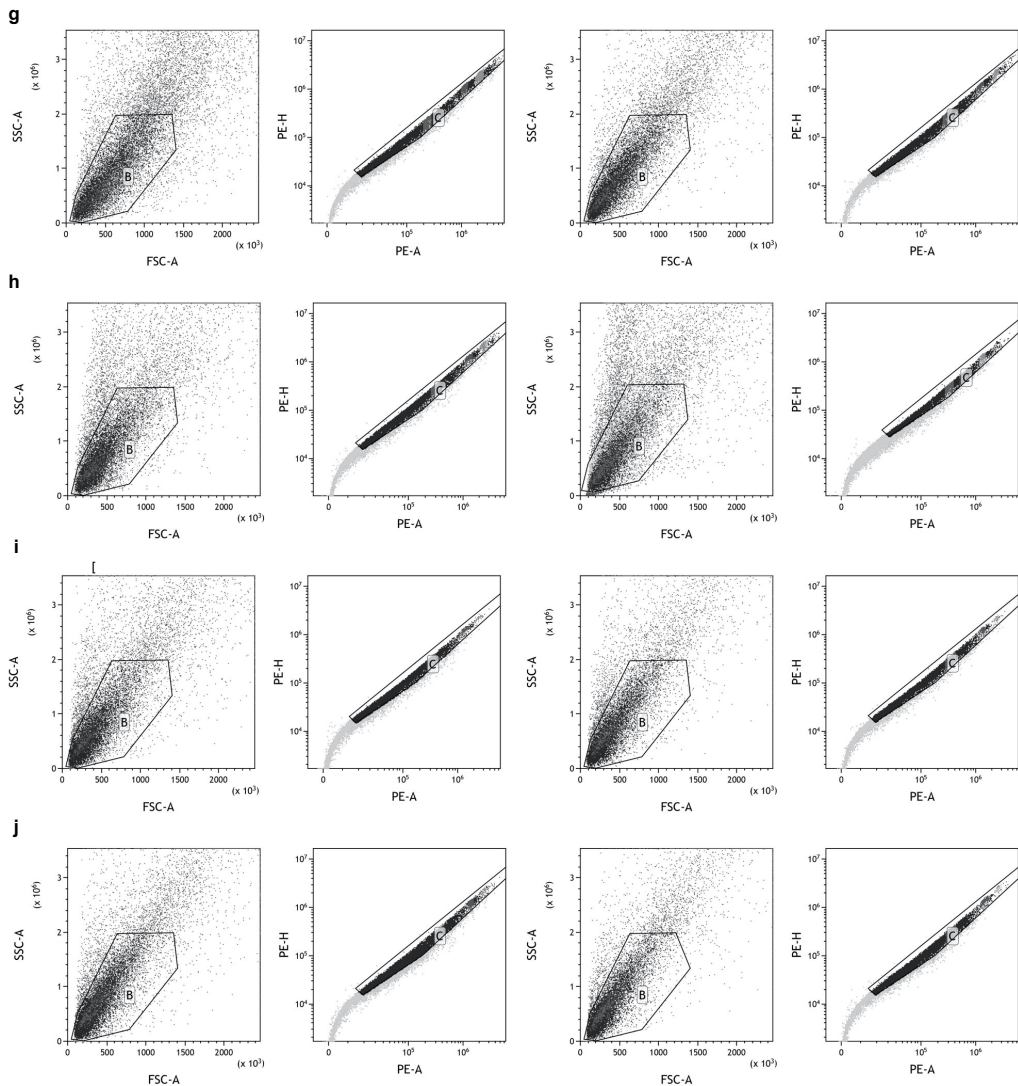


Source Data Extended Data Fig. 3 (a-f) The gating strategy of PI186338 (a), PI250656 (b), PI343841 (c), PI527388 (d) with two biological repeats, corresponding to Extended Data Fig.3. SSC: Lateral scattered light signal; FSC: Forward scattered light signal; PE-A: Relative fluorescence intensities of PI-stained nuclei.



Source Data Extended Data Fig. 3 (g-j) The gating strategy of PI186338 (g), PI250656 (h), PI343841 (i), PI527388 (j) with two biological repeats, corresponding to Extended Data Fig. 3. SSC: Lateral scattered light signal; FSC: Forward scattered light signal; PE-A: Relative fluorescence intensities of PI-stained nuclei.