

Figure S1

Study flowchart

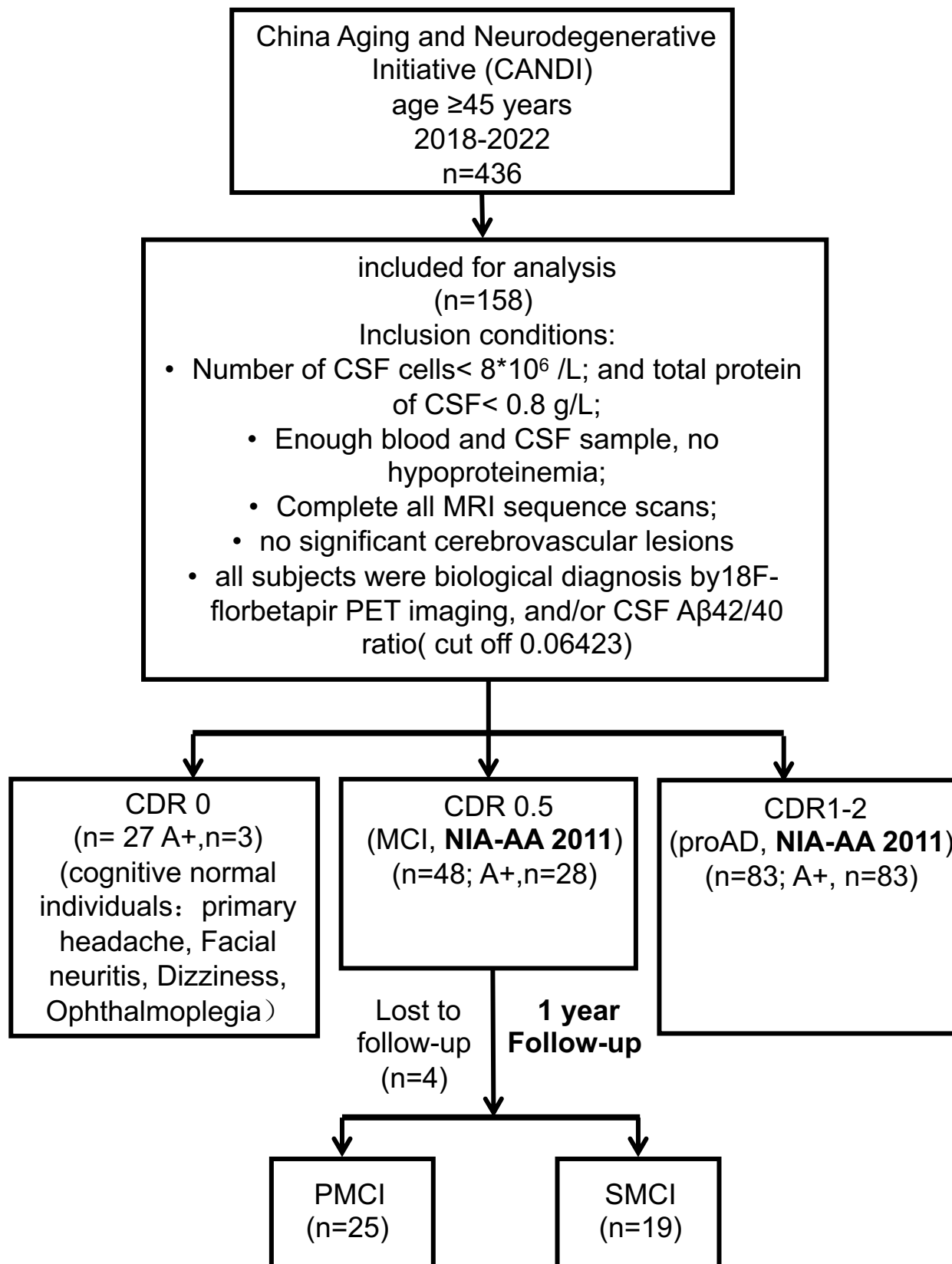


Figure S2

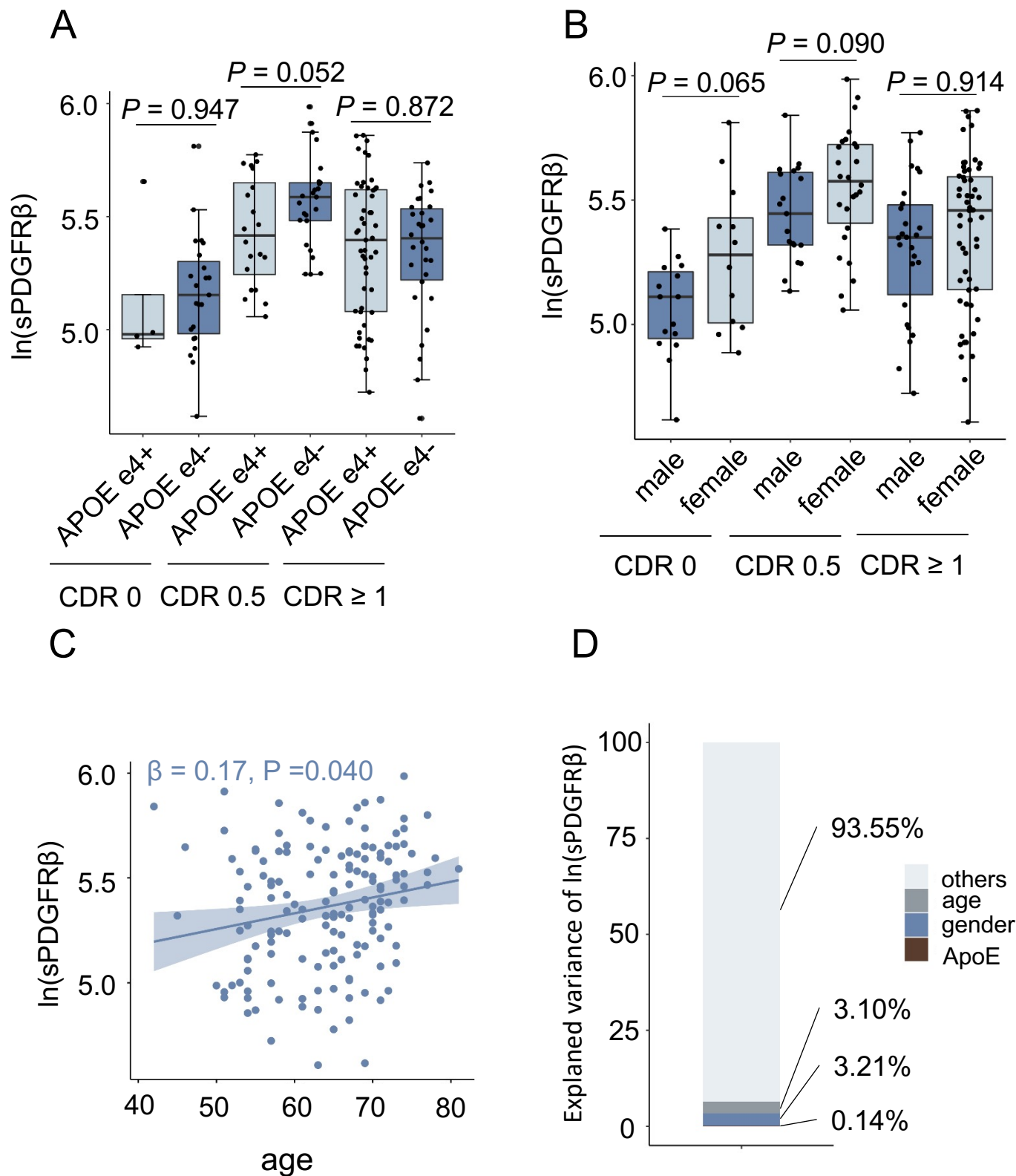


Figure S2. The potential effects of age, sex and APOE genotype on CSF sPDGFR β levels. (A) Comparison of CSF sPDGFR β levels between APOE genotype subgroups in CDR 0, CDR 0.5 and CDR 1-2 group. P -values were assessed by a one-way analysis of covariance (ANCOVA) adjusted by age, sex and CSF A β 42/40. $p < 0.05$ was considered statistically significant. (B) Comparison of CSF sPDGFR β levels between male and female in CDR 0, CDR 0.5 and CDR 1-2 group. P -values were assessed by a one-way analysis of covariance (ANCOVA) adjusted by age, APOE genotype and CSF A β 42/40. $p < 0.05$ was considered statistically significant. (C) P -values were assessed by multiple linear regression model, adjusted by sex, APOE genotype and CSF A β 42/40. $p < 0.05$ was considered statistically significant. (D) Contributions of age, sex and APOE genotype to the variance of CSF sPDGFR β levels.