

Cell Reports Methods, Volume 3

Supplemental information

**A FRET sensor for the real-time detection
of long chain acyl-CoAs
and synthetic ABHD5 ligands**

Emilio P. Mottillo, Ljiljana Mladenovic-Lucas, Huamei Zhang, Li Zhou, Christopher V. Kelly, Pablo A. Ortiz, and James G. Granneman

Table S1: Plasmid constructs used in this study. Related to Figure 1, Figure 4 and STAR Methods.

Construct	Basal FRET	Oleic Acid	SR3420	Note
ECFP-ABHD5- Plin5 ³⁸⁴⁻⁴¹⁷ -EYFP	+++	-	-	
ABHD5_cpVenus -Plin5 ³⁶⁰⁻⁴¹⁷ -CFP	++	-	-	
pCFP-ABHD5-YFP- PLIN5 ³⁸⁴⁻⁴¹⁷	++	Decrease FRET	Increase FRET	Cerulean and Citrine dimers
pCFP-ABHD5 ^{R299N} -YFP-PLIN5 ³⁸⁴⁻⁴¹⁷	++	Decrease FRET	Increase FRET	Defective PNPLA2 activation
pCFP-ABHD5 ^{R116N} -YFP-PLIN5 ³⁸⁴⁻⁴¹⁷	++	Decrease FRET	Not Determined	Defective LD binding
Lyn11-pCFP- ABHD5 ^{R116N} -YFP-PLIN5 ³⁸⁴⁻⁴¹⁷	++	Decrease FRET	Not Determined	Plasma membrane targeting

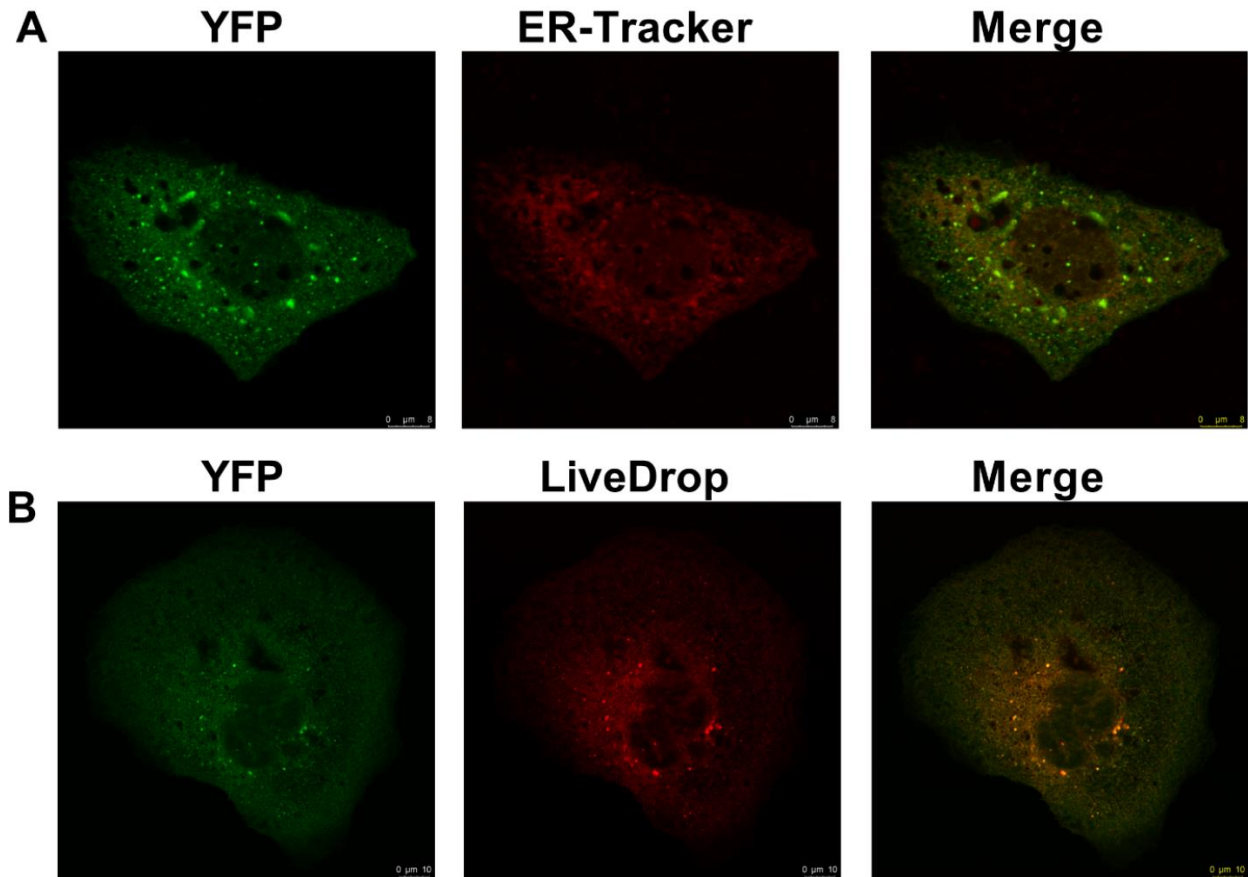


Figure S1. The LC-acyl-CoA sensor localized to ER and sites of de novo LD formation, related to Figure 1. A, U2OS cells transiently transfected with the ABHD5^{R299N} LC-acyl-CoA sensor (YFP, green) and stained with ER-tracker red (Red) demonstrating co-localization in the merged image (Merge). Scale bar, 8 μm. **B,** U2OS cells transiently transfected with the ABHD5^{R299N} LC-acyl-CoA sensor (YFP, green) and Cherry-LiveDrop (Red) demonstrating co-localization in the merged image (Merge). Scale bar, 10 μm. Results are from one experiments and representative of three independent experiments.

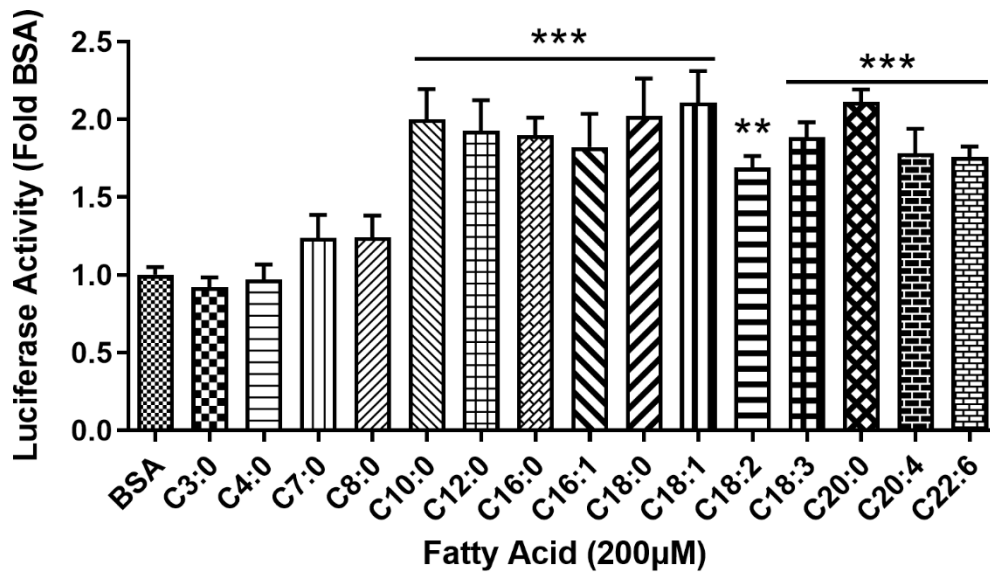


Figure S2. The LC-acyl-CoA sensor detects fatty acids of carbon chain length ≥ 10 , related to **Figure 2**. 293A cells were co-transfected with ABHD5-GlucC and PLIN5³⁸⁴⁻⁴¹⁷-GlucN and treated with BSA or the indicated fatty acids for 3 hrs. **, $P < 0.01$; ***, $P < 0.001$ compared to BSA as determined using one-way analysis of variance (ANOVA) with Dunnett's post t-test. Data was normalized to fold BSA and results are the average to two independent experiments.

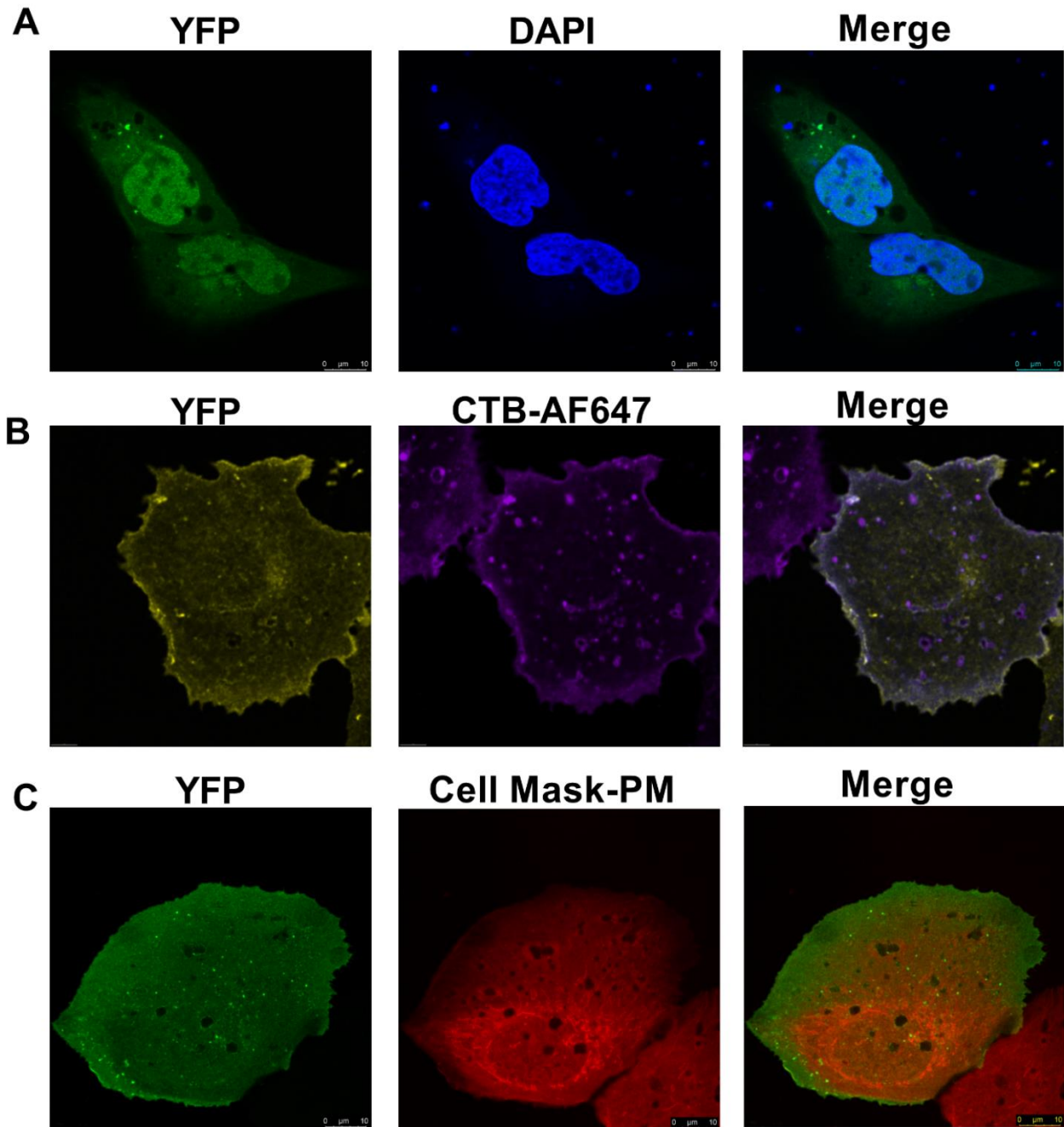


Figure S3. Organelle staining of targeted LC-acyl-CoA sensors, related to Figure 4. **A**, U2OS cells transiently transfected with the ABHD5^{R116N} LC-acyl-CoA sensor (YFP, green) and stained with for nuclei with DAPI demonstrating co-localization in the merged image (Merge). Scale bar, 10 μm. **B**, U2OS cells transiently transfected with the Lyn11 tagged ABHD5^{R116N} LC-acyl-CoA sensor (YFP, yellow) and stained with Cholera Toxin B conjugated Alex Fluor 647 (CTB-AF647, Magenta)

demonstrating co-localization in the merged image (Merge). **C**, U2OS cells transiently transfected with the Lyn11 tagged ABHD5^{R116N} LC-acyl-CoA sensor (YFP, green) and stained with CellMask Deep Red Plasma Membrane Stain (Cell Mask-PM, Red) demonstrating co-localization in the merged image (Merge). Scale bar, 10 μ m. Results are from one experiment and are representative of three independent experiments.