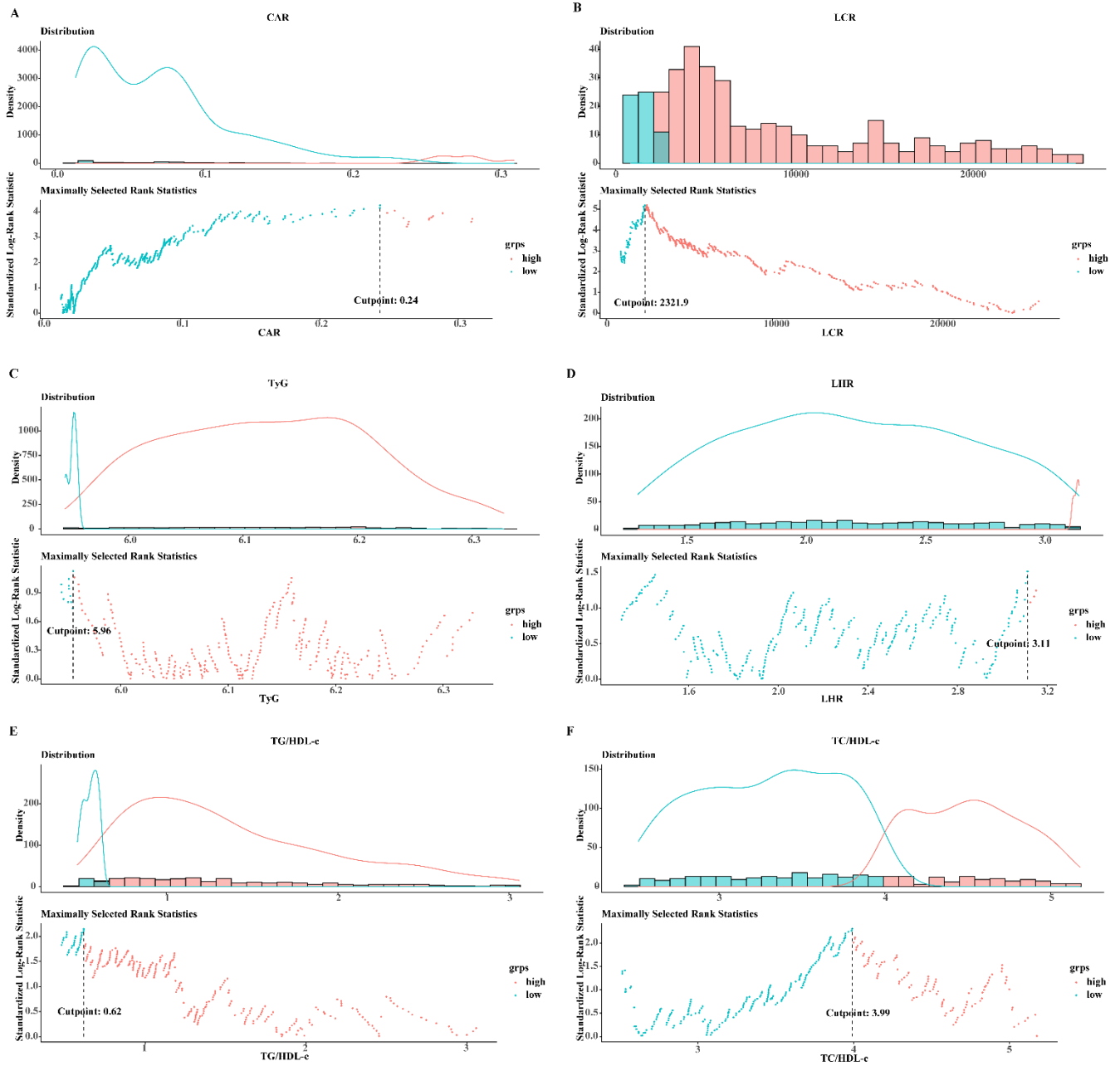


Supplementary Information

Fig. S1



**Fig. S1** Optimal cut-off value of LHR.

(A) CAR; (B) LCR; (C) TyG; (D) LHR; (E) TG/HDL-c; (F) TC/HDL-c.

Notes: LCR: lymphocyte to C-reactive protein ratio; CAR: C-reactive protein to albumin ratio; TyG: triglyceride-glucose index; LHR: LDL-c/HDL-c ratio; HDL-c: high-density lipoprotein cholesterol; LDL-c: low-density lipoprotein cholesterol.