

**Supplementary data**

**Supplementary Table 1. Periprocedural complications.**

	Ticagrelor Or Prasugrel (N=2,860)	Clopidogrel (N=8,648)	P-Value
Side Branch Closure	71 (2.5%)	176 (2.0%)	0.152
Tamponade	0 (0.0%)	3 (0.0%)	1
Slow Flow/No Flow	30 (1.0%)	90 (1.0%)	0.97
Vessel Closure	8 (0.3%)	14 (0.2%)	0.211
<b>Vascular Complications</b>			
Access Site Occlusion	0 (0.0%)	0 (0.0%)	N/A
Distal Embolism	0 (0.0%)	2 (0.0%)	1
Dissection	1 (0.0%)	5 (0.1%)	1
Pseudoaneurysm (Psa)	3 (0.1%)	17 (0.2%)	0.439
Arteriovenous (Av) Fistula	0 (0.0%)	1 (0.0%)	1

**Supplementary Table 2. Propensity score stratification outcomes comparing prasugrel 5 mg and prasugrel 10 mg versus clopidogrel.**

<b>Outcome</b>	<b>Prasugrel - 5mg Dose (N=527)</b>	<b>Clopidogrel (N=8,637)</b>	<b>Log-Rank P-Value</b>	<b>Unadjusted Hazard Ratio (95% Ci)</b>	<b>P-Value</b>
Composite (Death, Myocardial Infarction, Stroke, Or Stent Thrombosis)	9 (2.0%)	223 (3.1%)	0.167	0.63 (0.32 - 1.22)	0.171

<b>Outcome</b>	<b>Prasugrel - 10mg Dose (N=553)</b>	<b>Clopidogrel (N=8,637)</b>	<b>Log-Rank P-Value</b>	<b>Unadjusted Hazard Ratio (95% Ci)</b>	<b>P-Value</b>
Composite (Death, Myocardial Infarction, Stroke, Or Stent Thrombosis)	12 (2.5%)	223 (3.1%)	0.417	0.79 (0.44 - 1.41)	0.419

**Supplementary Table 3. Adjusted associations between meds at discharge and adverse events at 1 year after index procedure, stratified by Academic Research Consortium high bleeding risk.**

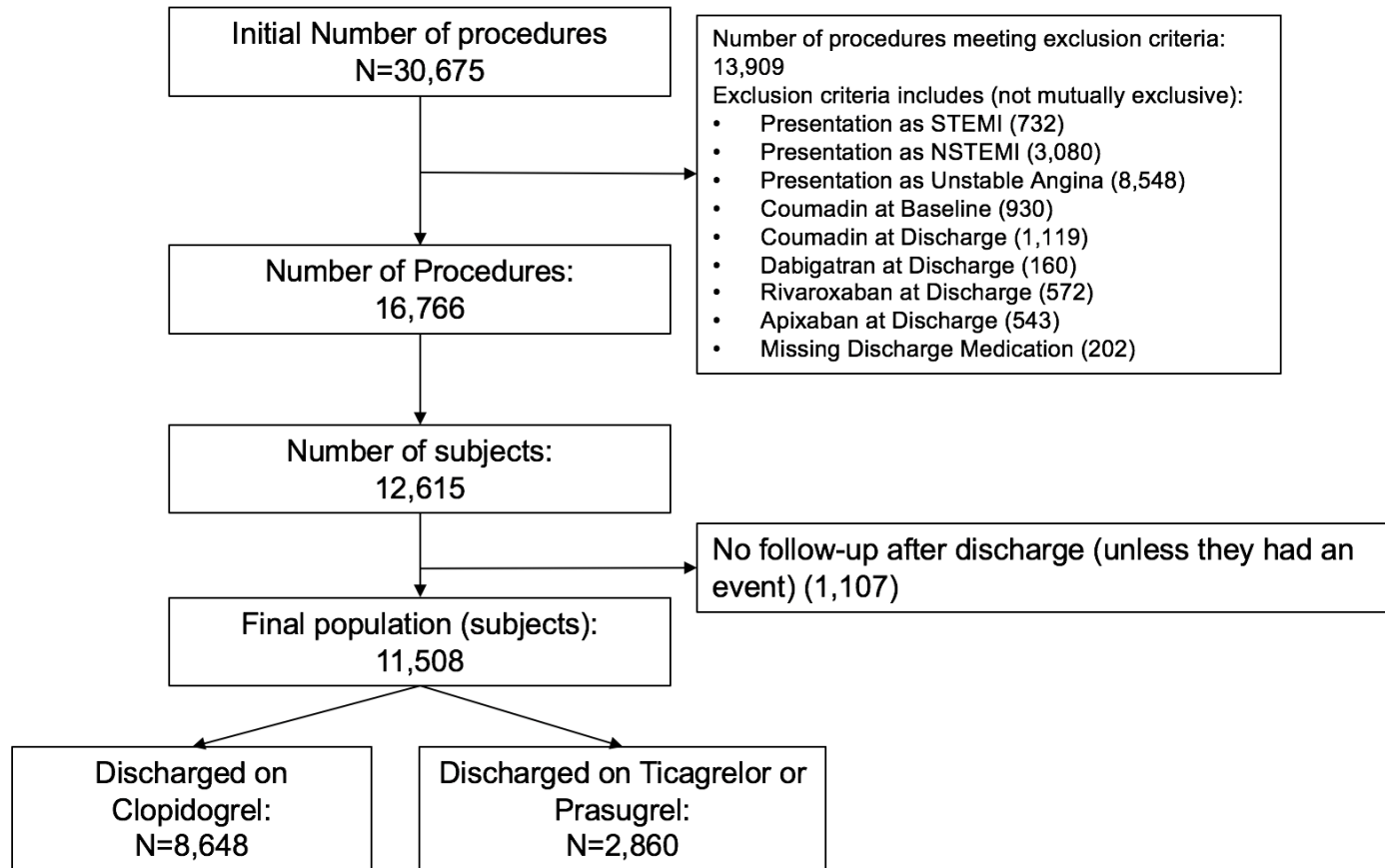
Outcomes	Hbr (N=4536)				No Hbr (N=6972)				Interaction P-Value <sup>‡</sup>
	Ticagrelor Or Prasugrel (N= 798)	Clopidogrel (N=3738)	Adjusted Hazard Ratio <sup>†</sup> (95% Ci)	P-Value	Ticagrelor Or Prasugrel (N=2062)	Clopidogrel (N=4910)	Adjusted Hazard Ratio <sup>†</sup> (95% Ci)	P-Value	
Death, Mi, Stroke, Or Stent Thrombosis	34 (5.1%)	159 (5.2%)	0.91 (0.61 - 1.35)	0.63	34 (1.9%)	64 (1.5%)	1.13 (0.71 - 1.79)	0.603	0.58
Death	13 (2.0%)	91 (3.0%)	0.71 (0.39 - 1.30)	0.27	12 (0.7%)	17 (0.4%)	1.42 (0.58 - 3.47)	0.444	0.246
Mi	19 (2.8%)	68 (2.3%)	1.04 (0.59 - 1.84)	0.894	20 (1.1%)	36 (0.9%)	1.36 (0.76 - 2.44)	0.303	0.866
Stroke	4 (0.6%)	10 (0.3%)	2.41 (0.70 - 8.28)	0.161	1 (0.1%)	9 (0.2%)	0.17 (0.02 - 1.34)	0.092	0.085
Definite Or Probable Stent Thrombosis	4 (0.5%)	10 (0.3%)	1.48 (0.38 - 5.72)	0.571	7 (0.4%)	10 (0.2%)	1.15 (0.40 - 3.31)	0.788	0.996
Bleeding (Follow-Up)	10 (1.5%)	74 (2.3%)	0.56 (0.27 - 1.18)	0.129	15 (0.8%)	41 (0.9%)	1.01 (0.54 - 1.90)	0.963	0.387

Ci: Confidence Interval, Hbr: High Bleeding Risk, Mi: Myocardial Infarction

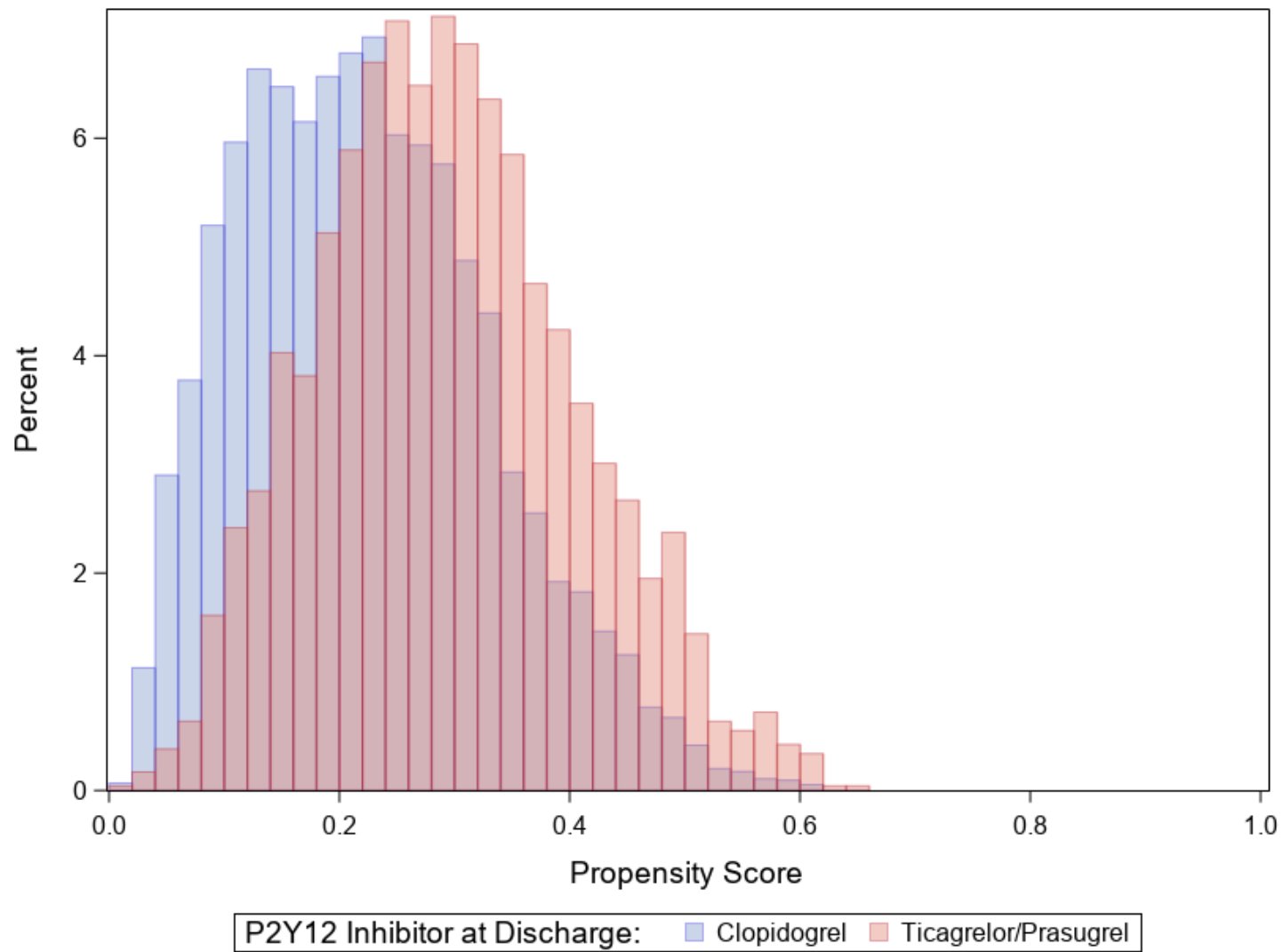
<sup>†</sup> Model Adjusted For Age, Sex, Bmi, Race, Current Smoker, Hypertension, Hyperlipidemia, Cerebrovascular Disease, Prior Mi, Prior Cabg, Lvef, Calcification-Severe/Moderate, Cto, Cmplx Pci, Diabetes, And Ckd.

<sup>‡</sup> P Value Is Obtained From The Interaction Test Between Hbr And P2y12 Inhibitor Prescribed At Discharge After Applying Model Adjustment

The Percentages Mentioned Above Represent K-M Rates At 12 Months After Index Procedure



**Supplementary Figure 1.** Study inclusion flowchart.



Supplementary Figure 2. Distribution of propensity scores.