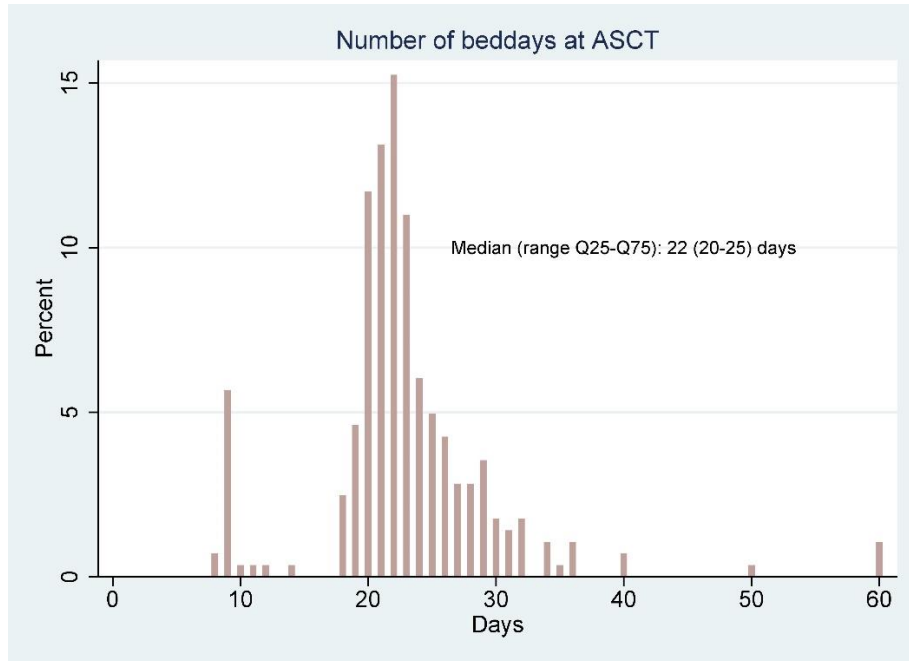


# Supplemental materials

**sTable 1.** International Classification of Diseases 10th Revision (ICD-10) and associated codes.

<b>ICD-10 chapter</b>	<b>ICD-10 codes</b>	<b>Abbreviation</b>
Neoplasms	C00 - D48	Neoplasms
Diseases of the circulatory system	I00 - I99	Circulatory disorders
Infectious diseases	A00 - B99	Infections
Mental and behavioural disorders	F00 - F99	Mental
Diseases of the respiratory system	J00 - J99	Respiratory
Diseases of the genitourinary system	N00 - N99	Genitourinary
Symptoms, signs and abnormal clinical and laboratory findings, not elsewhere classified	R00 - R99	Symptoms
Injury, poisoning and certain other consequences of external causes	S00 - T98	Injuries
Diseases of the blood and blood-forming organs	D50 - D89	Blood
Endocrine, nutritional and metabolic diseases	E00 - E90	Endocrine
Diseases of the nervous system	G00 - G99	Nervous
Diseases of the eye and adnexa or diseases of the ear and mastoid process	H00 - H59 and H60 - H95	CNS
Diseases of the digestive system	K00 - K93	Digestive
Diseases of the skin and subcutaneous tissue	L00 - L99	Skin
Diseases of the musculoskeletal system	M00 - M99	Musculoskeletal

**Figure 1.** Number of bed days during high-dose chemotherapy with autologous stem cell transplantation (HD-ASCT) treatment among patients selected for HD-ASCT within 12 months from diagnosis (n= 247). Early discharge from inpatient clinic to specialist outpatient care will result in lower number of bed days for some patients.

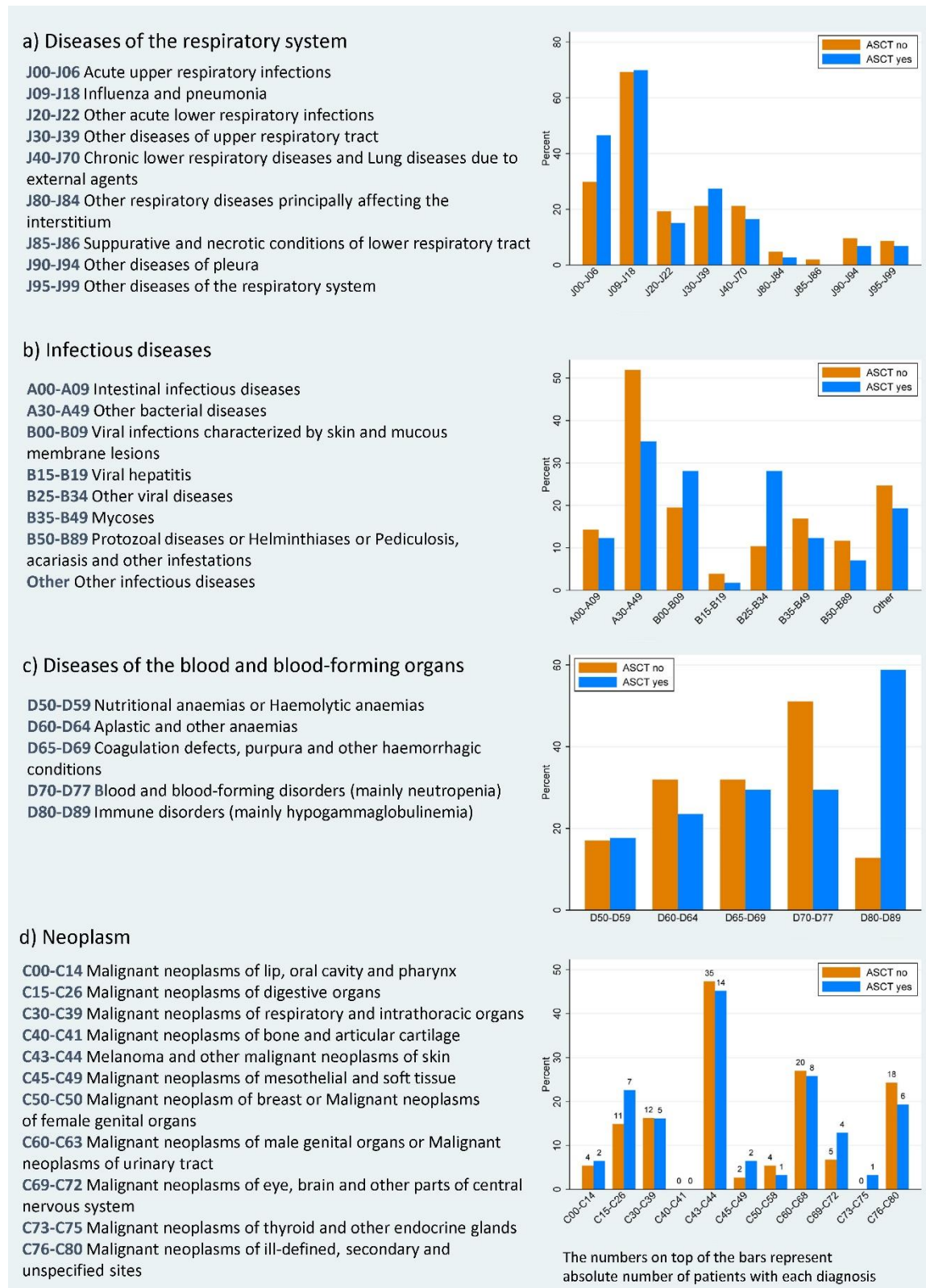


**sTable 2.** Incidence rate ratios (IRRs) with 95% confidence intervals (CIs) of outpatient specialist visits (excluding routine follow-up visits for the mantle cell lymphoma), hospitalizations, and bed days from one year after diagnosis.

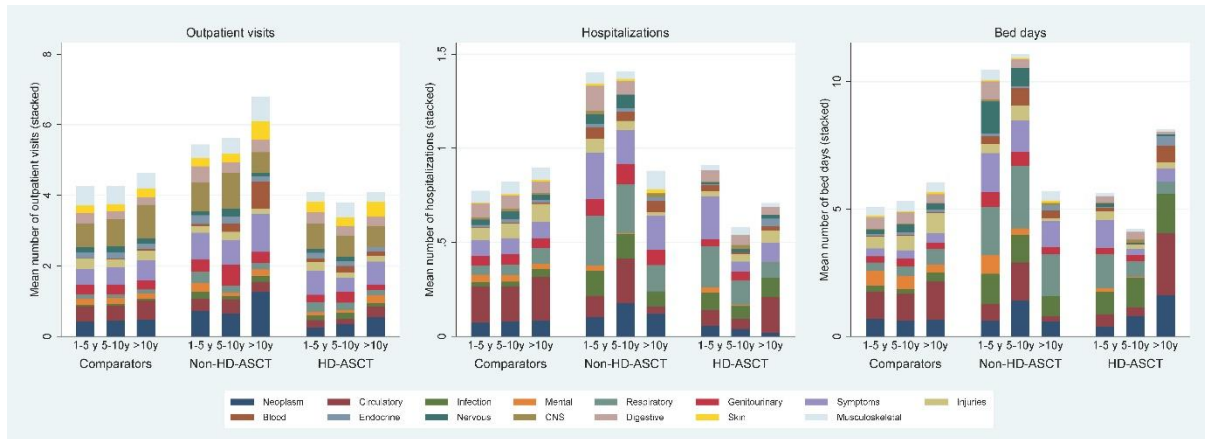
	Outpatient specialist visit IRR (95 % CI) <sup>1</sup>	Hospitalization IRR (95 % CI)	Bed days IRR (95 % CI)
<b>Blood</b>			
MCL vs comparators	5.61 (3.07,10.23)	24.58 (13.40,45.11)	115.04 (27.07,488.86)
HD-ASCT <sup>2</sup> vs. non-HD-ASCT	0.96 (0.31, 2.98)	0.60 (0.21, 1.72)	3.26 (0.26,40.78)
<b>Infection</b>			
MCL vs comparators	4.79 (3.36, 6.82)	8.20 (5.88,11.44)	8.89 (4.46,17.75)
HD-ASCT <sup>2</sup> vs. non-HD-ASCT	1.02 (0.52, 1.98)	1.22 (0.66, 2.23)	1.47 (0.40, 5.43)
<b>Respiratory</b>			
MCL vs comparators	3.60 (2.61, 4.95)	5.96 (4.29, 8.28)	6.12 (3.53,10.60)
HD-ASCT <sup>2</sup> vs. non-HD-ASCT	1.33 (0.72, 2.44)	1.25 (0.67, 2.32)	0.93 (0.32, 2.70)
<b>Digestive</b>			
MCL vs comparators	1.72 (1.36, 2.17)	1.34 (0.96, 1.87)	1.07 (0.63, 1.80)
HD-ASCT <sup>2</sup> vs. non-HD-ASCT	0.78 (0.50, 1.22)	0.92 (0.48, 1.78)	0.85 (0.30, 2.39)
<b>Neoplasm</b>			
MCL vs comparators	1.48 (1.05, 2.10)	1.36 (0.87, 2.12)	1.40 (0.71, 2.76)
HD-ASCT <sup>2</sup> vs. non-HD-ASCT	0.59 (0.30, 1.16)	0.49 (0.20, 1.21)	0.94 (0.26, 3.39)
<b>Skin</b>			
MCL vs comparators	1.70 (1.30, 2.21)	2.62 (1.03, 6.70)	1.75 (0.26,11.66)
HD-ASCT <sup>2</sup> vs. non-HD-ASCT	1.51 (0.91, 2.50)	0.83 (0.13, 5.23)	...
<b>Symptoms</b>			
MCL vs comparators	1.99 (1.71, 2.31)	4.30 (3.39, 5.47)	6.65 (4.53, 9.77)
HD-ASCT <sup>2</sup> vs. non-HD-ASCT	0.94 (0.71, 1.25)	0.79 (0.50, 1.24)	0.72 (0.35, 1.48)
<b>Endocrine</b>			
MCL vs comparators	1.58 (0.97, 2.55)	1.17 (0.54, 2.55)	1.37 (0.46, 4.14)
HD-ASCT <sup>2</sup> vs. non-HD-ASCT	1.34 (0.52, 3.42)	0.77 (0.15, 3.86)	1.51 (0.17,13.65)
<b>CNS</b>			
MCL vs comparators	1.35 (1.11, 1.64)	1.64 (0.83, 3.23)	1.78 (0.57, 5.54)
HD-ASCT <sup>2</sup> vs. non-HD-ASCT	1.17 (0.80, 1.70)	0.62 (0.16, 2.45)	1.32 (0.14,12.50)
<b>Genitourinary</b>			
MCL vs comparators	1.27 (0.98, 1.65)	1.72 (1.18, 2.52)	1.88 (1.05, 3.36)
HD-ASCT <sup>2</sup> vs. non-HD-ASCT	0.75 (0.45, 1.24)	0.63 (0.29, 1.38)	0.53 (0.17, 1.68)
<b>Nervous</b>			
MCL vs comparators	1.08 (0.73, 1.59)	1.44 (0.87, 2.41)	4.37 (1.72,11.15)
HD-ASCT <sup>2</sup> vs. non-HD-ASCT	1.20 (0.56, 2.57)	0.40 (0.14, 1.19)	0.08 (0.01, 0.42)
<b>Injuries</b>			
MCL vs comparators	1.01 (0.80, 1.26)	1.02 (0.71, 1.45)	0.91 (0.52, 1.59)
HD-ASCT <sup>2</sup> vs. non-HD-ASCT	1.24 (0.80, 1.93)	0.65 (0.32, 1.33)	0.69 (0.23, 2.05)
<b>Musculoskeletal</b>			
MCL vs comparators	0.81 (0.65, 1.02)	0.82 (0.57, 1.17)	0.71 (0.42, 1.18)
HD-ASCT <sup>2</sup> vs. non-HD-ASCT	0.89 (0.57, 1.38)	0.91 (0.44, 1.88)	0.77 (0.28, 2.12)
<b>Circulatory disorders</b>			
MCL vs comparators	0.91 (0.71, 1.16)	0.87 (0.65, 1.17)	0.83 (0.57, 1.22)
HD-ASCT <sup>2</sup> vs. non-HD-ASCT	0.81 (0.50, 1.32)	1.24 (0.70, 2.21)	1.38 (0.66, 2.88)
<b>Mental</b>			
MCL vs comparators	0.79 (0.43, 1.45)	1.12 (0.50, 2.51)	1.49 (0.38, 5.87)
HD-ASCT <sup>2</sup> vs. non-HD-ASCT	0.42 (0.13, 1.32)	0.77 (0.17, 3.51)	0.08 (0.01, 0.76)

Abbreviations: MCL, mantle cell lymphoma; HD-ASCT, high dose chemotherapy with autologous stem cell transplantation.

**sFigure2.** Percentage of mantle cell lymphoma (MCL) patients with at least one diagnosis (outpatient specialist visits or hospitalization) or a cause of death in the disease groups: Respiratory system (ICD10: J00-J99), infectious diseases (A00-B99), diseases of the blood and blood-forming organs (D50-D89), and neoplasms (C00-C80). Neoplasms also show absolute number of patients.



**sFigure 3.** Mean number of outpatient specialist visits, hospitalizations, and bed days among MCL patients (by HD-ASCT/non-HD ASCT) and comparators by time windows starting from one year after diagnosis.



*Abbreviations: MCL, mantle cell lymphoma; HD-ASCT, high dose chemotherapy with autologous stem cell transplantation.*

**sFigure 4.** Crude cumulative probabilities of death due to hematological malignancies, other malignancies, cardiovascular disease (CVD), and other causes among matched comparators. Note that these results cannot be generalized to the general population as a whole as the comparators are selected to match the distribution of age and sex among the patients.

