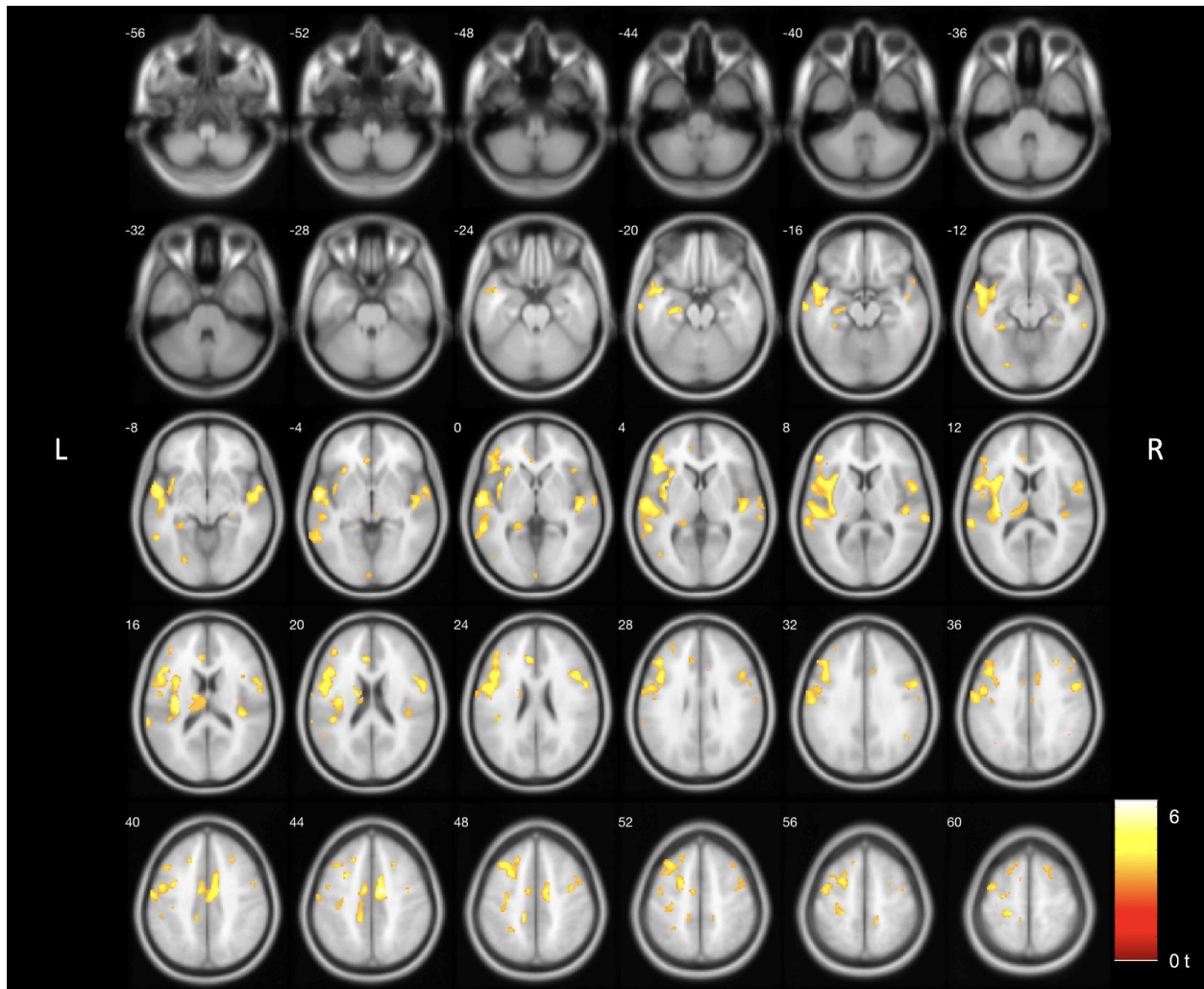
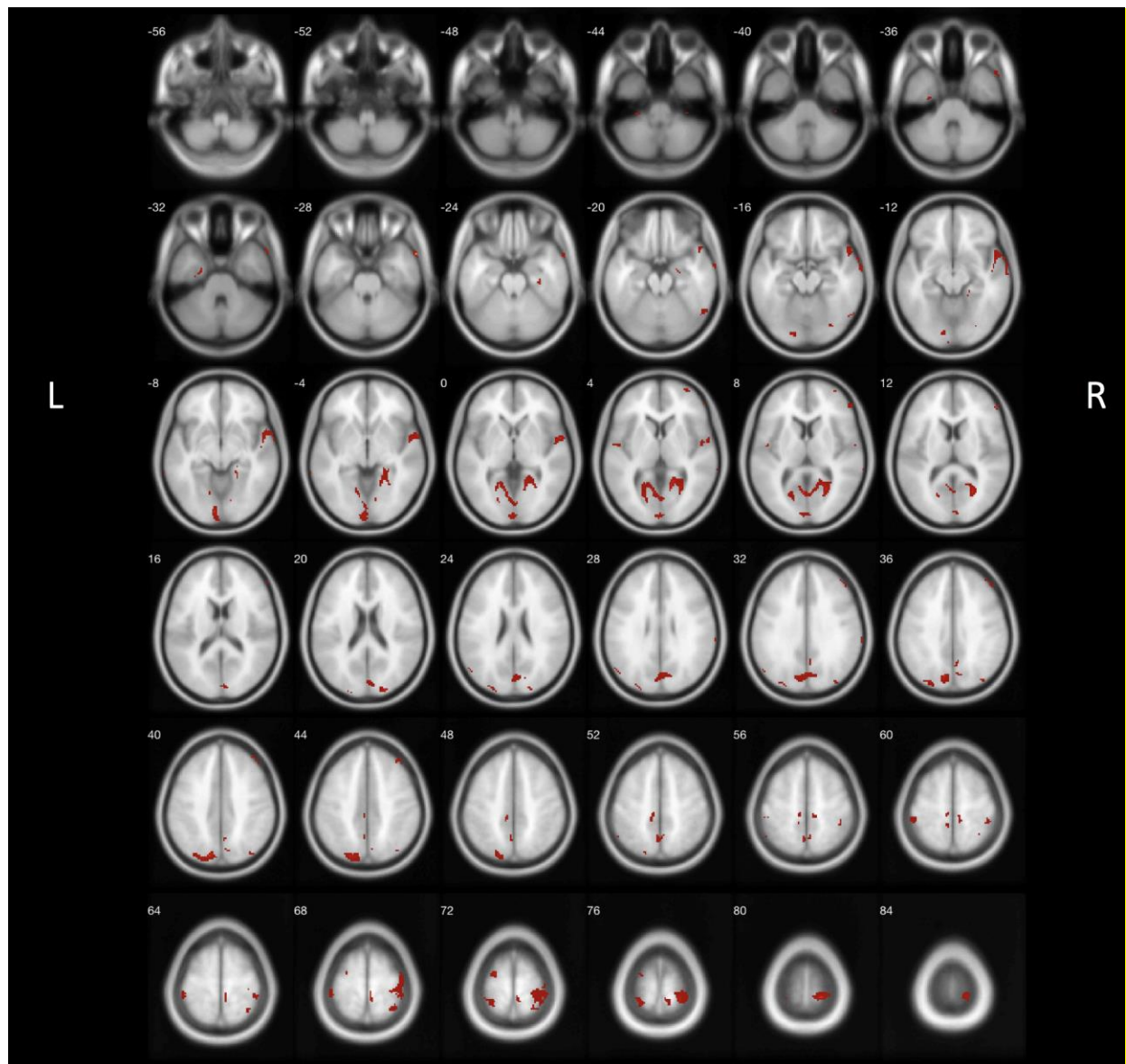


Supplemental figures:



Supplemental Figure 1. Clusters of reduced cholinergic binding in Dementia with Lewy bodies with education in years included as a covariate.



Supplemental Figure 2. Exploratory voxel-based regression analysis of FEOBV PET with MMSE as outcome parameter show clusters in the following regions: bilateral lateral geniculate nucleus, bilateral lingual gyri/optic radiation, left medial occipital, left superior posterior parietal, right superior parietal, right posterior frontal, and right superior temporal cortices and the right hippocampus (uncorrected $P < 0.05$). No clusters meeting this criterion were found for a similar PET-MMSE regression analysis in the normal control group.