

Fig. S1. A) Localisation of GFP-CCDC86^{wt}, GFP-CCDC86^{Δ121} and GFP-CCDC86^{Δ197} in interphase (first row), prometaphase/metaphase (second row) and in anaphase/telophase (third and fourth rows). Scale bar 5 μm.

B) Localisation of the nucleolin foci in cells treated with control or CCDC86 siRNA relative to microtubules. For each cells Scale bar 5 μm.

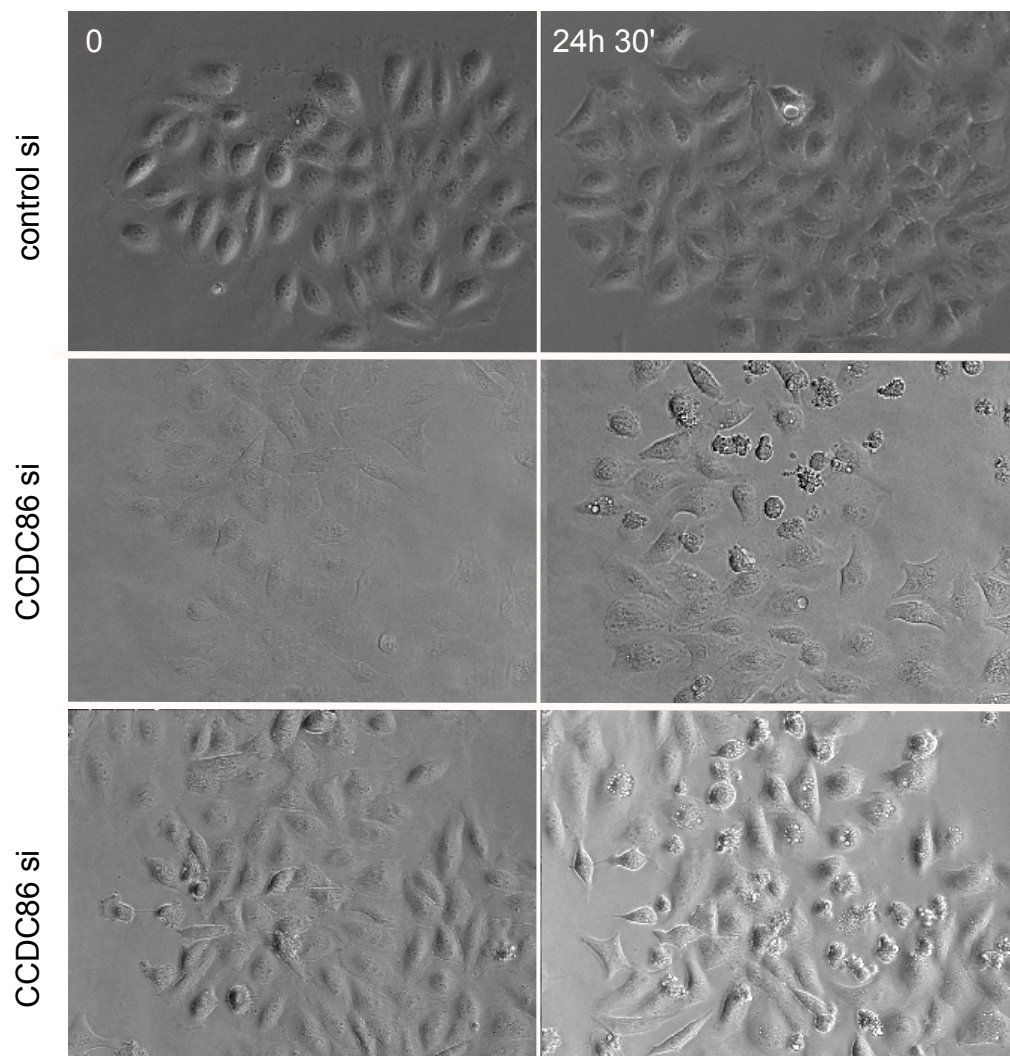


Fig. S2. HeLa cells were treated with control or CCDC86 siRNA and subjected to live cell imaging for 24.5 h. The figure shows representative images of a field of cells from both treatments at the beginning of the imaging and the same field at the end of the experiments.