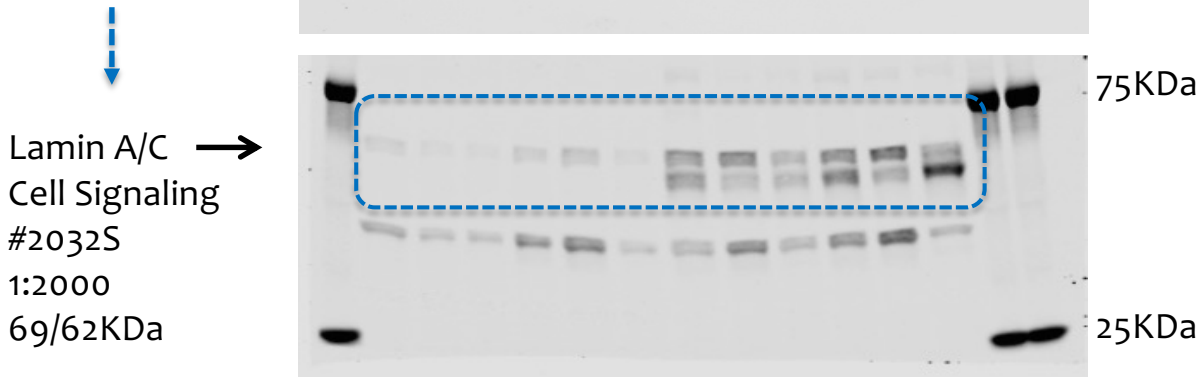
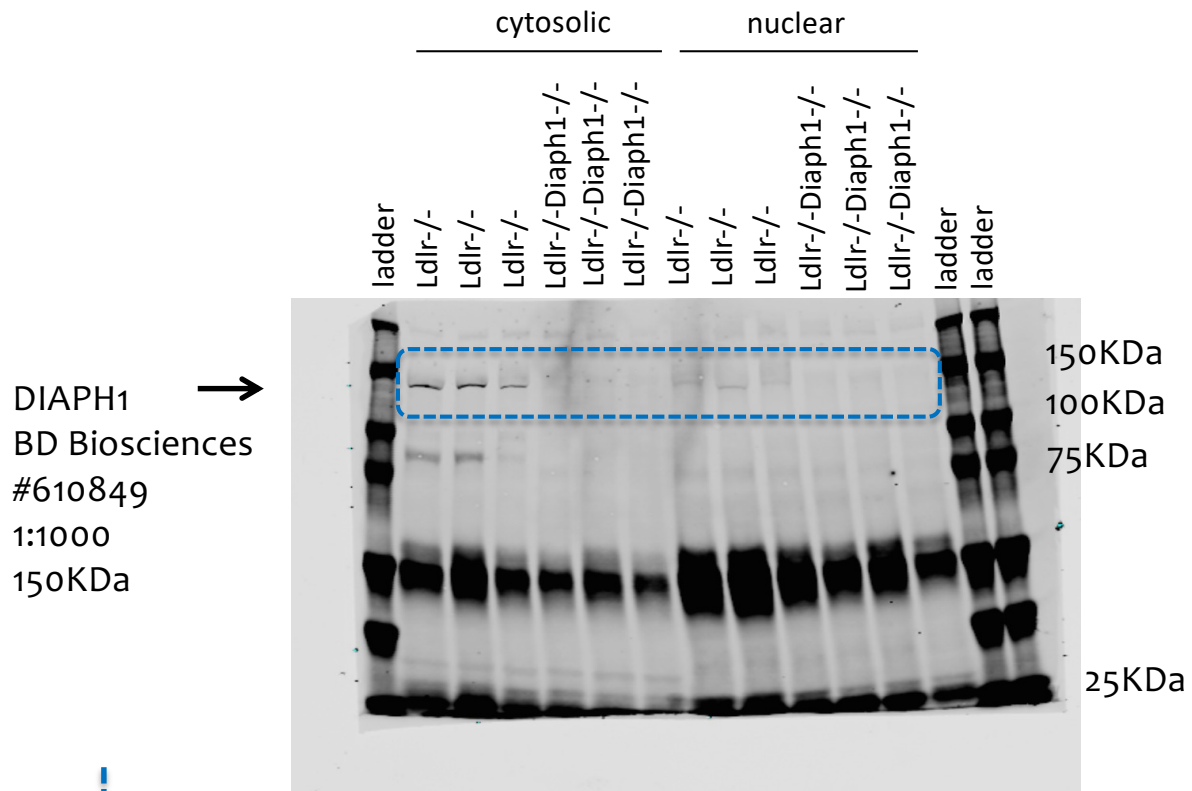


Figure 5A-B-C

Exp. Code: 062-4-FRACTIONATION in livers



stripped →

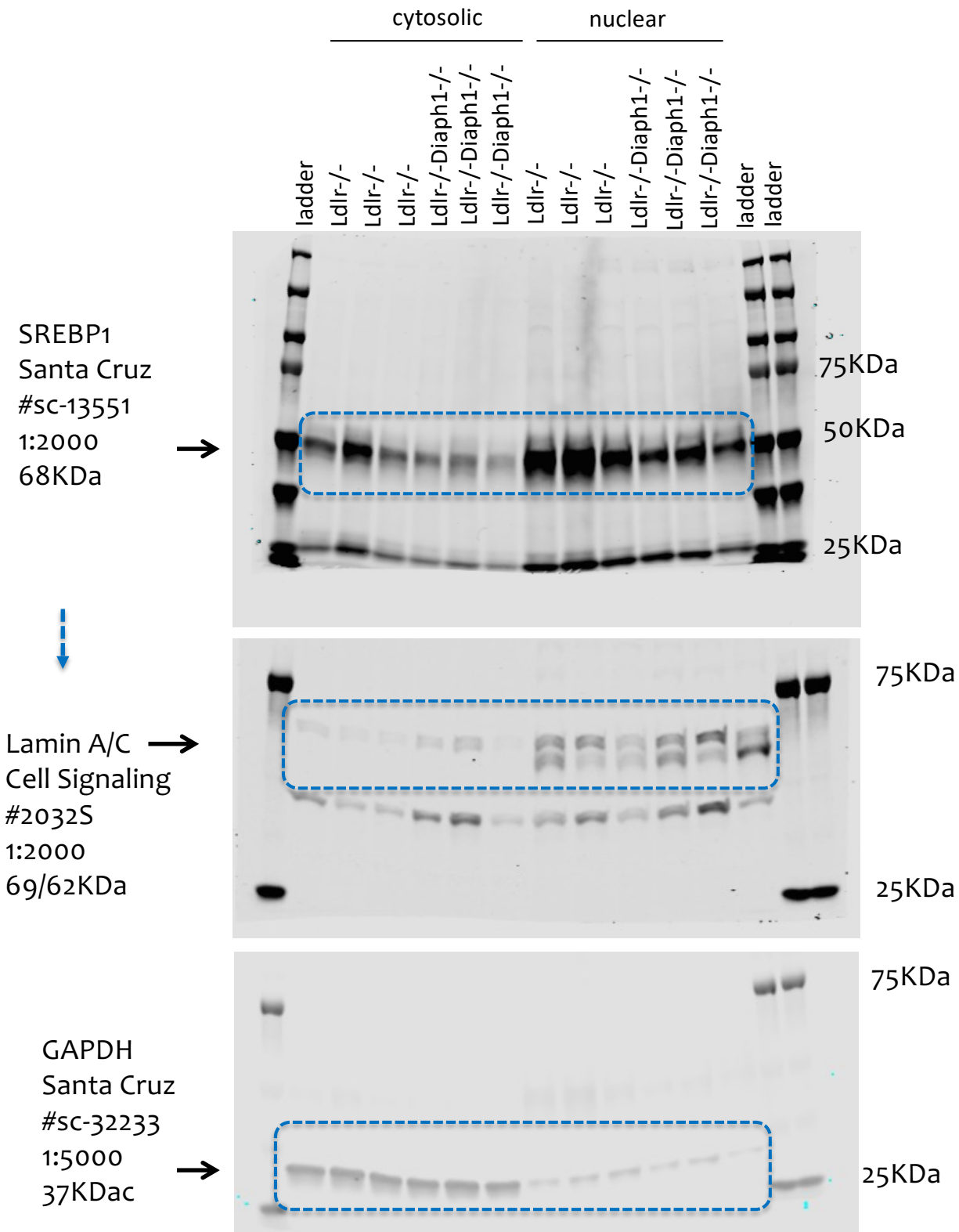
cropped for figure 5A

7.5% Acrylamide

Ldlr-/- cytosolic and nuclear n=3

Ldlr-/-Diaph1-/- cytosolic and nuclear n=3

Exp. Code: 062-1-FRACTIONATION in livers

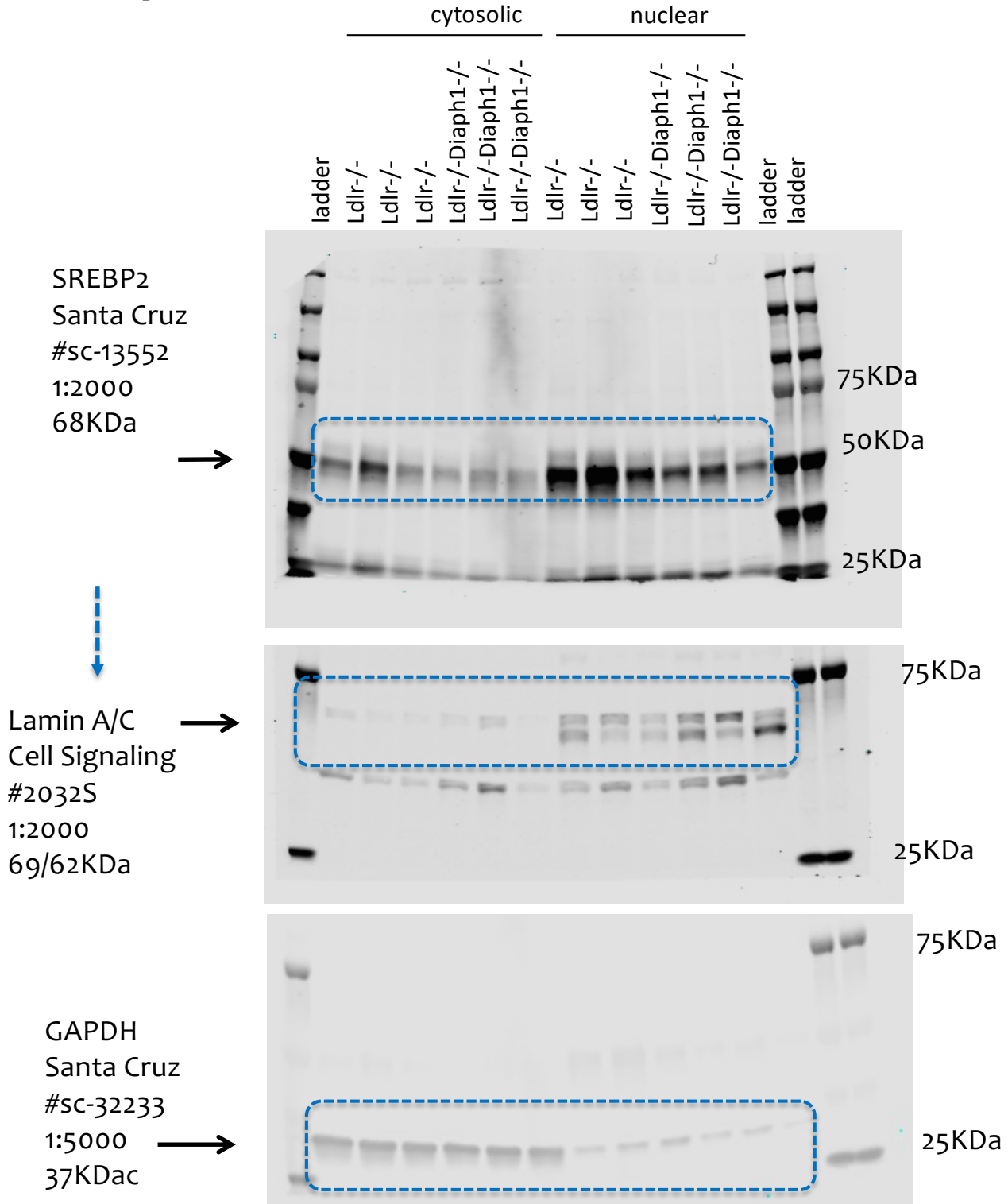


stripped →

cropped for figure 5A

7.5% Acrylamide
Ldlr-/- cytosolic and nuclear n=3
Ldlr-/-Diaph1-/- cytosolic and nuclear n=3

Exp. Code: 062-2-FRACTIONATION in livers



stripped

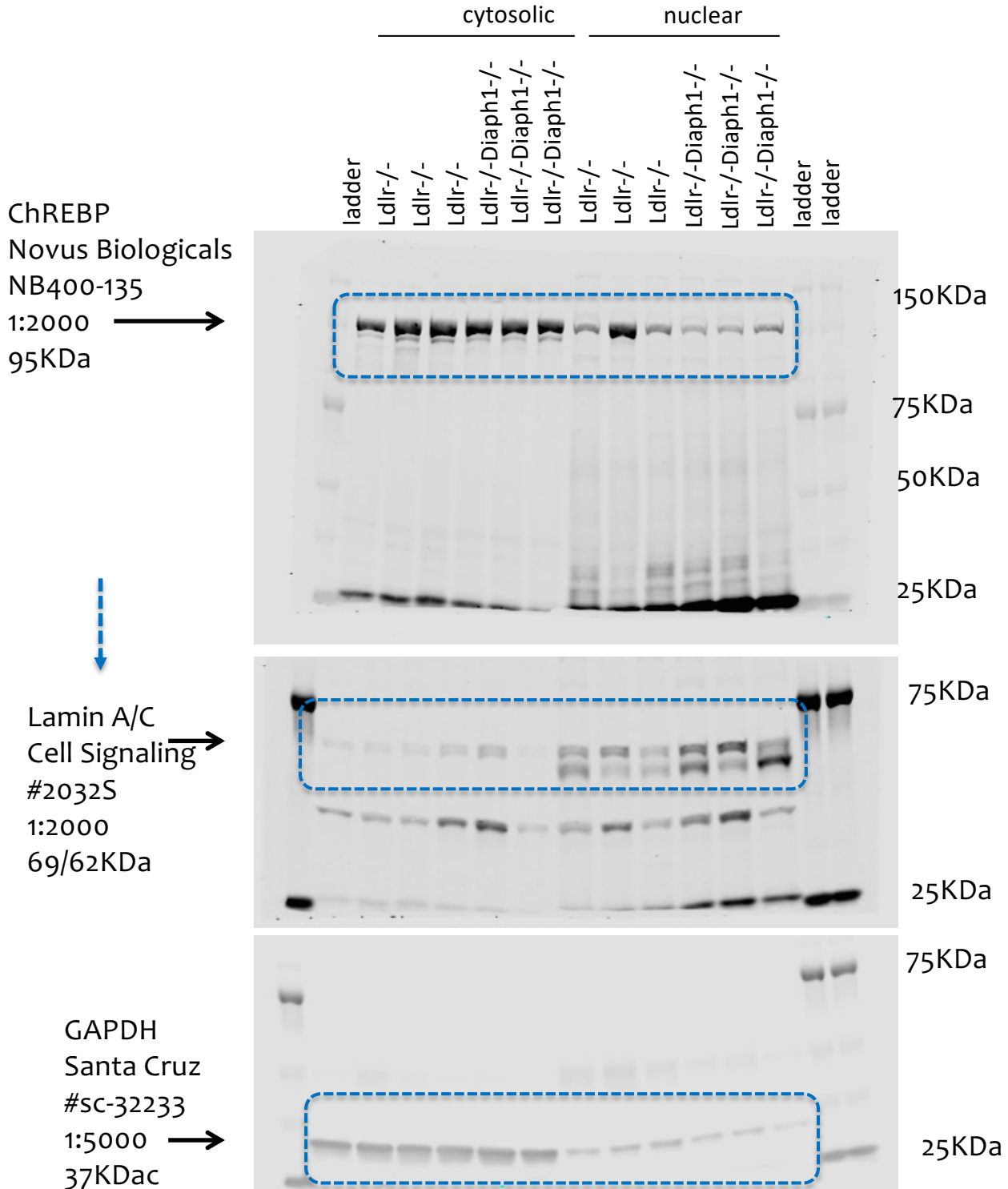
cropped for figure 5A

7.5% Acrylamide

Ldlr^{-/-} cytosolic and nuclear n=3

Ldlr^{-/-}-Diaph1^{-/-} cytosolic and nuclear n=3

Exp. Code: 062-3-FRACTIONATION in livers



stripped →

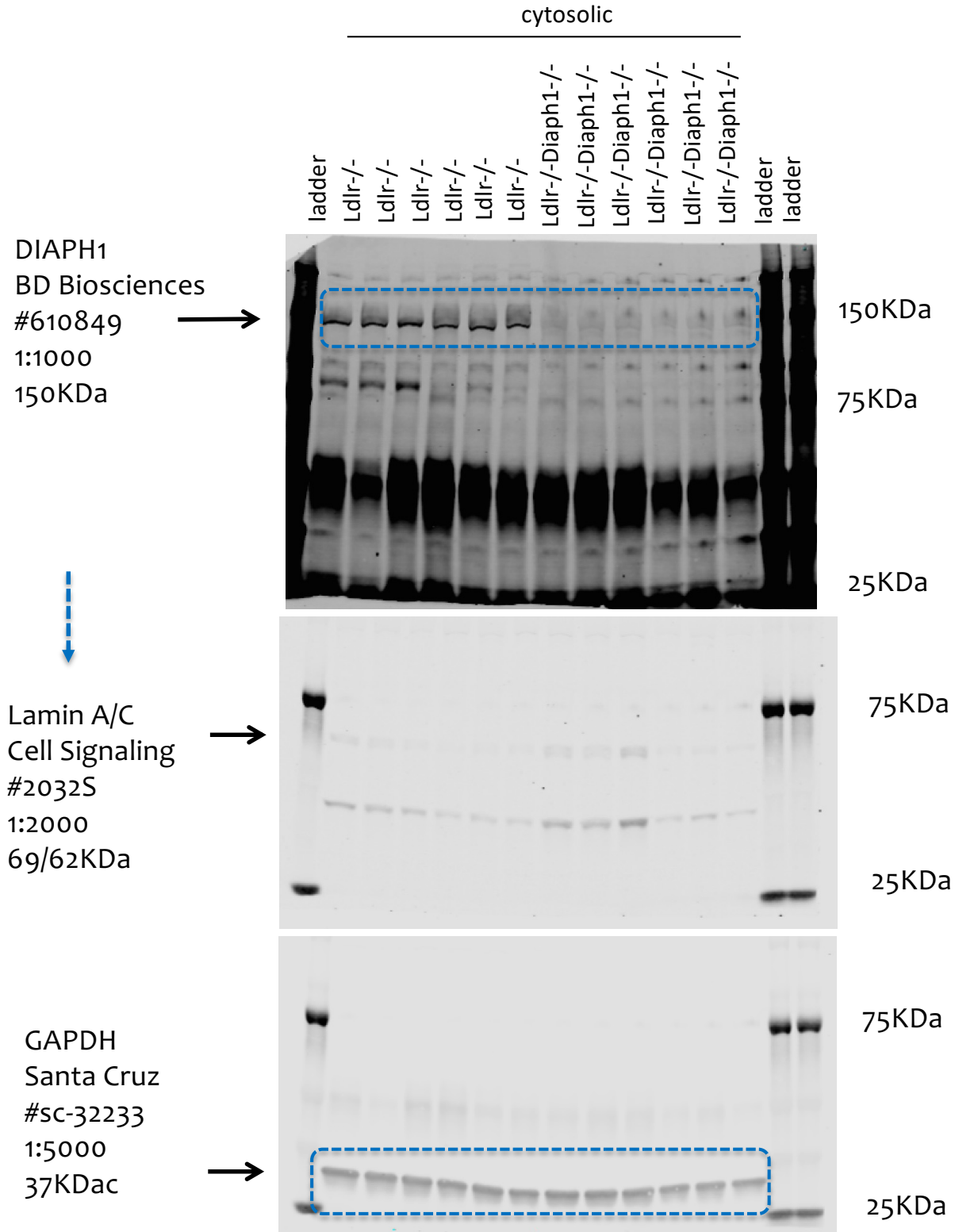
cropped for figure 5A

7.5% Acrylamide

Ldlr^{-/-} cytosolic and nuclear n=3

Ldlr^{-/-}-Diaph1^{-/-} cytosolic and nuclear n=3

Exp. Code: 061-8-FRACTIONATION in livers



stripped

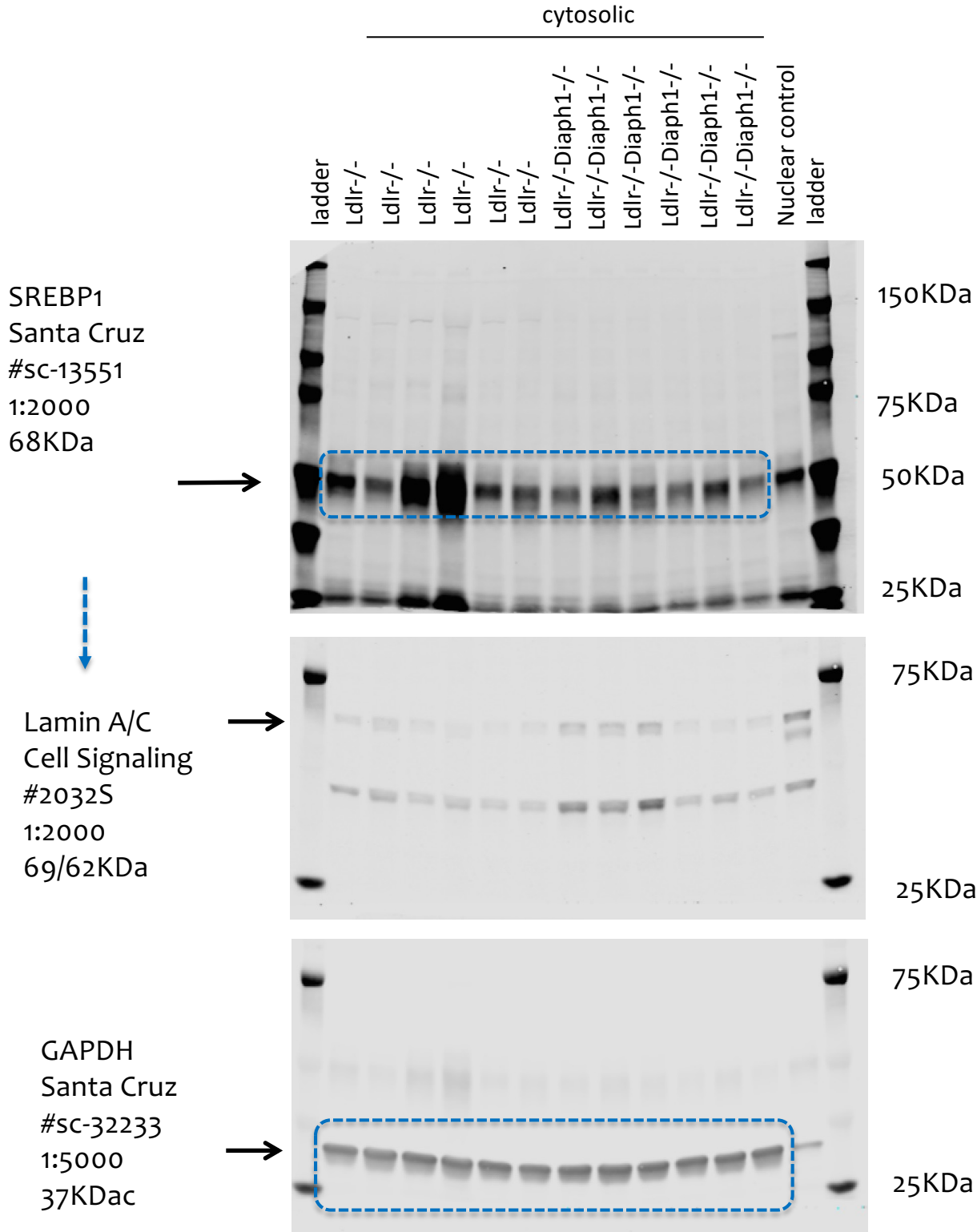
quantified in figure 5B

7.5% Acrylamide

Ldlr^{-/-} cytosolic n=6

Ldlr^{-/-}-Diaph1^{-/-} cytosolic n=6

Exp. Code: 061-5-FRACTIONATION in livers



stripped

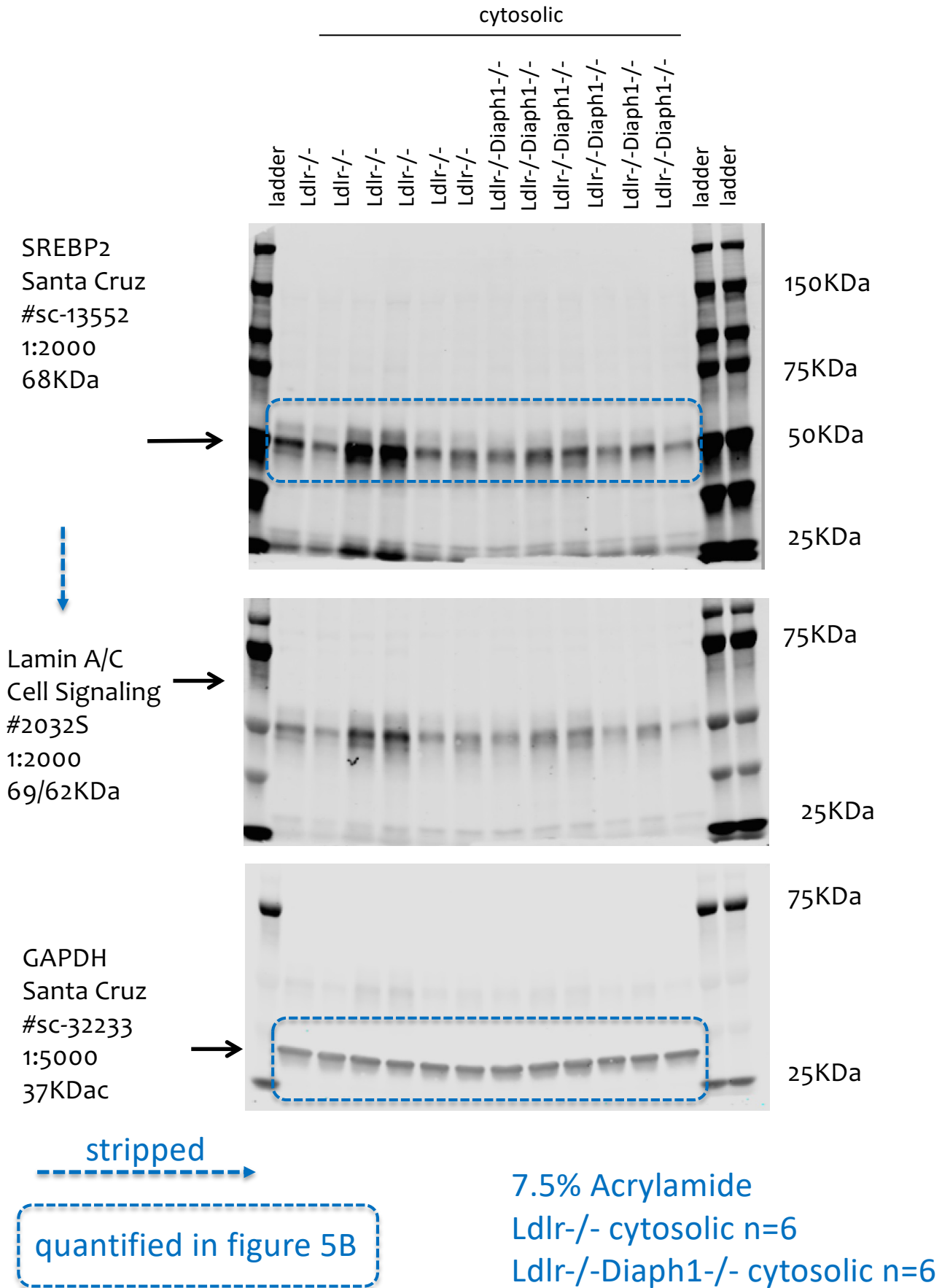
quantified in figure 5B

7.5% Acrylamide

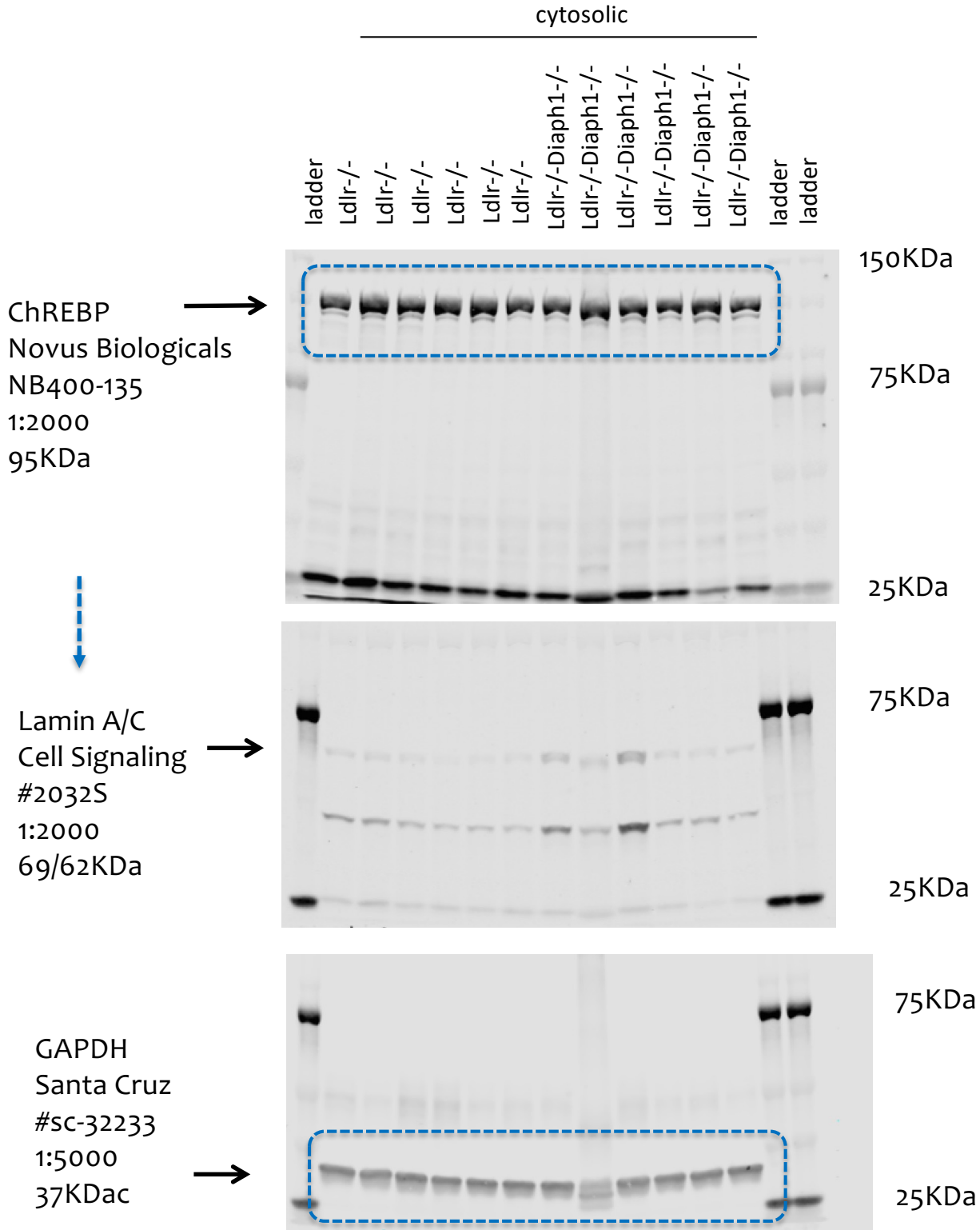
Ldlr^{-/-} cytosolic n=6

Ldlr^{-/-}-Diaph1^{-/-} cytosolic n=6

Exp. Code: 061-6-FRACTIONATION in livers



Exp. Code: 061-7-FRACTIONATION in livers



stripped

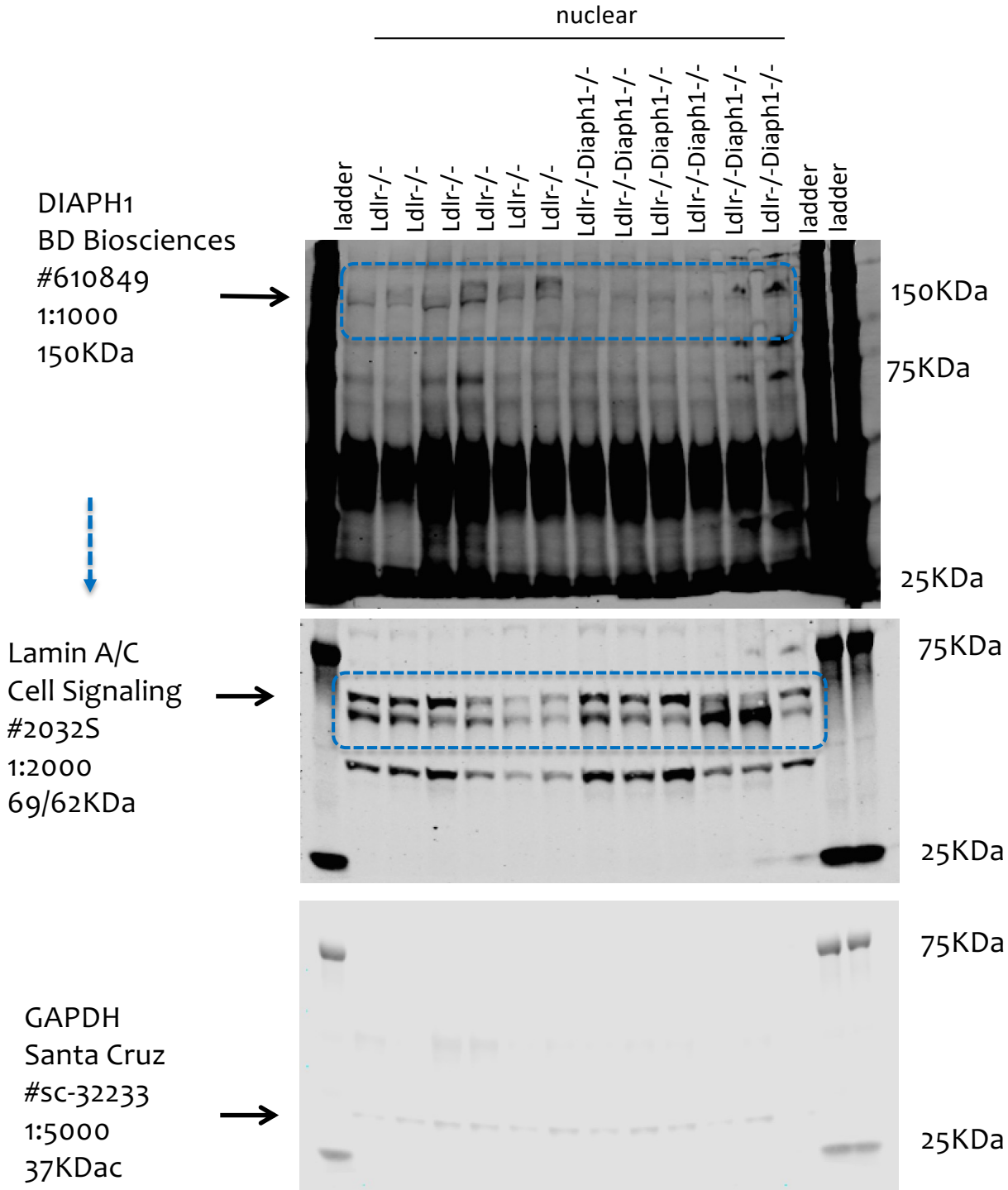
quantified in figure 5B

7.5% Acrylamide

Ldlr^{-/-} cytosolic n=6

Ldlr^{-/-}Diaph1^{-/-} cytosolic n=6

Exp. Code: 061-4-FRACTIONATION in livers



stripped

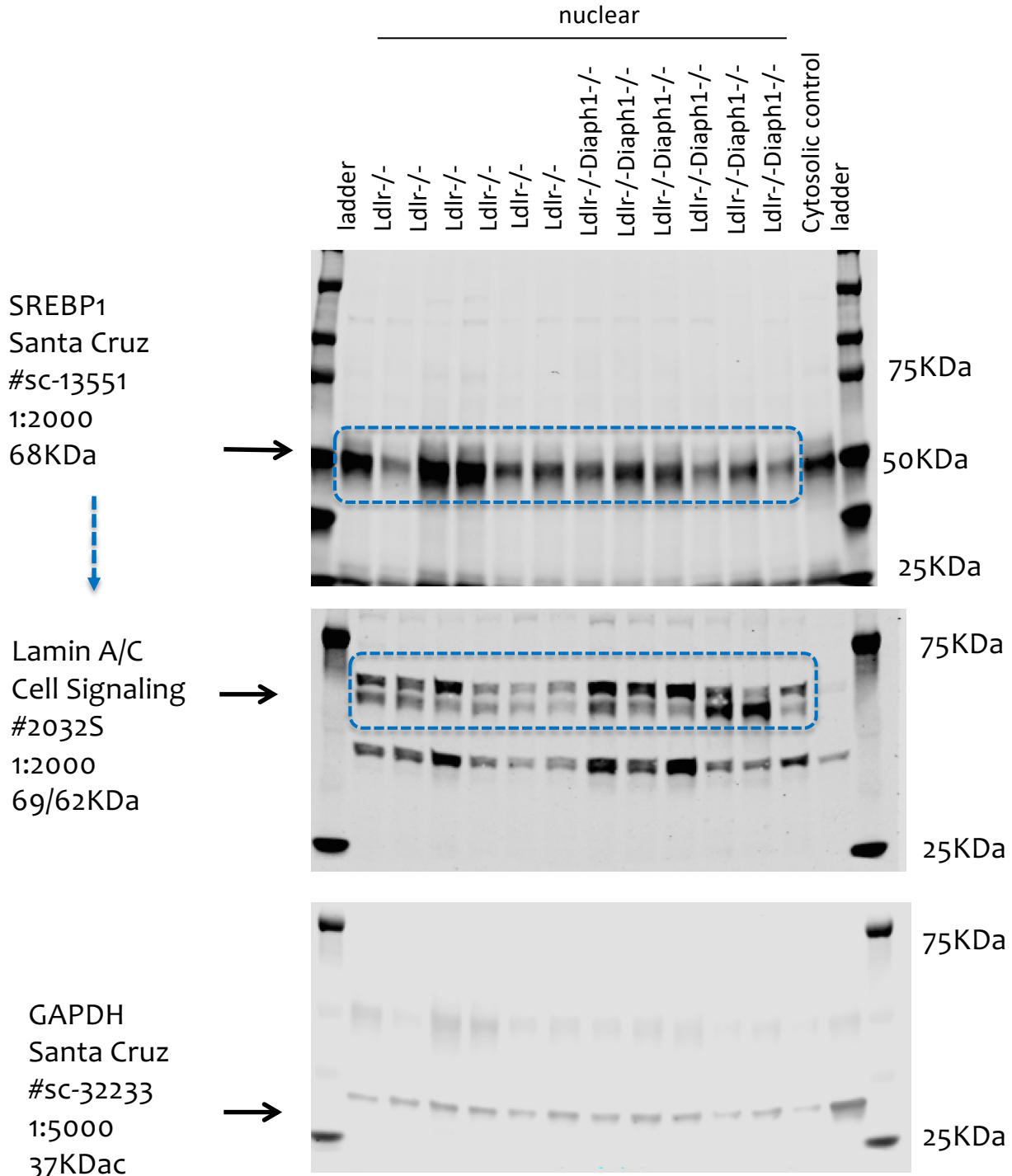
quantified in figure 5C

7.5% Acrylamide

Ldlr-/- nuclear n=6

Ldlr-/-Diaph1-/- nuclear n=6

Exp. Code: 061-1-FRACTIONATION in livers



stripped

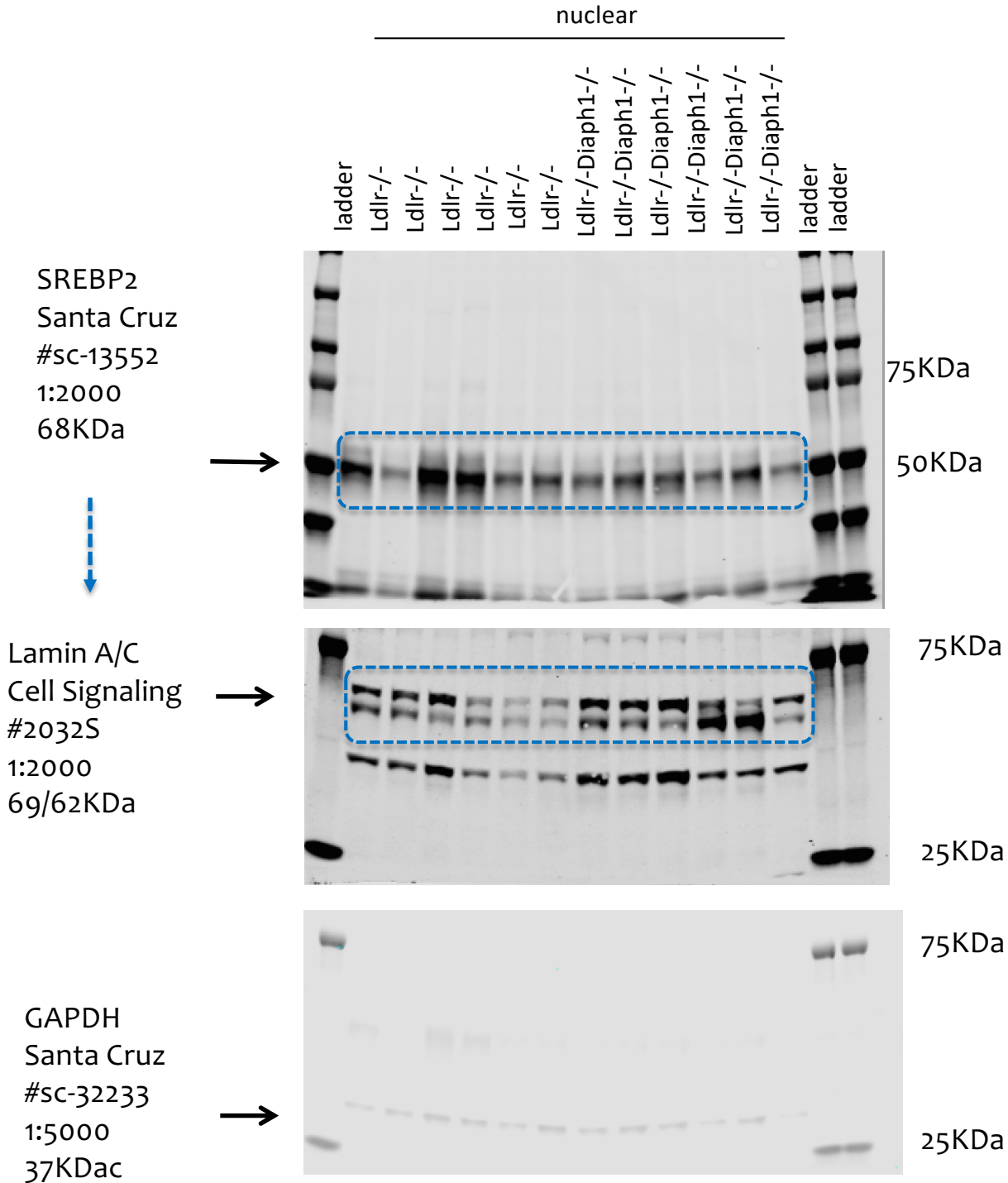
quantified in figure 5C

7.5% Acrylamide

Ldlr^{-/-} nuclear n=6

Ldlr^{-/-}Diaph1^{-/-} nuclear n=6

Exp. Code: 061-2-FRACTIONATION in livers



stripped

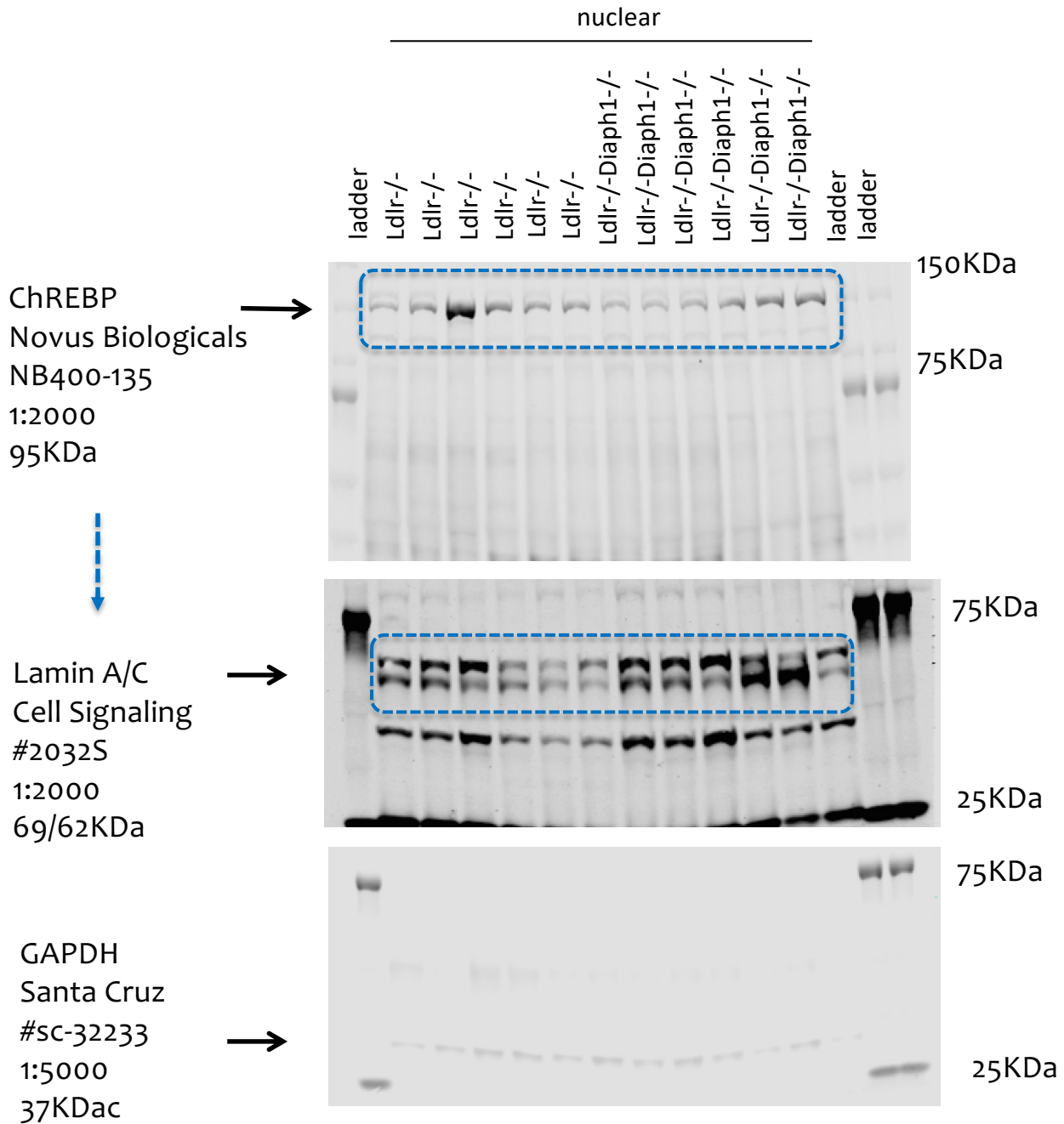
quantified in figure 5C

7.5% Acrylamide

Ldlr-/- nuclear n=6

Ldlr-/-Diaph1-/- nuclear n=6

Exp. Code: 061-3-FRACTIONATION in livers



stripped

quantified in figure 5C

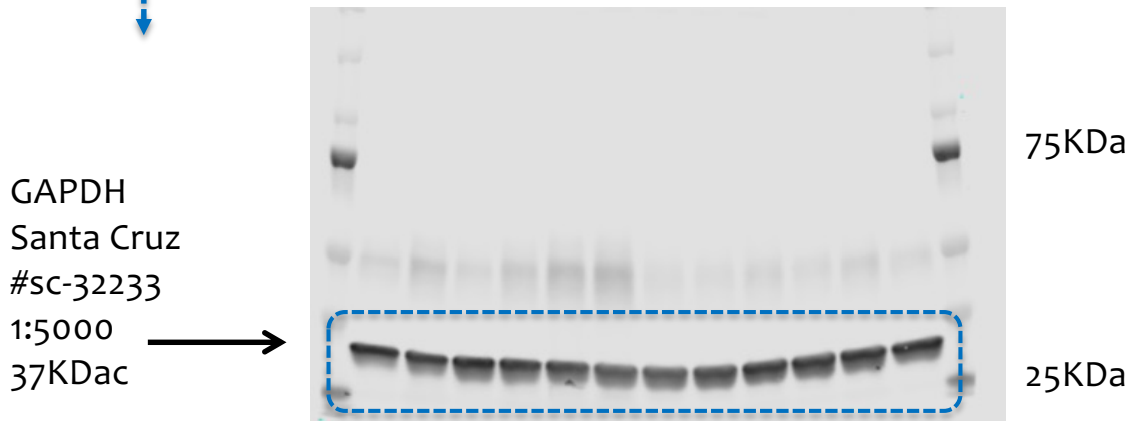
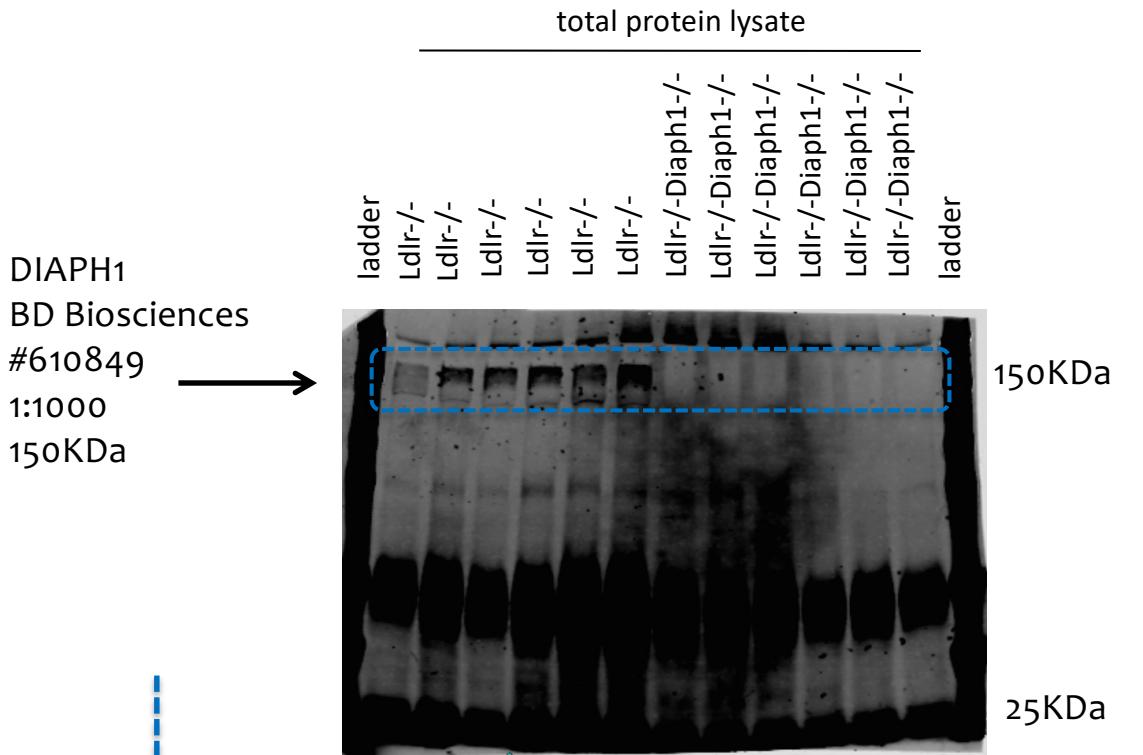
7.5% Acrylamide

Ldlr^{-/-} nuclear n=6

Ldlr^{-/-}Diaph1^{-/-} nuclear n=6

Figure 6A-B-C-D-E-F

Exp. Code: 065-1-TOTAL LYSATE in livers



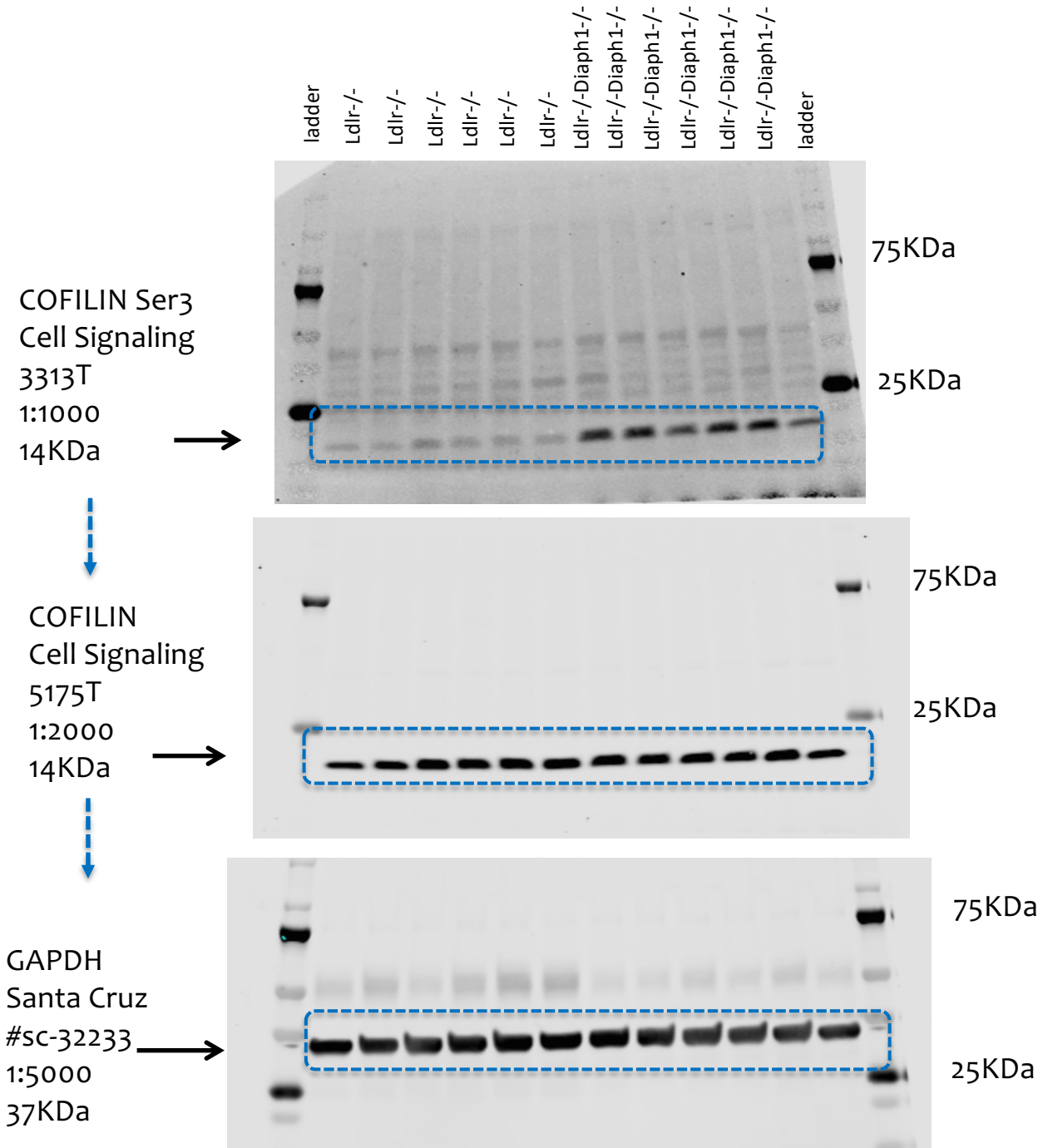
stripped

cropped for figure 6A
quantified in figure 6B

7.5% Acrylamide
Ldlr^{-/-} n=6
Ldlr^{-/-}-Diaph1^{-/-} n=6

Exp. Code: 065-14-TOTAL LYSATE in livers

total protein lysate



stripped

cropped for figure 6A
quantified in figure 6C

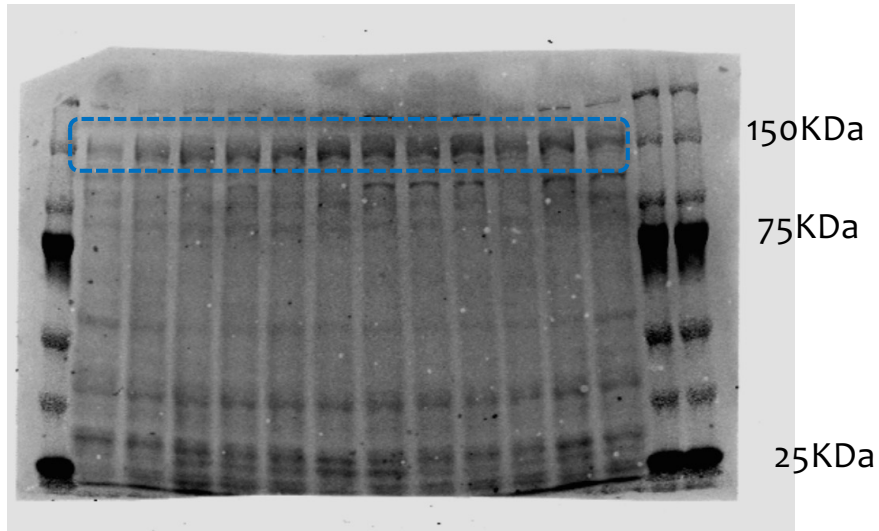
4-20% Acrylamide
Ldlr^{-/-} n=6
Ldlr^{-/-}*Diaph1*^{-/-} n=6

Exp. Code: 065-10-TOTAL LYSATE in livers

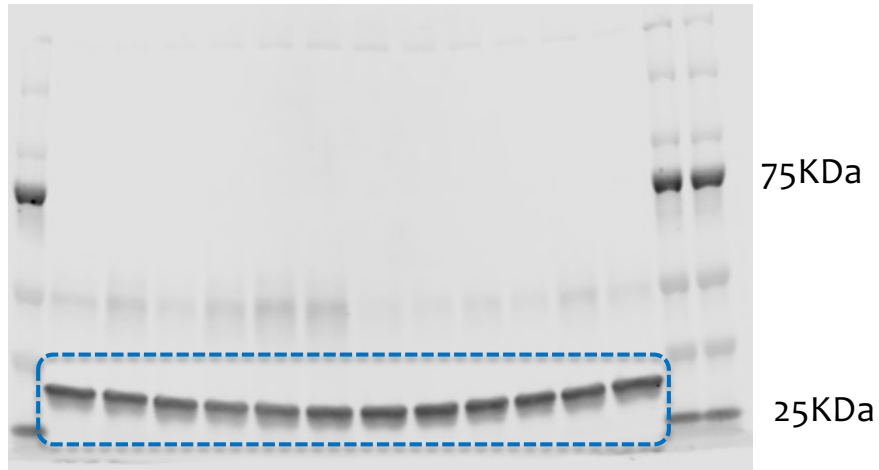
total protein lysate

ladder Ldlr-/- Ldlr-/- Ldlr-/- Ldlr-/- Ldlr-/- Ldlr-/- Ldlr-/- Ldlr-/-Diaph1-/- Ldlr-/-Diaph1-/- Ldlr-/-Diaph1-/- Ldlr-/-Diaph1-/- Ldlr-/-Diaph1-/- Ldlr-/-Diaph1-/- ladder ladder

ROCK1
Cell Signaling
4035T
1:2000
160KDa



GAPDH
Santa Cruz
#sc-32233
1:5000
37KDa



stripped



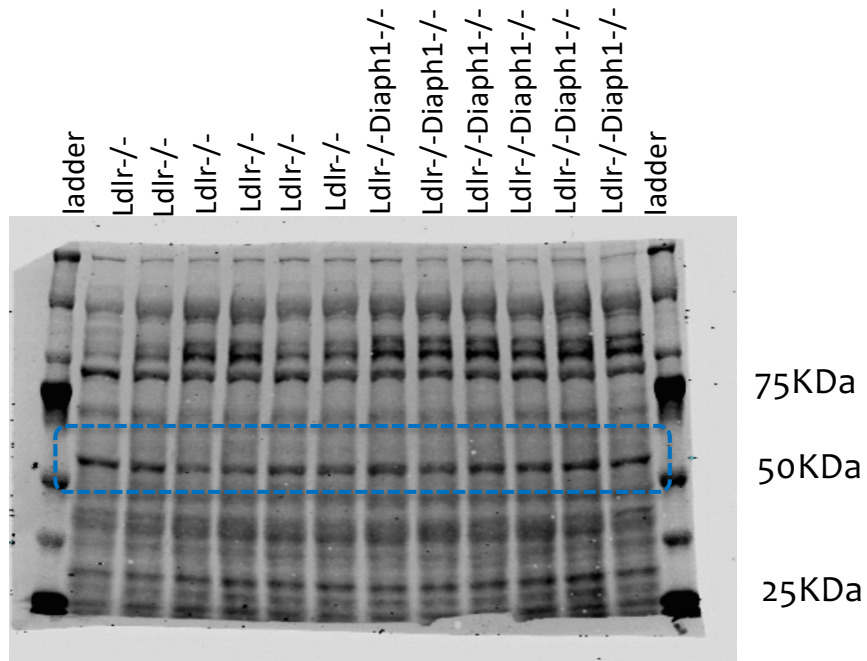
cropped for figure 6A
quantified in figure 6D

7.5% Acrylamide
Ldlr-/- n=6
Ldlr-/-Diaph1-/- n=6

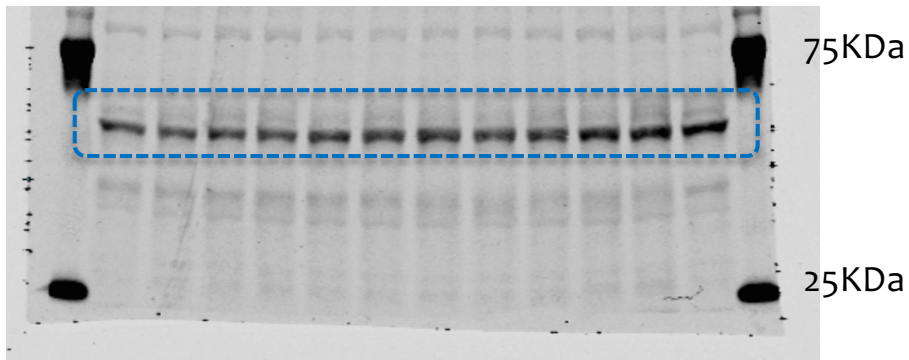
Exp. Code: 065-18-TOTAL LYSATE in livers

total protein lysate

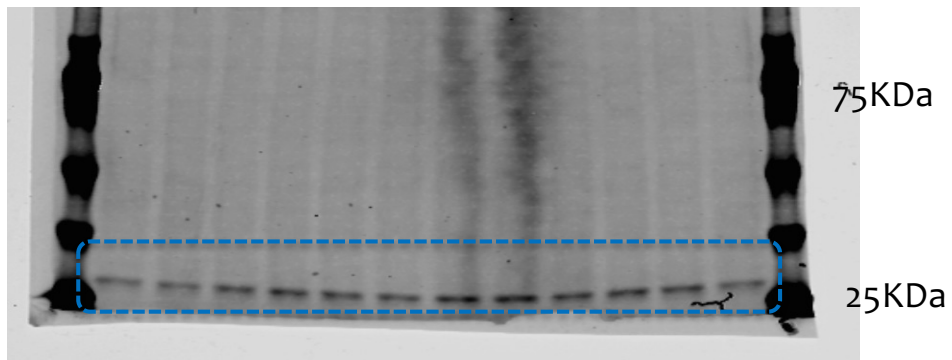
LIMK1 Thr508
Abcam
Ab194798
1:1000
72KDa →



LIMK1
Cell Signaling
3842S →
1:2000
72KDa



GAPDH
Santa Cruz
#sc-32233
1:5000 →
37KDa



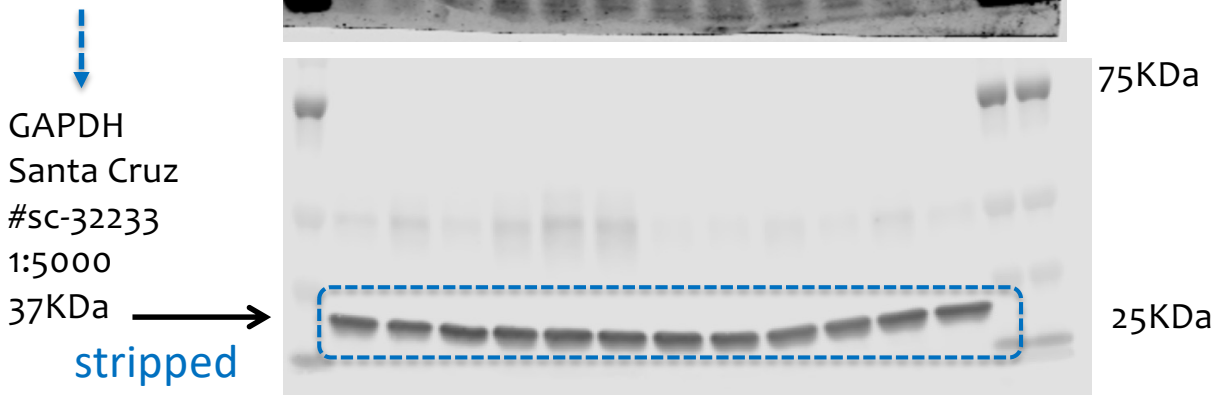
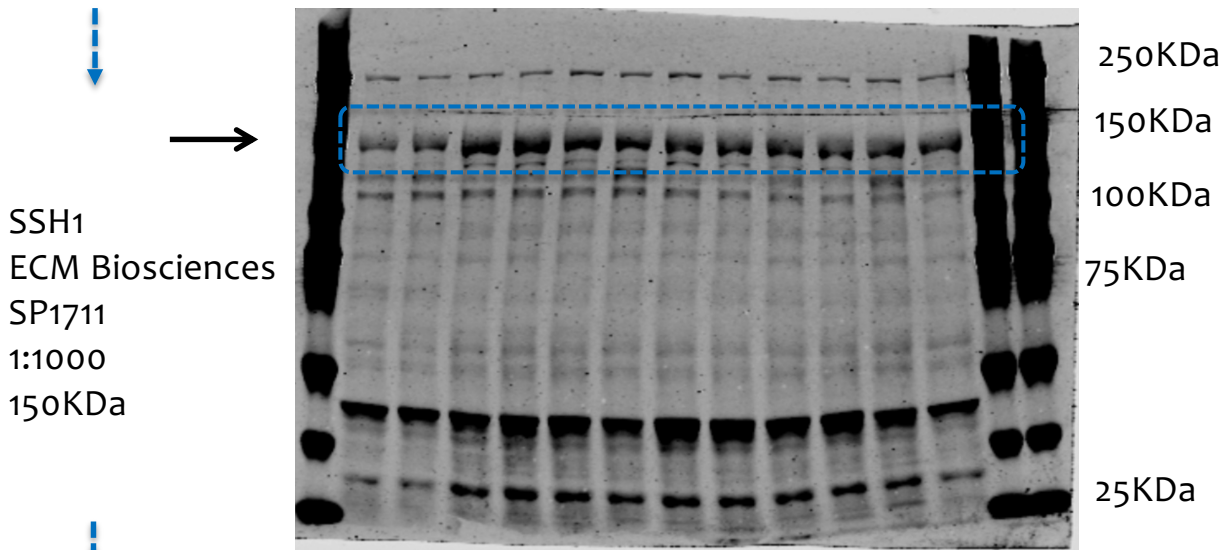
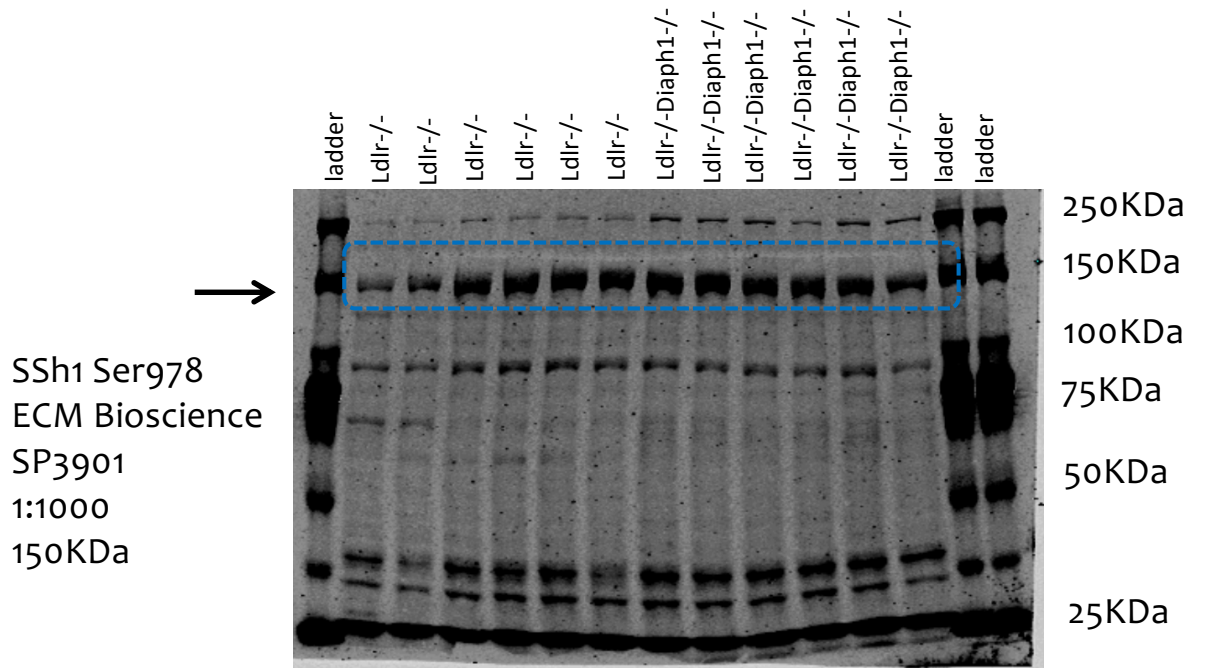
stripped →

cropped for figure 6A
quantified in figure 6E

7.5% Acrylamide
Ldlr-/- n=6
Ldlr-/-Diaph1-/- n=6

Exp. Code: 065-6 (079)-TOTAL LYSATE in livers

total protein lysate



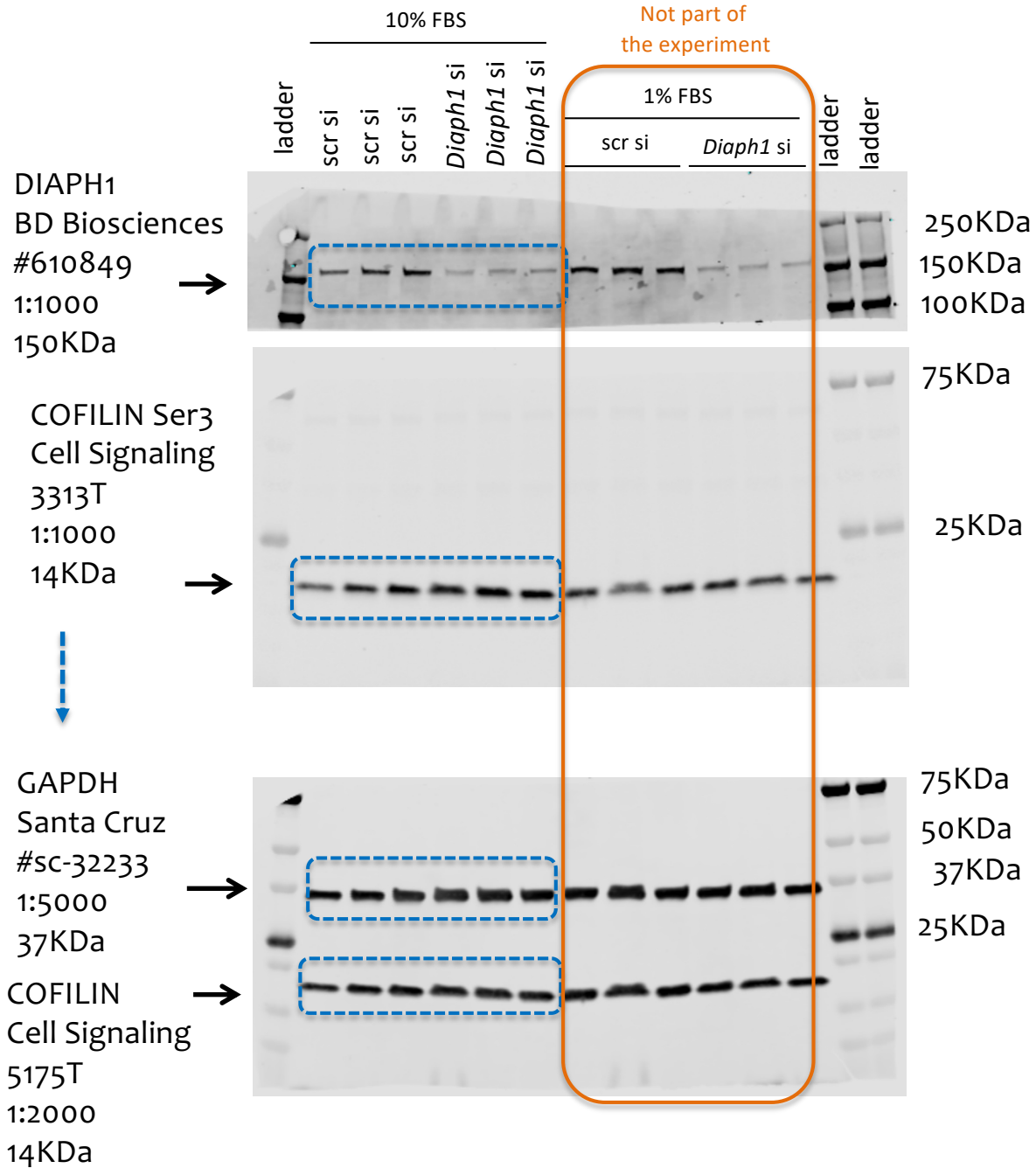
stripped

cropped for figure 6A
quantified in figure 6F

7.5% Acrylamide
Ldlr^{-/-} n=6
Ldlr^{-/-}-Diaph1^{-/-} n=6

Figure 7A-B-C-D-E-F

Exp. Code: 068-1 *Diaph1* KD in Hepa 1-6 cells

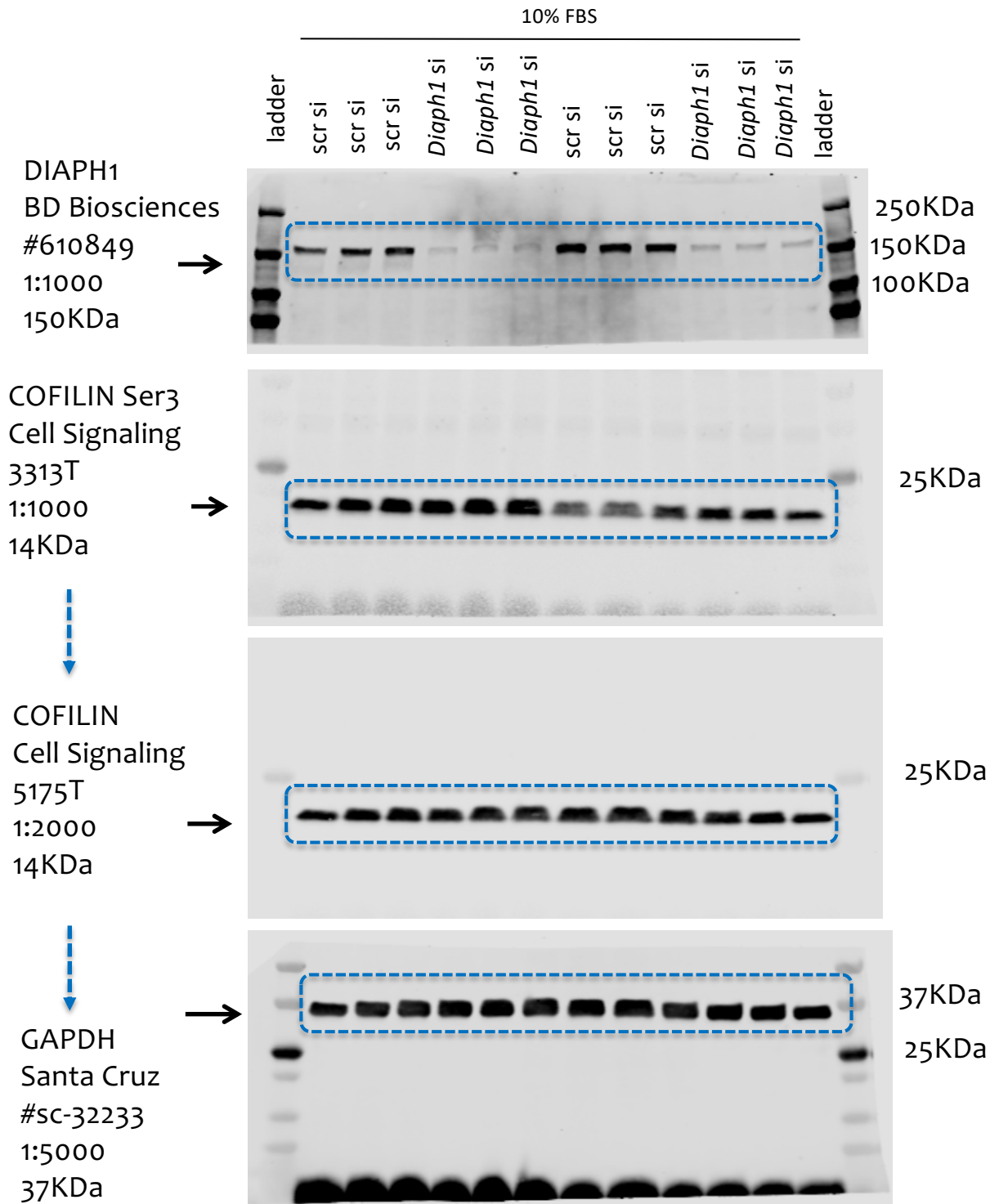


stripped

cropped for figure 7A
quantified in figure 7B, 7C

4-20% Acrylamide
Scr si n=3
Diaph1 si n=3

Exp. Code: 071-1 *Diaph1* KD in Hepa 1-6 cells



stripped

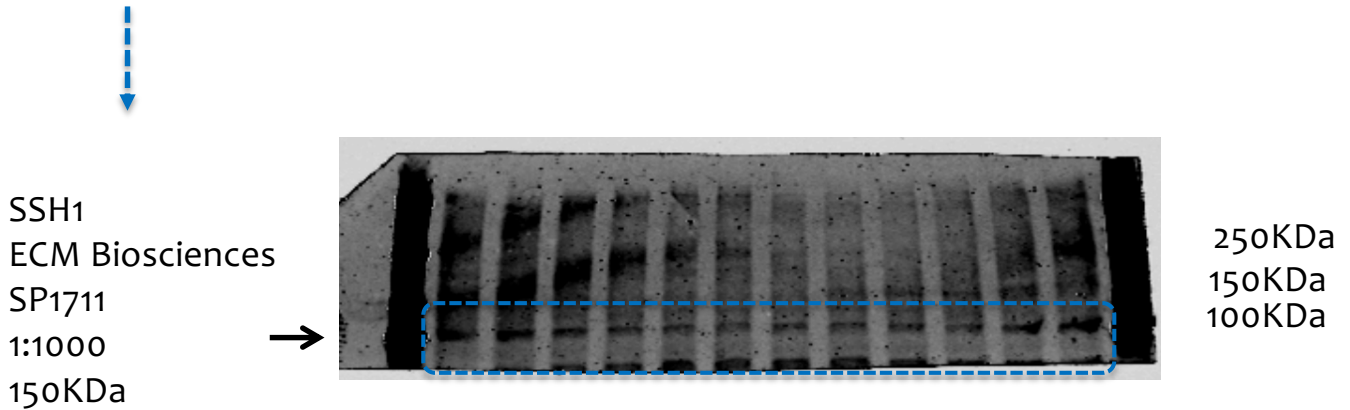
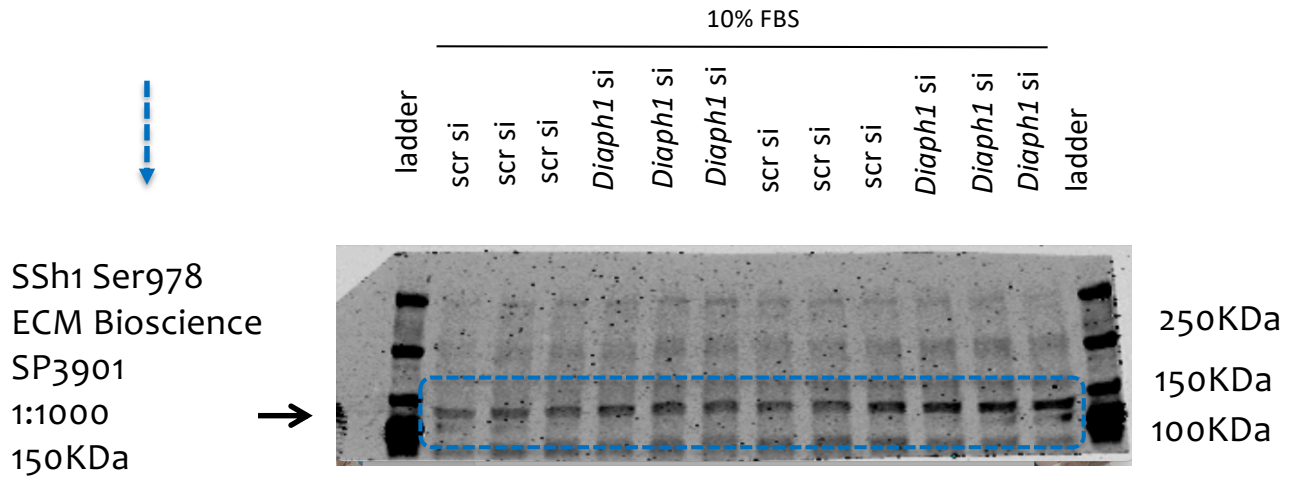
quantified in figure 7B, 7C

4-20% Acrylamide

Scr si n=6

Diaph1 si n=6

Exp. Code: 079 (071-1) Diaph1 KD in Hepa 1-6 cells

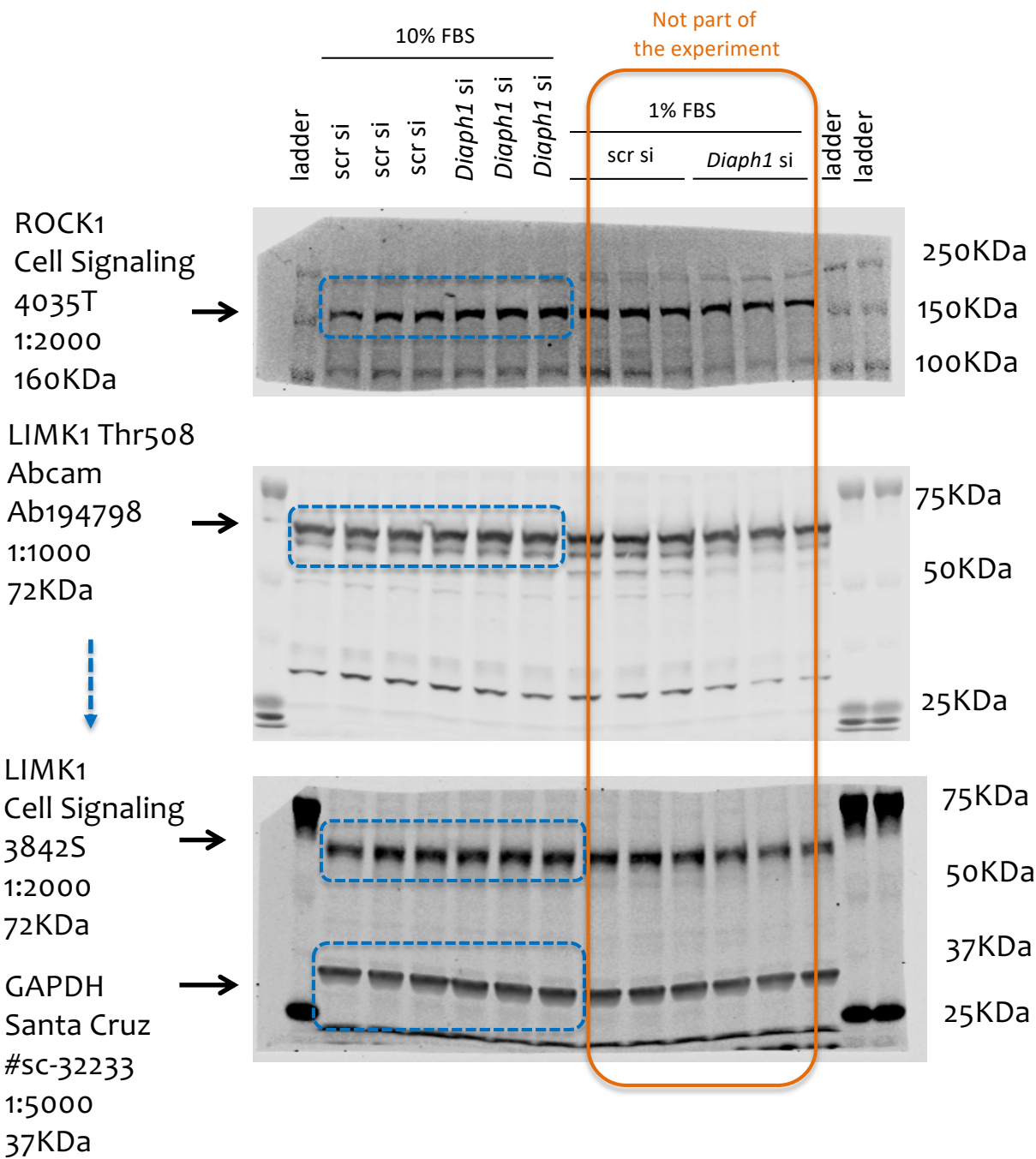


stripped

cropped for figure 7A
quantified in figure 7D

4-20% Acrylamide
Scr si n=6
Diaph1 si n=6

Exp. Code: 068-2 Diaph1 KD in Hepa 1-6 cells

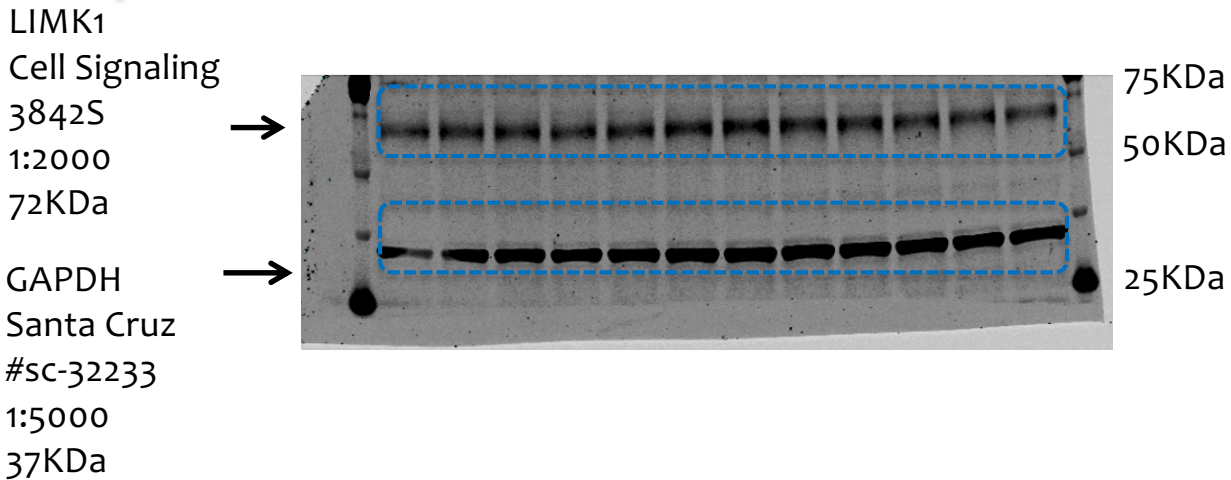
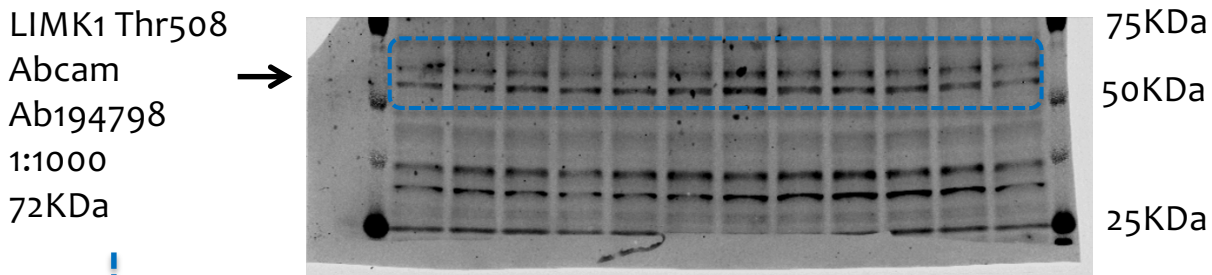
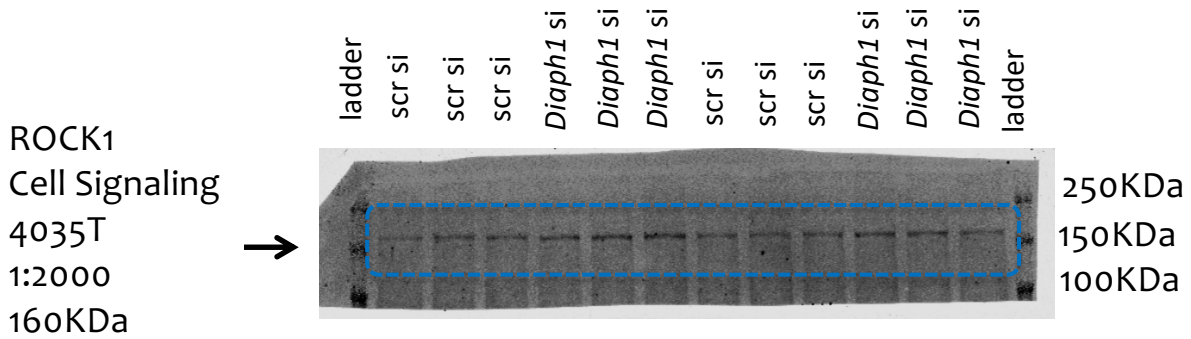


stripped
 →
 cropped for figure 7A
 quantified in figure 7E, 7F

7.5% Acrylamide
 Scr si n=3
 Diaph1 si n=3

Exp. Code: 067-2 Diaph1 KD in Hepa 1-6 cells

10% FBS



stripped

quantified in figure 7F

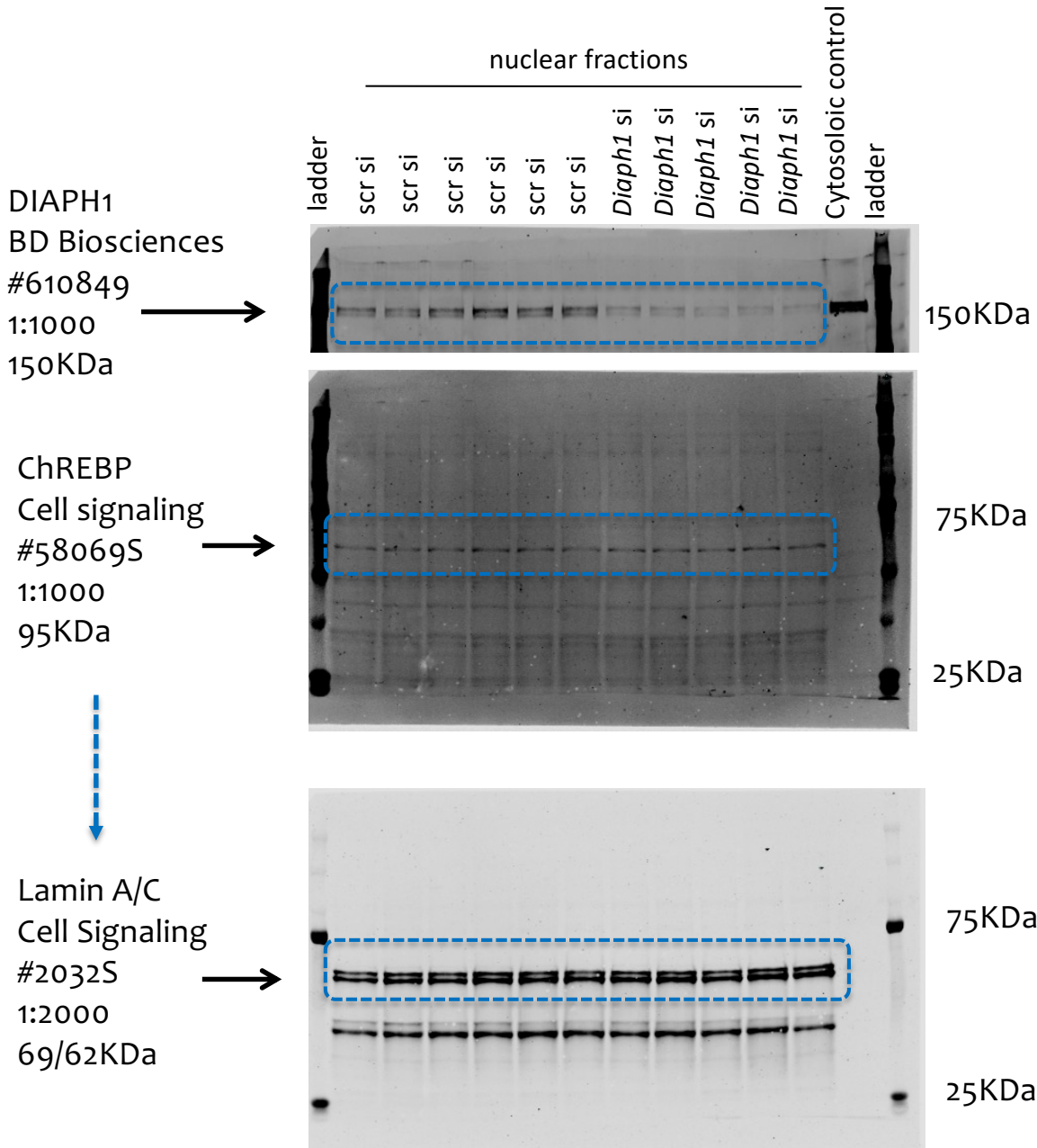
7.5% Acrylamide

Scr si n=6

Diaph1 si n=6

Figure 8A-D

Exp. Code: 086-1-FRACTIONS in HEPA 1-6

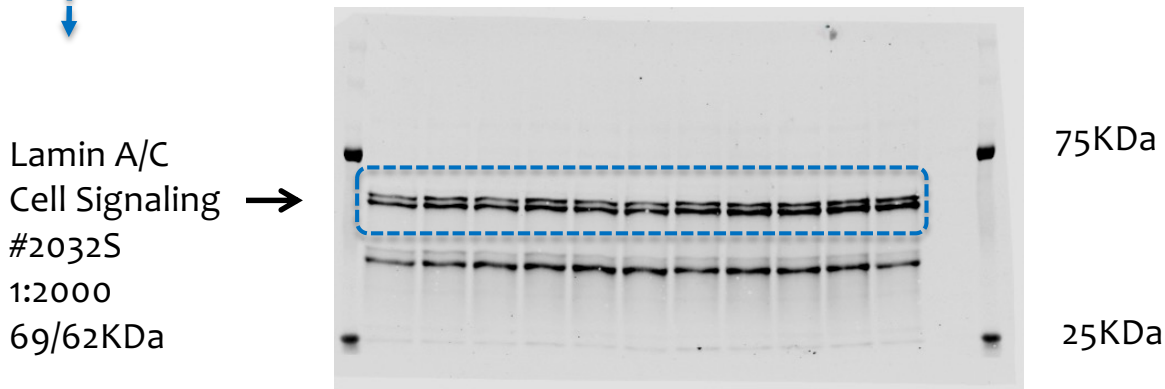
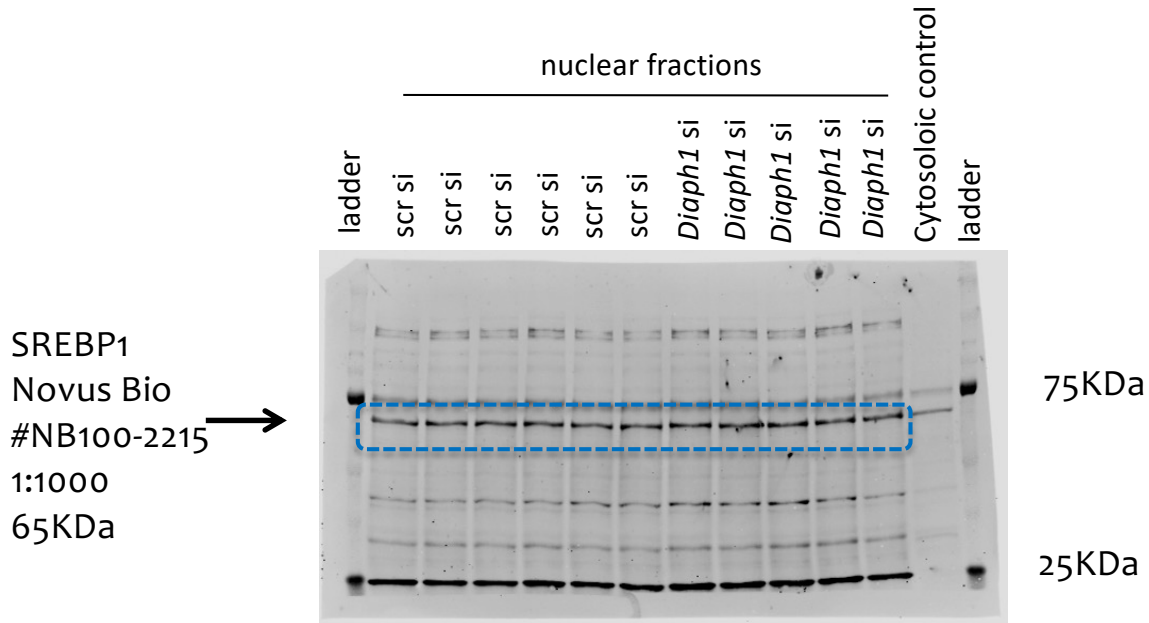


stripped

cropped for figure 8A
quantified in figure 8B

7.5% Acrylamide
Scr si nuclear n=6
Diaph1 si nuclear n=5

Exp. Code: 086-2-FRACTIONS in HEPA 1-6



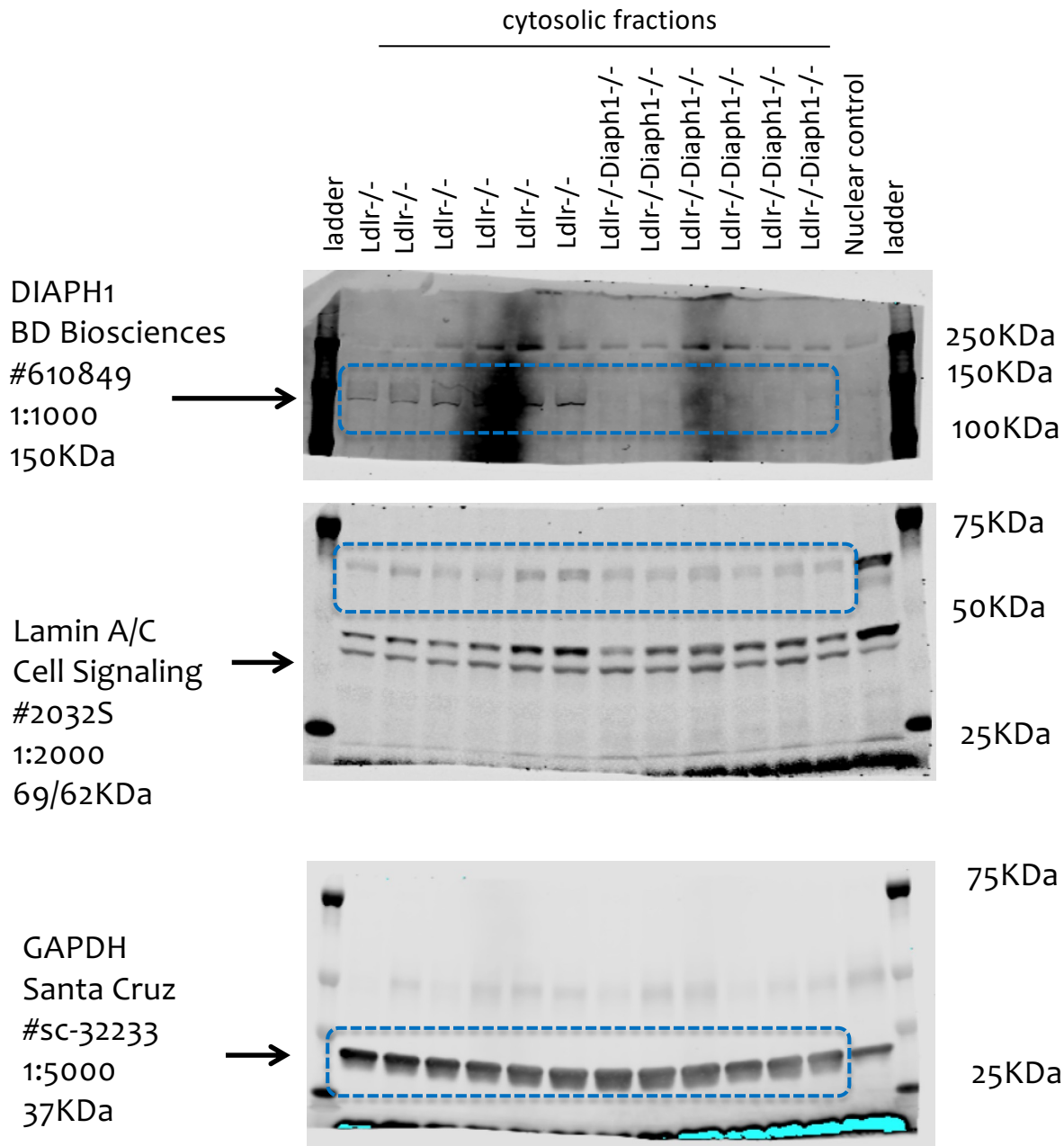
stripped

cropped for figure 8A
quantified in figure 8B

7.5% Acrylamide
Scr si nuclear n=6
Diaph1 si nuclear n=5

Supplemental Figure 7A-B-C

Exp. Code: 069-1-FRACTIONATION in livers

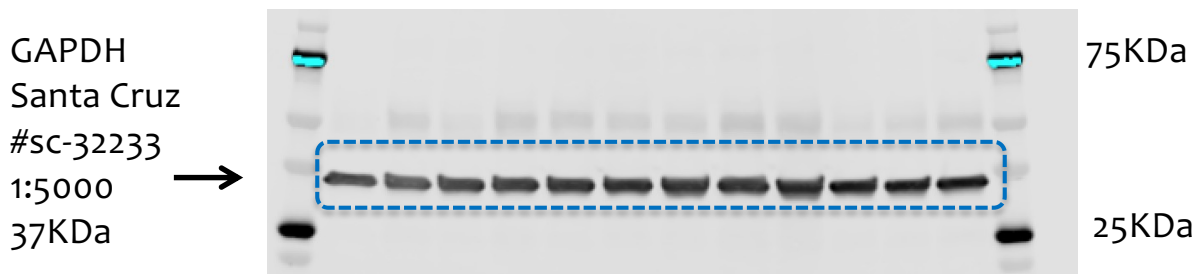
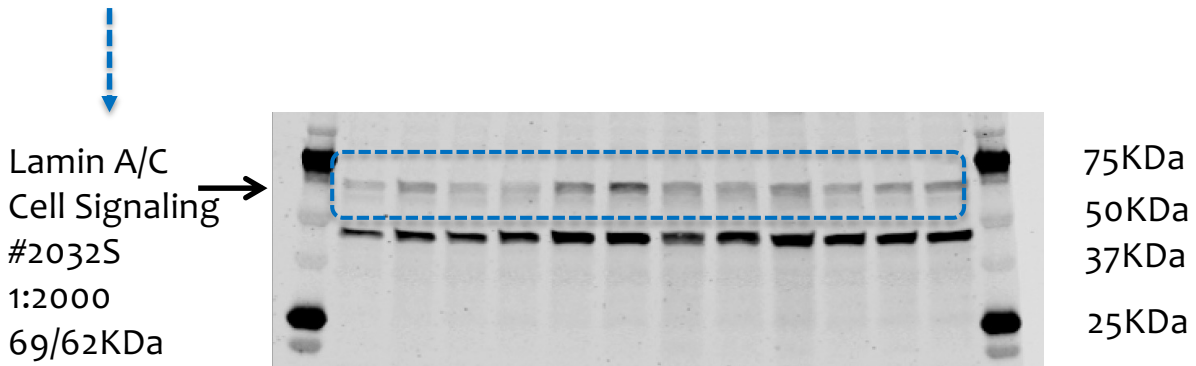
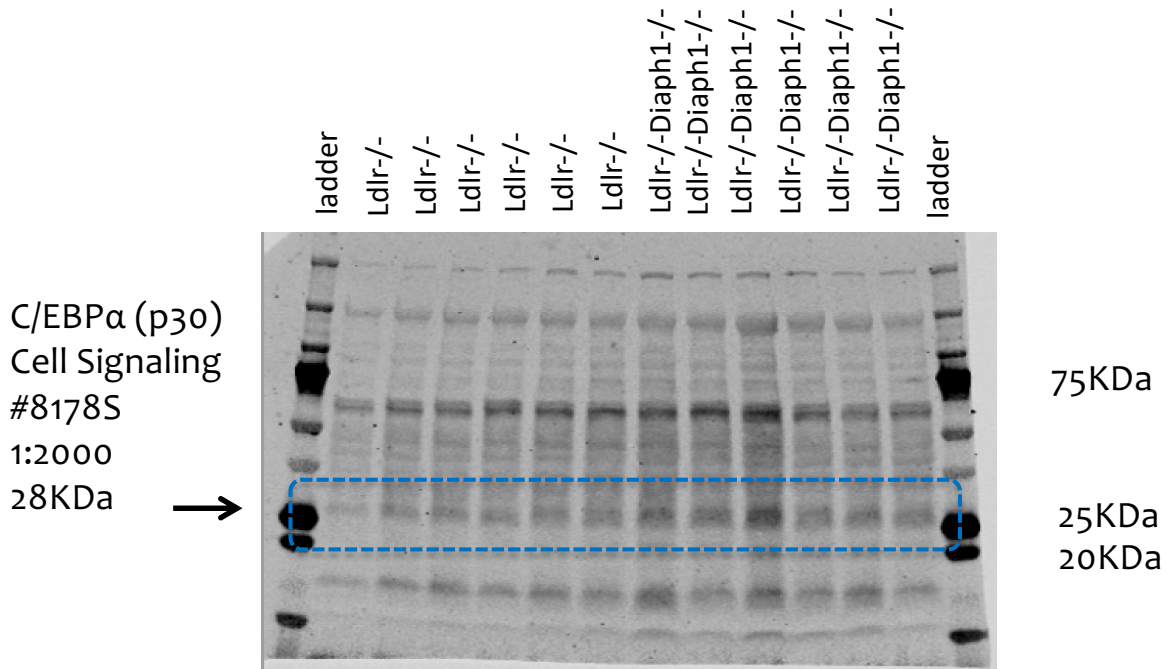


cropped for Supp figure 7A
quantified in Supp figure 7B

7.5 % Acrylamide
Ldlr^{-/-} cytosolic n=6
Ldlr^{-/-}-Diaph1^{-/-} cytosolic =6

Exp. Code: 069-5-FRACTIONATION in livers

cytosolic fractions

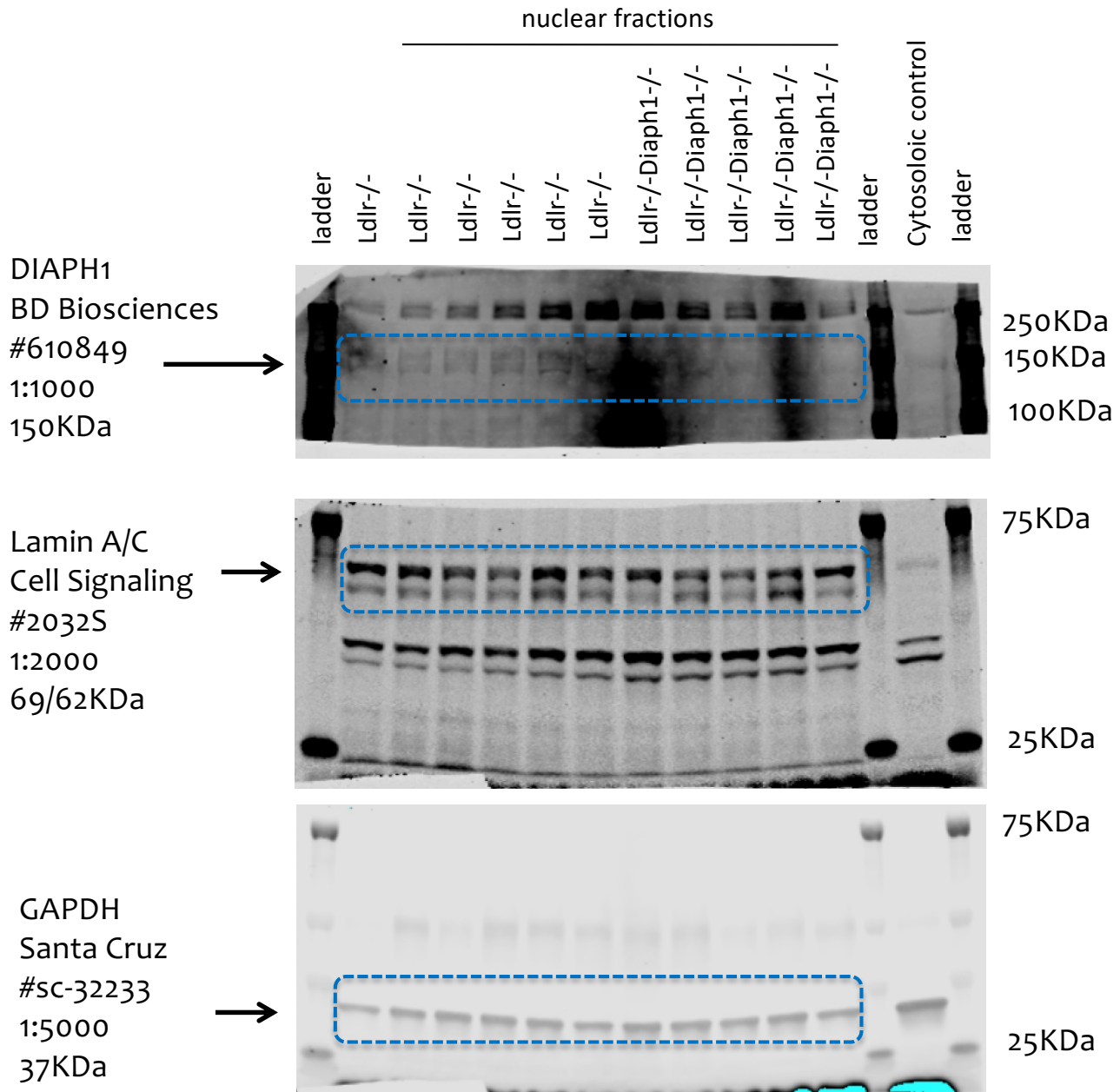


stripped

cropped for Supp figure 7A
quantified in Supp figure 7B

4-20% Acrylamide
Ldlr^{-/-} cytosolic n=6
Ldlr^{-/-}-Diaph1^{-/-} cytosolic =6

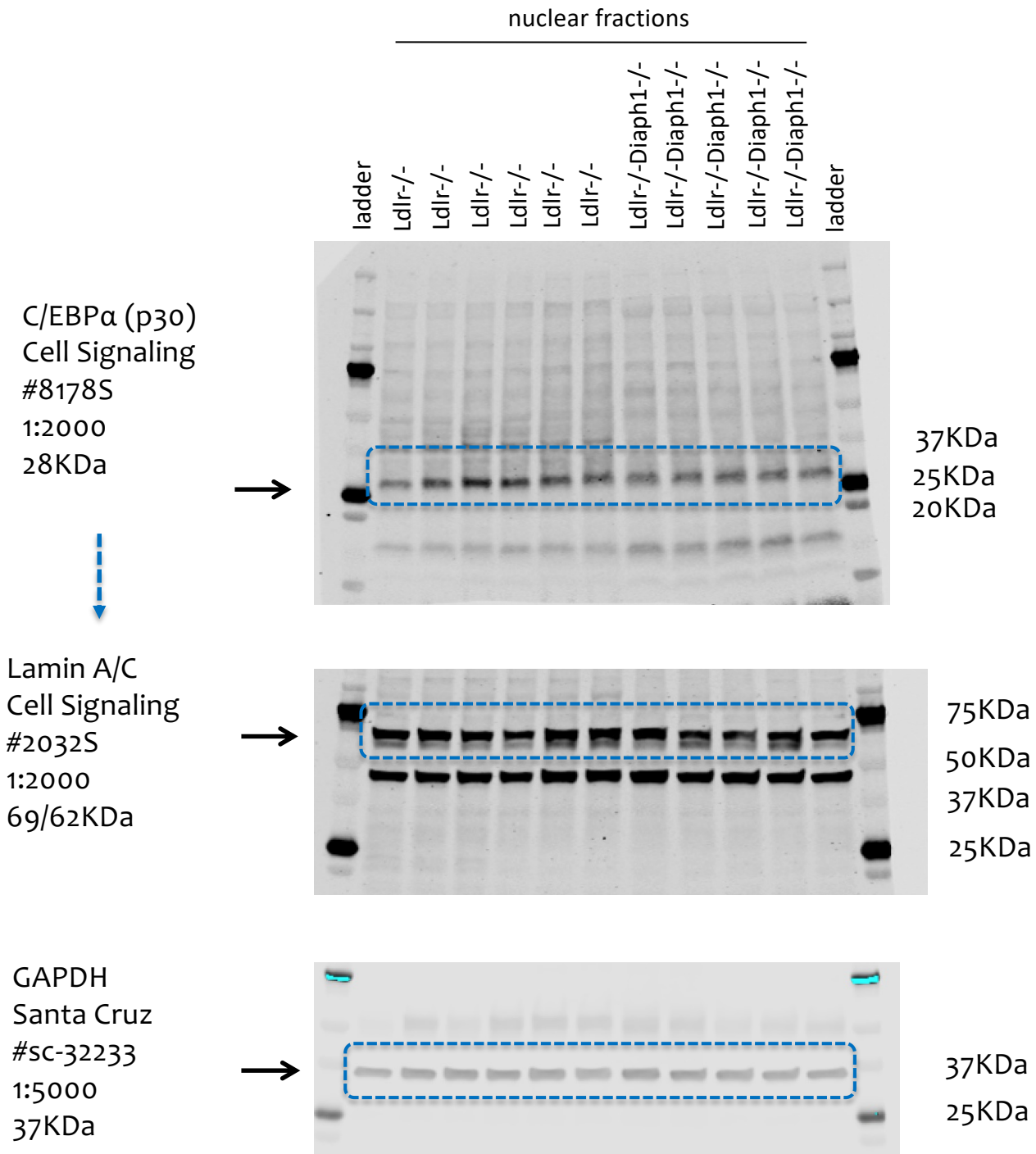
Exp. Code: 069-3-FRACTIONATION in livers



cropped for Supp figure 7A
quantified in Supp figure 7C

7.5% Acrylamide
Ldlr^{-/-} nuclear n=6
Ldlr^{-/-}-Diaph1^{-/-} nuclear n=5

Exp. Code: 069-6-FRACTIONATION in livers



stripped

→

cropped for Supp figure 7A
quantified in Supp figure 7C

4-20% Acrylamide
Ldlr^{-/-} nuclear n=6
Ldlr^{-/-}-Diaph1^{-/-} nuclear n=5

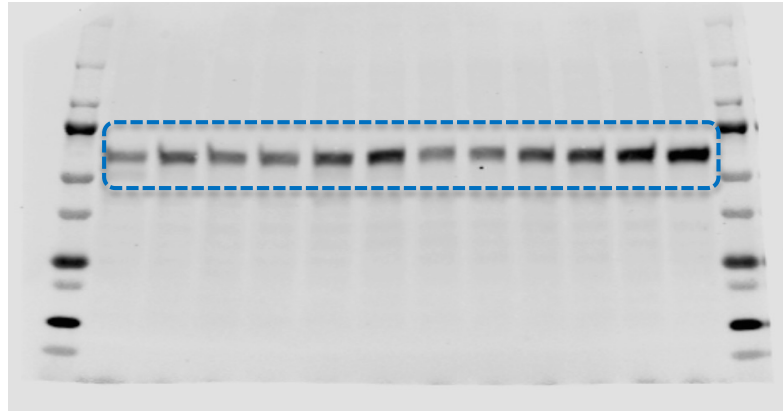
Supplemental Figure 9A-B-C-D-E

Exp. Code: 065-9-TOTAL LYSATE in livers

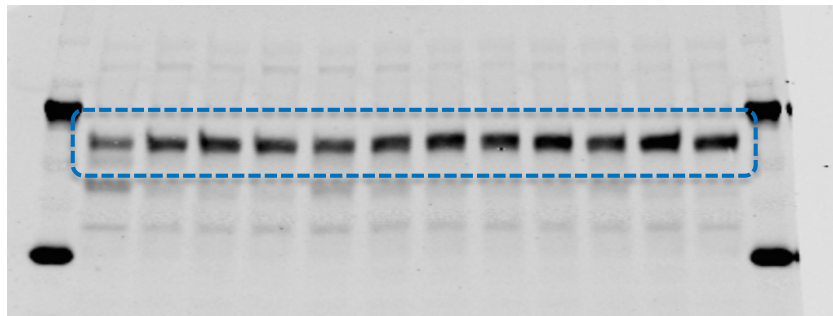
total protein lysate

ladder Ldlr^{-/-} Ldlr^{-/-} Ldlr^{-/-} Ldlr^{-/-} Ldlr^{-/-} Ldlr^{-/-} Ldlr^{-/-} Ldlr^{-/-}Diaph1^{-/-} Ldlr^{-/-}Diaph1^{-/-} Ldlr^{-/-}Diaph1^{-/-} Ldlr^{-/-}Diaph1^{-/-} Ldlr^{-/-}Diaph1^{-/-} Ldlr^{-/-}Diaph1^{-/-} ladder

AMPKα Thr172
Cell Signaling
2535T
1:1000
62KDa



AMPKα
Cell Signaling
5831T
1:2000
62KDa



GAPDH
Santa Cruz
#sc-32233
1:5000
37KDa



stripped

cropped for Supp figure 9A
quantified in Supp figure 9B

4-20% Acrylamide
Ldlr^{-/-} n=6
Ldlr^{-/-}Diaph1^{-/-} n=6

Exp. Code: 065-5-TOTAL LYSATE in livers

total protein lysate

ladder Ldlr^{-/-} Ldlr^{-/-} Ldlr^{-/-} Ldlr^{-/-} Ldlr^{-/-} Ldlr^{-/-} Ldlr^{-/-} Ldlr^{-/-}-Diaph1^{-/-} Ldlr^{-/-}-Diaph1^{-/-} Ldlr^{-/-}-Diaph1^{-/-} Ldlr^{-/-}-Diaph1^{-/-} Ldlr^{-/-}-Diaph1^{-/-} Ldlr^{-/-}-Diaph1^{-/-} ladder

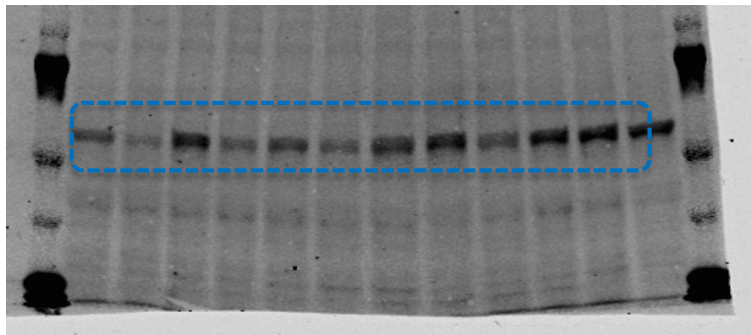
AKT Ser473

Signaling

9271S

1:2000

60KDa



75KDa

25KDa



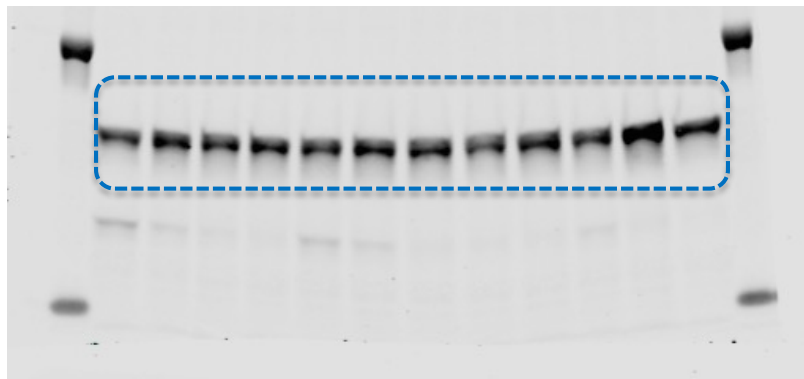
AKT

Cell Signaling

9272S

1:2000

60KDa



75KDa

25KDa



GAPDH

Santa Cruz

#sc-32233

1:5000

37KDa



75KDa

25KDa

stripped

cropped for Supp figure 9A
quantified in Supp figure 9C

7.5% Acrylamide

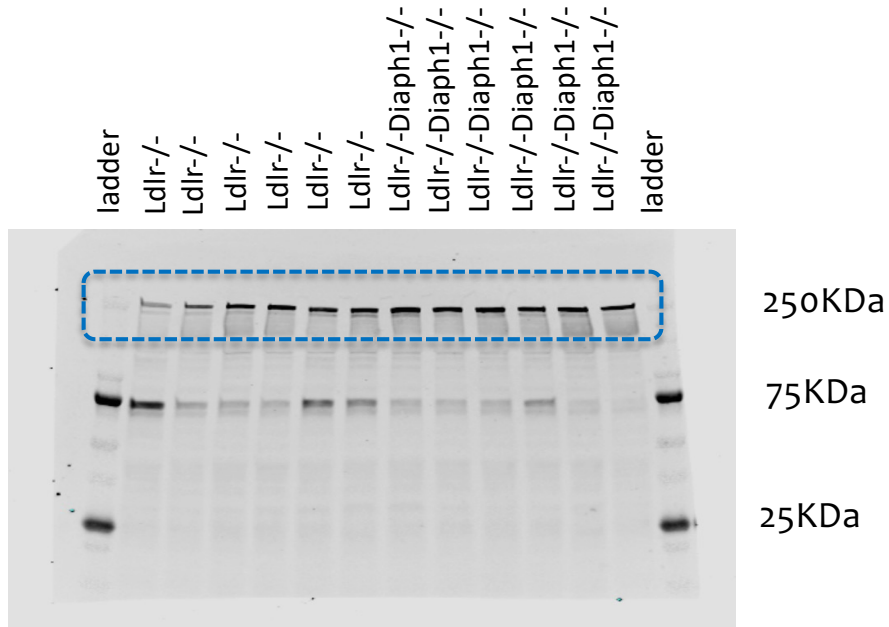
Ldlr^{-/-} n=6

Ldlr^{-/-}-Diaph1^{-/-} n=6

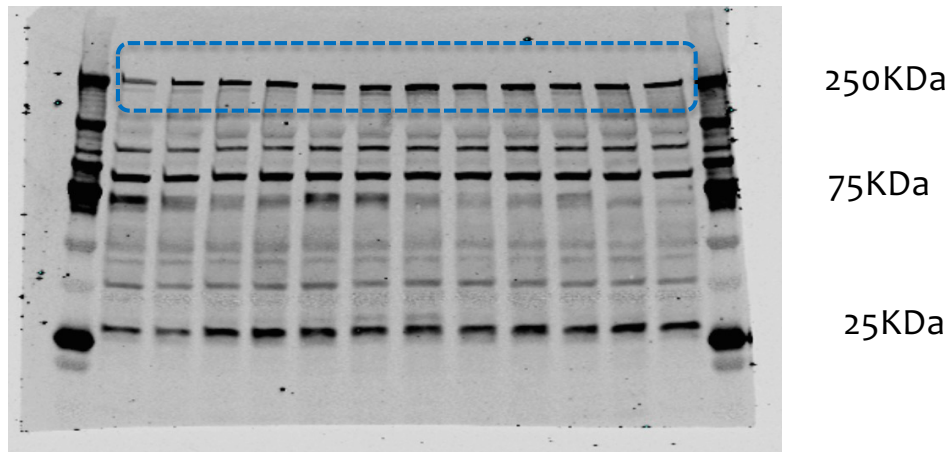
Exp. Code: 065-7-TOTAL LYSATE in livers

total protein lysate

mTOR Ser2448
Cell Signaling
5536T
1:2000
289KDa



mTOR
Cell Signaling
2972S
1:2000
289KDa



GAPDH
Santa Cruz
#sc-32233
1:5000
37KDa



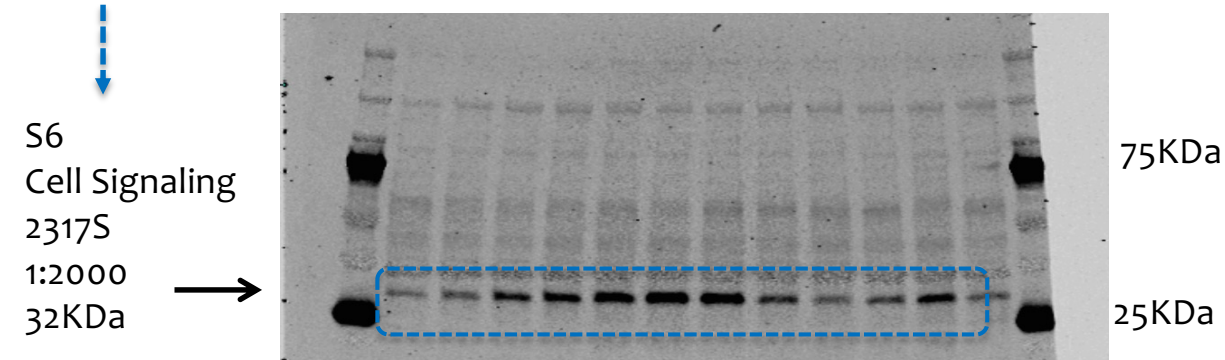
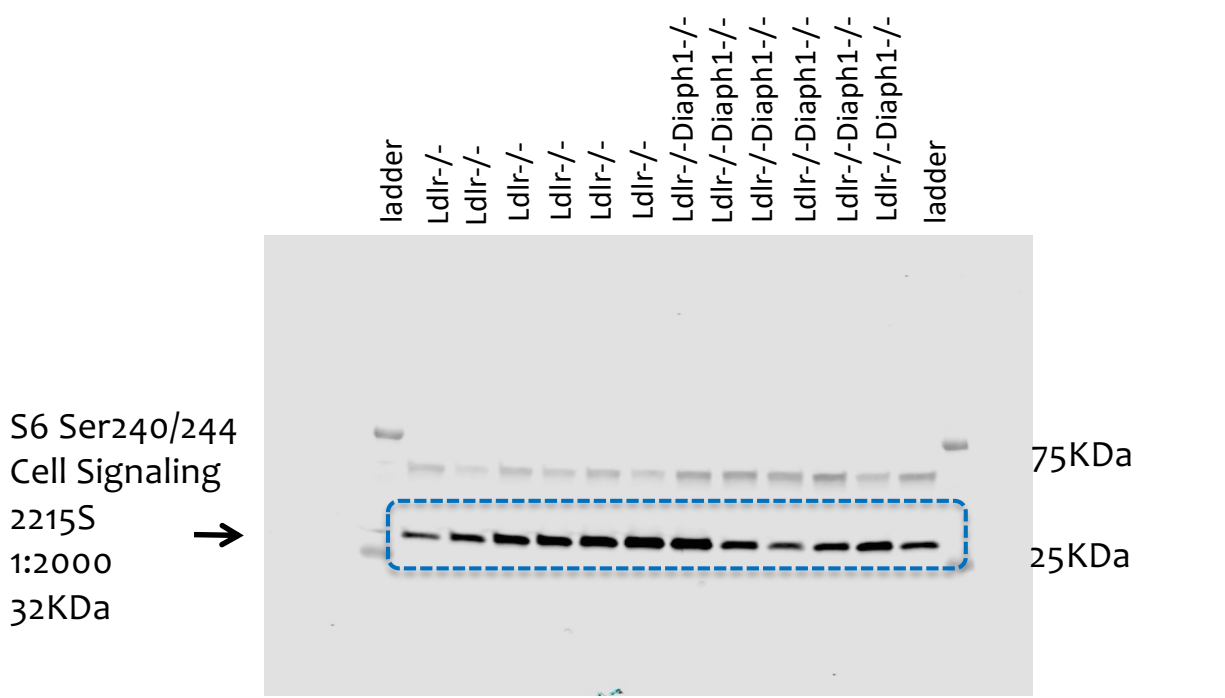
stripped

cropped for Supp figure 9A
quantified in Supp figure 9D

4-20% Acrylamide
Ldlr-/- n=6
Ldlr-/-Diaph1-/- n=6

Exp. Code: 065-8-TOTAL LYSATE in livers

total protein lysate

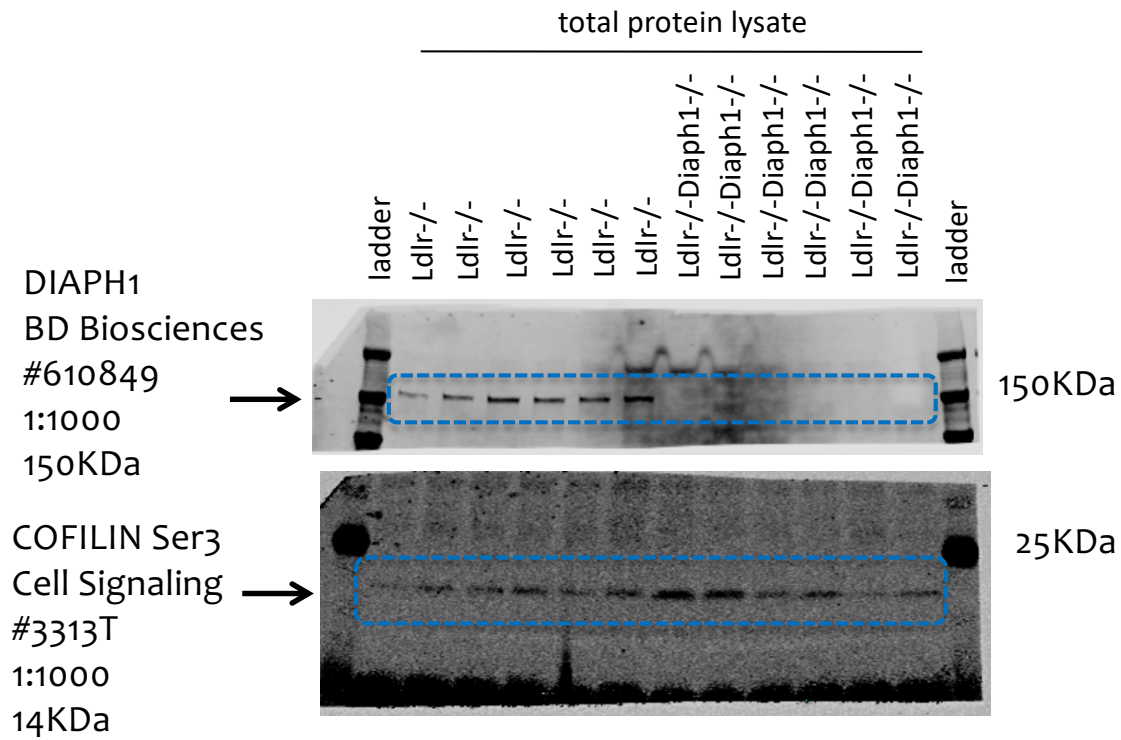


stripped
cropped for Supp figure 9A
quantified in Supp figure 9E

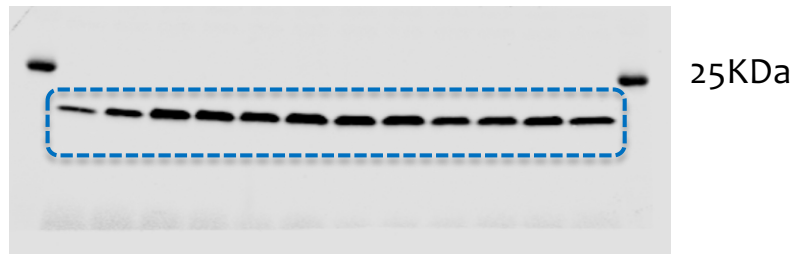
4-20% Acrylamide
Ldlr^{-/-} n=6
Ldlr^{-/-}-Diaph1^{-/-} n=6

Supplemental Figure 10A-B-C

Exp. Code: 076-1-TOTAL LYSATE in Aortas



COFILIN
Cell Signaling
#5175T
1:2000
14KDa



GAPDH
Santa Cruz
#sc-32233
1:5000
37KDa



stripped

cropped for Supp figure 10A
quantified in Supp figure 10B, C

4-20% Acrylamide
Ldlr-/- n=6
Ldlr-/-Diaph1-/- n=6