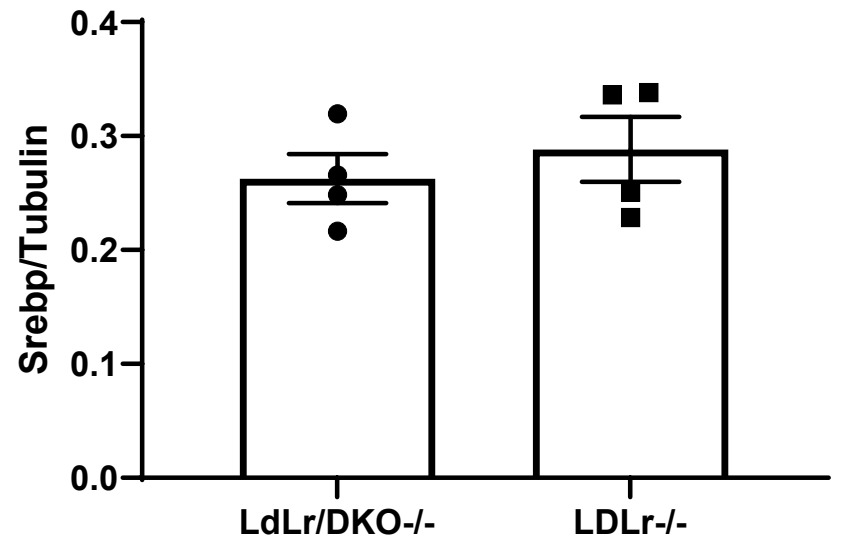
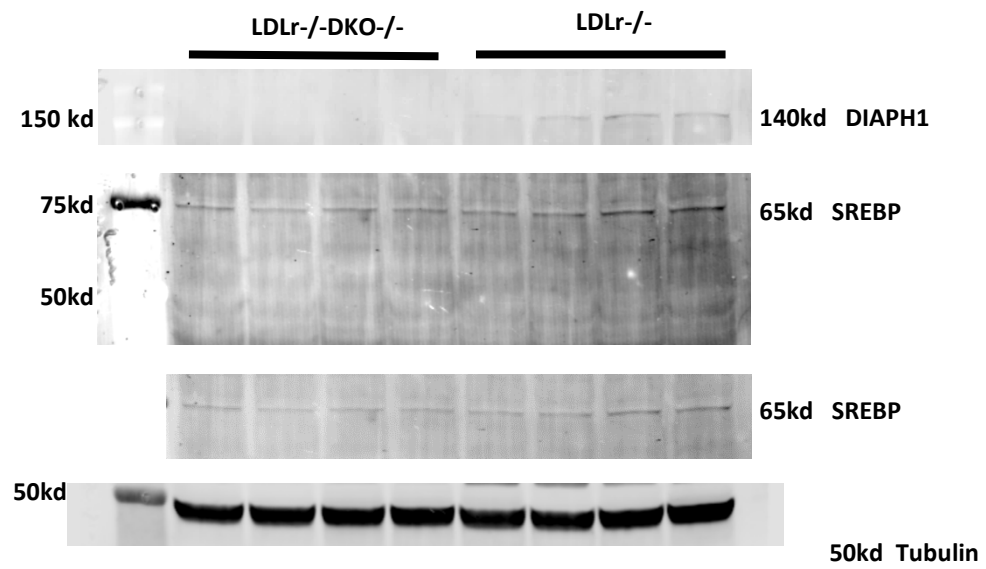


Figure 5D



Column B vs. Column A
 LDLr-/- vs. LdLr/DKO-/-

Unpaired t test
 P value 0.4979
 P value summary ns
 Significantly different (P < 0.05)? No
 One- or two-tailed P value? Two-tailed
 t, df t=0.7212, df=6

How big is the difference?
 Mean of column A 0.2626
 Mean of column B 0.2883
 Difference between means (B - A) ± SEM 0.02576 ± 0.03571
 95% confidence interval -0.06163 to 0.1131
 R squared (eta squared) 0.07977

F test to compare variances
 F, DFn, Dfd 1.757, 3, 3
 P value 0.6547
 P value summary ns
 Significantly different (P < 0.05)? No

Data analyzed
 Sample size, column A 4
 Sample size, column B 4

For publication use below, the image has been flipped

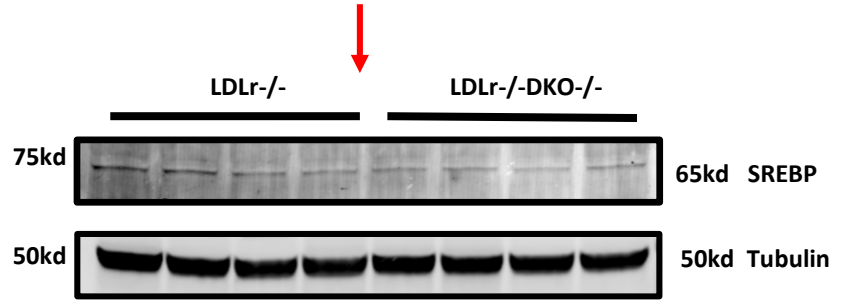


Figure 5D

