

1 **Supplemental materials**

2

3 **Table S1.** Comparison of agonism of hGLP-2R (cAMP accumulation) by glepaglutide  
4 with human GLP-2

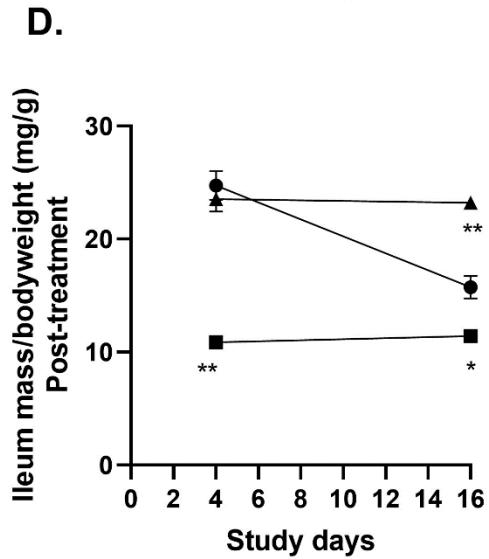
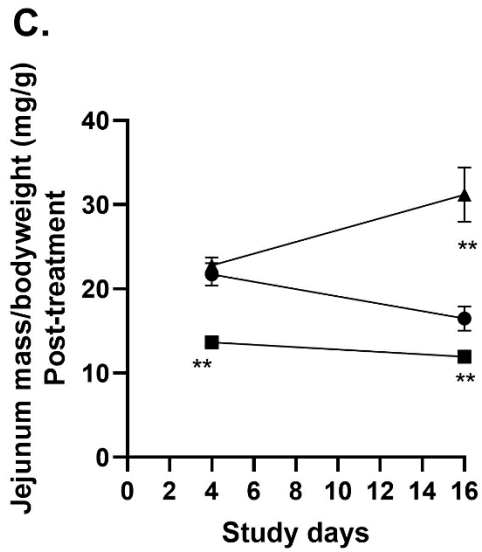
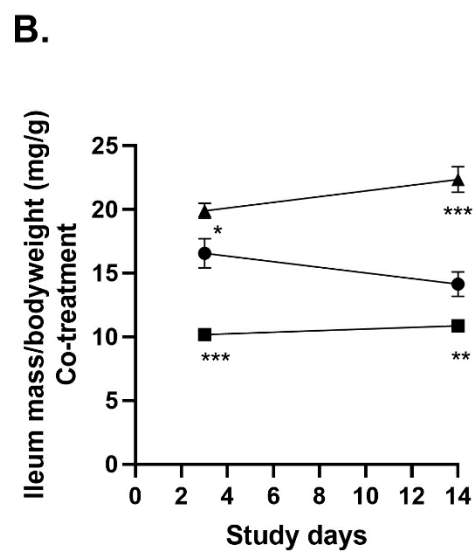
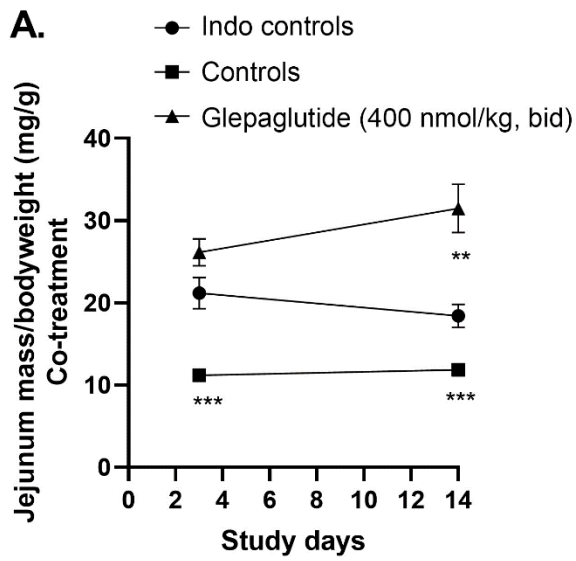
	<b>EC<sub>50</sub> (nM)</b>	<b>pEC<sub>50</sub> ± SEM</b>	<b>E<sub>max</sub> ± SEM</b>	<b>n</b>
Human GLP-2	0.025	10.60 ± 0.07	106 ± 3.7	5
Glepaglutide	0.093	10.03 ± 0.09	102 ± 3.7	5

5 *cAMP*, cyclic adenosine monophosphate; *EC<sub>50</sub>*, half maximal effective concentration; *E<sub>max</sub>*, maximal effect; *GLP-2*,  
6 glucagon-like peptide-2; *hGLP-2R*, human glucagon-like peptide-2 receptor; *pEC<sub>50</sub>*, logarithmically transformed half  
7 maximal effective concentration ( $pEC_{50} = -\log_{10}[EC_{50}]$ ); *SEM*, standard error of the mean

8

9

10 **Figure S2.** Effect of glepaglutide co-treatment and post-treatment on small intestinal  
11 mass in active inflammation and body weight recovery phase. **A** Co-treatment: Jejunum  
12 mass normalized to bodyweight (mg/kg) on day 3. **B** Co-treatment: Ileum mass  
13 normalized to bodyweight (mg/kg) on day 14. **C** Post-treatment: Jejunum mass  
14 normalized to bodyweight (mg/kg) on day 4. **D** Post-treatment: Ileum mass normalized to  
15 bodyweight (mg/kg) on day 16.



\* $p < 0.05$ , \*\* $p < 0.01$ , \*\*\* $p < 0.001$  vs INDO control group. Data shown are mean  $\pm$  SEM

*bid*, twice a day, *INDO*, indomethacin; *SEM*, standard error of the mean