

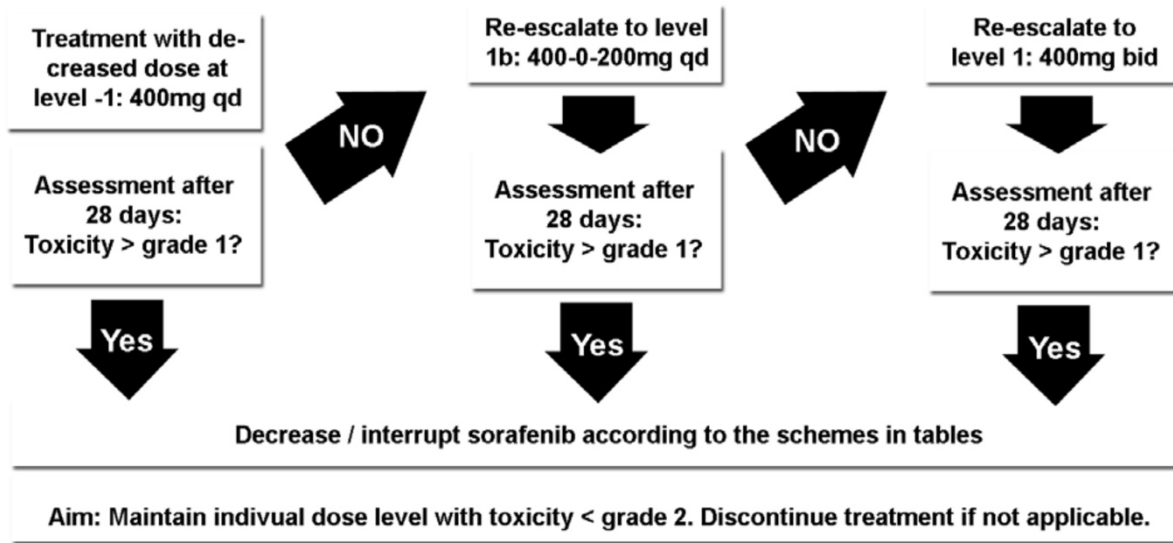
# **Impact of adjuvant sorafenib treatment after local ablation for HCC in the phase II SORAMIC trial**

Max Seidensticker, Osman Öcal, Kerstin Schütte, Peter Malfertheiner, Thomas Berg,  
Christian Loewe, Heinz Josef Klümpen, Otto van Delden, Muzaffer Reha Ümütlü,  
Najib Ben Khaled, Enrico Narciso de Toni, Ricarda Seidensticker, Ali Aghdassi,  
Albert Tran, Jean-Pierre Bronowicki, Bora Peynircioglu, Bruno Sangro, Maciej Pech,  
Jens Ricke

## Table of contents

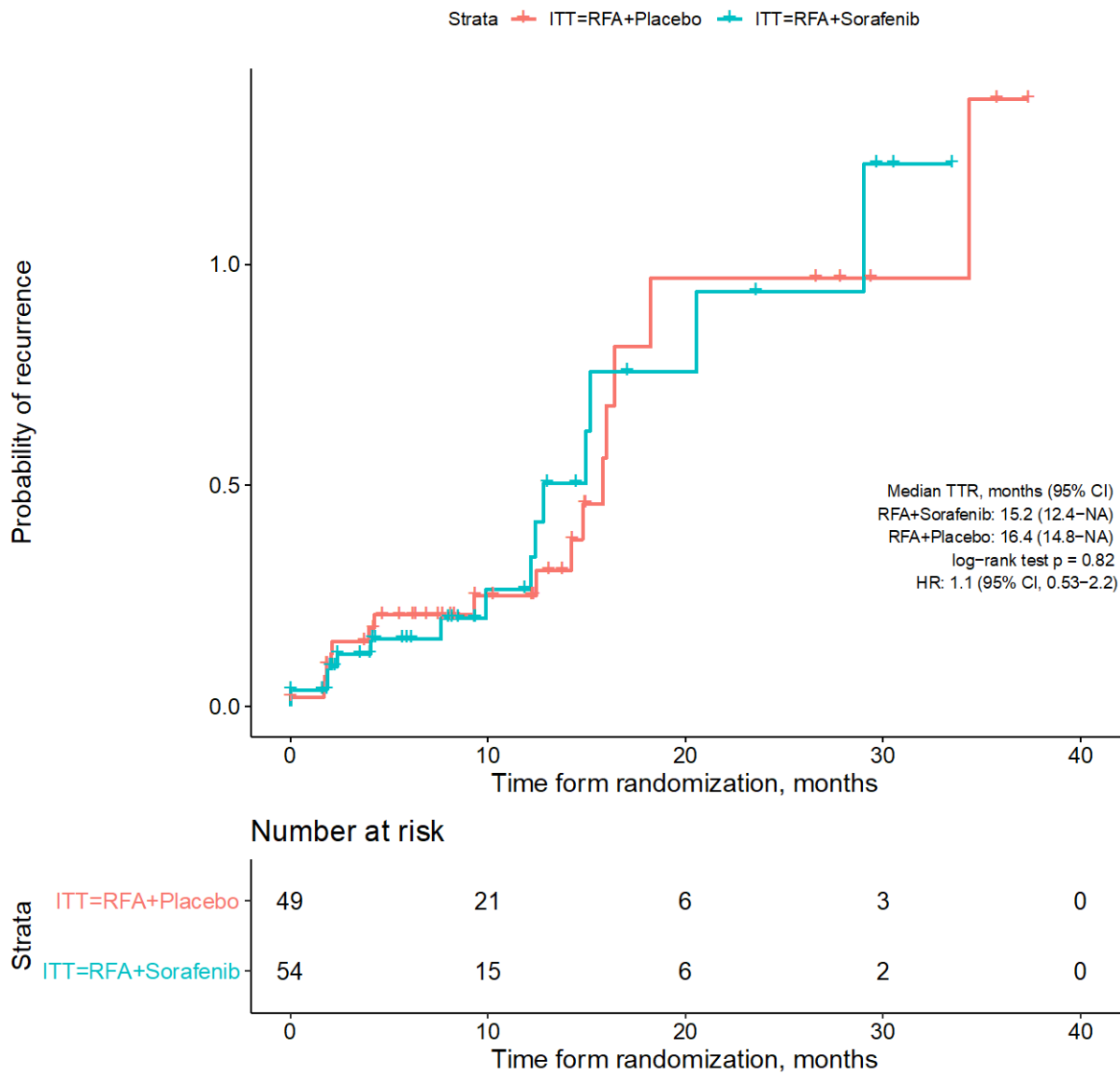
Fig. S1.....	2
Fig. S2.....	3
Fig. S3.....	4
Fig. S4.....	5

Fig. S1



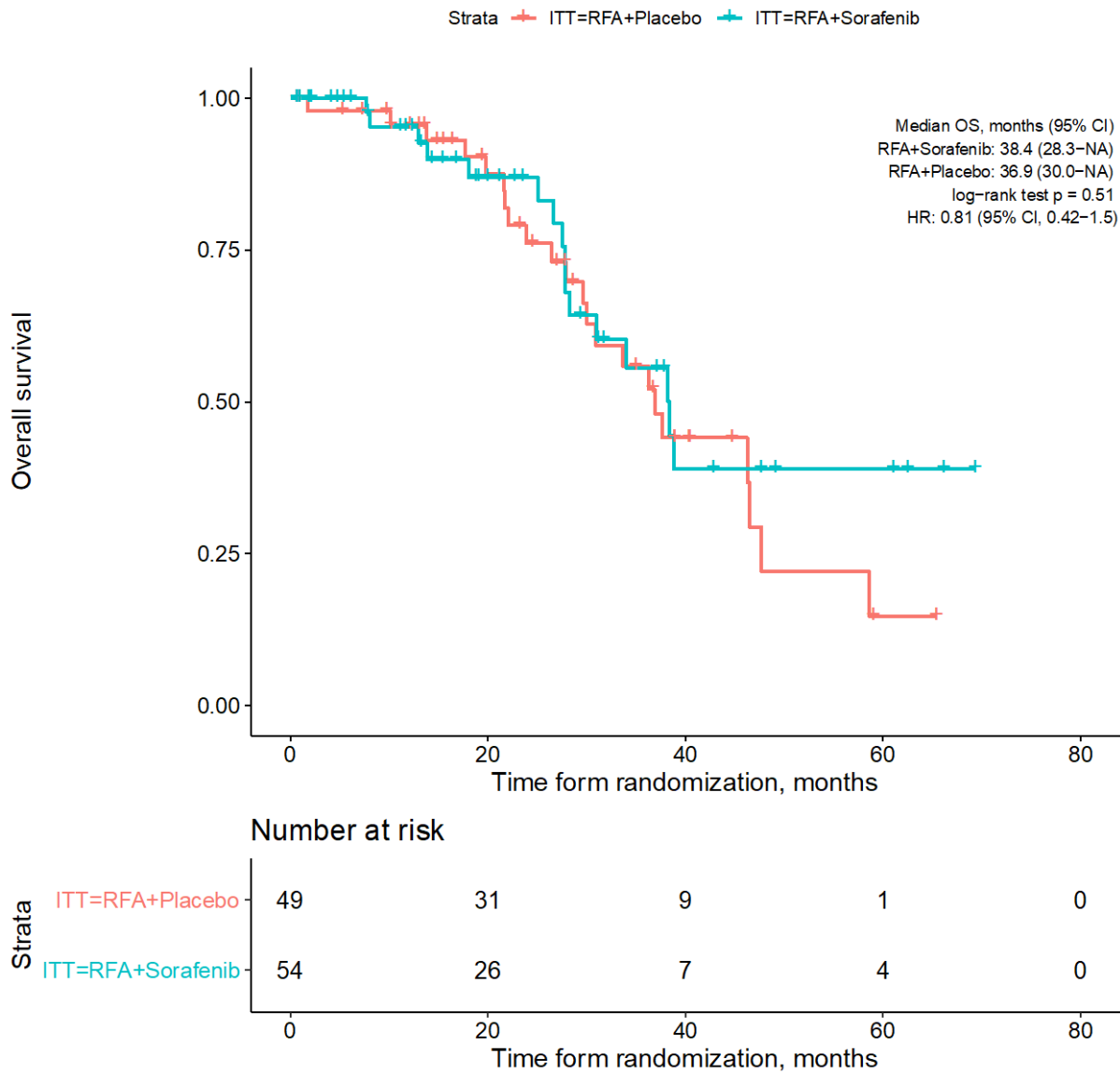
General scheme for dose re-escalation.

**Fig. S2 Time-to-recurrence in ITT population based on independent assessment**



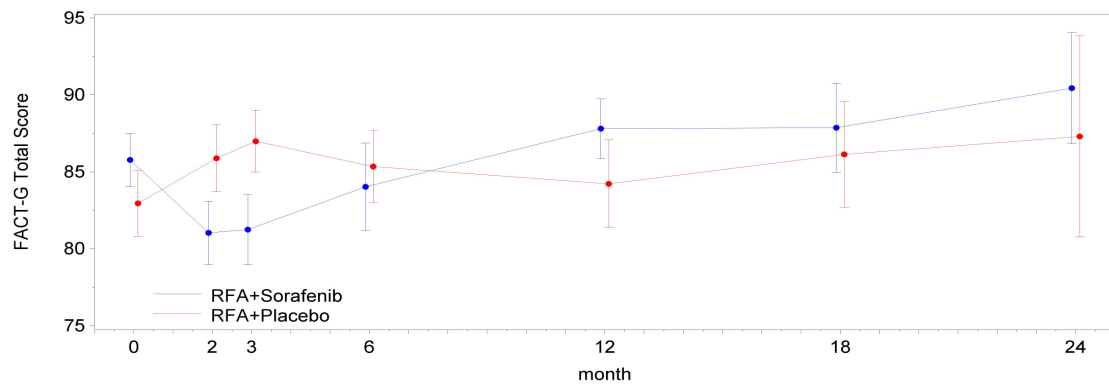
Kaplan-Meier curves comparing time-to-recurrence between two treatment arms in intention-to-treat population. No significant difference ( $p=0.82$ , log rank test).

**Fig. S3 Overall survival in ITT population**



Kaplan-Meier curves comparing overall survival between two treatment arms in intention-to-treat population. No significant difference (p=0.51, log rank test).

**Fig. S4 Longitudinal analysis of FACT-G questionnaire for ITT population**



Blue line represents RFA+Sorafenib arm and red line RFA+Placebo arm.