

1 **S1 Text**

2

3 Below we show the 2013-2019 trends as well as 2020 predictions and actual overdose death rates
4 for the four Census regions of the United States. Methods are similar to those discussed in the
5 Nationwide results section.

6

7

8

9

10

11

12

13

14

15

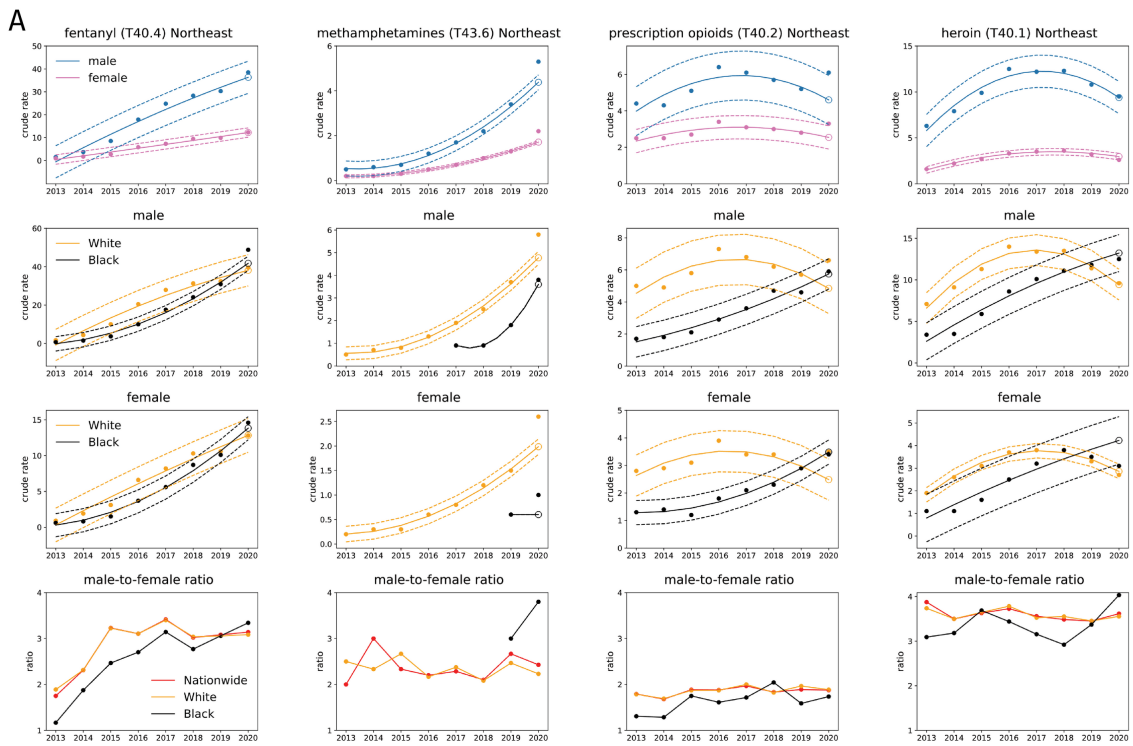
16

17

18

19

20



21

B

22

23

24

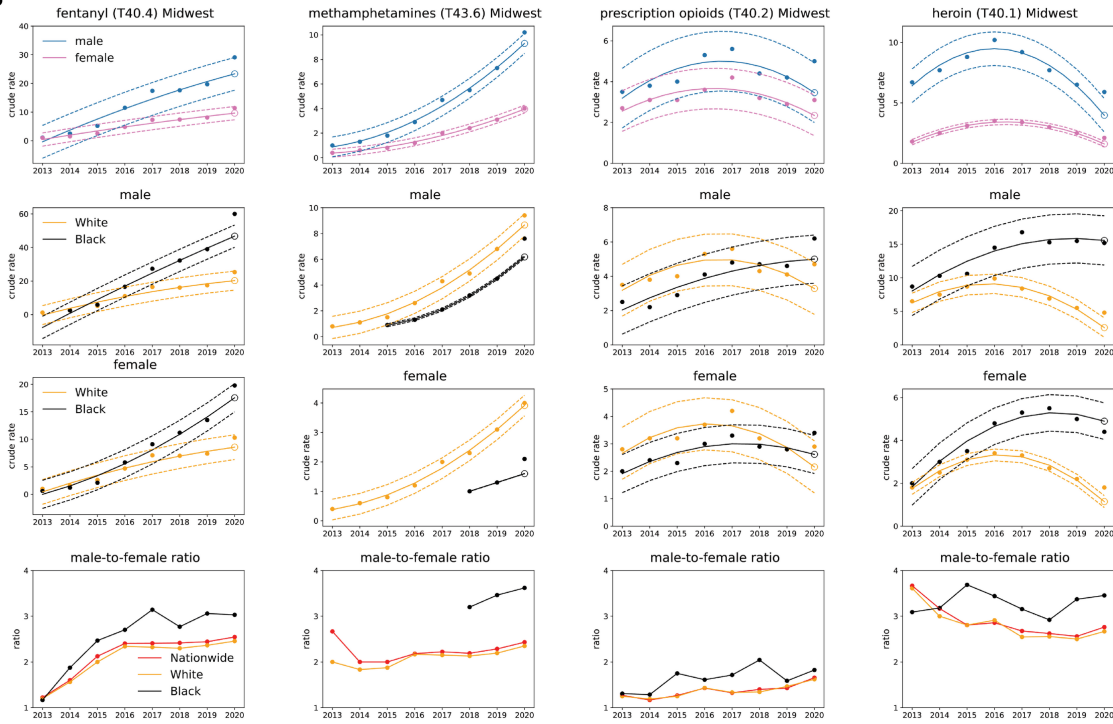
25

26

27

28

29



30

C

31

32

33

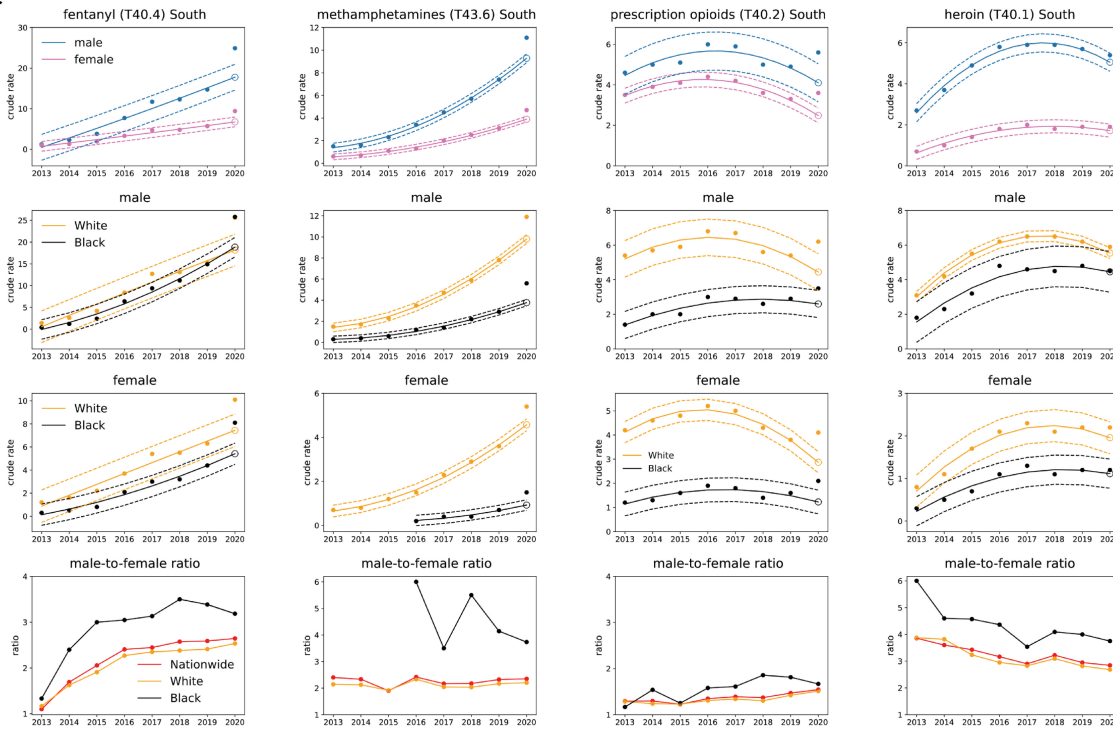
34

35

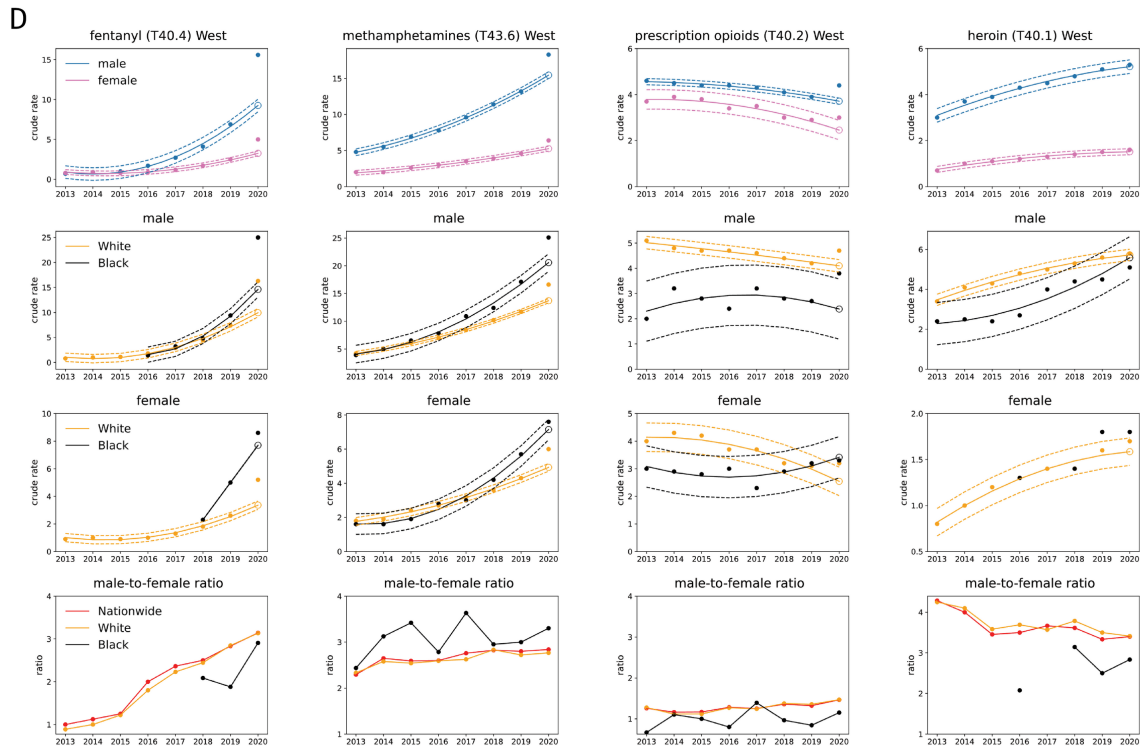
36

37

38



39
40
41
42
43
44
45
46
47



48 **Figs A-D in S1 Text:** Census region gender and race stratified crude rate trends for synthetic
49 opioids (fentanyl, T40.4), psychostimulants with abuse potential (methamphetamines, T43.6),
50 semi-synthetic opioids (prescription opioids, T43.6) and heroin (T40.1). Solid lines in the upper
51 three rows represent the 2013-2019 quadratic regression; dotted lines correspond to values three
52 times above and below the regression by three times the standard deviation calculated from
53 2013-2019 data; the open circle is the 2020 projection. Top row: results are stratified by gender.
54 Second (third) row from top: results are stratified by race for males (females). Last row: Male-
55 to-female ratio for all races. The four census regions are defined as: Northeast (Connecticut,
56 Maine, Massachusetts, New Hampshire, New Jersey, New York, Pennsylvania, Rhode Island,
57 Vermont), Midwest (Illinois, Indiana, Iowa, Kansas, Michigan, Minnesota, Missouri, Nebraska,
58 North Dakota, Ohio, South Dakota, Wisconsin), South (Alabama, Delaware, District of
59 Columbia, Florida, Georgia, Kentucky, Maryland, Mississippi, North Carolina, South Carolina,
60 Tennessee, Virginia, West Virginia), West (Alaska, Arizona, California, Colorado, Hawaii,
61 Idaho, Montana, Nevada, New Mexico, Oregon, Utah, Washington, Wyoming).