

SARS-CoV-2 (COVID-19) Spike S1 antibody [HL6]

Cat No. GTX635654

宿主	Rabbit
克隆	Monoclonal
同种型	IgG
实验应用	WB, ICC/IF, IHC-P, FACS, ELISA, Sandwich ELISA, IHC-P (cell pellet)
种属反应	SARS Coronavirus 2

文献引用 (11)

产品应用

应用说明

*最佳稀释倍数与浓度应由研究人员确认

Suggested dilution	Dilution
WB	1:1000-1:10000
ICC/IF	1:100-1:1000
IHC-P	1:100-1:500
FACS	Assay dependent
ELISA	Assay dependent
Sandwich ELISA	Assay dependent
IHC-P (cell pellet)	Assay dependent

Note : Recommended heat-Induced Epitope Retrieval pH 6.0 for 20 minutes , background Eraser (BGE) blocking step, and DAB Enhancer. Capture : GTX635807, Detection : GTX636042 or Capture : GTX636042, Detection : GTX635807 / GTX635693 / GTX635713 / GTX635654. Please notice that the capture antibody needs to be conjugated to HRP to function as the detection antibody when paired with the detected antibody. Please contact us for custom HRP-conjugated antibody.

WB: 免疫印迹
 ICC/IF: 细胞染色
 IHC-P: 石蜡切片
 IHC-Fr: 冰冻切片

产品属性

形式	Liquid
存储溶液	PBS
保存剂	No Preservative
存放说明	Store as concentrated solution. Centrifuge briefly prior to opening vial. For short-term storage (1-2 weeks), store at 4°C. For long-term storage, aliquot and store at -20°C or below. Avoid multiple freeze-thaw cycles.
浓度	1 mg/ml (Please refer to the vial label for the specific concentration.)
偶联	Unconjugated



For full product information, images and publications, please visit our [website](#).

Date 2022 / 11 / 28 Page 1 of 2

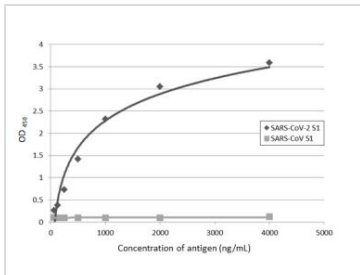
RRID

AB_2888548

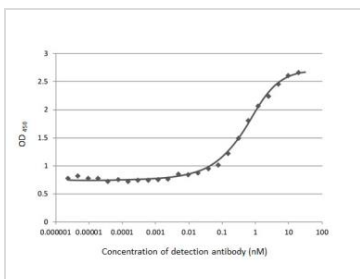
注意事项

仅供实验室使用。不适用于人类或动物的任何临床，治疗或诊断用途。不适合动物或人类食用。

产品图片

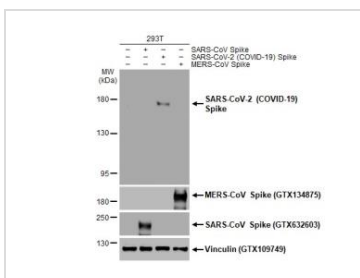
**GTX635654 ELISA Image**

Indirect ELISA analysis performed by coating plate with recombinant SARS-CoV-2 (COVID-19) spike S1 subunit protein or recombinant SARS-CoV spike S1 subunit protein (62.5-4000 ng/mL). Coated protein probed with SARS-CoV-2 (COVID-19) Spike S1 antibody [HL6] (GTX635654) (1 µg/mL). Rabbit IgG antibody (HRP) (GTX213110-01) (1:10000) detected bound primary antibody.

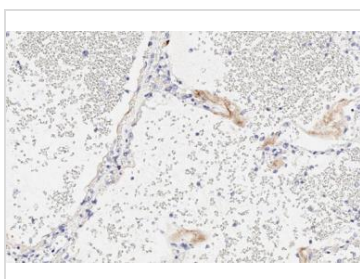
**GTX635654 ELISA Image**

Indirect ELISA analysis performed by coating plate with recombinant SARS-CoV-2 (COVID-19) spike S1 subunit protein (50 ng). Coated protein probed with SARS-CoV-2 (COVID-19) Spike S1 antibody [HL6] (GTX635654) ($2.4 \times 10^{-6} \sim 20$ nM). Rabbit IgG antibody (HRP) (GTX213110-01) (1:10000) detected bound primary antibody.

EC50 : 0.251 nM

**GTX635654 WB Image**

Non-transfected (-) and transfected (+) 293T whole cell extracts (30 µg) were separated by 5% SDS-PAGE, and the membrane was blotted with SARS-CoV-2 (COVID-19) Spike S1 antibody [HL6] (GTX635654) diluted at 1:5000. The HRP-conjugated anti-rabbit IgG antibody (GTX213110-01) was used to detect the primary antibody, and the signal was developed with Trident ECL plus-Enhanced.

**GTX635654 IHC-P Image**

SARS-CoV-2 (COVID-19) Spike S1 antibody [HL6] (GTX635654) detects SARS-CoV-2 (COVID-19) Spike S1 protein by immunohistochemical analysis of SARS-CoV-2 infected human lung.

The IHC-P was performed by HISTOWIZ.



For full product information, images and publications, please visit our [website](#).