

Figure S2

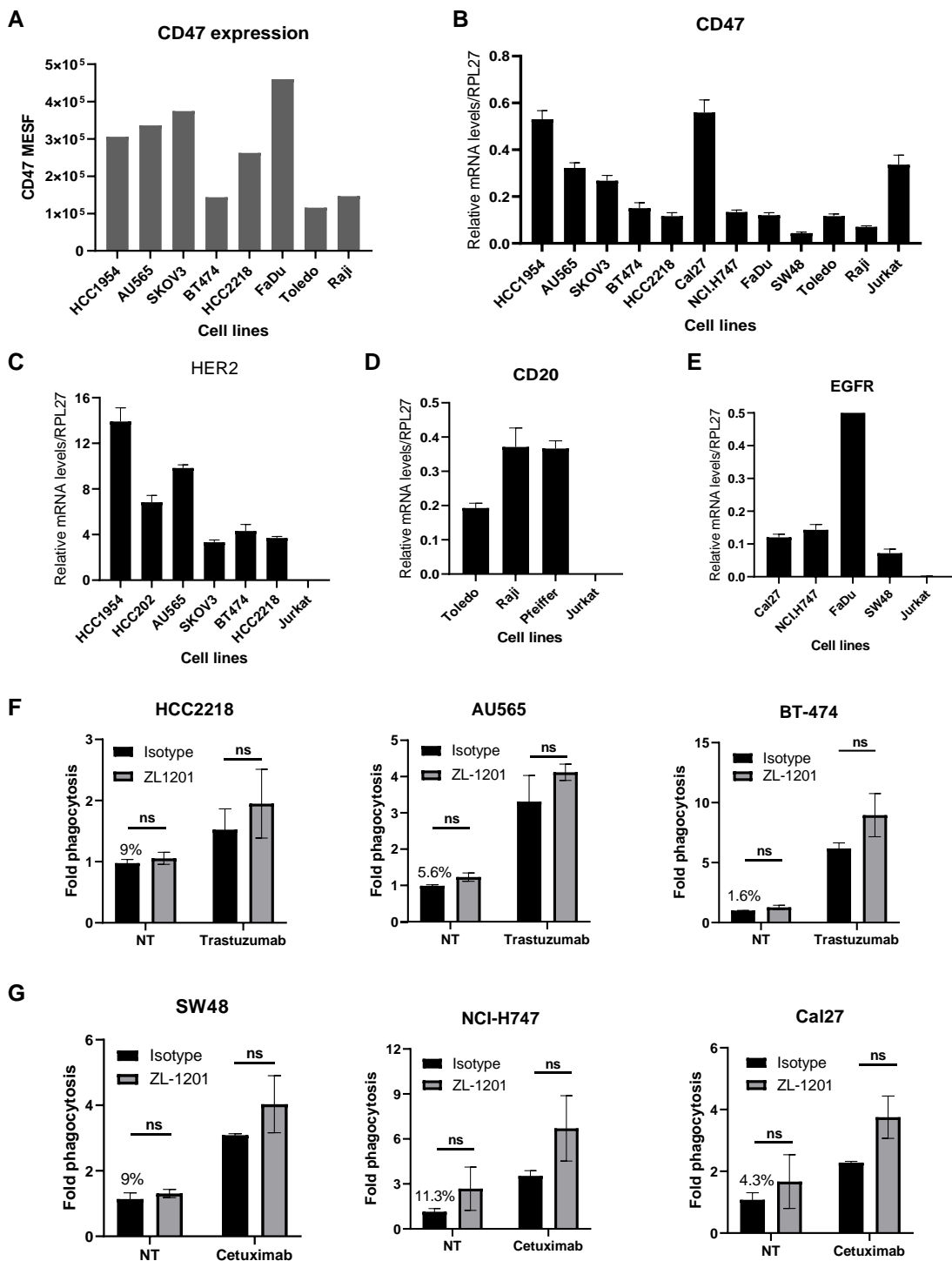


Figure S2. A. CD47 surface expression levels in various cancer models measured by flow cytometry analysis. B-E, CD47 (B), HER2 (C), CD20 (D) and EGFR (E) transcript levels in cancer models were measured by RT-qPCR analysis relative to internal control RPL27. F, In vitro phagocytosis of HER2-amplified solid tumor cells including HCC2218, AU565, and BT-474 treated with isotype control (10 μ g/mL), ZL-1201 (10 μ g/mL), trastuzumab (0.1 μ g/mL), or their combination. G. In vitro phagocytosis of EGFR-driven SW48, NCI-H747, and Cal27 cells treated with isotype control (10 μ g/mL), ZL-1201 (10 μ g/mL), cetuximab (0.1 μ g/mL), or their combination. Fold phagocytosis in F and G was calculated relative to isotype in non-treated (NT) conditions, the raw phagocytosis percentages are indicated in each figure. Data was shown as mean \pm SD; * p <0.05, ** p <0.01, *** p <0.001.