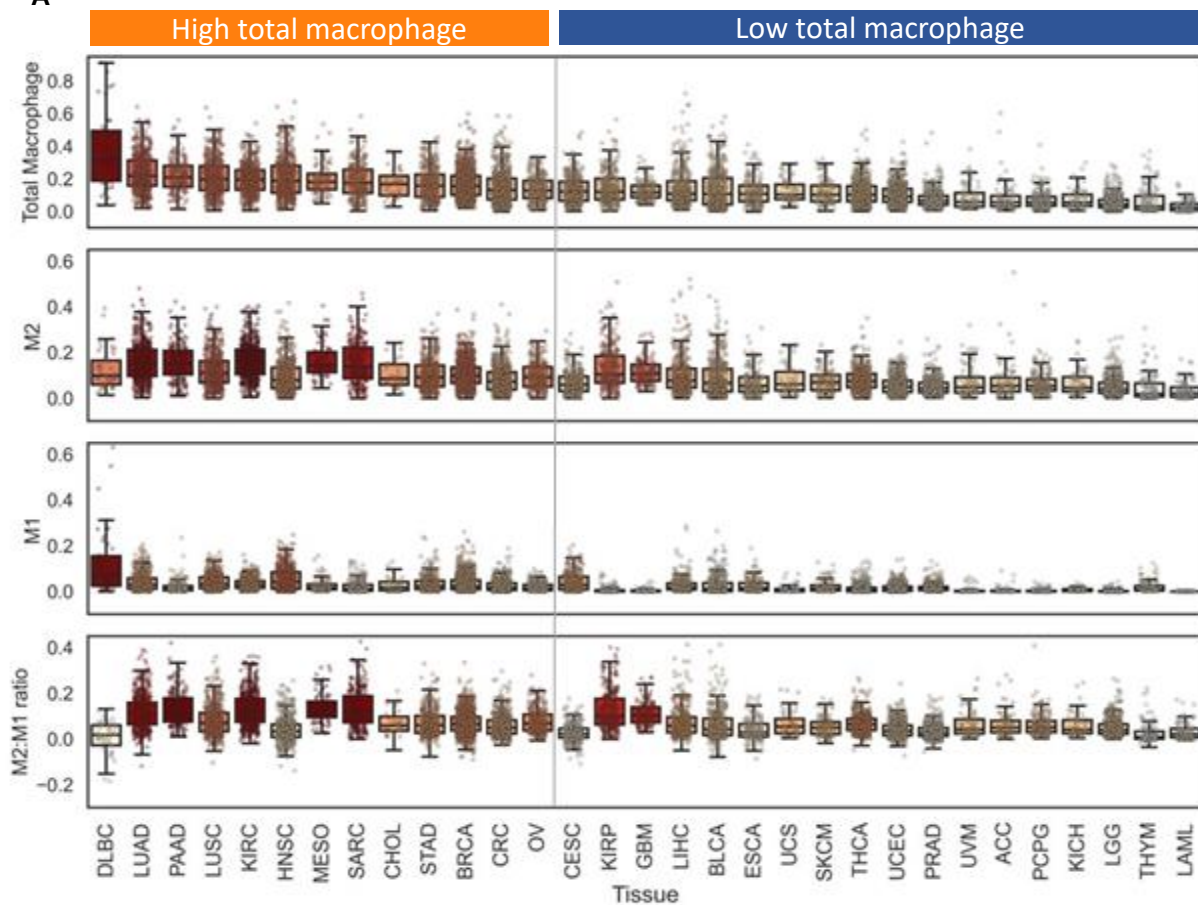
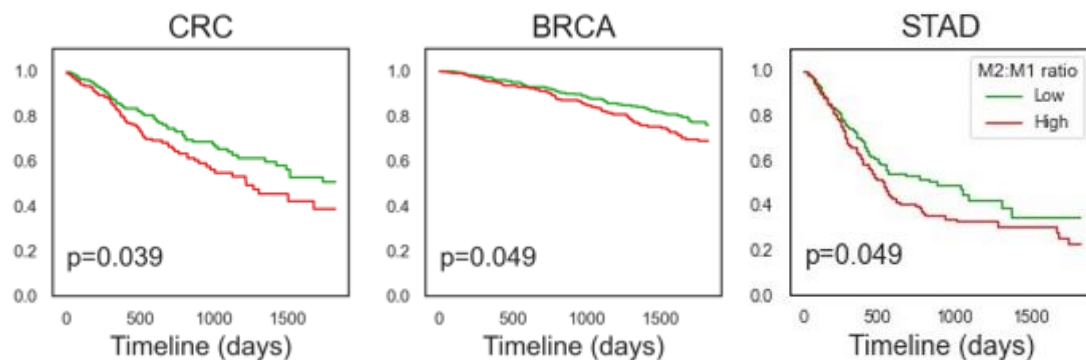


# Figure S5

A



B



**Figure S5.** A. Macrophage biomarker landscape across >11K TCGA patients. For each of four biomarkers (total macrophage score, M2, M1, and M2:M1 ratio), each patient is displayed as a point and each tissue type is summarized as a boxplot. Points and boxes are colored from white to red based on median value for the tissue type. The top row shows the total macrophage scores ( $M0+M1+M2$  from CIBERSORT-ABS), the second and third rows depict the M2 and M1 macrophage subsets, and the fourth row shows the ratio between M2 and M1 macrophages (as  $\log_2(M2+1) - \log_2(M1+1)$ ). The vertical grey line across all rows shows which tissue types were considered macrophage-high (left) and low (right). B. Kaplan-Meier plots of M2:M1 ratio-high versus M2:M1 ratio-low subgroups in colorectal (CRC), breast (BRCA), and gastric (STAD) cancer types with poorer progression-free interval (PFI) across a 5-year duration.