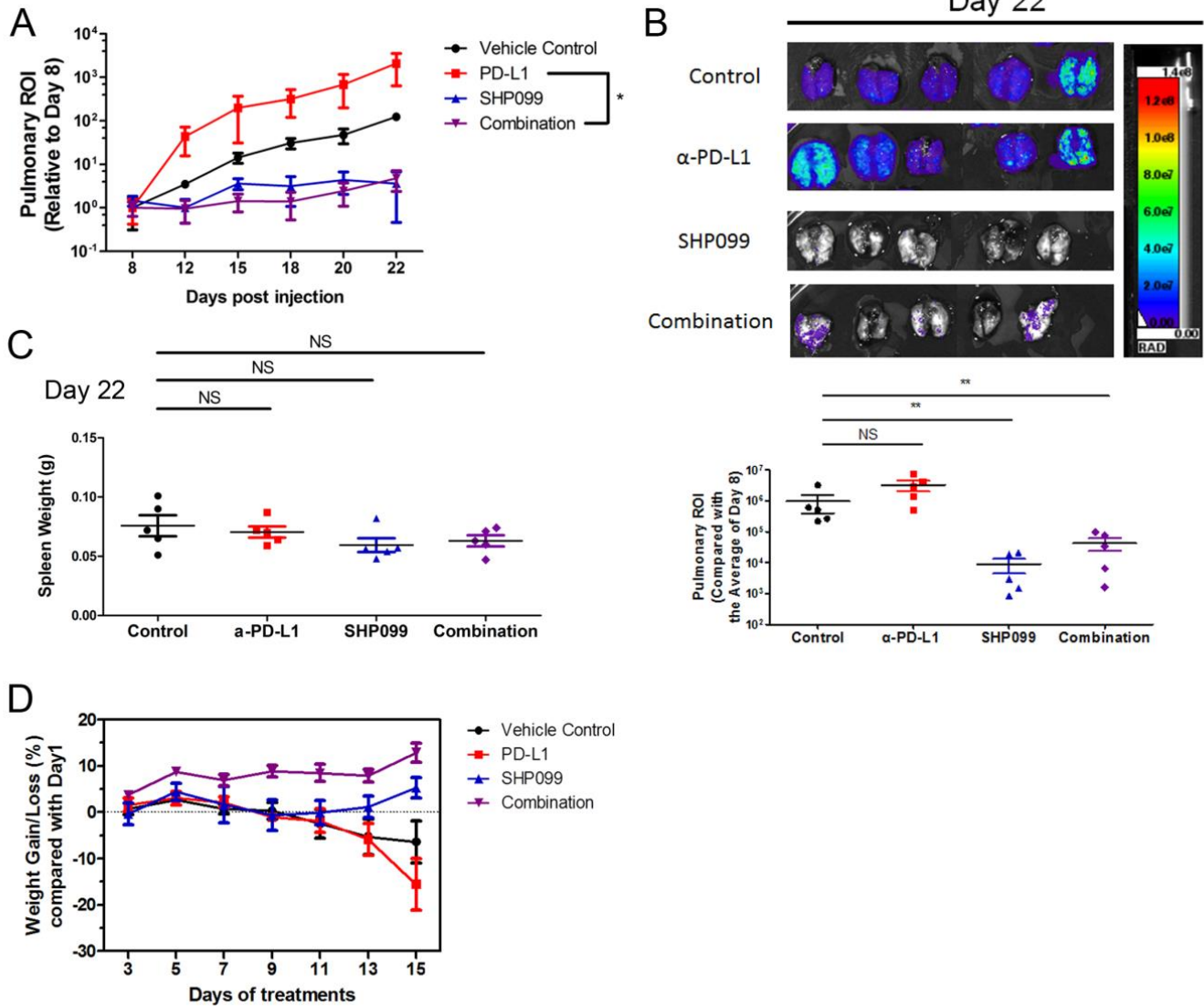


Supplementary Figure 1



Supplementary Figure 1. Combination of SHP099 and α -PD-L1 delays D2.A1 pulmonary growth *in vivo* A, Bioluminescence values for pulmonary regions of interest (ROI) from mice with D2.A1 cell growth in lungs normalized to Day 8 post injection. Data are the mean \pm s.e.m. of 5 mice per treatment group. * $p < 0.05$. B, (top) Representative bioluminescent images of the lungs at Day 22 post injection and (bottom) quantified ROI values of the lungs normalized to the average ROI values of Day 8 post injection. Data are the individual plots and mean \pm s.e.m. of 5 mice per group, NS: not significant, ** $p < 0.01$ determined by Mann Whitney test. C, Dot plot showing the spleen weight of the mice at Day 22 post injection. Data are the individual plots and mean \pm s.e.m. of 5 mice per group, NS: not significant determined by Mann Whitney test. D, Mice were treated with SHP099 and α -PD-L1 as indicated in figure 1. The body weights of mice were monitored every 2 days, and the percentage of weight gain/loss was normalized to Day 1 of the treatment.