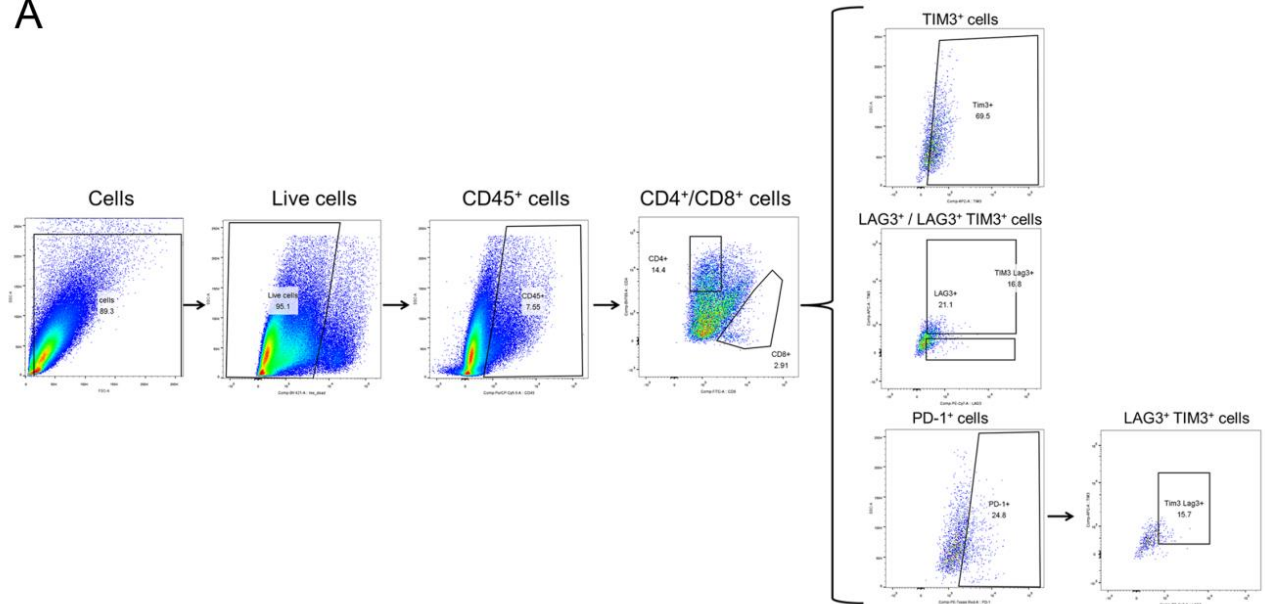
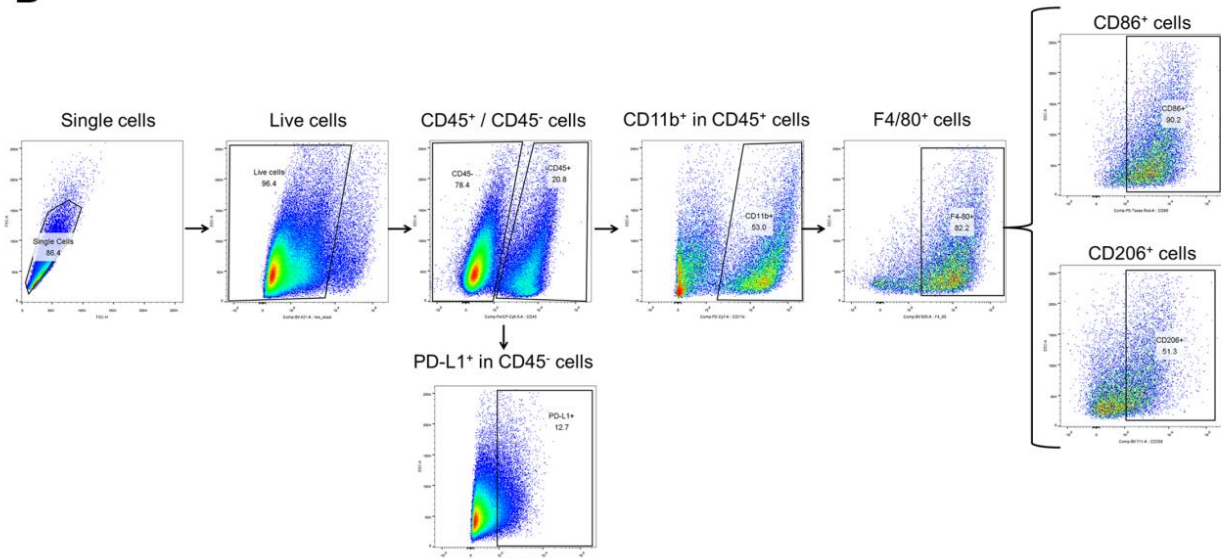


Supplementary Figure 2

A



B



Supplementary Figure 2. The gating ancestry for the populations in the study of D2.A1 model A, Spleens and tumors from lung tissues were isolated and digested into single cell suspensions, and stained with lymphoid antibody panel as described in the materials and methods. These cells were sequentially gated as shown to identify a population of cells, live cells, CD45⁺ and CD4⁺/CD8⁺ cells prior to analysis of TIM3⁺, LAG3⁺, TIM3⁺LAG3⁺ and PD-1⁺. The TIM3⁺LAG3⁺ cells were also gated under PD-1⁺ population. B, Tumors from lung tissues were isolated and digested into single cell suspensions, and stained with myeloid antibody panel as described in the materials and methods. These cells were sequentially gated as shown to identify a population of single cells, live cells, CD45⁺/CD45⁻, CD11b⁺ and F4/80⁺ cells prior to analysis of CD86⁺ and CD206⁺. The PD-L1⁺ cells were also gated under CD45⁻ population.