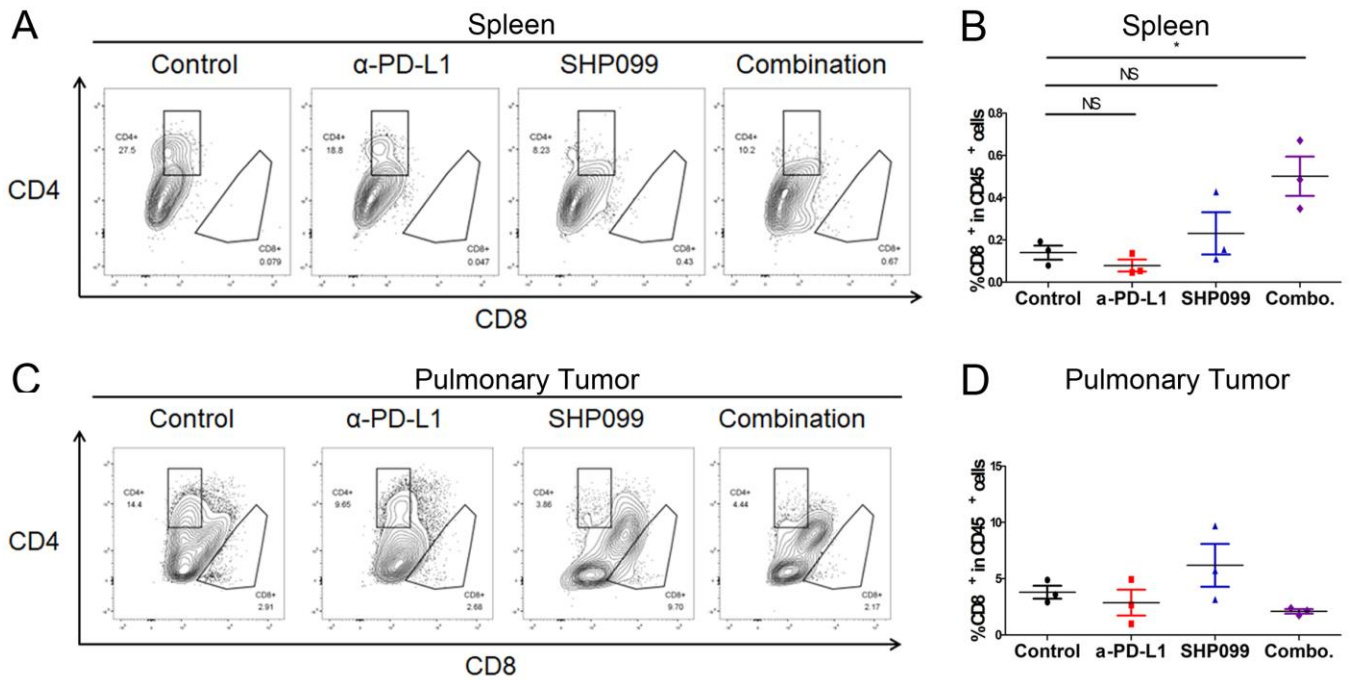


## Supplementary Figure 3



**Supplementary Figure 3. Corresponding representative dot plots for the quantification in figure 2A and additional T cell composition analysis in the study of D2.A1 model.** A, Representative dot plots of CD4<sup>+</sup> and CD8<sup>+</sup> population as a frequency of CD45<sup>+</sup> cells in isolated spleens of each group. B, Quantification of CD8<sup>+</sup> populations as a frequency of CD45<sup>+</sup> cells in isolated spleens of each group. NS: not significant, \*p<0.05, n=3. C, Representative dot plots of CD4<sup>+</sup> and CD8<sup>+</sup> population as a frequency of CD45<sup>+</sup> cells in isolated lung tissues (right) of each group. D, Quantification of CD8<sup>+</sup> populations as a frequency of CD45<sup>+</sup> cells in isolated lung tissues (right) of each group.