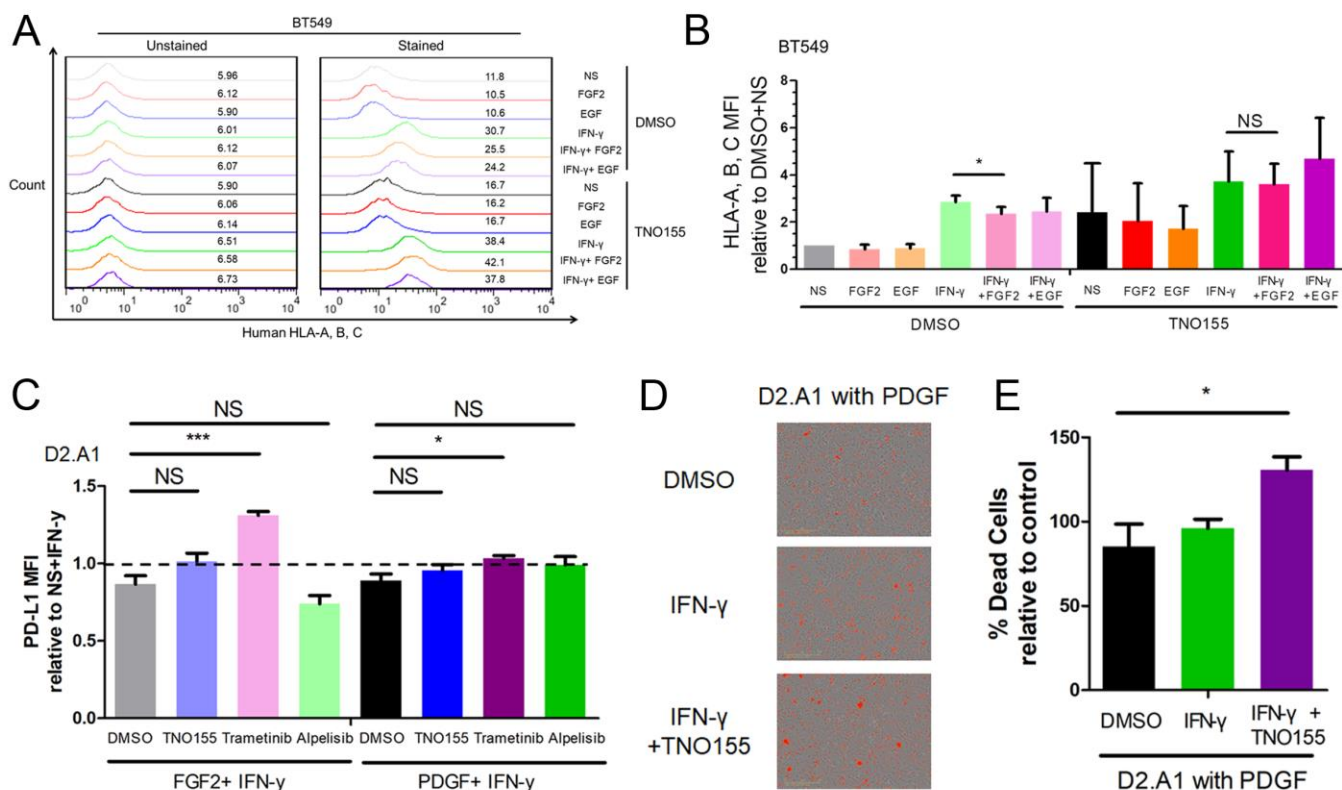


Supplementary Figure 16



Supplementary Figure 16. SHP2 regulates MHC class I expression via the balance between MAPK and STAT1 signaling in human MBC cells. A, Cell surface analysis of HLA-A,B,C in BT549 cells treated with different growth factors, human interferon- γ (200ng/ml) and TNO155 (5 μ M) using flow cytometer. B, Bar graph comparing fold change of HLA-A,B,C MFI induced by different growth factors, interferon- γ and TNO155 compared to DMSO + no stem group. NS: not significant, *p<0.05, n=3. C, Bar graph comparing fold change of PD-L1 MFI induced by different growth factors and interferon- γ compared to interferon- γ alone with different inhibitors in D2.A1 cells. NS: not significant, **p<0.01, ***p<0.001, n=3. D, Representative images of the D2.A1 cells treated with interferon- γ (200ng/ml) and interferon- γ (200ng/ml) + TNO155 (5 μ M) under PDGF (100ng/ml) stimulation at 1 hour following co-culturing with T cells. E, Bar graph comparing the percentage of dead cell counts with different treatments normalized to control (DMSO only with no PDGF). *p<0.05, n=4 individual repeats.