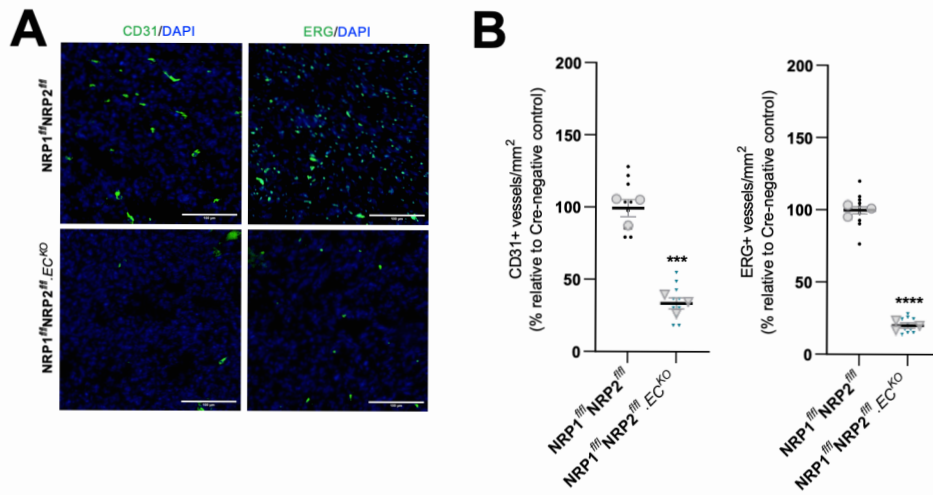


# Suppl. Figure 2



**Supplementary Figure 2: A)** Representative tumour sections from Cre-negative and Crepositive PyMT-BO1 tumours showing CD31 (left panels) and ERG+ vasculature (right panels). Scale bar = 100  $\mu$ m. **B)** Corresponding quantification of % blood vessel density per mm<sup>2</sup> from PyMT-BO1 tumours. Mean quantification performed on 3x ROIs per tumour section, from 1-3 sections per tumour. Data presented as a percentage of the average % vessel density observed in their Cre-negative littermate controls. Error bars show mean  $\pm$  SEM; n $\geq$ 3. Asterix indicate significance.