

Figure S1

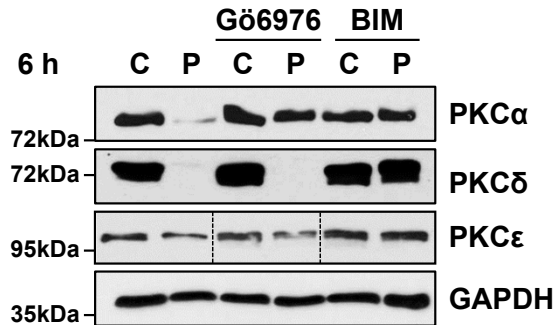


Figure S1: Gö6976 selectively inhibits PKC α activity in IEC-18 cells.

IEC-18 cells express three PMA-responsive PKC isozymes: conventional PKC α and novel PKC δ and PKC ϵ (9). Gö6976 targets the conventional PKCs, while BIM is a pan-PKC inhibitor. The selectivity of Gö6976 for PKC α can be seen in its ability to block agonist (PMA)-induced, *activity-dependent* downregulation of PKC α , while not affecting the downregulation of PKC δ or PKC ϵ . Although PKC ϵ is more resistant to PMA-induced downregulation (7), the modest downregulation observed was blocked by the pan-PKC inhibitor BIM but not by Gö6976. C: Vehicle treated control; P: PMA. Each panel is from a single blot; dashed lines indicate rearrangement of the PKC ϵ blot for clarity.