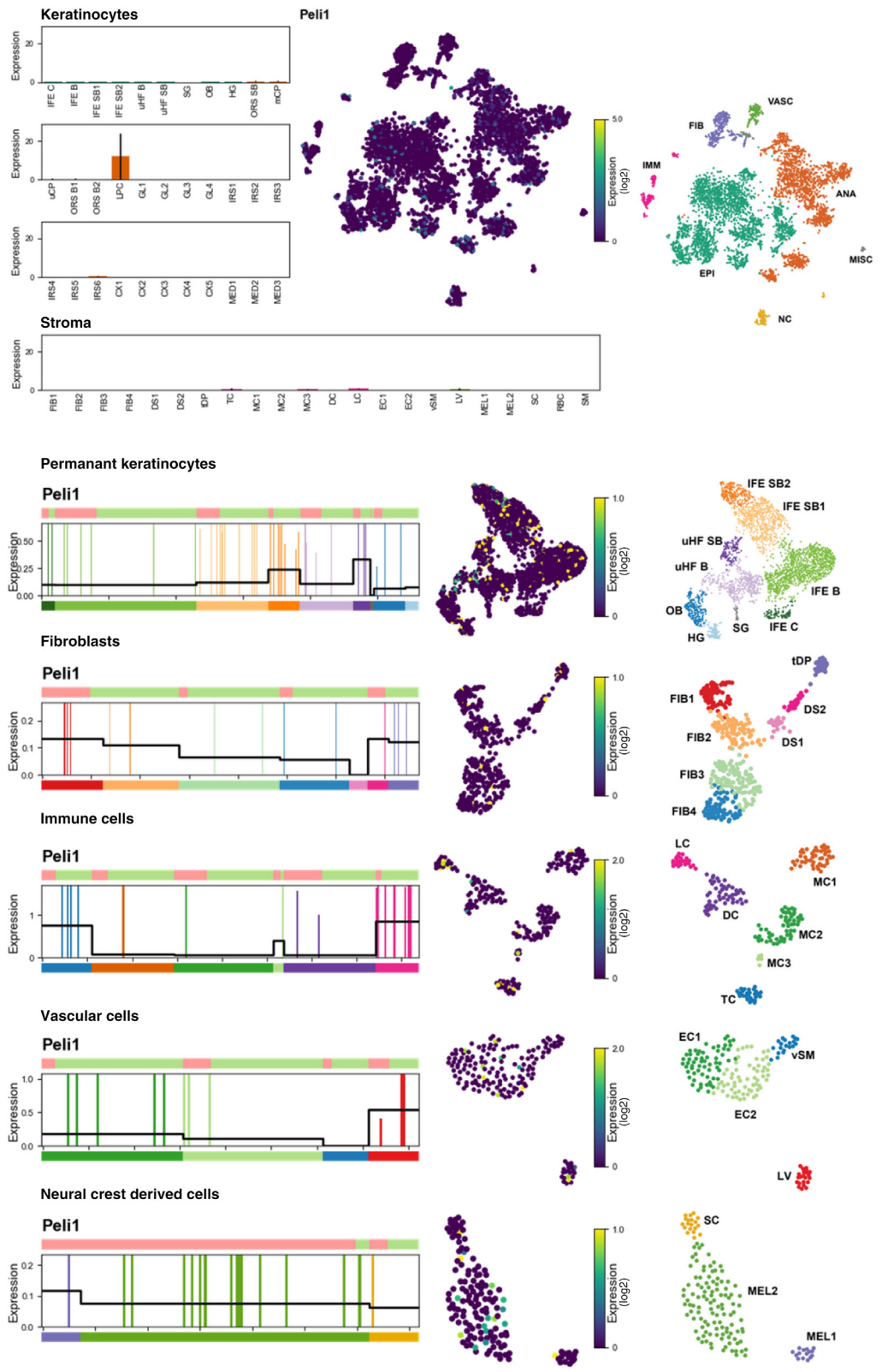


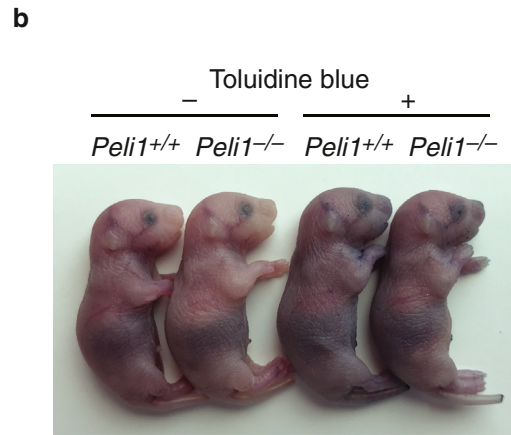
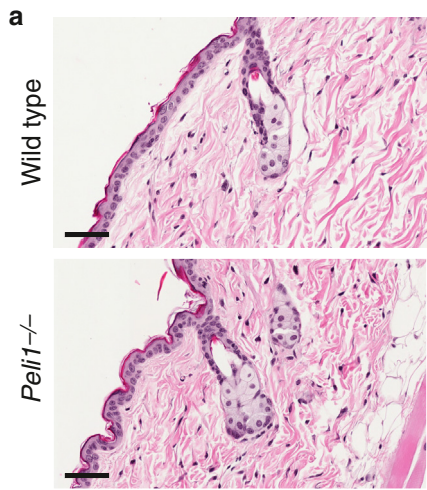
SUPPLEMENTARY MATERIALS

Supplementary Figure S1. *Peli1* is expressed in multiple cell types in the skin. The distribution of *Peli1* mRNA expression in mouse skin was visualized using the online tool <http://kasperlab.org/mouseskin> (Joost et al., 2020). Permanent keratinocytes include IFE B, IFE C, IFE SB1, IFE SB2, uHF B, uHF SB, OB and HG. Fibroblasts include FIBs (FIB1/FIB2/FIB3/FIB4), DS1, DS2 and tDP. Immune cells include TC, MCs (MC1/MC2/MC3), DCs, and LCs. Vascular cells include ECs (EC1/EC2), vSM, and LV. Neural crest derived cells include MELs (MEL1/MEL2) and SCs. ANA, anagen; DC, dendritic cell; DP, dermal papilla; DS, dermal sheath; EC, endothelial cell; EPI, permanent epidermis keratinocyte; FIB, fibroblast-like cell; HG, hair germ; IFE B, interfollicular epidermis basal; IFE C, interfollicular epidermis basal cycling; IFE SB, interfollicular epidermis suprabasal; IMM, immune cell; LC, Langerhans cell; LV, lymph vessel cell; MC, macrophage; MEL, melanocyte; NC, neural crest; OB, outer bulge; SC, Schwann cell; SG, sebaceous gland; TC, T cell; uHF B, upper hair follicle basal; uHF SB, upper hair follicle suprabasal; VASC, vascular cell; vSM, vascular smooth muscle.

SUPPLEMENTARY REFERENCE

Joost S, Annusver K, Jacob T, Sun X, Dalessandri T, Sivan U, et al. The molecular anatomy of mouse skin during hair growth and rest. *Cell Stem Cell* 2020;26:441–57.e7.





Supplementary Figure S2. The skin develops normally in *Peli1*^{-/-} mice.
 (a) The skin was collected from uninfected adult wild-type and Pellino1-KO mice and examined with H&E staining. Bars = 50 mm. (b) Newborn pups (<12 hours) from *Peli1*^{+/-} (heterozygous) breeding pairs were genotyped and stained with toluidine blue. KO, knockout