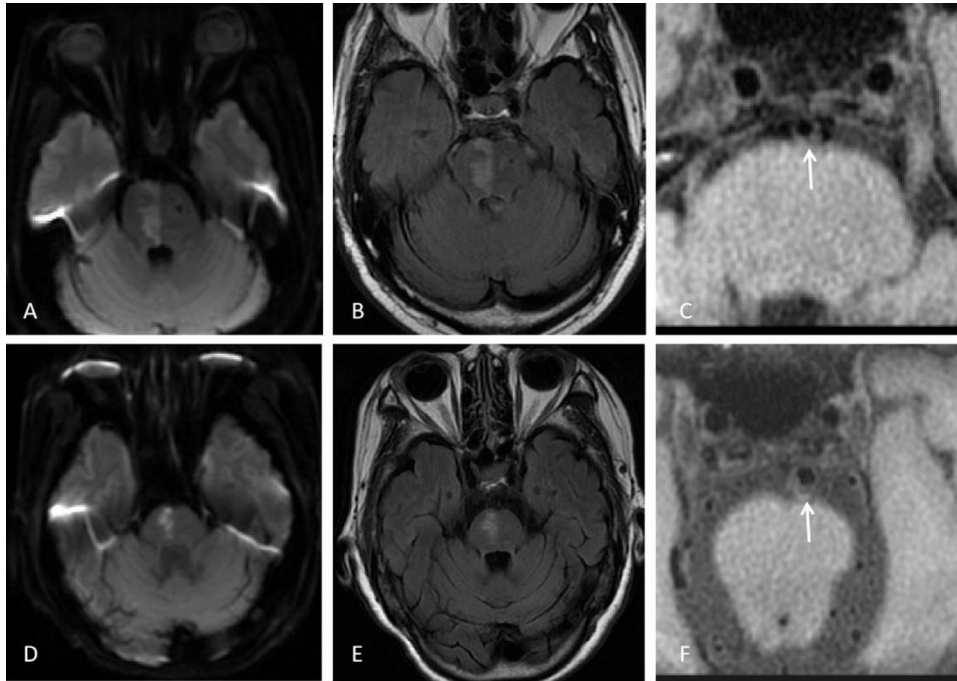


**Basilar artery plaque distribution is associated with pontine infarction and vertebrobasilar artery geometry**

**Supplementary figure 1:**



Patient one (A-C) , man, 67y, a paramedian pontine infarction was show on DWI (A) and T2WI-FLAIR (B), a posterior wall BA plaque was seen on the corresponding plane (C). Patient two (D-F), female, 75y, a paramedian pontine infarction was show on DWI (D) and T2WI-FLAIR (E), a posterior wall BA plaque was seen on the corresponding plane (F).