

FIGURE 1, 2 and 6

- 20x IMAGES
- QUANTIFICATION (see Methods, section 2.6): color image was transformed in an 8-bit gray copy. Using ImageJ, a rectangle was drawn around the whole retina section from GCL to RPE and a copy was originated. Then duplicates were processed as per lesion size

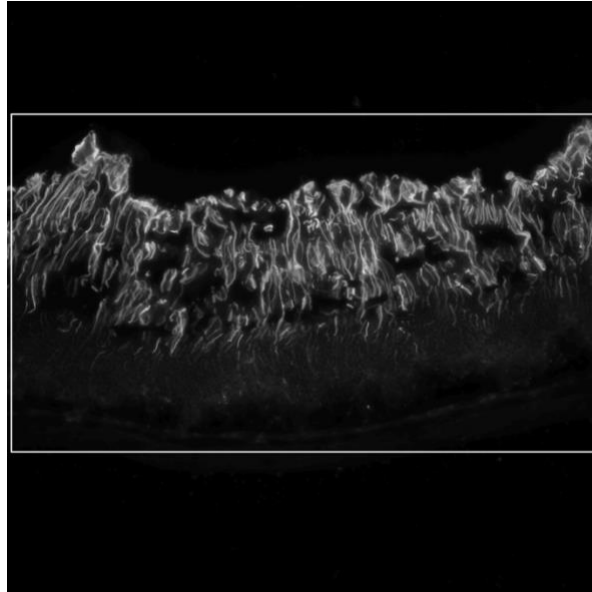


FIGURE 8

- 20X images
- QUANTIFICATION (see Methods, section 2.6): color image was transformed in an 8-bit gray copy. Using ImageJ, a rectangle was drawn around the fibronectin⁺ stained region at the injury site, and a copy was originated. Then duplicates were processed to measure the area of staining as seen outline of stained areas in the embedded white box.

