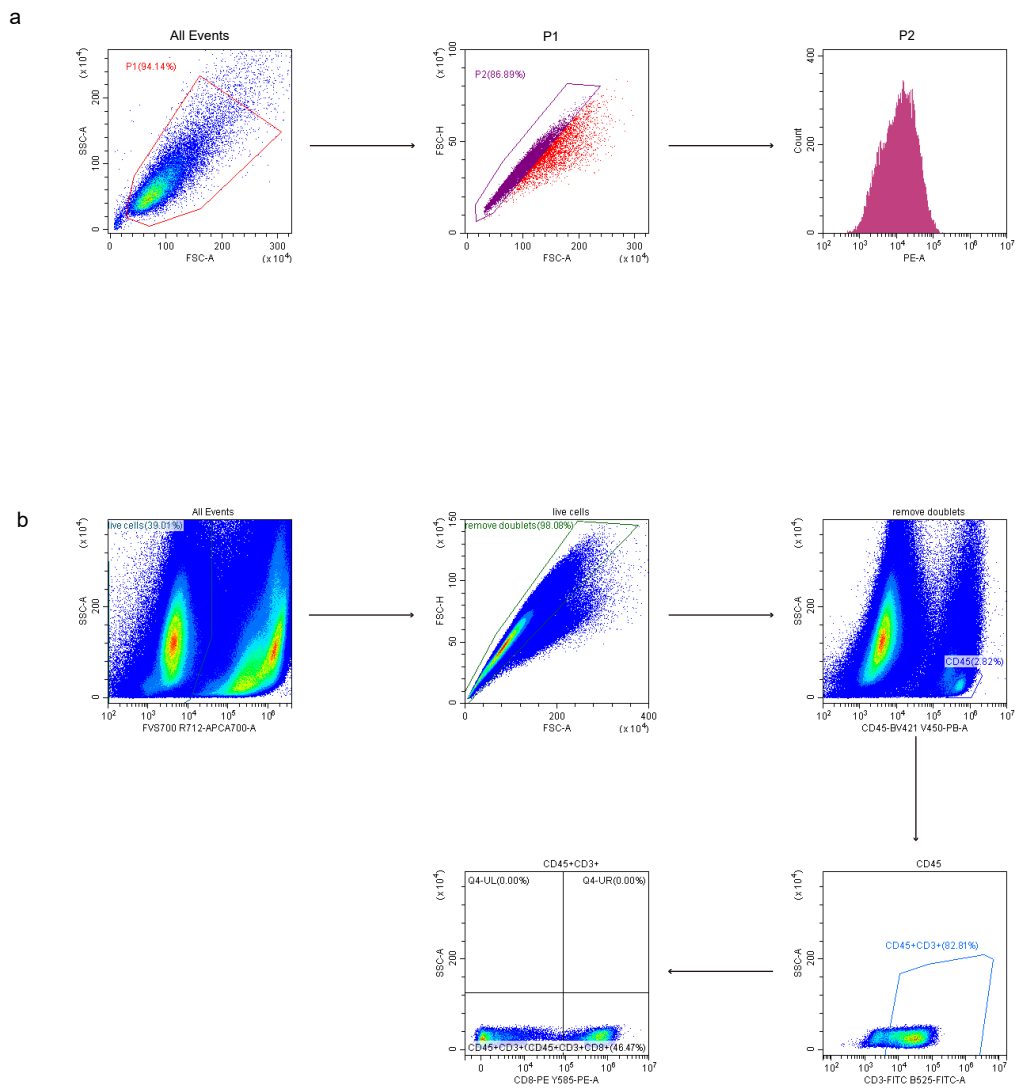




Disrupting the phase separation of KAT8–IRF1 diminishes PD-L1 expression and promotes antitumor immunity

In the format provided by the authors and unedited

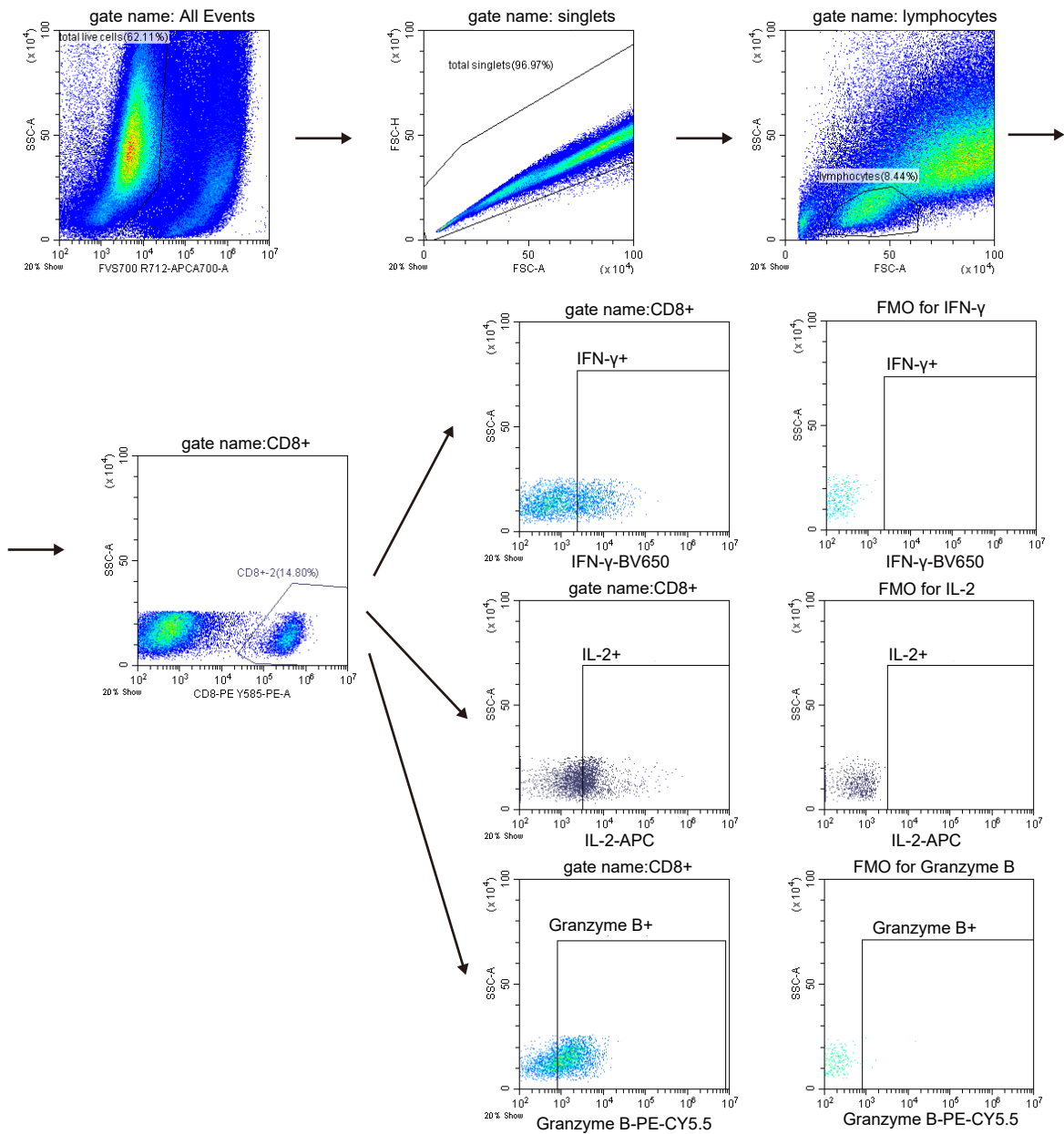


Supplementary Fig. 1 Gating strategies for flow cytometry analysis.

a. Gating strategy for cell surface PD-L1 expression analysis of human cancer cell lines, related to **Extended Data Fig. 1**.

b. Gating strategy for analysis of CD3+CD8+ T cells in tumor-infiltrating lymphocytes, related to **Fig. 1, Fig. 8 and Extended Data Fig. 10**.

a



Supplementary Fig. 2 Gating strategies for flow cytometry analysis.

a. Gating strategy for analysis of CD8+IFN- γ +, CD8+IL2+, CD8+GranzymeB+T cells in tumor-infiltrating lymphocytes, related to **Fig. 8** and **Extended Data Fig. 10**