

Supporting Information

Whole-body analysis of TRPML3 expression using a GFP-reporter mouse model reveals widespread expression in secretory cells and endocrine glands

Barbara Spix^{1¶}, Andrew J. Castiglioni^{2¶}, Natalie N. Remis^{2,3¶}, Emma N. Flores^{2,4}, Philipp Wartenberg⁵, Amanda Wyatt⁵, Ulrich Boehm⁵, Thomas Gudermann¹, Martin Biel⁶, Jaime García-Añoveros^{2,3,4,7*}, Christian Grimm^{1*}

Supplementary Figures

Figure S1. In situ on P2 *Trpml3*^{+/+} kidney with 3' *Trpml3* probe.

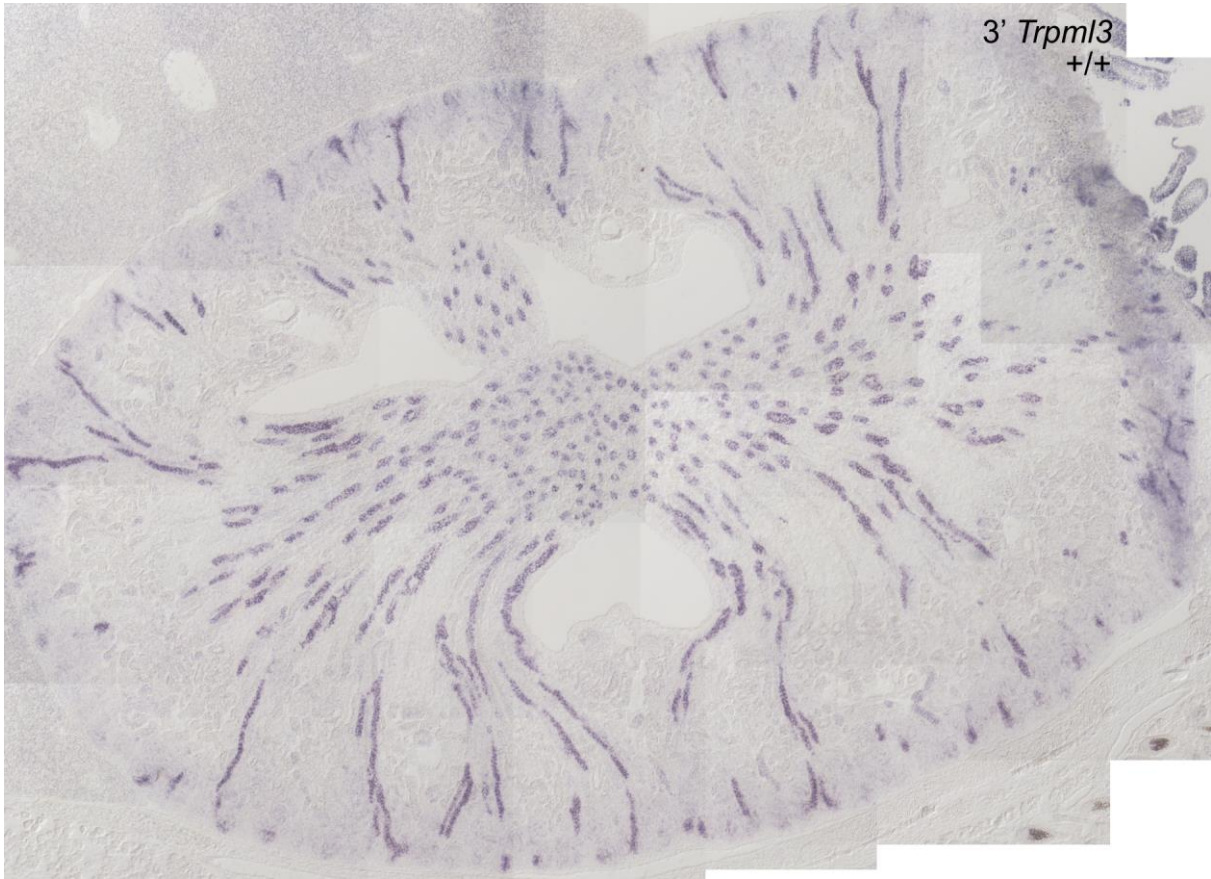


Figure S1. In situ on P2 *Trpm13*^{+/+} kidney with 3' *Trpm13* probe.